



U.S. Department of the Interior
Bureau of Land Management

WH&B Research Update

The Bureau of Land Management

September 2016



Why Does BLM Support WH&B Research?

- **BLM needs tools for on-range management**
 - 67 thousand adults on-range, in March 2016
 - Contraception, spay & neuter methods
 - Public safety & roads
- **Improved understanding of WH&B ecology**
 - Demography
 - Movements
 - Genetics
 - Behavior
- **Improved population monitoring methods**



2014 RFA University-led Contraception / Spay Projects

- ❑ Oregon State U., Spay research (1,2,3):
 - Pending litigation
- ❑ U. Kentucky, tubo-ovarian ligation (4):
 - Assessing preliminary results
- ❑ Colorado State U., GonaCon boosting (5):
 - ✓ 4-year boosted mares had low foaling rates
 - 2-year and 6-month boosted mares could show effects in 2017



2014 RFA University-led Contraception / Spay Projects

❑ Colorado State U., New vaccine (6):

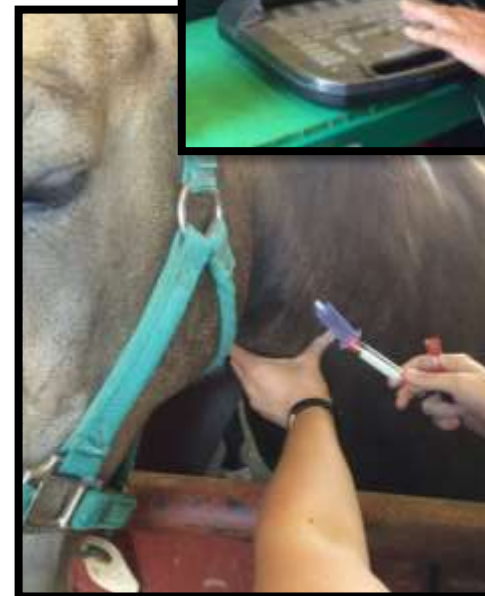
- Testing proteins that may cause oocyte depletion

❑ Ohio State U., New PZP delivery (7):

- Testing silicone oil with PZP, and capsule materials
- Testing in rabbits to begin soon

❑ Louisiana State U., New proteins to suppress GnRH production (8):

- Proteins are being tested *in vitro*
- August flood impacts possible



USGS-led Projects

- ✓ Radio Collar trials (9):
 - ✓ Preparing publication, presenting talk at Wildlife Society conference in October
- ☐ Wild horse spay study (10):
 - EA for Wyoming in preparation
- ☐ Wild horse gelding study (11):
 - Radio collaring in Conger HMA August 22-26
- ☐ Wild horse demography study (12, 13):
 - Radio collaring Frisco HMA horses this winter
 - EA for Wyoming in preparation





USGS-led Projects, cont.

❑ Burro demography study (14):

- ✓ 30 radio collars deployed on jennies at Sinbad HMA in April; No observed impacts
- ✓ Weekly field observations through September
 - Monthly checks in winter
 - Post mortem on pneumonia deaths, May-July

❑ Burro aerial survey techniques (15):

- ✓ 2 infrared surveys and 2 double observer surveys
 - Data analyses in winter 2016-17

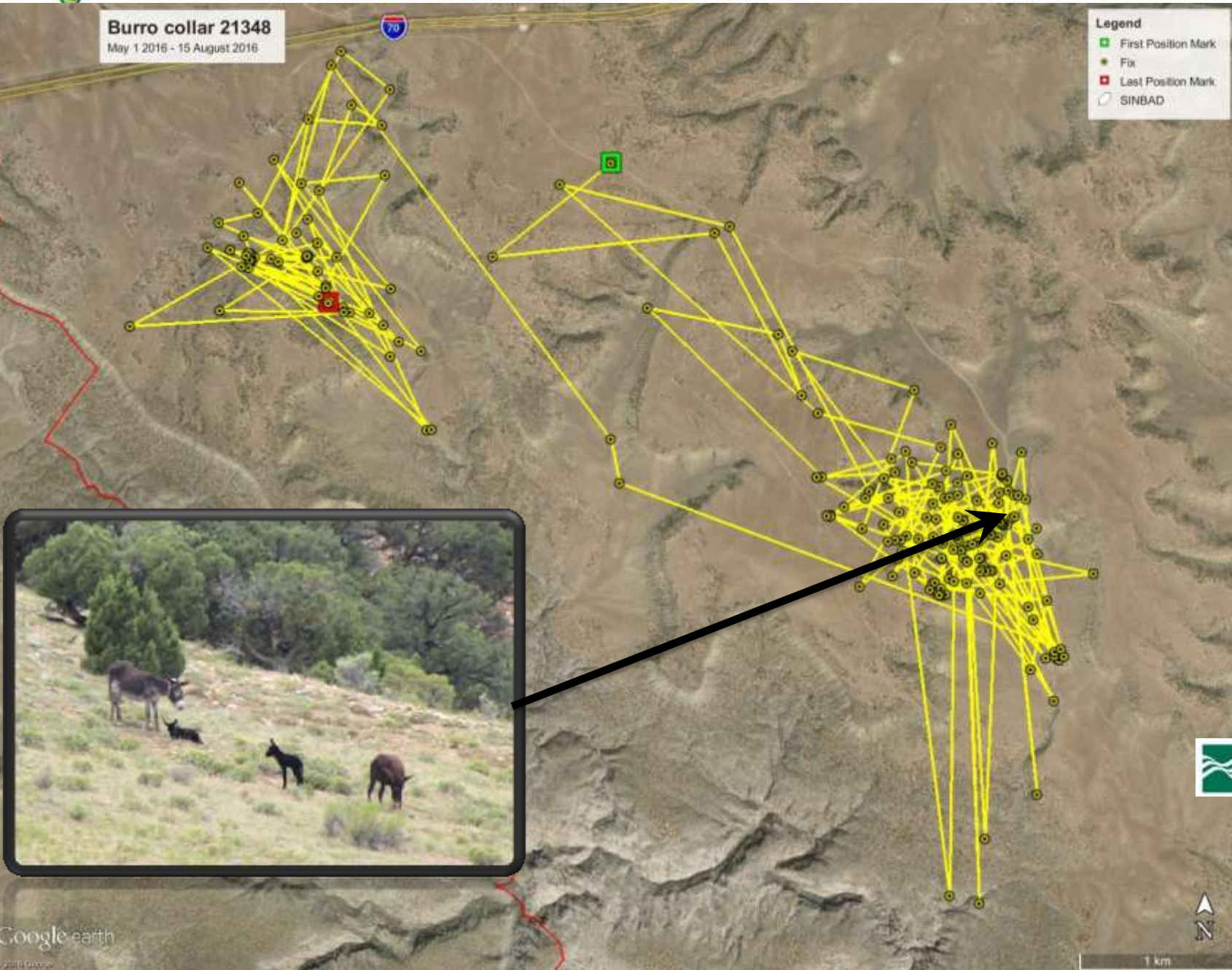




Burro collar 21348
May 1 2016 - 15 August 2016

Legend

- First Position Mark
- Fix
- Last Position Mark
- SINBAD



USGS-led Projects, cont.

✓ Fecal DNA study (16):

- Preparing publication, presenting DNA aging results at Wildlife Society conference in October
- Awaiting microhistology results for diet analyses

□ Carrying capacity model (17):

- Statistical model developed and tested at CSU
- Final report in prep this fall/winter

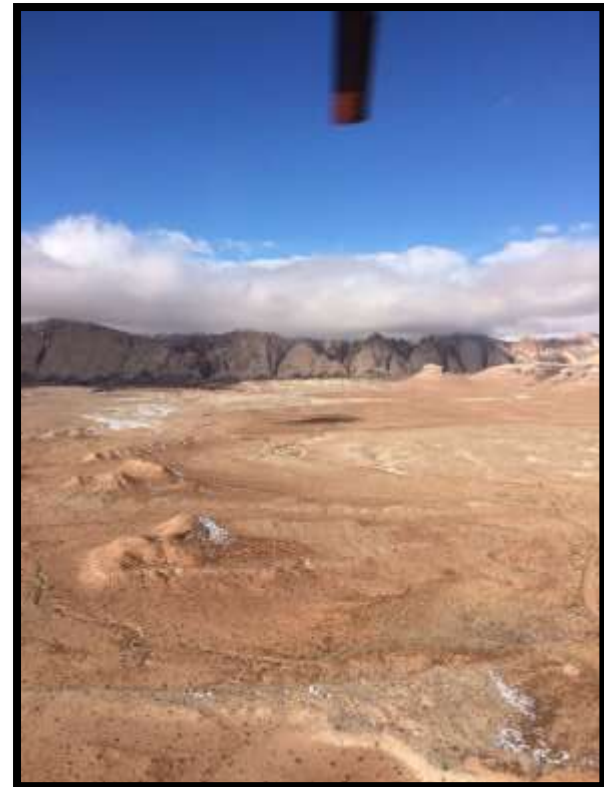
□ WinEquus II population modeling software (18):

- Development starting in October



WH&B Inventories Update: Aerial Surveys

- ✓ Surveys with new methods allow for statistical estimation of animals not seen
- ✓ 53 HMAs surveyed in 2016, as of August 18
 - 13 more before September 30





Questions & Comments from the Advisory Board