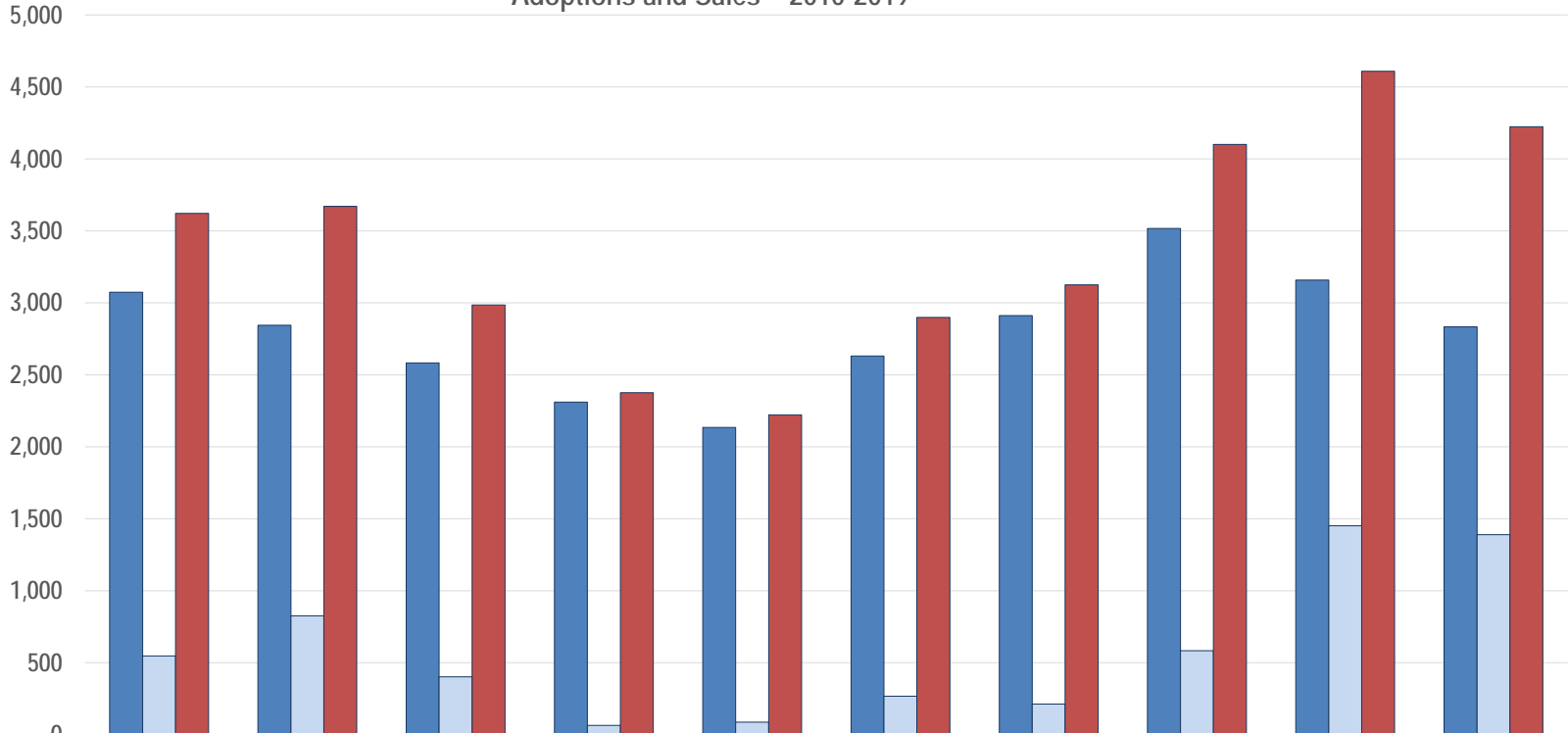


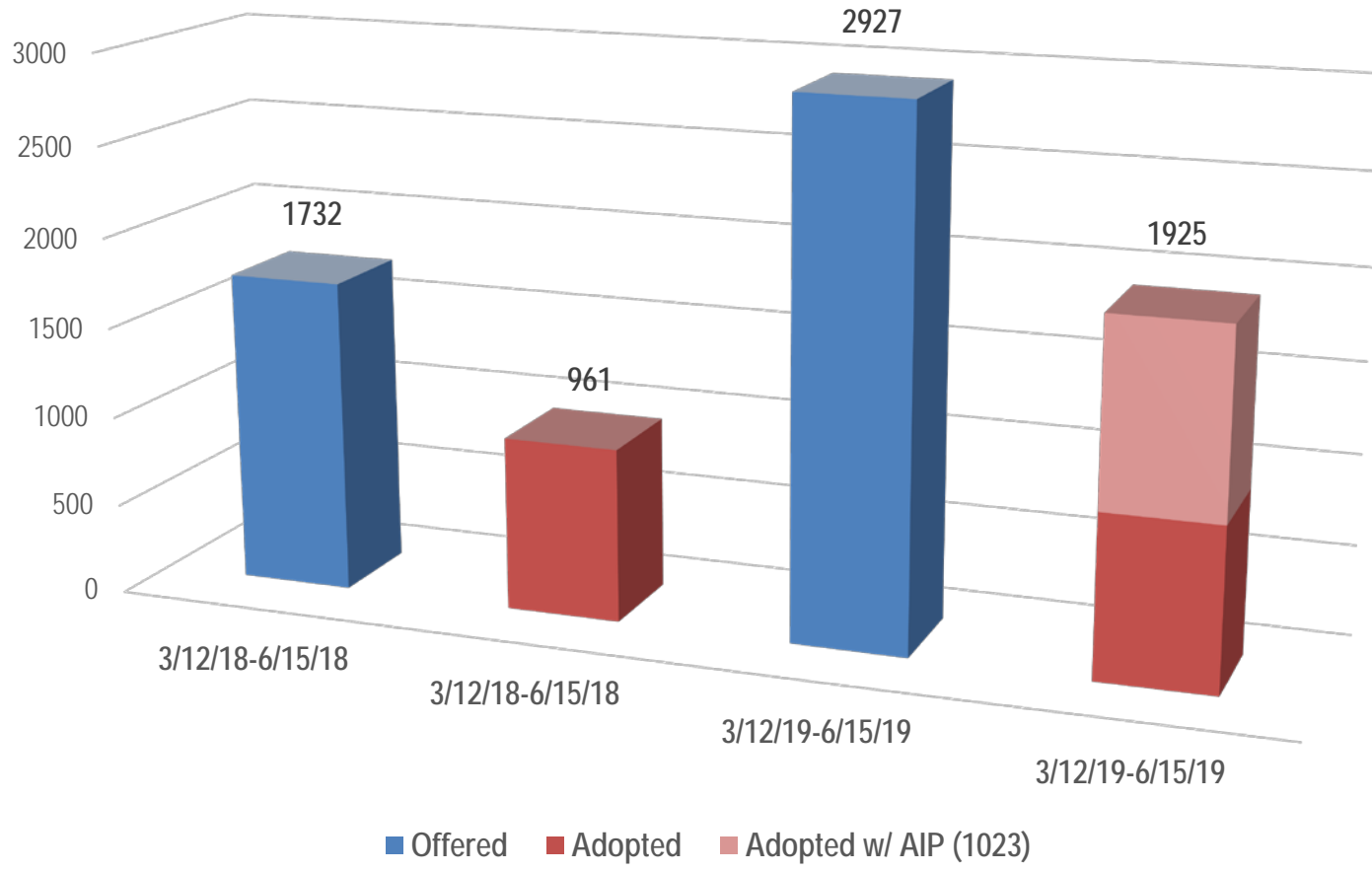
Adoptions and Sales ~ 2010-2019



| | 2010 | 2011 | 2012 | 2013 | 2014 | 2015 | 2016 | 2017 | 2018 | 2019 |
|-------------------|-------|-------|-------|-------|-------|-------|-------|-------|-------|-------|
| Adoptions | 3,074 | 2,844 | 2,583 | 2,311 | 2,135 | 2,631 | 2,912 | 3,517 | 3,158 | 2,834 |
| Sales | 547 | 826 | 402 | 65 | 87 | 268 | 213 | 584 | 1,451 | 1,389 |
| Adoptions & Sales | 3,621 | 3,670 | 2,985 | 2,376 | 2,222 | 2,899 | 3,125 | 4,101 | 4,609 | 4,223 |

All years Fiscal (Oct. 1 - Sept. 30)
 FY19 figures current as of June 21, 2019

Adoption Comparison Pre- and Post-AIP





U.S. Department of the Interior
Bureau of Land Management

News Release

Washington, D.C.

FOR IMMEDIATE RELEASE

Date: March 12, 2019

Contact: Debbie Collins, dacollin@blm.gov, (405) 579-1861

Bureau of Land Management offers new incentives to encourage more adoptions of wild horses and burros

WASHINGTON— As part of the Bureau of Land Management’s (BLM) effort to find good homes for wild horses and burros removed from public lands, the agency today began offering new financial incentives to encourage qualified people to adopt one or more of the animals. The program is part of the BLM’s efforts to confront a growing over-population of wild horses and burros on fragile rangelands and in off-range holding facilities, which cost taxpayers nearly \$50 million every year to maintain.

As of March 1, 2018, the wild horse and burro population on public lands was estimated at approximately 81,950 animals, which is now more than triple the size the land can support along with other legally mandated uses. High costs and a growing number of unadopted and unsold animals in BLM holding facilities have hindered the agency’s ability to reduce over-population in recent years. Chronic overpopulation increases the risk of damage to rangeland resources through overgrazing, and raises the chances of starvation and thirst for animals in overpopulated herds.

Through the new incentive program, qualified adopters are eligible to receive \$500 within 60 days of the adoption date and an additional \$500 within 60 days of titling for each animal, which normally occurs one year from the adoption date. The incentive is available for all untrained animals that are eligible for adoption, including animals at BLM facilities, off-site events or on the agency’s Online Corral website. Adopters will just pay a minimum \$25 adoption fee per animal.

“We understand that adopting a wild horse or burro represents a commitment. The incentive is designed to help with the adopter’s initial training and humane care,” said BLM Deputy Director of Programs and Policy Brian Steed. “I encourage anyone who has considered adopting a wild horse or burro to join the thousands of owners who have provided good homes to more than 245,000 wild horses or burros since 1971.”

Potential adopters are required to complete an application proving they can feed and provide humane care to the animals and that they will adhere to the prohibited acts and titling requirements. In addition, potential adopters must authorize the incentive to be deposited via electronic funds transfers to their preferred account at their financial institution. Potential adopters should visit [the BLM website](#) or call (866) 468-7826 to learn more about the guidelines and requirements for adopting a wild horse or burro.

The BLM manages and protects wild horses and burros under the authority of the 1971 Wild Free-Roaming Horses and Burros Act. The Act directs the BLM to address overpopulation by removing excess animals from over-populated herds and offering them to the public for adoption or purchase.

“Finding good homes for excess animals and reducing overpopulation on the range are top priorities for the BLM as we strive to protect the health of these animals while balancing other legal uses of our public

rangelands, including allowing for other traditional land uses such as wildlife conservation and grazing,” Steed added.

Owning a wild horse or burro is an extraordinary experience. They have reached national notoriety through disciplines such as dressage, endurance and therapeutic programs that help veterans fulfill a new mission. Wild horses and burros are routinely preferred by public officials for important tasks such as patrolling the border and local policing. Read stories from recent wild horse and burro adopters and purchasers on the [BLM's Flickr page](#).

-BLM-

The BLM manages more than 245 million acres of public land located primarily in 12 Western states, including Alaska. The BLM also administers 700 million acres of sub-surface mineral estate throughout the nation. The agency's mission is to sustain the health, diversity, and productivity of America's public lands for the use and enjoyment of present and future generations. Diverse activities authorized on these lands generated \$96 billion in sales of goods and services throughout the American economy in fiscal year 2017. These activities supported more than 468,000 jobs.



Off-Range Highlights

(as of June 25, 2019)

Off-Range Pasture Solicitation – In an effort to acquire additional pasture space, a solicitation for additional contracted Off-Range Pasture (ORP) space was posted on March 4 and closed May 3 yielding approximately 30 proposals. BLM staff will review proposals to determine the competitive range and coordinate with the Technical Evaluation Panel to conduct further analysis. This solicitation targeted ORPs in the states of CO, ID, KS, MT, NE, NV, ND, OK, OR, SD, TX panhandle, UT, WA and WY capable of holding up to 5,000 wild horses.

Off-Range Corral Solicitation – The Wild Horse and Burro Program announced a solicitation on June 17 for additional contracted Off-Range Corral (ORC) space in the states of Colorado, Utah, and Wyoming. The Program is seeking space for 500 - 3,500 animals in close proximity to Herd Management Areas. The corrals will serve as initial preparation facilities for excess animals removed from the range. The Program currently has contracts for 26 ORCs with a combined capacity of 18,970 head. The solicitation closes August 8.

Public Off-Range Pastures – The BLM has four Public Off-Range Pasture (PORPS) contracts that provide a free-roaming environment for wild horses removed from Western public lands while allowing for regular public visitation. The PORPS are a more cost-effective and efficient approach to managing costs for animals in holding and continuing to provide the public with opportunities to view wild horses in a natural setting. The four PORPS are located in Kansas (1), Oklahoma (1) and Wyoming (2). Three of the PORPs held events in June 2019 that featured animals available for adoption/sale as well as training demonstrations and tours were provided. Approximately 67 animals were placed during those events.

Environmental Education – The Wild Horse and Burro Program is working with BLM's Division of Education, Interpretation and Partnership to develop a youth activity booklet focused on wild horse and burro management as part of the agency's Junior Ranger series of environmental education products. The booklet will offer students an engaging overview of the history of wild horses and burros in America, their needs, impact on the environment and the necessity and challenges of properly managing them. The Program is also supporting the deployment of a video-based educational discussion guide about wild horse and burro management for use with young and older learners alike.

FY 2019 Placement Update – As of June 21, the program has placed over 4,220 animals, which is on track to exceed the total placement figure for all of FY18 (4,541).

Adoption Incentive Program – The BLM launched the Adoption Incentive Program (AIP) on March 12, which provides up to \$1,000 to adopt an untrained wild horse or burro. More information can be found at www.blm.gov/adoption-incentive. The first animals to be adopted under the program were two burros, adopted from Palomino Valley Corrals in Reno. As of June 21, more than 1,000 animals have been adopted through AIP from corrals and events throughout the United States.

On-line Corral – The Program continues to expand its use of the Online Corral platform to present more animals for placement and to reach a broader market. Recent events have featured upwards of 90 animals from various facilities, with placement rates exceeding 60 percent. The Program is employing innovative tools for



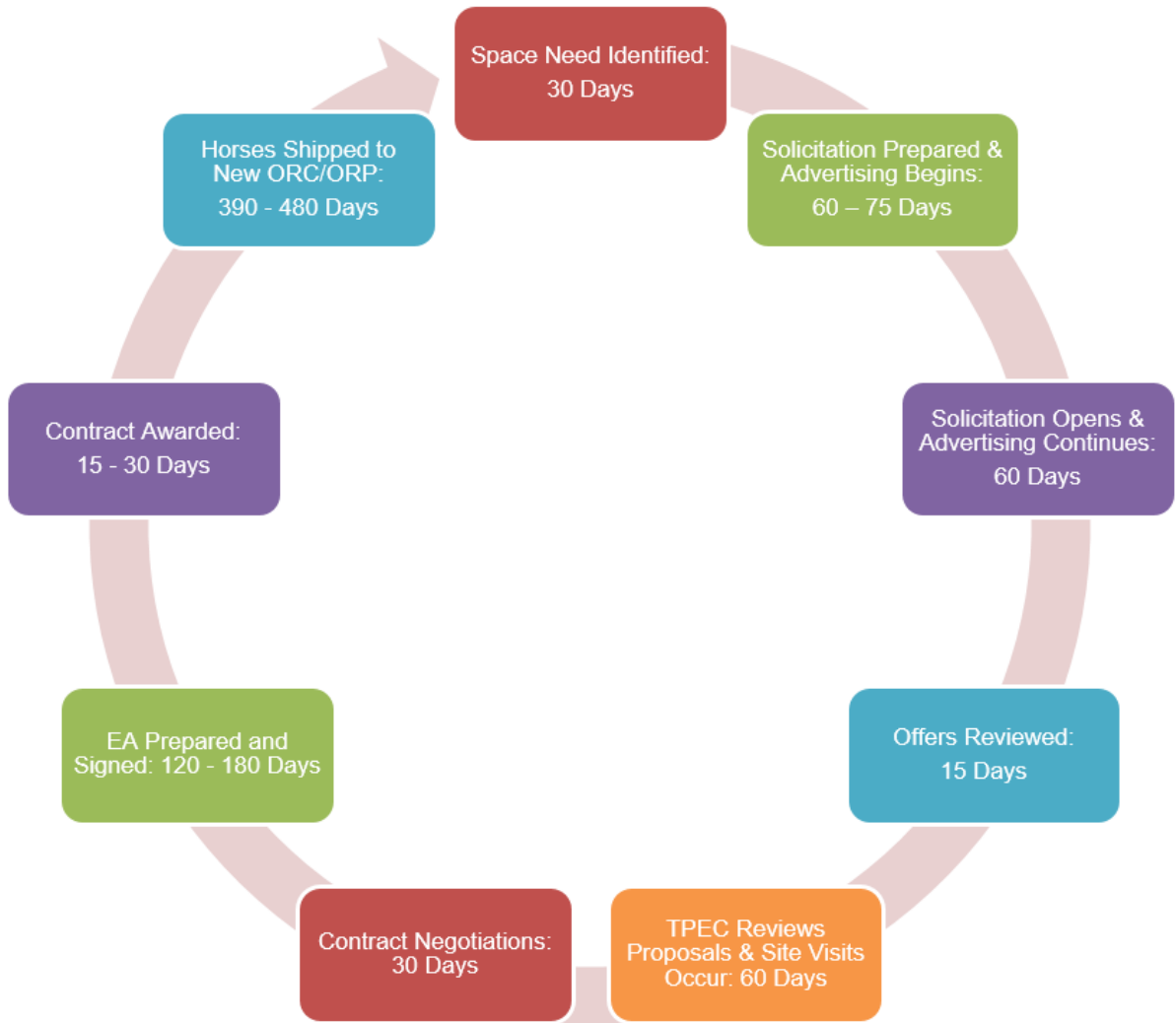
capturing and presenting placement data to improve future performance. Initial discussions are also underway to potentially transform the Online Corral platform into a single portal for processing adopter applications in support of our network of Public Off-Range Pastures.

Mustang Heritage Foundation - The Mustang Heritage Foundation (MHF) partnership continues to reflect the potential for additional growth in assisting the BLM with the placement of trained wild horses and burros into private care. Their continued growth in the east and expansion of the storefront program continues to provide the BLM with additional locations for the public and other TIP trainers to access animals that would normally be difficult to access without driving significant distances. They have assisted the BLM in placing over 1,560 animals in FY 2019.

MHF also continues to assist the BLM with public outreach and education through the new *America's Mustang Virtual Reality Experience (AMVRE)* trailer. The goal is to reach a diverse population that includes both general audiences and audiences involved in the western culture. The AMVRE trailer has multiple videos and virtual reality experience, located inside and outside of the trailer, provided an opportunity for spectators to witness range degradation and scarce water sources on the overpopulated public lands, while learning about the program's multiple-use mission. In addition, the experience provides the public with an opportunity to learn about the adoption and sales programs.



Off-Range Corral and Pasture Acquisition Cycle





U.S. Department of the Interior
Bureau of Land Management

News Release

Washington, D.C.

FOR IMMEDIATE RELEASE

Date: June 17, 2019

Contact: Paul McGuire; pmcguire@blm.gov; (405) 579-7190

BLM seeks bids for off-range corrals for wild horses and burros

Facilities must be located within Colorado, Utah or Wyoming

WASHINGTON— The Bureau of Land Management (BLM) announced today that it is seeking contractors to provide corral space for wild horses and burros gathered from public rangelands in the West. The BLM will award contracts to facilities in the states of Colorado, Utah and Wyoming that can accommodate 500—3,500 wild horses and burros in safe, humane conditions. Corrals will serve as short-term holding and preparation facilities for animals to be transferred to off-range pastures or adoption and sale locations further east.

The BLM removes animals from the range to control the size of herds, which double in population every four years because wild horses and burros have virtually no predators that can naturally control population growth. These rapidly-growing populations and the stress they place on the landscape requires BLM to remove more animals from the range than the agency can immediately place into private care. Off-range care facilities provide needed capacity to hold these excess animals, while providing veterinary care and preparing them for adoption. They provide key support for BLM's mission of maintaining healthy wild horse and burro herds on healthy rangelands.

Depending on their condition, animals can only be humanely transported a certain distance in a single day (typically no more than 10 hours). Consequently, it is necessary to have a network of off-range corrals strategically located to allow for safe and humane shipment. For that reason, Facilities must be within 10 hours drive time of regional herd management areas. Specifically, facilities in Colorado must be west of I-25, north of I-76 and no more than 25 miles south of Hwy 50. Facilities in Utah must be east of I-15 and north of I-70. In Wyoming, facilities must be south of Hwy 20 and 26. Facilities outside the boundaries will not be considered.

Facilities must also be staffed by personnel with knowledge, skill and ability to safely handle wild horses and burros, and be capable of providing appropriate veterinary care.

Bids will be accepted through August 8, 2019.

Applicants who are new to conducting business with the government must first obtain a Dun and Bradstreet number at www.dnb.com and then register at www.sam.gov/ to respond to the solicitation. No fee is involved. The solicitation describes what to submit to the BLM and where to send it. To obtain the contract solicitation:

- (1) Go to www.fedconnect.net;
- (2) Click on "Search Public Opportunities";
- (3) Under Search Criteria, select "Reference Number";
- (4) Enter the solicitation's reference number: 140L0119R0004;
- (5) Click "Search" and once the solicitation information appears, download the information on the right.

For assistance, please contact Kemi Ismael at (202) 912-7098 or kismael@blm.gov. Ms. Ismael can assist with general questions. A list of frequently asked questions is available at: <https://go.usa.gov/xUYUb>.

As of March 1, 2019, the wild horse and burro population on public lands was estimated to be 88,090, which is more than triple the number of animals the land can sustainably support in balance with other wildlife and uses of the land. The BLM is legally required to maintain healthy wild horse and burro herds on healthy rangelands as part of its multiple-use mission. To learn more about the Wild Horse and Burro Program, visit www.blm.gov/whb.

–BLM–

The BLM manages more than 245 million acres of public land located primarily in 12 Western states, including Alaska. The BLM also administers 700 million acres of sub-surface mineral estate throughout the nation. Diverse activities authorized on these lands generated \$96 billion in sales of goods and services throughout the American economy in fiscal year 2017. These activities supported more than 468,000 jobs.



U.S. Department of the Interior
Bureau of Land Management

News Release

Washington, D.C.

FOR IMMEDIATE RELEASE

Date: March 04, 2019

Contact: Debbie Collins; dacollin@blm.gov; (405) 579-1861

BLM seeks bids for new off-range pastures for wild horses and burros

New pastures will provide free-roaming environment for animals in overpopulated herds

WASHINGTON— The Bureau of Land Management (BLM) announced today that it is seeking contractors for off-range pastures to provide a free-roaming environment and quality care for wild horses removed from Western public lands. The BLM will award multiple contracts that can accommodate 200 – 5,000 head of wild horses, with a four-year or nine-year renewal option. All contracts require supplemental feed for a minimum of four months to ensure that animals maintain a quality body condition throughout the dormant months.

Bids will be accepted from the following states through May 3, 2019: Colorado, Idaho, Kansas, Montana, Nebraska, Nevada, North Dakota, Oklahoma, Oregon, South Dakota, Texas “Panhandle” (only north of Hwy 82 and 84), Utah, Washington and Wyoming. The area west of the Cascade Mountain Range in Oregon and Washington is excluded.

Applicants who are new to conducting business with the government must first obtain a Duns and Bradstreet number at www.dnb.com and then register at www.sam.gov/ to respond to the solicitation. No fee is involved. The solicitation describes what to submit to the BLM and where to send it. To obtain the contract solicitation:

- (1) Go to www.fedconnect.net;
- (2) Click on “Search Public Opportunities”;
- (3) Under Search Criteria, select “Reference Number”;
- (4) Enter the solicitation’s reference number “140L0119R0002”;
- (5) Click Search” and once the solicitation’s information appears, download the information on the right.

For assistance, please contact Kemi Ismael at (202) 912-7098 or kismael@blm.gov. Ms. Ismael can assist with general questions. A list of frequently asked questions is available <https://on.doi.gov/2JSatfX>

As of March 1, 2018, the wild horse and burro population on public lands was estimated at 82,000 animals, which is more than triple the number of animals the land can support in conjunction with other legally mandated land uses. To learn more about the wild horse or burro program, visit <https://blm.gov/whb>

–BLM–

The BLM manages more than 245 million acres of public land located primarily in 12 Western states, including Alaska. The BLM also administers 700 million acres of sub-surface mineral estate throughout the nation. The agency’s mission is to sustain the health, diversity, and productivity of America’s public lands for the use and enjoyment of present and future generations. Diverse activities authorized on these lands generated \$96 billion in sales of goods and services throughout the American economy in fiscal year 2017. These activities supported more than 468,000 jobs.