

MODOC NATIONAL FOREST



Amanda McAdams
Forest Supervisor

WILD HORSE AND BURRO ADVISORY
BOARD MEETING

REDMOND, OREGON

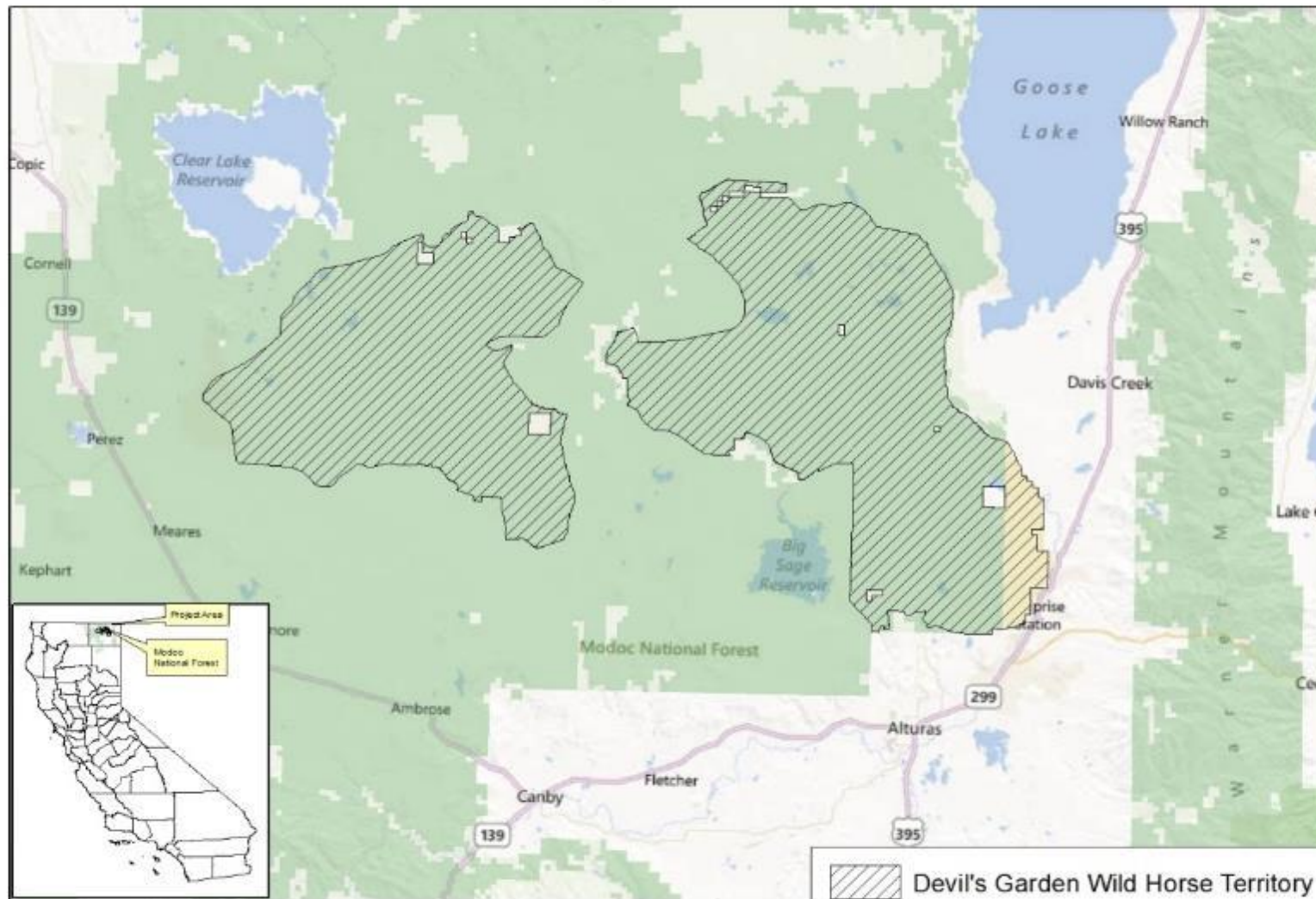
APRIL 13-14, 2016

BACKGROUND

- 1.6 Million acres of National Forest
- 1.0 Million acres of rangeland
- 232,520 Acres in the Devil's Garden Wild Horse Territory



Devil's Garden Wild Horse Territory Project Location



Map 1



1 in = 6 miles



-  Devil's Garden Wild Horse Territory
-  Modoc National Forest
-  Bureau of Land Management

Devil's Garden Wild Horse Territory

- Created by the Wild Free-Roaming Horses and Burros Act of 1971
- Sage/steppe ecosystem
- Forage, water and access is limited
- Relatively flat, rough and rocky lava plateau



Territory Management Plan

- Approved August 2013
- Sets AML at 206 to 402 Horses
- Available at: <http://1.usa.gov/1PxhnVA>

Authorizes:

- Gathering of excess horses
- Fertility treatment using PZP
- Actions to adjust herd sex ratio to 50/50

*Recent court decision upheld Territory boundaries and AML prescribed in the Devil's Garden Plateau Wild Horse Territory Management Plan

Current Situation

Census:

- Double-count census completed in late February
- Results estimate a population of 2,246 (does not include this year's foal crop)
- ~100 on private and Tribal lands at the time of the survey

Current Conditions:

- Degraded riparian areas
- Conversion to annual grasses and invasive species
- Degraded sage grouse habitat
- Increased juniper encroachment

North Fence Springs - Spring



82 42°F5°C



06-30-2015 05:45:59

North Fence Springs- Fall



7900 42°F 5°C



10-21-2015 09:19:39

Economic Impacts

Private and Tribal land

- Multiple requests to remove nuisance horses
- \$2 million conservation easement in jeopardy
- Potential safety issues near highways

Permitted Livestock Grazing

- 55% reduction in 2014 (drought and wild horse related)
- 50% reduction in 2015 (primarily wild horse related)
- 50% + reduction in 2016 (primarily wild horse related)

Yearly Authorized Livestock vs. Actual Wild Horse Use Compared to Available Forage Threshold



Planned For 2016

- Establishment of a Wild Horse Collaborative to make recommendations on placement of horses from gathers
- Private and Tribal land gather

Moving Forward

- Organize gathers to reduce wild horse populations to AML within WHT boundaries
- Additional private land and/or tribal gathers as requested
- Placement of excess horses

Conclusion

- A gather is planned for the fall of this year to remove horses on private and Tribal lands.
- The Modoc National Forest invites participation in a collaborative group focusing on identifying options for placement of excess horses into good homes.



Questions?

