



U.S. Department of the Interior
Bureau of Land Management

BLM Alaska Planning/Implications of Streamlining





<https://www.blm.gov/programs/planning-and-nepa/plans-in-development/alaska>

FEATURED PLANS AND NEPA IN DEVELOPMENT

Read about featured plans and NEPA documents currently being developed, revised or amended, and get involved in the planning process.

- [Ambler Road EIS](#)
- [Bering Sea-Western Interior RMP](#)
- [Central Yukon RMP](#)
- [Coastal Plain Oil and Gas Leasing EIS](#)
- [Greater Mooses Tooth 2 SEIS](#)
- [Haines Amendment](#)
- [Squirrel River EA](#)
- [SAExploration Inc. Seismic Application](#)
- [Willow Master Development Plan EIS](#)

BLM is a cooperating Agency of the following planning efforts:

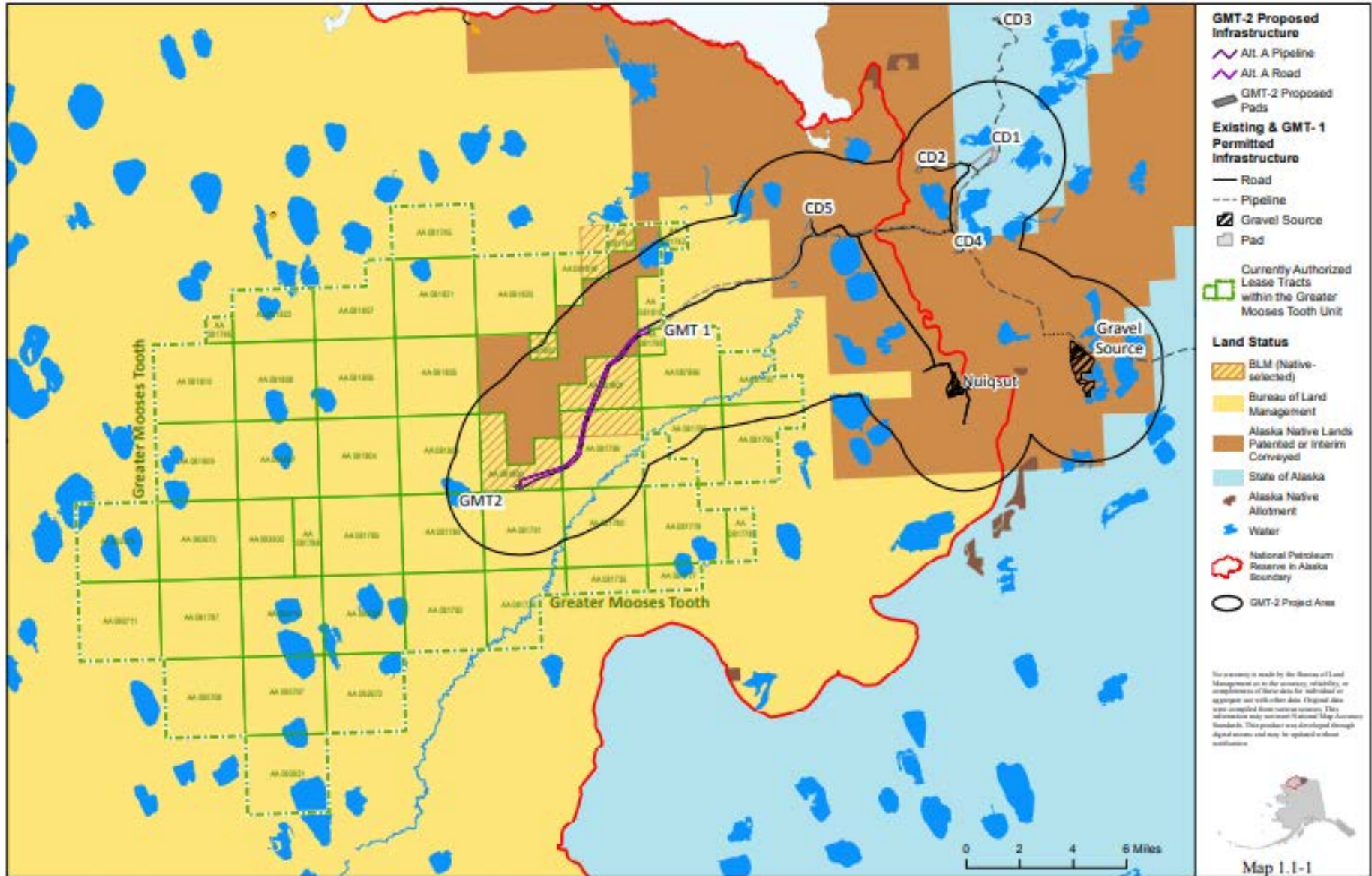
- [Alaska LNG EIS](#)
- [Alaska Standalone Pipeline Project SEIS](#)
- [Donlin Gold Project EIS](#)

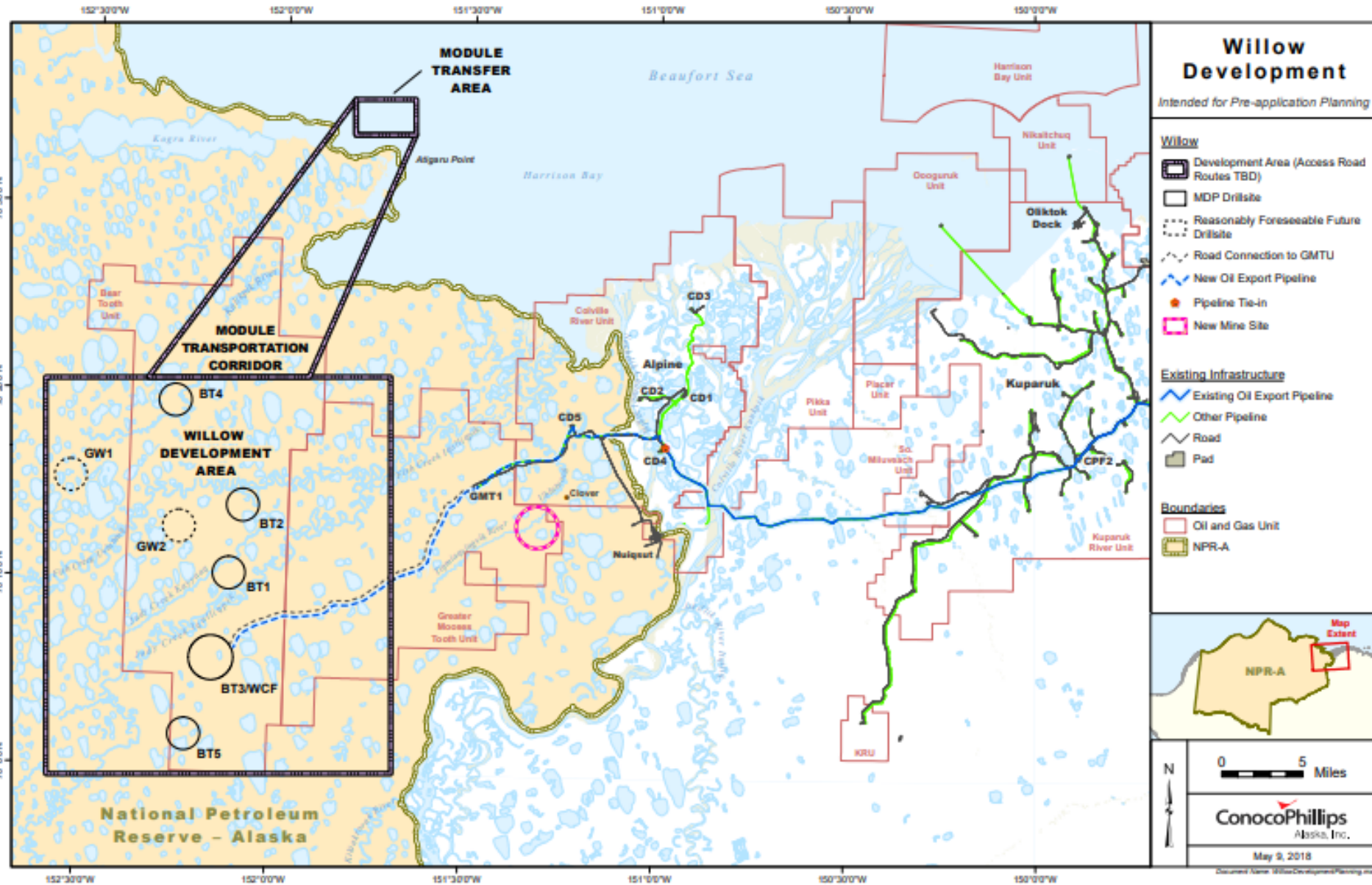
PLANS IN EFFECT



FREQUENTLY REQUESTED NEPA DOCUMENTS







Willow Development

Intended for Pre-application Planning

- Willow**
- Development Area (Access Road Routes TBD)
 - MDP Drillsite
 - Reasonably Foreseeable Future Drillsite
 - Road Connection to GMTU
 - New Oil Export Pipeline
 - Pipeline Tie-in
 - New Mine Site
- Existing Infrastructure**
- Existing Oil Export Pipeline
 - Other Pipeline
 - Road
 - Pad
- Boundaries**
- Oil and Gas Unit
 - NPR-A

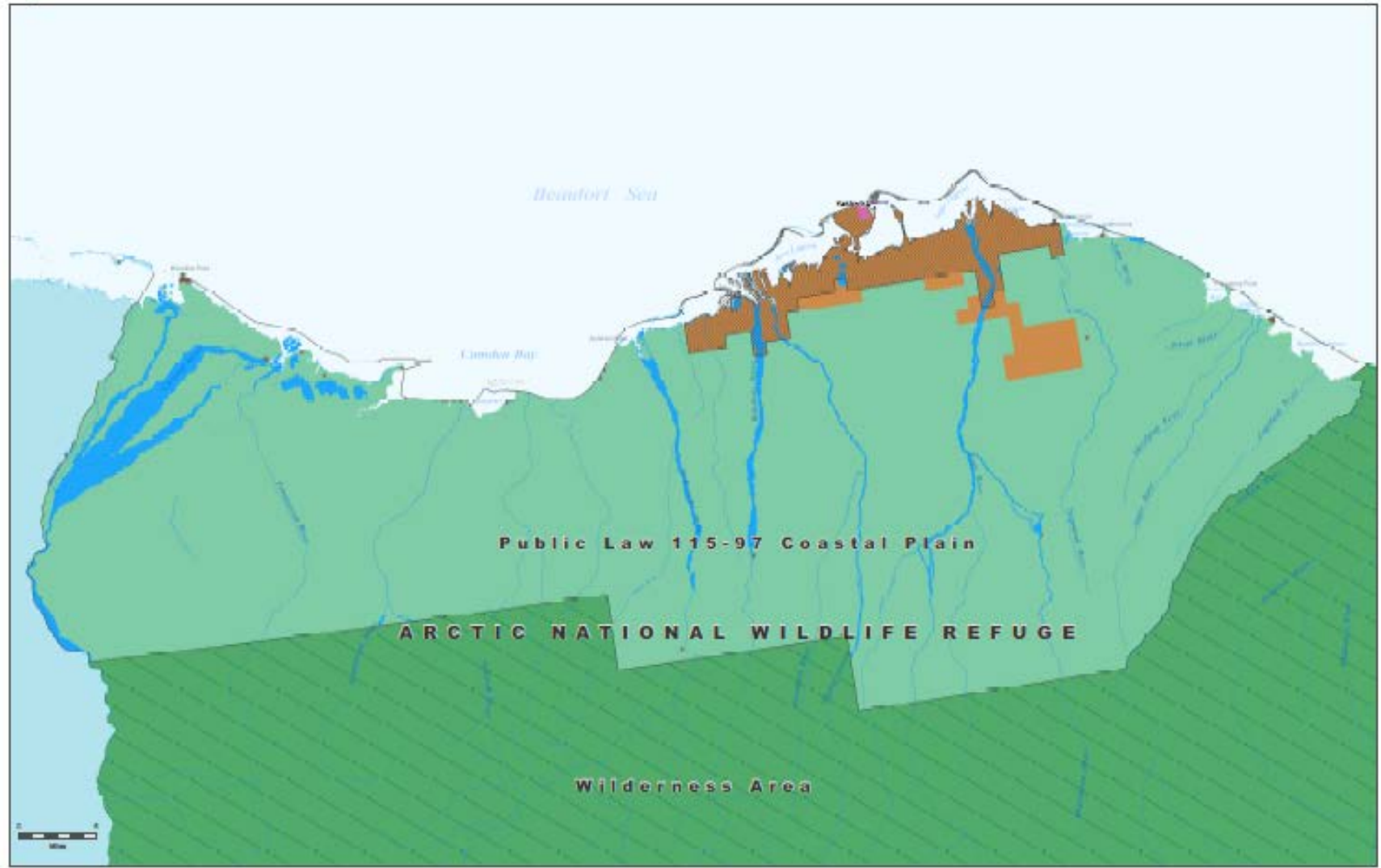


0 5 Miles

ConocoPhillips
Alaska, Inc.

May 9, 2018

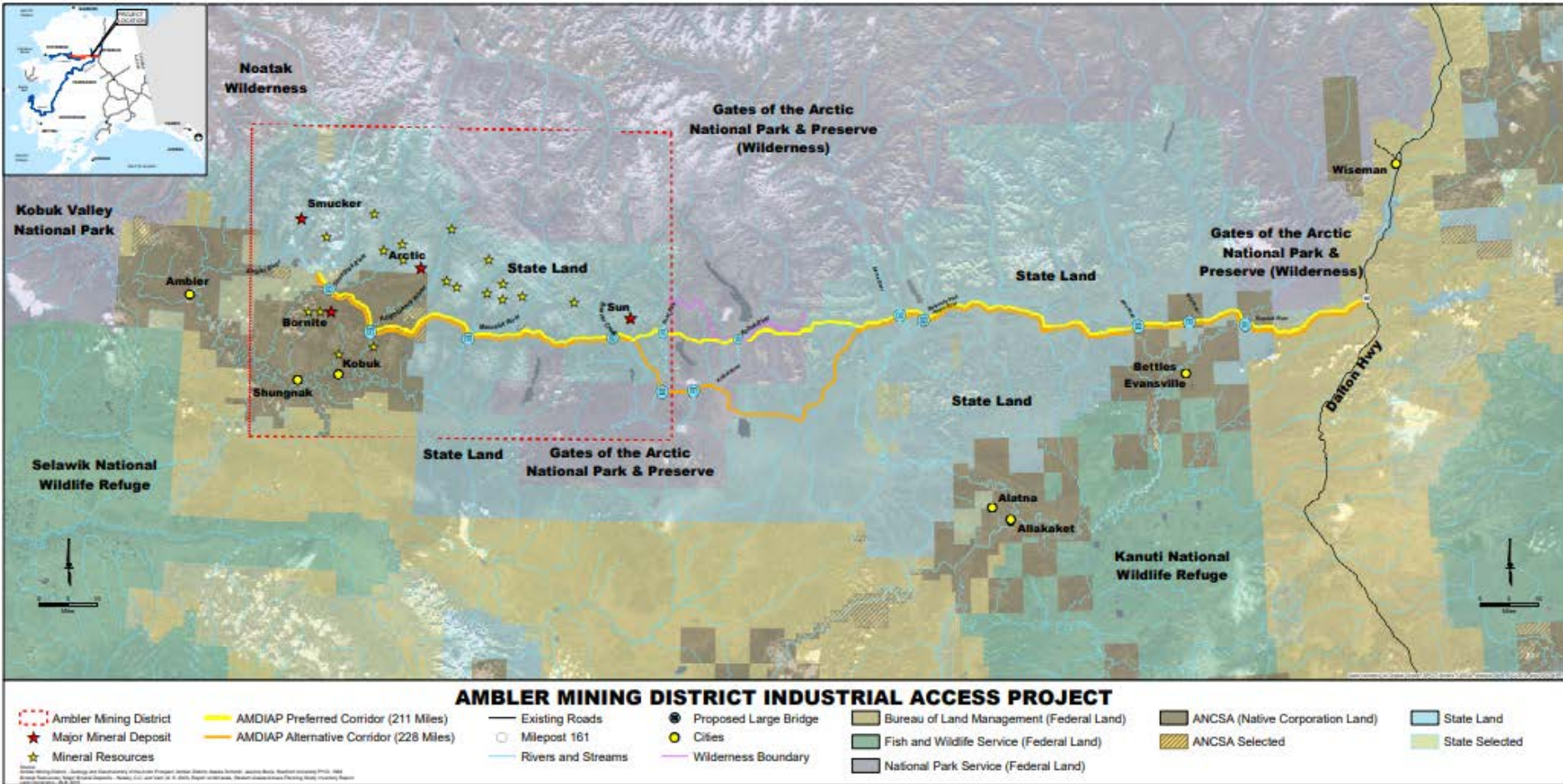
Document Name: WillowDevelopmentPlanning.mxd



- Public Law 115-97 Coastal Plain
- U.S. Fish and Wildlife Service
- U.S. Fish and Wildlife Service, wilderness area
- State
- Air Force
- Native allotment
- Native lands (patented or interim conveyed)

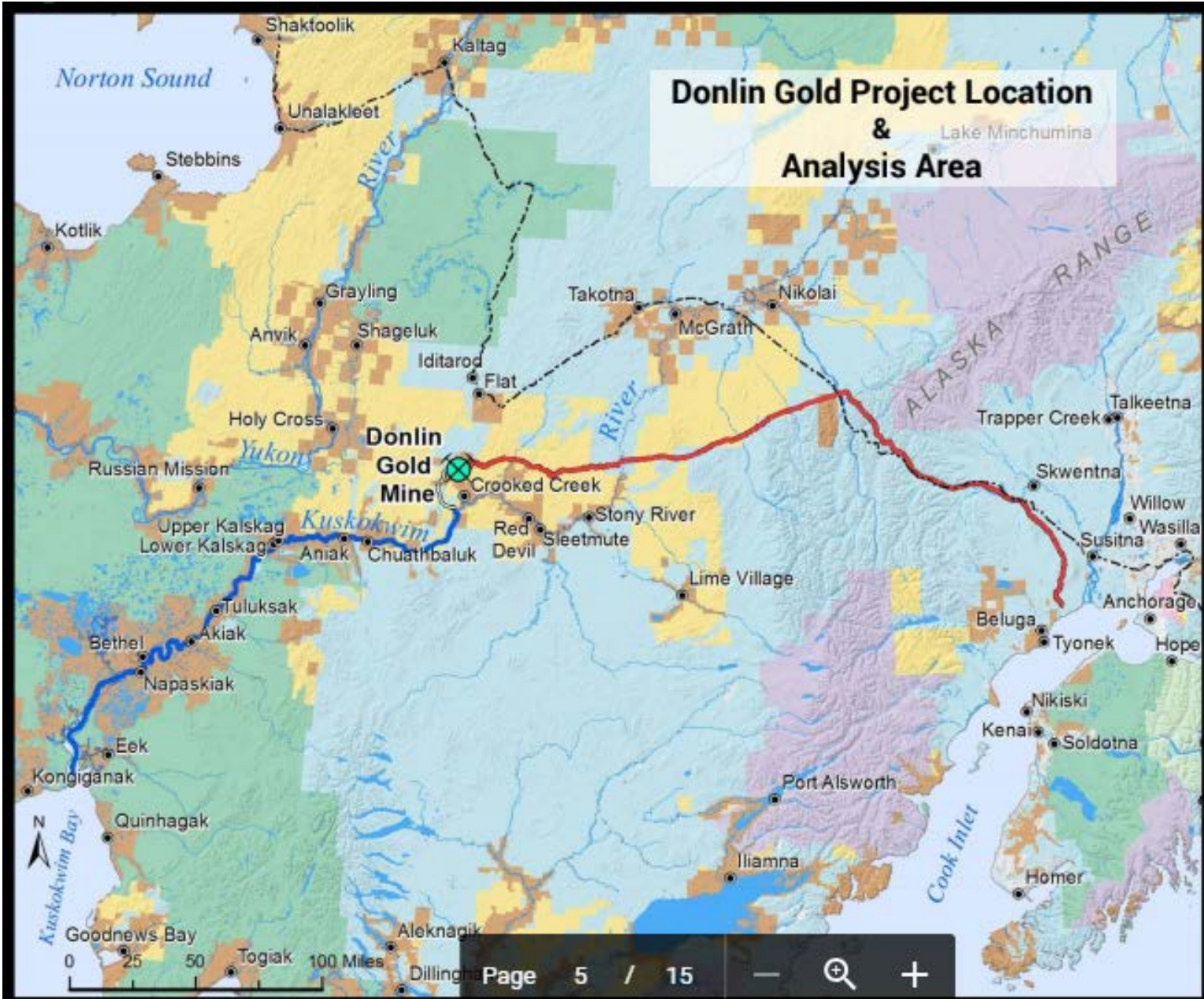
Map Date: 04/01/2014
 Map Scale: 1:500,000
 Data Source: BLM, USFWS, State of Alaska, Air Force, etc.







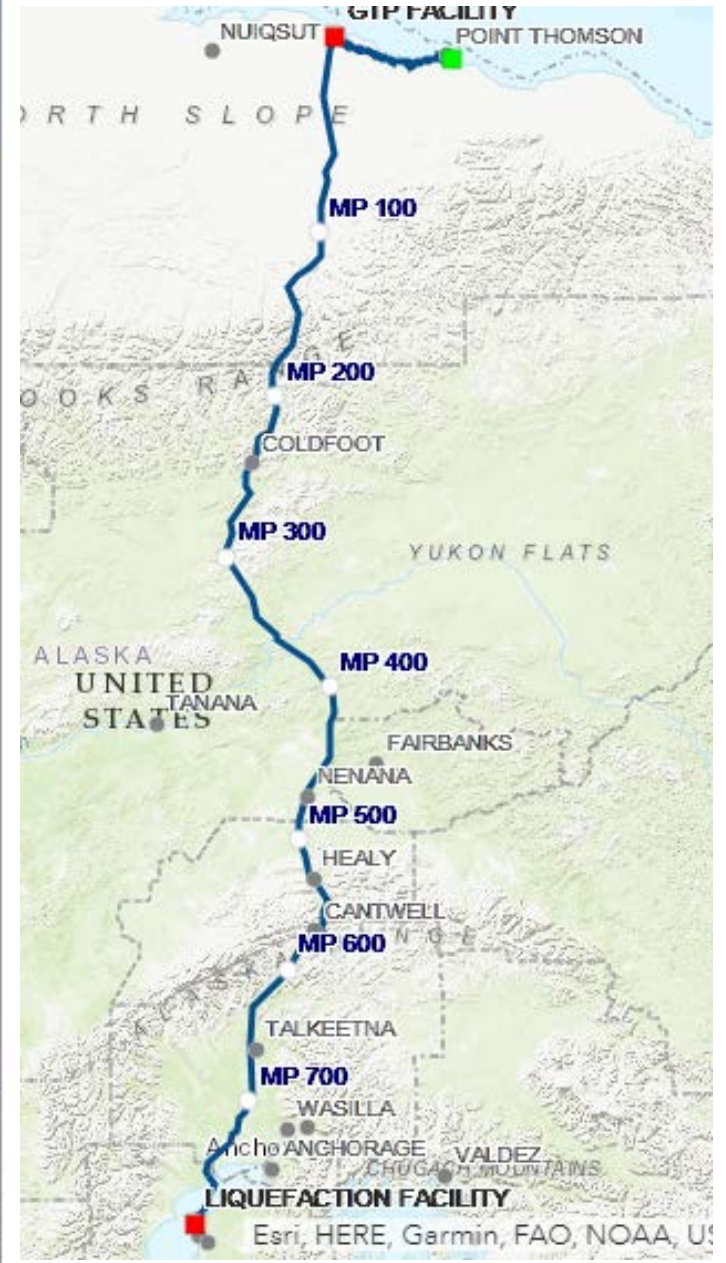
Donlin Gold Project Location & Lake Minchumina Analysis Area

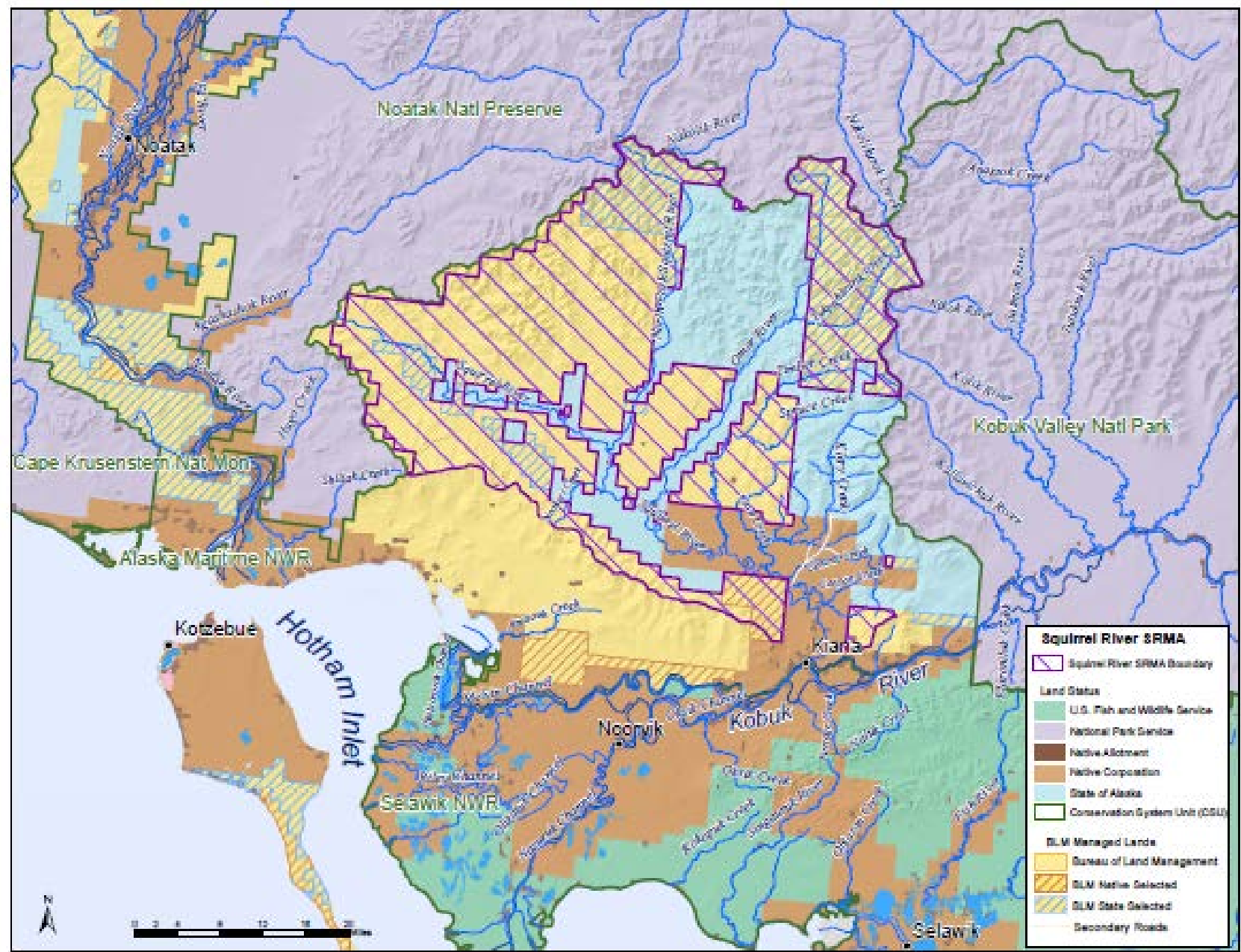


- Natural Gas and Fiber Optic ROW
- Donlin Mine Access Road
- Barge Transportation Corridor
- Iditarod National Historic Trail
- Administered Lands
 - Bureau of Land Management
 - Native Allotment
 - Native Lands (PA or IC)
 - Fish and Wildlife Service
 - Forest Service
 - Military
 - National Park Service
 - State
 - Water

Disclaimer: No warranty is made by the Bureau of Land Management as to the accuracy, reliability, or completeness of these data for individual or aggregate use with other data. Original data were compiled from various sources. This information does not meet National Map Accuracy Standards. This product was developed through digital means and may be updated without notification. The information depicted on this map should be used for graphic display only. For official land status information, refer to Cadastral Survey plans, Master Title Plans, and land status case files.







Squimel River SRMA

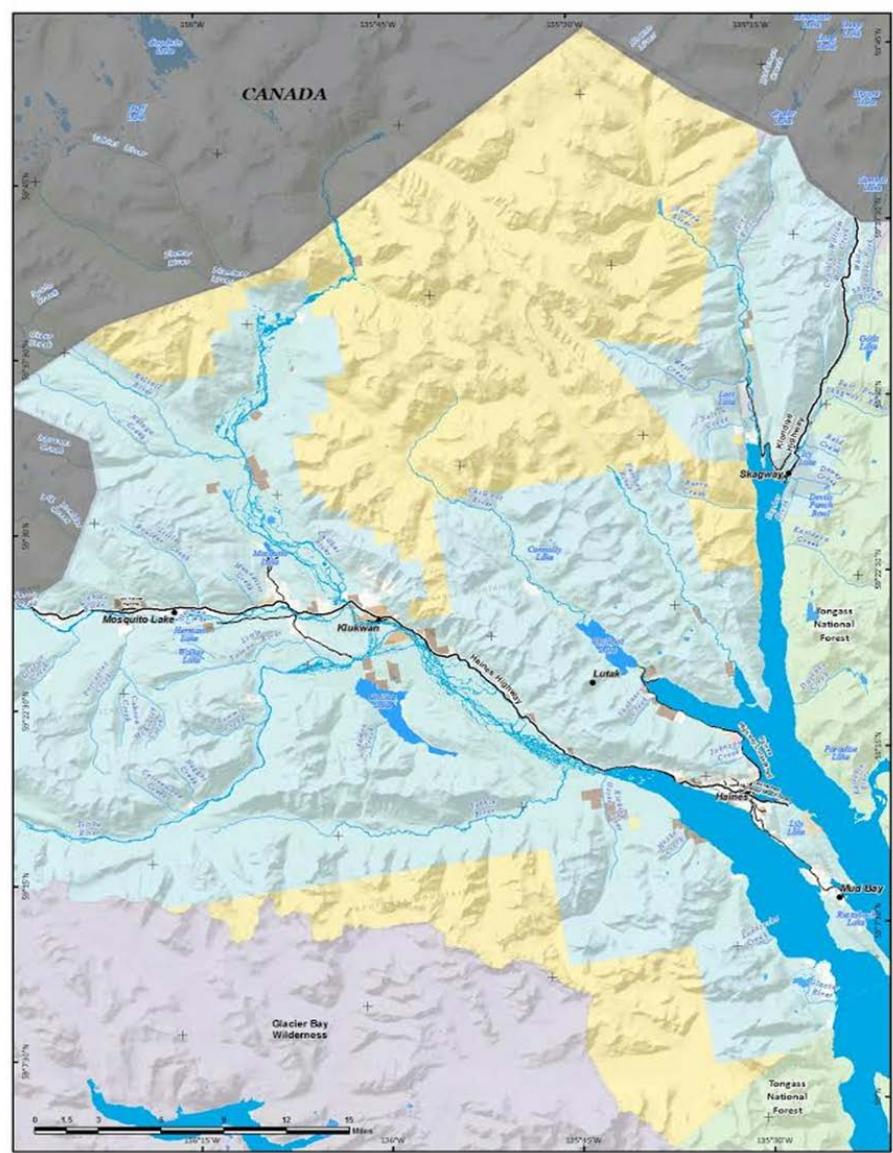
- Squimel River SRMA Boundary

Land Status

- U.S. Fish and Wildlife Service
- National Park Service
- Native Allotment
- Native Corporation
- State of Alaska
- Conservation System Unit (CSU)

BLM Managed Lands

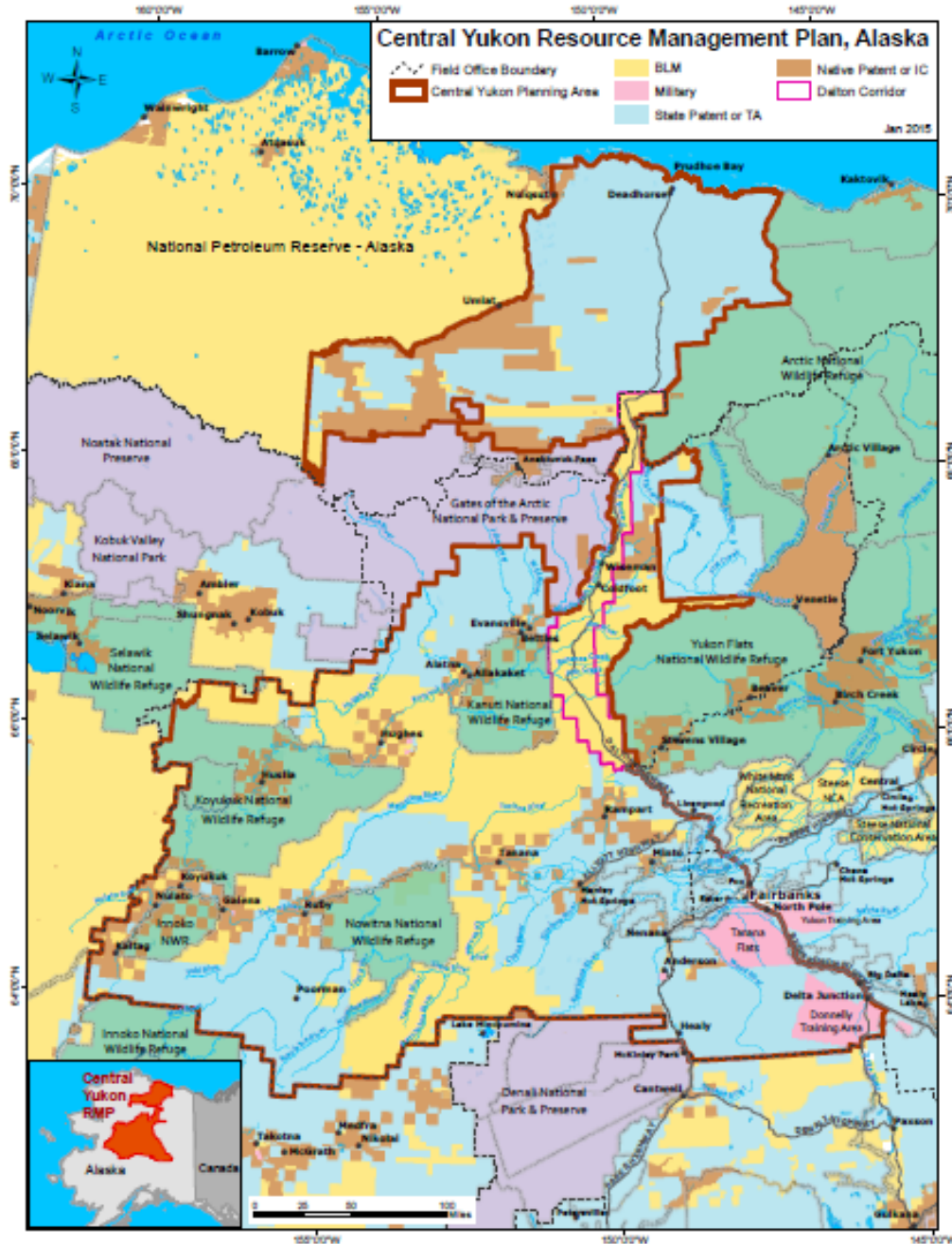
- Bureau of Land Management
- BLM Native Selected
- BLM State Selected
- Secondary Roads

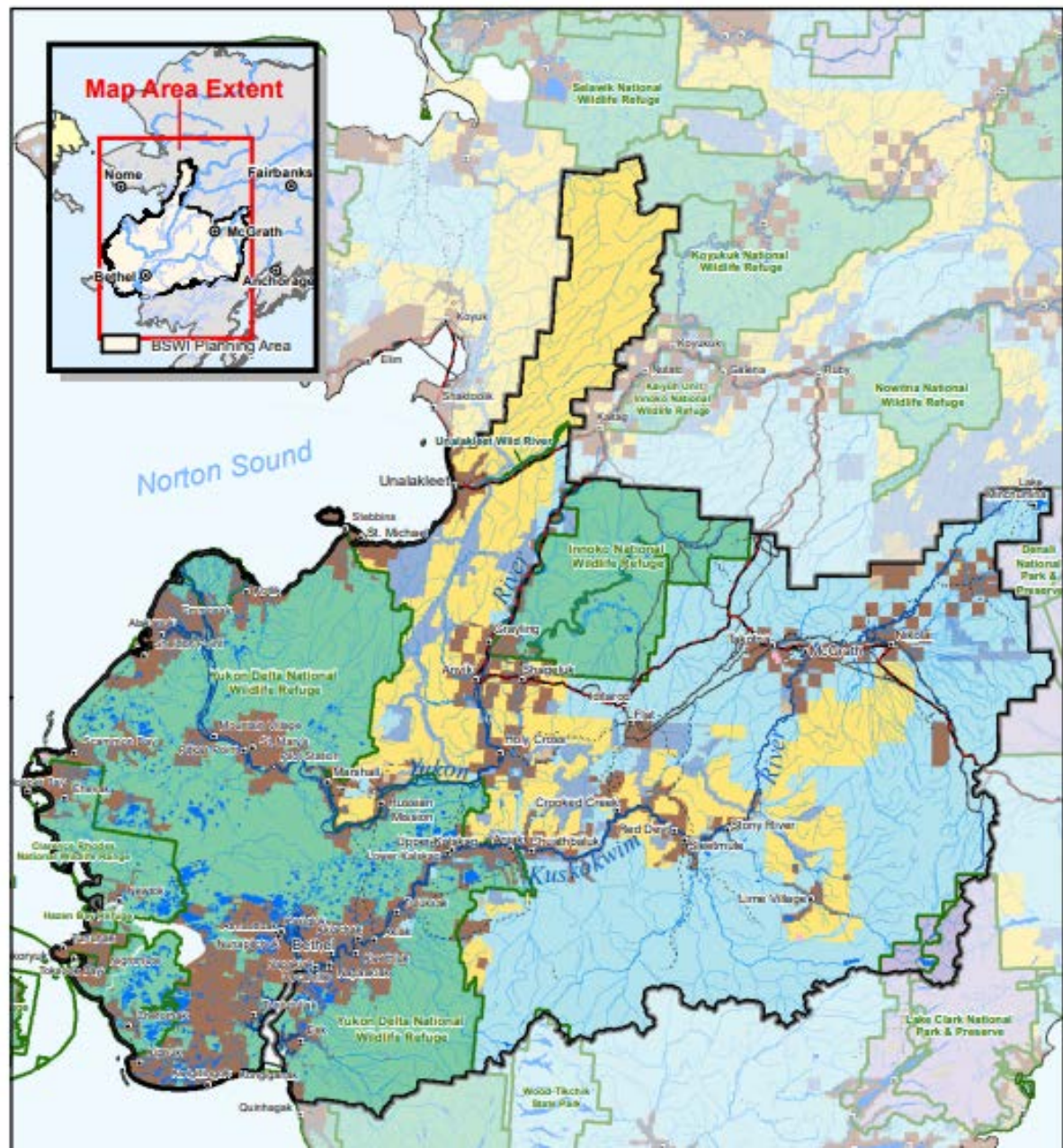


- Populated Place
- Highway
- Road
- Alaska Native Allotment
- Alaska Native Lands: Paired or Interim Conveyed
- Bureau of Indian Affairs
- Bureau of Land Management
- Fish and Wildlife Service
- Forest Service
- Military
- Other Federal
- Local Government
- National Park Service
- Private
- State
- Water

Disclaimer: No warranty is made by the Bureau of Land Management as to the accuracy, reliability, or completeness of these data for individual or aggregate use with other data. Original data were compiled from various sources. This information may not meet National Map Accuracy Standards. This product was developed through digital means and may be updated without notification. The information displayed on this map should be used for graphic display only. For official status information, refer to Cadastral Survey maps, Master Title Plans, and land status case files.









<https://www.blm.gov/programs/planning-and-nepa/plans-in-development/alaska>

FEATURED PLANS AND NEPA IN DEVELOPMENT

Read about featured plans and NEPA documents currently being developed, revised or amended, and get involved in the planning process.

- [Ambler Road EIS](#)
- [Bering Sea-Western Interior RMP](#)
- [Central Yukon RMP](#)
- [Coastal Plain Oil and Gas Leasing EIS](#)
- [Greater Mooses Tooth 2 SEIS](#)
- [Haines Amendment](#)
- [Squirrel River EA](#)
- [SAExploration Inc. Seismic Application](#)
- [Willow Master Development Plan EIS](#)

BLM is a cooperating Agency of the following planning efforts:

- [Alaska LNG EIS](#)
- [Alaska Standalone Pipeline Project SEIS](#)
- [Donlin Gold Project EIS](#)

PLANS IN EFFECT



FREQUENTLY REQUESTED NEPA DOCUMENTS





U.S. Department of the Interior
Bureau of Land Management

Questions?