

Surface Management Status
1:100,000-Scale Topographic Map

2012

U.S. DEPARTMENT OF THE INTERIOR
BUREAU OF LAND MANAGEMENT

Edited and published by the Bureau of Land Management National Operations Center in cooperation with the Bureau of Land Management, Colorado State Office. Planimetry partially revised by Bureau of Land Management from various source materials. Revised information not field checked.

Public Land Survey System derived from the Bureau of Land Management's Geographic Coordinate Data Base. Land status and other source information compiled by Bureau of Land Management. Hypsography, hydrography, boundary, and transportation data derived from U.S. Geological Survey 1:100,000 scale digital line graphs. Digital line graphs based on 1:100,000 scale quadrangle map dated 1981.

Lambert Conformal Conic Projection
North American Datum 1983
National Geodetic Vertical Datum of 1929

There may be private inholdings within the boundaries of the National or State reservations shown on this map. Land lines are omitted in areas of extensive tract surveys.

THIS MAP COMPLETS WITH NATIONAL MAP ACCURACY STANDARDS
In general, BLM Public Lands are open to a number of recreational activities in addition to those that may be highlighted on the map. These activities include camping, fishing, hiking, and hunting. Certain restrictions may apply. Contact appropriate BLM State District, or Field Office for more information.

CONVERSION TABLE, DECLINATION DIAGRAM, ADJOINING MAPS

FOR SALE BY
U.S. DEPARTMENT OF THE INTERIOR
BUREAU OF LAND MANAGEMENT
COLORADO STATE OFFICE
LAKEWOOD, CO 80215
AND
U.S. GEOLOGICAL SURVEY
DENVER, CO 80225

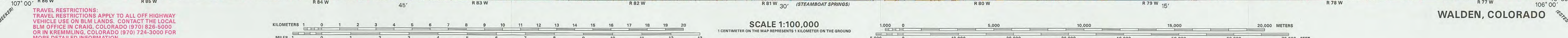
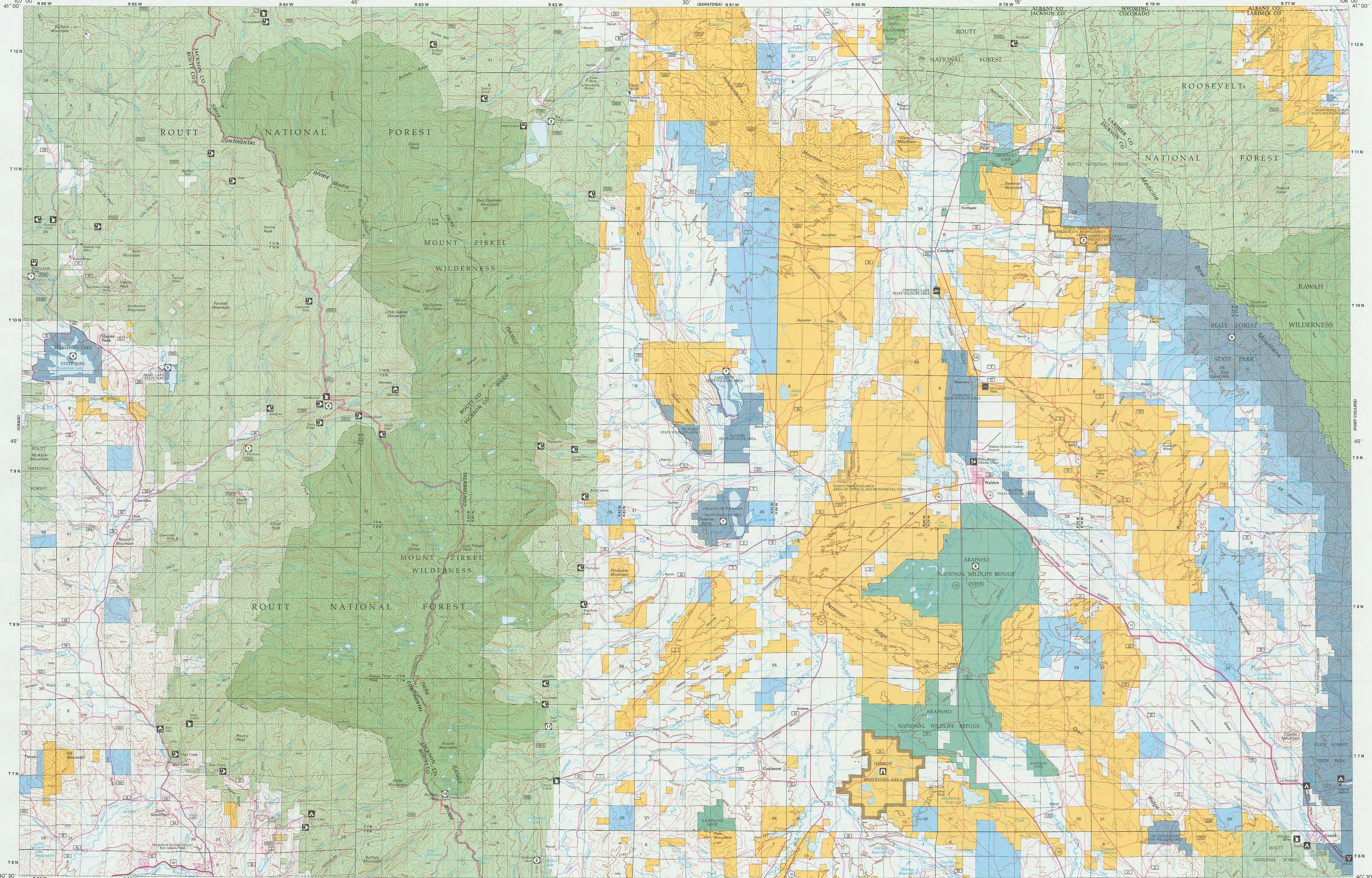
ISBN 978-1-4113-3384-5

TOPOGRAPHIC MAP SYMBOLS

Table of topographic map symbols including primary highways, secondary roads, railroads, bridges, and various terrain features.

NOTE TO MAP USERS
The surface and minerals management status overlays are published as general planning and management tools. Some of the lands, surface and mineral rights, may have been shown as patented lands due to the lack of information available to BLM with respect to the status of acquisition. The warranty is made by the BLM for use of the map for purposes not intended by BLM. The official status of the lands is the responsibility of the Bureau of Land Management or other responsible Federal agencies should be checked for up-to-date status on any specific tract of land. Inquiries in the BLM maps should be reported to the respective Bureau of Land Management offices from which the maps were obtained.

PUBLIC ACCESS
Roads crossing public lands may be travelled by the public unless closed by signage or notice by the land management agency. Public lands reserved by private lands may not have public access. Permission is required from the private landowner to cross private land; unless access is provided by a Federal, State, or County road, or a BLM road with legal access.



RECREATIONAL SYMBOL LEGEND

RECREATION SITES, TRAILS AND AREAS LEGEND

LAND STATUS LEGEND

SPECIAL SYMBOL LEGEND

TOWNSHIP DIAGRAM

INDEX TO 1:24,000-SCALE MAPS