



Surface Management Status 1:100,000-Scale Topographic Map

2012

U.S. DEPARTMENT OF THE INTERIOR BUREAU OF LAND MANAGEMENT

Edited and published by the Bureau of Land Management National Operations Center in cooperation with the Bureau of Land Management Colorado State Office. Planimetry partially revised by Bureau of Land Management from various source materials. Revised information not field checked.

Public Land Survey System derived from the Bureau of Land Management Geographic Coordinate Data Base. Land status and other source information compiled by Bureau of Land Management. Hydrography, Hypsography, Boundary, and Transportation data derived from U.S. Geological Survey 1:100,000 scale digital line graphs. Digital line graphs based on 1:100,000 scale quadrangle map dated 1979.

Lambert Conformal Conic Projection North American Datum 1983 National Geodetic Vertical Datum of 1929

There may be private inholdings within the boundaries of the National or State reservations shown on this map. Land lines are omitted in areas of extensive tract surveys.

THIS MAP COMPLIES WITH NATIONAL MAP ACCURACY STANDARDS. In general, BLM Public Lands are open to a number of recreational activities in addition to those that may be highlighted on the map. These activities include camping, fishing, hiking, and hunting. Certain restrictions may apply. Contact appropriate BLM State District, or Field Office for more information.

CONVERSION TABLE, DECLINATION DIAGRAM, ADJOINING MAPS. Includes a table for meters to feet conversion and a diagram for magnetic declination.

FOR SALE BY U.S. DEPARTMENT OF THE INTERIOR BUREAU OF LAND MANAGEMENT COLORADO STATE OFFICE LAKEWOOD, CO 80215 AND U.S. GEOLOGICAL SURVEY DENVER, CO 80225



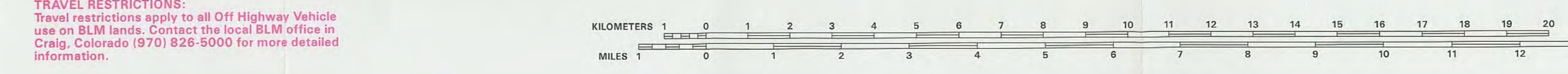
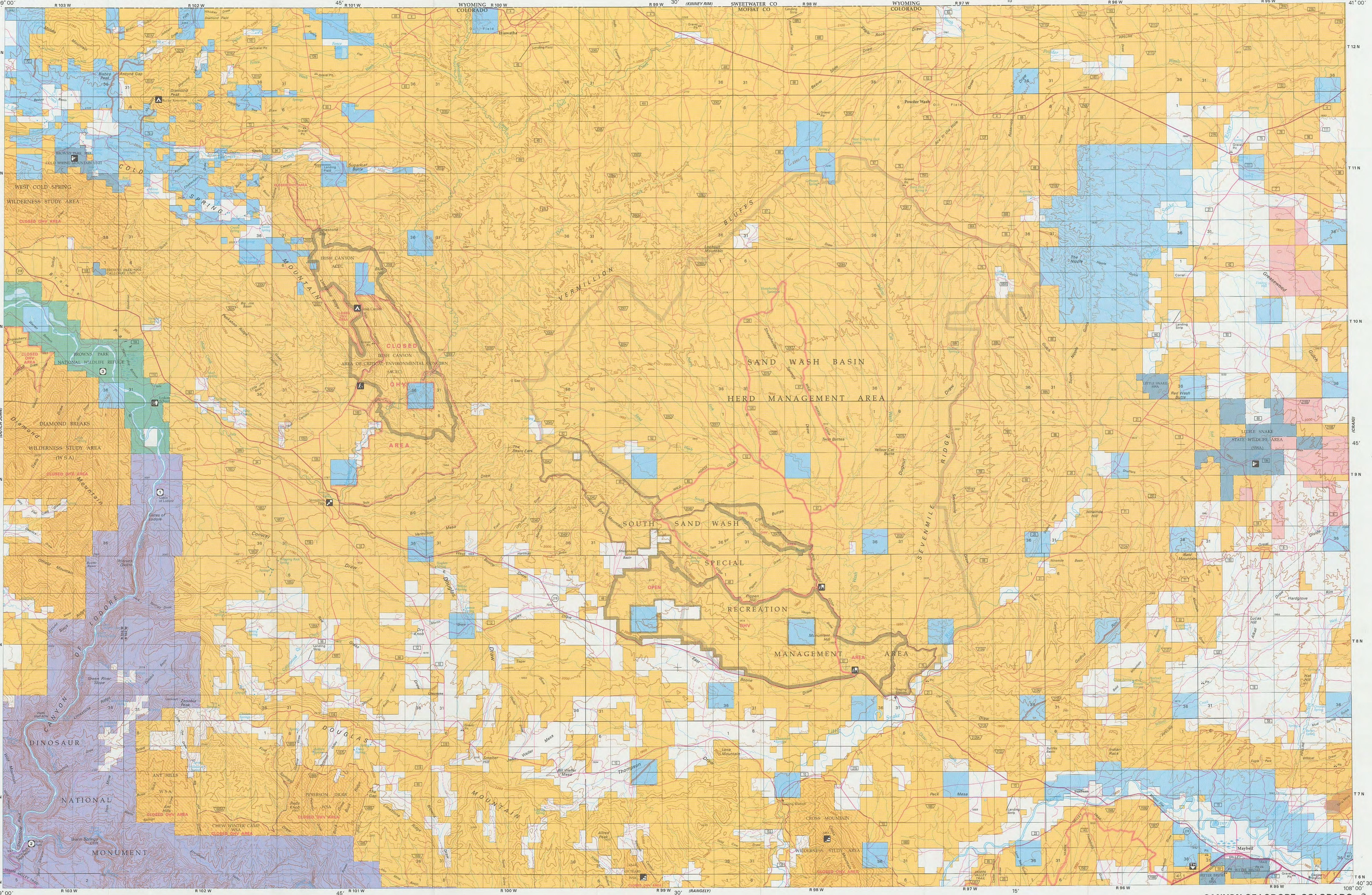
TOPOGRAPHIC MAP SYMBOLS

Table of topographic map symbols including primary highways, secondary roads, trails, and various terrain features.

NOTE TO MAP USERS: The surface and mineral management status overprints are published as general planning and management tools. Some of the lands, surface and mineral rights, may have been shown as patented lands due to the lack of information available to BLM with respect to the nature of acquisition. The official records of the Bureau of Land Management or other responsible Federal agencies should be checked for up-to-date status on any specific tract of land. Inquiries in the BLM maps should be reported to the respective Bureau of Land Management offices from which the maps were obtained.

CANYON OF LODORE, COLORADO

30 X 60 MINUTE SERIES (TOPOGRAPHIC)



RECREATIONAL SYMBOL LEGEND: Table listing symbols for Campground, Hunting, Scenic Geology, etc.

RECREATION SITES, TRAILS AND AREAS LEGEND: Table listing symbols for Visitor Center, Historic Site, etc.

LAND STATUS LEGEND: Table listing symbols for Public Lands and Monuments, National Forest, etc.

SPECIAL SYMBOL LEGEND: Table listing symbols for Route / Trail Marker, Bureau of Land Management, etc.

TOWNSHIP DIAGRAM: Grid diagram showing township and range coordinates.

INDEX TO 1:24,000-SCALE MAPS: Grid diagram for finding specific map sheets.

TRAVEL RESTRICTIONS: Travel restrictions apply to all OHV Highway Vehicle use on BLM lands. Contact the local BLM office in Craig, Colorado (970) 828-5000 for more detailed information.