

Please contact the BLM if there are any concerns with the area. We are all responsible for helping to maintain these resources.

Give snakes their space



**Respect Plants & Animals**  
Watch where you step. Do not harass or feed wild animals or livestock.



**Pack it in / Pack it out**  
Keep the area free from trash and clean for all to enjoy!



**Use Fire Rings**  
Fire rings are provided at the campground.



**Look, Don't Loot!**  
Do not take anything from this area but pictures.



**Be Prepared**  
Bring water, wear sturdy footwear, and take a map.

Etiquette



It is recommended to hike the trail in a clockwise direction, starting at the main kiosk and restroom.

This 1.5 mile easy-to-moderate loop trail traverses desert washes, pinyon-juniper woodlands, and blackbrush scrub. It also features interpretive panels that highlight the area's rich natural and cultural resources.



Trail

The Mt. Irish Archaeological District is a 640-acre area steeped in deep human history. This district falls within the unceded territory of the Newe (Western Shoshone) people.

The district is known for thousands of rock writings which are images pecked into the rock surface (petroglyphs) and painted or drawn on the rock surface (pictographs).

Archaeological District

### Resources



Basin and Range National Monument Website

<https://www.blm.gov/programs/national-conservation-lands/nevada/basin-and-range-national-monument>

Maps - Print and Electronic

Brochures - Monument and Specific Areas

Virtual Site Visits - 3D Documentation

Volunteer Opportunities



Friends of Basin and Range

[friendsofbasinandrange.com](http://friendsofbasinandrange.com)



Nevada Site Stewardship Program

[shpo.nv.gov/stewards](http://shpo.nv.gov/stewards)



**Limited Cell Service Area**  
In Case of Emergency - Call 911 or BLM Dispatch at 775-289-1925

Bureau of Land Management, Ely District,  
Basin and Range National Monument

1400 S. Front St., P.O. Box 237 Caliente, NV 89008

(775) 726-8100

The Mt. Irish trail and campground were funded through the Lincoln County Archaeological Initiative with funds obtained through the sale of public lands administered by the Bureau of Land Management in Lincoln County, Nevada and approved under an interagency partnership authorized by the Lincoln County Land Act.

### Campground



Online: [shpo.nv.gov/report-damage](http://shpo.nv.gov/report-damage)  
Call: 702-486-5011



It is illegal to remove, damage, or destroy archaeological resources. Please report any theft or damage to the Nevada Site Stewardship Program.

### Prepare to Visit

#### Limited cell service

- Let someone know where you are going
- Download maps in advance

#### Check the weather

- Area is prone to temperature extremes
- Washes can flood from heavy rain

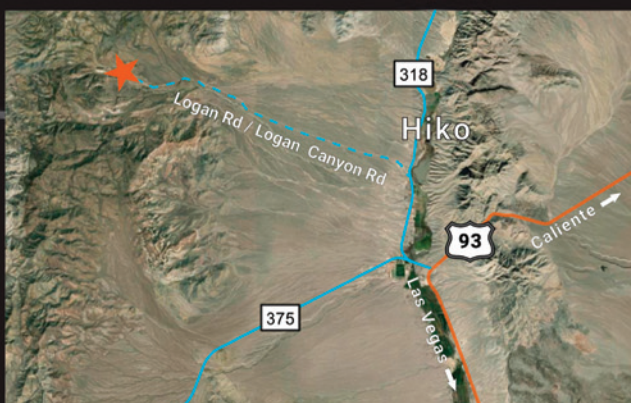
#### Services are limited

- No trash bins
- No water
- No firewood collecting

### Directions

From the junction of SR 375 and SR 318, head north for approximately 3 miles. Turn left onto Logan Rd. and head east for approximately 9 miles.

Logan Rd. is a fairly well-graded dirt road, but there are a few areas where a higher-clearance vehicle is recommended.

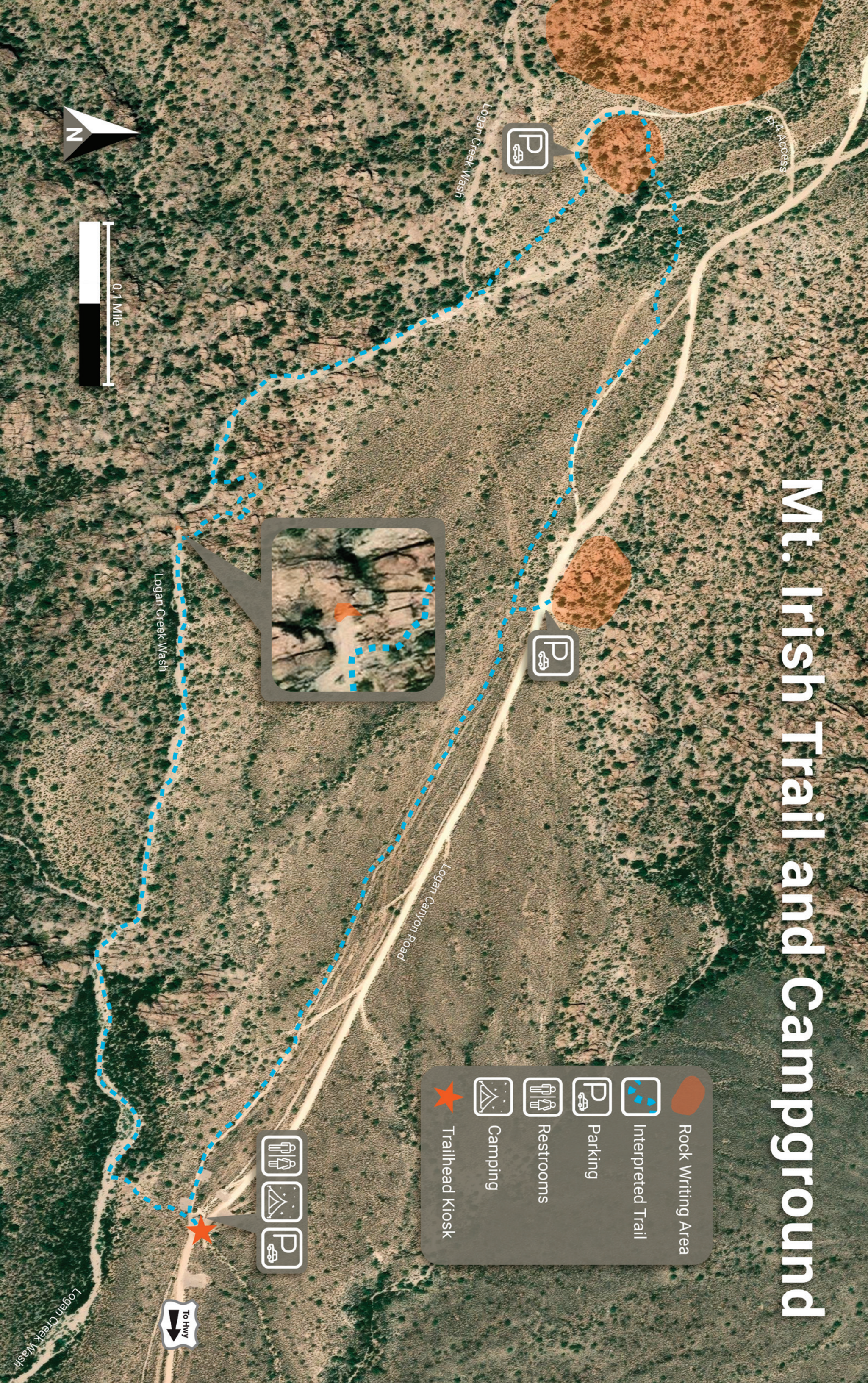


**NATIONAL CONSERVATION LANDS**

# Mt. Irish Trail & Campground



# Mt. Irish Trail and Campground



4x4 Access

Logan Creek Wash

Logan Canyon Road

Logan Creek Wash

Logan Creek Wash



- Rock Writing Area
- Interpreted Trail
- Parking
- Restrooms
- Camping
- Trailhead Kiosk

- Restrooms
- Camping
- Parking

