

Northern Nevada Correctional Center & Bureau of Land Management Wild Horse and Burro Adoption



Saturday, February 22, 2025

Up to 19 saddle-started wild horses will be available for adoption!

Event location:

Northern Nevada
Correctional Center
1721 Snyder Avenue
Carson City, Nevada
89701



9:00 – 10:00 am: Preview Wild Horses
10:00 am: Competitive bid adoption begins





The gentling and saddle-training program in Carson City began in October 2000 as a cooperative effort between the Nevada Department of Corrections – Silver State Industries and the Nevada Department of Agriculture to train stray/feral horses removed from lands administered by the State of Nevada. BLM joined the partnership in 2004 and now the inmates train only wild horses and burros removed from public lands administered by the Bureau of Land Management.

The Northern Nevada Correctional Center (NNCC) and Bureau of Land Management (BLM) host three public adoptions each year with horses and burros offered through a competitive-bid process conducted by an auctioneer. Approximately 45-60 wild horses (and burros) are trained and adopted each year at these events. In addition, the NNCC also starts horses for other federal and state agencies such as the U.S. Border Patrol, the National Park Service, Law Enforcement Mounted Units, Military Mounted Units, and Nevada's Fish and Wildlife agencies.

Over 500 inmates have participated in the program, often coming with little or no experience working with horses. The inmates give each horse (or burro) approximately 120 days of training. The animals are essentially "green broke" and will need additional daily training and handling by an experienced rider when at their new home.

Learn more about this exceptional program by going to the NNCC page located on the BLM website at <https://go.usa.gov/xEk8t>.

Stay up to date on the wild horse and burro program, upcoming events, and news, by following the BLM Nevada Facebook page at <https://www.facebook.com/BLMNevada>. In addition, a Facebook group called "NNCC Adopted Wild Horses & Burros" was established by and for adopters to post updates of their horses from the NNCC program and to use as a resource for questions.

- Adoption Bids start at \$150.00 -

All trained animals will only be offered for adoption once during the event.

Adopters must meet BLM adoption requirements to bid: <https://go.usa.gov/xmcwS>

Directions traveling south from Carson City:

From US-395 (Carson Street), take Snyder Avenue (go left - NV State Route 518) east for 1.5 miles. Turn south (right) at the NNCC sign and look for directional signs at the far south end of the facility.

Directions traveling south from Reno:

Take 1-580 South to Carson Street and turn north (right). Take Snyder Avenue (go right - NV State Route 518) east for 1.5 miles. Turn south (right) at the NNCC sign and look for directional signs at the far south end of the facility.

NO TOBACCO OR CELL PHONES ARE PERMITTED ON THE GROUNDS DURING THE EVENT

NO PHOTOGRAPHY WITHOUT MEDIA CREDENTIALS OR PRIOR APPROVAL



Order and Information of the Animals

No.	Horse ID	Age	Trainer	Horse	Sex	HMA	Color	Height	Weight
1	18900053	7	John Slowiak	Jaws	G	Twin Peaks (CA0242)	Sorrel	15.3	1,100
2	17771738	8	Damarion Bell	Three	G	Roberts Mountain (NV0607)	Bay	15.0	1,075
3	21903273	4	Vince Uhlmer	American Legend	G	Clan Alpine (NV0310)	Sorrel	15.0	1,000
4	21901606	4	Brian Ojeda	Whiskey	G	Antelope Valley (NV0107)	Grulla	15.0	900
5	17900065	8	Brevyn Bird	Melvin	G	Twin Peaks (CA0242)	Sorrel	15.2	1,050
6	21771742	4	Shawn Goode	Twister	G	Roberts Mountain (NV0607)	Bay	15.1	975
7	20903146	5	Marco Mendez	Platiado	G	Clan Alpine (NV0310)	Gray	14.2	900
8	18903277	7	Thomas Meagher	Ghost	G	Clan Alpine (NV0310)	Gray	15.2	1,075
9	21903323	4	Damarion Bell	Amari	G	Clan Alpine (NV0310)	Gray	14.3	950
10	20903355	5	Demariea Doucet	Montana	G	Clan Alpine (NV0310)	Bay	14.3	950
11	19895230	6	Leonard Glover	Cross	G	Bufalo Hills (NV0220)	Gray	14.2	975
12	19903431	6	Marco Mendez	El Vale	G	Clan Alpine (NV0310)	Gray	14.2	950
13	19771728	6	Salvatore Limina	Meeks	G	Roberts Mountain (NV0607)	Bay	15.1	1,100
14	18903256	7	Shawn Goode	Tango	G	Clan Alpine (NV0310)	Dun	14.2	900
15	21771718	4	Thomas Burt	Dale Earn Horse	G	Roberts Mountain (NV0607)	Buckskin	14.3	975
16	19903352	6	Adam McGregor	Shadow	G	Clan Alpine (NV0310)	Black	14.3	950
17	18903473	7	Demariea Doucet	Dakota	G	Clan Alpine (NV0310)	Gray	14.3	923
18	21895633	4	Leonard Glover	Sunny	G	Twin Peaks (CA0240)	Dun	15.0	1,000
19	19635848	6	James O'Brien	Moose	G	Choke Cherry (UT0443)	Bay	15.2	1,000

Jaws #0053



Jaws has been a pleasure to work with. He is a good-looking and tall sorrel who is quick on his feet and has a lot of go. He is soft in the mouth and very responsive to cues. He likes to work and will be an awesome ranch horse. Jaws has conquered his fears rather quickly, making him a joy to train.

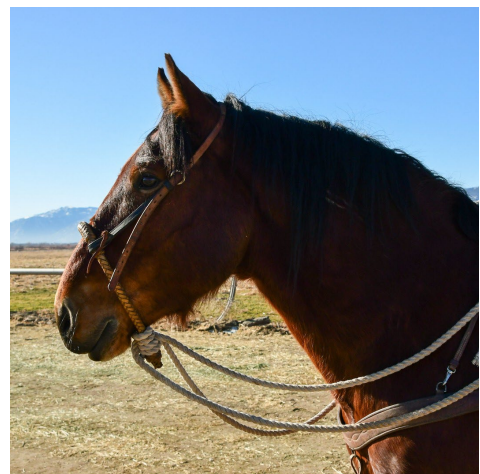


Freezemark: 18900053
Age: 7
Sex: G
Height: 15.3
Weight: 1,100
HMA: Twin Peaks (CA0242)
Trainer: John Slowiak

Three #1738



If you are looking for a big, strong, ranch type of horse, then Three is your horse! He responds well to leg cues, is very gentle, and loves to be pet. You can rope a dummy off him, drag logs, and he has been ridden in a hackamore with no trouble. Three has a steady trot and a smooth lope. This sturdy bay is made to work, work, work!



Freezemark: 17771738
Age: 8
Sex: G
Height: 15.0
Weight: 1,075
HMA: Roberts Mountain (NV0607)
Trainer: Damarion Bell

American Legend #3273



American Legend is a pleasure to work with everyday. He is a gentle 4 year old sorrel and he has completed every task I have given him. He trailer loads, walks, trots, lopes, and is responsive to cues. He has become a great partner and is very trusting as I can handle all four feet with ease. This sorrel will make a great addition to any ranch or family.

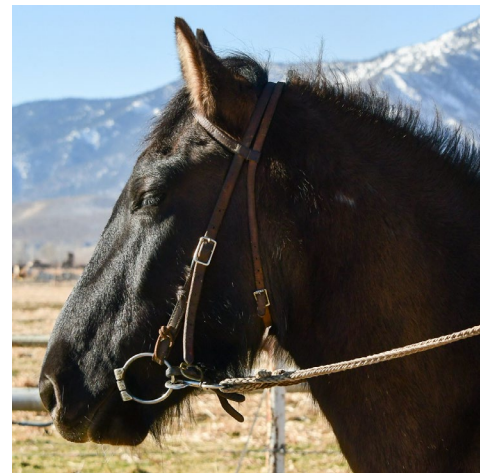


Freezemark: 21903273
Age: 4
Sex: G
Height: 15.0
Weight: 1,000
HMA: Clan Alpine (NV0310)
Trainer: Vince Uhlmer

Whiskey #1606



Whiskey is a very handsome and super gentle horse. He will always obey and is willing to work. He lifts all four feet, trailer loads easily, and has been ridden bareback with no problems. He is very energetic which makes him always ready and willing to learn and work. Whiskey has an interesting personality that has captured a special place in my heart.



Freezemark: 21901606
Age: 4
Sex: G
Height: 15.0
Weight: 900
HMA: Antelope Valley (NV0107)
Trainer: Brian Ojeda

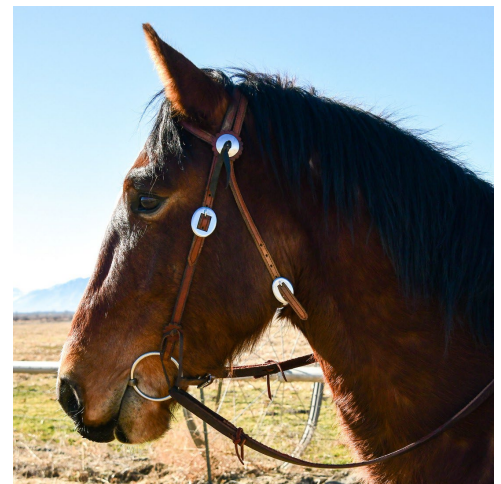
Melvin #0065



Freezemark: 17900065
Age: 8
Sex: G
Height: 15.2
Weight: 1,050
HMA: Twin Peaks (CA0242)
Trainer: Brevyn Bird

Melvin is a large sorrel with a lot of go. He handles well in a snaffle and responds well to leg cues. He is very confident and is quick to pick up any job you ask of him. He trots out good and is willing to pick up a lope from a trot. Melvin does not need spurs and responds well to cues.

Twister #1742



Freezemark: 21771742
Age: 4
Sex: G
Height: 15.1
Weight: 975
HMA: Roberts Mountain (NV0607)
Trainer: Shawn Goode

Twister is a young bay with a trusting disposition. Of all the horses that I have trained, this one is the best so far. He has been trained with the lariat and neck reins really well. He has multiple speeds in a trot and lope and moves his shoulders and hips well. He has a nice side pass, seat stop, and back up too. You can ride him bareback. Twister has great gate etiquette, trailer loads, and is able to have all four feet handled and trimmed. He also has experience around cattle and I know you will very much appreciate this mustang.

Platiado #3146



Platiado is a super gentle gray gelding that is very friendly once you pet him and gain his trust. He will follow you around even without a halter and he has been ridden bareback with no trouble. He walks, lopes, stops, side passes, and backs up on command which makes Platiado a great ride and an absolute pleasure to work with.



Freezemark: 20903146
Age: 5
Sex: G
Height: 14.2
Weight: 900
HMA: Clan Alpine (NV0310)
Trainer: Marco Mendez

Ghost #3277



Ghost is a gray gelding with a tall, lean, athletic build. He rides well in a snaffle bit or hackamore. He has a gentle nature and is eager to learn. He is very responsive, quick, and agile, and will make a great ranch horse. I have moved cattle on him, rode up and down inclines, and have started him on roping. Take Ghost to a good home!



Freezemark: 18903277
Age: 7
Sex: G
Height: 15.2
Weight: 1,075
HMA: Clan Alpine (NV0310)
Trainer: Thomas Meagher

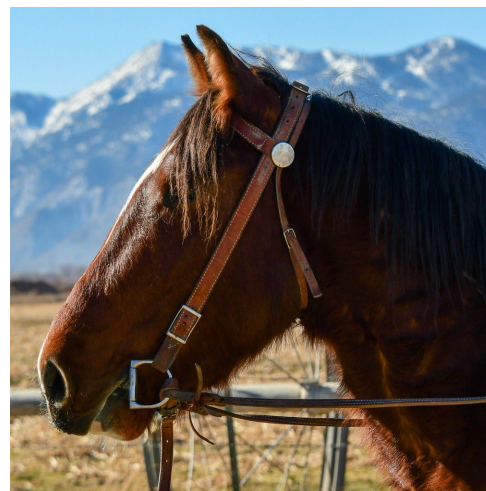
Amari #3323



Freezemark: 21903323
Age: 4
Sex: G
Height: 14.3
Weight: 950
HMA: Clan Alpine (NV0310)
Trainer: Damarion Bell

Amari is an absolute pleasure to work with as he is a small horse that has something to prove. You can rope a dummy off of him or pull logs since he likes to work. He is also good tempered and loves to be pet or groomed. Amari has a great trot or smooth lope and gets along with other horses. You can ride him in a hackamore while bareback with no problem and he opens gates and picks up all four feet making him a real joy to train.

Montana #3355



Freezemark: 20903355
Age: 5
Sex: G
Height: 14.3
Weight: 950
HMA: Clan Alpine (NV0310)
Trainer: Demariea Doucet

Montana is a nice bay with a good stop. He follows cues well and picks up all four feet. You can rope a dummy off him as well as drag it. Montana has also been ridden by many other trainers so he is ready for you to take him to a great home.

Cross #5230



Freezemark: 19895230
Age: 6
Sex: G
Height: 14.2
Weight: 975
HMA: Buffalo Hills (NV0220)
Trainer: Leonard Glover

Cross is a handsome gray with a compact and stocky composition. He has great gate manners while in the saddle or on the ground. He loves being groomed and picks up all four feet with ease. He can be saddled, mounted, and dismounted from either side. I have roped a dummy off him, dragged the sled, and have no problem trailer loading him. Cross has a steady trot, a smooth lope, and can side pass with the slightest leg cues. He has been ridden mostly in a snaffle and hackamore and he is a pleasure to ride.

El Vale #3431



Freezemark: 19903431
Age: 6
Sex: G
Height: 14.2
Weight: 950
HMA: Clan Alpine (NV0310)
Trainer: Marco Mendez

El Vale is a wise and gentle gray that is always willing to work and obey. He has a nice lope and trot, side passes, and can be ridden bareback. He has been ridden with spurs and is ready to go to a good home.

Meeks #1728



Meeks is a big bay with a lot of personality. He will pick up all four feet when told and can trailer load. He is very responsive with cues and is ready to go to a good home.



Freezemark: 19771728

Age: 6

Sex: G

Height: 15.1

Weight: 1,100

HMA: Roberts Mountain (NV0607)

Trainer: Salvatore Limina

Tango #3256



Tango is a smaller horse with great body lines. He might be the smallest in the program but he has the biggest heart of them all. We've done some trail rides and he will cross through 3 feet of water easily and is comfortable around cattle. Tango responds to cues well, has good gate etiquette, trailer loads, and you can handle all four feet.



Freezemark: 18903256

Age: 7

Sex: G

Height: 14.2

Weight: 900

HMA: Clan Alpine (NV0310)

Trainer: Shawn Goode

Dale Earn Horse #1718



“Ernie” is a beautiful and friendly buckskin with an amazing disposition. He has over 100 rides and is sure footed and sound all around. I have used snaffle bits, tom thumb bit, and spurs to help train him. Ernie is a real pleasure to ride and I am going to miss him when you cast the winning bid.

Freezemark: 21771718

Age: 4

Sex: G

Height: 14.3

Weight: 975

HMA: Roberts Mountain (NV0607)

Trainer: Thomas Burt

Shadow #3352



Shadow is extremely intelligent, a quick learner, and a very curious black mustang. He is very forgiving toward a novice rider such as myself and he aims to please. Shadow is quite agile and responds well to the bit.

Freezemark: 19903352

Age: 6

Sex: G

Height: 14.3

Weight: 950

HMA: Clan Alpine (NV0310)

Trainer: Adam McGregor

Dakota #3473



Dakota is a nice gray mustang that is a real joy to ride. He listens to all cues and moves his shoulders and hips with good motion. He has gate manners and you can pick up all four feet. Dakota stops on a dime and is ready for a good home.



Freezemark: 18903473
Age: 7
Sex: G
Height: 14.3
Weight: 925
HMA: Clan Alpine (NV0310)
Trainer: Demariea Doucet

Sunny #5633



Sunny is a very attractive dun that is very friendly and a quick learner. Whether catching, haltering, or saddling, all go very smoothly. His lope, trot, and walk are very mellow and I have roped a dummy and dragged a sled off of him. He moves his shoulders and hips independently and side passes with ease. His feet are easy to clean and trim as he picks up all four feet with no problem. He rides with a snaffle bit mostly but occasionally a hackamore. Sunny will make a great trail horse.



Freezemark: 21895633
Age: 4
Sex: G
Height: 15.0
Weight: 1,000
HMA: Twin Peaks (CA0242)
Trainer: Leonard Glover

Moose #5848



Freezemark: 19635848

Age: 6

Sex: G

Height: 15.2

Weight: 1,000

HMA: Choke Cherry (UT0443)

Trainer: James O'Brien

Moose is a very loving bay mustang. He is fun to ride and can be used for work or pleasure. He is very light in the mouth. He can be neck reined or be steered with your legs making for an enjoyable ride.



Bureau of Land Management Herd Management Areas

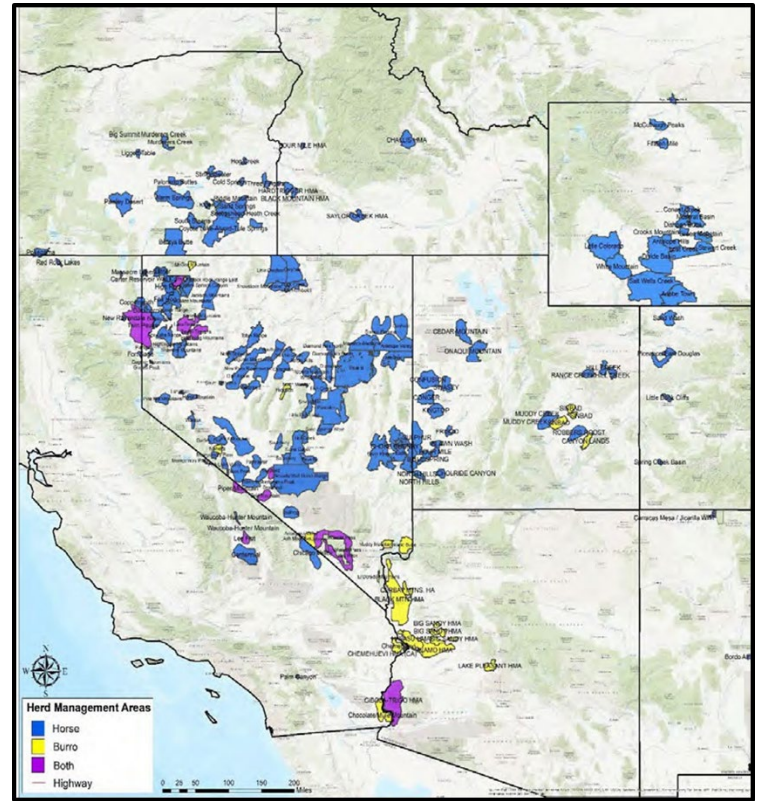
The BLM manages wild horses and burros in 177 herd management areas (HMA) on nearly 26.9 million acres of public land across 10 western states. Each HMA is unique in its terrain features, local climate, and natural resources, just as each herd is unique in its history, genetic heritage, coloring, and size distribution.

Wild horses and burros are managed as *part* of the BLM's multiple-use mission, with the goal of supporting healthy wild horses and burros on healthy public rangelands. To protect the health of the land and to support healthy horses and burros, the BLM works to achieve in HMAs what is known as the Appropriate Management Level (AML).

AML is the point at which wild horse and burro populations are consistent with the land's capacity to support them and other mandated uses of those lands, including protecting ecological processes and habitat for wildlife and livestock. The AML for each HMA ranges from a minimum population level to a maximum population level in order to allow for population growth over a four- to five-year period. The BLM establishes AML through the evaluation and analysis of rangeland resource and population data spanning several years, including data relating to vegetation and soil types, weather, and water. The AML for each HMA is set in an open, public process through field office planning efforts.

How wild horses and burros are managed differs from how most other species are managed on public lands. Wildlife species, such as deer, are usually controlled through a combination of hunting and natural predators. Livestock use on public lands is intricately managed and controlled through grazing permits. Because wild horses and burros are protected from hunting, and because of a lack of natural predators, if left unmanaged herds can double in size in just four to five years and quickly outgrow the ability of the land to support them. Maintaining herd size at the appropriate management level is the best way to ensure healthy horses and burros on healthy rangelands.

The current nationwide, maximum population level on the range is 26,785 animals. For more information about all the BLM's HMAs, visit the BLM website's herd management areas section at <https://go.usa.gov/xm3p9>.



Frequently Asked Questions

What is prohibited on the grounds and are cameras allowed?

- No tobacco products or cell phones are permitted on the grounds during the event.
- No photography is permitted without media credentials or prior approval.

How much training do the animals actually have?

- The animals are “green broke” which means they have received up to 120+ days of training by the inmates. They will continue to need daily training to reinforce the basics they have learned. Most of the horses will initially need an experienced rider.

Can we preview the animals before the adoption event?

- No, since this is a prison facility, the animals cannot be viewed until the morning of the adoption.

What is the average sale price of saddle-started horses trained by prison inmates?

- Prices vary wildly. The bids have gone as high as \$18,000. However, the average price is between \$1,500 to \$3,500 per animal. It really depends on how many people are interested in each animal.

Do I have to be present to adopt a wild horse or burro? Can I send my friend?

- You must be present to adopt a wild horse or burro. You cannot send a family member or a friend. The person signing the “Private Maintenance and Care Agreement” will be the legal adopter and the only person who can apply for a title after one year of proper care.

What are the facility requirements?

- The minimum size corral is 20'x20', which is also the recommended size until the adopted animals becomes easy to catch. Even though the horses are green broke, they may startle easily and attempt to jump over the corral; therefore, a minimum corral height of 5' made from heavy duty construction materials using poles, pipes, or planks with at least 1 ½ inch thickness, and without dangerous protrusions, is required. Barbed wire, large-mesh-woven, stranded, and electric materials are unacceptable for fencing.
- Some form of shelter must be available, within the corral area, to mitigate the effects of inclement weather and temperature extremes. Acceptable shelters include natural cover such as trees or man-made structures.

Do I have to pick up the animal I adopt the day of the adoption event?

- The BLM prefers that you take the horse or burro home the day of the adoption, but special arrangements can be made with the prison to pick up the animal within a couple of days.

What are the trailer requirements for hauling my animal home?

- The BLM recommends stock type trailers; three-horse slant load trailers are acceptable. Other types of trailers will be evaluated on a case-by-case basis. Trailers must meet the following minimum conditions:

- Covered top, sturdy walls and floors, and a smooth interior, free from any sharp protrusions.
- Ample headroom, adequate ventilation and floors covered with a non-skid material.
- Removable partitions or compartments to separate animals by size and sex, if necessary.
- BLM personnel will inspect the safety of each trailer and reserves the right to refuse loading if the trailer is unacceptable.

Adoption Application, Requirements, Payment and Refund Information

You can fill out a BLM adoption application for a wild horse or burro at the adoption event, or you can fill one out in advance. To download the application (Form 4710-10), please go to <https://go.usa.gov/xEkhV>.

Adoption Requirements

- Adopters must be 18 years old. Parents or guardians may adopt and allow a younger family member to care for the animal.
- Have no prior conviction for inhumane treatment of animals or for violating the Wild Free-Roaming Horse and Burro Act.
- Have adequate feed, water, and facilities (at least 400 square feet for each animal) to provide humane care for the number of animals requested.
- Provide a home for the animal in the United States until you receive the Certificate of Title from the BLM.

Payment Types

- The BLM would prefer payments made on credit cards.
- The BLM also accepts personal checks, money orders, travelers' checks, and cash as payment for adoption fees.

Refunds

- In spite of efforts to provide adopters with healthy animals, situations can arise in which unrecognized lameness or health problems surface following adoption. Upon request, an adopter may receive a credit for in the amount of the original adoption fee toward a replacement animal if the following conditions apply:
 - Within six months of the original adoption, the adopter provides a signed statement from a veterinarian that the animal died, had to be euthanized, or was diagnosed with an incurable illness or lameness attributable to a condition that already existed at the time of adoption.

- The death, development of the illness, or lameness of the animal must not have been preventable with proper care from the adopter.
- The request for replacement, with the substantiating veterinarian's statement, must be received by the BLM no later than 30 days after the animal's death or diagnosis.
- Adopters shall return live animals to the BLM. Should the animal have been euthanized or died, the adopter is responsible for the disposal of the carcass.
- BLM will issue the original adopter an adoption fee voucher with the following stipulations:
 - The voucher will be the same amount paid at the time of the original adoption.
 - Valid for one year from the date issued.
 - Redeemable toward the fee to adopt another animal at an upcoming satellite adoption event, internet adoption, or during a regularly scheduled Northern Nevada Correctional Center adoption.
 - The voucher cannot be used at an event sponsored by the Mustang Heritage Foundation (MHF).
 - The voucher is only good for one animal.
 - If the fee for the replacement animal is more than the original adoption fee, the adopter will be required to pay the balance. If the fee for the replacement animal is less than the original adoption voucher amount, the remaining balance will be forfeited.
 - No other refunds or exchanges will be approved.

**The next NNCC adoption is tentatively
scheduled for June 21, 2025**