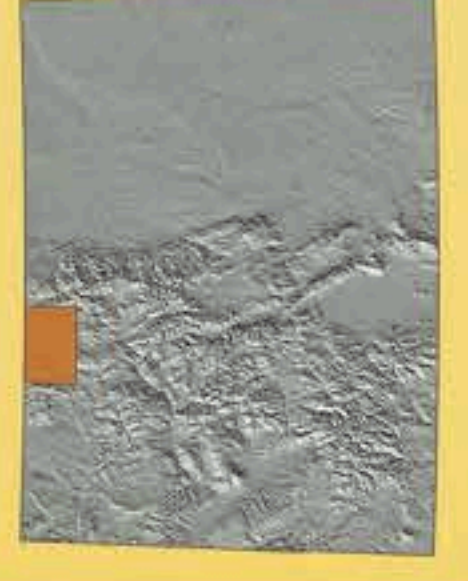


COLORADO
Walden



Surface Management Status
1:100,000-Scale Topographic Map



2017

U.S. DEPARTMENT OF THE INTERIOR
BUREAU OF LAND MANAGEMENT

Edited and published by the Bureau of Land Management
of Land Management, Colorado State Office. All other content
is the property of the Bureau of Land Management. Information not field
checked.

Public Land Survey System derived from the Bureau of Land
Management's Geographic Coordinate Data Base and
National Geodetic Vertical Datum of 1929.

This map may be provided in hard copy or digital format.
The National or State Reservations shown on this map
and their boundaries are based on the most recent boundary
survey data available to the Bureau of Land Management.
These boundaries include boundary, fishing, and hunting
rights. For more information, contact the nearest BLM State
Director or Field Office for more information.

CONVERSION TABLE DEPARTMENT DIAGRAM ADMINISTRATION MAPS

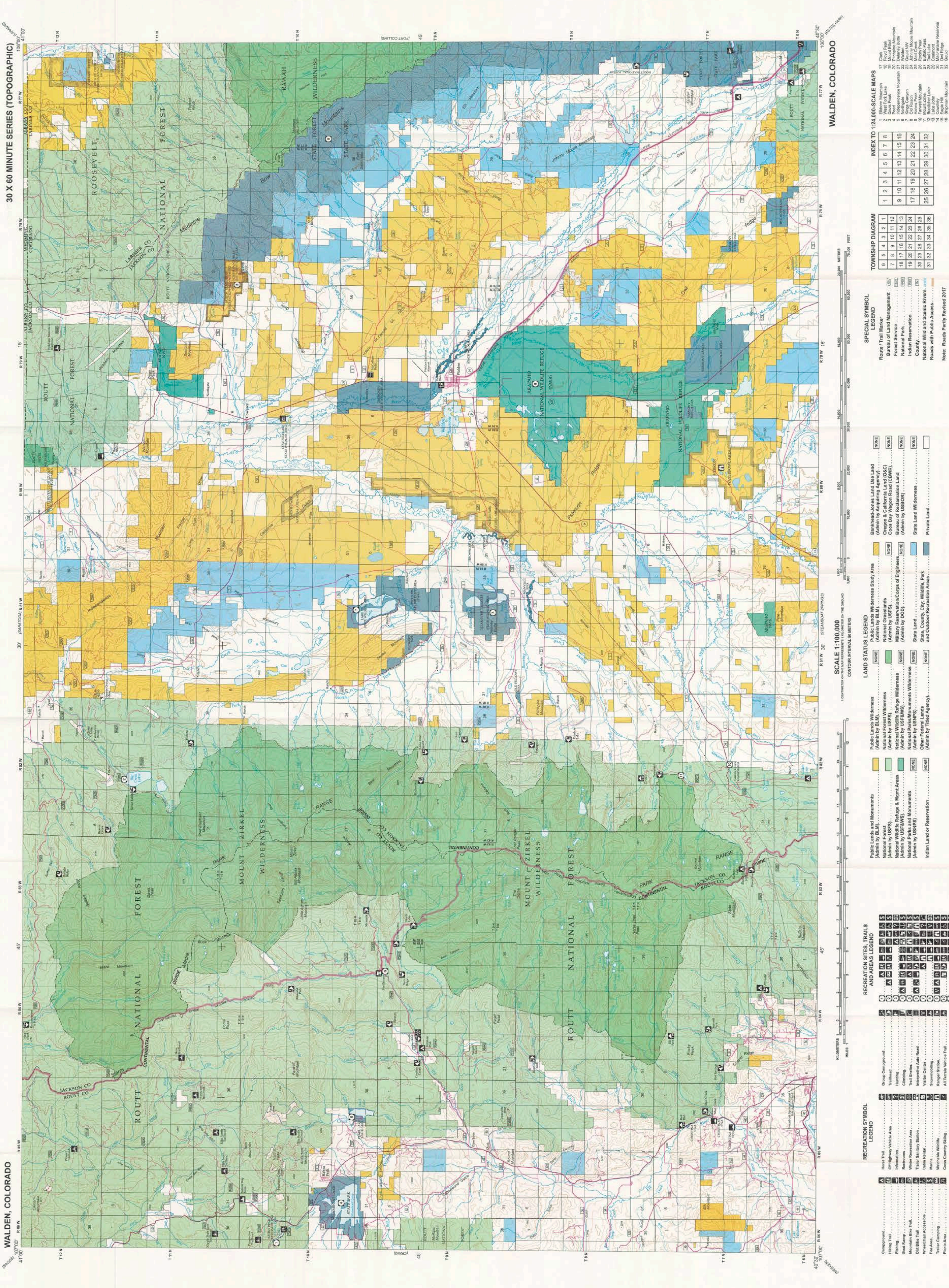
METERS	FEET
2286	7517
2743	9012
2743	9012
3048	10000
3048	10000
3658	12000
4268	14000
4878	16000
5488	18000

FOR SALE BY
U.S. DEPARTMENT OF THE INTERIOR
BUREAU OF LAND MANAGEMENT
3015 W. 10TH AVENUE
LAKWOOD, CO 80015



TOPOGRAPHIC MAP SYMBOLS

TOPOGRAPHIC MAP SYMBOLS table listing various symbols for roads, trails, water, and boundaries.



INDEX TO 1:24,000-SCALE MAPS

1	2	3	4	5	6	7	8
1	2	3	4	5	6	7	8
9	10	11	12	13	14	15	16
17	18	19	20	21	22	23	24
25	26	27	28	29	30	31	32

TOWNSHIP DIAGRAM

6	5	4	3	2	1
6	5	4	3	2	1
7	8	9	10	11	12
13	14	15	16	17	18
19	20	21	22	23	24
25	26	27	28	29	30
31	32	33	34	35	36

SPECIAL SYMBOL LEGEND

Symbol	Description
[Symbol]	Route / Trail Marker
[Symbol]	Bureau of Land Management
[Symbol]	Forest Service
[Symbol]	National Park
[Symbol]	National Reservation
[Symbol]	County
[Symbol]	National Wild and Scenic Rivers
[Symbol]	Roads with Public Access

LAND STATUS LEGEND

Symbol	Description
[Symbol]	Public Lands Wilderness (Admin by BLM)
[Symbol]	National Forest Wilderness (Admin by USFS)
[Symbol]	National Wildlife Refuge Wilderness (Admin by USFWS)
[Symbol]	National Park Wilderness (Admin by NPS)
[Symbol]	Other Federal Lands (Admin by USNPS)
[Symbol]	Indian Land or Reservation (Admin by BIA)
[Symbol]	State Land (Admin by State)
[Symbol]	State, County, City, Wildlife, Park and Outdoor Recreation Area
[Symbol]	Private Land

RECREATION SITES, TRAILS AND AREAS LEGEND

Symbol	Description
[Symbol]	Group Campground
[Symbol]	Trail
[Symbol]	Interpretive
[Symbol]	Recreation Area
[Symbol]	Water Recreation Area
[Symbol]	Trail Shelter
[Symbol]	Water Control
[Symbol]	Range Station
[Symbol]	All Terrain Vehicle Trail

RECREATION SYMBOL LEGEND

Symbol	Description
[Symbol]	Horse Trail
[Symbol]	Off-Highway Vehicle Area
[Symbol]	Interpretive
[Symbol]	Recreation Area
[Symbol]	Water Recreation Area
[Symbol]	Trail Shelter
[Symbol]	Water Control
[Symbol]	Range Station
[Symbol]	All Terrain Vehicle Trail

SCALE 1:100,000

1 CENTIMETER ON THE MAP REPRESENTS 1 KILOMETER ON THE GROUND

1 INCH REPRESENTS 25,000 FEET

Scale	Centimeters	Meters	Feet
1:100,000	1	100,000	25,000

PUBLIC ACCESS: Public lands are open to public use unless otherwise restricted by a management plan. Private lands are not shown. All terrain vehicle trails are shown in red. Note: Roads partly revised 2017.