



Edited and published by the Bureau of Land Management National Operations Center in cooperation with the Bureau of Land Management Planning and Policy Division. Primary cartography by the Bureau of Land Management Planning and Policy Division. Revised information not field checked.

Public Land Survey System derived from the Bureau of Land Management Geographic Coordinate Data Base, Land Management Information System, and Geographic Information System. The map is based on the National Geodetic Survey 1983 datum. The map is based on the National Geodetic Survey 1983 datum. The map is based on the National Geodetic Survey 1983 datum.

Lambert Conformal Conic Projection
National Geodetic Survey, Vertical Datum of 1929

There may be private inholdings within the boundaries of the National or State Reservations shown on this map. Land lines are omitted in areas of extensive tract surveys.

THIS MAP COMPLETES WITH NATIONAL MAP AGENCY STANDARDS. THESE STANDARDS INCLUDE: DESIGN, PRINTING, AND COLOR. THESE STANDARDS INCLUDE: DESIGN, PRINTING, AND COLOR. THESE STANDARDS INCLUDE: DESIGN, PRINTING, AND COLOR.

FOR SALE BY
U.S. DEPARTMENT OF THE INTERIOR
BUREAU OF LAND MANAGEMENT
LAKENWOOD, CO 80215

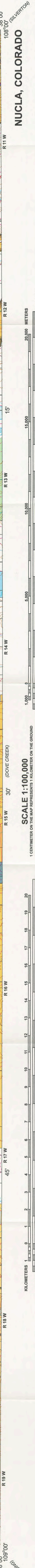
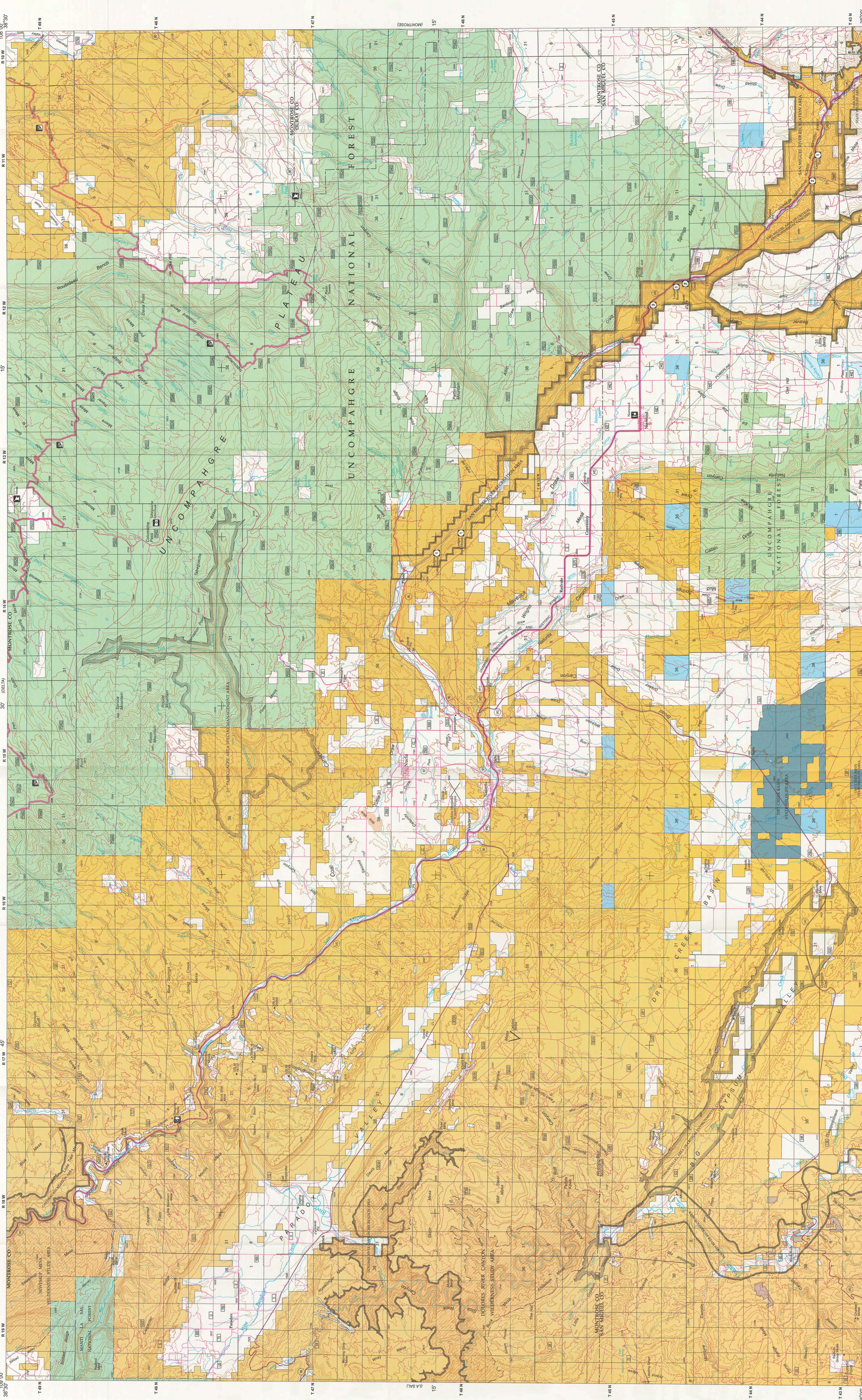
ISBN 978-1-4113-4211-5
9 781411 342115

CONTOUR INTERVAL 50 METERS

FEET	METERS
100	30
200	60
300	90
400	120
500	150
600	180
700	210
800	240
900	270
1000	300

TOPOGRAPHIC MAP SYMBOLS

Primary Highway, four-lane surface
Light duty, road or business surface
Heavy duty, road or business surface
4WD, rough boulder or fire-tracked surface
Trail (see peak, look, or in sketch)
Railroad, standard gauge, same gauge
Railroad, narrow gauge
Bridges, concrete, unpaved
Bridges, steel, unpaved
Aircraft landing field, landing strip
National boundary
State boundary
National or State reservation boundary
Land grant boundary
U.S. public lands survey, range, township, section
Range, township, section line, proposed
Range, township, section line, patented
Dam, dam with lock
Dam, dam with lock
Waterway, water with spring
Waterway, water with spring
Compass rose, true, US location monument
Run, off-feeding
Dissected surface, step, ridge, quarry, scarp
Contour interval change
Contour interval change
Stream, lake, perennial, intermittent
Stream, lake, perennial, intermittent
Stream, lake, perennial, intermittent
Stream, lake, perennial, intermittent
Special area boundary
Recreation area boundary
Recreation area boundary



RECREATION SITES, TRAILS AND AREAS LEGEND

- Compass rose
- Head Lands
- Restrooms
- Picnic Area
- Ranger Station
- Other Forest Service Facility
- Historic Area
- Mountain Bike Trail

RECREATION SITES, TRAILS AND AREAS LEGEND

- Compass rose
- Head Lands
- Restrooms
- Picnic Area
- Ranger Station
- Other Forest Service Facility
- Historic Area
- Mountain Bike Trail

LAND STATUS LEGEND

- Public Lands and Monuments (Admin by BLM)
- Public Lands Wilderness (Admin by BLM)
- Public Lands Wilderness Study Area (Admin by BLM)
- National Wildlife Refuge (Admin by USFWS)
- National Wildlife Refuge & Mgmt Areas (Admin by USFWS)
- National Park and Monuments (Admin by USFWS)
- Indian Land or Reservation (Admin by BIA)
- Bankhead-Jones Land Use Land (Admin by Acquiring Agency)
- Public Lands Wilderness (Admin by USFS)
- Coop Ray Wilson Road (CRWR) (Admin by USFS)
- Bureau of Reclamation Land (Admin by USBOR)
- State Land (Admin by State)
- Private Land (Admin by Title Agency)

INDEX TO 1:100,000-SCALE MAPS

1	2	3	4	5	6	7	8
9	10	11	12	13	14	15	16
17	18	19	20	21	22	23	24
25	26	27	28	29	30	31	32

INDEX TO 1:25,000-SCALE MAPS

17	Anderson Mesa
18	Aspen Creek
19	Naturalist
20	Aspen Creek
21	Shannon Point
22	Norwood Park
23	Norwood Park
24	Aspen Creek
25	Aspen Creek
26	Aspen Creek
27	Aspen Creek
28	Aspen Creek
29	Aspen Creek
30	Aspen Creek
31	Aspen Creek
32	Aspen Creek

TOPOGRAPHIC MAP SYMBOLS

Primary Highway, four-lane surface
Light duty, road or business surface
Heavy duty, road or business surface
4WD, rough boulder or fire-tracked surface
Trail (see peak, look, or in sketch)
Railroad, standard gauge, same gauge
Railroad, narrow gauge
Bridges, concrete, unpaved
Bridges, steel, unpaved
Aircraft landing field, landing strip
National boundary
State boundary
National or State reservation boundary
Land grant boundary
U.S. public lands survey, range, township, section
Range, township, section line, proposed
Range, township, section line, patented
Dam, dam with lock
Dam, dam with lock
Waterway, water with spring
Waterway, water with spring
Compass rose, true, US location monument
Run, off-feeding
Dissected surface, step, ridge, quarry, scarp
Contour interval change
Contour interval change
Stream, lake, perennial, intermittent
Stream, lake, perennial, intermittent
Stream, lake, perennial, intermittent
Stream, lake, perennial, intermittent
Special area boundary
Recreation area boundary
Recreation area boundary

SPECIAL SYMBOL LEGEND

- Route / Trail Marker
- Bureau of Land Management
- Forest Service
- National Park
- Indian Reservation
- County
- New Mexico and State Rivers
- Roads with Public Access

NOTE: Roads Party Revised 2017