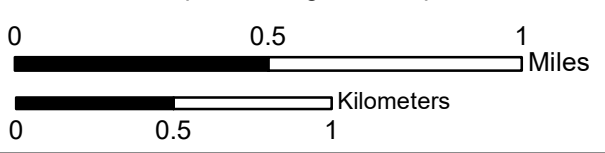


North American Datum 1983  
 Universal Transverse Mercator Zone 11 North  
 The portions of the wilderness boundary common with the Public Land Survey System (PLSS) were adjusted to the Nevada BLM Cadastral National Spatial Data Infrastructure (CadNSDI).

\*The Course Number Indicates the Beginning Point of the Course per the Legal Description Narrative.



- Boundary Change Point\*
- Monument with Wilderness Brass Cap\*
- - - Bureau of Land Management Wilderness Boundary
- Bureau of Land Management Wilderness
- U.S. Forest Service Wilderness
- Bureau of Land Management

U. S. Geological Survey, 7.5 minute quadrangle maps, (Nevada):  
 Mount Moriah Little Horse Canyon  
 Spring Mountain Mormon Jack Pass

## Mount Moriah Wilderness

White Pine County, Nevada

Bureau of Land Management, Ely District Office

Boundary of Wilderness Area as included in the National Wilderness Preservation System by the Nevada Wilderness Protection Act of 1989, Public Law 101-195, dated December 5, 1989 and incorporated into Public Law No. 109-432, dated December 20, 2006.

Map Completed May 4, 2022

No Warranty is made by the Bureau of Land Management as to the accuracy, reliability, or completeness of these data for individual use or aggregate use with other data.

