



Fantasy Canyon

Recreation Site

This map is geo-referenced
BLM Vernal Field Office
170 S. 500 E. Vernal, UT | 435-781-4400



Roads

- Federal/State Highway
- Improved Surface
- Route to Fantasy Canyon (Distance approx. 40 miles)
- Hike

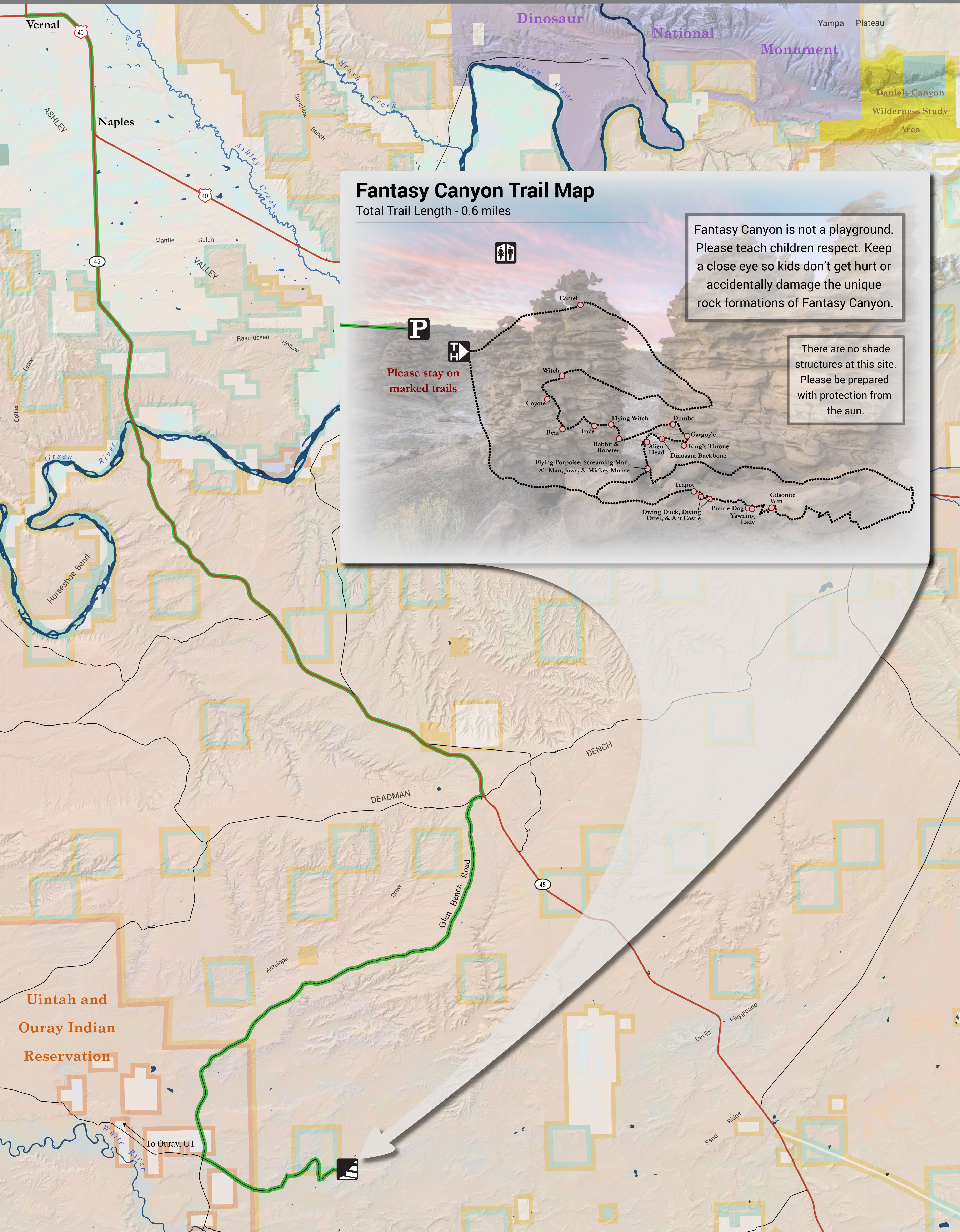
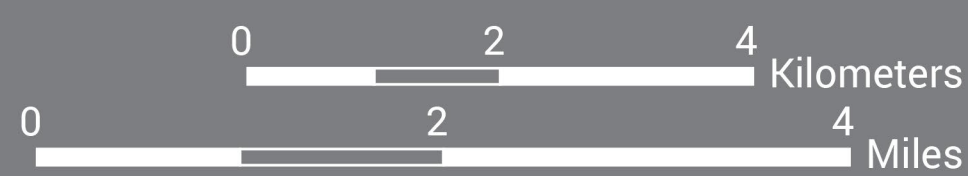
Land Status

- Bureau of Land Management (BLM)
- BLM Wilderness Study Area
- Private
- National Park Service
- State
- Indian Reservation

Visitor Information

- Scenic Geology
- Parking
- Restroom
- Trailhead
- Point of Interest

* DISCLAIMER: This information is provided as a courtesy only, no warranty, expressed or implied, is made as to the current validity of this information. Trail ratings are only intended to serve as general overviews of difficulty levels and may vary from the trail ratings in other areas you are familiar with. Weather events can quickly alter trail conditions and increase difficulty levels. Be prepared for changing conditions at all times. Unsecured, abandoned mines may be present near the trails for your safety, never enter abandoned mines. The BLM is not liable for any incidents arising from the use of the information presented here—each user is solely responsible for their own safety while enjoying their public lands. Produced February 2017.



Fantasy Canyon Trail Map

Total Trail Length - 0.6 miles

Please stay on marked trails

Fantasy Canyon is not a playground. Please teach children respect. Keep a close eye so kids don't get hurt or accidentally damage the unique rock formations of Fantasy Canyon.

There are no shade structures at this site. Please be prepared with protection from the sun.