



U.S. Department of the Interior
Bureau of Land Management

BLM Phoenix District Office Campground Fees Business Plan



September 2024

BLM Phoenix District Office Campgrounds and Day Use Fees Business Plan

[LVRDAZ___0000]

[LVRDAZ090000 Painted Rock]

Recommendations, Reviews, and Approvals

Recommended by:

, Field Manager, Hassayampa Field Office Date

, Field Manager, Lower Sonoran Field Office Date

Reviewed by:

Leon Thomas, District Manager, Phoenix District Office Date

Approved by:

Raymond Suazo, Arizona State Director Date

This business plan was prepared by the Bureau of Land Management’s Phoenix District Office pursuant to the Federal Lands Recreation Enhancement Act of 2004 (16 U.S.C. 6801-6814) and BLM recreation fee program policies. It establishes future management goals and priorities for the following campgrounds Painted Rock, Table Mesa, Boulders OHV Area, Emery Henderson and Estrella Wayside within the Phoenix District Office.



United States Department of the Interior

BUREAU OF LAND MANAGEMENT
Phoenix District Office
2020 E Bell Rd
Phoenix, AZ 85022



In Reply Refer to:
2932 (LLAZP0000)

Dear Reader,

I would like to present for your review and comment the Phoenix District Office Campgrounds Business Plan, which is managed by the Bureau of Land Management, Phoenix District Office. The district has one existing campground that charges a fee and four fee campgrounds planned to be constructed soon. Painted Rock Petroglyph Site and Campground is the existing site that currently collects a fee. The proposed campgrounds of Table Mesa, Boulders OHV Area, Emery Henderson, and Estrella Wayside are planned for construction in the next three to five years.

This business plan is proposing “expanded amenities fees” at all these campgrounds, which the BLM is authorized to collect if each site meets the requirements outlined in the Federal Lands and Recreation Enhancement Act (FLREA). Painted Rock Campground already meets the FLREA requirements, and the four proposed campgrounds will also be built to comply with these requirements. Additionally, per FLREA, the Interagency Senior and Access passes may provide a 50% discount on expanded amenity fees associated with individual campsites. This discount does not apply to group sites or dump station fees. The BLM retains and expends 100% of collected recreation fees for maintenance, improvements, and visitor services at the site or area in which the fees are collected.

The current fees at Painted Rock Site and Campground are a \$2 day use fee (standard amenity fee), and \$6 per individual campsite (expanded amenity fee), which combine to \$8 for overnight use. This business plan proposal will eliminate the \$2 day use fee and raise the \$6 per night camping fee to \$20 per night per individual campsite. Additionally, at all the proposed campgrounds in this plan, an expanded amenity fee of \$20 per night per campsite for all non-electric individual campsites and \$30 per night per campsite for all electric individual campsites will be introduced. The number of allowable vehicles per campsite will be set in the site-specific operations plans. Other expanded amenity fees being introduced include group campsite fees of \$50 per night, dump station fees of \$10 per use, and use of reservation services.

This business plan is available for a 45-day public comment period from September 6-October 21, 2024. Comments may be submitted by email to blm_az_pdo_recreation@blm.gov, in person at the Phoenix District Office, or via mail to BLM Phoenix District, Attn: Business Plan, 2020 E. Bell Road, Phoenix, AZ 85022.

Thank you for your interest in your public lands.

Sincerely,

Leon Thomas
District Manager

DRAFT

Table of Contents

1	Executive Summary.....	7
2	Background and Authorities.....	9
3	Introduction to the District Office Recreation Program	10
3.1	Resource Management Plans Phoenix District	10
3.2	District Recreational Visitation.....	11
3.3	Demographics of Recreational Users.....	11
3.4	Partnerships and Volunteer Programs	13
4	Description of Each Existing or Proposed Fee Site/Area.....	14
4.1	Existing Campgrounds	14
4.2	Proposed Campgrounds.....	15
5	Proposed Modifications to Recreation Fee Rates.....	20
5.1	America the Beautiful	21
5.2	E-Commerce.....	21
5.3	Model for Establishing Future Fee Changes	22
6	Operating Costs	22
7	Revenues.....	23
8	Priorities for Future Expenditures	24
9	Analysis of Recreation Fee Rates	24
9.1	Fair Market Value	24
9.2	Cost Recovery Fee Calculation Method.....	27
10	Impacts from Changing and Not-Changing Recreation Fee Rates	27
10.1	Anticipated Results of Not Establishing New Fees	30
10.2	Impacts of Fee Changes	30
11	Public Outreach.....	30
12	Appendices.....	32
13	References.....	33

Tables

Table 1: The Fee Schedule Developed for the Phoenix District Office Campgrounds 8

Table 2: Estimated Number of Visitors to Hassayampa Field Office, Fiscal Years 2019-2023 .. 11

Table 3: Estimated Number of Visitors to Lower Sonoran Field Office, Fiscal Years 2019-2023	11
Table 4: Tonto National Forest Annual Visitation Estimate	12
Table 5: Percent of National Forest Visits by Annual Household Income.....	13
Table 6: Percent of National Forest Visits by Distance Traveled.....	13
Table 7: Annual Overnight Visitation at Painted Rock Petroglyph Site and Campground.....	14
Table 8: The Current and Proposed Fee Schedule for the Phoenix District Office Campgrounds	21
Table 9: Annual Operating Costs for Painted Rock Campground (Existing).....	22
Table 10: Projected Operating Costs for Proposed Campgrounds (Table Mesa, Boulders OHV Area, Emery Henderson, Estrella Wayside)	23
Table 11: Annual Revenue for Painted Rock Campground.....	23
Table 12: Future Projected Revenue (Average Per Campground) With New Fees in Place.....	24
Table 13: Future Expenditures and Cost Estimate.....	24
Table 14: Comparability Analysis of Nearby Similar Fee Sites.....	25
Table 15: Reference Area - Environmental Justice Considerations	28
Table 16: Analysis Area - Environmental Justice Considerations.....	29

Figures

Figure 1: Facilities at Painted Rock Campground	15
Figure 2: Conceptual design for Table Mesa Campground	17
Figure 3: Map Showing Location of Hassayampa Field Office Campgrounds.....	18
Figure 4: Map Showing Location of Lower Sonoran Field Office Campgrounds	19

1 Executive Summary

This business plan was prepared by the Bureau of Land Management's (BLM) Phoenix District Office (PDO) in accordance with the Federal Lands Recreation Enhancement Act (FLREA) of 2004 (P.L. 108-447, as amended) and BLM recreation program policy and manual direction regarding the administration of fee sites (BLM Manual 2930). FLREA provides the BLM current authority to establish, modify, charge, and collect recreation fees at federal recreational lands and waters. FLREA states that an expanded amenity fee may be collected if the developed campground provides at least five of the following nine services: tent or trailer spaces, picnic tables, drinking water, access roads, the collection of the fee by an employee or agent of the Federal land management agency, reasonable visitor protection, refuse containers, toilet facilities, and simple devices for containing a campfire. Per FLREA the Interagency Senior and Access passes may provide a 50% discount on expanded amenity fees associated with individual campsites. This discount does not apply to group sites or dump station fees. FLREA (16 United States Code (U.S.C.) 6802(b)(1)) does not grant the authority for BLM to provide discounts or reduced recreation fees for local residents or other special groups.

For the Painted Rock Petroglyph Site and Campground, this business plan will replace the existing plan (dated September 2005) in its entirety. This plan includes an increase in the amount of the established expanded amenity fee (16 U.S.C. 6802(g)(2)(A)(D)) for overnight camping, and the removal of the current \$2.00 day use standard amenity fee (16 U.S.C. 6802(f)).

For the campgrounds of Table Mesa, Boulders OHV Area, Emery Henderson, and Estrella Wayside, this business plan proposes to establish expanded amenity fees for non-electric and electric individual campsites (16 U.S.C. 6802(g)(2)(A)(D)) at these planned sites. All sites listed would be built to satisfy the requirements of FLREA as expanded amenity fee areas.

The proposed expanded amenity fees for PDO's campgrounds are:

- Individual non-electric campsites of \$20 (16 U.S.C. 6802(g)(2)(A))
- Individual electric hookup campsites of \$30 (16 U.S.C. 6802(g)(2)(A)(D))
- Group campsites of \$50 per night (16 U.S.C. 6802(g)(2)(A))
- Dump station fees of \$10 per use (16 U.S.C. 6802(g)(E))
- Reservation services (16 U.S.C. 6802(g)(2)(G)). Reservation services fees could range from \$.50 to \$10.00 depending on the type of service provided.

To account for inflation, the PDO is also proposing to adopt a model to increase fees by 20% (then rounded to the nearest half dollar) whenever the Consumer Price Index (CPI-U), US City Average, All Items, 1982-84=100, not seasonally adjusted, rises by 20%.

Table 1 summarizes the existing and proposed fee schedule.

Table 1: The Fee Schedule Developed for the Phoenix District Office Campgrounds

Fee Areas	Current Fees	Proposed Fees (Expanded Amenity)
Painted Rock Petroglyph Site and Campground	\$6 camping (expanded amenity) \$2 day use (standard amenity) Both fees combine for \$8 overnight use	Individual Site (non-electric) per night: \$20 Individual Site (electric) per night: \$30 Senior and Access Pass holders: 50% off individual campsites Group site per night: \$50 Dump station fee: \$10 Remove \$2 day-use fee for Painted Rock
Proposed Table Mesa, Boulders OHV Area, Emery Henderson, and Estrella Wayside Campgrounds	None; these campsites are proposed to be built in the future.	Individual Site (non-electric) per night: \$20 Individual Site (electric) per night: \$30 Senior and Access Pass holders: 50% off individual campsites Group site per night: \$50 Dump station fee: \$10

Upon extensive review, the \$2.00 standard amenity fee associated with the Painted Rock Petroglyph Site is recommended to be discontinued. The day use site does not fulfill the requirements established under the FLREA for a standard amenity recreation fee. Its amenities comprise of two shaded picnic areas and interpretive signage. The site lacks essential infrastructure, including permanent restrooms and waste management facilities, which visitors to the site must use instead at the neighboring campground. Additionally, it has low visitation and usage. Therefore, the PDO has determined the site does not necessitate significant expenditure on operations and improvements and recommends the removal of the \$2.00 standard amenity fee from the fee program.

The proposed fee increase for individual campsites at the Painted Rock Campground, and the introduction of fees to the four proposed campgrounds will follow the guidelines established by FLREA. Fees would not be charged at the proposed campgrounds until completion of environmental reviews and site improvements for expanded amenities as required by FLREA. Fee revenue would be used to fund maintenance, enhance visitor services, and sustain natural resources. Fees would support the upkeep of campgrounds, trails, and amenities such as toilets and picnic areas, improving the overall visitor experience and safety. By complying with FLREA guidelines, the BLM ensures responsible management of recreation sites, fosters public-private partnerships for enhanced facilities, and contributes to the conservation and restoration of public lands.

Currently fees collected at the Painted Rock Campground are used for campsite maintenance, trash collection, vault toilet maintenance, kiosk upkeep, site monitoring and road maintenance. The PDO will use the expanded amenity fee revenue to increase staffing in maintenance, park rangers, and law enforcement while also bringing in volunteers to serve as campground hosts. Revenue would also fund improvements to the existing campsites, campground amenities and signage.

The PDO conducted market analysis to develop the fee proposal. The proposed \$20 fee for an individual (non-electric) site is comparable to a variety of other federal, state, and county campgrounds near the Phoenix District Office that offer similar amenities. Market analysis identified these sites charge between \$15 to \$29 per night. PDO anticipates that electric campsites will be attractive to campers. Presently, there are limited options for individual electric

campsites in the area; only the Emery Henderson Campground has electric hookups nearby. The proposed group site price of \$50 is comparable to the price of the Tonto National Forest's smaller group sites, which range from \$50-\$175, and is the same price charged at Organ Pipe Cactus National Monument (\$50). A fee of \$10 per dump station use is being proposed for all users since the current and future sites do not have entrance control, which could create difficulty separating paying campers and the general public.

2 Background and Authorities

This business plan has been prepared to meet the criteria defined in the Federal Lands Recreation Enhancement Act of 2004 (Public Law 108-447; Title VIII, Section 801; 16 U.S.C. 6801–6814). The authorities and regulations for this business plan are:

- **The Federal Land Policy and Management Act (FLPMA) of 1976** (Public Law 94-579; 43 U.S.C. 1701–1787), contains BLM's general land use management authority over the public lands, and establishes outdoor recreation as one of the principal uses of those lands. Section 302 (b) of FLPMA directs the Secretary of the Interior to regulate through permits or other instruments the use of the public lands. Section 303 of FLPMA contains BLM's authority to enforce the regulations and impose penalties.
- **The Federal Lands Recreation Enhancement Act (FLREA) of 2004** repealed applicable portions of the Land and Water Conservation Fund Act and replaced BLM's authority to collect recreation fees. This current law authorizes BLM to collect recreation fees at sites that meet certain requirements, allows BLM to keep the fee revenues at the local offices where they were collected, and directs how BLM will manage and utilize these revenues. FLREA also established the America the Beautiful – The National Parks and Federal Recreational Pass Program. FLREA (16 U.S.C. 6802(b)(1)) does not grant the authority for BLM to provide discounts or reduced recreation fees for local residents or other groups.
- **Title 43 Code of Federal Regulations, Part 2930 (43 CFR 2930) Permits for Recreation on Public Lands** contains the regulations governing BLM's recreation permitting program.

This business plan has also been prepared pursuant to all applicable BLM recreation fee program policies and guidance, including:

- BLM Manual 2930, *Recreation Permits and Fees*, Rel. 2-296 dated October 22, 2007
- BLM Handbook 2930-1, *Recreation Permit and Fee Administration Handbook*, Rel. 2-300 dated November 17, 2014

The BLM strives to manage recreation and visitor services to serve the diverse visitor outdoor recreation demands while helping to maintain sustainable setting conditions needed to conserve the public lands, so the visitors' desired recreation choices remain available. The BLM's goals for delivering recreation benefits from BLM-administered lands and waters to the American people and their communities are to:

- Improve access to appropriate recreation opportunities,
- Ensure a quality experience and enjoyment of natural and cultural resources, and

- Provide for and receive fair value in recreation.

3 Introduction to the District Office Recreation Program

District Office: BLM Phoenix District (PDO)

Field Offices:

- **Hassayampa Field Office** – Table Mesa Campground, Boulders OHV Area and Campground, Emery Henderson Campground
- **Lower Sonoran Field Office** – Painted Rock Campground, Estrella Wayside Campground

Counties:

- **Maricopa County:** Painted Rock Campground, Table Mesa Campground, Boulders OHV Area and Campground, Emery Henderson Campground, Estrella Wayside Campground

Congressional Districts:

- **AZ-07:** Painted Rock Campground, Estrella Wayside Campground
- **AZ-08:** Table Mesa Campground, Emery Henderson Campground
- **AZ-09:** Boulders OHV Area and Campground

Phoenix District Office includes 3.1 million acres of land in Arizona divided into two field offices: Hassayampa Field Office with 1.7 million acres and Lower Sonoran Field Office with 1.4 million acres. The recreation programs on this land include four recreational shooting sports sites, a large network of multi-use trails from hiking and equestrian to OHV and mountain biking, dispersed camping, dispersed recreational shooting, a robust Special Recreation Permit program from off-road racing and tours to endurance running and riding, competitive events, and research trips. Features encompassed in the PDO include the Harquahala Mountains Backcountry Byway, Big Horn Mountains, 11 Wilderness areas, Table Mesa Recreation Area, the Black Canyon National Recreation Trail, Juan Bautista de Anza and Butterfield Overland National Historic Trails.

The Phoenix District Office manages two national monuments: Agua Fria National Monument and Sonoran Desert National Monument. Nearby public lands that border the district include Tonto and Prescott National Forests, Arizona State Lands, and Maricopa County Parks.

3.1 Resource Management Plans Phoenix District

Hassayampa Field Office

Bradshaw-Harquahala Record of Decision & Approved Resource Management Plan

Lower Sonoran Field Office

Lower Sonoran Record of Decision & Approved Resource Management Plan

3.2 District Recreational Visitation

The 2019-2023 Recreation Management Information System (RMIS) data of the Hassayampa Field Office shows that overall visitation numbers have a consistent year to year increase in that five-year span with a total increase of 51 percent from 2019 to 2023 (Table 2).

Table 2: Estimated Number of Visitors to Hassayampa Field Office, Fiscal Years 2019-2023

Fiscal Year	Hassayampa Field Office Estimated Number of Visitors
FY 2019	473,851
FY 2020	524,457
FY 2021	600,788
FY 2022	656,400
FY 2023	714,824

From the five-year RMIS data of the Lower Sonoran Field Office's overall visitation, there is a noticeable decrease from FY2019 to FY2020 most likely tied to the COVID 19 pandemic. After this period, there is a steady yearly increase of visitation numbers to reach an even higher total in FY2023 compared to the pre-COVID 19 year (Table 3).

Table 3: Estimated Number of Visitors to Lower Sonoran Field Office, Fiscal Years 2019-2023

Fiscal Year	Lower Sonoran Field Office Estimated Number of Visitors
FY 2019	115,988
FY 2020	107,598
FY 2021	104,353
FY 2022	110,806
FY 2023	124,458

The statistics in the tables above show that with the Lower Sonoran Field Office's visitation recovery after the COVID-19 pandemic and the consistent increase of visitors at the Hassayampa Field Office over the past five years provide a reasonable basis for considering fee increases or additions. These adjustments would aim to align with FLREA's objectives of enhancing visitor experiences and ensuring sustainable funding for site management and improvements. This includes improving amenities such as restrooms, trails, interpretive signage, and visitor centers to enhance visitor experiences.

3.3 Demographics of Recreational Users

Nearby relevant data from the Tonto National Forest has been used since the Phoenix District Office currently does not collect recreation demographic information. Site use demographics information will be collected for the campgrounds in the future.

The following information and graphics for this section are from the National Visitor Use Monitoring data collected FY 2016 for the Tonto National Forest. The data from the USFS tables show total visitation numbers including annual visitation totals (Table 4), visitor origin (Table 5) and visitor income level (Table 6). Tonto National Forest is the closest federal land management agency to the Phoenix District Office, even bordering each other in many areas. The national forest campgrounds share similarities to the ones in the Phoenix District Office including natural

environments, amenities, and close proximity to the Phoenix Metro Area. With these similarities for the campgrounds, each will share similar user groups. The Forest Service derived this information from surveys of visitors leaving the Tonto National Forest on random locations and days over a period of one year. For more details on the methodology, please refer to [A Review of the Forest Service’s National Visitor Use Monitoring \(NVUM\) Program](#) (2020).

Table 4 shows the annual visitation estimate for use of developed campsites at Tonto National Forest totaling 366,000 visits. The popularity of this activity shows the recreating public’s desire for this type of recreation opportunity. This aligns with Phoenix District Office’s goals of creating more of these types of opportunities with construction of fee-based developed campgrounds and the increase in campground fees to improve visitor experience and amenities.

Table 4: Tonto National Forest Annual Visitation Estimate

Visit Type	Visits (1,000s)	90% Confidence Level (%) #
Total Estimated Site Visits*	3,044	±18.9
→ Day Use Developed Site Visits	1,182	±32.4
→ Overnight Use Developed Site Visits	366	±63.5
→ General Forest Area Visits	1,327	±27.2
→ Designated Wilderness Visits†	169	±13.7
Total Estimated National Forest Visits§	2,580	±19.0
→ Special Events and Organized Camp Use‡	0	±0.0

* A Site Visit is the entry of one person onto a National Forest site or area to participate in recreation activities for an unspecified period of time.

† Designated Wilderness visits are included in the Site Visits estimate.

‡ Special events and organizational camp use are not included in the Site Visit estimate, only in the National Forest Visits estimate. Forests reported the total number of participants and observers, so this number is not estimated; it is treated as 100% accurate.

§ A National Forest Visit is defined as the entry of one person upon a national forest to participate in recreation activities for an unspecified period of time. A National Forest Visit can be composed of multiple Site Visits.

This value defines the upper and lower bounds of the visitation estimate at the 90% confidence level, for example if the visitation estimate is 100 +/-5%, one would say “at the 90% confidence level visitation is between 95 and 105 visits.”

Table 5 shows the annual household income of Tonto National Forest visitors. With an extensive range of income levels for local recreation visitors the Phoenix District Office strives to offer a diverse range of recreation opportunities. Along with the many dispersed camping areas throughout the 3.1-million-acre district office, developed campground construction and fee increases would help the BLM provide these desired opportunities.

Table 5: Percent of National Forest¹ Visits by Annual Household Income

Annual Household Income Category	National Forest Visits (%)
Under \$25,000	8.1
\$25,000 to \$49,999	17.2
\$50,000 to \$74,999	23.0
\$75,000 to \$99,999	15.6
\$100,000 to \$149,999	17.8
\$150,000 and up	18.2
Total	99.9

Table 6 below shows the distance traveled for Tonto National Forest visitors. Close to 75 percent of the respondents to the survey visit from less than 50 miles away, indicating a great majority of recreation users are local. The Phoenix Metropolitan Area is one of the largest in the southwest and growing at a fast rate providing a large nearby user base. Also, outdoor recreation continues to be growing in popularity as evidenced by the visitation numbers at the Phoenix District Office shown in (Table 2 and 3.) With this increase in overall population and recreational visitors the Phoenix District Office is positioning itself to provide more facilities, accommodations and services for the public.

Table 6: Percent of National Forest Visits by Distance Traveled

Miles from Survey Respondent's Home to Interview Location (Travel Distance is Self-Reported)	National Forest Visits (%)
0 - 25 miles	42.4
26 - 50 miles	31.8
51 - 75 miles	9.1
76 - 100 miles	4.4
101 - 200 miles	5.5
201 - 500 miles	2.0
Over 500 miles	4.7
Total	99.9

3.4 Partnerships and Volunteer Programs

A volunteer program through the BLM is in place for campground site hosts in Arizona. Currently there are unfilled slots for 4 volunteer site hosts at Painted Rock Campground and Emery Henderson Day Use Area. These positions are vital to assist with on the ground

¹ National Forest Visits are defined as the entry of one person upon a national forest to participate in recreation activities for an unspecified period of time. A National Forest Visit can be composed of multiple Site Visits.

management and increase the visitor experience. On average each host contributes approximately 500 volunteer hours/year with an estimated value of approximately \$16,745.

Implementing this business plan would allow PDO to invest more resources into its campgrounds, making these positions more desirable, and would enable PDO to add site host positions at all the proposed campgrounds. It is anticipated that this would assist PDO in achieving a major focus of the recreation department to strengthen partnerships with the local communities and organizations because the new campgrounds would provide an additional avenue to increase outreach and engagement with these organizations.

4 Description of Each Existing or Proposed Fee Site/Area

4.1 Existing Campgrounds

Painted Rock Petroglyph Site and Campground: This campground is located 20 miles west of the community of Gila Bend and 12 miles north of Interstate 8. It is an approximately 300-acre area operated as a day-use archaeological attraction and an expanded fee site campground mainly used for winter camping. The campground has 60 designated campsites with 2 group site areas. Visitors experience RV and primitive camping, social gathering, petroglyph and historical trail viewing, interpretive exhibit viewing, picnicking, hiking, and motorized exploring adjacent to natural landscapes. Campground amenities include vault toilets, steel fire rings, trash collection, picnic tables, shade structures, tent and trailer spaces, maintained access roads and regular patrols by law enforcement and park rangers. These amenities meet and exceed the requirements put forth by FLREA, 16 U.S.C. 6802(g)(2)(A), stating expanded amenity fee sites will include at least 5 of the 9 criteria of tent or trailer spaces, picnic tables, drinking water, access roads, the collection of the fee by an employee or agent of the Federal land management agency, reasonable visitor protection, refuse containers, toilet facilities, and simple devices for containing a campfire. Future amenities, such as an RV dump station and electric hookups, may or may not be constructed.

Current fees for overnight use are \$8 per night which include \$6 for the expanded amenity individual campsite camping fee plus the \$2 day use standard amenity fee. Prior to the enactment of FLREA, the campground was designated a “recreation fee demonstration site” through the Recreation Fee Demo program, and fee collection began in October 1999. The campground site is next to an additional 9,500 acres of BLM land, which provide opportunities for wildlife viewing and pleasant Sonoran Desert scenery. The campground receives an average of 25,000 visitors per year (Table 7). Visitation is calculated by traffic counters into the campground and petroglyph site.

Table 7: Annual Overnight Visitation at Painted Rock Petroglyph Site and Campground

<u>Visitation by year</u>	<u>Number of Visits</u>
FY 2019	28,137
FY 2020	17,575
FY 2021	25,591
FY 2022	27,536
FY 2023	27,277



Figure 1: Facilities at Painted Rock Campground

4.2 Proposed Campgrounds

The following campgrounds are expected to be developed across the district over the next 3-5 years. Additional NEPA analysis, design, and construction will take place as staffing and funding allow. Proposed amenities in the descriptions section may or may not be constructed. However, each location will include at least 5 of the 9 criteria for developed campgrounds required by FLREA, 16 U.S.C. 6802(g)(2)(A): tent or trailer spaces, picnic tables, drinking water, access roads, the collection of the fee by an employee or agent of the federal land management agency, reasonable visitor protection, refuse containers, toilet facilities, and simple devices for containing a campfire. Additionally, the campgrounds may include expanded amenity group campsites (16 U.S.C. 6802(g)(2)(A)), electric hookups (16 U.S.C. 6802(g)(2)(D)), and dump stations (16 U.S.C. 6802(g)(E)). Once the proposed campgrounds reach the minimum qualifications for FLREA, PDO would begin to charge fees for their use.

Table Mesa Campground: The Table Mesa Campground will be located in the Table Mesa Recreation Area north of Phoenix on the west side of Interstate 17 at the Table Mesa Road exit and will have both developed and primitive camping opportunities. Within this campground only developed sites that meet FLREA's expanded amenity criteria would have fees instituted. The developed campground will be approximately 16 acres and have 20-30 designated campsites. The dispersed/primitive camping area will be approximately 48 acres. Expanded amenities may include group campsites, concrete or gravel RV pads, tent pads, designated sites accommodating class A,B,C motorized RV's and travel trailers, picnic tables, fire rings, ADA accessible vault toilet facilities, ramadas, trash collection, RV dump station, electric hookups, and a disc golf course. Currently the site has very little development. Figure 2 shows the conceptual design for Table Mesa Campground.

Boulders OHV Area and Campground: The Boulders OHV Campground will be located on approximately 25 acres of BLM land on the north side of State Route 74 at mile marker 11.5. The campground will have between 30-50 designated campsites with both developed and primitive camping opportunities. Within this campground only developed sites that meet FLREA's expanded amenity criteria would have fees instituted. Amenities may include group campsites, concrete or gravel pads, tent pads, designated sites accommodating class A,B,C motorized RVs and travel trailers, picnic tables, fire rings, ADA accessible vault toilet facilities, ramadas, trash collection, RV dump station, and electric hookups. Currently the site is a moderately sized staging area for OHV trail access, has vault toilets, and is a popular site for dispersed camping.

Emery Henderson Campground: The Emery Henderson Campground will be located north of Phoenix off of New River Road, will be approximately 7 acres, and will have developed camping opportunities according to FLREA's expanded amenity criteria. The campground will have 10-20 designated campsites. Amenities may include group campsites, concrete or gravel RV pads, tent pads, designated sites accommodating class A,B,C motorized RV's and travel trailers, picnic tables, fire rings, ADA accessible vault toilet facilities, ramadas, trash collection, RV dump station, and electric hookups. Currently the site is a developed trailhead for the Black Canyon National Recreation Trail and has vault toilets, ramadas, picnic tables, host sites and a paved parking lot.

Estrella Wayside Campground: The Estrella Wayside Campground will be located east of Gila Bend off Maricopa County Road 238 and will include both a developed and primitive campground. Within this campground only developed campsites that meet FLREA's expanded amenity criteria would have fees instituted. Amenities may include group campsites, concrete or gravel RV pads, tent pads, designated campsites for small-sized camper vans, picnic tables, fire rings, ADA accessible vault toilet facilities, ramadas, trash collection, RV dump station, and electric hookups. Currently the site has little development with just a kiosk display and a gravel parking area.

Figures 3 and 4 show the locations of the proposed campground areas and the current Painted Rock Campground.

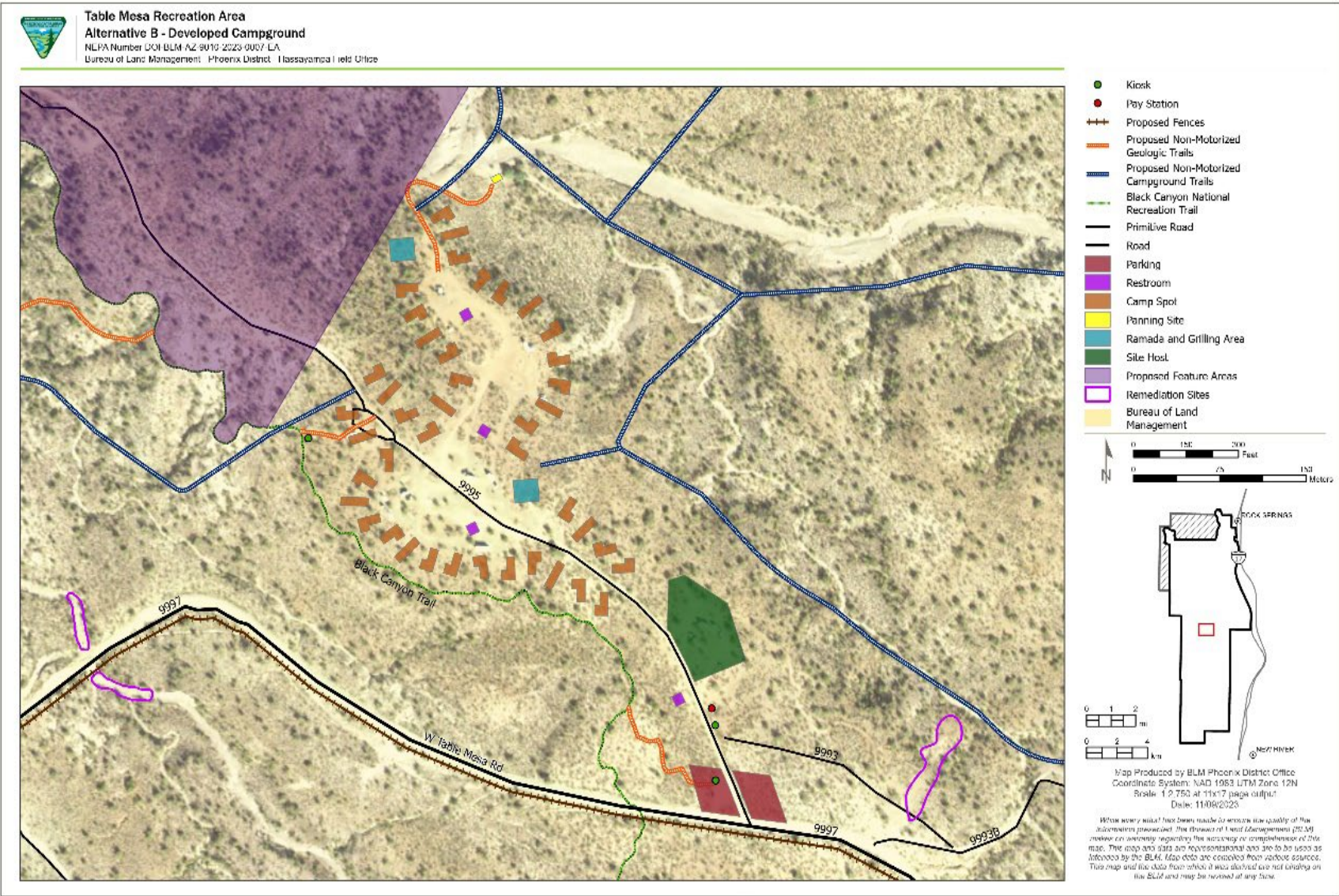


Figure 2: Conceptual design for Table Mesa Campground

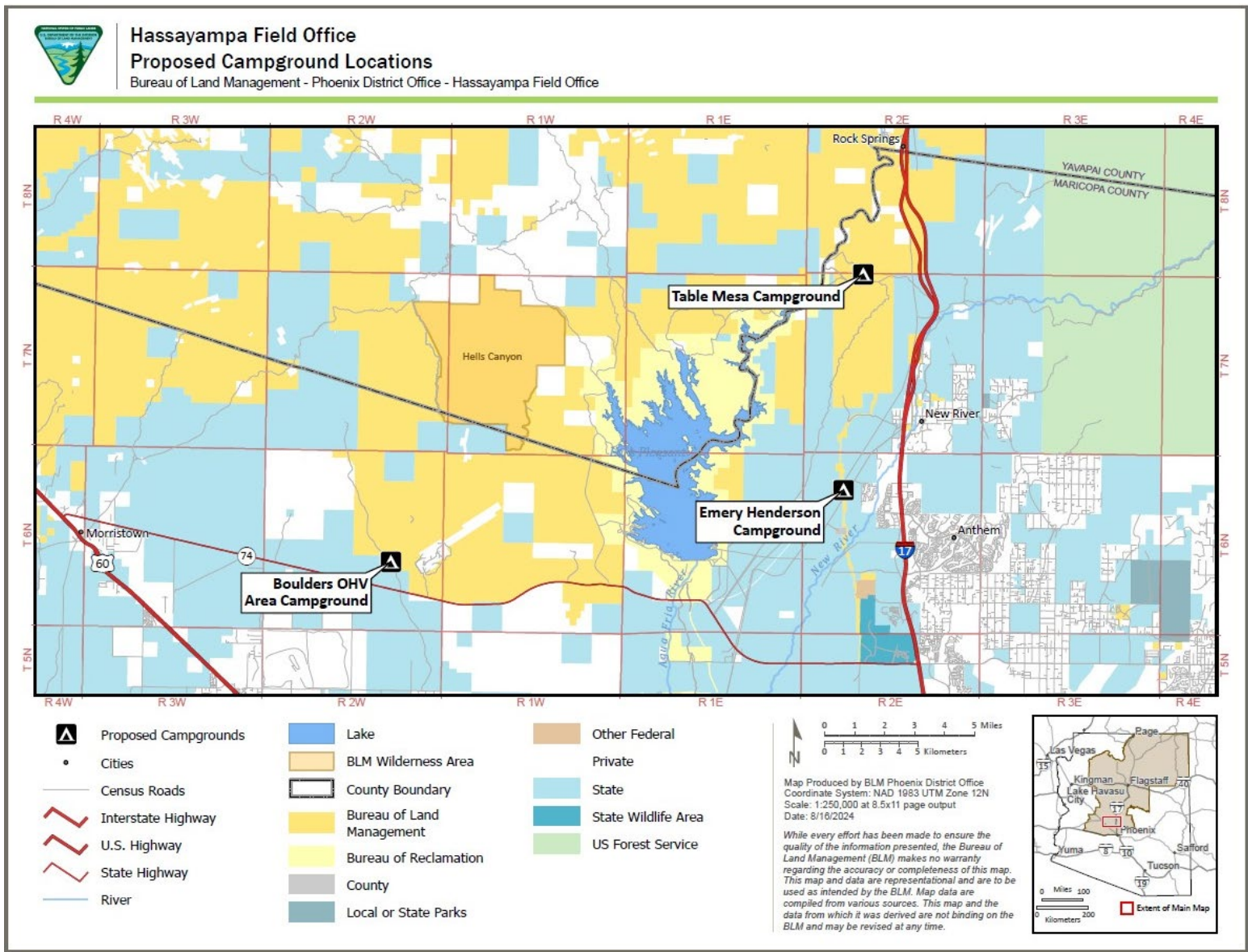


Figure 3: Map Showing Location of Hassayampa Field Office Campgrounds

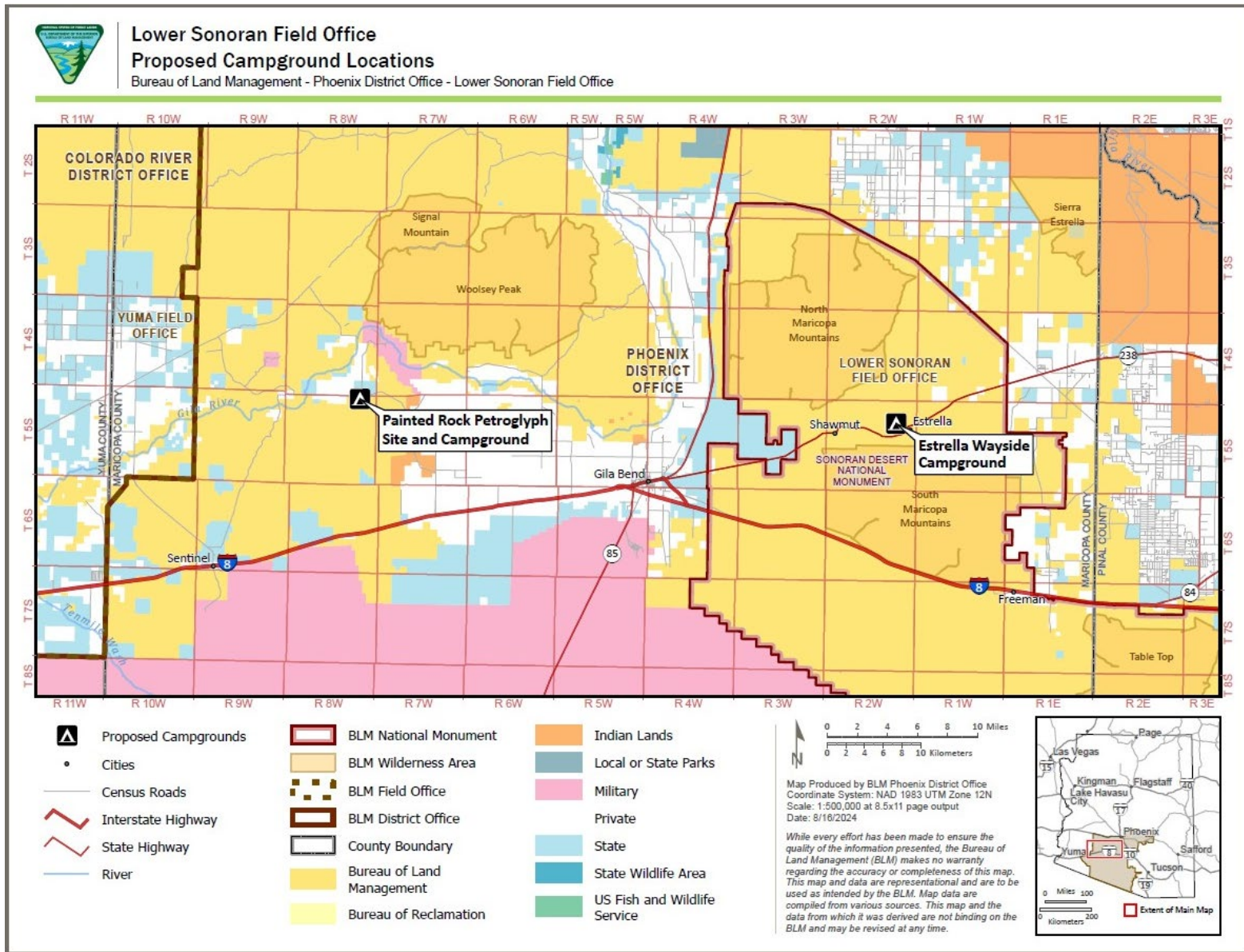


Figure 4: Map Showing Location of Lower Sonoran Field Office Campgrounds

5 Proposed Modifications to Recreation Fee Rates

This business plan is proposing expanded amenities fees at its existing and future campgrounds described in Section 4, which the BLM is authorized to collect if each site meets the requirements outlined in the Federal Lands and Recreation Enhancement Act (FLREA). FLREA states that an expanded amenity fee may be collected if the developed campground provides at least five of the following nine services: tent or trailer spaces, picnic tables, drinking water, access roads, the collection of the fee by an employee or agent of the Federal land management agency, reasonable visitor protection, refuse containers, toilet facilities, and simple devices for containing a campfire. Per FLREA the Interagency Senior and Access passes may provide a 50% discount on expanded amenity fees associated with individual campsites. This discount does not apply to group sites or dump station fees. FLREA (16 United States Code 6802(b)(1)) does not grant the authority for BLM to provide discounts or reduced recreation fees for local residents or other special groups. The BLM retains and expends 100% of collected recreation fees for maintenance, improvements and visitor services at the site or area in which they are collected.

Painted Rock Petroglyph Site and Campground already meets the FLREA expanded amenity requirements. This business plan will replace the existing 2005 plan for Painted Rock in its entirety. The site's current fees are \$6 per night per individual site (expanded amenity) and a \$2 day use fee (standard amenity), for a total overnight fee of \$8. This plan includes an increase in the amount of the established expanded amenity fee (16 U.S.C. 6802(g)(2)(A)(D)) for overnight camping, as described in the following fee summary table, and the removal of the current \$2.00 day use standard amenity fee (16 U.S.C. 6802(f)).

For the campgrounds of Table Mesa, Boulders OHV Area, Emery Henderson, and Estrella Wayside, this business plan proposes to establish expanded amenity fees for non-electric and electric individual campsites (16 U.S.C. 6802(g)(2)(A)(D)). All sites listed would be built to satisfy the expanded amenity fee requirements of FLREA. The number of allowable vehicles per site would be set in the site-specific operations plans.

The proposed expanded amenity fees for PDO's campgrounds are:

- Individual non-electric campsites of \$20 (16 U.S.C. 6802(g)(2)(A))
- Individual electric hookup campsites of \$30 (16 U.S.C. 6802(g)(2)(A)(D))
- Group campsites of \$50 per night (16 U.S.C. 6802(g)(2)(A))
- Dump station fees of \$10 per use (16 U.S.C. 6802(g)(E))
- Reservation services (16 U.S.C. 6802(g)(2)(G)). Reservation services fees could range from \$.50 to \$10.00 depending on the type of service provided.

Table 8 summarizes the existing and proposed fee schedule for PDO's campgrounds.

Table 8: The Current and Proposed Fee Schedule for the Phoenix District Office Campgrounds

Fee Areas	Current Fees	Proposed Fees (Expanded Amenity)
Painted Rock Petroglyph Site and Campground	\$6 camping (expanded amenity) \$2 day use (standard amenity) Both fees combine for \$8 overnight use.	Individual Site (non-electric) per night: \$20 Individual Site (electric) per night: \$30 Senior and Access Pass holders: 50% off individual campsites Group site per night: \$50 Dump station fee: \$10 Remove \$2 day-use fee for Painted Rock
Proposed Table Mesa, Boulders OHV Area, Emery Henderson, and Estrella Wayside Campgrounds	None; these campsites are proposed to be built in the future.	Individual Site (non-electric) per night: \$20 Individual Site (electric) per night: \$30 Senior and Access Pass holders: 50% off individual campsites Group Site per night: \$50 Dump station fee: \$10

5.1 America the Beautiful

FLREA established an interagency national pass known as the America the Beautiful – The National Parks and Federal Recreational Lands Pass. There are six types of America the Beautiful (ATB) passes: Annual, Military, Every Kid Outdoors (EKO, 4th grade), Senior, Access, and Volunteer. While the America the Beautiful Annual, Military, EKO, and Volunteer passes are accepted at BLM fee sites that charge a standard amenity fee, these passes are not eligible for expanded amenity fees, such as the PDO Campgrounds. Only the Interagency Senior and Access passes apply to expanded amenity fees.

Interagency Senior Pass or Interagency Access Pass holders will receive a 50% discount on the expanded amenity fee for overnight individual campsites. The discount only applies to the fee for the campsite physically occupied by the Senior Pass or Access Pass holder, not to any additional campsite(s) occupied by members of the pass holder’s party. This discount does not apply to group sites or dump station fees.

5.2 E-Commerce

Phoenix District Office will use various e-commerce technologies as directed in E-Commerce Technologies for Recreation Fee Collections and Reservation Services (BLM Instruction Memorandum 2022-010), to provide recreation visitors opportunities to find, reserve and pay for campsites and day use within the field office. Most of these options are provided through the interagency reservation service Recreation.gov. Painted Rock Petroglyph Site and Campground already uses this reservation technology. It is anticipated that the additional expanded amenity campgrounds will also use similar e-commerce technology.

An expanded amenity fee for reservation services would be charged at the PDO Campgrounds in addition to any other expanded amenity fees in accordance with 16 U.S.C. 6802(g)(2)(G). Reservation services fees could range from \$0.50 to \$10.00 depending on the type of service provided. The reservation service is subject to contracting requirements and will be adjusted with contract changes or with future updates to the business plan. For visitors who wish not to pay the expanded amenity fee of reservation services, the district office will attempt to continue to provide a blend of reservation and first –come, first-served options until or unless the office moves the fee site/area entirely to e-commerce. Other payment options may also be considered in

the future as technology and software develops, such as onsite credit card payment systems or scan and pay.

5.3 Model for Establishing Future Fee Changes

BLM’s permit and fee policy recommends the use of an index for routine fee adjustments rather than reviewing each individual adjustment through a comprehensive business plan effort that requires a tremendous investment of effort and time. The Phoenix District Office seeks approval to adopt a model to increase fees by 20% (then rounded) whenever the “CPI-U, US City Average, All Items, 1982-84=100, not seasonally adjusted, annual average” rises by 20%. According to the Bureau of Labor Statistics (BLS,) the Consumer Price Index (CPI) is “a measure of the average change over time in the price paid by urban consumers for a market basket of consumer goods and services” (bls.gov/cpi). The CPI-U is the broadest and most comprehensive CPI. The all-urban consumer group included in the CPI-U represents over 90 percent of the total U.S. population (https://www.bls.gov/cpi/questions-and-answers.htm). The first adjustment would result in an increase of 20% of all proposed fees in this business plan. This model would ensure the Phoenix District Office campgrounds evolve in tandem with the ever-changing environment of the future and increasing costs.

Painted Rock Campground is the only existing campground fee site. Its last business plan was signed in 2005. This date will be used to provide an example of the CPI change over time. In 2005, the average annual Consumer Price Index for All Urban Consumers (CPI-U) was at 196.8; by 2023 it had climbed to 304.702, an increase of 55%. According to the [CPI Inflation Calculator](#), \$10 in January 2005 had the same buying power as \$14.17 in January 2023. The BLM is seeking approval to exercise the option to increase the camping fee by 20%, rounded up to the nearest half dollar, when there is a 20% increase in the CPI-U from the date this business plan is approved. 211.080. The first adjustment would result in an increase to \$24 for a non-electric campsite, \$36 for an electric campsite, \$60 for a group campsite, and \$12 for use of a dump station.

6 Operating Costs

Annual operating cost for Painted Rock Campground is approximately \$99,000 per year. Table 9 describes the operating and maintenance expenses of the site.

Table 9: Annual Operating Costs for Painted Rock Campground (Existing)

Operation and Maintenance Expenses	Annual Costs (approximate)
Labor- Law Enforcement/Non-LE Patrols	\$35,000
Labor- Maintenance Staff	\$15,000
Labor-Administration	\$10,000
Restroom Cleaning Contract	\$15,000
Utilities (dumpster service, electric)	\$12,500
Vehicle Expenses (fuel, maintenance, etc.)	\$5,500
Vault Toilet Pumping	\$2,500
Camp Host Reimbursement	\$3,500
Total	\$99,000

Annual projected operating cost per newly developed campground is \$76,000. Table 10 describes the anticipated operating and maintenance expenses for each new proposed campground (Table Mesa, Boulders OHV Area, Emery Henderson and Estrella Wayside). The PDO developed these estimates based on operating costs associated with Painted Rock Campground. The new campgrounds' size, visitation and amenities will be similar to Painted Rock. Initial operating costs are anticipated to be lower for the new campgrounds compared to Painted Rock Campground since the facilities will be newer, easier to access, and closer to the Phoenix Metro. Actual operating costs may vary.

Table 10: Projected Operating Costs for Proposed Campgrounds (Table Mesa, Boulders OHV Area, Emery Henderson, Estrella Wayside)

Operation and Maintenance Expenses	Annual Costs (approximate)
Labor- Law Enforcement/Non-LE Patrols	\$20,000
Labor Maintenance Staff	\$10,000
Labor- Administration	\$8,000
Restroom Cleaning Contract	\$15,000
Utilities (trash, electric)	\$12,500
Vehicle Expenses (fuel, maintenance, etc.)	\$4,500
Vault Toilet Pumping	\$2,500
Camp Host Reimbursement	\$3,500
Total	\$76,000

7 Revenues

Table 11 shows Painted Rock Petroglyph's annual fee revenue for last 5 years. Revenue collected from the campground goes to funding law enforcement, general maintenance, trash collection and improvement projects such as access roads.

Table 11: Annual Revenue for Painted Rock Campground

Revenue by Year	Total
FY 2019	\$51,632
FY 2020	\$27,753
FY 2021	\$38,187
FY 2022	\$63,394
FY 2023	\$41,582

On average the annual revenue covers approximately 45% of operating costs.

Currently, campsites are reserved and paid for through recreation.gov. PDO anticipates enhancing on location fee compliance through use of improved e-commerce methods that work better in more remote areas.

Table 12 shows future projected revenue for each of the PDO campgrounds (existing Painted Rock Petroglyph, and proposed Table Mesa, Boulders OHV Area, Emery Henderson, and Estrella Wayside). It is anticipated that revenue would be consistent among the five locations.

PDO’s campgrounds have a seasonal user base, with most visiting in the late winter and early spring, causing revenue to reduce during hot summer months. Estimates are based on the anticipated future growth of the Phoenix metro area, annual visitation on the district, increasing demand for camping opportunities and staff observations. The estimated revenue for electric hookup campsites and dump station fees is not yet known as these have not yet been constructed.

Table 12: Future Projected Revenue (Average Per Campground) With New Fees in Place.

Site Type	Number of Reservations	Total
Individual Site (non-electric): \$20	2,500	\$50,000
Senior/Access pass discount: \$10	4,000	\$40,000
Individual Site (electric): \$30 Senior/Access pass discount: \$15	Unknown at this time; number of campsites with hookups has yet to be determined.	Unknown
Group Site: \$50	250	\$12,500
Dump Station Fee: \$10	Unknown at this time	Unknown
Total		\$102,500

With the proposed fee, each campground is expected to average \$102,000 per year, fully covering operating costs while providing a small amount of excess funds (approximately 25% of annual revenue) for future construction and emergency repairs.

8 Priorities for Future Expenditures

Each year, the Phoenix District Office anticipates saving approximately 25% from each campground’s annual revenue for long-term site maintenance and to reinvest into facilities and services that will promote program growth consistent with visitor demand. This balance provides flexibility to obtain matching funds in applying for grants, conduct emergency repairs, maintain long-term stability for staff services, improve ability to fund unanticipated costs or opportunities to enhance services, and to improve future recreation infrastructure to support visitor use.

Table 13 shows anticipated future expenditures that will be needed to manage the campgrounds separate from the routine maintenance listed in the Operating Costs (Section 6). Fee collection adoption will involve setting up kiosks and signage that would allow for e-commerce options. Access road repair is conducted on a long-term, case-by-case basis.

Table 13: Future Expenditures and Cost Estimate

Future Expenditures	Cost Estimate
Fee collection adoption - short term	\$10,000
Access road repair - long term, ongoing	\$15,000/year

9 Analysis of Recreation Fee Rates

9.1 Fair Market Value

Table 14 shows the fair market value comparison analysis for the services provided by the PDO’s current and proposed fee campgrounds to nearby fee campgrounds operated by other

entities. These entities include the National Park Service, U.S. Forest Service, Arizona State Parks, Maricopa County Parks, and Kampgrounds of America (KOA) all of which provide similar fee-based services in the Phoenix Metro Area.

Table 14: Comparability Analysis of Nearby Similar Fee Sites

Campground Name	Agency or Operator	Campground Fees	Amenities Offered	Key Amenity Differences in Comparable Sites
All Existing and Proposed Phoenix District Campgrounds	BLM	<p>Painted Rock Campground Current Fees: Day Use Fee: \$2.00 Camping Fee: \$6.00 Overnight Fee: \$8.00</p> <p>Proposed Fees for all current and proposed Phoenix District Campgrounds: Day Use Fee: \$0 Camping – Individual Site (non-electric) Fee: \$20.00 Camping – Individual Site (electric) Fee: \$30.00 Group Campsite Fee: \$50.00 Dump Station Fee: \$10.00 Senior and Access Pass give 50% discount on individual campsites.</p>	<p>Painted Rock Campground: vault toilets, trash collection, picnic tables, steel fire rings, access roads, tent, and trailer sites.</p> <p>Proposed Campgrounds, depending on level of development: may include group campsites, concrete or gravel RV pads, tent pads, designated campsites accommodating class A,B,C motorized RV's and travel trailers, picnic tables, fire rings, ADA accessible vault toilet facilities, ramadas, trash collection, RV dump station, electric hookups, and disc golf course.</p>	No running water, no entrance stations to control access
Organ Pipe Cactus National Monument Twin Peaks Campground Alamo Canyon Campground	National Park Service	<p>Entrance fee: \$25.00 Good for 7 days. Camping fees are \$20.00 per night for developed campsites. Non-developed \$16.00. Group Campsites \$50/night. Senior and Access pass give 50% discount for individual campsites. Dump station free for campers.</p>	No hookups, restrooms have running water, free solar shower, picnic tables, grills, fire rings, RV campsites up to 45' long.	Running water, free solar showers.

Campground Name	Agency or Operator	Campground Fees	Amenities Offered	Key Amenity Differences in Comparable Sites
All Tonto U.S. Forest Service Campgrounds	U.S. Forest Service	Standard site fees range from \$16-29 per night with double campsites ranging from \$38-50 per night. Group sites charge from \$50-175. Senior and Access pass give 50% discount.	Amenities vary by campground, all standard campsites have at least fire rings, pit toilets, picnic tables, more developed ones have ramadas, playgrounds, water hydrants, flush toilets, hot showers.	Extra amenities like showers, playgrounds, flush toilets.
Lost Dutchman State Park	Arizona State Parks	Daily entrance fee: Vehicle: \$10.00. Individual/Bike \$3.00. Entrance fee waived if camping. Rustic Camping (Hike In) \$25.00 Camping (Non-Electric) \$25.00 Dump station free for campers.	Every site has a picnic table, and a fire pit with adjustable grill gate. There are no size restrictions on RVs. Dump station, showers, restrooms.	Running water, showers.
All Maricopa County Parks Campgrounds	Maricopa County	Vehicle entry: \$7.00 Hike/Bike/Horse \$2.00 Developed camping \$32.00 Semi-Developed camping \$22 Primitive camping \$15.00 Dump station free for campers Entry fee credited toward camping fee	Developed campsites with restrooms, electrical and water hookups, picnic tables, and grills. Semi-developed campsites with restrooms, picnic tables and grills. Primitive campsites, no amenities.	Dump station free for campers
Kampgrounds of America (KOA) in Mesa/Apache Junction	Private	Rates fluctuate Tent camping \$35-60 RV camping \$40-84	These are the most developed campsites listed with full hook ups, picnic tables, bathrooms, showers, ramadas, 70-foot max length RV, heated pool with hot tub and sauna, Wi-Fi.	Unique amenities like Wi-Fi, hot tubs, and saunas.

The proposed fees for PDO's Painted Rock Petroglyph and four proposed campgrounds is in line with comparable sites in the Phoenix area. PDO's non-electric campsites compare closely with U.S. Forest Service campgrounds and offer similar layouts and amenities. Comparable electric campsites include Maricopa County and the KOA. Some of the more developed sites on this list

with higher camping fees have amenities such as running water, showers, and full bathrooms. That level of amenity is not currently planned at PDO's campgrounds. Most of the campgrounds on this list have controlled access, allowing them to provide dump stations free for campers. Because PDO would not be able to control access, this business plan proposes a charge of \$10 per use of the dump stations.

9.2 Cost Recovery Fee Calculation Method

The long-term goal of the expanded amenity fees for PDO campgrounds would be to 1) cover 100% of the average annual operating costs of contractual services, equipment, materials, and supplies, and 2) maintain fee revenue reserves of one year of average annual operating costs in the event of unexpected maintenance or operational needs. The 5-year average revenue at Painted Rock Petroglyph Campground is \$44,500 revenue per year. Full cost recovery, without the need for appropriated funding, is based on 5,000 individual campsite fees collected compared to the overall operating costs of \$99,000 per year and would be a fee of \$19.80. Full cost recovery of \$19.80 is close to PDO's proposed fees in the case of Painted Rock Campground. Without visitation data for the proposed campground areas, cost recovery cannot be calculated.

10 Impacts from Changing and Not-Changing Recreation Fee Rates

Consistent with the Department of the Interior and BLM priorities, the BLM Phoenix District Office seeks to achieve environmental justice, equity, diversity, inclusion, and accessibility and make a difference in the Phoenix area communities through expanding recreational diversity, access and opportunities. This includes to:

- encourage, facilitate, and improve partnership with and access for youth, tribes, and underserved communities to public lands through recreation partnerships and collaborations;
- improve public health and safety at developed recreation sites and areas by updating and modernizing infrastructure and improving facility amenities—including meeting accessibility standards for people with disabilities;
- invite education, interpretation, and recreational access for all Americans, especially for diverse populations and those near urban areas to encourage enjoyment of BLM-managed public lands and waters;
- collaborate with community members, government organizations, nonprofit organizations, academic institutions, and other stakeholders to address environmental and health-related challenges for recreation management;
- enhance understanding of environmental and health-related issues at the community level;
- improve methods for identifying, addressing, tracking, and measuring progress toward achieving environmental justice;
- and develop and support youth education and outreach programs.

Tables 15 and 16 provide demographic information of local residents, including income and race, for environmental justice considerations. They were created using census data of local communities and the two counties that encompass the campgrounds on the Phoenix District.

Table 15: Reference Area - Environmental Justice Considerations

Reference area	Maricopa County	Yavapai County	Arizona	United States
Total population in 2021	4,367,186	233,789	7,079,203	329,725,481
Median household incomes (\$) in 2021	72,944	56,170	65,913	69,021
Low-income population in 2021	28.6%	32.0%	31.7%	29.2%
Minority population in 2021	46.2%	20.6%	46.6%	40.6%

Data source: compiled based on U.S. Census Bureau, 2023, 2017-2021 American Community Survey 5-Year Estimates.

DRAFT

Table 16: Analysis Area - Environmental Justice Considerations

Analysis area	Phoenix, Maricopa County	Peoria, Maricopa County	Black Canyon, Yavapai County	New River, Maricopa County	Sun City, Maricopa County	Gila Bend, Maricopa County
Total population in 2021	1,591,119	187,733	2,485	17,731	37,693	1,743
Median household incomes (\$) in 2021	64,927	81,017	63,843	110,257	46,201	42,022
Low-income population in 2021	35.5%	21.2%	46.7%	8.5%	27.5%	50.8%
Minority population in 2021	58.6%	34.0%	11.7%	12.3%	8.6%	77.5%
EJ community criterion 1: minority population higher than 50%	Yes	No	No	No	No	Yes
EJ community criterion 2: minority population higher than 110% of reference area	Yes	No	No	No	No	Yes
EJ community criterion 3: low-income population higher than 50%	No	No	No	No	No	Yes
EJ community criterion 4: low-income population higher than 100% of reference area	Yes	No	Yes	No	No	Yes
EJ community criterion 5: tribal community	No	No	No	No	No	No
EJ community (overall)	Yes	No	Yes	No	No	Yes

Data source: compiled based on U.S. Census Bureau, 2023, 2017-2021 American Community Survey 5-Year Estimates.

10.1 Anticipated Results of Not Establishing New Fees

By not establishing the new fees in this business plan the Phoenix District would not be able to provide adequate maintenance and monitoring for the already established campground Painted Rock Petroglyph. Without the new fees Phoenix District would not have the funding to be able to achieve goals of improving visitor experiences and would likely need to minimize services and amenities offered. This would also hamper the goal of growing the recreation program. Without the introduction of fees there would be inadequate funding available to construct the planned campgrounds, meaning PDO may not be able to develop the four proposed campgrounds, thus limiting the formal recreational camping experiences it could provide in the area.

10.2 Impacts of Fee Changes

Market research indicates that the proposed fees are aligned with other area campgrounds. There are options for free camping on BLM lands near the areas where the existing and proposed campgrounds are located for users who desire a dispersed camping experience. Several of the proposed campgrounds also include primitive camping areas to provide a diversity of recreation experiences to visitors. With the addition of four proposed developed campgrounds on the district office public lands, it is anticipated that there would be less of an environmental impact on dispersed camping areas that receive high use. The developed campgrounds would focus camping into facilities, which would lessen environmental damage and provide a more sustainable option for BLM recreational users. With more diverse recreational options on the district, we will see a potential increase in visitation that would benefit the local tourism industry and economy.

11 Public Outreach

The draft business plan will be made available for a 45-day comment period. Statewide outreach efforts will include news releases, social media posts, and on-site signage.

Comments may be submitted by email to blm_az_pdo_recreation@blm.gov, in person at the Phoenix District Office, or via mail to BLM Phoenix District, Attn: Business Plan, 2020 E. Bell Road, Phoenix, AZ 85022.

The BLM's plan for outreach and notice about fees includes:

- 45-day public comment period from September 6-October 21, 2024.
- Public notice of proposed fee changes posted on site along with information on how to provide comments.
- News release, ArcGIS StoryMap, and social media posts announcing the public comment period for proposed fee changes, including information on how to provide comments.
- Information on proposed and/or approved fee changes will be posted on BLM's website at <https://www.blm.gov/programs/recreation/permits-and-fees/business-plans>.
- Public information sessions about the fee proposals and how to provide comments.
- Any approved fee changes would be updated on the fee signs onsite to clearly reflect the fee changes when new fee schedule implemented.
- Publication of a Federal Register Notice.

Once the public comment period is completed and any changes are made to the fee proposal because of analysis of the public participation, the PDO will present the draft business plan proposal to the Arizona Recreation Resource Advisory Committee (RAC) in 2024.

These outreach methods comply with requirements established by FLREA and BLM policy.

Before charging fees at new fee sites, the following outreach will occur:

- Publish a Notice of Intent in the Federal Register at least six months in advance of implementing fees at new fee sites.
- Issue a news release about the Federal Register Notice of Intent.
- Physically post the Federal Register notice near each of the new sites.

DRAFT

12 Appendices

Page intentionally left blank in draft version.

DRAFT

13 References

- BLM. 2022. E-Commerce Technologies for Recreation Fee Collections and Reservation Services. Instruction Memorandum 2022-010. U.S. Department of the Interior. Ed. Mark Lambrecht
- U.S. Bureau of Labor Statistics (BLS), 2023, Consumer Price Index Retroactive Series (R-CPI-U-RS), U.S. City Average, All Items, <https://www.bls.gov/cpi/research-series/r-cpi-u-rs-home.htm>
- U.S. Census Bureau (USCB), 2023a, 2018-2022 American Community Survey 5-Year Estimates and 2012-2016 American Community Survey 5-Year Estimates, <https://data.census.gov/cedsci/table>
- U.S. Census Bureau (USCB), 2023b, Cartographic Boundary Files, Year of 2022, Scale of 1:500,000 <https://www.census.gov/geographies/mapping-files/time-series/geo/cartographic-boundary.html>
- USDA Forest Service (USFS), 2016, Region 3 Tonto National Forest National Visitor Use Monitoring <https://www.resolutionmineeis.us/documents/usfs-visitor-use-monitoring-2016>