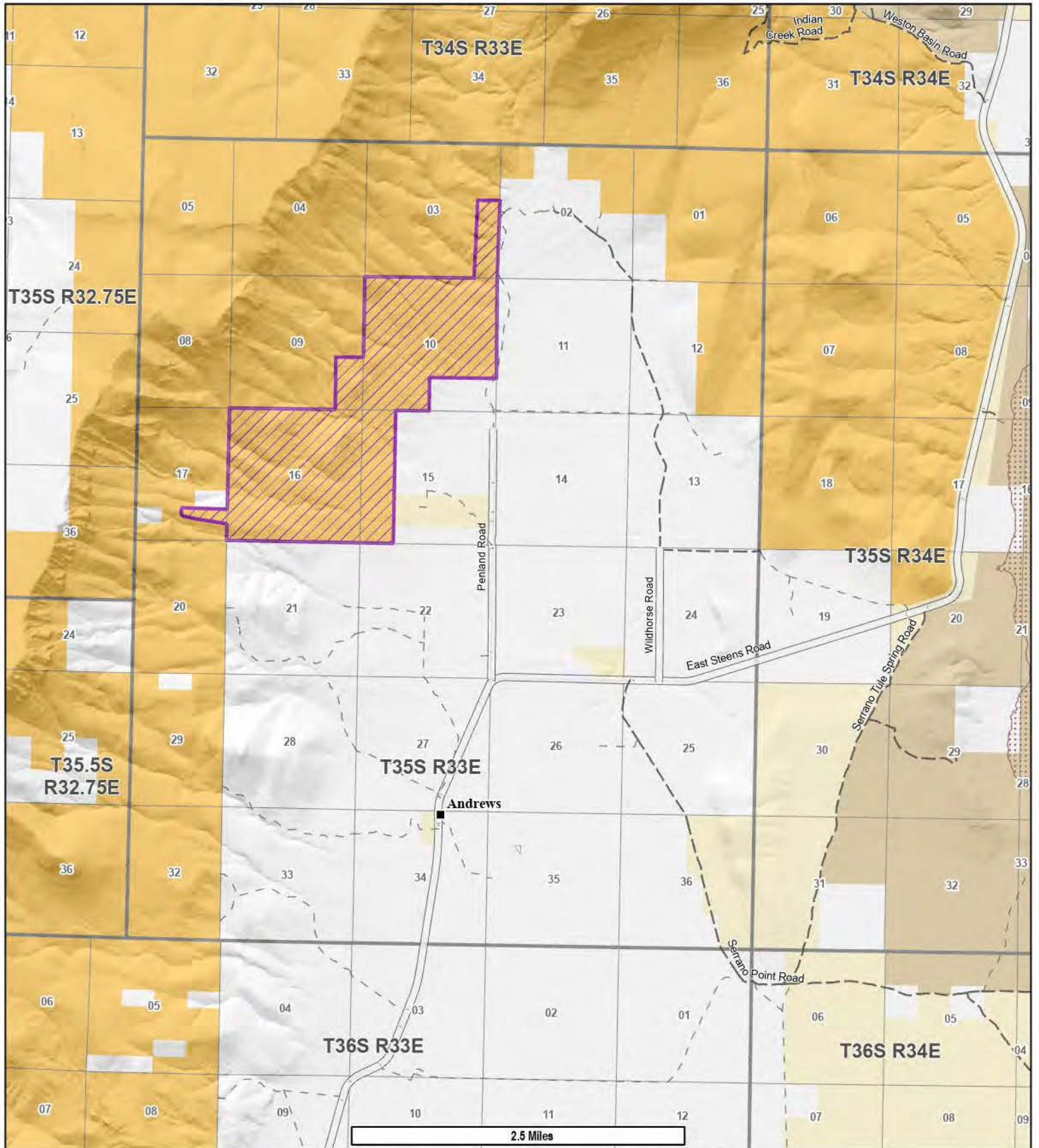





Serrano Point Stonehouse Unit - 1,492 Acres

Project Location Map



-  Aerial 2024
-  Paved or Graveled Road
-  Natural Route Surface
-  Primitive or Not Known Route Surface
-  Playa
- Not All Lakes Are Shown

- Land Administration
-  Bureau of Land Management
 -  Privately Owned
 -  BLM Wilderness Study Area
 -  Steens Mtn Wilderness




DEPARTMENT OF THE INTERIOR
 Bureau of Land Management
 Burns District, Oregon

Note: No warranty is made by the Bureau of Land Management as to the accuracy, reliability or completeness of these data for individual or aggregate use with other data. Original data was compiled from various sources and may be updated without notification.

7/10/2024 ikwatts

<https://www.blm.gov/pressroom/2024/07/10/serrano-point-stonehouse-unit>