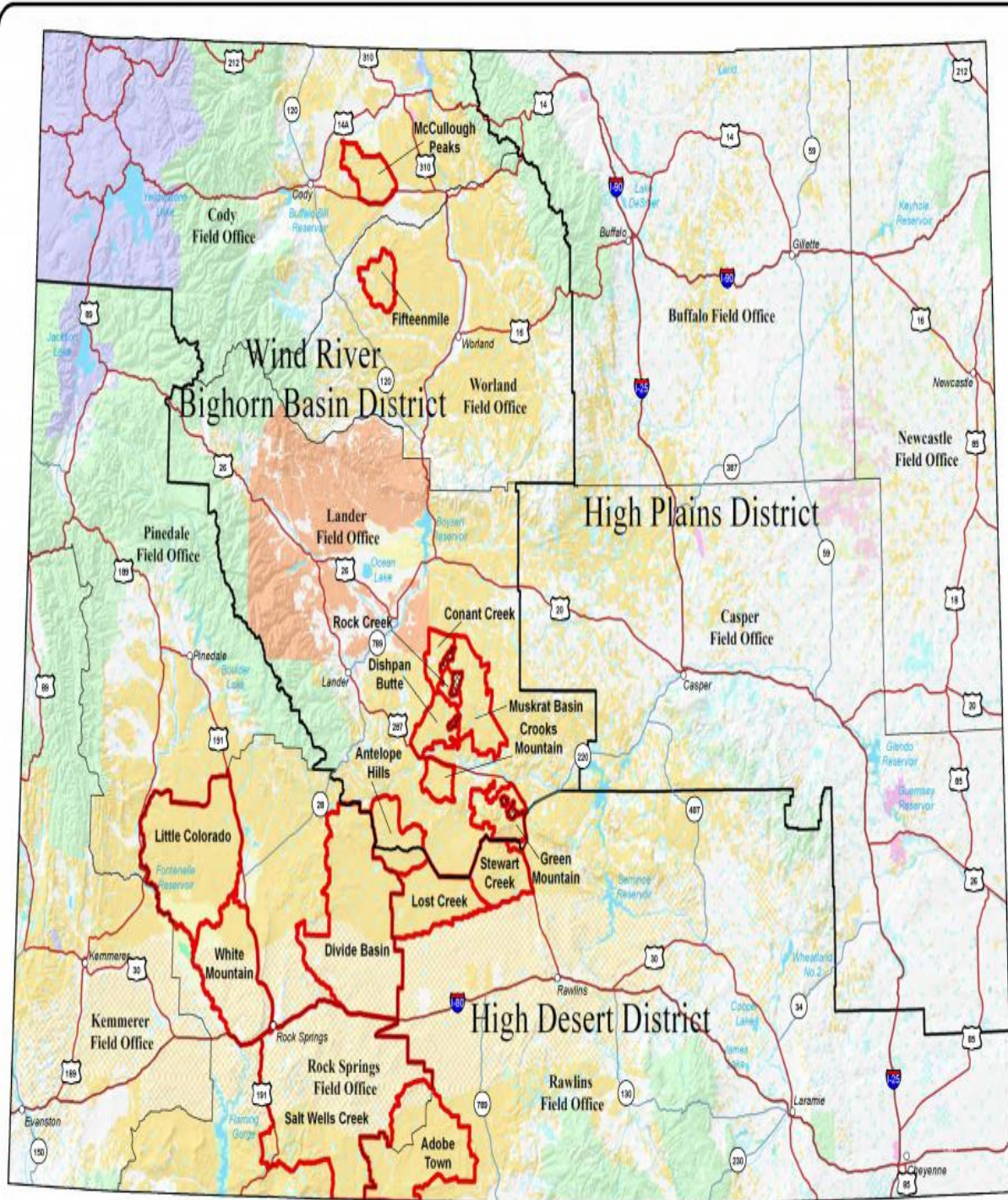


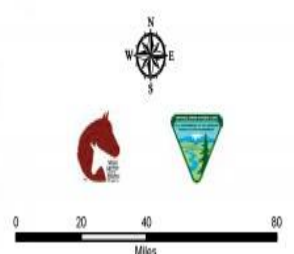
BLM Wyoming Herd Management Areas (HMAs)



Legend

- Herd Management Areas
 - Areas within the HMA - not included
 - District Boundaries
 - Field Office Boundaries
- Surface Jurisdiction**
- Bureau of Land Management
 - Bureau of Reclamation
 - Bureau of Indian Affairs
 - Bankhead Jones
 - Corps of Engineers, DOD
 - DOE
 - Fish & Wildlife
 - Forest Service
 - National Grasslands
 - National Park Service
 - State
 - Private

HERD MANAGEMENT AREAS	APPROPRIATE MANAGEMENT LEVEL	BLM Acres	Other Acres
Adobe Town	610-800	444,321	34,757
Antelope Hills	60-82	150,896	7,796
Conant Creek	60-100	49,528	8,190
Crooks Mountain	65-85	54,726	3,698
Dishpan Butte	50-100	92,275	7,466
Divide Basin	415-600	561,463	217,507
Fifteenmile	100-230	68,673	12,536
Green Mountain	170-300	99,311	17,363
Little Colorado	69-100	527,307	105,020
Lost Creek	60-82	236,353	15,041
McCullough Peaks	70-140	103,920	5,928
Muskrat Basin	160-250	176,340	16,922
Rock Creek Mountain	50-86	19,100	5,483
Salt Wells Creek	251-365	688,632	483,993
Stewart Creek	125-175	157,514	10,329
White Mountain	205-300	207,981	185,092
TOTAL:		2,490,3725	3,638,330



DISCLAIMER: No warranty is made by the Bureau of Land Management for the use of the data for purposes not intended by BLM.

April 5, 2011