

Rocky Mountain District Fuels

ROYAL GORGE FIELD OFFICE & SAN LUIS VALLEY FIELD OFFICE



About Rocky Mountain District

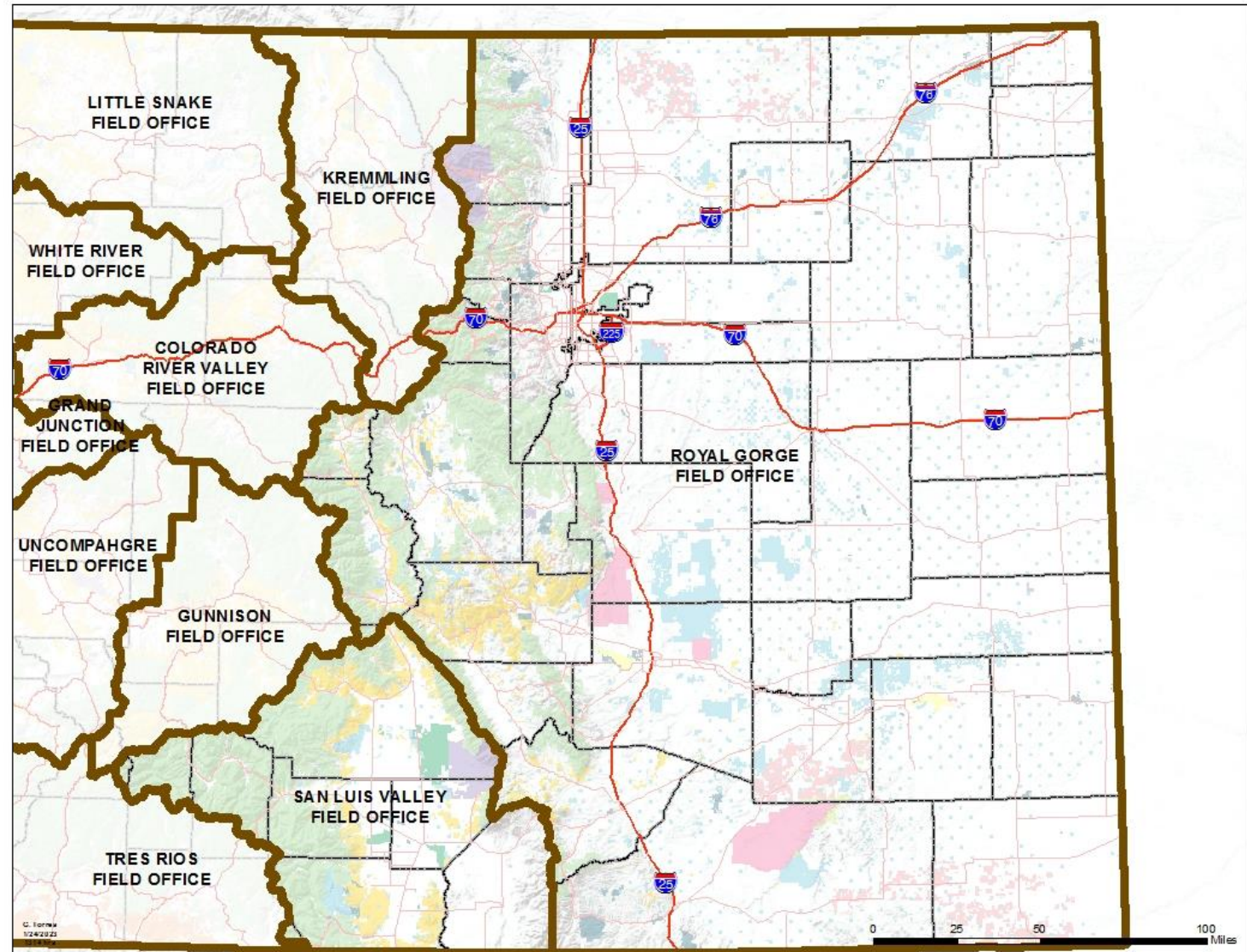
1,289,083 acres of BLM Administered Lands within the Royal Gorge and San Luis Valley Field Office Boundaries

Covers BLM lands east of the Continental Divide to the Colorado-Kansas State Line and from the Wyoming State Line to the New Mexico State line.

There are 44 counties in the planning area, 33 of which have BLM (surface) lands.

There are 2 dispatch Centers (Pueblo Interagency Dispatch and Fort Collins Interagency Dispatch).

Work with Pike San Isabel NF and Comanche Cimarron N.G. , Rio Grande National Forest, Alamosa, Baca and Monte Vista National Wildlife Refuge, Colorado DFPC, GMUG NF, Colorado State Forest Service



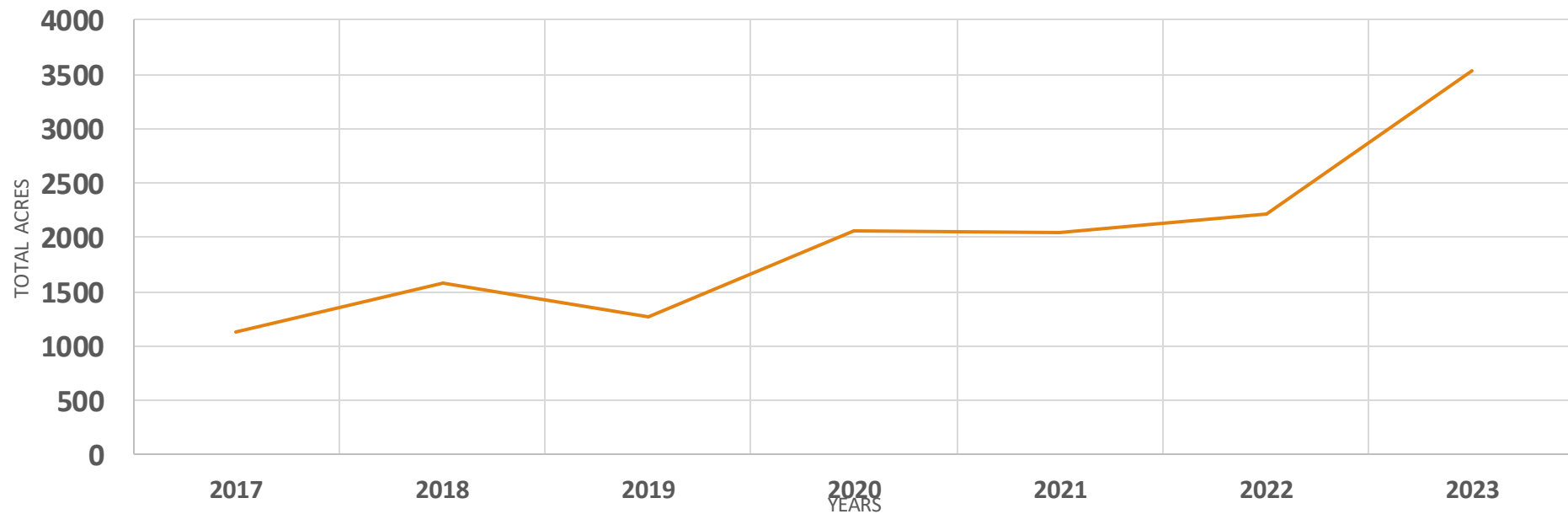
San Luis Valley FO Projects

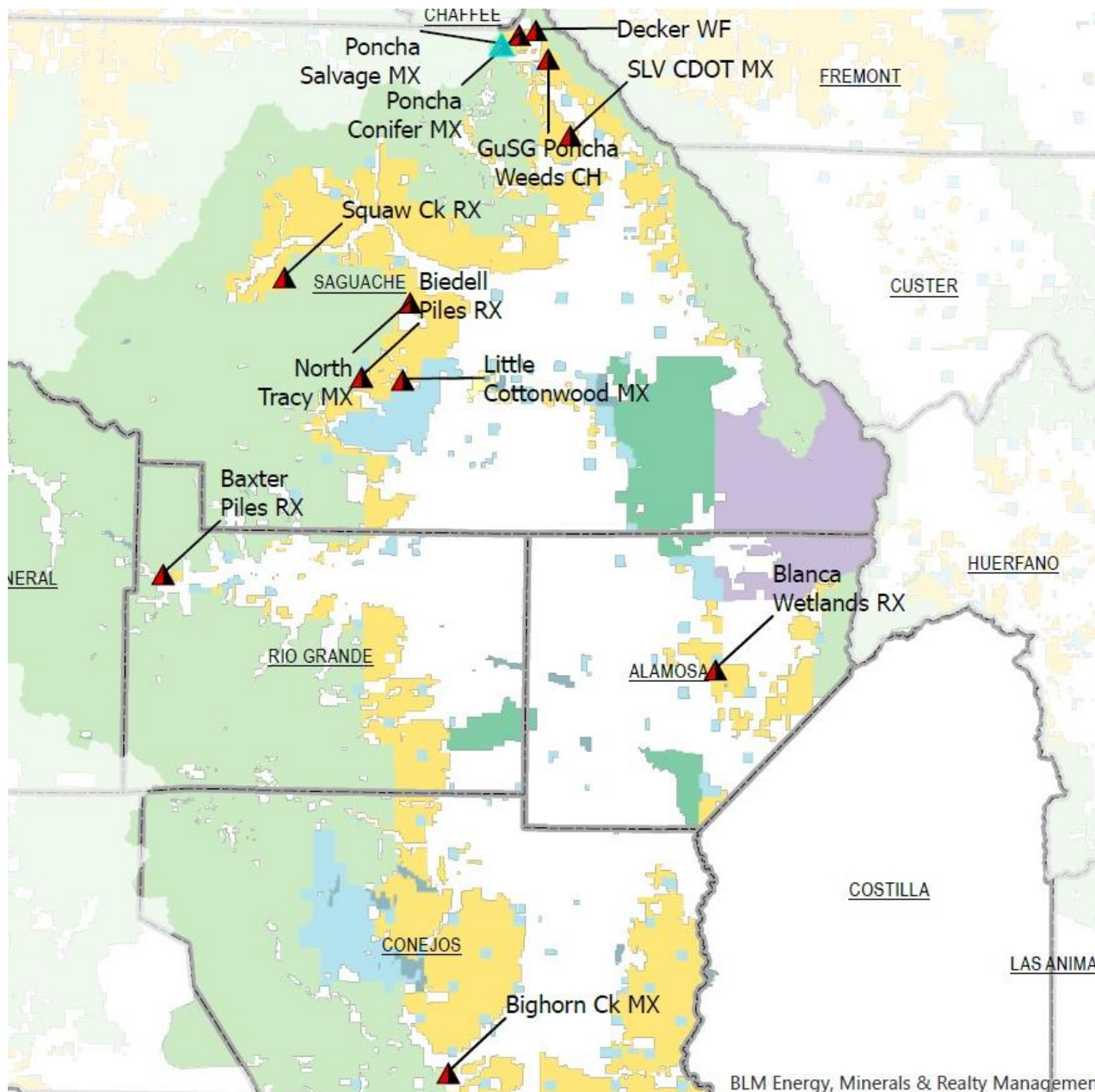
MASTICATION, BROADCAST
BURNING, PILE BURNING,
CHEMICAL TREATMENT,
MOWING, SALVAGE LOGGING



RMD Fuels Treatment Acres Stats

**Total Acres Treated RMD Fuels
MECHANICAL, CHEMICAL, AND PRESCRIBED FIRE**



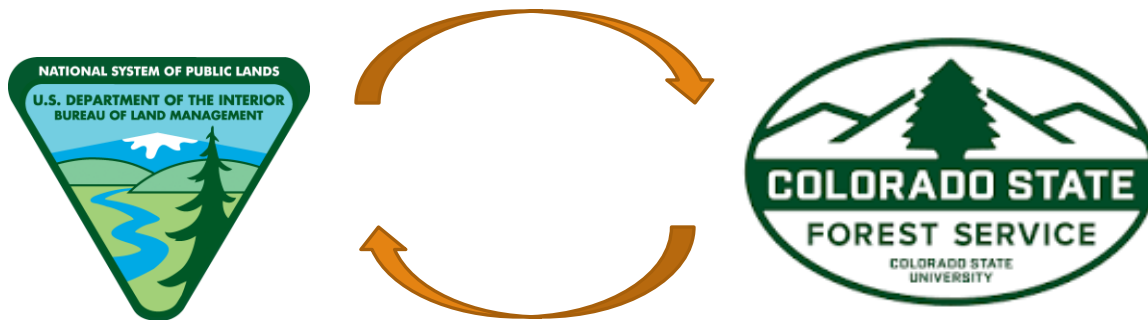


RMD Fire & Fuels in the SLV

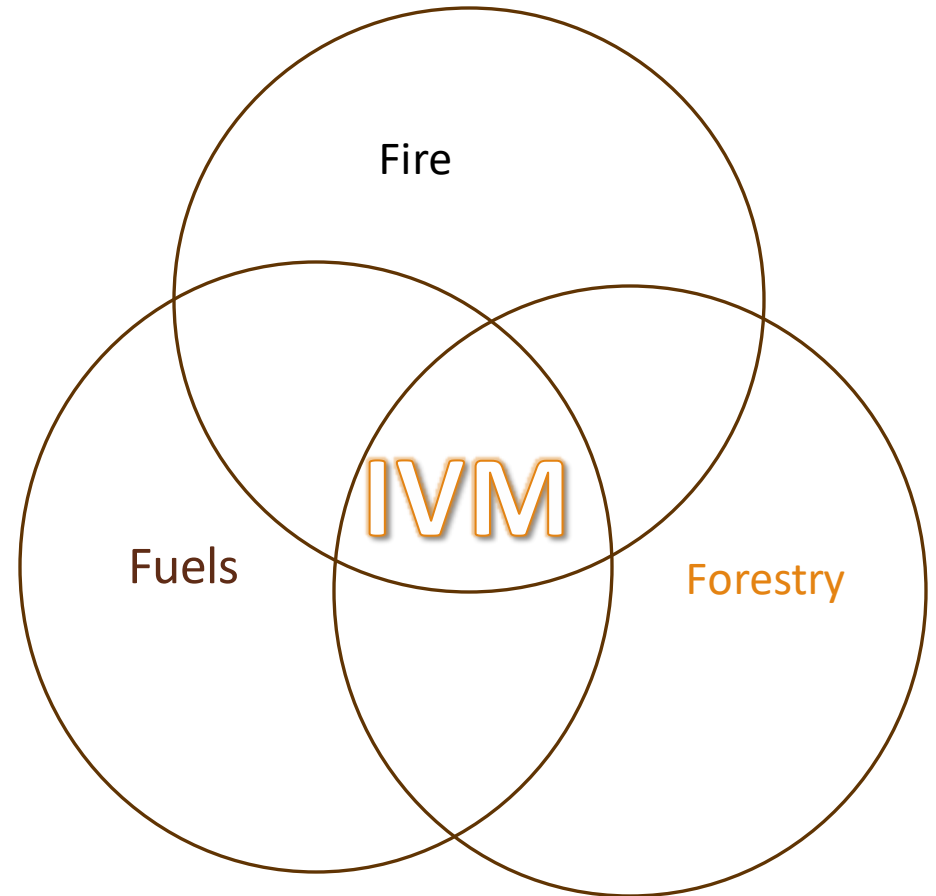
- SLVFO is approximately 500k acres
 - Primarily transition zone from valley floor to National Forest
 - Fuels Specialist added in 2019
-
- From 2019 to 2023
 - 1,367 acres mastication*
 - 1,051 acres broadcast
 - 180 acres pile burns
 - 245 acres hand thin/pile
 - 1,045 acres chemical treatment
 - 210 acres of lop/scatter (additional 2,576 covered in NEPA)
 - 60 acres of managed WF
 - 152 acres of salvage logging
 - 4,150 acres total (*another 400 under contract)

Good Neighbor Authority

- Partnering with Colorado State Forest Service to provide Forestry related service on BLM lands
- Utilizing State contracting mechanisms to operate on BLM and private lands to promote cross boundary treatment
- Reducing hazardous fuels adjacent to private lands through salvage logging and other forestry practices
- Directing BIL funding to on the ground implementation by local vendors



Integrated Vegetation Management





Integrated Vegetation Management

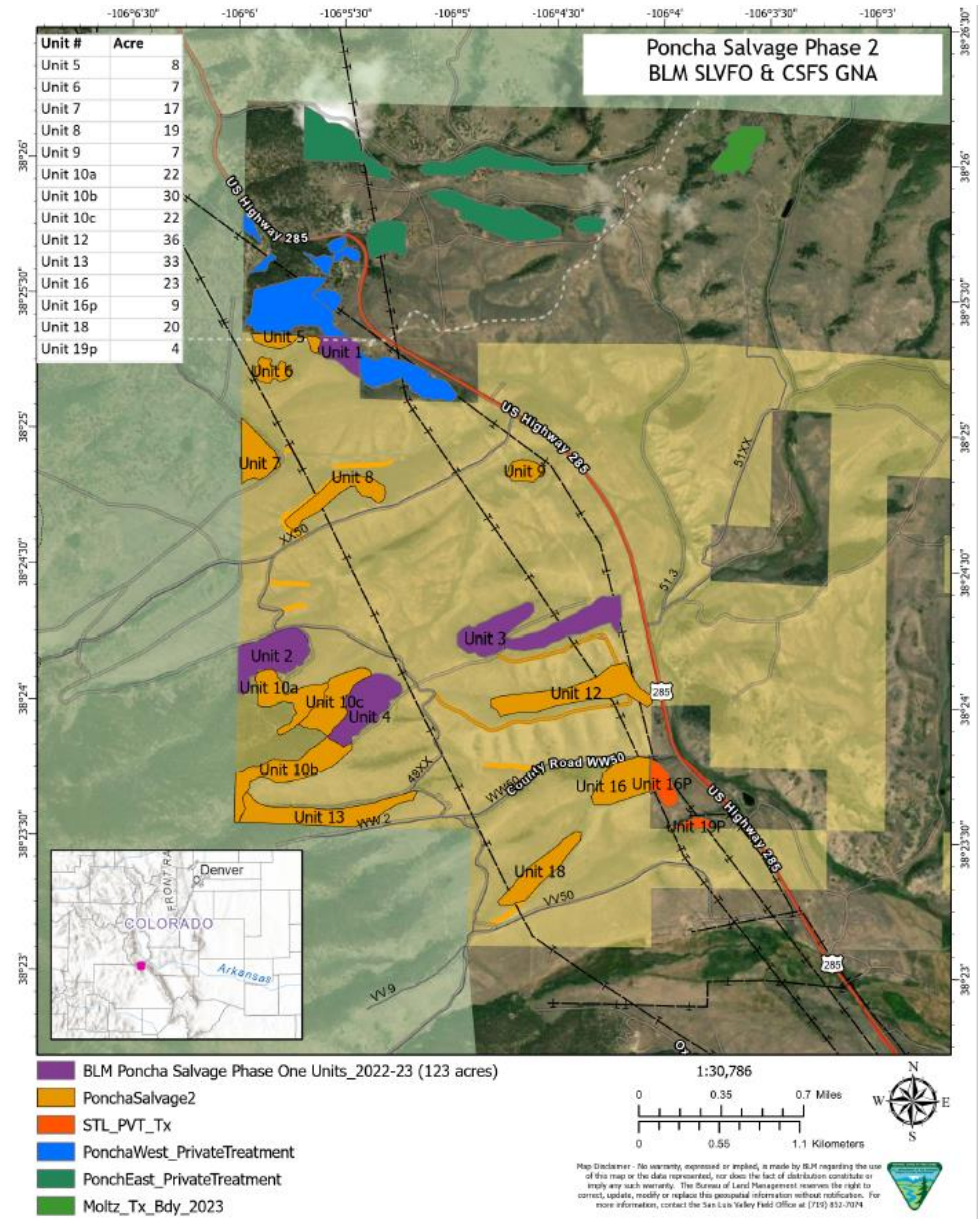
Utilizing both BLM Fuels and BLM& CSFS Forestry to work together to fund fuels reduction projects across boundaries.

Adding BIL funding to an existing agreement to add CSFS Forester to focus on BLM GNA projects.

Increasing CSFS local capacity to develop and implement projects on BLM and private lands.

Poncha Salvage

- Four local logging vendors operating on both BLM and Private lands
- 123 BLM acres (purple) nearing completion
- 86 acres private (blue) completed
- 154 acres BLM next phase (black outline) to begin November 2024
- 137 acres private next phase (light/dark green) to begin July 2024



Poncha Salvage Unit 2

BEFORE



AFTER



Poncha Salvage Unit 3

BEFORE



AFTER



❑ BIL funding treating public lands while directly impacting local economy through contracting with five local vendors plus a local sawmill

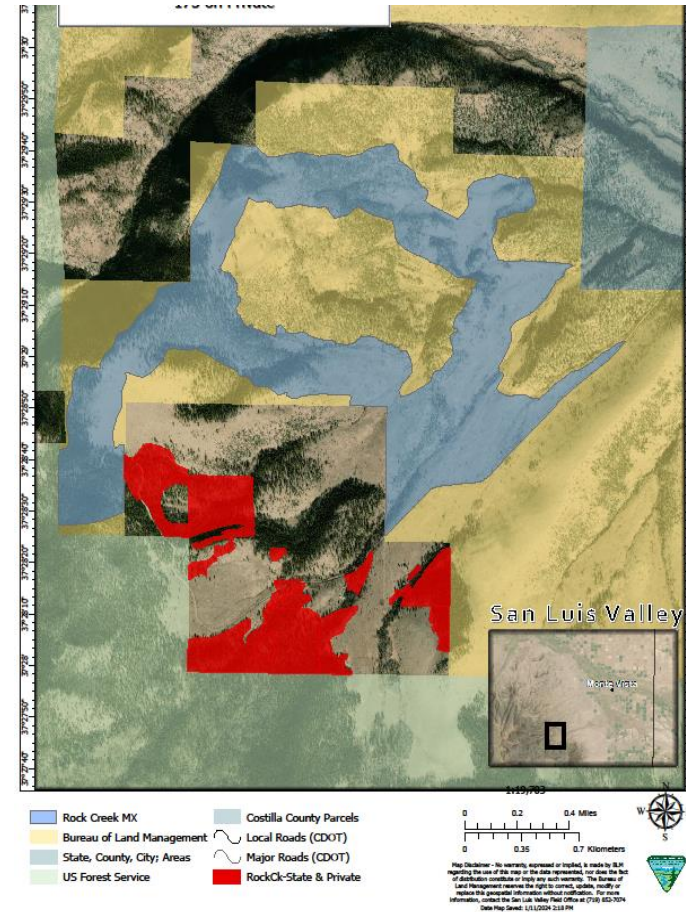
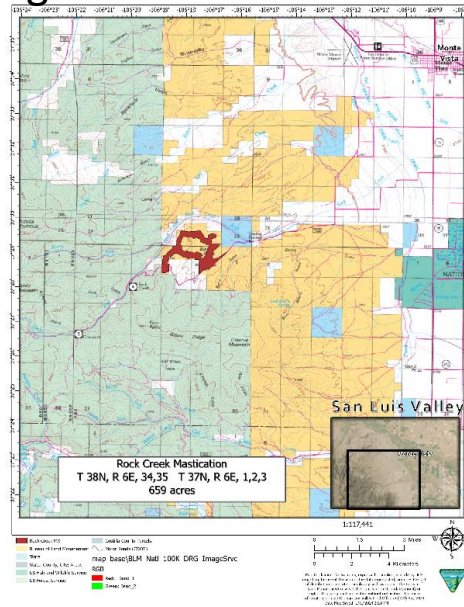
❑ With Poncha Salvage Phase 1, over 50 loads to local sawmills in San Luis Valley



Current/Future GNA Projects

Rock Creek Mastication

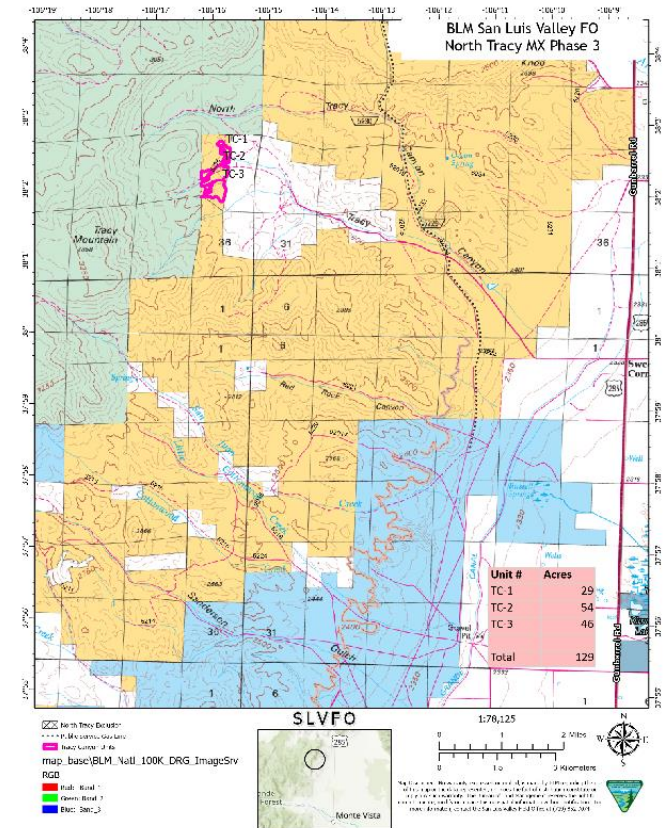
- 659 acres BLM & 175 acres Private
- CSFS finalizing Contract Statement of Work
- Expected Implementation late summer 2024
- Mix of funding streams between two agreements



Current/Future GNA Projects

North Tracy Mastication

- Completed 880 acres north and east of subdivision
- Last three units on BLM are 130 acres
- Unknown amount of private



Progress on Poncha Pass

<https://www.youtube.com/watch?v=luiHshTKFHQ>