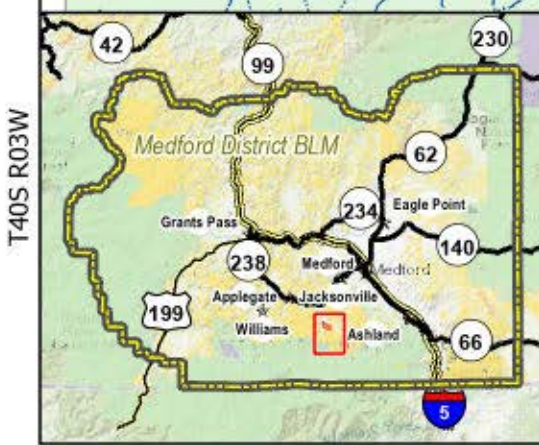
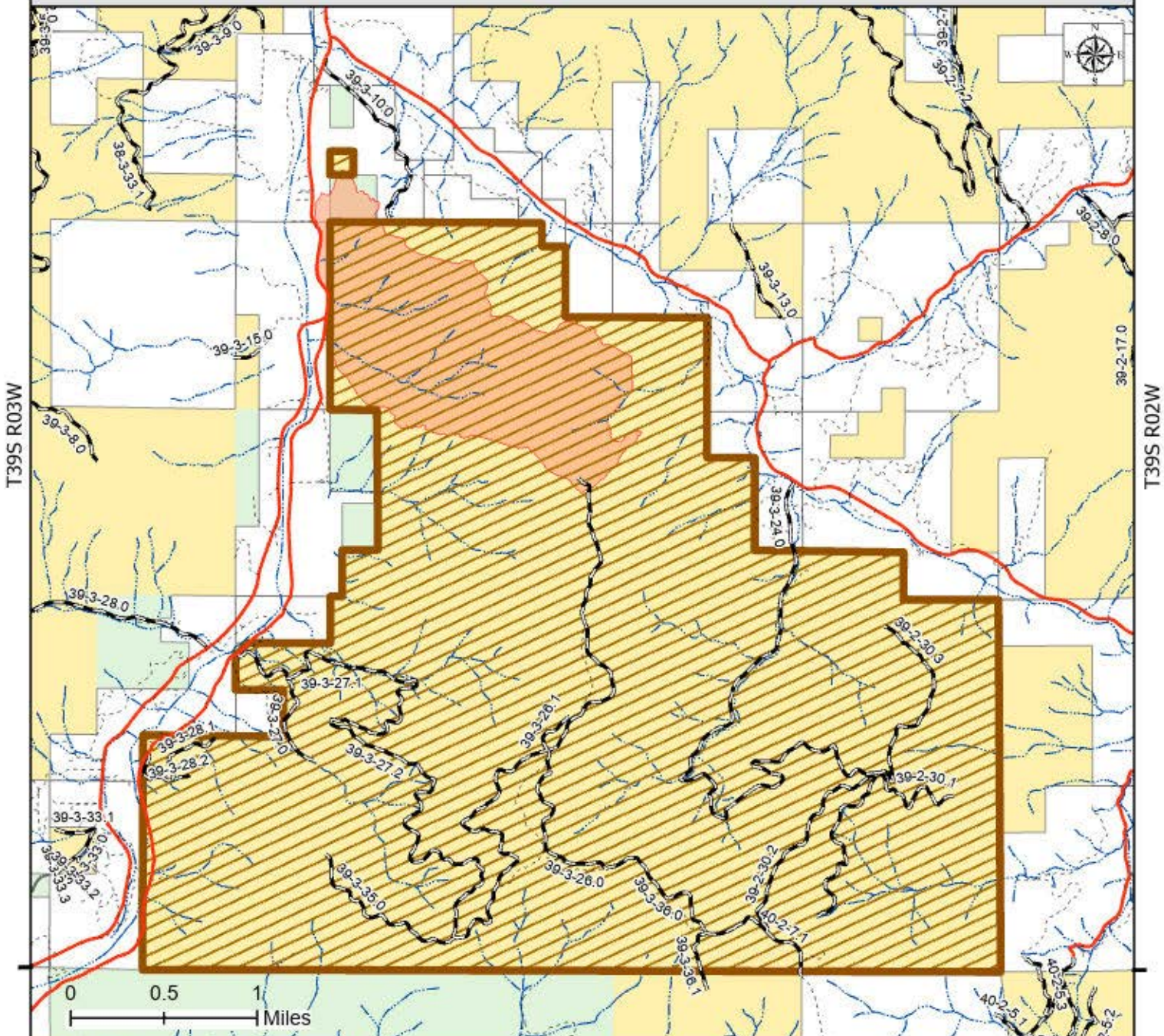




# Upper Applegate 3900 - Public Land Closure



### Incident Information

- Area Closed to Public
- Upper Applegate 3900 Fire Perimeter

### Boundaries

- Bureau of Land Management
- U.S. Forest Service
- Private/Unknown
- DOB\_POLY

### Transportation

- Bureau of Land Management
- County route
- Forest Service
- Municipal, Private or Unknown
- Stream/River

No warranty is made by the Bureau of Land Management as to the accuracy, reliability, or completeness of these data for individual or aggregate use with other data. Original data were compiled from various sources and may be updated without notification.