



# Special Recreation Permits on BLM-managed Lands

## What is a special recreation permit?

Special Recreation Permits (SRPs) are authorizations that allow for specific recreational uses of BLM-managed lands and related waters.

As authorized by the Federal Land Policy and Management Act of 1976 and 43 Code of Federal Regulations (CFR) 2930, SRPs are required for five types of recreational use: Organized Groups/Events, Commercial Use, Competitive Use, Vending, and Recreation Use in Special Areas.

### Why do I need an SRP?

SRPs are issued as a means to manage visitor use, accommodate commercial recreation, and protect natural and cultural resources on public lands.



### How do I get an SRP?

Start with a **FREE pre-application consultation** with the appropriate BLM office (see map on back). The field office will determine if you need a permit for your activity.

Applications should be turned in at least 180 days prior to the proposed use. Please be aware that some field offices have application deadlines.



## When do I need an SRP?

### Organized Groups/Events

Permits can be issued for noncommercial and non-competitive group outdoor recreation activities/events as determined by the BLM Field Office for that area (e.g. wedding, family reunion, scout group campout, fraternity activity, retreat, historic reenactment, four-wheel drive event). If the event is not primarily recreational in nature, a land use permit may be more appropriate. Please contact the appropriate BLM field office for organized group/event permit requirements.

### Commercial Use

An activity is commercial if anyone collects a fee or receives compensation that is in excess of actual expenses (e.g. fundraising, outfitter/guide services, guided backpacking, courses with a recreation component, outdoor skills workshops, motorized tours, guided horse rides). Commercial use is also characterized by situations when an expectation of safety is owed to participants as a result of compensation, or when paid public advertising is used to seek participants. When recreation use by scientific, educational, and therapeutic institutions or nonprofit organizations is deemed commercial, these groups will be subject to permit requirements. The nonprofit status of a group/organization does not determine that an event or activity arranged by such a group/organization is noncommercial.

**Noncommercial (may not require a permit; contact BLM field office)** An activity may be deemed noncommercial when all components are met: no compensation is received for the activity, the activity leaders' positions are not established to organize and/or conduct recreation activities, no fees other than cost sharing of actual expenses are paid by participants, the activity is not publicly advertised, and the organizers share trip expenses equally with participants.

### Competitive Use

Permits can be issued for an organized, sanctioned, or structured use, event, or activity on BLM-managed lands and related waters in which two or more contestants compete (e.g. OHV races, poker rides, mountain bike races, orienteering), or in which one or more contestants challenge an established record (e.g. speed or endurance). Competitive events may also be commercial.

**SRP fees can vary from the minimum fee (\$130), a daily fee per person (\$7), or 3% of gross receipts. Contact the appropriate BLM office for information on fees and other permit types.**



# BLM Nevada Field Offices

## Special Recreation Permit Contacts

Black Rock  
Field Office

775-623-1500  
blm\_nv\_br\_srp  
@blm.gov

Humboldt River  
Field Office

775-623-1500  
blm\_nv\_hr\_srp  
@blm.gov

Sierra Front  
Field Office

775-885-6000  
blm\_nv\_sf\_srp  
@blm.gov

Stillwater  
Field Office

775-885-6000  
blm\_nv\_sw\_srp  
@blm.gov

Mount Lewis  
Field Office

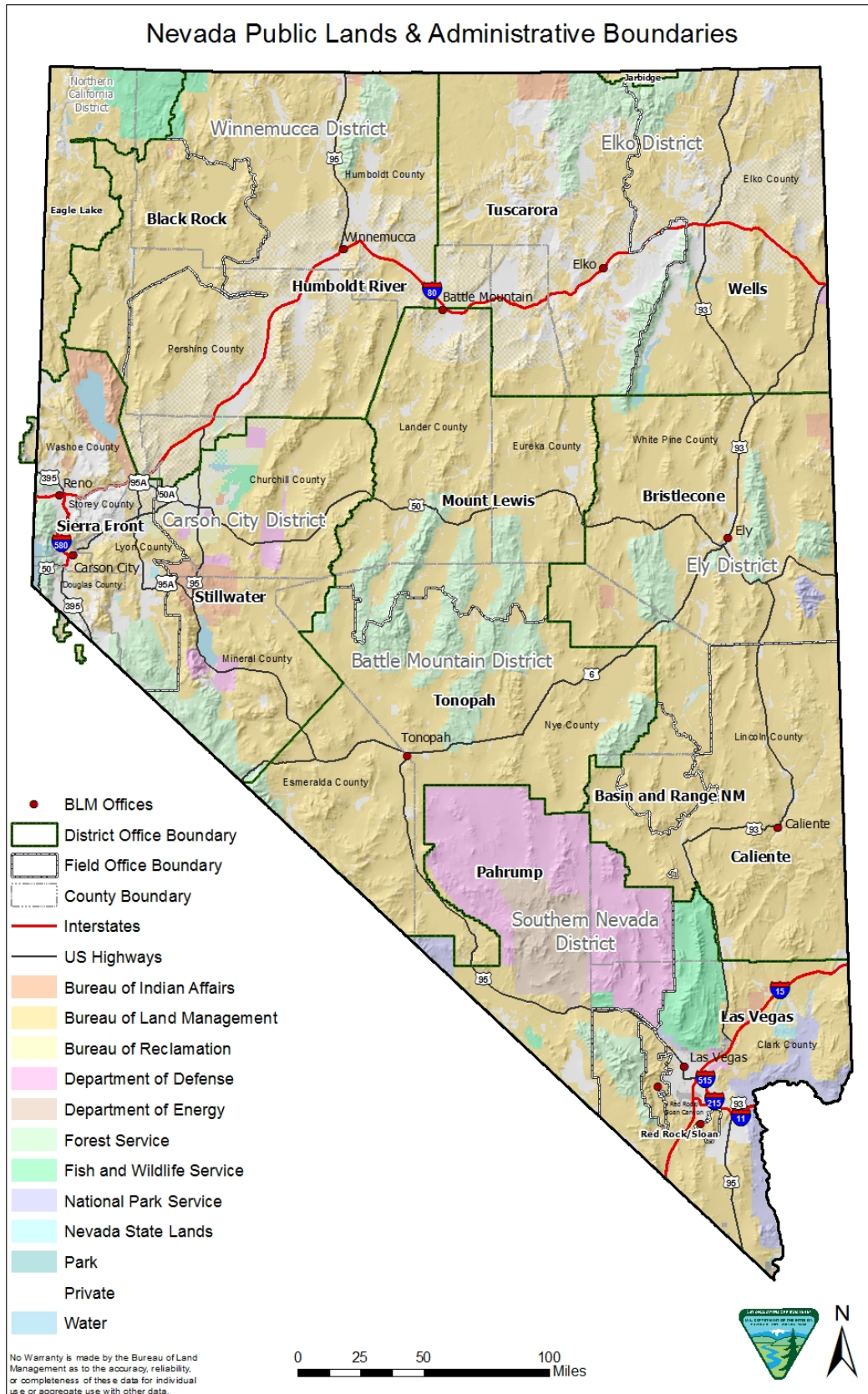
775-635-3000  
blm\_nv\_ml\_srp  
@blm.gov

Tonopah  
Field Office

775-482-7800  
blm\_nv\_to\_srp  
@blm.gov

Pahrump  
Field Office

702-515-5000  
blm\_nv\_ph\_srp  
@blm.gov



Tuscarora  
Field Office

775-753-0200  
blm\_nv\_tu\_srp  
@blm.gov

Wells  
Field Office

775-753-0200  
blm\_nv\_wl\_srp  
@blm.gov

Bristlecone  
Field Office

775-289-1800  
blm\_nv\_bc\_srp  
@blm.gov

Caliente  
Field Office

775-726-8100  
blm\_nv\_ca\_srp  
@blm.gov

Basin and Range  
National Mon.

775-726-8100  
blm\_nv\_ca\_srp  
@blm.gov

Las Vegas  
Field Office

702-515-5000  
blm\_nv\_lv\_srp  
@blm.gov

Red Rock/Sloan  
Field Office

702-515-5350  
blm\_nv\_rr\_srp  
@blm.gov

Please contact the appropriate BLM Field Office to schedule your pre-application consultation.