



U.S. Department of the Interior  
Bureau of Land Management

---

# Navigating the Path to Wild Horse and Burro Grant Funding

---







# Agenda

- Panelist Introductions
- Mission and Goals
- Tentative Plan for Fiscal Year 2024
- Applying for Grants - Public Purpose and Substantial Involvement
- Off-Range Priorities
- On-Range Priorities
- Research Priorities
- Summary of SAM Requirements
- Questions





# Panelists

Webinar Host: Jason Lutterman, Public Affairs Specialist

Panelists:

Noël Miller, Grants Policy Analyst

Andrew Clark, Grants Policy Analyst

Paul McGuire, Deputy Division Chief for Off-Range

Scott Fluer, Acting Division Chief and Deputy Division Chief for On-Range

Dr. Paul Griffin, Research Coordinator



# Mission and Goals

- The Bureau of Land Management's mission is to manage wild horses and burros as part of a "thriving natural ecological balance on public lands" as envisioned by the Wild Free-Roaming Horses and Burros Act.
- Our goal is to manage and protect healthy wild horses and burros on healthy public lands.
- Good, effective partnerships are essential to accomplishing our mission and meeting our goals.







# Tentative Plan for Fiscal Year 2024

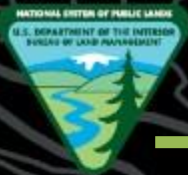
The BLM anticipates releasing three separate "**Notice of Funding Opportunity**" throughout Fiscal Year 2024. Dates provided below are tentative and subject to change. More information for opportunities in each category will be available when each notice is finalized and released to the public.

## Announcements

- Off-Range Projects: October 2023
- Research Projects: November 2023
- On-Range Projects: December 2023

Eligibility: Similar to previous notices, these funding opportunities will be open to non-profit and government organizations, Tribes and universities.





U.S. Department of the Interior  
Bureau of Land Management

# Public Purpose and Substantial Involvement



Noël Miller, Grants Policy Analyst  
Andrew Clark, Grants Policy Analyst





# Principal Purpose Test

## Acquisition

Direct BLM Benefit

Purchase/Lease/Barter of  
property or services

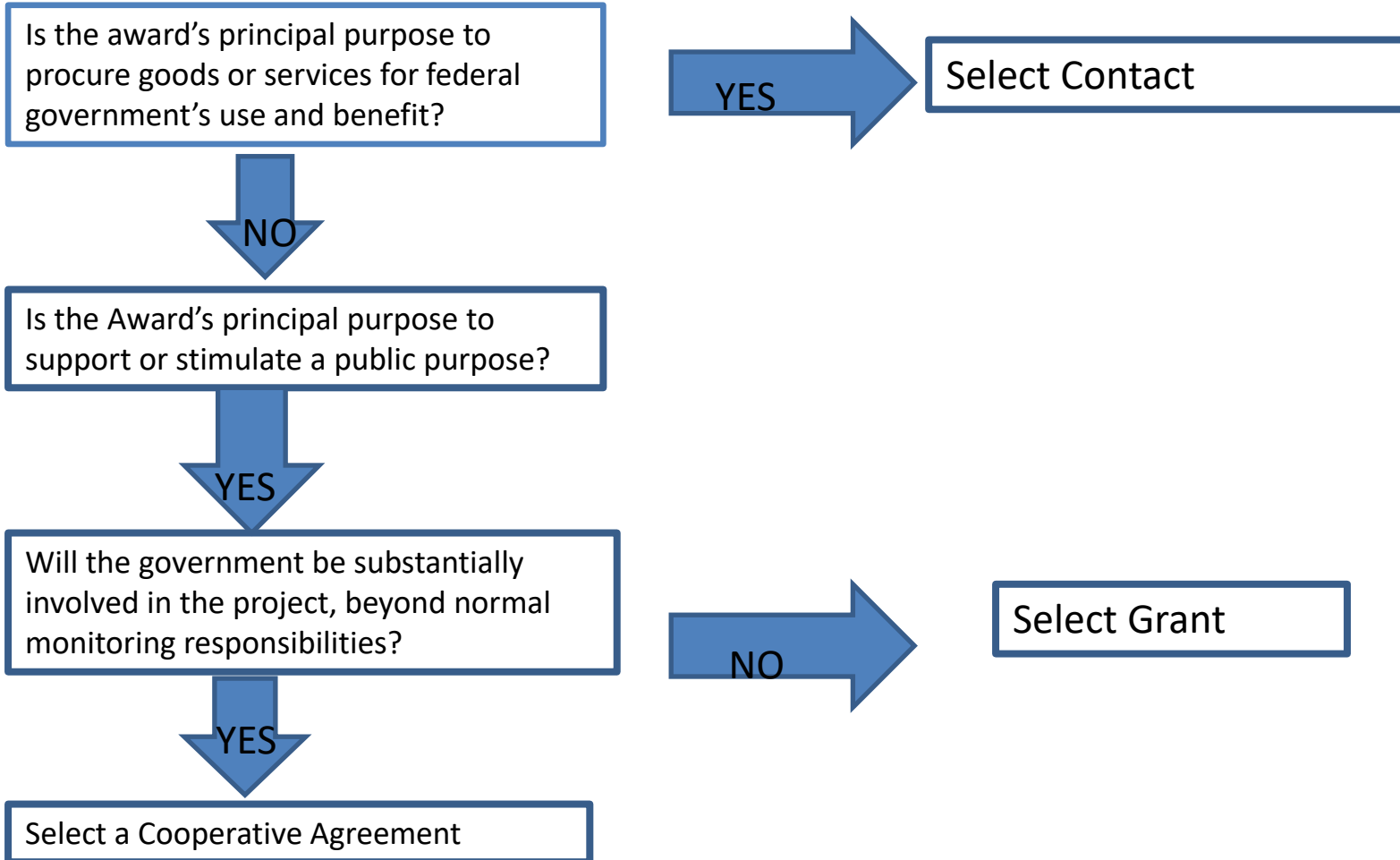
## Financial Assistance

Direct Public Benefit

Transfer anything of value to  
a Recipient to accomplish a  
public purpose



# Award type decision tree







# Definition of Financial Assistance

## Public Purpose

- Support
- Stimulation

## Grants

- BLM does not have Grant Authority

## Cooperative Agreements

- BLM Substantial Involvement Required.



# What is Public Purpose?

## Direct Public Benefit

Provide sufficient explanation as to HOW the project accomplishes a Public Purpose

## Indirect Benefit

Primary goals and objectives of the project CANNOT be for the DIRECT benefit of BLM





# What does Direct Public Benefit mean?

Beyond BLM's Mission

New Scientific  
knowledge for scientific  
community outside  
BLM

Promotes greater  
public and private  
participation in  
environmental  
stewardship

Opportunities for youth  
to become involved  
and learn outside the  
classroom

Create/Increase the  
general public's  
understanding of  
resources on and off  
Public Lands



# What does Indirect BLM Benefit mean?

## BLM Indirect

- Improvement, an advantage, or an enhancement to BLM resource management/resource education/invasive species management/environmental education

## Best Effort

- Scientific report may not get completed or a range fence may not get finished
- If an attempted was made project successful
- BLM staff may have to complete any remaining tasks





# BLM/DOI Solicitor's approved Public Purpose Statements

1. The project engages recipients, partners communities, and/or visitors in shared environmental stewardship.
2. The project promotes greater public and private participation in historic preservation programs and activities. The project builds resource stewardship ethics in its participants.
3. The information, products and/or services identified or developed by this project will be shared through a variety of strategies to increase public awareness, knowledge and support for historic preservation and stewardship of the nation's cultural and historic heritage.
4. The principal purpose of the project is to support the Government's objective to provide opportunities for youth to learn about the environment by spending time working on the projects on BLM land. The BLM receives and indirect benefit of completing conservation projects.
5. The project motivates its youth participants to become involved in the natural, cultural and/or historic resource protection of their communities and beyond. Students gain "real world" or hands-on experience outside the classroom of natural, cultural and/or historic resource projects.
6. The scientific community and/or researchers external to BLM gains by new knowledge provided through research and related results dissemination of natural, cultural and/or historical resource information.
7. The project assists in the creation, promotion, facilitation, and/or improvement of the public's understanding of natural, cultural, historic, recreational, and other aspects of areas such as ecological conservation areas, and state and local parks.



# Developing a Public Purpose Statement

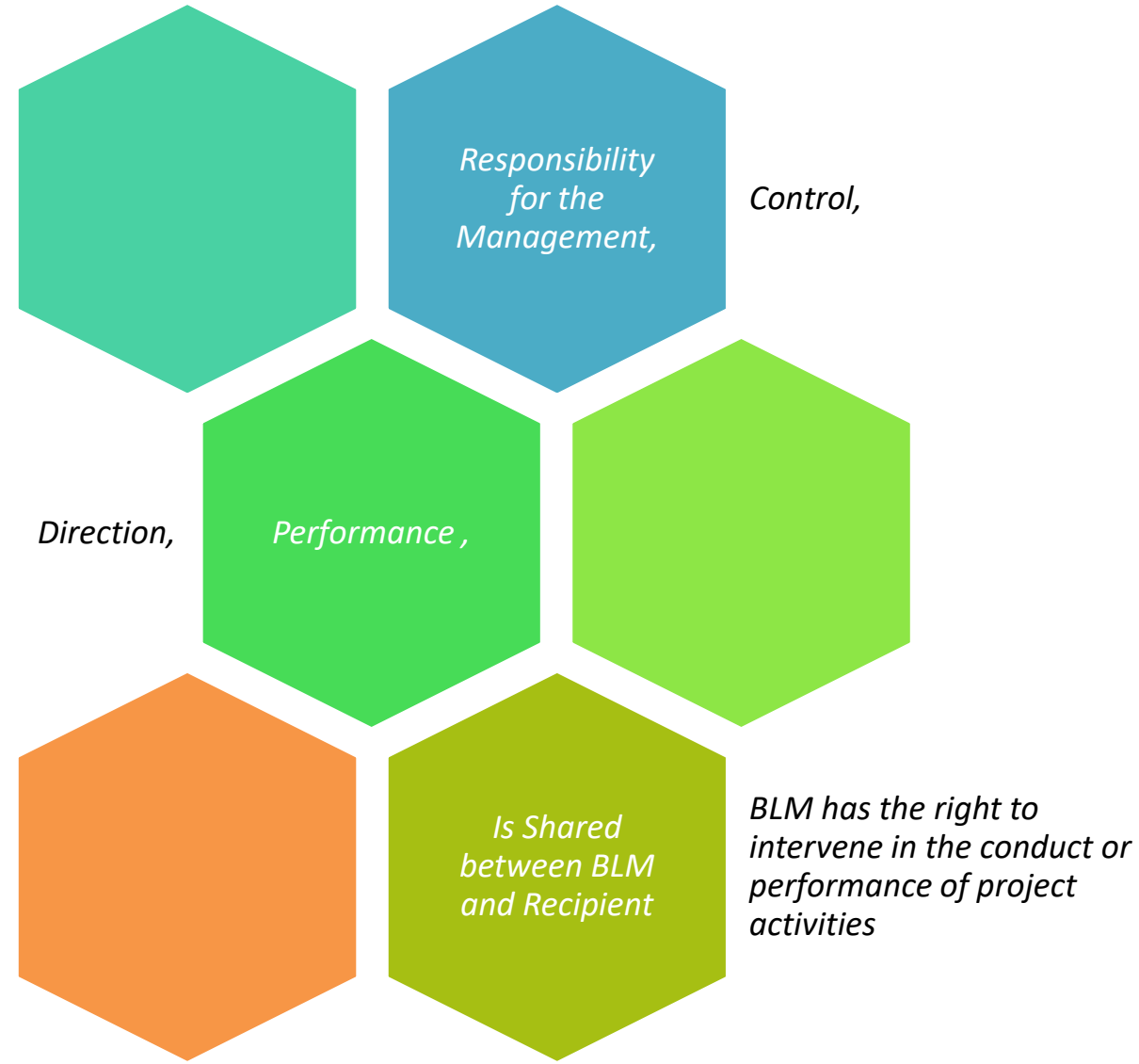
Answer the following questions to help you develop a public purpose statement.

1. What improvement, advantage, enhancement will this project indirectly benefit a BLM program?
2. What benefits will the Public (Interns, the non-profit, the University) receive through this project with BLM?
3. How will this project benefit the general public health, education, enjoyment, and welfare?
4. How will this project help protect the public interests in ecosystem management?
5. How will the resulting published information (documents, data, maps, research reports, ect.) assist the public?
6. How will the project advance knowledge within the larger scientific and general public communities?





# Substantial Involvement Exists When





# Substantial Involvement does not include:

Suspension or termination of the award

Technical Assistance or guidance provided to a Recipient if the Recipient is not required to follow

Technical Assistance or guidance which pertains to the administrative requirements

Conducting Site Visits/Evaluating progress reports

Temporary intervention in unusual circumstances to correct administrative deficiencies

Ensuring compliance with legislative, regulatory, an administrative requirements

Reviewing Performance after completion





# Developing a Substantial Involvement Statement

Answer the following questions to help you develop a Substantial Involvement statement.

1. Will there be a BLM liaison? What specific duties are assigned to them?
2. Will BLM staff be completing a general orientation/safety briefing?
3. Will BLM staff be providing the participants any training/certifications?
4. How will BLM staff be participating in the scheduled activities?
5. Will BLM staff be providing data?
6. How will BLM work side by side with the Recipient to complete the activities listed in the agreement?



# Developing a Substantial Involvement Statement

Answer the following questions to help you develop a Substantial Involvement statement.

1. Will there be a BLM liaison? What specific duties are assigned to them?
2. Will BLM staff be completing a general orientation/safety briefing?
3. Will BLM staff be providing the participants any training/certifications?
4. How will BLM staff be participating in the scheduled activities?
5. Will BLM staff be providing data?
6. How will BLM work side by side with the Recipient to complete the activities listed in the agreement?





## Off-Range Branch

The Wild Horse and Burro Program Off-Range Branch is primarily responsible for ensuring the health and welfare of wild horses and burros that were removed from public lands while under BLM care, including:

- Advising the division chief and agency leadership on off-range management matters
- Managing contracts, agreements and policies for off-range operations
- Coordinating the placement of animals into private care through adoptions, sales, and transfers
- Ensuring the welfare of adopted animals
- Building partnerships and relationships with external organizations



# Off-Range Priorities

The BLM's priorities for off-range projects to receive grant funding in Fiscal Year 2024 include, but are not limited to:

- Establish and conduct programs to care for, train, and facilitate the placement of wild horses and burros into private care and, in so doing, promote public understanding and support for the Program's core mission of managing wild horses and burros on public lands in a balanced and ecologically sustainable way.
- Conduct compliance inspections of adopted animals where BLM authority is not required for complaint or issues of abuse.
- Coordinate educational and outreach efforts to promote public awareness of the unique qualities, trainability, and pride of owning wild horses or burros.





# Off-Range Responsibilities

**BLM may be responsible for the following, if applicable, to proposed projects:**

- Complete required NEPA documents.
- Provide law enforcement support to assure safe operations of project.
- Provide required training including Comprehensive Animal Welfare Program (CAWP), compliance, etc.
- Transportation of animals to project area and/or designated pick-up locations.
- Veterinary care for animals.
- Other inputs as required to advance project objectives.

**Recipient may be responsible for the following, if applicable to a proposed project:**

- Temporary facility to care for animals which may include water, pasture and/or supplemental feeding for projects related to fertility control applications, adoption/sale events and training of wild horses and burros.
- Labor to construct temporary facility for holding animals.
- Transportation of animals and staff to and from project area while performing project duties.
- Other inputs as required to advance project objectives.

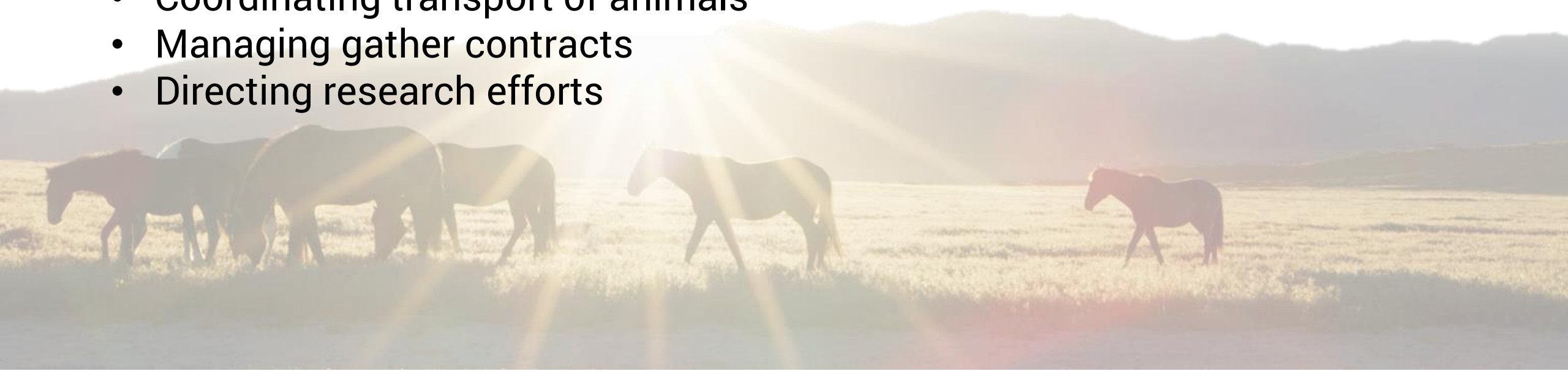




# On-Range Branch

The Wild Horse and Burro Program On-Range Branch is primarily responsible for coordinating management of wild horses and burros on BLM public lands to maintain a thriving natural ecological balance, including:

- Advising the division chief on on-range management matters
- Developing and maintaining the annual gather and survey schedules
- Coordinating transport of animals
- Managing gather contracts
- Directing research efforts







# On-Range Priorities

The BLM's priorities for on-range projects to receive grant funding in Fiscal Year 2024 include, but are not limited to:

- Implementation of field-darting programs for fertility control application (record-keeping, animal identification/tracking, etc.)
- Conducting monitoring of rangeland and animal health on public lands
- Construction or reconstruction of range improvements to support wild horse and burro herd management, including vegetation treatments, water developments, fencing, cattleguards and/or seeding
- Create programs to increase public awareness and education of wild horses and burros and their habitat







# On-Range Responsibilities

## **BLM may be responsible for the following, if applicable, to proposed projects:**

- Supplying fertility control agent (vaccination, drug, etc.).
- Fertility control agent conveyance mechanism (i.e., darts, jabsticks, etc.). This may or may not include dart guns.
- Identification and marking of treated animals.
- Complete required NEPA documents.
- Provide law enforcement support to assure safe operations of project.
- Provide required training including Comprehensive Animal Welfare Program (CAWP), fertility control application techniques, etc.
- Transportation of animals for project.
- Veterinary care for animals.

## **Recipient may be responsible for the following, if applicable to support a proposed project:**

- A temporary facility to care for animals which may include water, pasture and/or supplemental feeding for projects related to fertility control applications
- Labor to construct temporary facility for holding animals.
- Transportation of staff to and from project area while performing project duties.
- Other inputs as required to advance project objectives.



# Research

The BLM strives to use the best available science as part of the agency's efforts to ensure that self-sustaining populations of wild horses and burros can thrive on healthy public rangelands.

The **BLM's 2021 Wild Horse and Burro Program Strategic Research Plan** describes the BLM's motivation to support related research, and details the BLM's highest priorities.

**Links to the 2021 strategic research plan are at:**

[BLM.gov/whb/science](https://www.blm.gov/whb/science)

Federal research agencies will be invited to apply through a parallel 'request for proposals,' but all applications will be reviewed by the same review process.





# Research Priorities

The BLM's priorities for on-range projects to receive grant funding in Fiscal Year 2024 will likely include, but are not limited to:

- Development and/ or testing of new or improved long-lasting fertility control methods for mares, and/ or testing the application of existing methods in a way that provides essential information for successful application of long-lasting fertility control methods for mares, and/ or testing and documentation of the effects of new or existing long-lasting fertility control methods for mares.
- Examination of the relationships between wild horses or wild burros (WHB) and their environment, with potential special attention paid to effects of climate change, or effects of wild horses or burros on ecosystem resilience to climate change.
- ***New in FY24:*** Research studies that would further improve WHB aerial censuses; develop new insights into WHB genetics; improve health, handling, and welfare; identify factors that improve WHB adoption rates; or address human dimensions of WHB management.





# Research Responsibilities

Research applicants will need to explain the proposed research projects using the template that is called 'Attachment A' on the BLM's Wild Horse and Burro program research web page.



## **BLM may be responsible for the following, if applicable, to proposed projects:**

- Routine animal capture, handling, veterinary care, and transportation that is unrelated to research
- Complete required NEPA documents.
- Provide required training including Comprehensive Animal Welfare Program (CAWP), fertility control application techniques, compliance, etc.
- Collaborative operations, where and when logistically allowable

## **Recipient may be responsible for the following, if applicable to a proposed project:**

- Frequent communication with the BLM before and during the project
- Additional elements of animal handling and are that are unique to research treatments
- Labor to complete research studies, analyses, publications, and related tasks
- Transportation to and from project area while performing project duties.
- Other required tasks unique to the proposed research study



# Registering with SAM

The System for Award Management (SAM) is a government-wide registry for vendors doing business with the Federal government, and SAM registration requires annual renewal. SAM centralizes information about grant recipients and provides a central location for grant recipients to change organizational information. Grants.gov uses SAM to establish roles and IDs for electronic grant applicants.

SAM registration is not completed on the Grants.gov website. Once the SAM Registration is complete, you must return to Grants.gov to continue registration.

## How to Register with SAM

- Visit the System for Award Management website at <http://www.sam.gov/>.
- Follow SAM's online instructions in their Help tab to create a user account and register or update your entity's SAM account.

*Note: Once your SAM registration is active, you can return to Grants.gov and complete registration. It takes 24 hours for SAM Registration to activate after SAM has received all required information from registrants. SAM registration must be renewed annually. If you are updating or renewing your registration, it takes approximately 24 hours to activate.*





# State Lead/HQ Contacts

Prior to submitting an application, applicants are encouraged to contact the wild horse and burro program lead at the BLM state, district or field office where the work is proposed to take place to discuss proposed projects in order to determine eligibility under the BLM priorities and criteria described in the NOFO.

Contacts for state leads (who can redirect to district or field offices) are provided to the right.

State Office	Name	Contact
Arizona	John Hall	<a href="mailto:jahall@blm.gov">jahall@blm.gov</a>
California	Amy Dumas	<a href="mailto:adumas@blm.gov">adumas@blm.gov</a>
Colorado	Lynae Rogers	<a href="mailto:lbrogers@blm.gov">lbrogers@blm.gov</a>
Eastern States	Krystal Johnson	<a href="mailto:kfjohnso@blm.gov">kfjohnso@blm.gov</a>
Idaho	Chris Robbins	<a href="mailto:clrobbins@blm.gov">clrobbins@blm.gov</a>
Montana-Dakotas	Amy Waring	<a href="mailto:awaring@blm.gov">awaring@blm.gov</a>
Nevada	Ruth Thompson	<a href="mailto:rthompso@blm.gov">rthompso@blm.gov</a>
New Mexico (TX, OK, KS)	Pat Williams	<a href="mailto:pbwillia@blm.gov">pbwillia@blm.gov</a>
Oregon-Washington	Emily Lent	<a href="mailto:elent@blm.gov">elent@blm.gov</a>
Utah	Gus Warr	<a href="mailto:gwarr@blm.gov">gwarr@blm.gov</a>
Wyoming	June Wendlandt	<a href="mailto:jwendlan@blm.gov">jwendlan@blm.gov</a>
National Office	Information Center	<a href="mailto:wildhorse@blm.gov">wildhorse@blm.gov</a>



# Live Q&A

Additional programmatic questions can be submitted to [wildhorse@blm.gov](mailto:wildhorse@blm.gov) with the subject “Notice of Funding Opportunity Question”

Research-related questions can be submitted to [BLM\\_HQ\\_WHBResearch@blm.gov](mailto:BLM_HQ_WHBResearch@blm.gov)

## Panelists:

Noël Miller, Grants Policy Analyst

Andrew Clark, Grants Policy Analyst

Paul McGuire, Deputy Division Chief for Off-Range

Scott Fluer, Acting Division Chief and Deputy Division Chief for On-Range

Dr. Paul Griffin, Research Coordinator

