



Data Considerations for Managing Wild Horses and Burros in an Uncertain Future

Part of Drought, Wild Horses and Burros Discussion

Presented by Dr. Matt Reeves;
*USDA, Forest Service, Rocky Mountain
Research Station, Missoula, MT*
June, 29 2023



Overview



- Discuss key resilience factors
- Approaches in the USFS
- Looking at climate change

POINT!

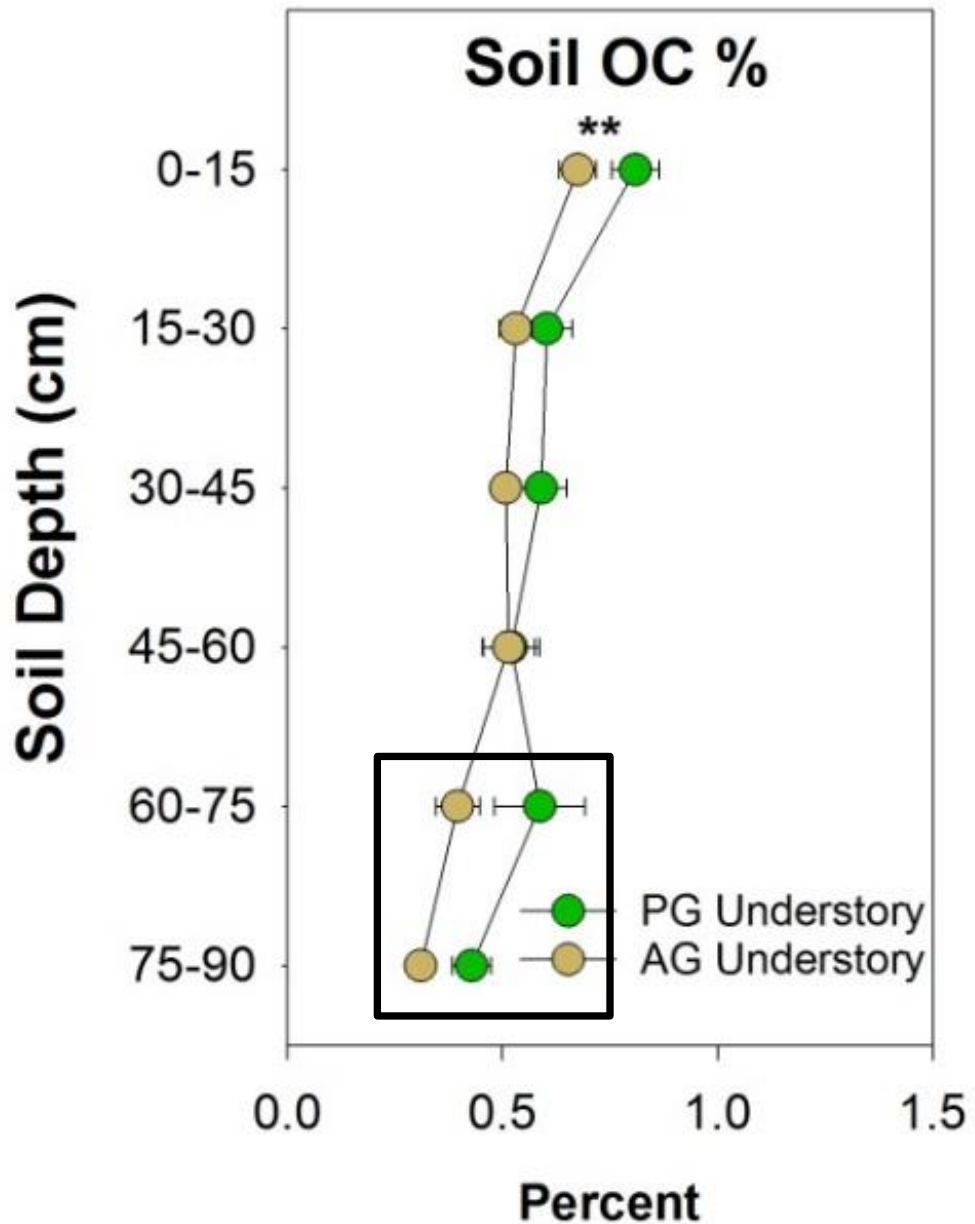
Consistent approaches to evaluating past and future trends



Resilience?

- Which site will be more resilient to drought
 - Why?

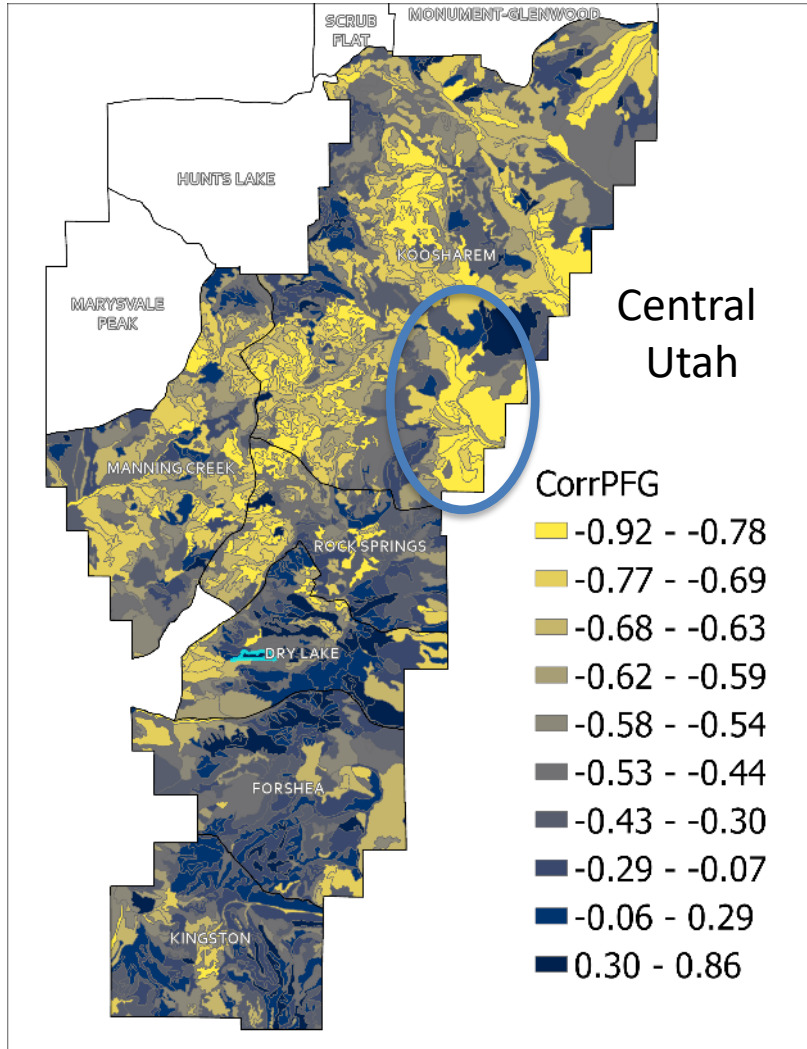




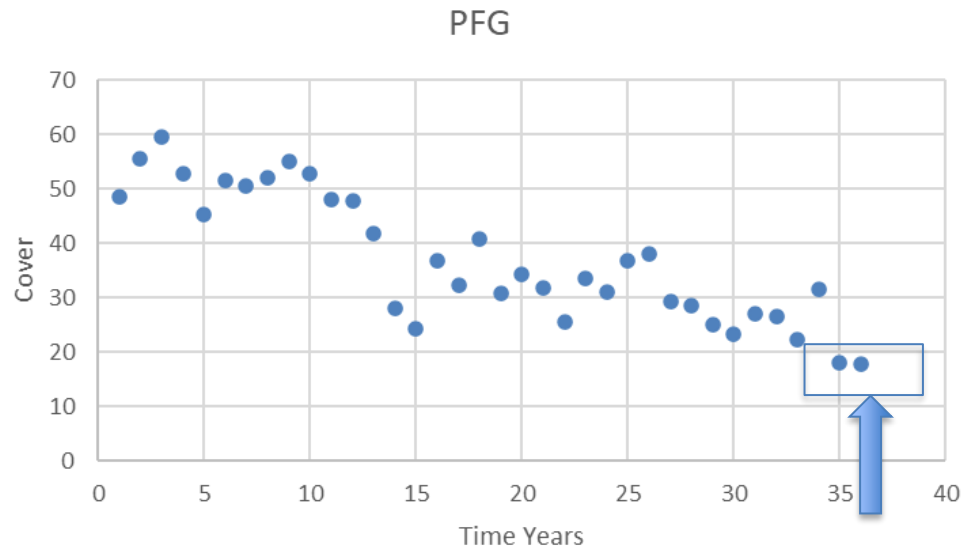
SOC = resiliency

Courtesy:
Ben Rau

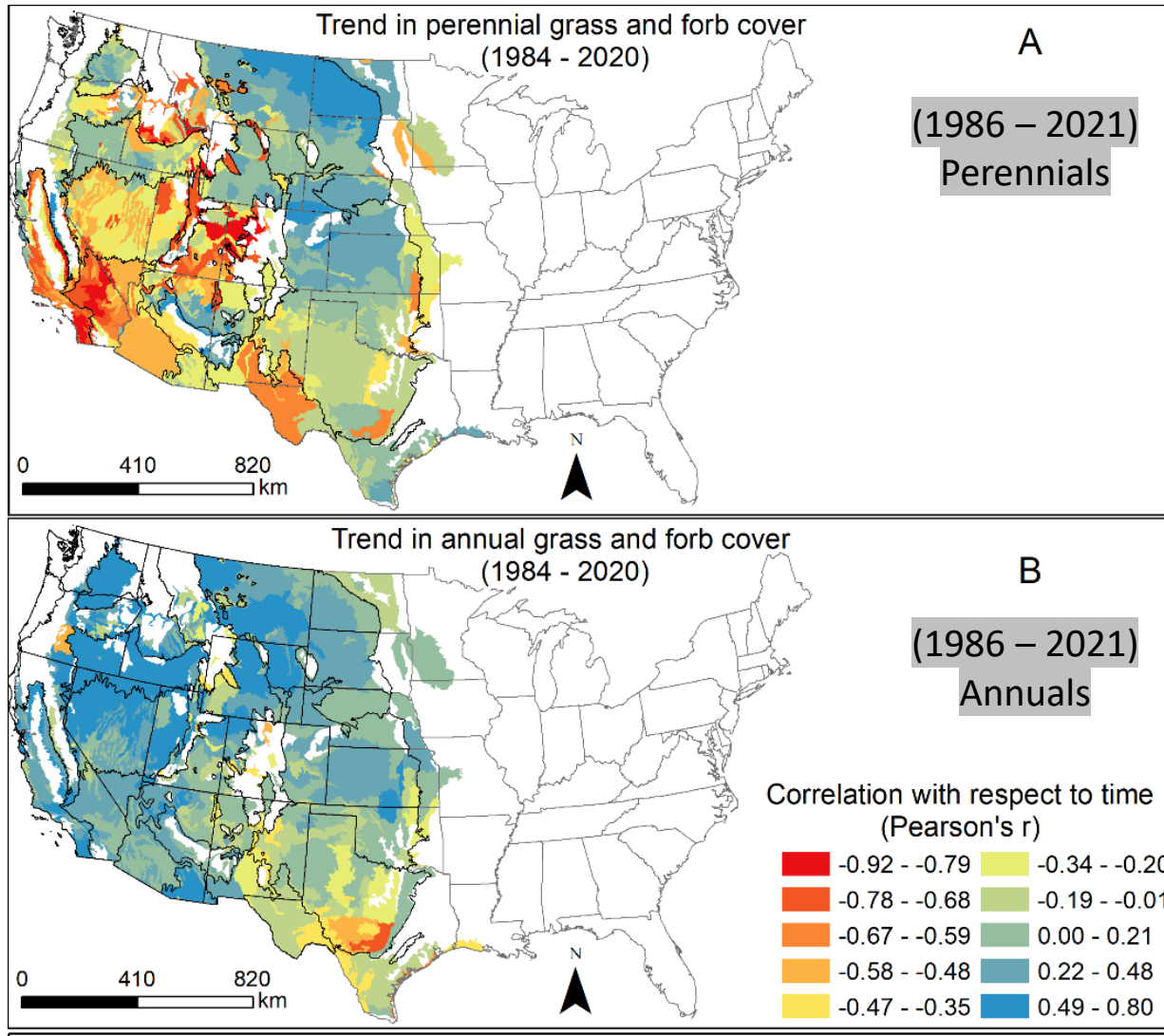
Resilience?



Trend in perennial forb and grass cover
Why?



Where have we been?



Life forms
(1986 - 2021)

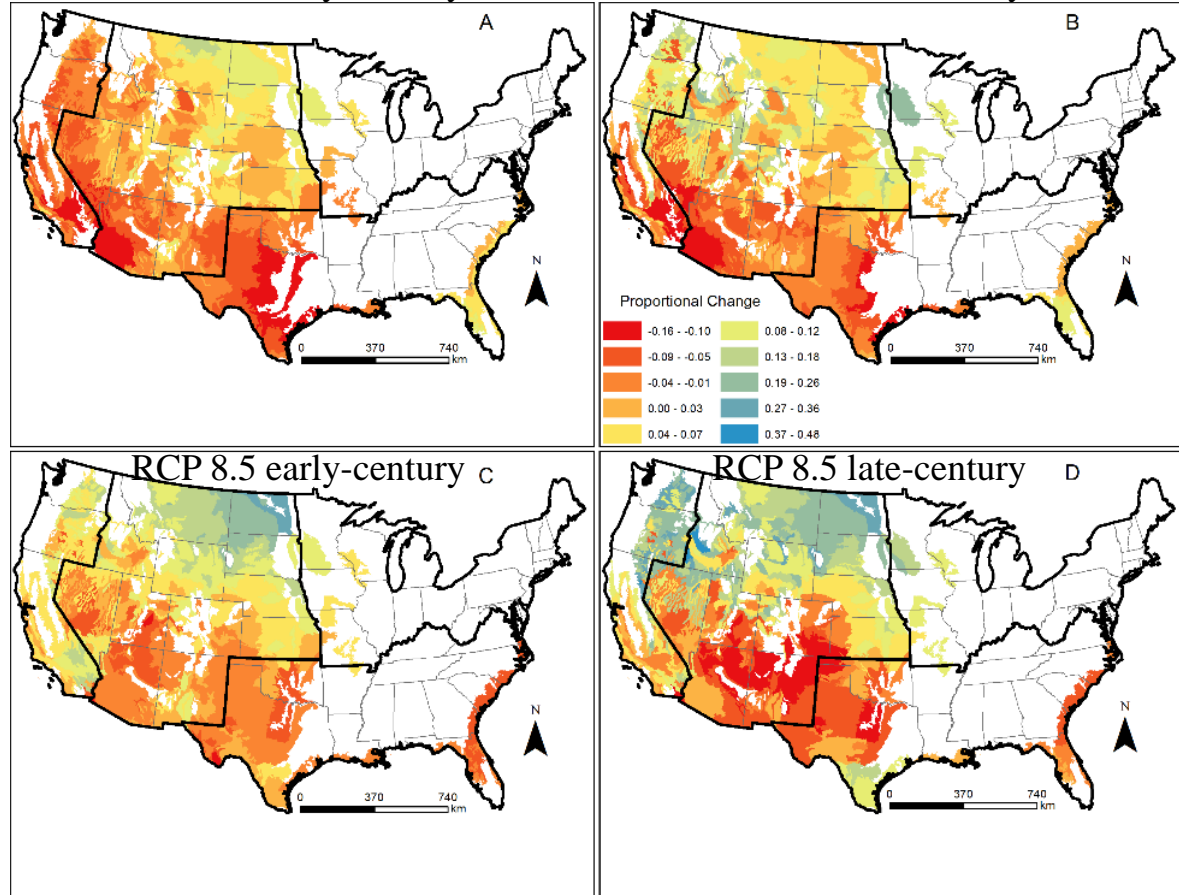
Where are we headed?



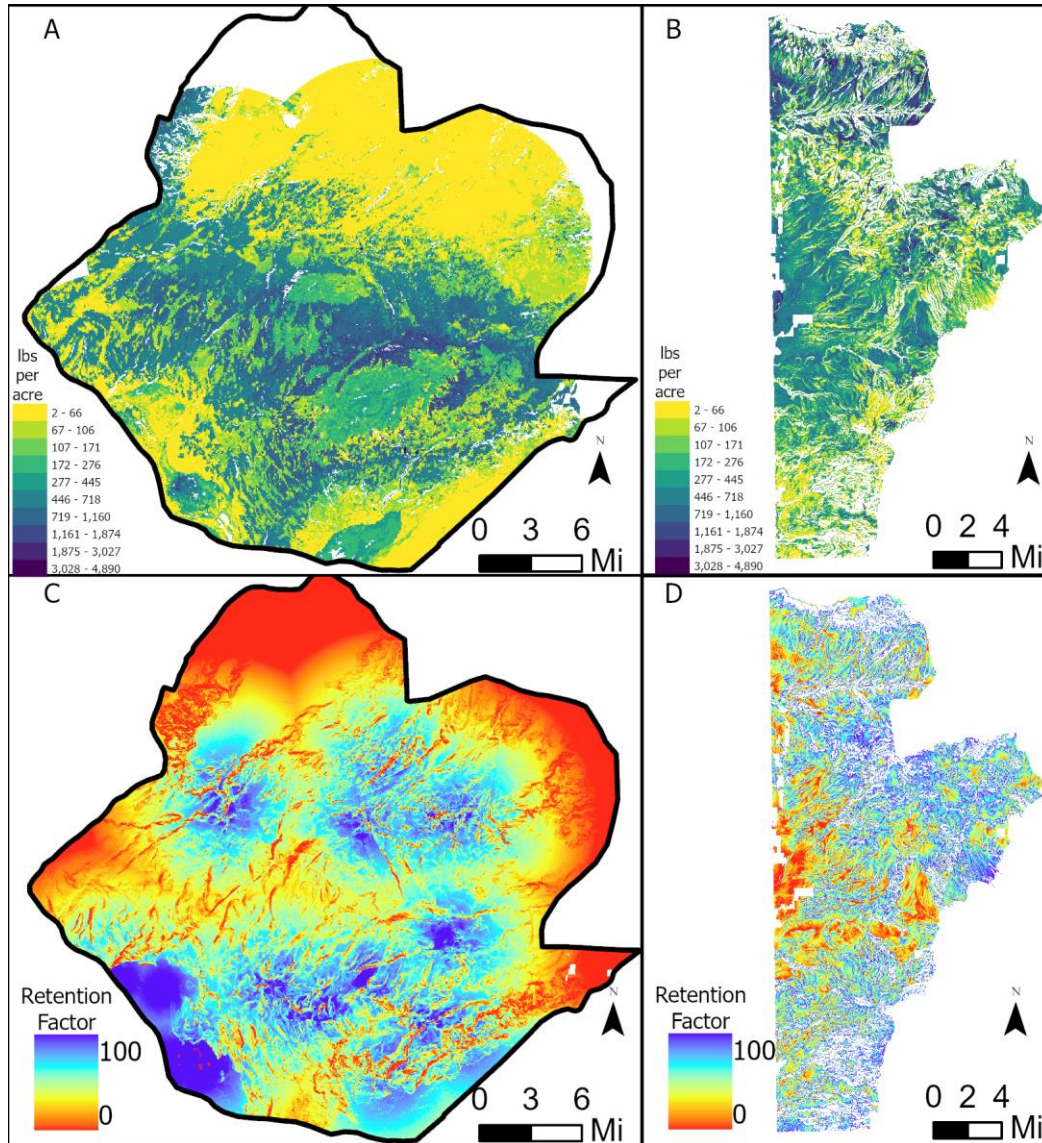
- **Higher yield in north / reverse in south**

RCP 4.5 early-century

RCP 4.5 late-century



Relationship to WHB?

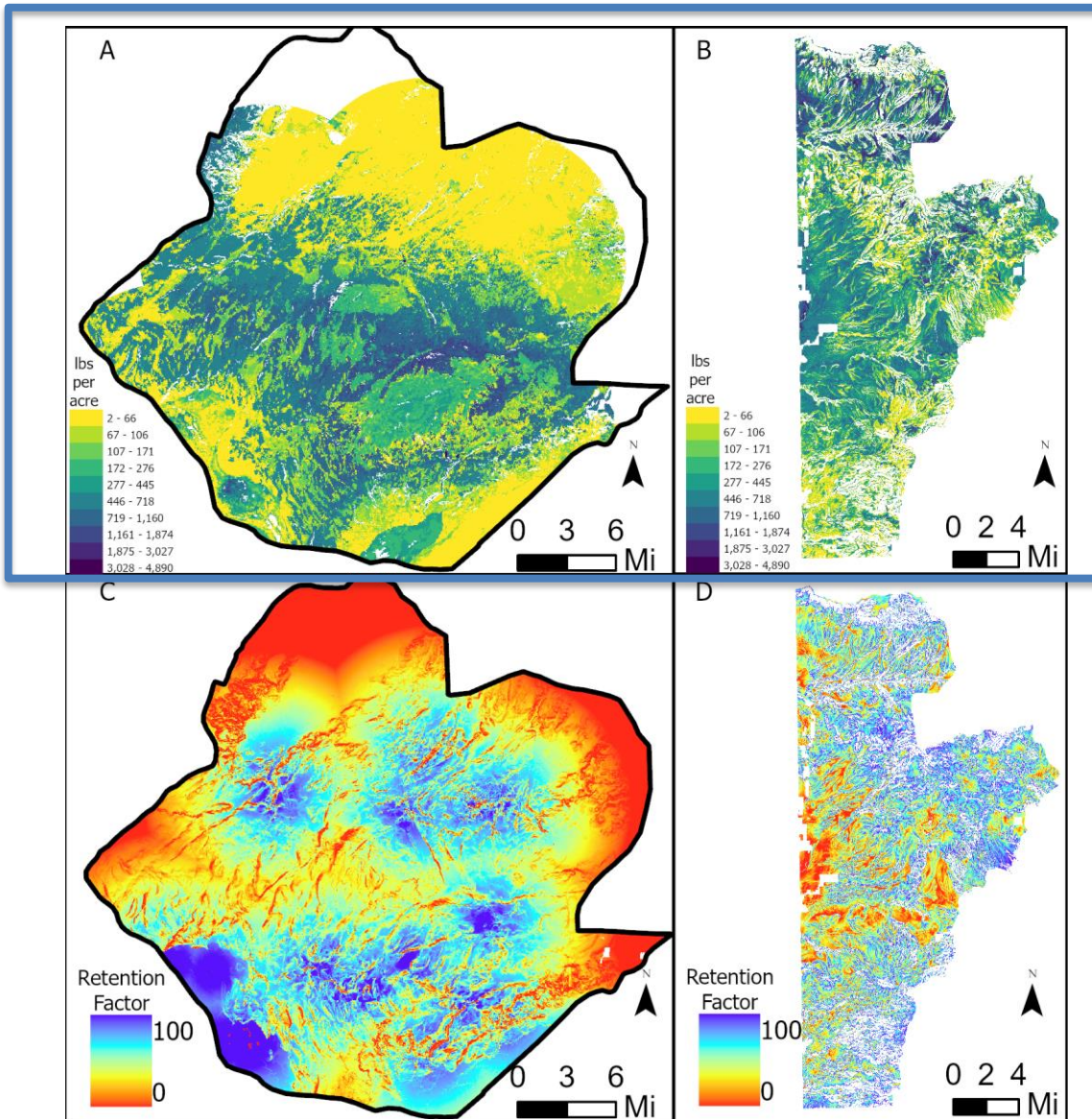


USFS Approach:

- 1) Automated stocking rate/capacity (AML)
- 2) NEPA assessment (change infrastructure: "What if")
- 3) Climate change impacts

Relationship to WHB?

Available
forage



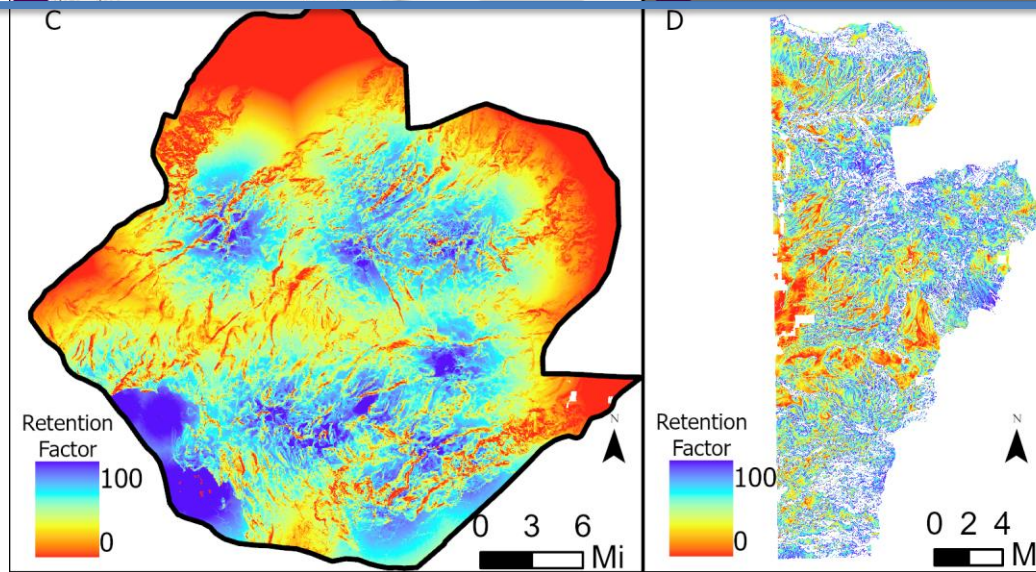
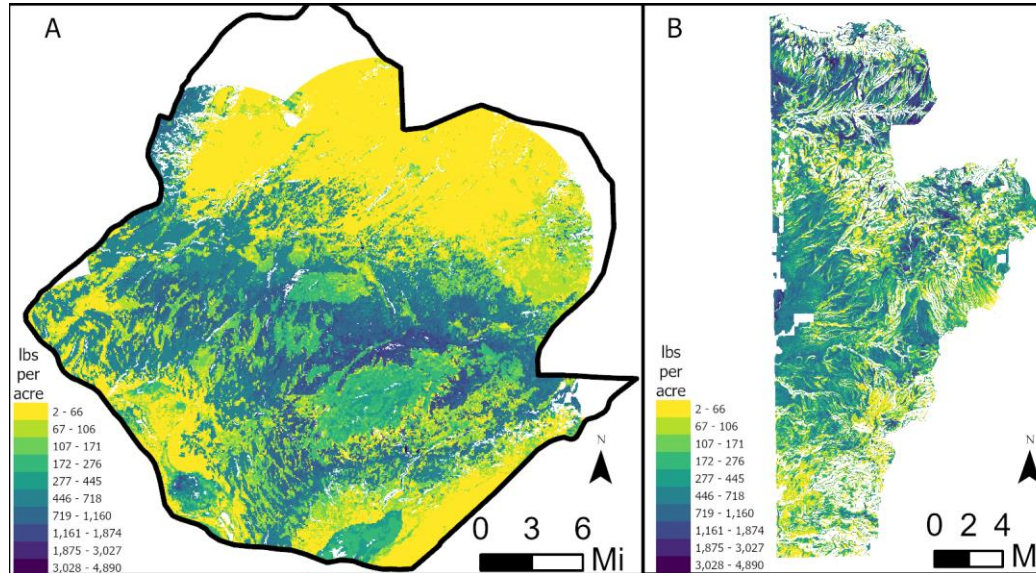
Above avg.

Avg.

Below Avg.

Project trend

Relationship to WHB?



Landscape effects

Slope

Water

Shrub use

Closing thoughts

- Consistent approaches to impacts on forage + AML (*quantity + quality*);
 - Past
 - Present
 - Future
- Variability and extremes are the best descriptors of climate change expectations:
 - Drought more common, last longer, more intense
- Data we can all agree on helps create better dialogue and improved decision making.

