



LaBarge



Beaver dam analog to reduce incision and improve water quality.

The Bureau of Land Management is infusing \$161 million for ecosystem restoration and resilience on the nation's public lands, as part of the Biden-Harris Administration's Investing in America agenda. The proposed work will focus on 21 "Restoration Landscapes" across 11 western states, restoring public lands, strengthening communities and local economies, advancing climate resilience and furthering our commitment to Tribal collaboration and partnership.

Conservation success in the LaBarge Restoration Landscape rests on significant collaboration and cross fence-line partnership. Here, people are working together to manage for wildlife habitat and migration corridors and conserving and restoring priority habitat for the greater sage-grouse. BLM investment will reinforce these partnerships and work to remove invasive species, control erosion and protect water sources.

This effort will complement \$870,000 of funding from the Bipartisan Infrastructure Law.



Blown-out and incised creek in need of restoration.

Restoration Features



Create Climate Resilience



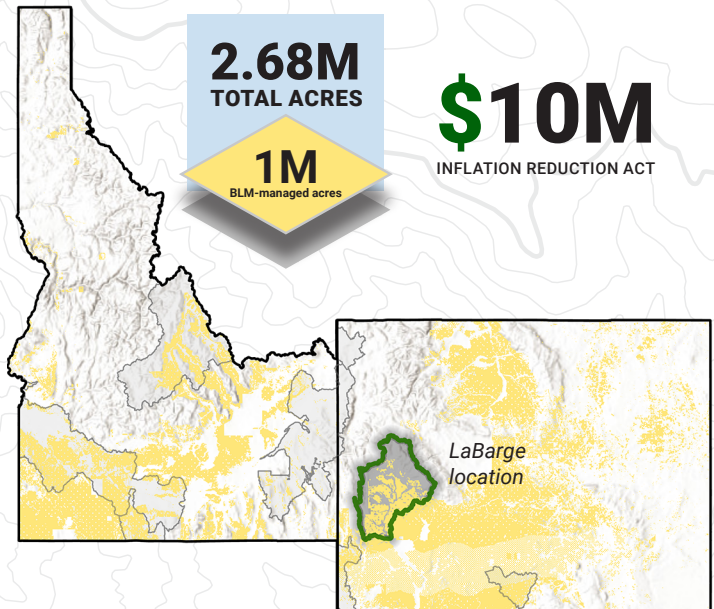
Protect native plants & remove invasive species



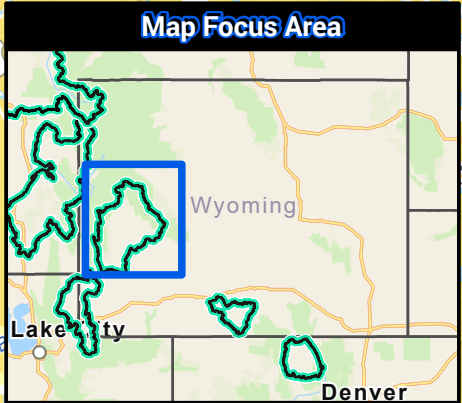
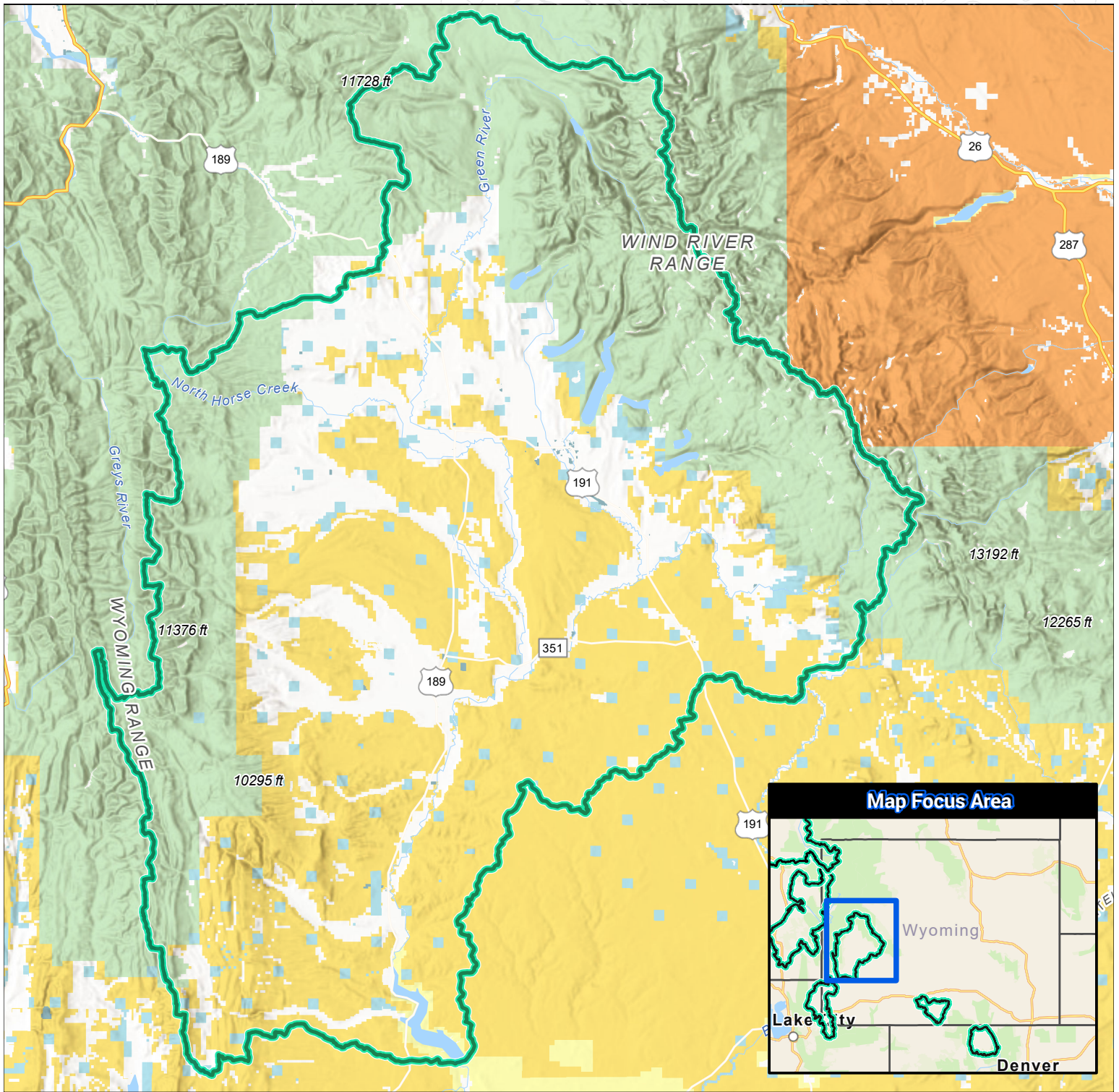
Restore Streams/Hydrology



Conduct Fire/Fuels Treatments



LaBarge Restoration Landscape



- | | | | |
|-----------------------------|---------------------------------|--------------------------------|--------------------|
| Restoration Landscape | Bureau of Land Management (BLM) | US Fish and Wildlife (USFW) | State |
| U.S. State Boundary | National Park Service (NPS) | Bureau of Reclamation (USBR) | Local |
| Department Of Defense (DOD) | US Forest Service (USFS) | Bureau of Indian Affairs (BIA) | Private or Unknown |