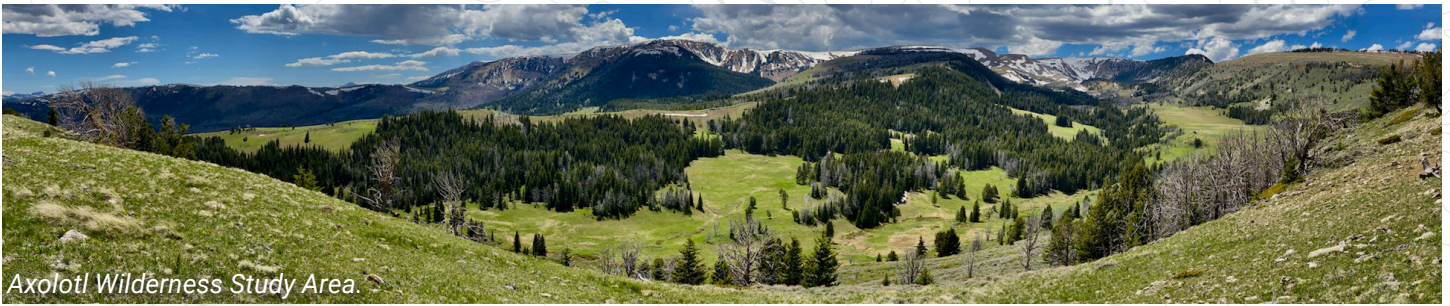




U.S. Department of the Interior
Bureau of Land Management

RESTORATION LANDSCAPE

Missouri Headwaters, Southwestern Montana



Axolotl Wilderness Study Area.

The Bureau of Land Management is infusing \$161 million for ecosystem restoration and resilience on the nation’s public lands, as part of the Biden-Harris Administration’s Investing in America agenda. The proposed work will focus on 21 “Restoration Landscapes” across 11 western states, restoring public lands, strengthening communities and local economies, advancing climate resilience and furthering our commitment to Tribal collaboration and partnership.

Bridging two of the West’s iconic landscapes – the Greater Yellowstone and the Crown of the Continent – this area encompasses high-elevation mountain ranges, expansive sage-steppe and large, productive valleys that serve as a stronghold for wildlife that have disappeared from much of their historic range. This unique ecosystem is home to grizzly bear, westslope cutthroat, Arctic grayling, pronghorn, Greater sage-grouse and whitebark pine. Sagebrush grasslands anchor ecological systems and multi-generational family ranches intermixed with public land that supports vital recreational economies. Investments in restoration today will ensure these systems support people and wildlife alike into the future.

This effort will complement \$400,000 of funding from the Bipartisan Infrastructure Law.

Restoration Features



Create Climate Resilience



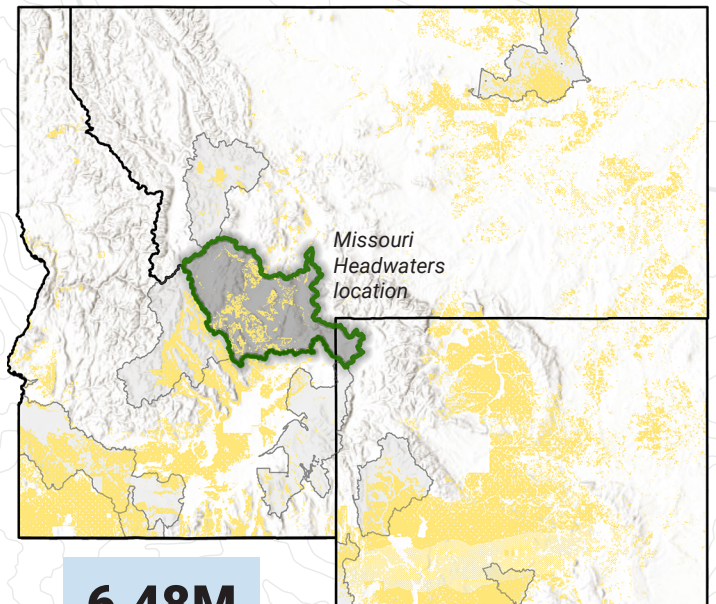
Restore Streams/
Hydrology



Enhance Recreation Experiences



Protect native plants
& remove invasive species



6.48M
TOTAL ACRES

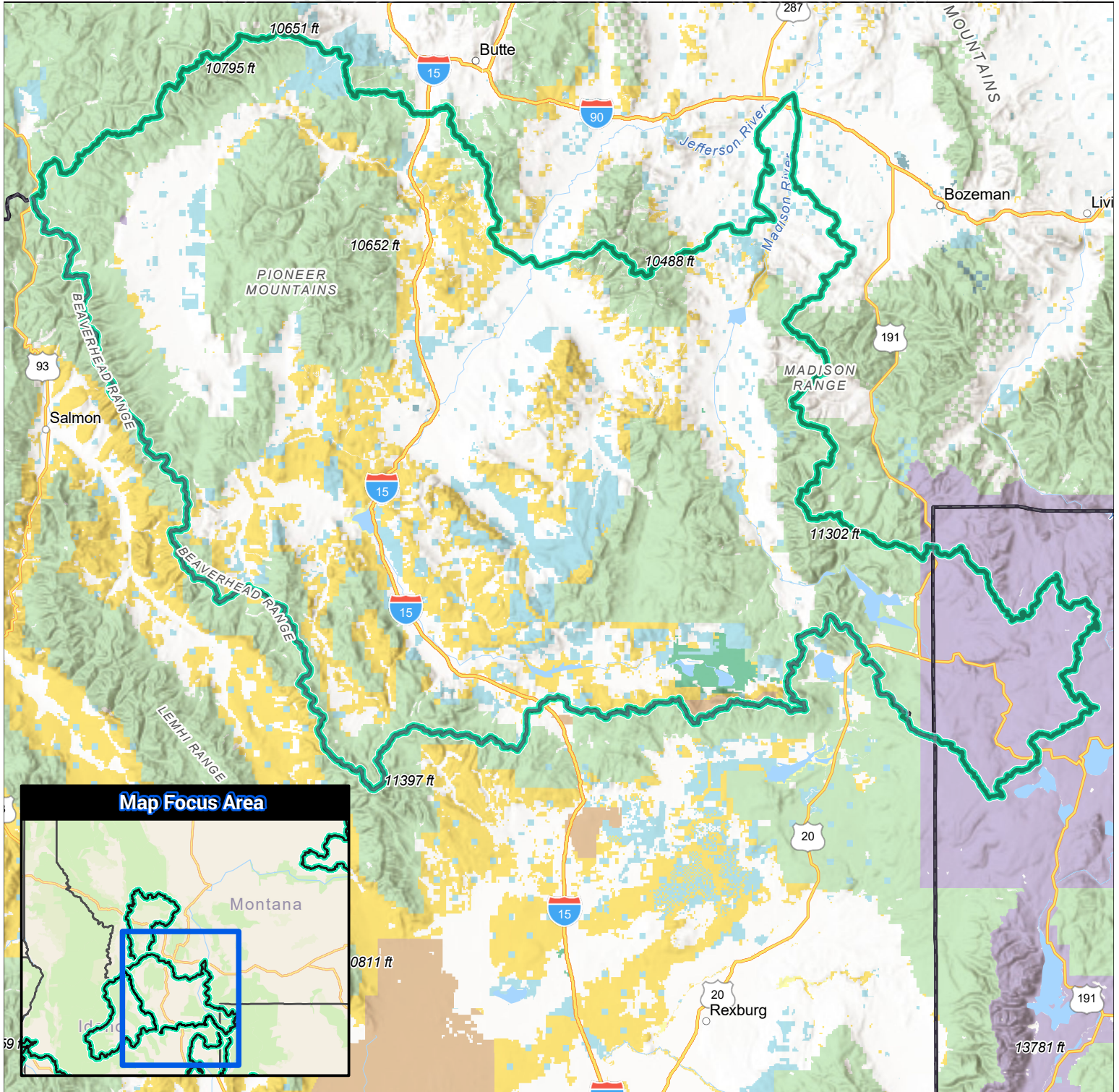
937K
BLM-managed acres

\$9.98M

INFLATION REDUCTION ACT

For more information, visit: www.blm.gov/infrastructure

Missouri Headwaters, Southwest Montana Restoration Landscape



- | | | | |
|-----------------------------|---------------------------------|--------------------------------|--------------------|
| Restoration Landscape | Bureau of Land Management (BLM) | US Fish and Wildlife (USFW) | State |
| U.S. State Boundary | National Park Service (NPS) | Bureau of Reclamation (USBR) | Local |
| Department Of Defense (DOD) | US Forest Service (USFS) | Bureau of Indian Affairs (BIA) | Private or Unknown |