



Color Country Converging



Where ecoregions meet on the Grand Staircase-Escalante National Monument.

The Bureau of Land Management is infusing \$161 million for ecosystem restoration and resilience on the nation’s public lands, as part of the Biden-Harris Administration’s Investing in America agenda. The proposed work will focus on 21 “Restoration Landscapes” across 11 western states, restoring public lands, strengthening communities and local economies, advancing climate resilience and furthering our commitment to Tribal collaboration and partnership.

Stretches of the Mojave Desert, Central Basin and Range, and the Colorado Plateau – each immense ecoregions that help define the West – converge in this landscape, with many plants and wildlife at the edges of their ranges. Plants exist here that are found nowhere else on earth. The scenery and experience invite outdoor adventures, and communities in this part of the state have grown significantly. The BLM, in turn, is investing in recreational services and restoration projects that increase water availability, address habitat fragmentation and restore riparian systems. In addition, work will restore greater sage grouse habitat at the most southernly edge of its range.

This effort will complement \$3.36 million of funding from the Bipartisan Infrastructure Law.

Restoration Features



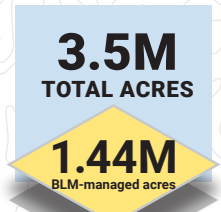
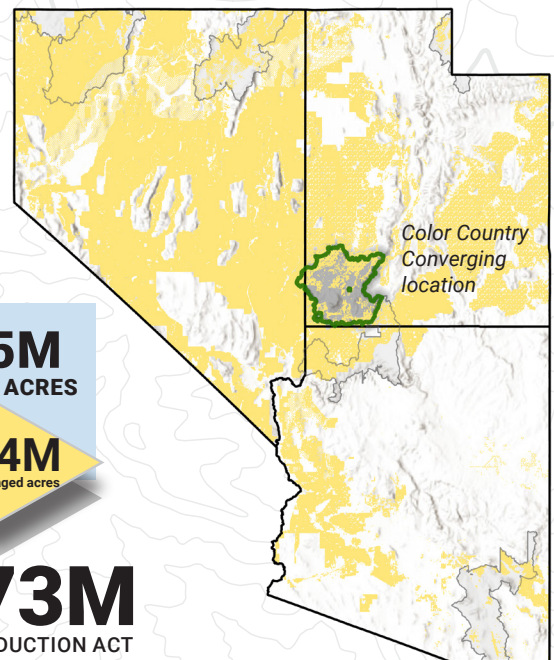
Create Climate Resilience



Restore Riparian/Wetland

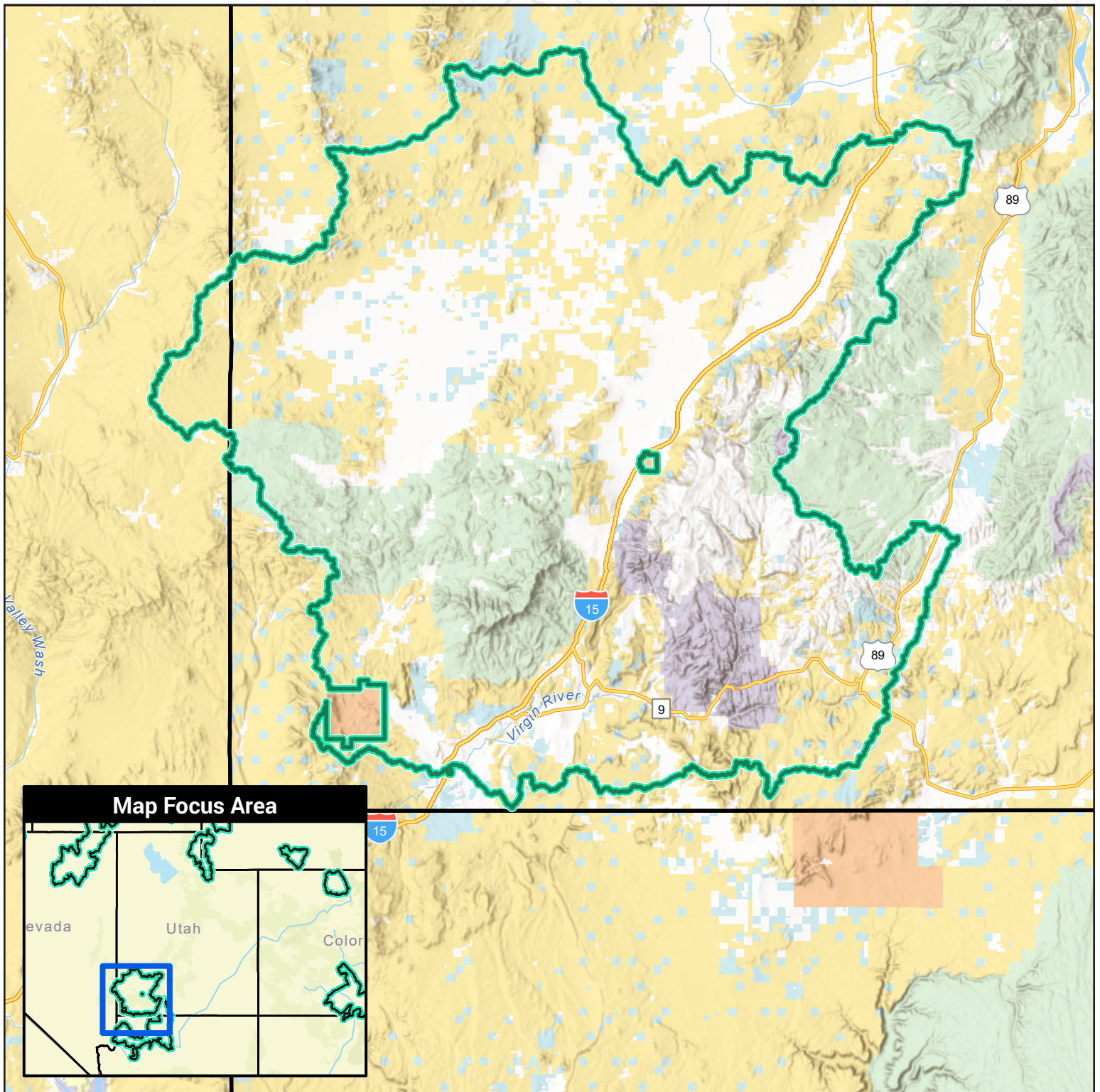


Enhance Recreation Experiences



\$9.73M
INFLATION REDUCTION ACT

Color Country Converging Restoration Landscapes



- | | | | |
|-----------------------------|---------------------------------|--------------------------------|--------------------|
| Restoration Landscape | Bureau of Land Management (BLM) | US Fish and Wildlife (USFW) | State |
| U.S. State Boundary | National Park Service (NPS) | Bureau of Reclamation (USBR) | Local |
| Department Of Defense (DOD) | US Forest Service (USFS) | Bureau of Indian Affairs (BIA) | Private or Unknown |