



COLORADO Uncompahgre

Field Office

Recreation Fee Program Spending & Accomplishment Highlights 2022

Rim Road Staging Area



Aerial view of finished staging area

Construction was completed on new infrastructure to support recreation needs, as well as commercial events. This accessible area tailors towards big groups of visitors and is responsive to local underserved communities' needs (those who might prefer to recreate in big groups close to home and tailgate with family/friends, as well as ride/walk/run fun trails). Seeding naturalized the post-construction footprint, new interpretive kiosks were installed, and traffic counter was placed at the site.

Amount Expended: \$30,000.00

Gunnison Gorge Wilderness



Volunteers hike tipi poles down Ute Trail

Rangers oriented visitors, helped groups select camps, ensured private and commercial compliance, and maintained campsites and facilities. Kiosk inserts were upgraded at trailheads. A new method of paying fees was introduced. A convex mirror was installed on Chukar Road, enhancing the safety of visitors. Ute Park pit toilet was rehabbed, providing a crucial amenity for visitors. Finally, new tipi poles and canvas were installed at the BLM Ranger Station, utilized for river patrols.

Amount Expended: \$50,000.00

Recreation Fee Dollars

They support and enhance:

Recreation fee dollars are an investment in outdoor recreation. Current and future generations benefit as 100% of the funds collected are reinvested in the facilities and services that visitors enjoy, use, and value.

- Maintenance, repair, and facility enhancement related directly to visitor enjoyment, visitor access, and health and safety
- Interpretation, visitor information, visitor service, visitor needs assessments, and signs
- Habitat restoration directly related to wildlife- dependent recreation that is limited to hunting, fishing, wildlife observation, or photography
- Law enforcement related to public use and recreation
- Direct operating/capital costs associated with the recreation fee program



Other Accomplishments

Administered 85 Special Recreation Permits, including multiple new event permits.

Updated/refreshed kiosk content with Leave No Trace principles and area regulations; conducted Wilderness and WSA monitoring.

Initiated creative anti-dumping campaign; law enforcement support.

Horse pack-ins, shuttles, and per diem for river patrols; facility maintenance, including restroom and cabana upkeep.

Supported trail-based recreation.

Vicinity Map



Contacts

Uncompahgre Field Office
Recreation Fee Program Contact

Phone Number: (970) 240-5337

Email: efranz@blm.gov

Web: <https://www.blm.gov/office/uncompahgre-field-office>

[Published FLREA Triennial Report](https://doi.sciencebase.gov/flrea/)
<https://doi.sciencebase.gov/flrea/>

[Published FLREA Annual Revenue and Spending Plans](https://www.blm.gov/programs/recreation/permits-and-fees/flrea-revenue)
<https://www.blm.gov/programs/recreation/permits-and-fees/flrea-revenue>

[Connecting with Communities BLM Recreation Strategy](https://www.blm.gov/national-office/public-room/strategic-plan/connecting-communities-blm-recreation-strategy-summary)
<https://www.blm.gov/national-office/public-room/strategic-plan/connecting-communities-blm-recreation-strategy-summary>

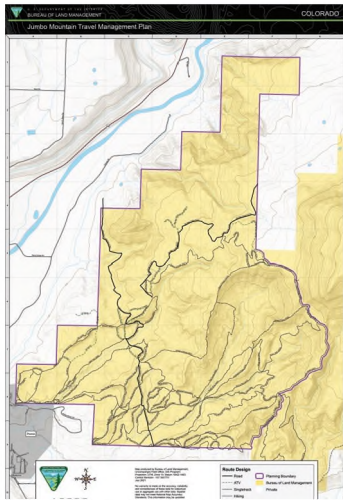
Revenue & Expenditures

End of Year Carryover:	\$144,814.92
FY22 Revenue	
Recreation Use Permits (RUPs)	\$0.00
Special Recreation Permits (SRPs)	\$136,771.00
Individual Special Recreation Permits	\$35,728.00
Interagency Passes	\$30,660.00
Total Recreation Fee Revenue for FY22:	\$203,159.00

FY22 Expenditures	
Repair & Maintenance	\$25,092.32
Visitor Services	\$76,740.19
Law Enforcement	\$36,495.00
Habitat Restoration	\$51,962.18
Collections/Overhead	\$6,718.00
Total Recreation Fee Expenditures for FY22:	\$197,007.69



Planned Activities



Jumbo Mountain trail system overview map

- Special Recreation Permit administration: \$46,696
- River patrols: \$50,000
- New career seasonal river ranger and career seasonal maintenance ranger positions: \$93,392
- Gunnison Gorge Wilderness campsite maps, brochures, kiosk inserts: \$7,000
- Jumbo Mountain signage and trail work (multi-year): \$20,000
- Eagle Rock Shelter interpretive plan implementation: \$10,000
- Gunnison Gorge Wilderness trail maintenance: \$2,000
- Big game habitat restoration: \$10,000
- Recreation site maintenance: \$10,000

FY23 Planned Expenditures

Repair & Maintenance	\$30,000.00
Visitor Services	\$140,088.00
Law Enforcement	\$38,000.00
Habitat Restoration	\$55,000.00
Collections/Overhead	\$6,000.00
Total Recreation Fee Expenditures for FY23:	\$269,088.00
Carryover Funds To FY23:	\$150,966.23
FY23 Projected Revenue:	\$150,000.00

Connecting with Communities

BLM continues to grow our partnership with Colorado Canyons Association (CCA), to enrich education, stewardship, and outreach in our NCAs. Together we hosted river trips, hiking trips, and Cottonwood Days education event, which all target underserved populations. These enable youth to experience a non-traditional classroom, while fusing with grade-level curriculum. We promote Leave No Trace principles, responsible use of public lands, and socio-emotional learning. Our Junior Ranger program was expanded and translated into Spanish, allowing the public to access educational materials. CCA also hosted “Adopt-a-Trail” volunteers, who regularly patrol the NCAs and report on the conditions of our well-loved trails. These outreach and engagement efforts are critical to building an ethic of stewardship in the local community. Finally, UFO issued 3 event permits, including an ultra-marathon in GGNCA, an ultra-marathon on the West End, and a gravel bike ride on the West End of Montrose county. The West End is comprised of small towns that have suffered economic losses due to the coal plant shutdown. BLM’s partnership with local groups brings tourism dollars to communities that need it most.

