



# North Park



Overview of North Park Restoration Landscape.

The Bureau of Land Management is infusing \$161 million for ecosystem restoration and resilience on the nation's public lands, as part of the Biden-Harris Administration's Investing in America agenda. The proposed work will focus on 21 "Restoration Landscapes" across 11 western states, restoring public lands, strengthening communities and local economies, advancing climate resilience and furthering our commitment to Tribal collaboration and partnership.

The landscape of North Park is one of the best places in the state to visit and experience core sagebrush habitat. These sagebrush communities, home to one of the largest wetland complexes in Colorado, are at high elevations that are more resilient to impacts from a changing climate. The landscape boasts critical winter range and migration corridors for big game, and numerous culturally significant sites, including the Northern Ute Trail. Investment in aquatic, riparian, wetland and terrestrial habitat improvements, fuels reduction and invasive species management will preserve historic and cultural sites and enhance recreational opportunities.

## Restoration Features



Create Climate Resilience



Restore Streams/Hydrology



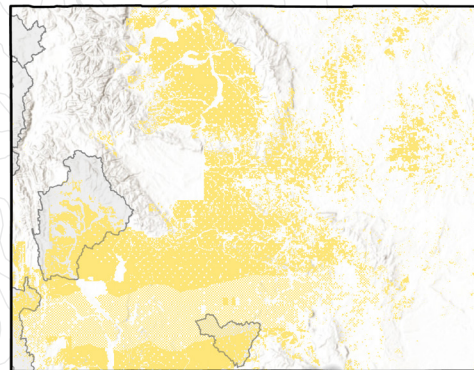
Enhance Recreation Experiences



Conduct Fire/Fuels Treatments



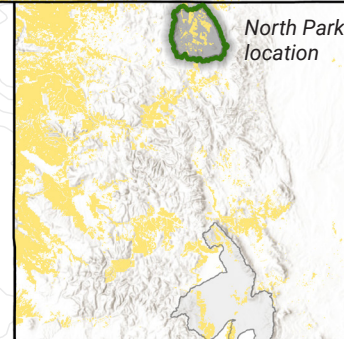
Restore Riparian/Wetland



**\$5M**  
INFLATION REDUCTION ACT

**911K**  
TOTAL ACRES

**169K**  
BLM-managed acres



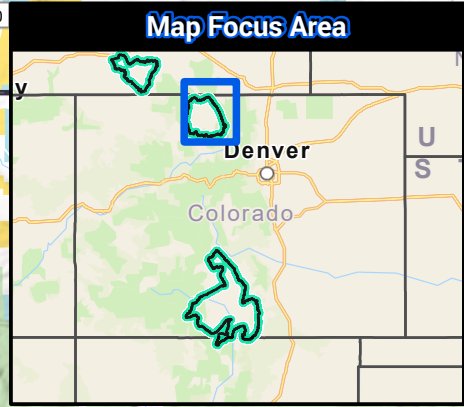
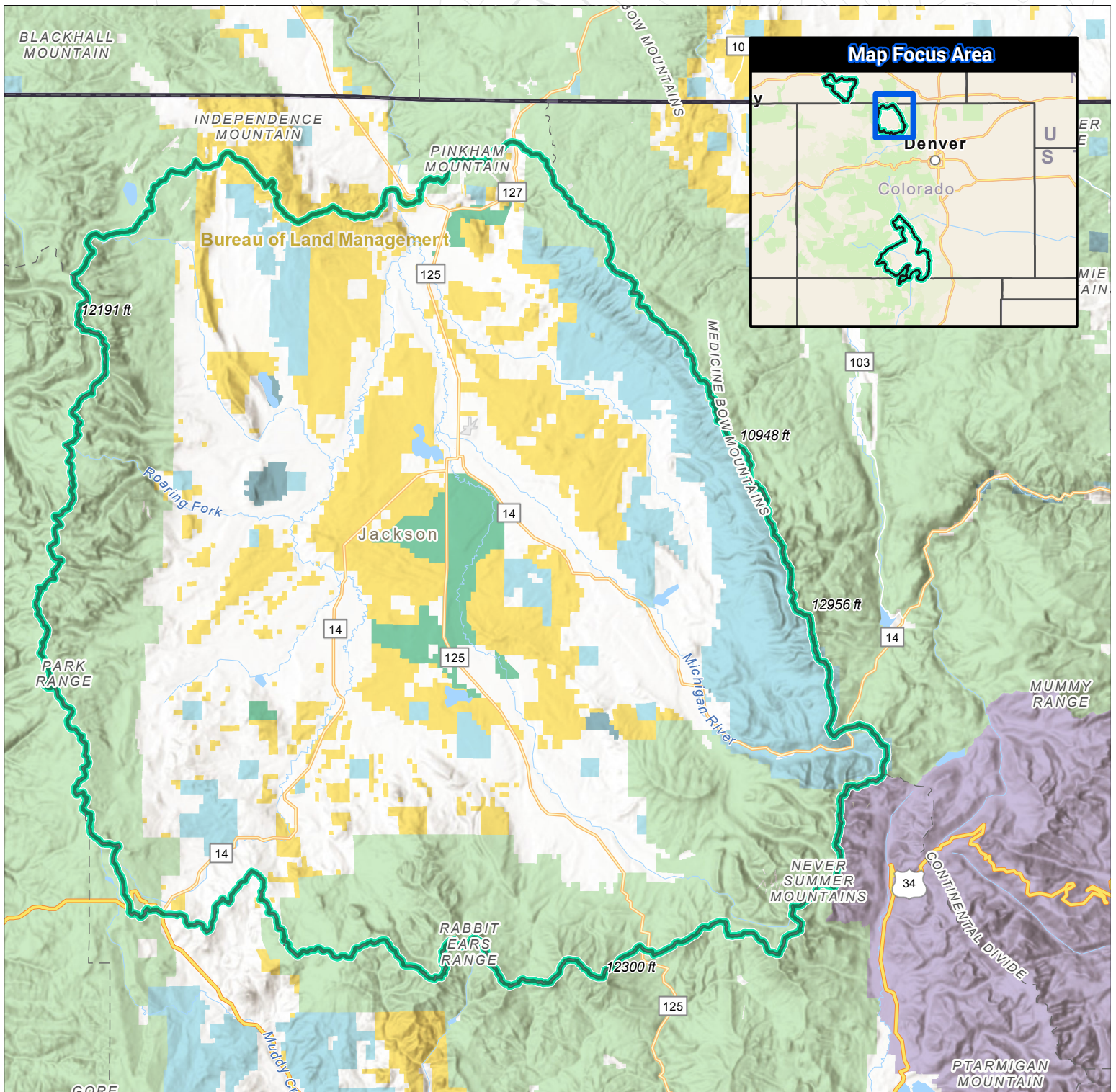
North Park location



Work in Bolton Draw.



# North Park Restoration Landscape



- |                             |                                 |                                |                    |
|-----------------------------|---------------------------------|--------------------------------|--------------------|
| Restoration Landscape       | Bureau of Land Management (BLM) | US Fish and Wildlife (USFW)    | State              |
| U.S. State Boundary         | National Park Service (NPS)     | Bureau of Reclamation (USBR)   | Local              |
| Department Of Defense (DOD) | US Forest Service (USFS)        | Bureau of Indian Affairs (BIA) | Private or Unknown |