



Lower Pecos



Lower Pecos landscape with rolling limestone hills and canyons dotted with desert species vegetation.

The Bureau of Land Management is infusing \$161 million for ecosystem restoration and resilience on the nation’s public lands, as part of the Biden-Harris Administration’s Investing in America agenda. The proposed work will focus on 21 “Restoration Landscapes” across 11 western states, restoring public lands, strengthening communities and local economies, advancing climate resilience and furthering our commitment to Tribal collaboration and partnership.

Investments here will help the BLM build on nearly 20 years of experience restoring the Pecos River Watershed. Landscape-scale treatments protect fragile soils, increase native grasses, reverse fragmentation, improve water filtration and groundwater recharge, reduce sediment loads in the Pecos and its tributaries, and restore habitat for a multitude of species – pronghorn, lesser prairie-chicken, bluntnose shiner, gambusia, aplomado falcon, Pecos sunflower, Noel’s amphipod, wild buckwheat, Texas hornshell mussel, Kuenzler’s hedgehog cactus and dunes sagebrush lizard. Restoring the landscape will enhance recreation on public lands and help fulfill our mission of multiple use and sustained yield.

This effort will complement \$1.35 million of funding from the Bipartisan Infrastructure Law.

Restoration Features



Create Climate Resilience



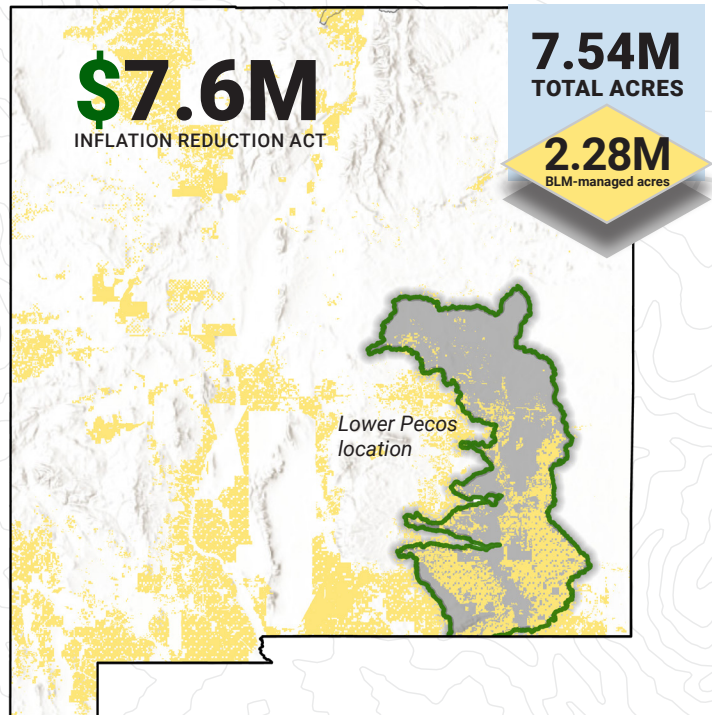
Restore Streams/Hydrology



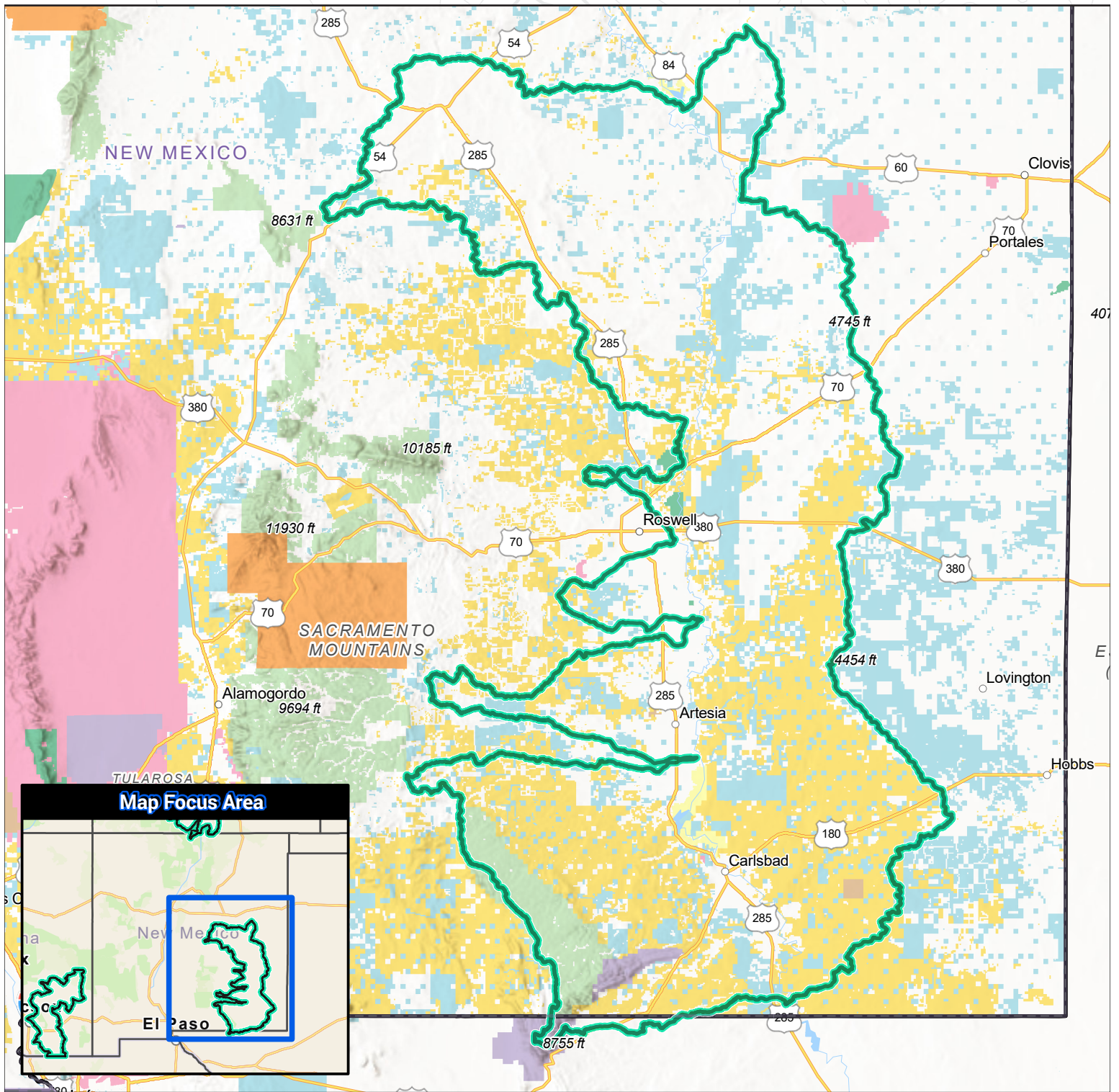
Enhance Recreation Experiences



Protect native plants & remove invasive species



Lower Pecos Restoration Landscape



- | | | | |
|-----------------------------|---------------------------------|------------------------------|-------|
| Restoration Landscape | Bureau of Land Management (BLM) | US Fish and Wildlife (USFW) | State |
| U.S. State Boundary | National Park Service (NPS) | Bureau of Reclamation (USBR) | Local |
| Department Of Defense (DOD) | US Forest Service (USFS) | Private or Unknown | |
| | Bureau of Indian Affairs (BIA) | | |