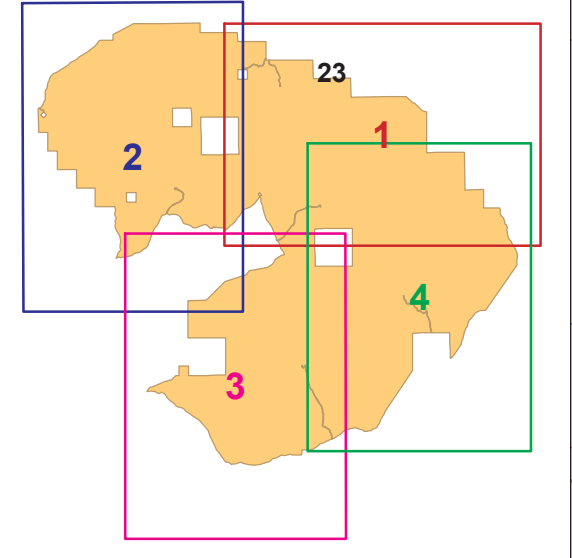


R 2 E 116° 9' 0" W R 3 E

116° 6' 0" W

Little Jacks Creek Wilderness Map Index



Road excluded from wilderness

42° 42' 0" N

42° 42' 0" N

T 8 S

T 8 S

T 9 S

T 9 S

42° 39' 0" N

42° 39' 0" N

OWYHEE COUNTY

Big Jacks Creek Wilderness
(See its map series for details.)

Road excluded from wilderness

LEGEND

WILDERNESS

- Wilderness Legal Boundary Description
- Designated BLM Wilderness
- Land that would become wilderness if acquired by BLM¹⁴
- BLM proposes as non-wilderness if acquired
- Other Wilderness

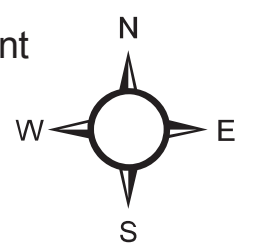
SURFACE MANAGEMENT AGENCY

- Bureau of Land Management
- State of Idaho

OTHER

- Primitive Road
- Underground Oil or Gas Pipeline

See Index Map for full detailed legend.



Latitude/Longitude of this location:
42° 38' 12.119" N, 116° 07' 11.452" W;
Corner of sections 16, 17, 20, and 21.

Land would become Big Jacks Creek Wilderness if acquired

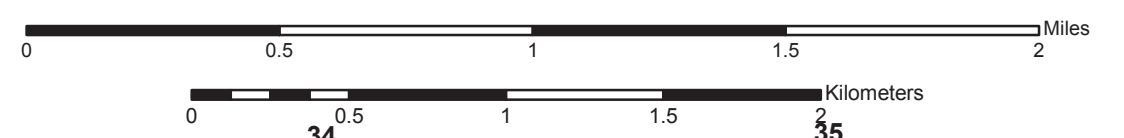
Road excluded from wilderness

LITTLE JACKS CREEK WILDERNESS

Map 4 of 4

U.S. Bureau of Land Management
Boise District, Idaho

Omnibus Public Land Management Act of 2009
Public Law 111-11



North American Datum of 1983
Universal Transverse Mercator Zone 11

Map date: August 31, 2011

R 2 E R 3 E 116° 9' 0" W

116° 6' 0" W