

R18E

R19E

The US Geological Survey 7.5-minute series maps are used as the base for this map. These base maps may indicate roads or jeep trails inside the wilderness boundaries. Any such roads or jeep trails were closed to vehicle use by the designation of the area as wilderness, according to the Wilderness Act of 1964, unless use is otherwise specifically provided by legislation.

T 6 S

T 6 S

T 7 S

T 7 S

Lat. 32° 52' 13.45"N  
Long. 110° 26' 8.05"W

# Aravaipa Canyon Wilderness

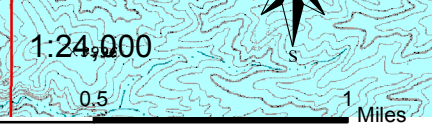
Map 2 of 2

Safford Field Office  
Gila District  
Bureau of Land Management  
Arizona



PL. 98-406 and P.L. 101-628, Serial Case File # AZA25467  
Map Prepared 4-3-2012

- Wilderness Location
- Wilderness Boundary
- Township/Range Line
- Section Line
- County Boundary
- BLM State
- Private



No warranty is made by the Bureau of Land Management as to the accuracy, reliability, or completeness of these data for individual use or aggregate use with other data.

R18E