

NATIONAL WILDERNESS PRESERVATION SYSTEM

Aravaipa Canyon Wilderness

Arizona State Office

I hereby certify that the maps and legal boundary description herewith represents the boundary of Aravaipa Canyon Wilderness, which contains 19,617 acres, more or less. Aravaipa Canyon Wilderness is within the jurisdiction of the Arizona State Office.

Signed: Stephen K. Hansen Date: 5/02/2012
Chief Cadastral Surveyor

I hereby certify and accept the map and legal boundary description of Aravaipa Canyon Wilderness within the jurisdiction of the Arizona State Office as entered into the National Wilderness Preservation System under Public Law 98-406 and Public Law 101-628.

Signed: Raymond B. ... Date: 5/02/2012
State Director

ORIGINAL

**UNITED STATES
DEPARTMENT OF THE INTERIOR
BUREAU OF LAND MANAGEMENT**

COMPOSITE FIELD NOTES
OF THE
SURVEY OF THE
LEGAL DESCRIPTIVE BOUNDARY
OF THE
ARAVAIPA CANYON WILDERNESS AREA
IN
TOWNSHIPS 7 SOUTH, RANGES 18 AND 19 EAST
AND TOWNSHIPS 6 SOUTH, RANGES 17 THRU 19 EAST
OF THE GILA AND SALT RIVER MERIDIAN,
IN THE STATE OF ARIZONA.

EXECUTED BY

Gordon R. Bubel and Geoffrey A. Graham, Cadastral Surveyors

Under Special Instructions dated January 17, 2001, approved January 17, 2001, and Supplemental Special Instructions dated February 14, 2011, approved February 14, 2011, which provided for the surveys included under Group No. 860 and assignment instructions dated January 17, 2001, and February 14, 2011.

Survey commenced February 12, 2001

Survey completed February 16, 2011

ORIGINAL

Tps. 7 S., Rs. 18 and 19 E. and
Tps. 6 S., Rs. 17 thru 19 E., Gila and Salt River Meridian, Arizona

CHAINS

The approval of these composite field notes will constitute the legal description of the Aravaipa Canyon Wilderness Area boundary, as required by Public Law 101-628, "Arizona Desert Wilderness Act of 1990", TITLE 1, SEC. 101 (c).

This survey was executed in compliance with the provisions as set forth in Public Law 101-628, "Arizona Desert Wilderness Act of 1990".

These field notes are a composite of the approved surveys executed in the individual townships. They describe the survey of the descriptive boundary of the Aravaipa Canyon Wilderness Area in Townships 7 South, Ranges 18 and 19 East and Townships 6 South, Ranges 17 thru 19 East, Gila and Salt River Meridian, Arizona.

For detailed information regarding the survey history of the townships, refer to the approved field notes of the individual townships.

This survey was executed in accordance with the specifications as set forth in the Manual of Instructions for the Survey of the Public Lands of the United States, 1973, and the Special Instructions dated January 17, 2001, and Supplemental Special Instructions dated February 14, 2011, for Group Number 860, Arizona.

For detailed information regarding monumentation and topography, refer to the field note record for that particular township.

The distances and directions of all lines were determined by use of the Trimble 4400 and 5800 real time kinematic surveying system, and refer to the true meridian.

Geodetic control was derived by differential positioning using the Trimble Navigation 4400 Series global positioning system. United States Coast and Geodetic Survey triangulation station "DEER 1946" was used as the control station. The geographic position of the cor. of secs. 1 and 12 only, on the E. bdy. of T. 7 S., R. 18 E. is as follows:

Latitude: 33°50'45.54" N. Longitude: 110°26'54.68" W.
NAD 83 (1992)

**Survey of the Legal Descriptive Boundary
of the Aravaipa Canyon Wilderness Area,
Tps. 7 S., Rs. 18 and 19 E. and
Tps. 6 S., Rs. 17 thru 19 E., Gila and Salt River Meridian, Arizona**

CHAINS

In Township 7 South, Range 18 East

Beginning at Angle Point 1, sec. 4, identical with Angle Point 12, sec. 33, T. 6 S., R. 18 E., on the line bet. secs. 4 and 33, on the N. bdy. of the Tp.

thence S. 38°58' E., 4.03 chs. dist., to Angle Point 2, sec. 4;
thence N. 88°25' E., 2.65 chs. dist., to Angle Point 3, sec. 4;
thence N. 33°43' E., 3.67 chs. dist., to Angle Point 4, sec. 4,
identical with Angle Point 13, sec. 33, T. 6 S., R. 18 E., on
the line bet. secs. 4 and 33, on the N. bdy. of the Tp.

In Township 6 South, Range 18 East

From Angle Point 13, sec. 33, identical with Angle Point 4, sec. 4, T. 7 S., R. 18 E., on the line bet. secs. 33 and 4, on the S. bdy. of the Tp.

thence N. 33°29' E., 10.13 chs. dist. to Angle Point 14, sec. 33;
thence N. 63°06' E., 3.10 chs. dist. to Angle Point 15, sec. 33;
thence N. 12°58' E., 5.18 chs. dist. to Angle Point 16, sec. 33;
thence N. 24°22' E., 6.12 chs. dist. to Angle Point 17, sec. 33;
thence N. 11°40' W., 2.97 chs. dist. to Angle Point 18, sec. 33;
thence N. 7°31' W., 8.38 chs. dist. to Angle Point 19, sec. 33;
thence N. 6°10' E., 7.07 chs. dist. to Angle Point 20, sec. 33;
thence N. 25°24' W., 3.65 chs. dist. to Angle Point 21, sec. 33;
thence N. 57°15' W., 6.83 chs. dist. to Angle Point 22, sec. 33;
thence N. 27°24' W., 6.47 chs. dist. to Angle Point 23, sec. 33;
thence N. 0°01' W., 4.21 chs. dist. to Angle Point 24, sec. 33;
thence N. 9°38' E., 6.47 chs. dist. to Angle Point 25, sec. 33;
thence N. 63°43' E., 8.72 chs. dist. to Angle Point 26, sec. 33;
thence N. 15°23' E., 4.70 chs. dist. to Angle Point 27, sec. 33;
thence N. 17°36' E., 5.00 chs. dist. to Angle Point 28, sec. 33,
identical with Angle Point 1, sec. 34,, on the line bet.
secs. 33 and 34;
thence N. 22°17' E., 2.78 chs. dist. to Angle Point 2, sec. 34;
thence N. 17°07' W., 2.25 chs. dist. to Angle Point 3, sec. 34,
identical with Angle Point 1, sec. 27, on the line bet.
secs. 27 and 34;
thence N. 17°07' W., 1.21 chs. dist. to Angle Point 2, sec. 27;
thence N. 8°19' E., 2.91 chs. dist. to Angle Point 3, sec. 27;
thence N. 81°01' E., 5.64 chs. dist. to Angle Point 4, sec. 27;
thence N. 46°28' E., 4.30 chs. dist. to Angle Point 5, sec. 27;
thence N. 35°21' E., 3.09 chs. dist. to Angle Point 6, sec. 27;
thence S. 86°24' E., 19.90 chs. dist. to Angle Point 7, sec. 27;
thence S. 27°22' E., 8.13 chs. dist. to Angle Point 8, sec. 27;
thence N. 89°28' E., 11.51 chs. dist. to Angle Point 9, sec. 27;
thence N. 87°58' E., 10.81 chs. dist. to Angle Point 10,
sec. 27;
thence N. 73°34' E., 3.68 chs. dist. to Angle Point 11, sec. 27;

Survey of the Legal Descriptive Boundary
of the Aravaipa Canyon Wilderness Area,

Tps. 7 S., Rs. 18 and 19 E. and

Tps. 6 S., Rs. 17 thru 19 E., Gila and Salt River Meridian, Arizona

CHAINS

thence N. 0°52' E., 9.57 chs. dist. to Angle Point 12, sec. 27;
 thence S. 86°04' E., 7.18 chs. dist. to Angle Point 13, sec. 27;
 thence S. 34°02' E., 3.25 chs. dist. to Angle Point 14, sec. 27;
 thence S. 9°50' E., 4.89 chs. dist. to Angle Point 15, sec. 27;
 thence S. 41°11' E., 5.16 chs. dist. to Angle Point 16, sec. 27;
 thence S. 48°03' E., 1.45 chs. dist. to Angle Point 17, sec. 27,
 identical with Angle Point 4, sec. 34, on the line bet. secs.
 27 and 34;
 thence S. 48°03' E., 4.42 chs. dist., to Angle Point 5, sec. 34;
 thence S. 70°41' E., 2.14 chs. dist., to Angle Point 6, sec. 34,
 identical with Angle Point 1, sec. 35, on the line bet. secs.
 34 and 35;
 thence S. 70°41' E., 1.05 chs. dist., to Angle Point 2, sec. 35;
 thence S. 41°14' E., 5.31 chs. dist., to Angle Point 3, sec. 35;
 thence S. 80°43' E., 5.07 chs. dist., to Angle Point 4, sec. 35;
 thence S. 9°43' E., 2.09 chs. dist., to Angle Point 5, sec. 35;
 thence S. 42°47' W., 2.92 chs. dist., to Angle Point 6, sec. 35;
 thence N. 82°21' E., 7.15 chs. dist., to Angle Point 7, sec. 35;
 thence N. 2°45' W., 5.25 chs. dist., to Angle Point 8, sec. 35;
 thence N. 84°35' E., 4.07 chs. dist., to Angle Point 9, sec. 35;
 thence N. 59°10' E., 3.74 chs. dist., to Angle Point 10,
 sec. 35;
 thence N. 47°44' W., 6.74 chs. dist., to Angle Point 11,
 sec. 35, identical with Angle Point 1, sec. 26,, on the line
 bet. secs. 26 and 35;
 thence N. 17°45' W., 1.91 chs. dist., to Angle Point 2, sec. 26;
 thence N. 68°03' E., 4.16 chs. dist., to Angle Point 3, sec. 26;
 thence N. 78°53' E., 5.19 chs. dist., to Angle Point 4, sec. 26;
 thence N. 56°15' E., 3.54 chs. dist., to Angle Point 5, sec. 26;
 thence N. 53°30' W., 6.79 chs. dist., to Angle Point 6, sec. 26;
 thence N. 36°39' W., 12.12 chs. dist., to Angle Point 7,
 sec. 26;
 thence N. 30°41' E., 8.63 chs. dist., to Angle Point 8, sec. 26;
 thence N. 3°41' W., 4.75 chs. dist., to Angle Point 9, sec. 26;
 thence N. 74°28' W., 8.12 chs. dist., to Angle Point 10,
 sec. 26;
 thence N. 46°49' W., 9.12 chs. dist., to Angle Point 11,
 sec. 26;
 thence N. 15°47' W., 5.63 chs. dist., to Angle Point 12,
 sec. 26;
 thence N. 0°14' W., 7.18 chs. dist., to Angle Point 13, sec. 26;
 thence N. 42°17' E., 6.39 chs. dist., to Angle Point 14,
 sec. 26;
 thence N. 22°08' E., 5.39 chs. dist., to Angle Point 15,
 sec. 26;
 thence N. 55°42' E., 11.06 chs. dist., to Angle Point 16,
 sec. 26;
 thence N. 64°12' E., 5.26 chs. dist., to Angle Point 17,
 sec. 26;
 thence N. 72°41' E., 5.94 chs. dist., to Angle Point 18,
 sec. 26;
 thence N. 10°06' W., 4.18 chs. dist., to Angle Point 19,
 sec. 26;

Survey of the Legal Descriptive Boundary
of the Aravaipa Canyon Wilderness Area,
Tps. 7 S., Rs. 18 and 19 E. and

Tps. 6 S., Rs. 17 thru 19 E., Gila and Salt River Meridian, Arizona

CHAINS

thence S. 69°50' E., 5.16 chs. dist., to Angle Point 20,
sec. 26;
thence N. 14°52' E., 4.67 chs. dist., to Angle Point 21,
sec. 26, identical with Angle Point 1, sec. 23, on the line
bet. secs. 23 and 26;

thence N. 14°52' E., 1.92 chs. dist., to Angle Point 2, sec. 23;
thence N. 16°24' E., 8.44 chs. dist., to Angle Point 3, sec. 23;
thence S. 87°33' E., 7.32 chs. dist., to Angle Point 4, sec. 23;
thence N. 27°02' E., 4.27 chs. dist., to Angle Point 5, sec. 23;
thence N. 89°47' E., 1.64 chs. dist., to Angle Point 6, sec. 23;
thence S. 44°10' E., 5.12 chs. dist., to Angle Point 7, sec. 23;
thence N. 54°13' E., 6.81 chs. dist., to Angle Point 8, sec. 23;
thence N. 29°43' E., 6.89 chs. dist., to Angle Point 9, sec. 23;
thence N. 9°29' W., 4.70 chs. dist., to Angle Point 10, sec. 23;
thence N. 44°37' W., 4.83 chs. dist., to Angle Point 11,
sec. 23;
thence N. 25°56' W., 7.40 chs. dist., to Angle Point 12,
sec. 23;
thence N. 80°00' W., 5.92 chs. dist., to Angle Point 13,
sec. 23;
thence N. 80°53' W., 6.94 chs. dist., to Angle Point 14,
sec. 23;
thence S. 76°30' W., 7.19 chs. dist., to Angle Point 15,
sec. 23;
thence N. 59°03' W., 3.06 chs. dist., to Angle Point 16,
sec. 23;
thence N. 27°49' W., 6.60 chs. dist., to Angle Point 17,
sec. 23;
thence N. 34°22' E., 5.17 chs. dist., to Angle Point 18,
sec. 23;
thence N. 17°06' E., 6.04 chs. dist., to Angle Point 19,
sec. 23;
thence N. 65°05' W., 4.69 chs. dist., to Angle Point 20,
sec. 23;
thence N. 46°38' W., 5.20 chs. dist., to Angle Point 21,
sec. 23;
thence N. 5°37' W., 2.54 chs. dist., to Angle Point 22, sec. 23;
thence N. 18°14' E., 1.48 chs. dist., to Angle Point 23,
sec. 23;
thence S. 86°25' E., 3.01 chs. dist., to Angle Point 24,
sec. 23;
thence S. 81°37' E., 2.36 chs. dist., to Angle Point 25,
sec. 23;
thence S. 3°16' W., 5.95 chs. dist., to Angle Point 26, sec. 23;
thence S. 78°26' E., 3.54 chs. dist., to Angle Point 27,
sec. 23;
thence S. 20°30' E., 2.62 chs. dist., to Angle Point 28,
sec. 23;
thence S. 20°22' W., 7.56 chs. dist., to Angle Point 29,
sec. 23;
thence S. 16°52' W., 4.97 chs. dist., to Angle Point 30,
sec. 23;

Survey of the Legal Descriptive Boundary
of the Aravaipa Canyon Wilderness Area,
Tps. 7 S., Rs. 18 and 19 E. and

Tps. 6 S., Rs. 17 thru 19 E., Gila and Salt River Meridian, Arizona

CHAINS	
	thence S. 36°36' E., 3.08 chs. dist., to Angle Point 31, sec. 23;
	thence N. 88°58' E., 11.70 chs. dist., to Angle Point 32, sec. 23;
	thence S. 74°55' E., 4.30 chs. dist., to Angle Point 33, sec. 23;
	thence S. 80°54' E., 6.04 chs. dist., to Angle Point 34, sec. 23;
	thence S. 60°04' E., 7.27 chs. dist., to Angle Point 35, sec. 23;
	thence S. 8°38' E., 13.01 chs. dist., to Angle Point 36, sec. 23;
	thence S. 30°00' W., 3.82 chs. dist., to Angle Point 37, sec. 23;
	thence S. 29°43' W., 6.70 chs. dist., to Angle Point 38, sec. 23;
	thence S. 63°06' W., 4.49 chs. dist., to Angle Point 39, sec. 23;
	thence N. 82°13' W., 2.33 chs. dist., to Angle Point 40, sec. 23;
	thence N. 38°43' W., 4.72 chs. dist., to Angle Point 41, sec. 23;
	thence S. 22°15' W., 3.72 chs. dist., to Angle Point 42, sec. 23;
	thence S. 71°47' W., 3.00 chs. dist., to Angle Point 43, sec. 23;
	thence N. 89°14' W., 4.99 chs. dist., to Angle Point 44, sec. 23;
	thence S. 12°24' W., 5.28 chs. dist., to Angle Point 45, sec. 23;
	thence S. 17°13' W., 3.05 chs. dist., to Angle Point 46, sec. 23, identical with Angle Point 22, sec. 26, on the line bet. secs. 23 and 26.
	thence S. 17°13' W., 5.80 chs. dist., to Angle Point 23, sec. 26;
	thence S. 59°17' W., 5.08 chs. dist., to Angle Point 24, sec. 26;
	thence S. 75°46' W., 6.54 chs. dist., to Angle Point 25, sec. 26;
	thence S. 51°55' W., 11.41 chs. dist., to Angle Point 26, sec. 26;
	thence S. 45°10' W., 6.69 chs. dist., to Angle Point 27, sec. 26;
	thence S. 24°41' W., 5.27 chs. dist., to Angle Point 28, sec. 26;
	thence S. 65°01' W., 3.37 chs. dist., to Angle Point 29, sec. 26;
	thence S. 8°45' E., 6.96 chs. dist., to Angle Point 30, sec. 26;
	thence S. 3°25' E., 4.65 chs. dist., to Angle Point 31, sec. 26;
	thence S. 49°49' E., 6.31 chs. dist., to Angle Point 32, sec. 26;
	thence S. 71°24' E., 7.98 chs. dist., to Angle Point 33, sec. 26;

Survey of the Legal Descriptive Boundary
of the Aravaipa Canyon Wilderness Area,
Tps. 7 S., Rs. 18 and 19 E. and
Tps. 6 S., Rs. 17 thru 19 E., Gila and Salt River Meridian, Arizona

CHAINS	
	thence S. 53°38' E., 3.43 chs. dist., to Angle Point 34, sec. 26;
	thence S. 1°49' W., 5.12 chs. dist., to Angle Point 35, sec. 26;
	thence S. 30°40' W., 8.44 chs. dist., to Angle Point 36, sec. 26;
	thence S. 36°42' E., 11.10 chs. dist., to Angle Point 37, sec. 26;
	thence S. 56°33' E., 6.24 chs. dist., to Angle Point 38, sec. 26;
	thence S. 10°49' E., 2.20 chs. dist., to Angle Point 39, sec. 26;
	thence S. 46°47' W., 6.66 chs. dist., to Angle Point 40, sec. 26;
	thence S. 81°32' W., 5.63 chs. dist., to Angle Point 41, sec. 26, identical with Angle Point 12, sec 35, on the line bet. secs. 26 and 35;
	thence S. 54°48' E., 4.51 chs. dist., to Angle Point 13, sec. 35;
	thence S. 24°20' E., 5.40 chs. dist., to Angle Point 14, sec. 35;
	thence N. 82°37' W., 4.57 chs. dist., to Angle Point 15, sec. 35;
	thence S. 34°14' W., 8.08 chs. dist., to Angle Point 16, sec. 35;
	thence S. 79°16' W., 8.16 chs. dist., to Angle Point 17, sec. 35;
	thence S. 35°06' W., 10.35 chs. dist., to Angle Point 18, sec. 35;
	thence S. 35°10' E., 5.87 chs. dist., to Angle Point 19, sec. 35;
	thence S. 79°47' E., 7.27 chs. dist., to Angle Point 20, sec. 35;
	thence S. 78°59' E., 3.76 chs. dist., to Angle Point 21, sec. 35;
	thence S. 31°19' E., 13.21 chs. dist., to Angle Point 22, sec. 35;
	thence S. 37°07' E., 5.17 chs. dist., to Angle Point 23, sec. 35;
	thence S. 21°43' E., 10.80 chs. dist., to Angle Point 24, sec. 35;
	thence S. 64°46' E., 7.81 chs. dist., to Angle Point 25, sec. 35;
	thence S. 61°07' E., 6.69 chs. dist., to Angle Point 26, sec. 35;
	thence S. 38°56' E., 5.36 chs. dist., to Angle Point 27, sec. 35;
	thence S. 18°29' E., 4.93 chs. dist., to Angle Point 28, sec. 35;
	thence S. 13°13' W., 8.98 chs. dist., to Angle Point 29, sec. 35, identical with Angle Point 1, sec. 2, T. 7 S., R 18 E., on the line bet. secs. 2 and 35, on the S. bdy. of the Tp.

Survey of the Legal Descriptive Boundary
of the Aravaipa Canyon Wilderness Area,
Tps. 7 S., Rs. 18 and 19 E. and

Tps. 6 S., Rs. 17 thru 19 E., Gila and Salt River Meridian, Arizona

CHAINS

In Township 7 South, Range 18 East

From Angle Point 1, sec. 2, identical with Angle Point 29, sec. 35, T. 6 S., R. 18 E., on the line bet. secs. 2 and 35, on the N. bdy. of the Tp.

thence S. 1°23' W., 7.11 chs. dist., to Angle Point 2, sec. 2;
thence S. 41°15' E., 7.27 chs. dist., to Angle Point 3, sec. 2;
thence S. 9°54' E., 8.14 chs. dist., to Angle Point 4, sec. 2;
thence S. 10°36' W., 7.88 chs. dist., to Angle Point 5, sec. 2;
thence S. 6°56' W., 4.62 chs. dist., to Angle Point 6, sec. 2;
thence S. 21°42' W., 1.78 chs. dist., to Angle Point 7, sec. 2;
thence S. 31°22' E., 9.72 chs. dist., to Angle Point 8, sec. 2;
thence S. 25°24' E., 1.98 chs. dist., to Angle Point 9, sec. 2;
thence S. 14°43' W., 4.67 chs. dist., to Angle Point 10, sec. 2;
thence S. 28°20' W., 3.62 chs. dist., to Angle Point 11, sec. 2;
thence S. 31°10' W., 15.38 chs. dist., to Angle Point 12, sec. 2;
thence S. 32°55' W., 5.25 chs. dist., to Angle Point 13, sec. 2;
thence S. 58°25' W., 4.26 chs. dist., to Angle Point 14, sec. 2;
thence S. 38°29' W., 8.91 chs. dist., to Angle Point 15, sec. 2;
thence S. 2°39' W., 6.42 chs. dist., to Angle Point 16, sec. 2,
identical with Angle Point 1, sec. 11, on the line bet. secs. 2 and 11;
thence S. 13°42' W., 11.00 chs. dist., to Angle Point 2, sec. 11;
thence S. 53°30' W., 7.82 chs. dist., to Angle Point 3, sec. 11;
thence S. 41°38' W., 3.63 chs. dist., to Angle Point 4, sec. 11;
thence S. 3°14' E., 5.43 chs. dist., to Angle Point 5, sec. 11;
thence S. 40°40' E., 7.52 chs. dist., to Angle Point 6, sec. 11;
thence S. 34°10' W., 11.59 chs. dist., to Angle Point 7, sec. 11;
thence S. 19°09' E., 7.23 chs. dist., to Angle Point 8, sec. 11;
thence S. 45°55' E., 1.98 chs. dist., to Angle Point 9, sec. 11;
thence S. 37°34' W., 4.49 chs. dist., to Angle Point 10, sec. 11;
thence S. 11°04' E., 7.83 chs. dist., to Angle Point 11, sec. 11;
thence S. 1°48' W., 8.32 chs. dist., to Angle Point 12, sec. 11;
thence S. 46°28' W., 3.86 chs. dist., to Angle Point 13, sec. 11;
thence S. 9°11' E., 8.35 chs. dist., to Angle Point 14, sec. 11;
thence S. 41°10' W., 3.56 chs. dist., to Angle Point 15, sec. 11, identical with Angle Point 1, sec. 14, on the line bet. secs. 11 and 14;
thence S. 16°05' W., 5.31 chs. dist., to Angle Point 2, sec. 14;
thence S. 27°25' E., 9.15 chs. dist., to Angle Point 3, sec. 14;
thence S. 25°51' E., 9.38 chs. dist., to Angle Point 4, sec. 14;
thence S. 8°45' E., 13.47 chs. dist., to Angle Point 5, sec. 14;
thence N. 89°56' E., 2.42 chs. dist., to Angle Point 6, sec. 14;
thence N. 89°57' E., 4.95 chs. dist., to Angle Point 7, sec. 14;
thence S. 0°14' E., 1.69 chs. dist., to Angle Point 8, sec. 14;
thence S. 75°36' E., 9.06 chs. dist., to Angle Point 9, sec. 14;

Survey of the Legal Descriptive Boundary
of the Aravaipa Canyon Wilderness Area,
Tps. 7 S., Rs. 18 and 19 E. and

Tps. 6 S., Rs. 17 thru 19 E., Gila and Salt River Meridian, Arizona

CHAINS	
	thence S. 79°45' E., 8.09 chs. dist., to Angle Point 10, sec. 14;
	thence N. 51°28' E., 5.11 chs. dist., to Angle Point 11, sec. 14;
	thence N. 51°13' W., 9.31 chs. dist., to Angle Point 12, sec. 14;
	thence N. 13°01' E., 2.55 chs. dist., to Angle Point 13, sec. 14;
	thence S. 67°29' E., 4.60 chs. dist., to Angle Point 14, sec. 14;
	thence S. 87°33' E., 6.72 chs. dist., to Angle Point 15, sec. 14;
	thence N. 50°39' E., 2.85 chs. dist., to Angle Point 16, sec. 14;
	thence N. 54°16' E., 8.54 chs. dist., to Angle Point 17, sec. 14;
	thence N. 67°49' E., 8.21 chs. dist., to Angle Point 18, sec. 14;
	thence S. 85°14' E., 3.21 chs. dist., to Angle Point 19, sec. 14, identical with Angle Point 1, sec. 13,, on the line bet. secs. 13 and 14;
	thence S. 86°50' E., 6.43 chs. dist., to Angle Point 2, sec. 13;
	thence N. 72°48' E., 4.91 chs. dist., to Angle Point 3, sec. 13;
	thence N. 74°37' E., 4.98 chs. dist., to Angle Point 4, sec. 13;
	thence N. 46°45' E., 1.85 chs. dist., to Angle Point 5, sec. 13;
	thence N. 1°08' W., 7.91 chs. dist., to Angle Point 6, sec. 13;
	thence N. 89°07' W., 4.76 chs. dist., to Angle Point 7, sec. 13;
	thence N. 0°45' W., 6.57 chs. dist., to Angle Point 8, sec. 13;
	thence N. 26°46' W., 3.37 chs. dist., to Angle Point 9, sec. 13, identical with Angle Point 1, sec. 12,, on the line bet. secs. 12 and 13;
	thence N. 76°27' W., 3.79 chs. dist., to Angle Point 2, sec. 12;
	thence N. 51°07' W., 7.27 chs. dist., to Angle Point 3, sec. 12;
	thence N. 17°45' E., 8.31 chs. dist., to Angle Point 4, sec. 12;
	thence N. 42°11' E., 6.88 chs. dist., to Angle Point 5, sec. 12;
	thence N. 67°49' E., 11.59 chs. dist., to Angle Point 6, sec. 12;
	thence N. 23°18' E., 2.50 chs. dist., to Angle Point 7, sec. 12;
	thence N. 65°47' E., 9.35 chs. dist., to Angle Point 8, sec. 12;
	thence N. 44°52' E., 19.95 chs. dist., to Angle Point 9, sec. 12;
	thence N. 58°37' E., 6.64 chs. dist., to Angle Point 10, sec. 12;
	thence N. 40°44' E., 5.90 chs. dist., to Angle Point 11, sec. 12;
	thence N. 9°58' E., 6.75 chs. dist., to Angle Point 12, sec. 12;
	thence N. 1°17' E., 6.86 chs. dist., to Angle Point 13, sec. 12;
	thence S. 77°31' E., 3.50 chs. dist., to Angle Point 14, sec. 12;
	thence N. 45°53' E., 6.77 chs. dist., to Angle Point 15, sec. 12;
	thence N. 68°44' E., 5.83 chs. dist., to Angle Point 16, sec. 12;

Survey of the Legal Descriptive Boundary
of the Aravaipa Canyon Wilderness Area,
Tps. 7 S., Rs. 18 and 19 E. and

Tps. 6 S., Rs. 17 thru 19 E., Gila and Salt River Meridian, Arizona

CHAINS

thence N. 10°42' W., 9.34 chs. dist., to Angle Point 17,
sec. 12, identical with Angle Point 1, sec. 1, on the line
bet. secs. 1 and 12;

thence N. 11°51' W., 2.54 chs. dist., to Angle Point 2, sec. 1;
thence N. 38°01' E., 8.90 chs. dist., to Angle Point 3, sec. 1;
thence N. 77°30' W., 2.29 chs. dist., to Angle Point 4, sec. 1;
thence N. 12°35' E., 3.16 chs. dist., to Angle Point 5, sec. 1;
thence N. 25°17' E., 2.20 chs. dist., to Angle Point 6, sec. 1;
thence N. 29°26' W., 3.75 chs. dist., to Angle Point 7, sec. 1;
thence N. 17°38' W., 5.80 chs. dist., to Angle Point 8, sec. 1;
thence N. 59°20' W., 2.24 chs. dist., to Angle Point 9, sec. 1;
thence N. 32°08' W., 6.37 chs. dist., to Angle Point 10, sec. 1;
thence S. 53°53' W., 6.67 chs. dist., to Angle Point 11, sec. 1;
thence S. 72°53' W., 2.95 chs. dist., to Angle Point 12, sec. 1;
thence S. 77°38' W., 3.72 chs. dist., to Angle Point 13, sec. 1;
thence S. 79°26' W., 5.52 chs. dist., to Angle Point 14, sec. 1;
thence N. 25°16' W., 4.34 chs. dist., to Angle Point 15, sec. 1;
thence S. 15°18' W., 2.18 chs. dist., to Angle Point 16, sec. 1;
thence S. 73°32' W., 2.34 chs. dist., to Angle Point 17, sec. 1;
thence N. 47°12' W., 5.24 chs. dist., to Angle Point 18, sec. 1;
thence N. 14°29' W., 5.13 chs. dist., to Angle Point 19, sec. 1;
thence S. 69°39' W., 4.24 chs. dist., to Angle Point 20, sec. 1;
thence N. 33°18' W., 5.62 chs. dist., to Angle Point 21, sec. 1;
thence N. 61°45' E., 4.39 chs. dist., to Angle Point 22, sec. 1;
thence S. 43°44' E., 6.78 chs. dist., to Angle Point 23, sec. 1;
thence S. 11°41' E., 4.48 chs. dist., to Angle Point 24, sec. 1;
thence S. 44°58' E., 3.34 chs. dist., to Angle Point 25, sec. 1;
thence N. 57°25' E., 5.05 chs. dist., to Angle Point 26, sec. 1;
thence S. 20°18' E., 4.80 chs. dist., to Angle Point 27, sec. 1;
thence N. 77°27' E., 9.00 chs. dist., to Angle Point 28, sec. 1;
thence N. 57°07' E., 11.52 chs. dist., to Angle Point 29,
sec. 1;

thence S. 17°24' E., 8.29 chs. dist., to Angle Point 30, sec. 1;
thence S. 77°59' E., 1.58 chs. dist., to Angle Point 31, sec. 1;
thence S. 20°37' E., 11.47 chs. dist., to Angle Point 32,
sec. 1;

thence S. 9°48' E., 5.16 chs. dist., to Angle Point 33, sec. 1;
thence S. 24°45' E., 2.98 chs. dist., to Angle Point 34, sec. 1;
thence N. 72°46' E., 4.64 chs. dist., to Angle Point 35, sec. 1;
thence N. 8°11' W., 15.25 chs. dist., to Angle Point 36, sec. 1;
thence N. 9°02' W., 5.02 chs. dist., to Angle Point 37, sec. 1;
thence N. 65°42' E., 6.29 chs. dist., to Angle Point 38, sec. 1,
identical with Angle Point 1, sec. 6, T. 7 S., R. 18 E., on
the line bet. secs. 1 and 6, on the E. bdy. of the Tp.

In Township 7 South, Range 19 East

From Angle Point 1, sec. 6, identical with Angle Point 38, sec.
1, T. 7 S., R. 18 E., on the line bet. secs. 1 and 6, on the W.
bdy. of the Tp.

thence N. 28°10' E., 8.48 chs. dist., to Angle Point 2, sec. 6;

Survey of the Legal Descriptive Boundary
of the Aravaipa Canyon Wilderness Area,
Tps. 7 S., Rs. 18 and 19 E. and

Tps. 6 S., Rs. 17 thru 19 E., Gila and Salt River Meridian, Arizona

CHAINS

thence N. 48°37' E., 5.26 chs. dist., to Angle Point 3, sec. 6;
thence N. 21°58' W., 9.80 chs. dist., to Angle Point 4, sec. 6;
thence N. 42°31' E., 4.77 chs. dist., to Angle Point 5, sec. 6;
thence N. 2°55' W., 12.30 chs. dist., to Angle Point 6, sec. 6;
thence N. 27°27' E., 4.60 chs. dist., to Angle Point 7, sec. 6;
thence N. 1°42' E., 6.83 chs. dist., to Angle Point 8, sec. 6;
thence N. 33°00' W., 4.60 chs. dist., to Angle Point 9, sec. 6;
thence N. 13°51' E., 4.63 chs. dist., to Angle Point 10, sec. 6,
identical with Angle Point 1, sec. 31, T. 6 S., R. 19 E., on
the line bet. secs. 6 and 31, on the N. bdy. of the Tp.

In Township 6 South, Range 19 East

From Angle Point 1, sec. 31, identical with Angle Point 10,
sec. 6, T. 7 S., R. 19 E., on the line bet. secs. 6 and 31, on
the S. bdy. of the Tp.

thence N. 29°18' W., 3.41 chs. dist., to Angle Point 2, sec. 31;
thence N. 1°38' E., 2.01 chs. dist., to Angle Point 3, sec. 31;
thence S. 75°51' E., 1.52 chs. dist., to Angle Point 4, sec. 31;
thence S. 50°28' E., 3.31 chs. dist., to Angle Point 5, sec. 31;
thence N. 19°38' W., 5.51 chs. dist., to Angle Point 6, sec. 31;
thence N. 9°54' W., 2.17 chs. dist., to Angle Point 7, sec. 31;
thence N. 13°12' E., 3.80 chs. dist., to Angle Point 8, sec. 31;
thence N. 20°54' E., 4.76 chs. dist., to Angle Point 9, sec. 31;
thence N. 30°25' E., 10.62 chs. dist., to Angle Point 10,
sec. 31;
thence N. 74°32' E., 1.36 chs. dist., to Angle Point 11,
sec. 31;
thence S. 35°10' E., 1.24 chs. dist., to Angle Point 12,
sec. 31;
thence S. 25°36' E., 3.26 chs. dist., to Angle Point 13,
sec. 31;
thence N. 79°27' E., 13.46 chs. dist., to Angle Point 14,
sec. 31;
thence S. 86°04' E., 11.18 chs. dist., to Angle Point 15,
sec. 31;
thence S. 35°27' E., 3.18 chs. dist., to Angle Point 16,
sec. 31;
thence N. 88°53' E., 7.03 chs. dist., to Angle Point 17,
sec. 31;
thence S. 27°46' E., 4.45 chs. dist., to Angle Point 18,
sec. 31;
thence N. 58°54' E., 3.46 chs. dist., to Angle Point 19,
sec. 31;
thence S. 70°56' E., 2.69 chs. dist., to Angle Point 20,
sec. 31, identical with Angle Point 1, sec. 32, on the line
bet. secs. 31 and 32;
thence S. 55°37' E., 3.99 chs. dist., to Angle Point 2, sec. 32;
thence N. 87°45' E., 6.57 chs. dist., to Angle Point 3, sec. 32;
thence N. 84°31' E., 6.29 chs. dist., to Angle Point 4, sec. 32;
thence N. 43°05' E., 3.43 chs. dist., to Angle Point 5, sec. 32;

**Survey of the Legal Descriptive Boundary
of the Aravaipa Canyon Wilderness Area,
Tps. 7 S., Rs. 18 and 19 E. and**

Tps. 6 S., Rs. 17 thru 19 E., Gila and Salt River Meridian, Arizona

CHAINS	
	thence S. 80°15' E., 1.96 chs. dist., to Angle Point 6, sec. 32;
	thence S. 3°25' E., 2.16 chs. dist., to Angle Point 7, sec. 32;
	thence N. 56°40' E., 3.86 chs. dist., to Angle Point 8, sec. 32;
	thence N. 21°20' W., 3.44 chs. dist., to Angle Point 9, sec. 32;
	thence N. 58°27' W., 13.65 chs. dist., to Angle Point 10, sec. 32;
	thence N. 18°01' W., 5.48 chs. dist., to Angle Point 11, sec. 32;
	thence N. 26°28' W., 10.45 chs. dist., to Angle Point 12, sec. 32;
	thence N. 54°19' W., 5.60 chs. dist., to Angle Point 13, sec. 32, identical with Angle Point 21, sec. 31, on the line bet. secs. 31 and 32;
	thence N. 53°20' W., 8.93 chs. dist., to Angle Point 22, sec. 31;
	thence N. 11°57' W., 2.91 chs. dist., to Angle Point 23, sec. 31;
	thence N. 5°30' E., 8.26 chs. dist., to Angle Point 24, sec. 31;
	thence N. 9°50' W., 6.77 chs. dist., to Angle Point 25, sec. 31;
	thence N. 22°00' W., 8.87 chs. dist., to Angle Point 26, sec. 31, identical with Angle Point 1, sec. 30, on the line bet. secs. 30 and 31;
	thence N. 27°48' E., 9.96 chs. dist., to Angle Point 2, sec. 30;
	thence N. 20°11' E., 7.37 chs. dist., to Angle Point 3, sec. 30;
	thence N. 35°19' W., 14.31 chs. dist., to Angle Point 4, sec. 30;
	thence N. 18°53' E., 8.84 chs. dist., to Angle Point 5, sec. 30;
	thence N. 1°50' W., 22.04 chs. dist., to Angle Point 6, sec. 30;
	thence N. 45°35' W., 9.99 chs. dist., to Angle Point 7, sec. 30;
	thence N. 16°14' W., 9.08 chs. dist., to Angle Point 8, sec. 30;
	thence N. 7°52' W., 2.81 chs. dist., to Angle Point 9, sec. 30, identical with Angle Point 1, sec. 19, on the line bet. secs. 19 and 30;
	thence N. 7°52' W., 10.79 chs. dist., to Angle Point 2, sec. 19;
	thence N. 20°41' W., 5.26 chs. dist., to Angle Point 3, sec. 19;
	thence N. 0°05' E., 6.61 chs. dist., to Angle Point 4, sec. 19;
	thence N. 53°33' W., 17.10 chs. dist., to Angle Point 5, sec. 19;
	thence N. 21°44' W., 8.08 chs. dist., to Angle Point 6, sec. 19, identical with the true point for the center 1/4 sec. cor. of sec. 19;
	thence N. 0°07' E., 39.95 chs. dist., on the N. and S. center line of sec. 19, to the 1/4 sec. cor. of secs. 18 and 19;
	thence S. 89°56' E., 6.74 chs. dist., bet. secs. 18 and 19, to Angle Point 1, sec. 18;
	thence N. 40°30' E., 5.05 chs. dist., to Angle Point 2, sec. 18;
	thence N. 18°11' W., 14.91 chs. dist., to Angle Point 3, sec. 18;
	thence N. 22°13' E., 12.10 chs. dist., to Angle Point 4, sec. 18;
	thence N. 42°24' W., 6.71 chs. dist., to Angle Point 5, sec. 18;
	thence N. 3°28' E., 3.66 chs. dist., to Angle Point 6, sec. 18;
	thence S. 89°43' W., 11.83 chs. dist., to Angle Point 7, sec. 18;

Survey of the Legal Descriptive Boundary
of the Aravaipa Canyon Wilderness Area,

Tps. 7 S., Rs. 18 and 19 E. and

Tps. 6 S., Rs. 17 thru 19 E., Gila and Salt River Meridian, Arizona

CHAINS	
	thence N. 45°06' W., 2.46 chs. dist., to Angle Point 8, sec. 18;
	thence N. 19°20' E., 3.50 chs. dist., to Angle Point 9, sec. 18;
	thence N. 84°51' E., 5.54 chs. dist., to Angle Point 10, sec. 18;
	thence S. 53°09' W., 6.29 chs. dist., to Angle Point 11, sec. 18;
	thence S. 87°06' E., 11.46 chs. dist., to Angle Point 12, sec. 18;
	thence N. 42°43' E., 5.19 chs. dist., to Angle Point 13, sec. 18;
	thence N. 82°33' E., 4.16 chs. dist., to Angle Point 14, sec. 18;
	thence N. 32°10' E., 4.37 chs. dist., to Angle Point 15, sec. 18;
	thence N. 52°11' E., 17.87 chs. dist., to Angle Point 16, sec. 18;
	thence N. 19°03' E., 7.57 chs. dist., to Angle Point 17, sec. 18;
	thence N. 64°43' E., 9.05 chs. dist., to Angle Point 18, sec. 18, identical with Angle Point 1, sec. 17, on the line bet. secs. 17 and 18;
	thence N. 63°40' E., 8.72 chs. dist., to Angle Point 2, sec. 17;
	thence N. 24°59' E., 3.66 chs. dist., to Angle Point 3, sec. 17;
	thence N. 72°13' E., 3.90 chs. dist., to Angle Point 4, sec. 17;
	thence N. 31°24' E., 3.00 chs. dist., to Angle Point 5, sec. 17, identical with Angle Point 1, sec. 8, on the line bet. secs. 8 and 17;
	thence N. 49°52' E., 6.90 chs. dist., to Angle Point 2, sec. 8;
	thence N. 88°11' E., 2.48 chs. dist., to Angle Point 3, sec. 8;
	thence N. 17°53' E., 2.74 chs. dist., to Angle Point 4, sec. 8;
	thence N. 44°28' E., 2.16 chs. dist., to Angle Point 5, sec. 8;
	thence S. 87°54' E., 3.67 chs. dist., to Angle Point 6, sec. 8;
	thence N. 31°18' E., 3.59 chs. dist., to Angle Point 7, sec. 8;
	thence N. 57°43' E., 1.94 chs. dist., to Angle Point 8, sec. 8;
	thence N. 78°51' E., 1.37 chs. dist., to Angle Point 9, sec. 8;
	thence N. 16°00' E., 4.51 chs. dist., to Angle Point 10, sec. 8;
	thence N. 33°53' W., 3.75 chs. dist., to Angle Point 11, sec. 8;
	thence N. 9°58' W., 2.50 chs. dist., to Angle Point 12, sec. 8;
	thence N. 39°08' E., 5.28 chs. dist., to Angle Point 13, sec. 8;
	thence N. 57°08' W., 4.18 chs. dist., to Angle Point 14, sec. 8;
	thence N. 30°27' W., 4.20 chs. dist., to Angle Point 15, sec. 8;
	thence N. 69°38' W., 4.64 chs. dist., to Angle Point 16, sec. 8;
	thence N. 36°18' W., 8.60 chs. dist., to Angle Point 17, sec. 8;
	thence N. 84°11' W., 18.25 chs. dist., to Angle Point 18, sec. 8;
	thence N. 22°52' W., 12.54 chs. dist., to Angle Point 19, sec. 8, identical with Angle Point 1, sec. 7, on the line bet. secs. 7 and 8;
	thence N. 74°04' W., 9.69 chs. dist., to Angle Point 2, sec. 7;
	thence N. 4°48' E., 7.95 chs. dist., to Angle Point 3, sec. 7;
	thence N. 37°09' W., 8.34 chs. dist., to Angle Point 4, sec. 7;
	thence N. 17°48' E., 10.70 chs. dist., to Angle Point 5, sec. 7, identical with Angle Point 6, sec. 7, on the line bet. secs. 6 and 7;

Survey of the Legal Descriptive Boundary
of the Aravaipa Canyon Wilderness Area,
Tps. 7 S., Rs. 18 and 19 E. and

Tps. 6 S., Rs. 17 thru 19 E., Gila and Salt River Meridian, Arizona

CHAINS

thence S. 41°09' W., 5.36 chs. dist., to Angle Point 7, sec. 7;
thence S. 72°02' W., 6.15 chs. dist., to Angle Point 8, sec. 7,
identical with Angle Point 1, sec. 12, T. 6 S., R. 18 E., on
the line bet. secs. 7 and 12, on the W. bdy. of the Tp.

In Township 6 South, Range 18 East

From Angle Point 1, sec. 12, identical with Angle Point 8,
sec. 7, T. 6 S., R. 19 E., on the line bet. secs. 7 and 12, on
the E. bdy. of the Tp.

thence S. 41°08' W., 3.04 chs. dist., to Angle Point 2, sec. 12;
thence S. 74°25' W., 8.38 chs. dist., to Angle Point 3, sec. 12;
thence S. 50°21' W., 13.00 chs. dist., to Angle Point 4,
sec. 12;
thence S. 28°55' W., 7.96 chs. dist., to Angle Point 5, sec. 12;
thence S. 24°18' W., 6.50 chs. dist., to Angle Point 6, sec. 12;
thence S. 46°26' W., 8.75 chs. dist., to Angle Point 7, sec. 12;
thence S. 63°31' W., 15.42 chs. dist., to Angle Point 8,
sec. 12;
thence S. 81°13' W., 9.61 chs. dist., to Angle Point 9, sec. 12;
thence S. 55°40' W., 4.95 chs. dist., to Angle Point 10,
sec. 12;
thence S. 61°20' W., 8.92 chs. dist., to Angle Point 11,
sec. 12;
thence S. 17°16' W., 6.20 chs. dist., to Angle Point 12,
sec. 12;
thence S. 54°06' E., 9.09 chs. dist., to Angle Point 13,
sec. 12;
thence S. 38°08' W., 13.41 chs. dist., to Angle Point 14,
sec. 12;
thence S. 61°28' W., 6.69 chs. dist., to Angle Point 15,
sec. 12, identical with Angle Point 1, sec. 13, on the line
bet. secs. 12 and 13;
thence S. 33°59' W., 5.52 chs. dist., to Angle Point 2, sec. 13,
on the line bet. secs. 13 and 14;
thence S. 0°06' W., 15.35 chs. dist., bet. secs. 13 and 14, to
the N. 1/16 sec. cor. of secs. 13 and 14;
thence S. 89°58' W., 39.93 chs. dist., on the E. and W. center
line of the NE 1/4 of sec. 14, to the center N. 1/16 sec.
cor. of sec. 14;
thence N. 0°07' W., 19.945 chs. dist., on the N. and S. center
line of sec. 14, to the 1/4 sec. cor. of secs. 11 and 14,
identical with Angle Point 1, sec. 11;
thence N. 89°59' E., 40.01 chs. dist., bet. secs. 11 and 14, to
the cor. of secs. 11, 12, 13 and 14, identical with Angle
Point 2, sec. 11, identical with Angle Point 16, sec. 12;
thence N. 36°40' E., 9.20 chs. dist., to Angle Point 17,
sec. 12;
thence N. 20°24' E., 5.82 chs. dist., to Angle Point 18,
sec. 12;

**Survey of the Legal Descriptive Boundary
of the Aravaipa Canyon Wilderness Area,**

Tps. 7 S., Rs. 18 and 19 E. and

Tps. 6 S., Rs. 17 thru 19 E., Gila and Salt River Meridian, Arizona

CHAINS	
	thence N. 41°09' W., 2.80 chs. dist., to Angle Point 19, sec. 12;
	thence N. 22°46' E., 9.41 chs. dist., to Angle Point 20, sec. 12;
	thence S. 73°50' W., 5.09 chs. dist., to Angle Point 21, sec. 12;
	thence S. 2°06' E., 7.67 chs. dist., to Angle Point 22, sec. 12;
	thence S. 54°44' W., 5.72 chs. dist., to Angle Point 23, sec. 12, identical with Angle Point 3, sec. 11, on the line bet. secs. 11 and 12;
	thence N. 63°05' W., 16.49 chs. dist., to Angle Point 4, sec. 11;
	thence N. 65°25' W., 6.32 chs. dist., to Angle Point 5, sec. 11;
	thence N. 45°57' W., 7.18 chs. dist., to Angle Point 6, sec. 11;
	thence N. 64°43' W., 9.56 chs. dist., to Angle Point 7, sec. 11;
	thence N. 15°36' W., 3.90 chs. dist., to Angle Point 8, sec. 11;
	thence N. 37°58' E., 10.07 chs. dist., to Angle Point 9, sec. 11;
	thence N. 4°51' E., 4.47 chs. dist., to Angle Point 10, sec. 11;
	thence N. 22°16' W., 8.64 chs. dist., to Angle Point 11, sec. 11;
	thence N. 28°49' W., 3.70 chs. dist., to Angle Point 12, sec. 11;
	thence N. 52°50' W., 1.60 chs. dist., to Angle Point 13, sec. 11;
	thence S. 62°48' W., 5.33 chs. dist., to Angle Point 14, sec. 11;
	thence S. 36°28' W., 3.92 chs. dist., to Angle Point 15, sec. 11;
	thence S. 10°23' W., 3.57 chs. dist., to Angle Point 16, sec. 11;
	thence S. 22°47' W., 4.42 chs. dist., to Angle Point 17, sec. 11;
	thence N. 87°08' W., 3.34 chs. dist., to Angle Point 18, sec. 11;
	thence S. 28°24' W., 8.60 chs. dist., to Angle Point 19, sec. 11;
	thence S. 87°27' W., 3.06 chs. dist., to Angle Point 20, sec. 11;
	thence S. 43°57' W., 8.69 chs. dist., to Angle Point 21, sec. 11;
	thence S. 67°07' W., 5.83 chs. dist., to Angle Point 22, sec. 11;
	thence S. 70°52' W., 12.09 chs. dist., to Angle Point 23, sec. 11;
	thence S. 5°02' E., 0.88 chs. dist., to Angle Point 24, sec. 11;
	thence S. 77°58' W., 1.22 chs. dist., to Angle Point 25, sec. 11;
	thence N. 3°04' W., 1.80 chs. dist., to Angle Point 26, sec. 11;
	thence N. 75°05' E., 1.09 chs. dist., to Angle Point 27, sec. 11;
	thence N. 63°23' E., 7.31 chs. dist., to Angle Point 28, sec. 11;

Survey of the Legal Descriptive Boundary
of the Aravaipa Canyon Wilderness Area,
Tps. 7 S., Rs. 18 and 19 E. and
Tps. 6 S., Rs. 17 thru 19 E., Gila and Salt River Meridian, Arizona

CHAINS	
	thence N. 67°30' E., 3.50 chs. dist., to Angle Point 29, sec. 11;
	thence N. 77°24' E., 6.27 chs. dist., to Angle Point 30, sec. 11;
	thence N. 39°19' E., 5.86 chs. dist., to Angle Point 31, sec. 11;
	thence N. 54°14' E., 3.97 chs. dist., to Angle Point 32, sec. 11;
	thence S. 87°39' E., 2.35 chs. dist., to Angle Point 33, sec. 11;
	thence N. 32°45' E., 9.24 chs. dist., to Angle Point 34, sec. 11;
	thence S. 84°52' E., 3.03 chs. dist., to Angle Point 35, sec. 11;
	thence N. 22°03' E., 2.94 chs. dist., to Angle Point 36, sec. 11;
	thence N. 8°03' E., 2.22 chs. dist., to Angle Point 37, sec. 11;
	thence N. 53°49' W., 16.04 chs. dist., to Angle Point 38, sec. 11;
	thence N. 61°10' W., 2.90 chs. dist., to Angle Point 39, sec. 11;
	thence S. 64°00' W., 7.97 chs. dist., to Angle Point 40, sec. 11;
	thence N. 61°24' W., 8.47 chs. dist., to Angle Point 41, sec. 11;
	thence N. 14°32' W., 12.03 chs. dist., to Angle Point 42, sec. 11;
	thence S. 88°11' W., 3.56 chs. dist., to Angle Point 43, sec. 11, identical with Angle Point 1, sec. 10, on the line bet. secs. 10 and 11;
	thence S. 88°11' W., 7.42 chs. dist., to Angle Point 2, sec. 10;
	thence S. 49°10' E., 6.06 chs. dist., to Angle Point 3, sec. 10;
	thence N. 69°20' W., 3.20 chs. dist., to Angle Point 4, sec. 10;
	thence S. 83°06' W., 14.42 chs. dist., to Angle Point 5, sec. 10;
	thence N. 86°01' W., 6.99 chs. dist., to Angle Point 6, sec. 10;
	thence S. 13°25' W., 3.63 chs. dist., to Angle Point 7, sec. 10;
	thence S. 42°53' W., 3.34 chs. dist., to Angle Point 8, sec. 10;
	thence S. 70°51' W., 3.12 chs. dist., to Angle Point 9, sec. 10;
	thence S. 20°46' W., 3.40 chs. dist., to Angle Point 10, sec. 10;
	thence S. 34°09' E., 5.05 chs. dist., to Angle Point 11, sec. 10;
	thence S. 28°27' W., 9.38 chs. dist., to Angle Point 12, sec. 10;
	thence S. 70°38' W., 4.28 chs. dist., to Angle Point 13, sec. 10;
	thence S. 85°29' W., 3.22 chs. dist., to Angle Point 14, sec. 10;
	thence S. 52°18' W., 5.48 chs. dist., to Angle Point 15, sec. 10;
	thence S. 81°38' W., 4.84 chs. dist., to Angle Point 16, sec. 10;

Survey of the Legal Descriptive Boundary
of the Aravaipa Canyon Wilderness Area,
Tps. 7 S., Rs. 18 and 19 E. and

Tps. 6 S., Rs. 17 thru 19 E., Gila and Salt River Meridian, Arizona

CHAINS

thence S. 85°17' W., 1.58 chs. dist., to Angle Point 17, sec. 10;
 thence S. 67°27' W., 9.69 chs. dist., to Angle Point 18, sec. 10;
 thence S. 74°11' W., 7.97 chs. dist., to Angle Point 19, sec. 10;
 thence S. 36°35' W., 5.73 chs. dist., to Angle Point 20, sec. 10;
 thence S. 78°01' W., 6.13 chs. dist., to Angle Point 21, sec. 10, identical with Angle Point 1, sec. 9, on the line bet. secs. 9 and 10;
 thence S. 49°46' W., 6.13 chs. dist., to Angle Point 2, sec. 9;
 thence S. 42°26' W., 6.05 chs. dist., to Angle Point 3, sec. 9;
 thence S. 35°20' W., 3.52 chs. dist., to Angle Point 4, sec. 9;
 thence S. 74°01' W., 2.03 chs. dist., to Angle Point 5, sec. 9;
 thence N. 36°14' E., 10.58 chs. dist., to Angle Point 6, sec. 9;
 thence N. 33°21' E., 5.60 chs. dist., to Angle Point 7, sec. 9;
 thence N. 16°38' W., 5.36 chs. dist., to Angle Point 8, sec. 9;
 thence N. 54°07' E., 4.84 chs. dist., to Angle Point 9, sec. 9;
 thence N. 6°20' W., 7.78 chs. dist., to Angle Point 10, sec. 9;
 thence N. 60°24' W., 10.17 chs. dist., to Angle Point 11, sec. 9;
 thence N. 31°21' E., 4.96 chs. dist., to Angle Point 12, sec. 9;
 thence S. 81°27' E., 8.27 chs. dist., to Angle Point 13, sec. 9, identical with Angle Point 22, sec. 10, on the line bet. secs. 9 and 10;
 thence N. 36°34' E., 4.36 chs. dist., to Angle Point 23, sec. 10;
 thence N. 1°45' E., 8.80 chs. dist., to Angle Point 24, sec. 10;
 thence N. 50°51' E., 7.65 chs. dist., to Angle Point 25, sec. 10;
 thence S. 82°06' E., 4.64 chs. dist., to Angle Point 26, sec. 10;
 thence N. 1°18' E., 7.58 chs. dist., to Angle Point 27, sec. 10;
 thence N. 9°15' E., 0.34 chs. dist., to Angle Point 28, sec. 10, identical with Angle Point 1, sec. 3, on the line bet. secs. 3 and 10;
 thence N. 9°15' E., 12.77 chs. dist., to Angle Point 2, sec. 3;
 thence N. 8°20' E., 5.87 chs. dist., to Angle Point 3, sec. 3;
 thence N. 24°20' E., 6.33 chs. dist., to Angle Point 4, sec. 3;
 thence N. 71°23' E., 8.16 chs. dist., to Angle Point 5, sec. 3;
 thence N. 36°26' E., 5.13 chs. dist., to Angle Point 6, sec. 3;
 thence N. 45°59' E., 8.37 chs. dist., to Angle Point 7, sec. 3;
 thence N. 1°34' W., 3.97 chs. dist., to Angle Point 8, sec. 3;
 thence N. 85°13' E., 4.15 chs. dist., to Angle Point 9, sec. 3, on the N. and S. center line of sec. 3;
 thence N. 0°02' W., 32.72 chs. dist., on the N. and S. center line of sec. 3, to the 1/4 sec. cor. of sec. 3 only, on the First Standard Parallel South;
 thence S. 89°55' W., 4.44 chs. dist., on the First Standard Parallel South, to the standard 1/4 sec. cor. of sec. 34;
 thence N. 89°59' W., 35.54 chs. dist., on the First Standard Parallel South to the closing cor. of secs. 3 and 4;

**Survey of the Legal Descriptive Boundary
of the Aravaipa Canyon Wilderness Area,
Tps. 7 S., Rs. 18 and 19 E. and**

Tps. 6 S., Rs. 17 thru 19 E., Gila and Salt River Meridian, Arizona

CHAINS

thence N. 89°59' W., 4.41 chs. dist., on the First Standard Parallel South to the standard cor. of secs. 33 and 34;
 thence S. 89°43' W., 23.56 chs. dist., on the First Standard Parallel South to Angle Point 1, sec. 4;
 thence S. 28°00' W., 5.79 chs. dist., to Angle Point 2, sec. 4;
 thence S. 44°14' W., 12.45 chs. dist., to Angle Point 3, sec. 4;
 thence S. 71°54' W., 24 55chs. dist., to Angle Point 4, sec. 4;
 thence S. 87°44' W., 6.85 chs. dist., to Angle Point 5, sec. 4;
 thence S. 26°00' E., 4.00 chs. dist., to Angle Point 6, sec. 4;
 thence S. 27°41' W., 1.95 chs. dist., to Angle Point 7, sec. 4;
 thence S. 56°56' E., 2.18 chs. dist., to Angle Point 8, sec. 4;
 thence S. 13°21' E., 2.62 chs. dist., to Angle Point 9, sec. 4;
 thence S. 22°48' W., 5.39 chs. dist., to Angle Point 10, sec. 4;
 thence S. 0°13' W., 7.10 chs. dist., to Angle Point 11, sec. 4;
 thence S. 17°39' E., 2.45 chs. dist., to Angle Point 12, sec. 4;
 thence S. 38°40' W., 5.07 chs. dist., to Angle Point 13, sec. 4;
 thence S. 86°17' W., 4.91 chs. dist., to Angle Point 14, sec. 4;
 thence S. 70°49' W., 4.67 chs. dist., to Angle Point 15, sec. 4,
 identical with Angle Point 1, sec. 5, on the line bet. secs. 4 and 5;
 thence S. 38°16' W., 8.78 chs. dist., to Angle Point 2, sec. 5;
 thence S. 15°48' W., 2.91 chs. dist., to Angle Point 3, sec. 5;
 thence S. 12°01' E., 3.76 chs. dist., to Angle Point 4, sec. 5;
 thence S. 34°24' W., 7.00 chs. dist., to Angle Point 5, sec. 5;
 thence S. 44°45' W., 4.69 chs. dist., to Angle Point 6, sec. 5,
 identical with Angle Point 1, sec. 8, on the line bet. secs. 5 and 8;
 thence S. 20°08' W., 8.14 chs. dist., to Angle Point 2, sec. 8;
 thence S. 26°05' W., 8.97 chs. dist., to Angle Point 3, sec. 8;
 thence S. 12°50' W., 8.60 chs. dist., to Angle Point 4, sec. 8;
 thence S. 67°28' E., 8.18 chs. dist., to Angle Point 5, sec. 8;
 thence S. 41°52' E., 5.22 chs. dist., to Angle Point 6, sec. 8;
 thence S. 27°29' E., 4.37 chs. dist., to Angle Point 7, sec. 8;
 thence S. 23°44' W., 2.60 chs. dist., to Angle Point 8, sec. 8;
 thence S. 47°52' W., 5.06 chs. dist., to Angle Point 9, sec. 8;
 thence S. 49°47' W., 2.79 chs. dist., to Angle Point 10, sec. 8;
 thence N. 83°45' W., 4.89 chs. dist., to Angle Point 11, sec. 8;
 thence N. 78°14' W., 10.01 chs. dist., to Angle Point 12,
 sec. 8;
 thence S. 44°02' W., 4.81 chs. dist., to Angle Point 13, sec. 8;
 thence S. 29°22' W., 2.26 chs. dist., to Angle Point 14, sec. 8;
 thence S. 60°48' W., 3.89 chs. dist., to Angle Point 15, sec. 8;
 thence N. 87°26' W., 3.71 chs. dist., to Angle Point 16, sec. 8;
 thence N. 53°39' W., 8.66 chs. dist., to Angle Point 17, sec. 8;
 thence N. 31°43' W., 8.67 chs. dist., to Angle Point 18, sec. 8;
 thence N. 81°45' W., 4.77 chs. dist., to Angle Point 19, sec. 8;
 thence S. 86°47' W., 15.38 chs. dist., to Angle Point 20,
 sec. 8;
 thence S. 34°27' W., 4.35 chs. dist., to Angle Point 21, sec. 8;
 thence N. 33°06' W., 5.52 chs. dist., to Angle Point 22, sec. 8;
 thence S. 70°07' W., 1.51 chs. dist., to Angle Point 23, sec. 8,
 identical with Angle Point 1, sec. 7, on the line bet. secs. 7 and 8;
 thence S. 88°49' W., 2.93 chs. dist., to Angle Point 2, sec. 7;

Survey of the Legal Descriptive Boundary
of the Aravaipa Canyon Wilderness Area,
Tps. 7 S., Rs. 18 and 19 E. and

Tps. 6 S., Rs. 17 thru 19 E., Gila and Salt River Meridian, Arizona

CHAINS

thence S. 29°19' W., 8.65 chs. dist., to Angle Point 2A, sec. 7;
thence S. 36°08' W., 3.72 chs. dist., to Angle Point 2B, sec. 7;
thence N. 51°21' W., 3.12 chs. dist., to Angle Point 2C, sec. 7;
thence N. 17°32' E., 2.62 chs. dist., to Angle Point 2D, sec. 7;
thence N. 19°13' E., 7.52 chs. dist., to Angle Point 2E, sec. 7;
thence N. 69°16' W., 1.53 chs. dist., to Angle Point 2F, sec. 7;
thence N. 0°14' E., 2.88 chs. dist., to Angle Point 3, sec. 7;
thence N. 26°25' W., 20.97 chs. dist., to Angle Point 4, sec. 7;
thence S. 75°53' W., 2.98 chs. dist., to Angle Point 5, sec. 7;
thence S. 84°39' W., 10.53 chs. dist., to Angle Point 6, sec. 7;
thence S. 81°30' W., 9.30 chs. dist., to Angle Point 7, sec. 7;
thence N. 43°04' W., 5.09 chs. dist., to Angle Point 8, sec. 7;
thence S. 73°15' W., 5.08 chs. dist., to Angle Point 9, sec. 7;
thence N. 81°26' W., 5.74 chs. dist., to Angle Point 10, sec. 7;
thence N. 60°07' W., 5.12 chs. dist., to Angle Point 11, sec. 7;
thence N. 66°56' W., 4.71 chs. dist., to Angle Point 12, sec. 7;
thence S. 27°36' W., 9.41 chs. dist., to Angle Point 13, sec. 7;
thence S. 71°52' W., 8.90 chs. dist., to Angle Point 14, sec. 7;
thence S. 42°14' W., 3.72 chs. dist., to Angle Point 15, sec. 7;
thence S. 80°54' W., 4.91 chs. dist., to Angle Point 16, sec. 7;
thence S. 17°09' E., 1.40 chs. dist., to Angle Point 17, sec. 7;
thence S. 25°43' W., 3.16 chs. dist., to Angle Point 18, sec. 7,
on the line bet. secs. 7 and 12, on the W. bdy. of the Tp.

In Township 6 South, Range 17 East

From Angle Point 18, sec. 7, T. 6 S., R. 18 E., on the line bet. secs. 7 and 12, on the E. bdy. of the Tp.

thence S. 0°01' E., 14.28 chs. dist., on the line bet. secs. 7 and 12, on the E. bdy. of the Tp., to the 1/4 sec. cor. of sec. 7, T. 6 S., R. 18 E. only;
thence S. 0°02' E., 6.27 chs. dist., on the line bet. secs. 7 and 12, on the E. bdy. of the Tp., to the true point for the 1/4 sec. cor. of sec. 12, T. 6 S., R. 17 E. only;
thence N. 89°26' W., 20.11 chs. dist., on the E. and W. center line of sec. 12, to the E. 1/16 sec. cor. of sec. 12;
thence S. 0°08' W., 39.35 chs. dist., on the N. and S. center line of the SE 1/4 of sec. 12, to the E. 1/16 sec. cor. of secs. 12 and 13;
thence S. 89°58' W., 19.97 chs. dist., on the line bet. secs. 12 and 13, to the 1/4 sec. cor. of secs. 12 and 13;
thence S. 0°02' W., 79.40 chs. dist., on the N. and S. center line of sec. 13, to the 1/4 sec. cor. of secs. 13 and 24;
thence S. 0°52' W., 26.60 chs. dist., on the N. and S. center line of sec. 24, to Angle Point 1, sec. 24;
thence S. 69°29' E., 5.73 chs. dist., to Angle Point 2, sec. 24;
thence S. 23°08' E., 2.84 chs. dist., to Angle Point 3, sec. 24;
thence S. 83°00' E., 3.94 chs. dist., to Angle Point 4, sec. 24;
thence S. 1°17' W., 2.94 chs. dist., to Angle Point 5, sec. 24;
thence S. 62°12' W., 5.26 chs. dist., to Angle Point 6, sec. 24;
thence S. 47°55' W., 5.57 chs. dist., to Angle Point 7, sec. 24;

Survey of the Legal Descriptive Boundary
of the Aravaipa Canyon Wilderness Area,

Tps. 7 S., Rs. 18 and 19 E. and

Tps. 6 S., Rs. 17 thru 19 E., Gila and Salt River Meridian, Arizona

CHAINS

thence S. 32°59' W., 3.31 chs. dist., to Angle Point 8, sec. 24;
thence S. 0°52' W., 12.94 chs. dist., on the N. and S. center
line of sec. 24, to Angle Point 9, sec. 24;
thence N. 71°14' E., 1.96 chs. dist., to Angle Point 10,
sec. 24;
thence S. 56°56' E., 5.45 chs. dist., to Angle Point 11,
sec. 24;
thence S. 88°36' E., 4.90 chs. dist., to Angle Point 12,
sec. 24;
thence S. 50°18' E., 5.89 chs. dist., to Angle Point 13,
sec. 24;
thence S. 45°52' E., 6.24 chs. dist., to Angle Point 14,
sec. 24;
thence S. 77°17' E., 4.45 chs. dist., to Angle Point 15,
sec. 24;
thence N. 60°03' E., 2.87 chs. dist., to Angle Point 16,
sec. 24;
thence S. 52°27' E., 7.87 chs. dist., to Angle Point 17,
sec. 24;
thence S. 41°48' E., 5.40 chs. dist., to Angle Point 18,
sec. 24;
thence N. 80°08' E., 4.17 chs. dist., to Angle Point 19,
sec. 24, identical with Angle Point 1, sec. 19, T. 6 S.,
R. 18 E., on the line bet. secs. 19 and 24, on the E. bdy. of
the Tp.

In Township 6 South, Range 18 East

From Angle Point 1, sec. 19, identical with Angle Point 19,
sec. 24, T. 6 S., R. 17 E., on the line bet. secs. 19 and 24, on
the W. bdy. of the Tp.

thence N. 48°53' E., 3.09 chs. dist., Angle Point 2, sec. 19;
thence N. 75°23' E., 9.28 chs. dist., Angle Point 3, sec. 19;
thence S. 46°01' E., 3.16 chs. dist., Angle Point 4, sec. 19;
thence S. 45°39' W., 3.79 chs. dist., Angle Point 5, sec. 19,
identical with Angle Point 1, sec. 30, on the line bet. secs.
19 and 30;
thence S. 45°39' W., 3.00 chs. dist., Angle Point 2, sec. 30;
thence S. 61°10' W., 6.86 chs. dist., Angle Point 3, sec. 30;
thence S. 13°20' W., 3.03 chs. dist., Angle Point 4, sec. 30;
thence S. 63°42' E., 5.20 chs. dist., Angle Point 5, sec. 30;
thence S. 52°26' E., 2.38 chs. dist., Angle Point 6, sec. 30;
thence S. 85°04' E., 7.76 chs. dist., Angle Point 7, sec. 30;
thence S. 72°59' E., 14.42 chs. dist., Angle Point 8, sec. 30;
thence N. 56°13' E., 3.03 chs. dist., Angle Point 9, sec. 30;
thence S. 71°37' E., 2.00 chs. dist., Angle Point 10, sec. 30;
thence S. 65°58' E., 6.48 chs. dist., Angle Point 11, sec. 30;
thence S. 72°12' E., 8.78 chs. dist., Angle Point 12, sec. 30;
thence S. 60°06' E., 10.08 chs. dist., Angle Point 13, sec. 30;
thence S. 50°14' E., 5.72 chs. dist., Angle Point 14, sec. 30;
thence S. 51°59' E., 2.84 chs. dist., Angle Point 15, sec. 30;

Survey of the Legal Descriptive Boundary
of the Aravaipa Canyon Wilderness Area,
Tps. 7 S., Rs. 18 and 19 E. and

Tps. 6 S., Rs. 17 thru 19 E., Gila and Salt River Meridian, Arizona

CHAINS

thence S. 58°05' E., 11.27 chs. dist., Angle Point 16, sec. 30;
thence S. 38°16' E., 3.88 chs. dist., Angle Point 17, sec. 30;
thence S. 58°24' E., 3.53 chs. dist., Angle Point 18, sec. 30;
thence S. 42°22' E., 10.26 chs. dist., Angle Point 19, sec. 30,
identical with Angle Point 1, sec. 29, on the line bet.
secs. 29 and 30;
thence S. 46°53' E., 4.49 chs. dist., Angle Point 2, sec. 29;
thence S. 37°12' E., 8.93 chs. dist., Angle Point 3, sec. 29;
thence S. 70°52' E., 3.04 chs. dist., Angle Point 4, sec. 29;
thence S. 60°00' E., 13.57 chs. dist., Angle Point 5, sec. 29;
thence S. 30°24' E., 3.99 chs. dist., Angle Point 6, sec. 29;
thence S. 61°08' E., 17.46 chs. dist., Angle Point 7, sec. 29,
identical with Angle Point 1, sec. 32, on the line bet. secs.
29 and 32;
thence S. 66°35' E., 12.98 chs. dist., Angle Point 2, sec. 32;
thence S. 66°07' E., 15.74 chs. dist., Angle Point 3, sec. 32;
thence S. 50°45' E., 11.51 chs. dist., Angle Point 4, sec. 32;
thence S. 31°26' E., 7.24 chs. dist., Angle Point 5, sec. 32;
thence S. 0°18' E., 5.29 chs. dist., Angle Point 6, sec. 32;
thence S. 14°13' W., 4.90 chs. dist., Angle Point 7, sec. 32;
thence S. 41°42' E., 2.52 chs. dist., Angle Point 8, sec. 32,
identical with Angle Point 1, sec. 33, on the line bet.
secs. 32 and 33.
thence S. 64°32' E., 1.96 chs. dist., Angle Point 2, sec. 33;
thence S. 34°40' E., 8.44 chs. dist., Angle Point 3, sec. 33;
thence S. 70°31' E., 12.74 chs. dist., Angle Point 4, sec. 33;
thence S. 47°54' E., 4.54 chs. dist., Angle Point 5, sec. 33;
thence S. 30°44' E., 4.10 chs. dist., Angle Point 6, sec. 33;
thence S. 48°25' E., 10.13 chs. dist., Angle Point 7, sec. 33;
thence S. 49°36' E., 4.72 chs. dist., Angle Point 8, sec. 33;
thence S. 69°03' E., 11.69 chs. dist., Angle Point 9, sec. 33;
thence S. 59°41' E., 8.67 chs. dist., Angle Point 10, sec. 33;
thence S. 50°25' E., 7.30 chs. dist., Angle Point 11, sec. 33;
thence S. 34°05' E., 1.74 chs. dist., Angle Point 12, sec. 33,
identical with Angle Point 1, sec. 4, T. 7 S., R. 18 E., on
the line bet. secs. 33 and 4, on the S. bdy. of the Tp., the
point of beginning.

The following parcels within the Legal Descriptive Boundary are
excluded from the Aravaipa Canyon Wilderness Area:

SW 1/4 SE 1/4, SE 1/4 SW 1/4, sec. 17, T. 6 S., R. 18 E.;
W 1/2 NE 1/4, SE 1/4, E 1/2 NW 1/4, sec. 20, T. 6 S., R. 18 E.;
NE 1/4, N 1/2 SE 1/4, sec. 29, T. 6 S., R. 18 E.;
Portion of the NW 1/4 SW 1/4, sec. 33, T. 6 S., R. 18 E.;
Portion of the NW 1/4, sec. 14, T. 7 S., R. 18 E.;

The above-described Survey of the Legal Descriptive Boundary of
the Aravaipa Canyon Wilderness Area contains 19,617 acres, more
or less.

CERTIFICATE OF SURVEY

These composite field notes constitute the legal description of the Aravaipa Canyon Wilderness Area, as required by Public Law 101-628, "Arizona Desert Wilderness Act of 1990", TITLE 1, SEC. 101. (c).

The preceding field note record of the survey of the descriptive boundary of the Aravaipa Canyon Wilderness Area in Townships 7 South, Ranges 18 and 19 East, and Townships 6 South, Ranges 17 thru 19 East, Gila and Salt River Meridian, Arizona, was executed in compliance with the provisions as set forth in Public Law 101-628, "Arizona Desert Wilderness Act of 1990" and in pursuance of the Special Instructions dated January 17, 2001, and Supplemental Special Instructions dated February 14, 2011, for Group No. 860, Arizona; that said survey has been made in strict conformity with said special instructions, the Manual of Instructions for the Survey of the Public Lands of the United States, and in specific manner described in the foregoing field notes.

CERTIFICATE OF APPROVAL

BUREAU OF LAND MANAGEMENT
Arizona State Office
Phoenix, Arizona

The foregoing field notes of the survey of the descriptive boundary of the Aravaipa Canyon Wilderness Area in Townships 7 South, Ranges 18 and 19 East, and Townships 6 South, Ranges 17 thru 19 East, Gila and Salt River Meridian, Arizona, executed by Gordon R. Bubel and Geoffrey A. Graham, Cadastral Surveyors, having been critically examined and found correct, are hereby approved.

3/30/2011

(Date)

Stephen K. Hansen
(Chief Cadastral Surveyor of Arizona)

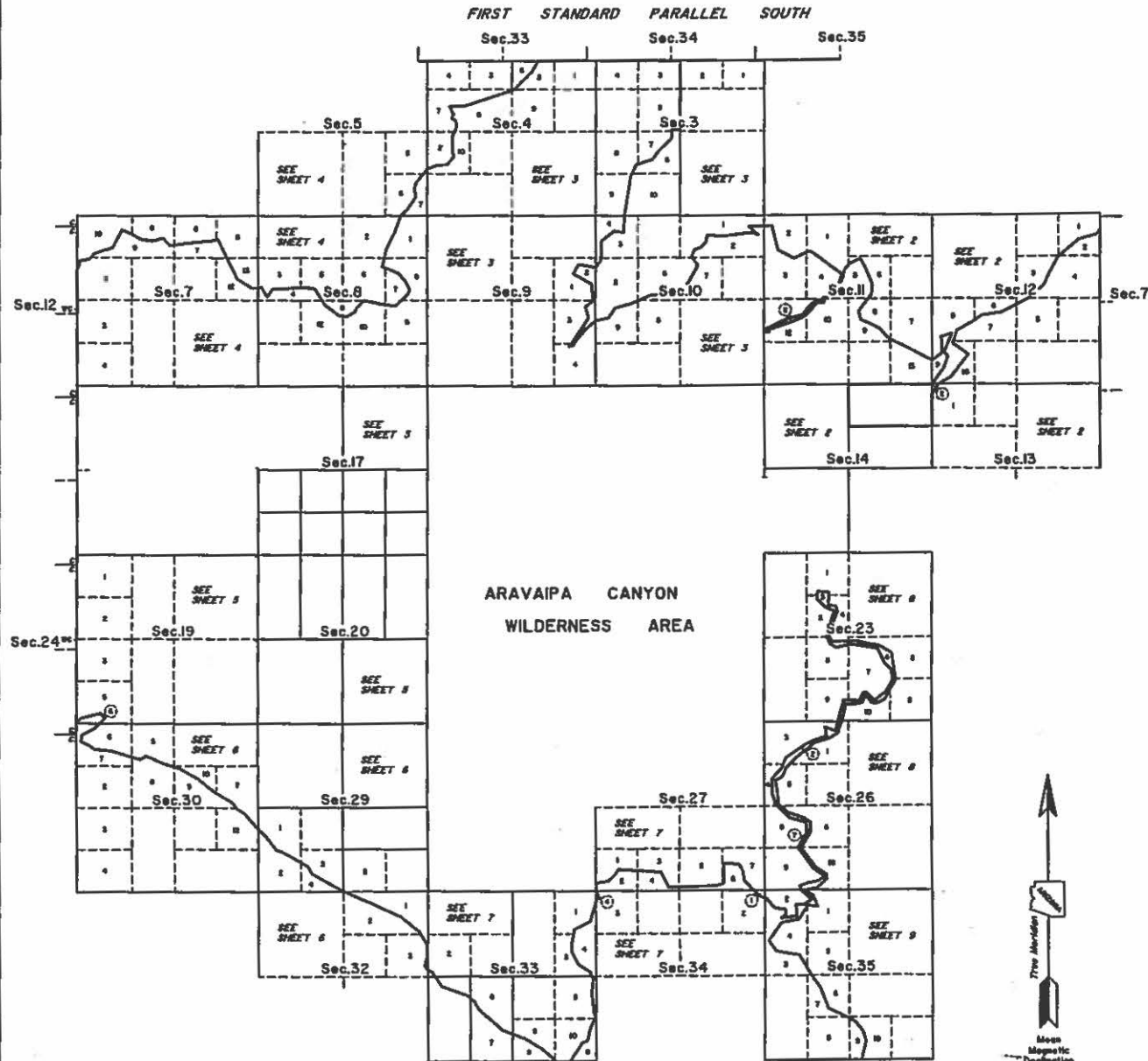
~~CERTIFICATE OF TRANSCRIPT~~

~~I CERTIFY that the foregoing transcript of the field notes of the above described surveys in Townships 7 South, Ranges 18 and 19 East, and Townships 6 South, Ranges 17 thru 19 East, Gila and Salt River Meridian, Arizona, is a true copy of the original field notes.~~

~~(Date)~~

~~(Chief Cadastral Surveyor of Arizona)~~

TOWNSHIP 6 SOUTH, RANGE 18 EAST, OF THE GILA AND SALT RIVER MERIDIAN, ARIZONA 1707-B DEPENDENT RESURVEY AND METES-AND-BOUNDS SURVEY OF THE ARAVAIPA CANYON WILDERNESS BOUNDARY



The history of surveys is contained in the field notes.

This plat represents the dependent resurvey of a portion of the First Standard Parallel South, (north boundary) and a portion of the subdivision lines, designed to restore the corners in their true original locations according to the best available evidence: the subdivision of sections 3, 14, 17, 20, 23 and 33, and the metes-and-bounds survey of the Aravaipa Canyon Wilderness Area Boundary in Township 6 South, Range 18 East, Gila and Salt River Meridian, Arizona.

Except as indicated hereon, the lettings and areas are as shown on the plat approved December 7, 1923, accepted February 3, 1930.

The survey was executed by Gordon R. Babel, Cadastral Surveyor, beginning March 27, 2001, and completed April 21, 2003, pursuant to Special Instructions dated January 17, 2001, for Group No. 660, Arizona.

ARAVAIPA CANYON
WILDERNESS AREA

UNITED STATES DEPARTMENT OF THE INTERIOR
BUREAU OF LAND MANAGEMENT

Phoenix, Arizona July 8, 2003

This plat is strictly conformable to the approved field notes, and the survey, having been correctly executed in accordance with the requirements of law and the regulations of this Bureau, is hereby accepted.

For the Director

Stephen K. Hamann

Acting Chief Cadastral Surveyor of Arizona

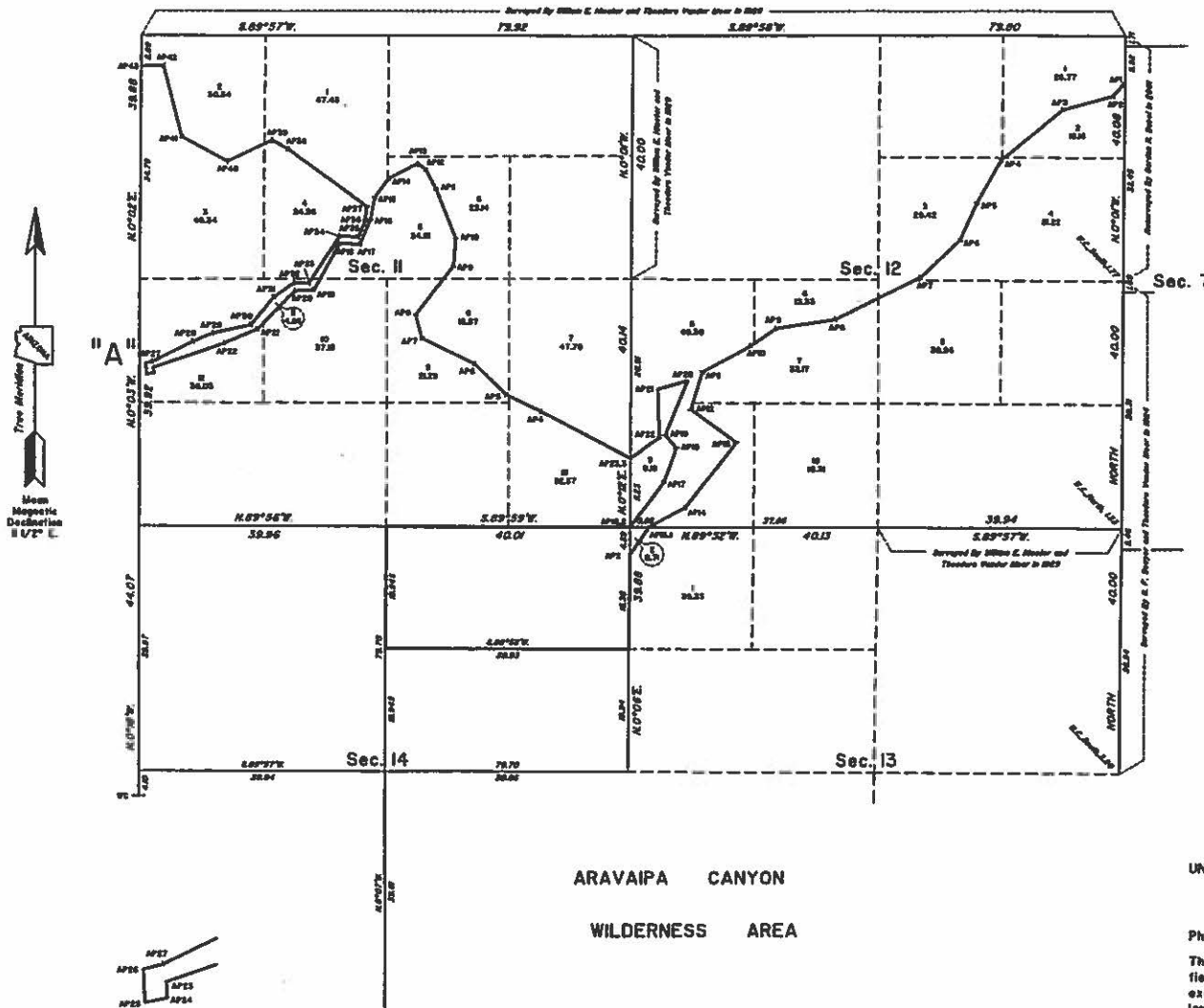


TOWNSHIP 6 SOUTH, RANGE 18 EAST, OF THE GILA AND SALT RIVER MERIDIAN, ARIZONA

1707-C

DEPENDENT RESURVEY AND METES-AND-BOUNDS SURVEY OF THE ARAVAIPA CANYON WILDERNESS BOUNDARY

Refer to sheet 1 for survey information.



LINE	BEARING	DISTANCE
METERS-AND-BOUNDS IN SECTION 12		
AP1-2	S. 41°08'W	3.04
AP2-3	S. 74°25'W	8.38
AP3-4	S. 30°21'W	13.00
AP4-5	S. 28°58'W	7.96
AP5-6	S. 34°19'W	6.50
AP6-7	S. 48°25'W	8.73
AP7-8	S. 63°31'W	15.42
AP8-9	S. 51°15'W	9.51
AP9-10	S. 58°40'W	8.85
AP10-11	S. 61°20'W	8.82
AP11-12	S. 17°18'W	6.20
AP12-13	S. 54°05'W	9.88
AP13-14	S. 38°08'W	13.41
AP14-15	S. 61°28'W	6.63
METERS-AND-BOUNDS IN SECTION 13		
AP1-2	S. 33°59'W	5.82
METERS-AND-BOUNDS IN SECTION 12		
AP16-17	N. 36°40'E	8.20
AP17-18	N. 20°24'E	5.82
AP18-19	N. 41°09'W	2.80
AP19-20	N. 22°48'E	9.41
AP20-21	S. 73°50'W	9.88
AP21-22	S. 2°08'E	7.67
AP22-23	S. 54°44'W	5.72
METERS-AND-BOUNDS IN SECTION 11		
AP3-4	N. 63°05'W	16.48
AP4-5	N. 60°25'W	6.32
AP5-6	N. 40°57'W	7.18
AP6-7	N. 64°43'W	9.56
AP7-8	N. 18°36'W	3.90
AP8-9	N. 37°50'E	10.07
AP9-10	N. 4°51'E	4.47
AP10-11	N. 22°16'W	8.84
AP11-12	N. 38°49'W	3.70
AP12-13	N. 32°50'W	1.80
AP13-14	S. 62°48'W	8.53
AP14-15	S. 36°28'W	3.82
AP15-16	S. 10°23'W	3.87
AP16-17	S. 22°47'W	4.42
AP17-18	N. 67°08'W	3.34
AP18-19	S. 28°24'W	8.60
AP19-20	S. 67°27'W	3.06
AP20-21	S. 43°37'W	8.88
AP21-22	S. 67°07'W	5.83
AP22-23	S. 70°32'W	12.08
AP23-24	S. 39°32'E	0.88
AP24-25	S. 77°58'W	1.82
AP25-26	N. 3°04'W	1.80
AP26-27	N. 75°05'E	1.09
AP27-28	N. 63°23'E	7.31
AP28-29	N. 67°30'E	3.50
AP29-30	N. 77°24'E	6.27
AP30-31	N. 39°19'E	8.86
AP31-32	N. 54°14'E	3.97
AP32-33	S. 67°39'E	2.35
AP33-34	N. 36°45'E	9.24
AP34-35	S. 94°52'E	3.03
AP35-36	N. 22°03'E	2.94
AP36-37	N. 8°05'E	2.22
AP37-38	N. 53°49'W	16.04
AP38-39	N. 61°10'W	2.90
AP39-40	S. 64°00'W	7.97
AP40-41	N. 61°24'W	8.47
AP41-42	N. 14°52'W	12.03
AP42-43	S. 89°11'W	3.56

DETAIL "A"
NO SCALE

ARAVAIPA CANYON
WILDERNESS AREA

UNITED STATES DEPARTMENT OF THE INTERIOR
BUREAU OF LAND MANAGEMENT

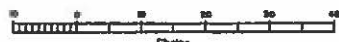
Phoenix, Arizona July 11, 2005

This plat is strictly conformable to the approved field notes, and the survey, having been correctly executed in accordance with the requirements of law and the regulations of this Bureau, is hereby accepted.

For the Director

Stephen K. Hansen

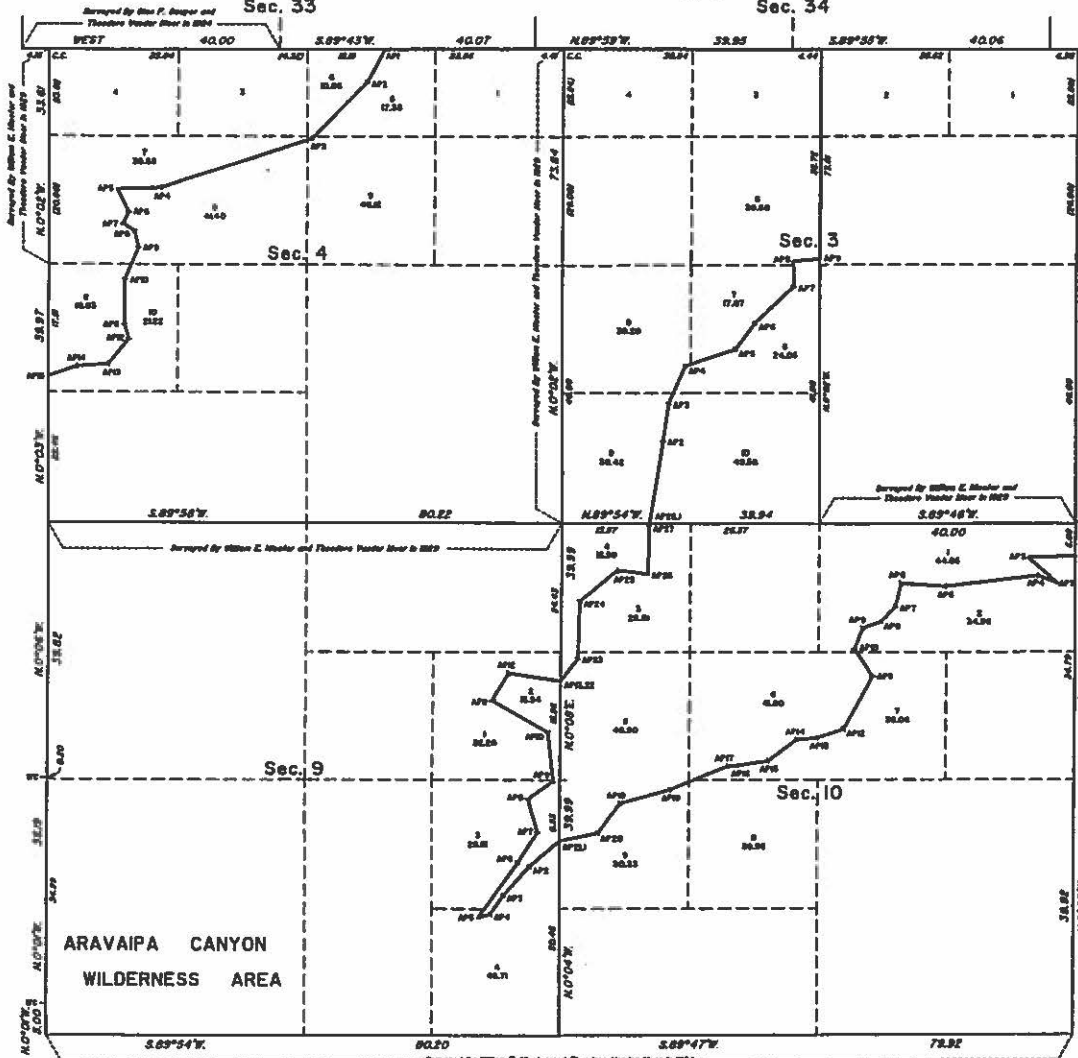
Acting Chief Cadastral Surveyor of Arizona



TOWNSHIP 6 SOUTH, RANGE 18 EAST, OF THE GILA AND SALT RIVER MERIDIAN, ARIZONA 1707-D

DEPENDENT RESURVEY AND METES-AND-BOUNDS SURVEY OF THE ARAVAIPA CANYON WILDERNESS BOUNDARY

FIRST STANDARD PARALLEL SOUTH



LINE	BEARING	DISTANCE
METERS-AND-BOUNDS IN SECTION 10		
AP1-2	S. 89° 11' W.	7.42
AP2-3	S. 89° 10' E.	6.08
AP3-4	N. 89° 20' W.	3.20
AP4-5	S. 85° 08' W.	14.42
AP5-6	N. 88° 01' W.	6.89
AP6-7	S. 13° 28' W.	3.63
AP7-8	S. 48° 53' W.	3.54
AP8-9	S. 70° 51' W.	3.12
AP9-10	S. 20° 46' W.	3.40
AP10-11	S. 34° 08' E.	5.05
AP11-12	S. 22° 27' W.	9.39
AP12-13	S. 70° 38' W.	4.28
AP13-14	S. 80° 28' W.	3.22
AP14-15	S. 58° 18' W.	5.48
AP15-16	S. 81° 36' W.	4.84
AP16-17	S. 88° 17' W.	1.58
AP17-18	S. 87° 27' W.	9.89
AP18-19	S. 74° 11' W.	7.87
AP19-20	S. 58° 35' W.	6.73
AP20-21	S. 78° 01' W.	6.13
METERS-AND-BOUNDS IN SECTION 9		
AP1-2	S. 48° 46' W.	6.13
AP2-3	S. 42° 28' W.	6.05
AP3-4	S. 38° 20' W.	3.52
AP4-5	S. 74° 01' E.	2.05
AP5-6	N. 38° 14' E.	10.58
AP6-7	N. 33° 21' E.	5.60
AP7-8	N. 18° 38' W.	5.36
AP8-9	N. 84° 07' E.	4.84
AP9-10	N. 6° 20' W.	7.78
AP10-11	N. 60° 24' W.	10.17
AP11-12	N. 31° 21' E.	4.96
AP12-13	S. 81° 27' E.	8.27
METERS-AND-BOUNDS IN SECTION 10		
AP22-23	N. 38° 34' E.	4.38
AP23-24	N. 1° 45' E.	8.80
AP24-25	N. 20° 31' E.	7.65
AP25-26	S. 82° 08' E.	4.84
AP26-27	N. 1° 18' E.	7.59
AP27-28	N. 9° 18' E.	0.34
METERS-AND-BOUNDS IN SECTION 3		
AP1-2	N. 9° 18' E.	12.77
AP2-3	N. 6° 20' E.	5.87
AP3-4	N. 24° 20' E.	6.33
AP4-5	N. 71° 23' E.	9.16
AP5-6	N. 36° 28' E.	6.15
AP6-7	N. 48° 38' E.	8.37
AP7-8	N. 1° 34' W.	3.97
AP8-9	N. 89° 13' E.	4.15
METERS-AND-BOUNDS IN SECTION 4		
AP1-2	S. 29° 00' W.	5.79
AP2-3	S. 44° 14' W.	18.48
AP3-4	S. 71° 54' W.	24.53
AP4-5	S. 67° 44' W.	6.80
AP5-6	S. 29° 00' E.	4.00
AP6-7	S. 27° 41' W.	1.95
AP7-8	S. 56° 56' E.	2.18
AP8-9	S. 13° 21' E.	2.62
AP9-10	S. 22° 48' W.	5.36
AP10-11	S. 0° 13' W.	7.10
AP11-12	S. 17° 36' E.	2.43
AP12-13	S. 33° 40' W.	5.07
AP13-14	S. 88° 17' W.	4.81
AP14-15	S. 70° 49' W.	4.87

UNITED STATES DEPARTMENT OF THE INTERIOR
BUREAU OF LAND MANAGEMENT

Phoenix, Arizona July 8, 2005

This plat is strictly conformable to the approved field notes, and the survey, having been correctly executed in accordance with the requirements of law and the regulations of this Bureau, is hereby accepted.

For the Director

Stephen K. Hansen

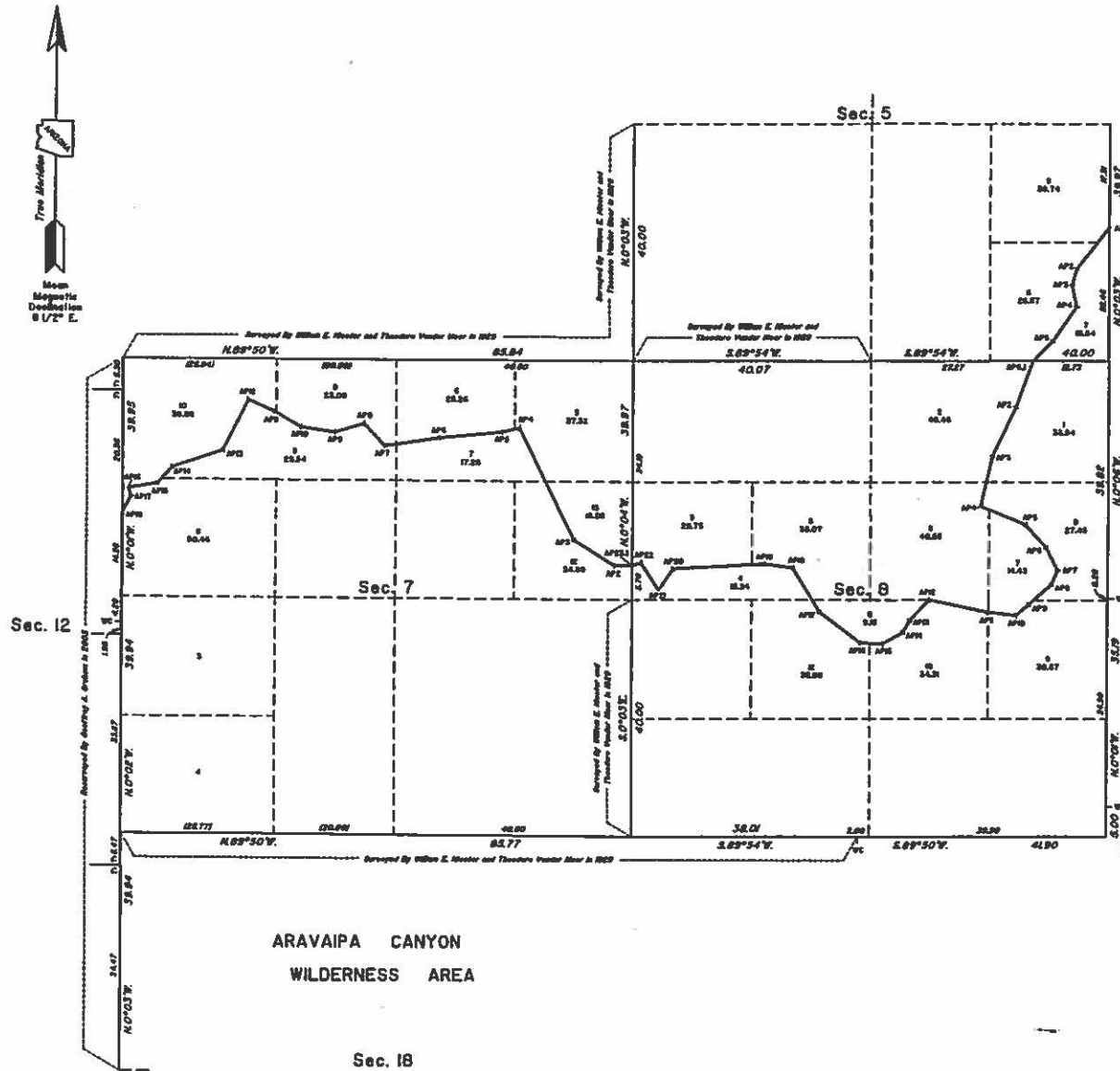
Acting Chief Cadastral Surveyor of Arizona

Refer to sheet 1 for survey information.



TOWNSHIP 6 SOUTH, RANGE 18 EAST, OF THE GILA AND SALT RIVER MERIDIAN, ARIZONA
1707-E
DEPENDENT RESURVEY AND METES-AND-BOUNDS SURVEY OF THE ARAVAIPA CANYON WILDERNESS BOUNDARY

Refer to sheet 1 for survey information.



LINE	BEARING	DISTANCE
METERS-AND-BOUNDS IN SECTION 5		
AP1-2	S. 38° 16' W.	8.78
AP2-3	S. 18° 48' W.	2.91
AP3-4	S. 12° 01' E.	3.78
AP4-5	S. 34° 24' W.	7.00
AP5-6	S. 44° 48' W.	4.69
METERS-AND-BOUNDS IN SECTION 8		
AP1-2	S. 20° 08' W.	8.14
AP2-3	S. 28° 05' W.	8.97
AP3-4	S. 12° 50' W.	8.60
AP4-5	S. 67° 28' E.	8.16
AP5-6	S. 41° 52' E.	5.22
AP6-7	S. 27° 29' E.	4.37
AP7-8	S. 25° 44' W.	2.60
AP8-9	S. 47° 25' W.	2.06
AP9-10	S. 49° 47' W.	2.79
AP10-11	N. 83° 45' W.	4.88
AP11-12	N. 78° 14' W.	10.01
AP12-13	S. 44° 08' W.	4.81
AP13-14	S. 23° 22' W.	2.28
AP14-15	S. 60° 48' W.	3.89
AP15-16	N. 87° 28' W.	3.71
AP16-17	N. 33° 58' W.	8.66
AP17-18	N. 31° 43' W.	8.67
AP18-19	N. 81° 48' W.	4.77
AP19-20	S. 68° 47' W.	15.38
AP20-21	S. 34° 27' W.	4.35
AP21-22	N. 33° 08' W.	5.52
AP22-23	S. 70° 07' W.	1.81
METERS-AND-BOUNDS IN SECTION 7		
AP1-2	S. 86° 49' W.	2.83
AP2-3	N. 87° 47' W.	9.29
AP3-4	N. 36° 28' W.	20.87
AP4-5	S. 75° 53' W.	2.88
AP5-6	S. 84° 38' W.	10.83
AP6-7	S. 81° 30' W.	8.30
AP7-8	N. 43° 04' W.	8.08
AP8-9	S. 73° 13' W.	5.08
AP9-10	N. 91° 25' W.	5.74
AP10-11	N. 50° 07' W.	5.12
AP11-12	N. 68° 04' W.	4.71
AP12-13	S. 27° 36' W.	9.41
AP13-14	S. 71° 52' W.	8.80
AP14-15	S. 43° 14' W.	3.72
AP15-16	S. 80° 54' W.	4.91
AP16-17	S. 17° 08' E.	1.40
AP17-18	S. 25° 43' W.	3.16

UNITED STATES DEPARTMENT OF THE INTERIOR
BUREAU OF LAND MANAGEMENT

Phoenix, Arizona July 11, 2005

This plat is strictly conformable to the approved field notes, and the survey, having been correctly executed in accordance with the requirements of law and the regulations of this Bureau, is hereby accepted.

For the Director

Stephen K. Hansen

Acting Chief/Codirector Surveyor of Arizona



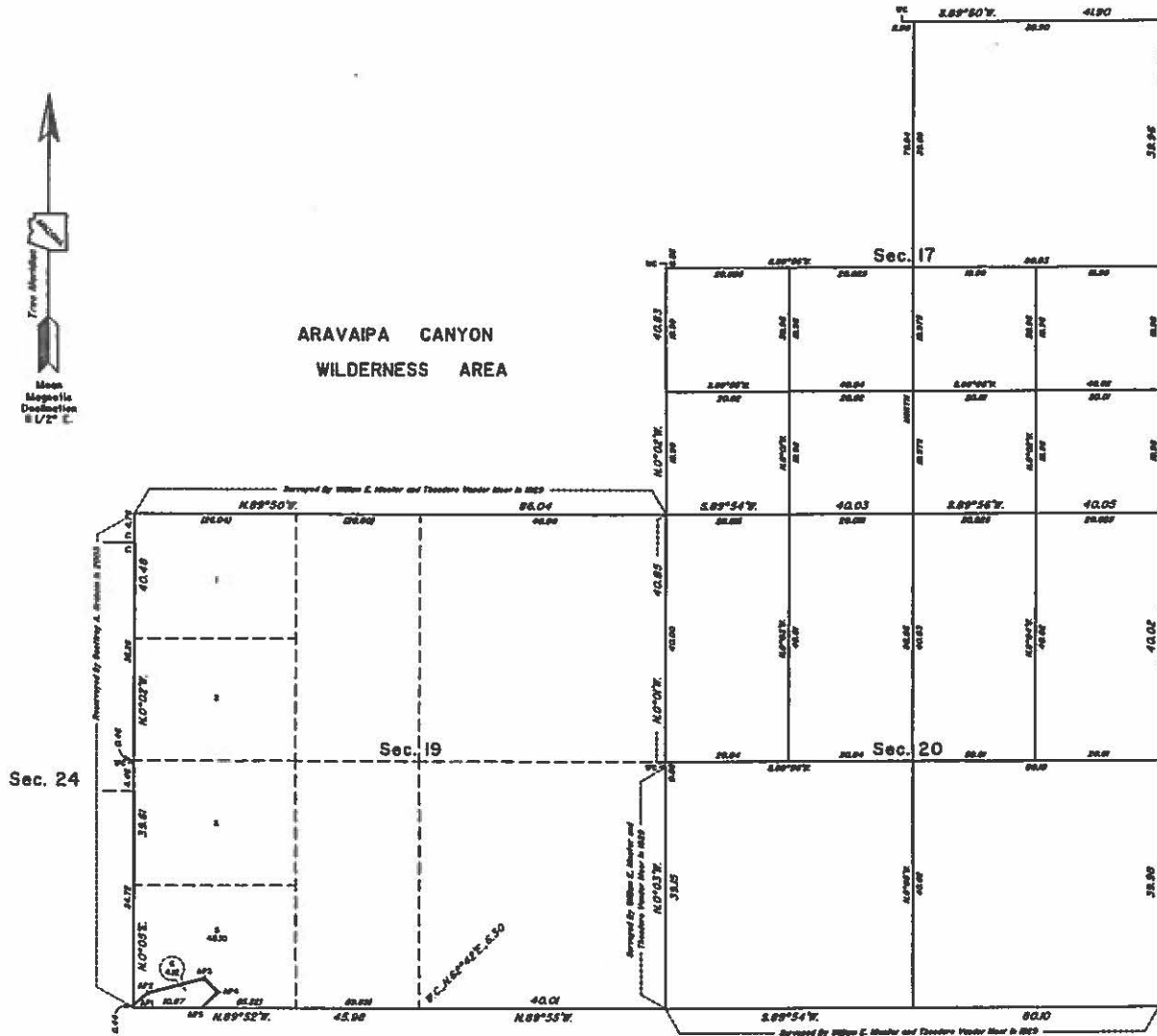
TOWNSHIP 6 SOUTH, RANGE 18 EAST, OF THE GILA AND SALT RIVER MERIDIAN, ARIZONA
1707-F
DEPENDENT RESURVEY AND METES-AND-BOUNDS SURVEY OF THE ARAVAIPA CANYON WILDERNESS BOUNDARY



ARAVAIPA CANYON
WILDERNESS AREA

Refer to sheet 1 for survey information.

LINE	BEARING	DISTANCE
METES-AND-BOUNDS IN SECTION 19		
AP1-2	N. 48° 53' E.	3.00
AP2-3	N. 75° 23' E.	9.28
AP3-4	S. 48° 01' E.	3.16
AP4-5	S. 45° 39' W.	3.70



UNITED STATES DEPARTMENT OF THE INTERIOR
BUREAU OF LAND MANAGEMENT

Phoenix, Arizona July 8, 2005

This plat is strictly conformable to the approved field notes, and the survey, having been correctly executed in accordance with the requirements of law and the regulations of this Bureau, is hereby accepted.

For the Director

Stephen K. Hansen

Acting Chief Cadastral Surveyor of Arizona

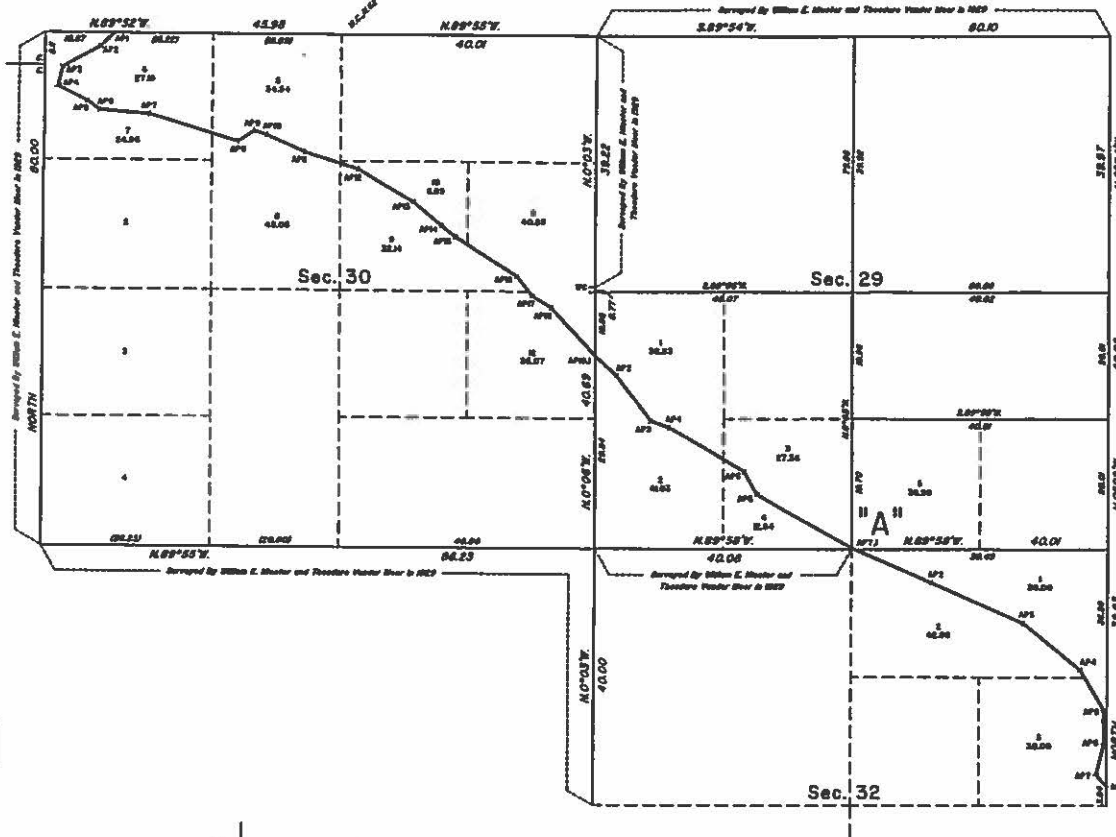


TOWNSHIP 6 SOUTH, RANGE 18 EAST, OF THE GILA AND SALT RIVER MERIDIAN, ARIZONA
1707-G

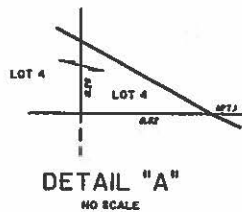
DEPENDENT RESURVEY AND METES-AND-BOUNDS SURVEY OF THE ARAVAIPA CANYON WILDERNESS BOUNDARY

ARAVAIPA CANYON
WILDERNESS AREA

Refer to sheet 1 for survey information.



LINE	BEARING	DISTANCE
METES-AND-BOUNDS IN SECTION 30		
AP1-2	S. 45° 23' W	3.00
AP2-3	S. 61° 10' W	6.96
AP3-4	S. 13° 20' W	3.03
AP4-5	S. 63° 42' E	9.20
AP5-6	S. 82° 28' E	2.36
AP6-7	S. 65° 04' E	7.76
AP7-8	S. 72° 09' E	14.42
AP8-9	N. 54° 13' E	3.03
AP9-10	S. 71° 27' E	3.00
AP10-11	S. 65° 38' E	6.48
AP11-12	S. 72° 12' E	6.78
AP12-13	S. 60° 08' E	10.08
AP13-14	S. 50° 14' E	5.72
AP14-15	S. 51° 09' E	2.84
AP15-16	S. 34° 05' E	11.27
AP16-17	S. 38° 16' E	3.98
AP17-18	S. 58° 24' E	3.33
AP18-19	S. 42° 22' E	10.26
METES-AND-BOUNDS IN SECTION 29		
AP1-2	S. 44° 53' E	4.49
AP2-3	S. 37° 12' E	8.93
AP3-4	S. 70° 52' E	3.04
AP4-5	S. 60° 00' E	13.97
AP5-6	S. 30° 24' E	3.99
AP6-7	S. 51° 08' E	17.46
METES-AND-BOUNDS IN SECTION 32		
AP1-2	S. 66° 35' E	12.98
AP2-3	S. 68° 07' E	15.74
AP3-4	S. 50° 45' E	11.81
AP4-5	S. 31° 26' E	7.24
AP5-6	S. 0° 18' E	5.29
AP6-7	S. 14° 13' W	4.90
AP7-8	S. 41° 42' E	2.55



UNITED STATES DEPARTMENT OF THE INTERIOR
BUREAU OF LAND MANAGEMENT

Phoenix, Arizona July 11, 2005

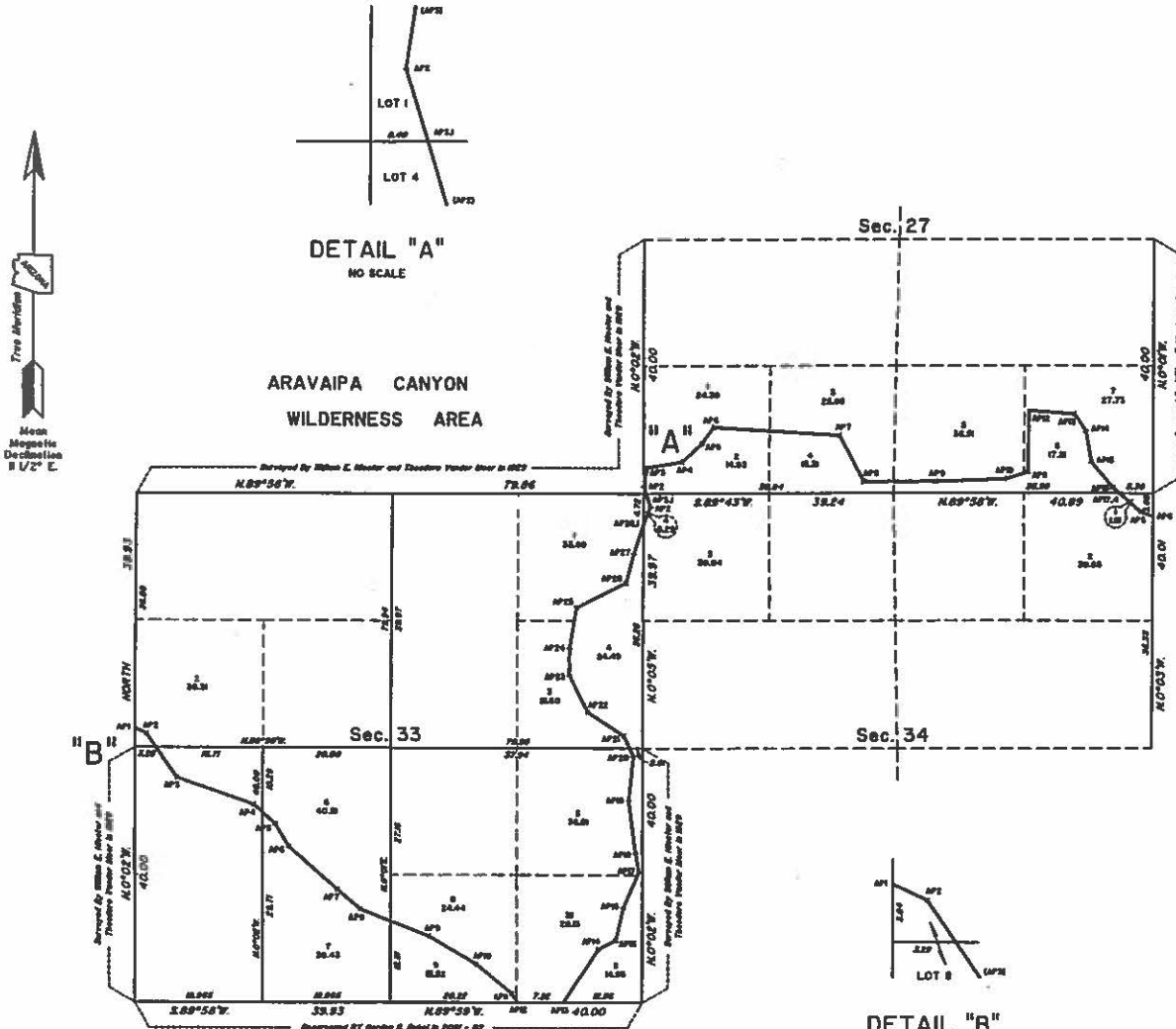
This plot is strictly conformable to the approved field notes, and the survey, having been correctly executed in accordance with the requirements of law and the regulations of this Bureau, is hereby accepted.

For the Director

Stephen K. Hansen

Acting Chief Cadastral Surveyor of Arizona

TOWNSHIP 6 SOUTH, RANGE 18 EAST, OF THE GILA AND SALT RIVER MERIDIAN, ARIZONA
1707-H
DEPENDENT RESURVEY AND METES-AND-BOUNDS SURVEY OF THE ARAVAIPA CANYON WILDERNESS BOUNDARY



DETAIL "A"
NO SCALE

DETAIL "B"
NO SCALE

Refer to sheet 1 for survey information.

LINE	BEARING	DISTANCE
METER-AND-BOUNDS IN SECTION 33		
AP1-2	S. 64° 32' E.	1.96
AP2-3	S. 34° 40' E.	9.44
AP3-4	S. 70° 31' E.	12.74
AP4-5	S. 47° 54' E.	4.54
AP5-6	S. 30° 44' E.	4.10
AP6-7	S. 40° 25' E.	10.13
AP7-8	S. 40° 36' E.	4.72
AP8-9	S. 68° 03' E.	11.68
AP9-10	S. 50° 41' E.	9.67
AP10-11	S. 30° 25' E.	7.30
AP11-12	S. 34° 06' E.	1.74
AP13-14	N. 33° 29' E.	10.13
AP14-15	N. 43° 06' E.	3.10
AP15-16	N. 12° 58' E.	2.19
AP16-17	N. 24° 22' E.	6.12
AP17-18	N. 11° 40' W.	2.87
AP18-19	N. 7° 31' W.	6.38
AP19-20	N. 8° 10' E.	7.07
AP20-21	N. 23° 24' W.	3.66
AP21-22	N. 87° 16' W.	6.63
AP22-23	N. 27° 24' W.	6.47
AP23-24	N. 0° 01' W.	4.21
AP24-25	N. 0° 54' E.	6.47
AP25-26	N. 63° 43' E.	9.72
AP26-27	N. 18° 23' E.	4.70
AP27-28	N. 17° 36' E.	5.00
METER-AND-BOUNDS IN SECTION 34		
AP1-2	N. 22° 17' E.	2.78
AP2-3	N. 17° 07' W.	2.23
METER-AND-BOUNDS IN SECTION 27		
AP1-2	N. 17° 07' W.	1.21
AP2-3	N. 0° 19' E.	2.91
AP3-4	N. 81° 01' E.	5.64
AP4-5	N. 46° 28' E.	4.30
AP5-6	N. 38° 21' E.	3.09
AP6-7	S. 06° 24' E.	19.90
AP7-8	S. 27° 22' E.	9.13
AP8-9	N. 69° 29' E.	11.61
AP9-10	N. 07° 58' E.	10.81
AP10-11	N. 73° 34' E.	3.66
AP11-12	N. 09° 32' E.	9.67
AP12-13	S. 66° 04' E.	7.16
AP13-14	S. 34° 02' E.	3.25
AP14-15	S. 0° 50' E.	6.60
AP16-16	S. 41° 11' E.	6.18
AP16-17	S. 40° 03' E.	1.45
METER-AND-BOUNDS IN SECTION 34		
AP4-5	S. 40° 03' E.	4.42
AP5-6	S. 70° 41' E.	2.14

UNITED STATES DEPARTMENT OF THE INTERIOR
BUREAU OF LAND MANAGEMENT

Phoenix, Arizona July 11, 2005

This plot is strictly conformable to the approved field notes, and the survey, having been correctly executed in accordance with the requirements of law and the regulations of this Bureau, is hereby accepted.

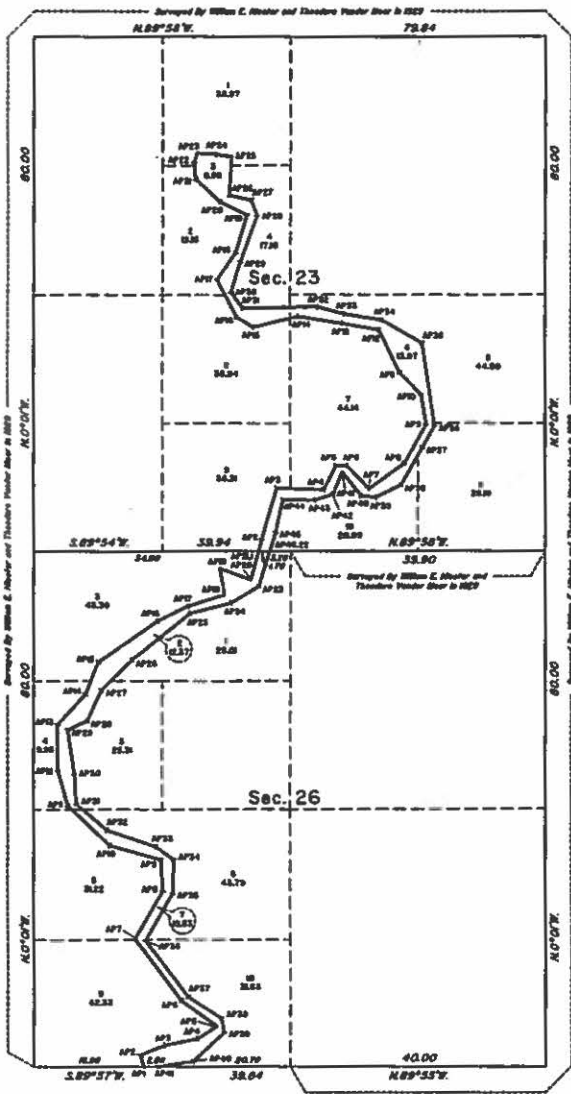
For the Director

Stephen K. Hansen

Acting Chief Cadastral Surveyor of Arizona



TOWNSHIP 6 SOUTH, RANGE 18 EAST, OF THE GILA AND SALT RIVER MERIDIAN, ARIZONA
1707-I
DEPENDENT RESURVEY AND METES-AND-BOUNDS SURVEY OF THE ARAVAIPA CANYON WILDERNESS BOUNDARY



Refer to sheet 1 for survey information.

LINE	BEARING	DISTANCE
METER-AND-BOUNDS IN SECTION 26		
AP1-2	N. 17° 45' W.	1.91
AP2-3	N. 60° 05' E.	4.18
AP3-4	N. 78° 33' E.	5.19
AP4-5	N. 86° 18' E.	3.84
AP5-6	N. 83° 30' W.	6.79
AP6-7	N. 58° 36' W.	12.12
AP7-8	N. 30° 41' E.	6.63
AP8-9	N. 3° 41' W.	4.75
AP9-10	N. 74° 25' W.	8.12
AP10-11	N. 48° 49' W.	9.12
AP11-12	N. 18° 47' W.	5.63
AP12-13	N. 0° 14' W.	7.18
AP13-14	N. 25° 17' E.	6.39
AP14-15	N. 22° 08' E.	5.39
AP15-16	N. 50° 42' E.	11.06
AP16-17	N. 54° 12' E.	5.26
AP17-18	N. 72° 41' E.	8.94
AP18-19	N. 10° 08' W.	4.18
AP19-20	S. 69° 30' E.	5.16
AP20-21	N. 14° 52' E.	4.67
METER-AND-BOUNDS IN SECTION 23		
AP1-2	N. 14° 52' E.	1.92
AP2-3	N. 18° 24' E.	8.44
AP3-4	S. 87° 33' E.	7.32
AP4-5	N. 27° 02' E.	4.27
AP5-6	N. 89° 47' E.	1.64
AP6-7	S. 44° 10' E.	6.12
AP7-8	N. 54° 13' E.	6.81
AP8-9	N. 28° 43' E.	6.89
AP9-10	N. 3° 25' W.	4.70
AP10-11	N. 44° 37' W.	4.83
AP11-12	N. 23° 56' W.	7.40
AP12-13	N. 80° 00' W.	9.92
AP13-14	N. 80° 33' W.	6.94
AP14-15	S. 76° 30' W.	7.19
AP15-16	N. 09° 03' W.	3.06
AP16-17	N. 27° 49' W.	8.60
AP17-18	N. 34° 22' E.	5.17
AP18-19	N. 17° 06' E.	6.04
AP19-20	N. 60° 05' W.	4.89
AP20-21	N. 49° 38' W.	5.20
AP21-22	N. 5° 37' W.	2.64
AP22-23	N. 18° 14' E.	1.48
AP23-24	S. 86° 23' E.	3.01
AP24-25	S. 81° 31' E.	2.36
AP25-26	S. 3° 16' W.	5.95
AP26-27	S. 78° 28' E.	3.84
AP27-28	S. 20° 30' E.	2.82
AP28-29	S. 10° 22' W.	7.56

LINE	BEARING	DISTANCE
METER-AND-BOUNDS IN SECTION 23		
AP29-30	S. 16° 52' W.	4.97
AP30-31	S. 38° 36' E.	3.08
AP31-32	N. 86° 58' E.	11.70
AP32-33	S. 76° 53' E.	4.30
AP33-34	S. 80° 54' E.	6.04
AP34-35	S. 60° 04' E.	7.27
AP35-36	S. 8° 38' E.	15.01
AP36-37	S. 30° 00' W.	3.92
AP37-38	S. 29° 43' W.	6.70
AP38-39	S. 63° 08' W.	4.48
AP39-40	N. 52° 18' W.	2.33
AP40-41	N. 38° 43' W.	4.72
AP41-42	S. 22° 18' W.	3.72
AP42-43	S. 71° 47' W.	3.00
AP43-44	N. 69° 14' W.	4.99
AP44-45	S. 12° 24' W.	5.28
AP45-46	S. 17° 13' W.	3.06
METER-AND-BOUNDS IN SECTION 26		
AP22-23	S. 17° 15' W.	8.80
AP23-24	S. 09° 17' W.	6.08
AP24-25	S. 75° 46' W.	6.54
AP25-26	S. 51° 56' W.	11.41
AP26-27	S. 48° 10' W.	6.80
AP27-28	S. 24° 41' W.	5.27
AP28-29	S. 43° 01' W.	5.37
AP29-30	S. 8° 45' E.	6.96
AP30-31	S. 3° 23' E.	4.66
AP31-32	S. 48° 49' E.	6.31
AP32-33	S. 71° 24' E.	7.96
AP33-34	S. 53° 36' E.	3.43
AP34-35	S. 1° 49' W.	5.12
AP35-36	S. 30° 40' W.	8.44
AP36-37	S. 35° 42' E.	11.10
AP37-38	S. 56° 35' E.	6.24
AP38-39	S. 10° 49' E.	2.20
AP39-40	S. 46° 47' W.	6.86
AP40-41	S. 81° 32' W.	5.63

ARAVAIPA CANYON
WILDERNESS AREA

UNITED STATES DEPARTMENT OF THE INTERIOR
BUREAU OF LAND MANAGEMENT

Phoenix, Arizona July 8, 2005

This plot is strictly conformable to the approved field notes, and the survey, having been correctly executed in accordance with the requirements of law and the regulations of this Bureau, is hereby accepted.

For the Director

Stephen K. Hummel

Acting Chief Cadastral Surveyor of Arizona



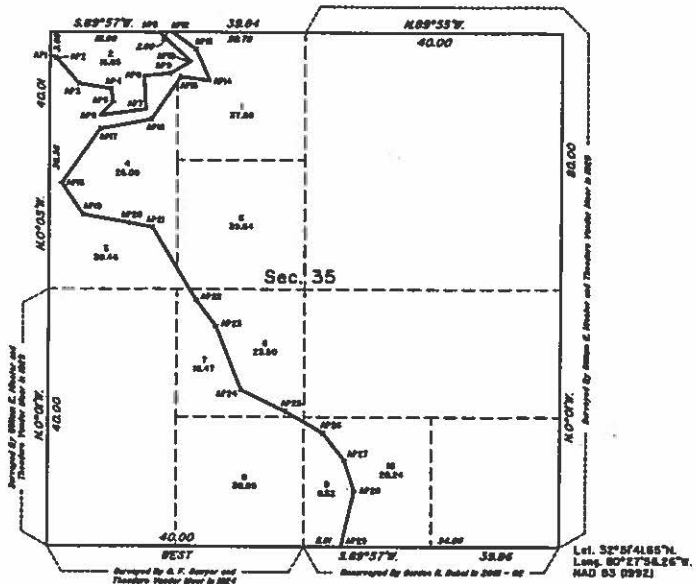
TOWNSHIP 6 SOUTH, RANGE 18 EAST, OF THE GILA AND SALT RIVER MERIDIAN, ARIZONA

1707-J

DEPENDENT RESURVEY AND METES-AND-BOUNDS SURVEY OF THE ARAVAIPA CANYON WILDERNESS BOUNDARY

Refer to sheet 1 for survey information.

ARAVAIPA CANYON
WILDERNESS AREA



LINE	BEARING	DISTANCE
METES-AND-BOUNDS IN SECTION 35		
AP1-2	S. 70° 41' E.	1.00
AP2-3	S. 41° 14' E.	0.31
AP3-4	S. 60° 43' E.	0.07
AP4-5	S. 9° 43' E.	2.09
AP5-6	S. 42° 47' W.	2.92
AP6-7	N. 62° 31' E.	7.15
AP7-8	N. 2° 48' W.	5.25
AP8-9	N. 84° 50' E.	4.07
AP9-10	N. 29° 10' E.	3.74
AP10-11	N. 47° 44' W.	0.74
AP12-13	S. 54° 40' E.	4.31
AP13-14	S. 24° 20' E.	0.90
AP14-15	N. 82° 37' W.	4.37
AP15-16	S. 34° 14' W.	0.08
AP16-17	S. 79° 18' W.	0.16
AP17-18	S. 38° 06' W.	10.35
AP18-19	S. 38° 10' E.	5.87
AP19-20	S. 79° 47' E.	7.27
AP20-21	S. 79° 59' E.	3.78
AP21-22	S. 31° 19' E.	13.21
AP22-23	S. 37° 07' E.	5.17
AP23-24	S. 21° 43' E.	10.00
AP24-25	S. 64° 44' E.	7.01
AP25-26	S. 61° 07' E.	6.09
AP26-27	S. 38° 54' E.	0.34
AP27-28	S. 18° 29' E.	4.93
AP28-29	S. 12° 13' W.	0.90

UNITED STATES DEPARTMENT OF THE INTERIOR
BUREAU OF LAND MANAGEMENT

Phoenix, Arizona July 11, 2005

This plat is strictly conformable to the approved field notes, and the survey, having been correctly executed in accordance with the requirements of law and the regulations of this Bureau, is hereby accepted.

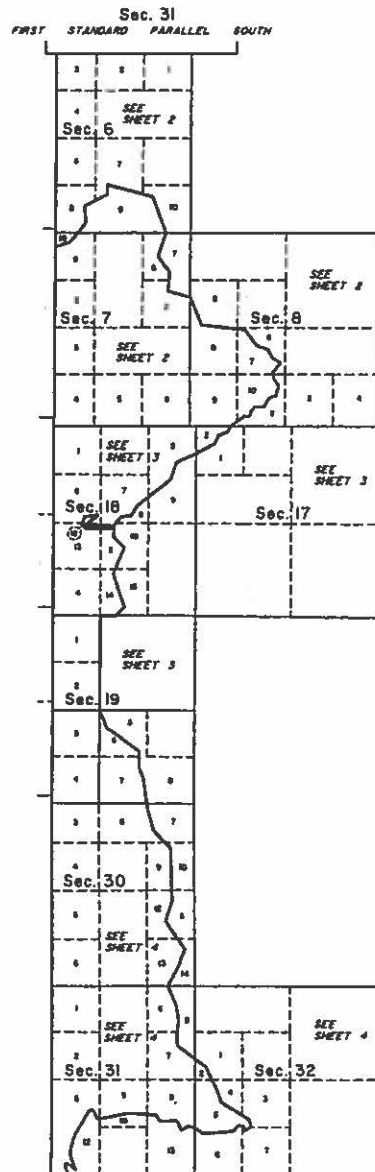
For the Director

Stephen K. Hansen

Acting Chief Cadastral Surveyor of Arizona



TOWNSHIP 6 SOUTH, RANGE 19 EAST, OF THE GILA AND SALT RIVER MERIDIAN, ARIZONA
1708-C
DEPENDENT RESURVEY AND METES-AND-BOUNDS SURVEY OF THE ARAVAIPA CANYON WILDERNESS BOUNDARY



ARAVAIPA CANYON
WILDERNESS AREA



The history of surveys is contained in the field notes.

This plat, in 4 sheets, represents the dependent resurvey of a portion of the south and west boundaries and a portion of the subdivision lines designed to restore the corners in their true original locations according to the best available evidence; the subdivision of section 19, and the metes-and-bounds survey of the Aravaipa Canyon Wilderness Area Boundary in Township 6 South, Range 19 East, Gila and Salt River Meridian, Arizona.

Except as indicated hereon, the lottings and areas are as shown on the plat approved March 20, 1926, accepted June 24, 1926.

This survey was executed by Gordon R. Bubei, Cadastral Surveyor, beginning February 12, 2001, and completed April 19, 2001, pursuant to Special Instructions dated January 17, 2001, for Group No. 860, Arizona.

UNITED STATES DEPARTMENT OF THE INTERIOR
BUREAU OF LAND MANAGEMENT

Phoenix, Arizona January 31, 2003

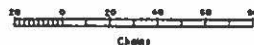
This plat is strictly conformable to the approved field notes, and the survey, having been correctly executed in accordance with the requirements of law and the regulations of this Bureau, is hereby accepted.

For the Director

Gordon R. Bubei

Chief Cadastral Surveyor of Arizona

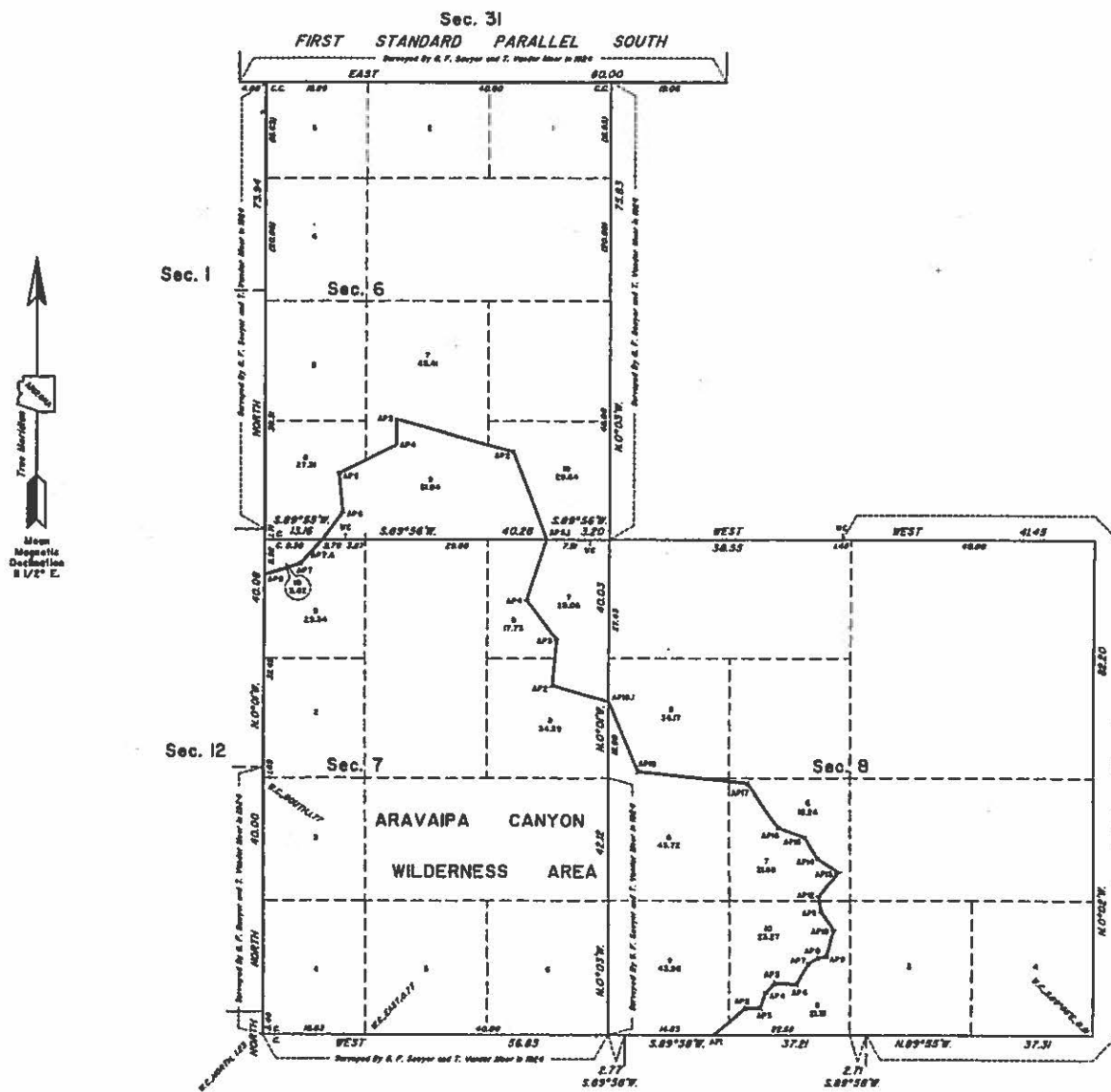
Lat. 32°04'16.97" N
Long. 109°26'08.01" W
NAD 8309921



TOWNSHIP 6 SOUTH, RANGE 19 EAST, OF THE GILA AND SALT RIVER MERIDIAN, ARIZONA

1708-D

DEPENDENT RESURVEY AND METES-AND-BOUNDS SURVEY OF THE ARAVAIPA CANYON WILDERNESS BOUNDARY



Refer to sheet 1 for survey information.

LINE	BEARING	DISTANCE
METES-AND-BOUNDS IN SECTION 8		
AP1-2	N. 49°52' E.	6.90
AP2-3	N. 88°11' E.	2.48
AP3-4	N. 17°53' E.	2.74
AP4-5	N. 44°28' E.	2.16
AP5-6	S. 87°54' E.	3.67
AP6-7	N. 31°18' E.	3.59
AP7-8	N. 57°43' E.	1.94
AP8-9	N. 78°51' E.	1.37
AP9-10	N. 16°00' E.	4.51
AP10-11	N. 33°23' W.	3.75
AP11-12	N. 9°58' W.	2.50
AP12-13	N. 39°08' E.	9.28
AP13-14	N. 57°08' W.	4.18
AP14-15	N. 50°27' W.	4.20
AP15-16	N. 69°38' W.	4.84
AP16-17	N. 36°18' W.	8.60
AP17-18	N. 84°11' W.	18.23
AP18-19	N. 22°58' W.	12.54
METES-AND-BOUNDS IN SECTION 7		
AP1-2	N. 74°04' W.	9.68
AP2-3	N. 4°48' E.	7.98
AP3-4	N. 37°09' W.	9.34
AP4-5	N. 17°48' E.	10.70
METES-AND-BOUNDS IN SECTION 6		
AP1-2	N. 20°31' W.	15.95
AP2-3	N. 74°17' W.	18.93
AP3-4	S. 0°23' E.	4.22
AP4-5	S. 61°51' W.	10.64
AP5-6	S. 8°18' E.	8.67
AP6-7	S. 34°42' W.	5.60
METES-AND-BOUNDS IN SECTION 7		
AP6-7	S. 45°09' W.	5.36
AP7-8	S. 75°02' W.	6.18

UNITED STATES DEPARTMENT OF THE INTERIOR
BUREAU OF LAND MANAGEMENT

Phoenix, Arizona January 31, 2003

This plat is strictly conformable to the approved field notes, and the survey, having been correctly executed in accordance with the requirements of law and the regulations of this Bureau, is hereby accepted.

For the Director

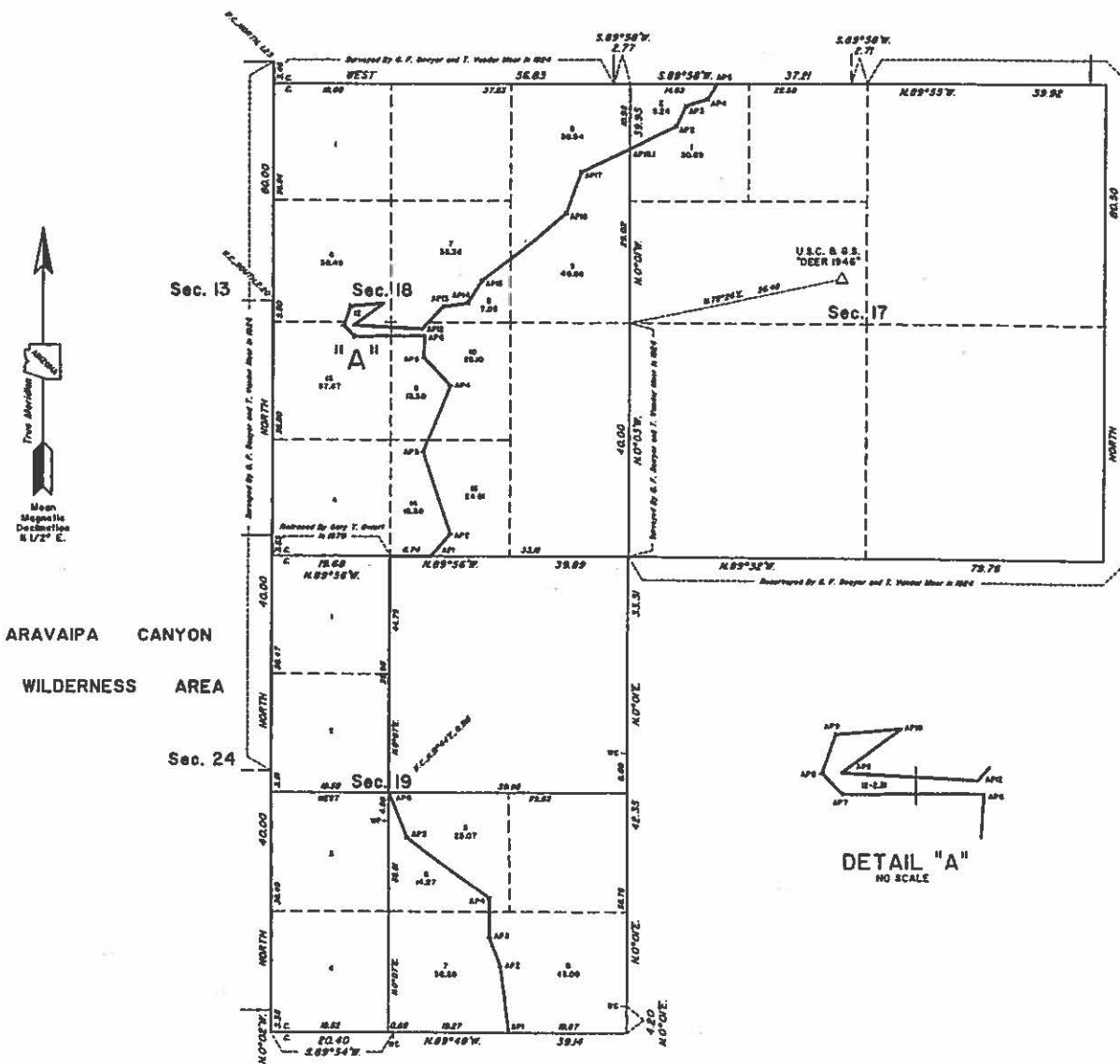
Kenny A. Rowntree
Chief Cadastral Surveyor of Arizona



TOWNSHIP 6 SOUTH, RANGE 19 EAST, OF THE GILA AND SALT RIVER MERIDIAN, ARIZONA

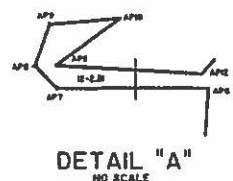
1708-E

DEPENDENT RESURVEY AND METES-AND-BOUNDS SURVEY OF THE ARAVAIPA CANYON WILDERNESS BOUNDARY



Refer to sheet 1 for survey information.

LINE	BEARING	DISTANCE
METES-AND-BOUNDS IN SECTION 13		
AP1-2	N. 7° 52' W	10.79
AP2-3	N. 20° 41' W	5.28
AP3-4	N. 0° 05' E	6.61
AP4-5	N. 53° 33' W	17.10
AP5-6	N. 21° 44' W	8.08
METES-AND-BOUNDS IN SECTION 18		
AP1-2	N. 40° 50' E	5.05
AP2-3	N. 18° 11' W	14.91
AP3-4	N. 22° 13' E	12.10
AP4-5	N. 42° 24' W	6.71
AP5-6	N. 3° 28' E	3.66
AP6-7	S. 89° 43' W	11.83
AP7-8	N. 45° 08' W	2.46
AP8-9	N. 19° 20' E	3.50
AP9-10	N. 64° 51' E	6.54
AP10-11	S. 53° 09' W	6.29
AP11-12	S. 87° 06' E	11.45
AP12-13	N. 42° 43' E	3.19
AP13-14	N. 82° 33' E	4.16
AP14-15	N. 32° 10' E	4.57
AP15-16	N. 82° 11' E	17.87
AP16-17	N. 19° 03' E	7.57
AP17-18	N. 64° 43' E	9.08
METES-AND-BOUNDS IN SECTION 17		
AP1-2	N. 63° 40' E	9.72
AP2-3	N. 24° 59' E	5.66
AP3-4	N. 72° 13' E	3.30
AP4-5	N. 31° 24' E	3.00



UNITED STATES DEPARTMENT OF THE INTERIOR
BUREAU OF LAND MANAGEMENT

Phoenix, Arizona January 31, 2003

This plat is strictly conformable to the approved field notes, and the survey, having been correctly executed in accordance with the requirements of law and the regulations of this Bureau, is hereby accepted.

For the Director

Kenny D. Karstner

Chief Cadastral Surveyor of Arizona



TOWNSHIP 6 SOUTH, RANGE 19 EAST, OF THE GILA AND SALT RIVER MERIDIAN, ARIZONA

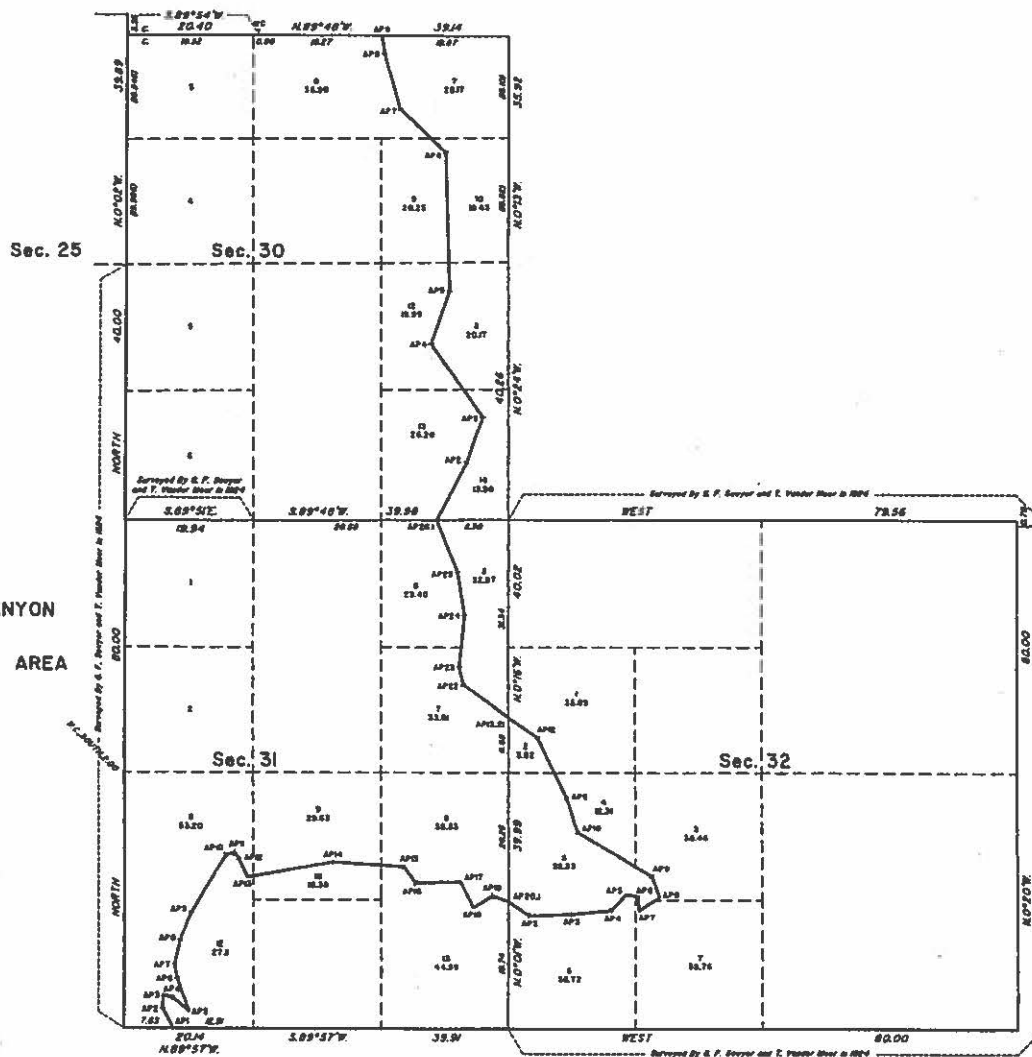
1708-F

DEPENDENT RESURVEY AND METES-AND-BOUNDS SURVEY OF THE ARAVAIPA CANYON WILDERNESS BOUNDARY

Refer to sheet 1 for survey information.



ARAVAIPA CANYON
WILDERNESS AREA



LINE	BEARING	DISTANCE
METES-AND-BOUNDS IN SECTION 31		
AP1-2	N 29° 18' W	3.41
AP2-3	N 1° 36' E	2.01
AP3-4	S 73° 01' E	1.82
AP4-5	S 80° 28' E	3.31
AP5-6	N 18° 38' W	3.81
AP6-7	N 8° 34' W	2.17
AP7-8	N 13° 12' E	3.80
AP8-9	N 20° 54' E	4.76
AP9-10	N 30° 25' E	10.42
AP10-11	N 74° 32' E	1.36
AP11-12	S 53° 10' E	1.24
AP12-13	S 23° 36' E	3.26
AP13-14	N 78° 27' E	13.46
AP14-15	S 08° 04' E	11.18
AP15-16	S 35° 27' E	3.18
AP16-17	N 88° 53' E	7.03
AP17-18	S 27° 44' E	4.48
AP18-19	N 58° 54' E	3.46
AP19-20	S 70° 54' E	2.89
METES-AND-BOUNDS IN SECTION 32		
AP1-2	S 55° 37' E	3.99
AP2-3	N 87° 49' E	6.37
AP3-4	N 84° 31' E	6.29
AP4-5	N 43° 08' E	3.43
AP5-6	S 80° 19' E	1.96
AP6-7	S 3° 23' E	2.16
AP7-8	N 56° 40' E	3.86
AP8-9	N 21° 20' W	3.44
AP9-10	N 50° 27' W	13.65
AP10-11	N 18° 01' W	6.48
AP11-12	N 28° 28' W	10.45
AP12-13	N 64° 18' W	5.60
METES-AND-BOUNDS IN SECTION 31		
AP21-22	N 33° 20' W	6.93
AP22-23	N 11° 57' W	2.91
AP23-24	N 5° 30' E	6.26
AP24-25	N 8° 50' W	6.77
AP25-26	N 22° 00' W	9.87
METES-AND-BOUNDS IN SECTION 30		
AP1-2	N 27° 48' E	9.96
AP2-3	N 20° 11' E	7.37
AP3-4	N 53° 19' W	14.31
AP4-5	N 18° 53' E	9.84
AP5-6	N 1° 50' W	22.04
AP6-7	N 45° 35' W	9.99
AP7-8	N 18° 14' W	9.08
AP8-9	N 7° 52' W	2.81

UNITED STATES DEPARTMENT OF THE INTERIOR
BUREAU OF LAND MANAGEMENT

Phoenix, Arizona January 31, 2003

This plat is strictly conformable to the approved field notes, and the survey, having been correctly executed in accordance with the requirements of law and the regulations of this Bureau, is hereby accepted.

For the Director

Kenny D. Avrutka

Chief Cadastral Surveyor of Arizona



TOWNSHIP 7 SOUTH, RANGE 18 EAST, OF THE GILA AND SALT RIVER MERIDIAN, ARIZONA

1753-A

DEPENDENT RESURVEY AND METES-AND-BOUNDS SURVEY OF THE ARAVAIPA CANYON WILDERNESS BOUNDARY

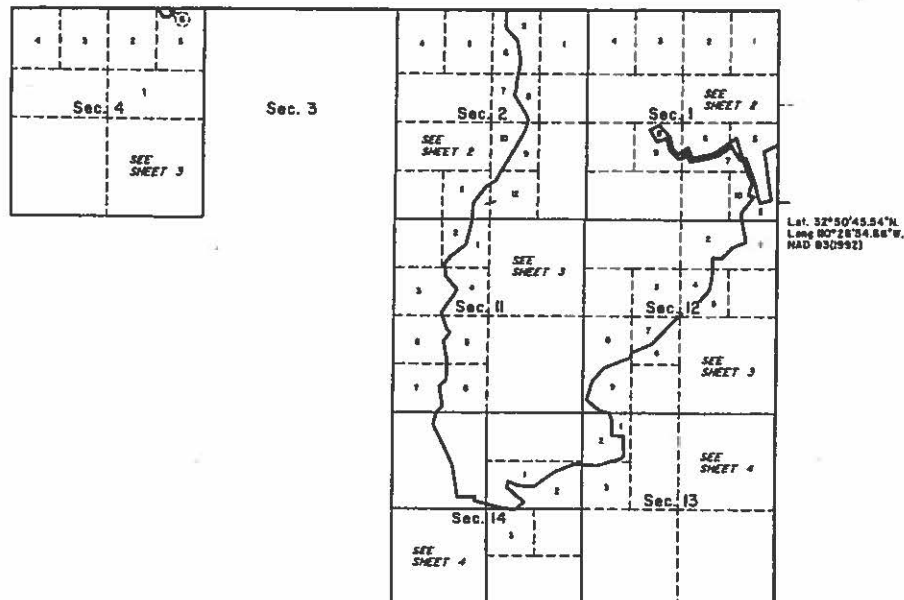
ARAVAIPA CANYON
WILDERNESS AREA

The history of surveys is contained in the field notes.

This plat represents the dependent resurvey of a portion of the east and north boundaries and a portion of the subdivision lines designed to restore the corners in their true original locations according to the best available evidence, the subdivision of section 14 and the metes-and-bounds survey of the Aravaipa Canyon Wilderness Area Boundary, Township 7 South, Range 18 East, Gila and Salt River Meridian, Arizona.

Except as indicated hereon, the lottings and areas are as shown on the plat approved March 20, 1926, accepted June 24, 1926.

This survey was executed by Gordon R. Bubel, Cadastral Surveyor, beginning May 7, 2001, and completed February 26, 2002, pursuant to Special Instructions dated January 17, 2001, for Group No. 860, Arizona.



True Meridian
Magnetic Declination
5 1/2° E.

UNITED STATES DEPARTMENT OF THE INTERIOR
BUREAU OF LAND MANAGEMENT

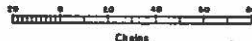
Phoenix, Arizona February 10, 2003

This plat is strictly conformable to the approved field notes, and the survey, having been correctly executed in accordance with the requirements of law and the regulations of this Bureau, is hereby accepted.

For the Director

Gordon R. Bubel

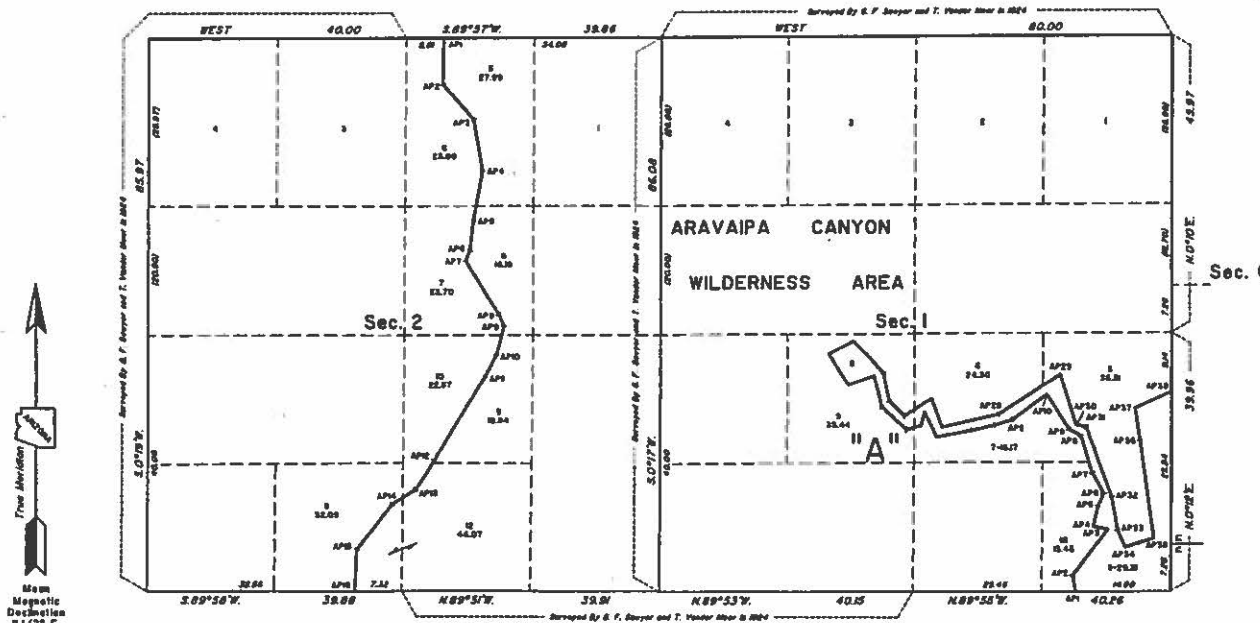
Chief Cadastral Surveyor of Arizona



TOWNSHIP 7 SOUTH, RANGE 18 EAST, OF THE GILA AND SALT RIVER MERIDIAN, ARIZONA 1753-B

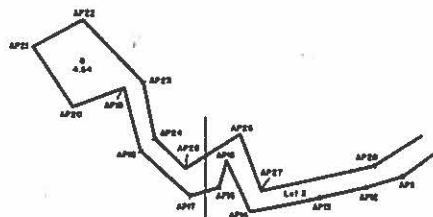
DEPENDENT RESURVEY AND METES-AND-BOUNDS SURVEY OF THE ARAVAIPA CANYON WILDERNESS BOUNDARY

Refer to sheet 1 for survey information.



LINE	BEARING	DISTANCE
METERS-AND-BOUNDS IN SECTION 2		
AP1-2	S. 1°23'W.	7.11
AP2-3	S. 41°15'E.	7.27
AP3-4	S. 9°54'E.	6.14
AP4-5	S. 10°38'W.	7.88
AP5-6	S. 6°36'W.	4.62
AP6-7	S. 21°42'W.	1.78
AP7-8	S. 31°22'E.	9.72
AP8-9	S. 25°24'E.	1.98
AP9-10	S. 14°43'W.	4.87
AP10-11	S. 28°20'W.	3.62
AP11-12	S. 31°10'W.	13.38
AP12-13	S. 32°55'W.	5.25
AP13-14	S. 58°25'W.	4.26
AP14-15	S. 38°29'W.	8.51
AP15-16	S. 2°39'W.	6.42
METERS-AND-BOUNDS IN SECTION 1		
AP1-2	N. 11°51'W.	2.54
AP2-3	N. 38°01'E.	8.90
AP3-4	N. 77°30'W.	2.29
AP4-5	N. 18°35'E.	3.16
AP5-6	N. 25°17'E.	2.20
AP6-7	N. 29°26'W.	3.75
AP7-8	N. 17°38'W.	5.80
AP8-9	N. 59°20'W.	2.24
AP9-10	N. 32°08'W.	6.37
AP10-11	S. 33°53'W.	6.67
AP11-12	S. 72°33'W.	2.95
AP12-13	S. 77°36'W.	3.72
AP13-14	S. 78°25'W.	5.52
AP14-15	N. 25°16'W.	4.34
AP15-16	S. 15°18'W.	2.18
AP16-17	S. 73°32'W.	2.34
AP17-18	N. 47°32'W.	3.24
AP18-19	N. 14°29'W.	5.13
AP19-20	S. 68°35'W.	4.24
AP20-21	N. 33°18'W.	5.62
AP21-22	N. 61°45'E.	4.39
AP22-23	S. 43°44'E.	6.78
AP23-24	S. 11°41'E.	4.48
AP24-25	S. 44°56'E.	3.34
AP25-26	N. 37°25'E.	5.05
AP26-27	S. 20°18'E.	4.80
AP27-28	N. 77°27'E.	9.00
AP28-29	N. 57°07'E.	11.32
AP29-30	S. 17°24'E.	8.29
AP30-31	S. 77°59'E.	1.88
AP31-32	S. 20°37'E.	11.47
AP32-33	S. 8°48'E.	9.16
AP33-34	S. 24°48'E.	2.98
AP34-35	N. 72°46'E.	4.64
AP35-36	N. 8°11'W.	15.23
AP36-37	N. 8°02'W.	5.02
AP37-38	N. 65°42'E.	6.28

True Meridian
Magnetic Declination
8 1/2° E



DETAIL "A"
NO SCALE



UNITED STATES DEPARTMENT OF THE INTERIOR
BUREAU OF LAND MANAGEMENT

Phoenix, Arizona February 10, 2003

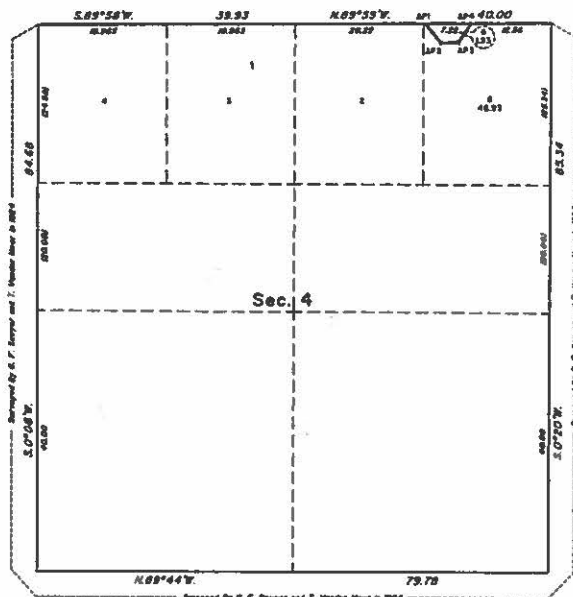
This plot is strictly conformable to the approved field notes, and the survey, having been correctly executed in accordance with the requirements of law and the regulations of this Bureau, is hereby accepted.

For the Director

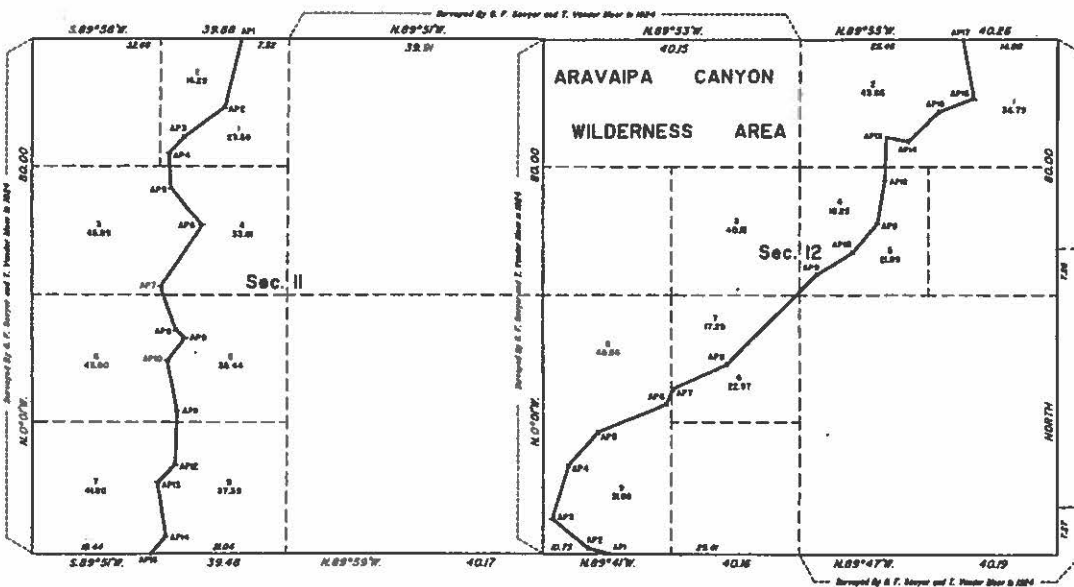
Kenny D. Rawmkan

Chief Cadastral Surveyor of Arizona

TOWNSHIP 7 SOUTH, RANGE 18 EAST, OF THE GILA AND SALT RIVER MERIDIAN, ARIZONA
 1753-C
 DEPENDENT RESURVEY AND METES-AND-BOUNDS SURVEY OF THE ARAVAIPA CANYON WILDERNESS BOUNDARY



Refer to sheet 1 for survey information.



LINE	BEARING	DISTANCE
METES-AND-BOUNDS IN SECTION 4		
AP1-2	S. 38°58' E.	4.03
AP2-3	N. 88°25' E.	2.63
AP3-4	N. 33°43' E.	3.67
METES-AND-BOUNDS IN SECTION 11		
AP1-2	S. 13°42' W.	11.00
AP2-3	S. 53°30' W.	7.82
AP3-4	S. 41°38' W.	3.53
AP4-5	S. 3°14' E.	5.43
AP5-6	S. 40°40' E.	7.32
AP6-7	S. 34°10' W.	11.59
AP7-8	S. 38°00' E.	7.23
AP8-9	S. 48°55' E.	1.98
AP9-10	S. 37°34' W.	4.49
AP10-11	S. 11°04' E.	7.83
AP11-12	S. 1°40' W.	8.32
AP12-13	S. 48°28' W.	3.86
AP13-14	S. 9°11' E.	8.35
AP14-15	S. 41°10' W.	3.56
METES-AND-BOUNDS IN SECTION 12		
AP1-2	N. 76°27' W.	3.78
AP2-3	N. 51°07' W.	7.27
AP3-4	N. 17°45' E.	8.31
AP4-5	N. 48°11' E.	6.88
AP5-6	N. 67°49' E.	11.59
AP6-7	N. 23°18' E.	2.50
AP7-8	N. 65°47' E.	9.38
AP8-9	N. 44°32' E.	19.95
AP9-10	N. 58°37' E.	6.44
AP10-11	N. 40°44' E.	9.90
AP11-12	N. 9°58' E.	6.75
AP12-13	N. 1°17' E.	6.86
AP13-14	S. 77°31' E.	3.50
AP14-15	N. 68°53' E.	6.77
AP15-16	N. 68°44' E.	5.83
AP16-17	N. 10°42' W.	9.34

Sec. 7

UNITED STATES DEPARTMENT OF THE INTERIOR
 BUREAU OF LAND MANAGEMENT

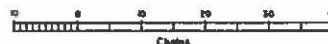
Phoenix, Arizona February 10, 2003

This plat is strictly conformable to the approved field notes, and the survey, having been correctly executed in accordance with the requirements of law and the regulations of this Bureau, is hereby accepted.

For the Director

Kenny D. Rawmikan

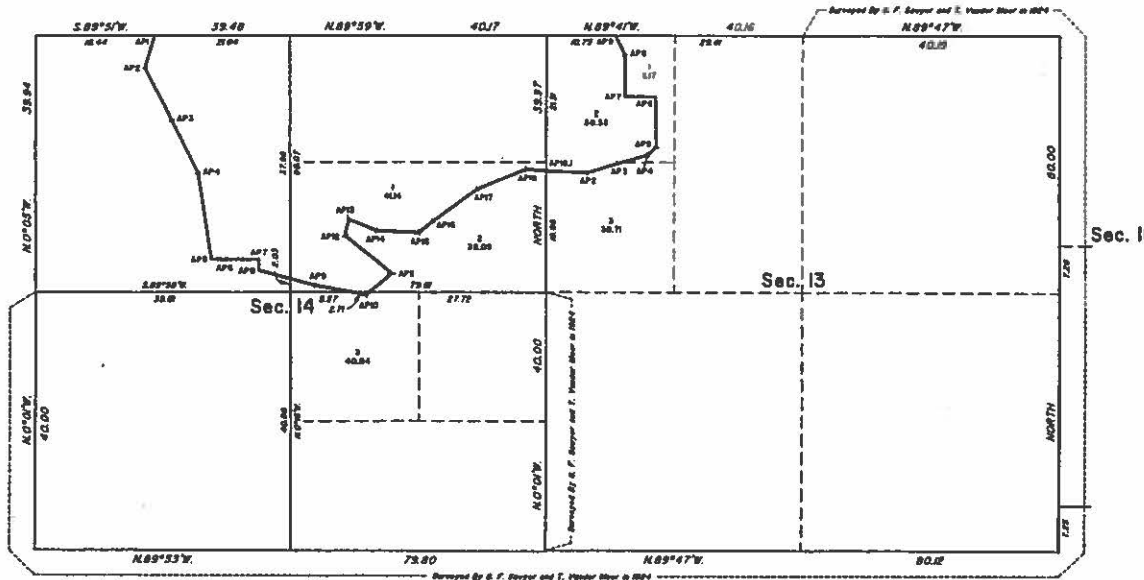
Chief Cadastral Surveyor of Arizona



TOWNSHIP 7 SOUTH, RANGE 18 EAST, OF THE GILA AND SALT RIVER MERIDIAN, ARIZONA
1753-D
DEPENDENT RESURVEY AND METES-AND-BOUNDS SURVEY OF THE ARAVAIPA CANYON WILDERNESS BOUNDARY

ARAVAIPA CANYON
WILDERNESS AREA

Refer to sheet 1 for survey information.



LINE	BEARING	DISTANCE
METERS-AND-BOUNDS IN SECTION 14		
AP1-2	S. 18° 05' W.	5.31
AP2-3	S. 27° 23' E.	9.15
AP3-4	S. 23° 21' E.	9.30
AP4-5	S. 8° 43' E.	13.47
AP5-6	N. 89° 58' E.	2.42
AP6-7	N. 89° 57' E.	4.35
AP7-8	S. 0° 14' E.	1.69
AP8-9	S. 78° 38' E.	9.06
AP9-10	S. 79° 45' E.	8.09
AP10-11	N. 81° 28' E.	5.11
AP11-12	N. 51° 13' W.	9.31
AP12-13	N. 13° 01' E.	2.55
AP13-14	S. 67° 23' E.	4.60
AP14-15	S. 81° 33' E.	6.72
AP15-16	N. 50° 39' E.	2.85
AP16-17	N. 54° 18' E.	6.34
AP17-18	N. 67° 49' E.	8.21
AP18-19	S. 89° 14' E.	3.21
METERS-AND-BOUNDS IN SECTION 13		
AP1-2	S. 86° 50' E.	6.43
AP2-3	N. 72° 46' E.	4.91
AP3-4	N. 74° 37' E.	4.98
AP4-5	N. 48° 43' E.	1.85
AP5-6	N. 1° 06' W.	7.51
AP6-7	N. 89° 07' W.	4.76
AP7-8	N. 0° 45' W.	6.57
AP8-9	N. 26° 46' W.	3.37

UNITED STATES DEPARTMENT OF THE INTERIOR
BUREAU OF LAND MANAGEMENT

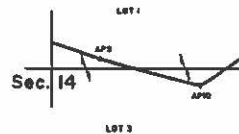
Phoenix, Arizona February 10, 2003

This plat is strictly conformable to the approved field notes, and the survey, having been correctly executed in accordance with the requirements of law and the regulations of this Bureau, is hereby accepted.

For the Director

Kenny D. Rawmker

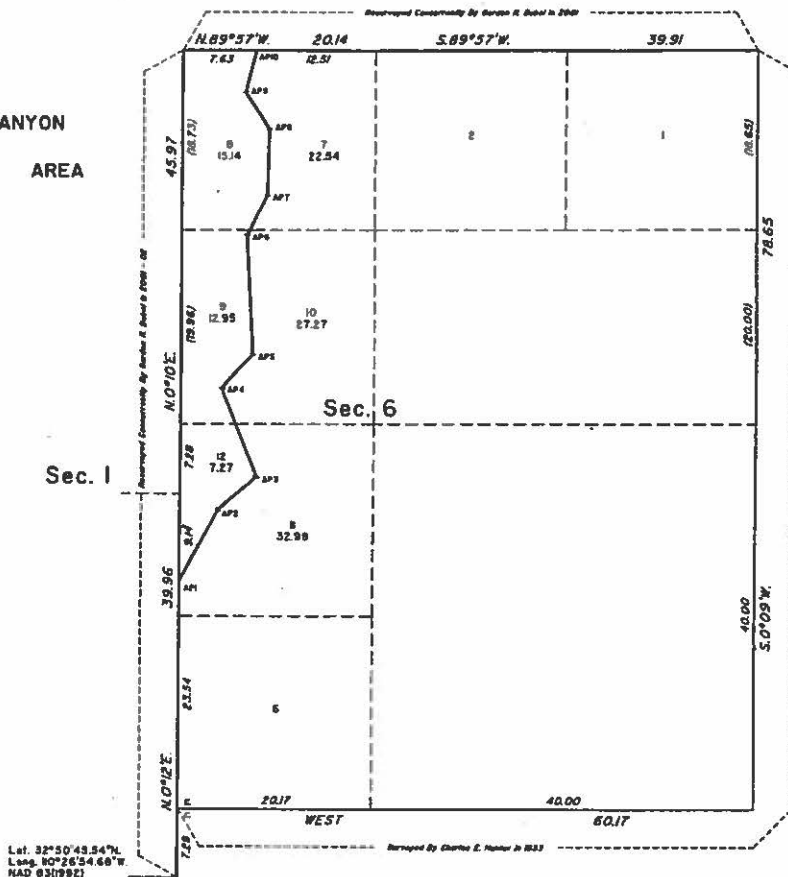
Chief Cadastral Surveyor of Arizona



TOWNSHIP 7 SOUTH, RANGE 19 EAST, OF THE GILA AND SALT RIVER MERIDIAN, ARIZONA

METES-AND-BOUNDS SURVEY OF THE ARAVAIPA CANYON WILDERNESS BOUNDARY IN SECTION 6

ARAVAIPA CANYON
WILDERNESS AREA



Lat. 32°50'43.94"N
Long. 109°26'54.69"W
NAD 83(1982)

The history of surveys is contained in the field notes.

This plat represents the metes-and-bounds survey of the Aravaipa Canyon Wilderness Area Boundary in Township 7 South, Range 19 East, Gila and Salt River Meridian, Arizona.

Except as indicated hereon, the lottings and areas are as shown on the plat approved August 27, 1934, accepted February 23, 1935.

This survey was executed by Gordon R. Babel, Cadastral Surveyor, beginning May 7, 2001, and completed May 8, 2001, pursuant to Special Instructions dated January 17, 2001, for Group No. 060, Arizona.

LINE	BEARING	DISTANCE
METES-AND-BOUNDS IN SECTION 6		
AP1-2	N 28°10'E.	8.48
AP2-3	N 48°37'E.	5.28
AP3-4	N 21°50"W.	9.80
AP4-5	N 42°51'E.	4.77
AP5-6	N 2°55"W.	12.30
AP6-7	N 27°27'E.	4.60
AP7-8	N 1°42'E.	6.83
AP8-9	N 33°00"W.	4.60
AP9-10	N 13°51'E.	4.63

UNITED STATES DEPARTMENT OF THE INTERIOR
BUREAU OF LAND MANAGEMENT

Phoenix, Arizona February 10, 2003

This plat is strictly conformable to the approved field notes, and the survey, having been correctly executed in accordance with the requirements of law and the regulations of this Bureau, is hereby accepted.

For the Director

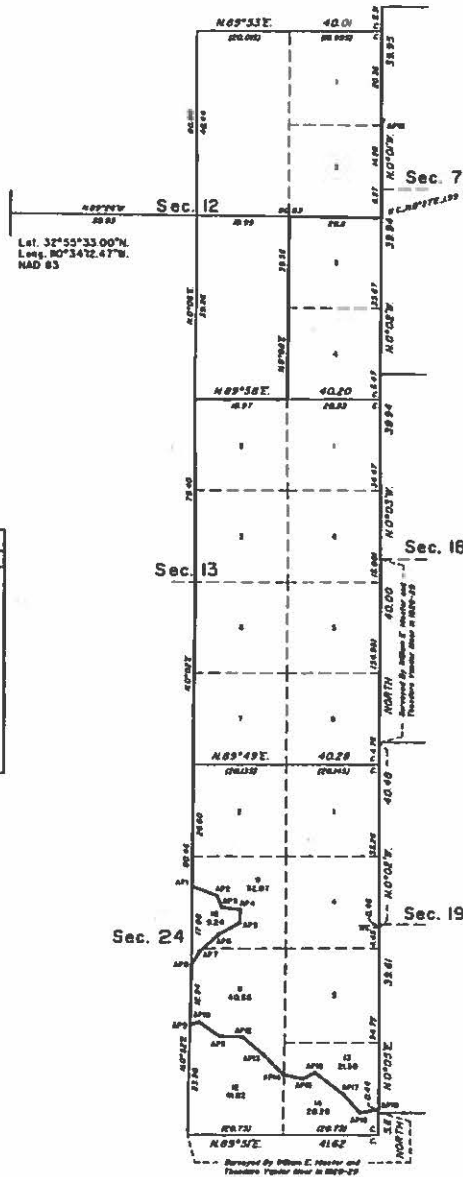
Chief Cadastral Surveyor of Arizona



1704-G

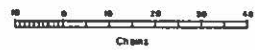
TOWNSHIP 6 SOUTH, RANGE 17 EAST, OF THE GILA AND SALT RIVER MERIDIAN, ARIZONA

DEPENDENT RESURVEY AND METES-AND-BOUNDS SURVEY OF THE ARAVAIPA CANYON WILDERNESS BOUNDARY



Lat. 32°59'33.00"N
Long. 107°34'2.47"W
NAD 83

LINE	BEARING	DISTANCE
METES-AND-BOUNDS IN SECTION 24		
AP1-2	S 68° 29' E	5.73
AP2-3	S 23° 08' W	2.84
AP3-4	S 83° 00' E	3.94
AP4-5	S 1° 17' W	2.94
AP5-6	S 62° 12' W	3.26
AP6-7	S 47° 55' E	5.57
AP7-8	S 32° 59' W	3.31
AP9-10	N 71° 14' E	1.96
AP10-11	S 56° 56' E	6.45
AP11-12	S 00° 36' E	4.90
AP12-13	S 30° 18' E	5.89
AP13-14	S 45° 52' E	6.74
AP14-15	S 77° 17' E	4.45
AP15-16	N 60° 03' E	2.87
AP16-17	S 50° 27' E	7.87
AP17-18	S 41° 48' E	5.40
AP18-19	N 80° 08' E	4.17



The history of surveys is contained in the field notes.

This plat represents the dependent resurvey of a portion of the east boundary and a portion of the subdivisional lines designed to restore the corners in their true original locations according to the best available evidence; the subdivision of sections 12, 13 and 24 and the metes-and-bounds survey of the Aravaipa Canyon Wilderness Area Boundary in Township 6 South, Range 17 East, Gila and Salt River Meridian, Arizona.

Except as indicated hereon, the lottings and areas are as shown on the plat approved December 7, 1929, accepted February 3, 1930.

This survey was executed by Geoffrey A. Graham, Cadastral Surveyor, beginning March 4, 2003, and completed March 22, 2003, pursuant to Special Instructions dated January 17, 2001, for Group No. 860, Arizona.

ARAVAIPA CANYON
WILDERNESS AREA

UNITED STATES DEPARTMENT OF THE INTERIOR
BUREAU OF LAND MANAGEMENT

Phoenix, Arizona April 20, 2005

This plat is strictly conformable to the approved field notes, and the survey, having been correctly executed in accordance with the requirements of law and the regulations of this Bureau, is hereby accepted.

For the Director

Stephen K. Hansen

Acting Chief Cadastral Surveyor of Arizona

A.L.M.

TOWNSHIP 6 SOUTH, RANGE 18 EAST, OF THE GILA AND SALT RIVER MERIDIAN, ARIZONA

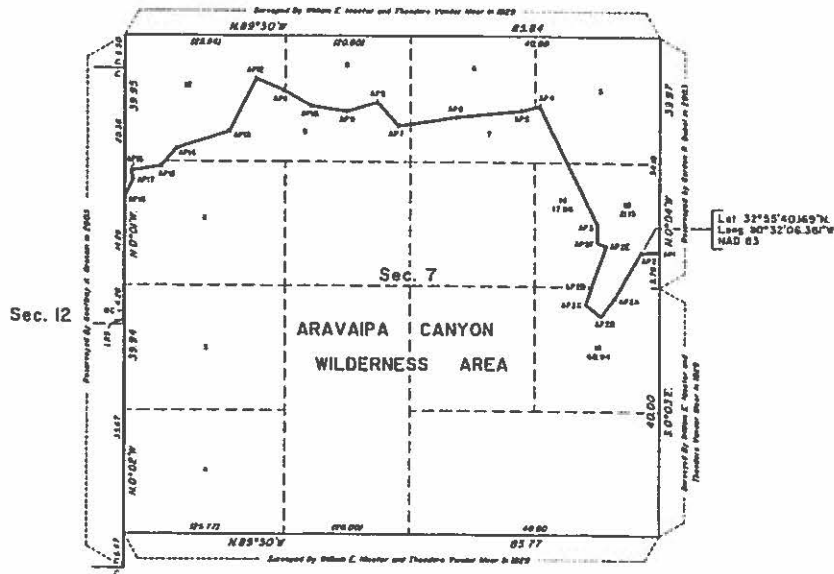
CORRECTIVE RESURVEY OF A METES-AND-BOUNDS SURVEY OF THE ARAVAIPA CANYON WILDERNESS BOUNDARY

The history of surveys is contained in the field notes.

This plat represents the corrective resurvey of a portion of the metes-and-bounds survey of the Aravaipa Canyon Wilderness Area Boundary in section 7, Township 6 South, Range 18 East, Gila and Salt River Meridian, Arizona.

Except as indicated hereon, the lottings and areas are as shown on the plat approved December 7, 1929, accepted February 3, 1930, and the plat accepted July 8, 2005.

This survey was executed by Gordon R. Bubel, Cadastral Surveyor, beginning February 16, 2011, and completed February 16, 2011, pursuant to Special Instructions dated January 17, 2011, and Supplemental Special Instructions dated February 14, 2011, for Group No. 860, Arizona.



LINE	BEARING	DISTANCE
METES-AND-BOUNDS SURVEY OF ARAVAIPA CANYON WILDERNESS BOUNDARY IN SECTION 7		
AP2-2A	S 29° 19' 0"	8.63
AP2A-2B	E 34° 00' 0"	3.72
AP2B-2C	N 51° 21' 0"	3.12
AP2C-2D	N 17° 32' 0"	2.62
AP2D-2E	N 19° 13' 0"	7.51
AP2E-2F	N 65° 16' 0"	1.53
AP2F-3	N 0° 14' 0"	2.80

UNITED STATES DEPARTMENT OF THE INTERIOR
BUREAU OF LAND MANAGEMENT

Phoenix, Arizona March 30, 2011

This plat is strictly conformable to the approved field notes, and the survey, having been correctly executed in accordance with the requirements of law and the regulations of this Bureau, is hereby accepted.

For the Director

Stephen K. Hansen
Chief Cadastral Surveyor of Arizona

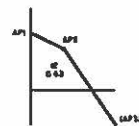
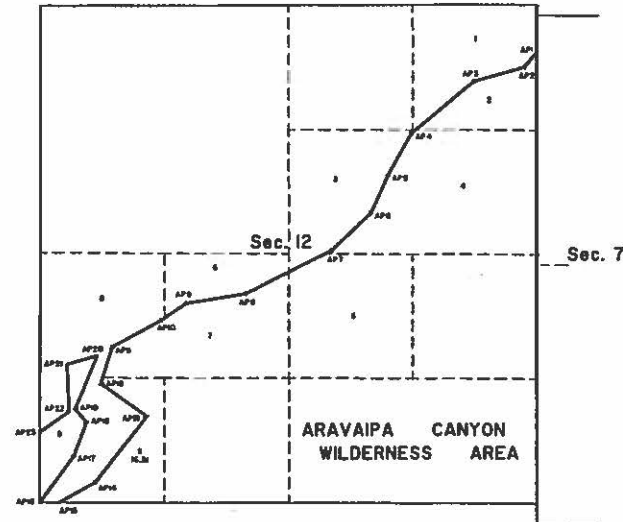
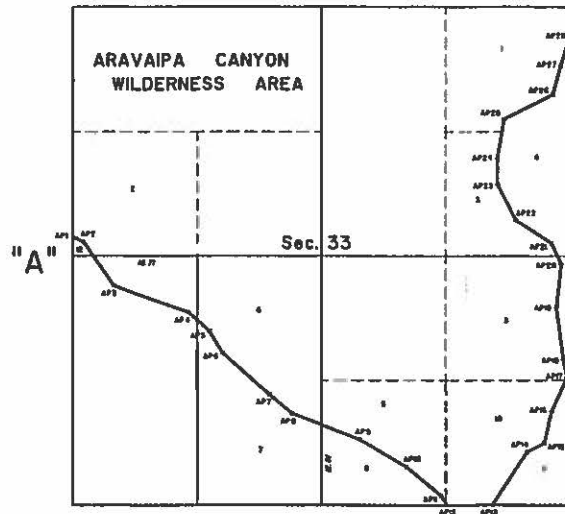


1707-K

TOWNSHIP 6 SOUTH, RANGE 18 EAST, OF THE GILA AND SALT RIVER MERIDIAN, ARIZONA

SUPPLEMENTAL PLAT

This supplemental plat showing amended tottings in sections 12 and 33, Township 6 South, Range 18 East, Gila and Salt River Meridian, Arizona, is based upon the plat accepted July 11, 2005.



DETAIL "A"
NO SCALE

UNITED STATES DEPARTMENT OF THE INTERIOR
BUREAU OF LAND MANAGEMENT

Phoenix, Arizona

April 17, 2007

This plat, showing amended tottings, is based upon the official records and, having been correctly prepared in accordance with the regulations of this Bureau, is hereby accepted.

For the Director

Stephen K. Hansen

Chief Cadastral Surveyor of Arizona



The legal descriptive boundary of the Aravaipa Canyon Wilderness Area is a composite of field notes of the approved surveys executed in the individual townships. For detailed information regarding the history of the survey of the Wilderness Area, refer to the approved field notes of the individual townships.

Township 6 South, Range 17 East	Book 5730
Township 6 South, Range 18 East	Book 5746 and 5936
Township 6 South, Range 19 East	Book 5655
Township 7 South, Range 18 East	Book 5656
Township 7 South, Range 19 East	Book 5657

Acknowledgment of Receipt
Aravaipa Canyon Wilderness
Maps and Legal Description

On behalf of the Senate Energy & Natural Resources Committee, I acknowledge receipt of the congressionally-required map and legal description for the Aravaipa Canyon Wilderness in Arizona, which was designated by the Arizona Wilderness Act of 1984 (Public Law 98-406) and expanded by the Arizona Desert Wilderness Act of 1990 (Public Law 101-628).

Signed: John A. Asimi

Title: Staff Assistant

Print Name: John Asimi

Date: 6/20/2012

Acknowledgment of Receipt
Aravaipa Canyon Wilderness
Maps and Legal Description

On behalf of the House Natural Resources Committee, I acknowledge receipt of the congressionally-required map and legal description for the Aravaipa Canyon Wilderness in Arizona, which was designated by the Arizona Wilderness Act of 1984 (Public Law 98-406) and expanded by the Arizona Desert Wilderness Act of 1990 (Public Law 101-628).

Signed: Bryson Wang

Title: Clerk

Print Name: Bryson Wang

Date: 6/25/2012



United States Department of the Interior



BUREAU OF LAND MANAGEMENT
Arizona State Office
One North Central Avenue, Suite 800
Phoenix, Arizona 85004
www.blm.gov/az/
May 2, 2012

In Reply Refer To:
6300 (9320)

Memorandum

To: Carl Rountree
Director (WO-400), Room 5168

From: Raymond Suazo
State Director

Subject: Aravaipa Canyon Wilderness Congressionally Required Maps and Legal Boundary Description

Attached, please find two file folders each containing the congressionally required maps and legal boundary description for the Aravaipa Canyon Wilderness, designated by the Arizona Desert Wilderness Act of 1990 (Public Law 101-628) and the Arizona Wilderness Act of 1984 (Public Law 98-406), for transmittal to Congressional Committee Chairs.

If you have questions about the maps or legal description, please contact Ken Mahoney, National Landscape Conservation System Coordinator, at 602-417-9238.

Attachments