

Clover Mountains Wilderness

Clover Mountains Wilderness

Lincoln County, Nevada

Ely District Office, Bureau of Land Management

Boundary of Wilderness Area as included in the Lincoln County Conservation, Recreation, and Development Act of 2004, by Public Law No. 108-424, dated November 30, 2004.

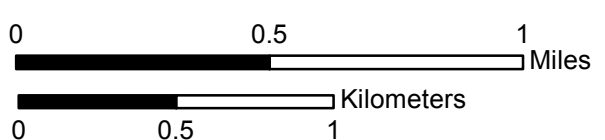
Map completed September 30, 2013

No Warranty is made by the Bureau of Land Management as to the accuracy, reliability, or completeness of these data for individual use or aggregate use with other data.



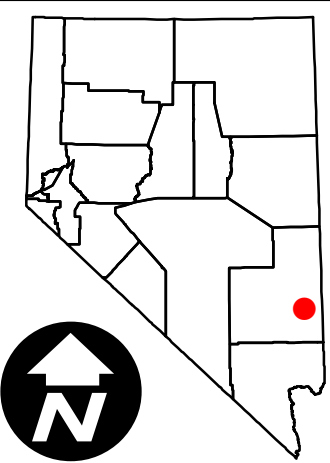
North American Datum 1983
 Universal Transverse Mercator Zone 11 North
 The portions of the wilderness boundary common with the Public Land Survey System were adjusted to the Nevada BLM Geographic Coordinate Data Base.

*The course number indicates the beginning point of the course per the legal description narrative.



- Boundary Change Point*
- Monument with Brass Cap*
- Bureau of Land Management Wilderness Boundary
- Bureau of Land Management Wilderness
- Bureau of Land Management
- Private Ownership

U.S. Geological Survey, 7.5 minute quadrangle maps (Nevada):
 Lyman Crossing Fife Mountain
 Elgin



Sheet 6 of 8 Sheet Index