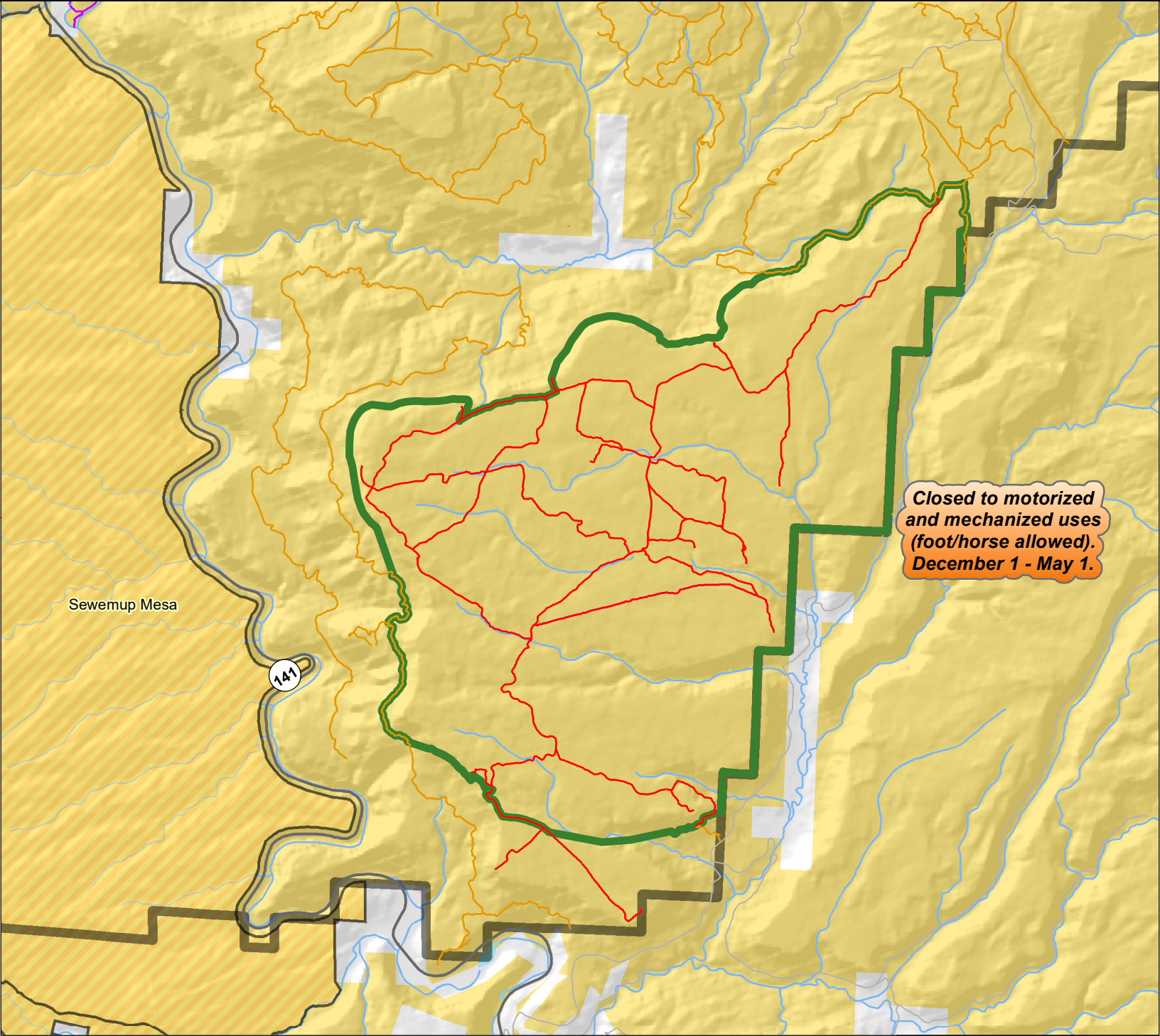




Blue Mesa



Closed to motorized and mechanized uses (foot/horse allowed). December 1 - May 1.

Sewemup Mesa

141

Seasonal Closures

- December 1 - May 1
- Seas. Closed Routes

BLM Routes

- Motorized
- Non-Motorized

- Streams and Rivers
- Lakes

- BLM Wilderness Study Areas
- Bureau of Land Management
- Private



No warranty is made by the Bureau of Land Management as to the accuracy, reliability, or completeness of these data for individual use or aggregate use with other data, or for the purposes not intended by the BLM. Spatial information may not meet National Map Accuracy Standards. This information may be updated without notification.