



**San Rafael Swell Recreation Area Advisory Council  
Field Visit and Meeting Minutes**

**May 24 & 25, 2022**

Emery County Courthouse  
75 East Main Street  
Castle Dale, Utah

## **May 24 – Field Visit**

### **Field Visit Attendees**

- San Rafael Swell Recreation Area Advisory Council (RAAC) members: Sue Bellagamba, Rodney Player, Leslie (Les) Wilberg, Kent Wilson (partial attendance)
- BLM employees: Lance Porter, Angela Hawkins, Kyle Beagley, Jaydon Mead, Myron Jeffs, Dana Truman, Emmy Ellison (notes)
- Members of the public: Janet Bertog, Jennifer, Judi Brawer, Mark Boshell, Jim Jennings

### **Field Visit Sites and Discussion**

- 1) Silent Sentinel – discussion included vandalism issues, potential signage for protection of cultural resources, increasing area visitation, successful current management via multi-agency cooperation.
- 2) Campground Panel – discussion included vandalism issues, potential signage and camera for protection of cultural resources, dedicated law enforcement, increasing area visitation.
- 3) Wedge Overlook and Good Water Rim Trail – discussion included encroachment of dispersed camping, balancing increased visitation with environmental impacts, decreasing camping along the rim, reclamation work, proposed Campground B.
  - Little Grand Canyon Overlook
  - Proposed Campground B area – discussion included access road options, sensitive resource disturbances, trail loop
- 4) Buckhorn Draw – discussion included protection of cultural resources, MK Tunnels.
- 5) Swinging Bridge Campground Complex – discussion included infrastructure, fee implementation, day use and overnight sites, potential cattle fences, interpretive development, funding partnerships.
  - Johanson’s Corral – discussion included boundary between rec area and Sid’s Mountain Wilderness, best utilization of large/diverse area for camping, boating, backpacking.
- 6) The Wickiup – discussion included the high and growing concentration of dispersed camping, potential for fee implementation, potential for reservable sites.
- 7) Justensen Flats – discussion included new trailhead funding and contracts, addition of toilet, will not be fee area and is not in rec area but trails lead to rec area.



## May 25 – Public Meeting\*

\* Held in-person and virtually via Zoom

### Meeting Attendees

- San Rafael Swell Recreation Area Advisory Council (RAAC) members: Sue Bellagamba, Rodney Player, Leslie (Les) Wilberg, Kent Wilson, Elven (Leon) McElprang
- BLM employees: Lance Porter, Angela Hawkins, Kyle Beagley, Jaydon Mead, Myron Jeffs, Dana Truman, Mike Tweddell, Terri McKendrick, Emmy Ellison (minutes)
- Members of the public: Julie Johanson, Judi Brawer (virtual)

### Welcome and Introductions

#### Advisory Council Overview of Field Visit

- Benefits included physically seeing campgrounds and understanding logic behind location selections, meeting folks in person.

#### Wild Horse and Burro Management in SRSRA

- Presentation by Mike Tweddell
- Wild Free-Roaming Horses and Burros Act of 1971 designated management to BLM and Forest Service based on animal location and directed Appropriate Management Level (AML) determinations.
- BLM has 11 offices in Utah managing 22.9 million acres (42% of the state), 19 Herd Management Areas (HMA) and 10 Herd Areas (herd area does not have a formal management plan).
- Price Field Office (PFO) includes 2.5 million acres of surface estate and 2.7 million acres of federal mineral resources. 4 wild horse and burro herds are managed over 578,000 public acres. The 4 herds within PFO are Range Creek, Robber's Roost, Sinbad and Muddy Creek; only the Sinbad and Muddy Creek herds fall within the Dingell Act and the San Rafael Recreation Area.
- Muddy Creek HMA has an AML of 75-125 head, known population currently 206, diverse color and vegetation ranges, elevation range 5,000 to 6,000 feet within 203,767 acres. Introductions done for genetic purposes.
- Sinbad Burros AML is 50-75 head, known population after gather is about 200, color range is grey and black, vegetation ranges from salt desert shrub to pinyon juniper, elevation range is 5,000 to 6,500 feet. May 2022 gather removed 153 head, many evaded capture by hiding successfully in the landscape, will reevaluate situation yet this year.
- Discussion of the public webpage (<https://www.blm.gov/whb>) for information related the Wild Horse and Burro Program such as herd management areas, adoptions/sales and contacts as well as links to information about specific gathers including daily gather reports, male/female ratios, shipped to what facilities, etc. Public is always welcome to attend gathers in person.
- Discussion of recent Sinbad gather in May. Target ratio of jacks to jennies is 50/50, this gather was 60/40. Recovered 4 collars. In 2016, BLM released 103 head of branded burro and only captured 41 of



them on this gather. When population is higher, they spread out farther. Fencing repair issues with permittees. AMLs were determined when the Act was originally passed and data is reanalyzed over time.

- Discussion of grazing Animal Unit Month (AUM) fees and the frustrations of livestock grazers including sharing water with wild horses and burros. Gathering wild animals when watering livestock is not a viable option as it would violate national gather contracts. Water trapping options.
- Concern from board about low numbers captured during the Sinbad gather due to the concealed and scattered nature of herd and the slow BLM response time in following up to gather more. BLM explained gather contracts and the importance of animals grouping up prior to gathering.
- Discussion of the 20 collars put on jennies in 2016, fertility control measures and monitoring.

### **Special Recreation Permits**

- Presentation by Myron Jeffs
- Special Recreation Permit (SRP) and Recreation Use Permit (RUP) definitions from the handbook. SRPs allow for commercial, competitive and group rec uses of public land and related water.
- Most (about 95%) SRPs fall under the Commercial category where recreation use is for financial gain. Outfitters are monitored. Other categories are Competitive (races, etc.), Vending (none issued in last 14 years), Special Use (float Desolation Canyon) and Organized Group (large weddings). Large is defined as over 100 people by the State but that number can vary by field office. Smaller events are preferred to minimize impact and promote positive experiences. Without permitting, scheduling issues can be problematic at desirable locations.
- SRP Administration process includes consultation, application submission, NEPA analysis, approval/denial, activity monitoring, post-use report and fees, performance evaluation. Fees are established by Director and updated regularly. Expectations are clear during the application process.
- SRPs can be issued for multiple years. Example: 1<sup>st</sup> time big game outfitter can be issued a 1-year permit and after acceptable performance monitoring for the season, a 10-year permit can be considered without doing NEPA every year. Cost recovery can add up quickly to 50 hours if you count every year.
- SRPs can also be issued for multiple offices. Example: canyoneering guide must be hiking through a canyon that covers multiple jurisdictions on the hike to qualify.
- COVID pandemic has made trend analysis difficult. Some outfitters do multiple activities which can also affect data analysis. Price Field Office issued 89 SRPs in FY2021, 62 in San Rafael Swell Rec Area, 27 others included Desolation Canyon, Nine Mile Canyon and/or Wilderness only outfitters. 57 of the 62 were multi-year, 9 were new SRPs, 13 were local (Emery or Carbon County).
- Primary SRP activities are big game hunting, OHV tours, hiking/backpacking, canyoneering and educational classes/trips. Secondary activities are mountain biking, wilderness therapy, horseback riding, OHV events and river running. These activities make up 7-8% of all rec activities in the area. User days are small percentage of overall activity; time-consuming program to administer and SRP fees are very important to the overall rec program. Handbook directs that 100% of the rec fee revenue stays



in local office, an annual spending report is available to the public and a minimum of 85% must be used in direct benefit of rec program/facilities. SRPs generated over \$100,000 in FY2021.

- SRPs fee revenue used in rec area during FY2021 includes:
  - Buckhorn Draw Campground – vault toilets, picnic tables, fire rings, improved parking and signage, campsites better delineated and route proliferation reclaimed.
  - Shade structures at Fossil Point, Swinging Bridge, South Temple Wash.
  - New fee tubes at Buckhorn Draw, Temple Mountain Townsite, South Temple Wash, Grimes Wash.
  - New fence at Buckhorn Draw, Temple Mountain Townsite, South Temple Wash.
  - Site identification signs at multiple locations.
  - Kiosk repair and replacement.
- Management approach is discretionary and driven by things like user experience, sensitivity of resources and visitation levels. Labor intensive and time-consuming program internally. 2 of the last approximately 1,000 SRPs have been denied. Film permits (movie/commercial) are administered out of realty, not recreation.

### **Advisory Council Discussion of Field Visit**

- Discussion of campground developments at Wedge Overlook. Need to stop expansion of dispersed camping and improve day use experience at Good Water Rim and Wedge Overlook area, impacts on big horn sheep and endangered cactus. 3 proposed campground locations are main one by Wedge Overlook (Campground A), one on the east end (Campground C) and the one in the middle (Campground B). Road closure/use options at Campground B including maintaining the loop, possible one-way, high-clearance vehicles only. Close camping at Wedge Overlook, general opposition to camping on south side of road. Possible fencing options: post and cable like NK Tunnel, large rocks, combination of both.

### **Public Comments**

- SUWA – pleased with the tour and is concerned with the volume of recreational developments/proposals without seeing an overarching plan. Would like to see BLM develop management plan for that area, look at science regarding increasing use and its impacts on wildlife. Move from project-to-project view towards larger plan. Would like to see BLM focus on other resources such as wildlife, cultural, etc. in addition to recreation as stated in the Dingell Act.
- Public – asked if an increase in birds has been identified since the cabin was moved at Swinging Bridge. Difficult question to answer without biologist present.
- Council moved to close the public comment period, the motion was seconded. Public comment period closed.

### **Advisory Council Discussion and Recommendations**



- Issues with livestock corrals at Johanson's Corral being used by the public for horses, solutions include signage/kiosk, tie rails, adding public corral.
- Council motioned that in the Byron Johanson Cabin Area, a kiosk be installed explaining multi-use needs to all user groups, tie rails be installed on the south end for horses allowing cattlemen to get in and out particularly from February to May, specific parking areas be defined for vehicles using wilderness area, designate area for parking cars to the west. Motion was seconded All in favor, none opposed.
- Council motioned for trial period on road to Campground B for so-called primitive road signage one way going west from the Wedge back to the Wedge road indicating high clearance, mileage and no trailers. Continued discussion requested. Motion was seconded All in favor, none opposed.
- Discussion about protecting cultural resources. Signage is priority, post and rail/barricades at appropriate locations, cameras, education is important. Fences are being knocked over, rock art being defaced. Interest in protecting cultural resources over creating camp sites. Interagency funding options.
- Council motioned to prioritize protection of cultural resources over individual campsites. Motion was seconded. All in favor, none opposed.

#### **Public Comment (additional)**

- SUWA – appreciated the discussion and motion about cultural resources. Would like to see decisions about cultural resources being made with tribal member on RAAC. Should be actively recruiting to fill that tribal position.

#### **Advisory Council Discussion and Recommendations (cont.)**

- BLM had tribal member application which went to headquarters with other nominations where all were considered. There is another nomination for a tribal member and once the Federal Register posts, those nominations will be disseminated. Tribal member required to be an elected leader of a federally recognized tribe.
- Discussion of the importance of a management plan and the slow nature of the process of creating one. Emery County appreciates tackling issues at high-use areas, reactionary steps to protect what we have while developing the management plan. Discussion of the comprehensive management plan and its time frame and stages. Value of plan development alongside emergency protection measures.
- Council motioned for council recommendation that BLM continue with implementation planning such as Wedge and Wikiup infrastructure to manage emergency nature of increasing use. Motion was seconded. All in favor, none opposed.
- Discussion of implementation planning steps, law enforcement will not have teeth to enforce until NEPA is complete, best response to signage will be public good will.
- BLM will bring Wedge drawings to next meeting on August 29<sup>th</sup>, already advertised in Federal Register. Discussion of term expirations for 2 members, will need 5 members to hold a meeting. Options are to self-nominate and to nominate others for vacancies, then sent to State Director who works with the



U.S. Department of the Interior  
Bureau of Land Management

Governor then recommendations are sent to the Secretary of Interior. BLM will notify RAAC once the Federal Register notice is posted.

## Agenda

- Possible agenda items for next meeting include visitation for spring and summer within the recreation area, accomplishments with rec staff and seasonals, plan amendment process. Would like step-by-step pics of Justensen Flat development. Request for report on Dingell Act non-motorized use within the rec area to analyze the last year and discuss next year's plans. Update on Wild Horse and Burro follow-up date for gathering more.

Council moved to adjourn the meeting. Motion was seconded. Meeting adjourned at 12:34 pm.

Approved by: Les Wilberg



## Agenda, Federal Register Notice, Presentation Slides

### May 25 –Public Meeting

Time	Topic	Presenter
8:30 a.m.	Welcome and introductions	Les Wilberg, Advisory Council Chair Lance Porter, Green River District Manager
8:45 a.m.	Agenda review and meeting logistics  Purpose: Review agenda recommendations from February 2022 meeting, review current agenda and adjust, if necessary	Les Wilberg, Advisory Council Chair
9:00 a.m.	Wild horse and burro management within the San Rafael Swell Recreation Area  Purpose: Share BLM goals and management of the wild horse and burro herd management area.	BLM- Mike Tweddell
9:45 a.m.	Break	
10:30 a.m.	Special Recreation Permits (SRP)  Purpose: Provide an update about the SRP program	BLM- Myron Jeffs
11:00 a.m.	Public Comment Period	
11:30 a.m.	Advisory Council review, discuss and consider recommendations  Purpose: Advisory Council to formalize recommendations to the BLM	Advisory Council
12:30 p.m.	Adjourn	



certain lands to Calista Corporation, an Alaska Native regional corporation, pursuant to the Alaska Native Claims Settlement Act of 1971 (ANCSA). The lands approved for conveyance lie entirely within Clarence Rhode National Wildlife Range now known as the Yukon Delta Wildlife Refuge. As provided by ANCSA, ownership of the subsurface estate in the same lands will be retained by the United States.

**DATES:** Any party claiming a property interest in the lands affected by the decision may appeal the decision in accordance with the requirements of 43 CFR part 4 within the time limits set out in the **SUPPLEMENTARY INFORMATION** section.

**ADDRESSES:** You may obtain a copy of the decision from the Bureau of Land Management, Alaska State Office, 222 West Seventh Avenue, #13, Anchorage, AK 99513-7504.

**FOR FURTHER INFORMATION CONTACT:** Abby Muth, Land Law Examiner, BLM Alaska State Office, 907-271-3345 or [amuth@blm.gov](mailto:amuth@blm.gov). Individuals in the United States who are deaf, deafblind, hard of hearing, or have a speech disability may dial 711 (TTY, TDD, or TeleBraille) to access telecommunications relay services. Individuals outside the United States should use the relay services offered within their country to make international calls to the point-of-contact in the United States. The relay service is available 24 hours a day, 7 days a week, to leave a message or question with the BLM. The BLM will reply during normal business hours.

**SUPPLEMENTARY INFORMATION:** As required by 43 CFR 2650.7(d), notice is hereby given that the BLM will issue an appealable decision to Calista Corporation. The decision approves conveyance of surface estate in certain lands pursuant to ANCSA (43 U.S.C. 1601, *et seq.*), as amended. Ownership of the subsurface estate will be retained by the United States.

The lands are located within the Yukon Delta National Wildlife Refuge, in the following townships, and aggregate 78.31 acres: T. 15 N., R. 86 W., Seward Meridian (SM); T. 10 N., R. 88 W., SM; T. 15 N., R. 88 W., SM; T. 17 N., R. 88 W., SM; T. 18 N., R. 88 W., SM; T. 10 N., R. 89 W., SM; and T. 12 N., R. 89 W., SM.

The decision addresses public access easements, if any, to be reserved to the United States pursuant to Sec. 17(b) of ANCSA (43 U.S.C. 1616(b)), in the lands approved for conveyance.

The BLM will also publish notice of the decision once a week for four

consecutive weeks in "The Delta Discovery" newspaper.

Any party claiming a property interest in the lands affected by the decision may appeal the decision in accordance with the requirements of 43 CFR part 4 within the following time limits:

1. Unknown parties, parties unable to be located after reasonable efforts have been expended to locate, parties who fail or refuse to sign their return receipt, and parties who receive a copy of the decision by regular mail which is not certified, return receipt requested, shall have until June 3, 2022 to file an appeal.

2. Parties receiving service of the decision by certified mail shall have 30 days from the date of receipt to file an appeal.

Parties who do not file an appeal in accordance with the requirements of 43 CFR part 4 shall be deemed to have waived their rights. Notices of appeal transmitted by facsimile will not be accepted as timely filed.

**Abby Muth,**  
Land Law Examiner, Adjudication Section.  
[FR Doc. 2022-09524 Filed 5-3-22; 8:45 am]  
**BILLING CODE 4310-JA-P**

**DEPARTMENT OF THE INTERIOR**

**Bureau of Land Management**  
**[223 LLUTG02000 L12200000.PM00000]**

**Notice of Public Meetings, San Rafael Swell Recreation Area Advisory Council, Utah**

**AGENCY:** Bureau of Land Management, Interior  
**ACTION:** Notice of public meetings.

**SUMMARY:** In accordance with the Federal Land Policy and Management Act, the Federal Advisory Committee Act, and the Federal Lands Recreation Enhancement Act, the U.S. Department of the Interior, Bureau of Land Management's (BLM) San Rafael Swell Recreation Area Advisory Council (Council) will meet as indicated below.

**DATES:** The Council will meet at the Emery County Courthouse on May 24, 2022, to depart for a field tour of the San Rafael Swell Recreation Area from 8:30 a.m. to 5:00 p.m. The Council will hold an in-person public meeting with a virtual participation option on May 25, 2022, from 8:30 a.m. to 12:30 p.m., with public comments accepted at 11:00 a.m.

The Council will hold an in-person public meeting with a virtual participation option on August 29, 2022, from 8:30 a.m. to 12:45 p.m., with public comments accepted at 11:00 a.m.

The meetings and field tour are open to the public.

**ADDRESSES:**

- On May 24, participants will meet at the Emery County Courthouse, 75 East Main Street, Castle Dale, UT 84513 for a field tour to the San Rafael Swell Recreation Area. The May 25 meeting will also be held at the Emery County Courthouse. Individuals that prefer to participate virtually must register in advance at <https://tinyurl.com/bdcs6npr>.

- The August 29 meeting will be held at the Emery County Courthouse. Individuals that prefer to participate virtually must register in advance at <https://tinyurl.com/yckrjtfa>.

Written comments may be sent prior to each meeting either by mail to the BLM Green River District, Attn: Lance Porter, 170 South 500 West, Vernal, UT 84078, or by email: [utprmail@blm.gov](mailto:utprmail@blm.gov), with the subject line "San Rafael Swell Recreation Area Advisory Council Meeting."

**FOR FURTHER INFORMATION CONTACT:** BLM Green River District Manager Lance Porter, telephone: (435) 781-4400 or email: [utprmail@blm.gov](mailto:utprmail@blm.gov). Persons in the United States who are deaf, deafblind, hard of hearing, or have a speech disability may dial 711 (TTY, TDD, or TeleBraille) to access telecommunications relay services. Individuals outside the United States should use the relay services offered within their country to make international calls to the point-of-contact in the United States.

**SUPPLEMENTARY INFORMATION:** The John D. Dingell, Jr. Conservation, Management, and Recreation Act (Pub. L. 116-9) established the San Rafael Swell Recreation Area Advisory Council to advise the Secretary of the Interior, through the BLM, in planning and managing the San Rafael Swell Recreation Area. The seven-member Council represents a wide range of interests including local government, recreational users, grazing allotment permittees, conservation organizations, people with expertise in historical uses of the recreation area, and Tribes.

The Council will host a field tour on May 24 to the San Rafael Swell Recreation Area, which features badlands of brightly colored and wildly eroded sandstone formations, deep canyons, and giant plates of stone tilted upright through massive geologic upheaval. The recreation area offers numerous recreational opportunities including hiking, biking, four-wheel driving, horseback, canyoneering, and river running. Members of the public are welcome on the field tour but must provide their own transportation and meals. Individuals who plan to attend



must RSVP at least one week in advance of the field tour to the contact listed in the **FOR FURTHER INFORMATION CONTACT** section of this notice. Individuals who need special assistance, such as sign language interpretation and other reasonable accommodations, also should contact the person listed in the **FOR FURTHER INFORMATION CONTACT** section of this notice. The field tour will follow current Centers for Disease Control and Prevention COVID-19 guidance regarding social distancing and wearing of masks. Agenda items for the May 25 meeting include wild horse and burro management and special recreation permits. Agenda items for the August 29 meeting include a review of Areas of Critical Environmental Concern, land use plan amendments updates, and spring/summer visitor information updates.

Detailed meeting minutes will be maintained in the BLM Green River District Office and will be made available for public inspection and reproduction during regular business hours within 90 days following each meeting. Minutes will also be posted to the Council's web page <https://go.usa.gov/xzk5Q>. The amount of time for individual oral comments may be limited, depending on the total number of commenters. Written comments may also be sent to the BLM Green River District Manager at the address listed in the **ADDRESSES** section of this notice. All comments received will be provided to the Council.

*Public Disclosure of Comments:* Before including your address, phone number, email address, or other personal identifying information in your comment, you should be aware that your entire comment, including your personal identifying information, may be made publicly available at any time. While you can ask in your comment to withhold your personal identifying information from public review, we cannot guarantee that we will be able to do so.

*Authority:* 43 CFR 1784.4-2.

**Anita Bilbao,**

*Associate State Director.*

[FR Doc. 2022-09522 Filed 5-3-22; 8:45 am]

**BILLING CODE 4310-DQ-P**

## DEPARTMENT OF THE INTERIOR

### Bureau of Land Management

[223.LLID910000.L18200000.XZ0000.241A0 MO #4500161655]

#### Notice of Public Meetings of the Idaho Resource Advisory Council and the Proposed Lava Ridge Wind Energy Project Subcommittee

**AGENCY:** Bureau of Land Management, Interior.

**ACTION:** Notice of public meetings.

**SUMMARY:** In accordance with the Federal Land Policy and Management Act of 1976 and the Federal Advisory Committee Act of 1972, the U.S. Department of the Interior Bureau of Land Management's (BLM) Idaho Resource Advisory Council (Idaho RAC) and the Proposed Lava Ridge Wind Energy Project Subcommittee (Lava Ridge Subcommittee) will meet as indicated below.

**DATES:** The BLM Idaho RAC and Lava Ridge Subcommittee will meet as follows:

- The Idaho RAC and Lava Ridge Subcommittee will host a field tour on Wednesday, June 15, 2022 from 8:00 a.m. to 5:30 p.m. Mountain Daylight Time.
- The Lava Ridge Subcommittee will host virtual meetings on Thursday, July 7, 2022; Thursday, August 25, 2022; and Thursday, September 22, 2022 from 9:00 a.m. to 5:00 p.m. Mountain Daylight Time.
- The Idaho RAC will host an in-person meeting on Wednesday, October 19, 2022 from 9:00 a.m. to 5:00 p.m. Mountain Daylight Time at the BLM Twin Falls District Office, 2878 Addison Avenue East, Twin Falls, Idaho, 83301. A virtual participation option will also be available. The entire meeting may be held virtually depending on public health recommendations in place at the time of the meeting. Public notice of the change will be posted on the RAC's web page 15 days in advance of the meeting.

The field tour and all meetings are open to the public and public comment periods will be held at each meeting and at the field tour.

**ADDRESSES:** The June 15 field tour will commence at 8:00 a.m. at the BLM Twin Falls District Office, 2878 Addison Avenue East, Twin Falls, Idaho, 83301. Participants will then travel to the Minidoka National Historic Site, Wilson Butte Cave, and Sid Butte. All virtual meetings will be held via the Zoom platform. Agendas, Zoom registration, and participation information will be available on the RAC's web page 30 days in advance of the meetings at

<https://www.blm.gov/get-involved/resource-advisory-council/near-you/idaho>.

**FOR FURTHER INFORMATION CONTACT:** MJ Byrne, 1387 South Vinnell Way, Boise, Idaho 83709; (208) 373-4006; [mbyrne@blm.gov](mailto:mbyrne@blm.gov). Individuals in the United States who are deaf, deafblind, hard of hearing, or have a speech disability may dial 711 (TTY, TDD, or TeleBraille) to access telecommunications relay services. Individuals outside the United States should use the relay services offered within their country to make international calls to the point-of-contact in the United States.

**SUPPLEMENTARY INFORMATION:** The Idaho RAC is chartered, and the 15 members are appointed by the Secretary of the Interior. Their diverse perspectives are represented in commodity, non-commodity, and local interests. The Idaho RAC serves in an advisory capacity to BLM officials concerning issues relating to land use planning and management of public land resources located within the State of Idaho. The Idaho RAC formed the Lava Ridge Subcommittee to compile information, conduct research, and report their recommendations to the full Council for consideration. The BLM Shoshone Field Office is currently developing an Environmental Impact Statement to analyze the proposed Lava Ridge Wind Energy Project, a commercial-scale wind energy facility that is proposed to be constructed on BLM-managed public land in southern Idaho.

The June 15 Subcommittee and RAC field tour is to sites associated with the proposed Project. The public comment period for the Wednesday, June 15, 2022, field tour will be held at 4:45 p.m.

The July 7 Subcommittee meeting will focus on providing background information on the proposed Project, the NEPA process, and stakeholder perspective. The August 25 Subcommittee meeting will include a review of the Draft Environmental Impact Statement (DEIS) and presentations on alternatives. The September 22 Subcommittee meeting will focus on compiling information for consideration of the RAC on the DEIS alternatives. The October 19 RAC meeting will include State Director and District Office updates; a presentation on the Payette River System Draft Business Plan; an update on the proposed Project, a presentation on Subcommittee findings relating to the proposed Project, and development of associated RAC recommendations; and a presentation on Bipartisan Infrastructure Law implementation and projects.





U.S. Department of the Interior  
Bureau of Land Management

# Wild Horse and Burro







# Mike Tweddell

- Assistant Field Manager
- Range Management Specialist
- Wild Horse and Burro Technical Specialist





U.S. Department of the Interior  
Bureau of Land Management

# Wild Free Roaming Horses and Burros Act.

- The Wild Free-Roaming Horses and Burros Act of 1971 (Public Law 92-195)
  - Declared that wild free-roaming horses and burros are living symbols of the historic and pioneer spirit of the west.
  - Protected from capture, branding, harassment, or death...considered an integral part of the natural system of public lands.



TM

Wild  
Horse  
and  
Burro  
Program

U.S. Department of the Interior  
Bureau of Land Management



# Management

- The WFRHBA designated management to the Bureau of Land Management and Forest Service.
- The agencies were directed to determine the Appropriate Management Level in areas that held WHB at the time the act was passed.







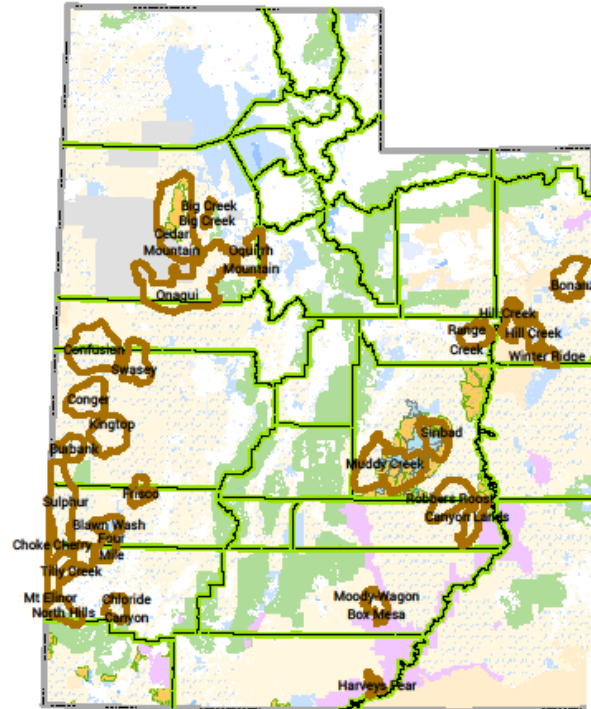
# Wild Horse and Burro within Utah

Price Field Office  
125 S. 600 W.  
Price, Utah 84501  
435-636-3600

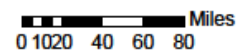


5/18/2022

This document is based on the best available information and is not intended to be a final determination of the accuracy, reliability, or completeness of these data for individual users. It is intended for general informational purposes only. The information is provided as a service and does not constitute a warranty. The user assumes all responsibility for any use of this information. The user acknowledges that the information is provided as a service and does not constitute a warranty. The user assumes all responsibility for any use of this information.



- Legend**
- Wild Horse & Burro Herd Areas
  - BLM UT - San Rafael Swell Recreation Area (Polygon)
  - AGRC - Utah State Boundary (Polygon)
- BLM Utah Legend**
- Bureau of Land Management (BLM)
  - Bureau of Reclamation
  - Indian Reservation (IR)
  - Military Reservations and Corps of Engineers
  - National Park Service (NPS)
  - Private
  - State
  - State Parks and Recreation
  - State Wildlife Reserve/Management Area
  - US Forest Service (USFS)
  - Congressionally Designated Wilderness







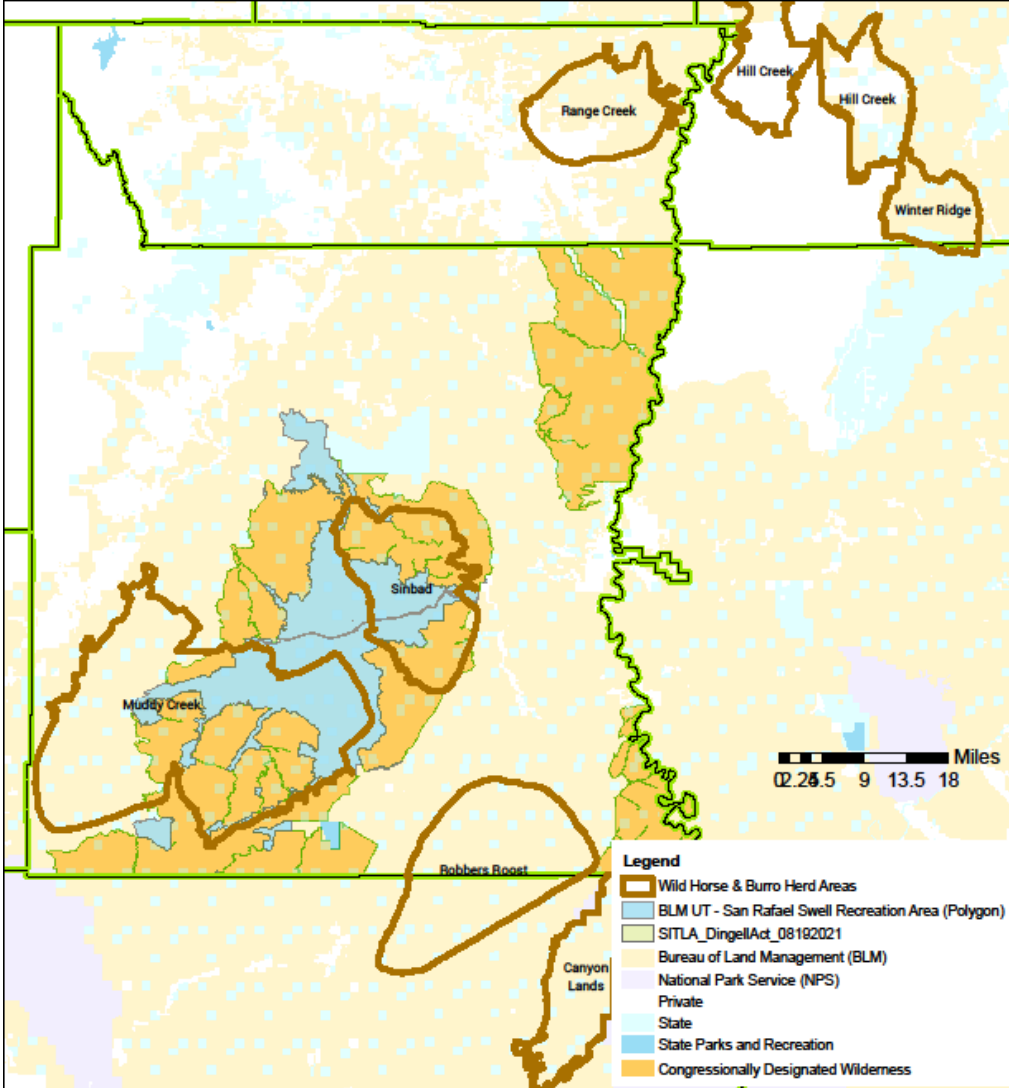
# Wild Horse and Burro within the Price Field Office

Price Field Office  
125 S. 600 W.  
Price Utah 84501  
435-836-3600



5/18/2022

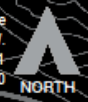
This document is based on the best available information and is not a warranty, express or implied, of the accuracy, completeness, or timeliness of these data for individual users. It is intended for general informational purposes only. The information may be outdated, misapplied, or otherwise used in a manner not intended by the BLM. The BLM is not responsible for any errors or omissions in this document. The BLM is not responsible for any damages, including consequential damages, resulting from the use of this document.





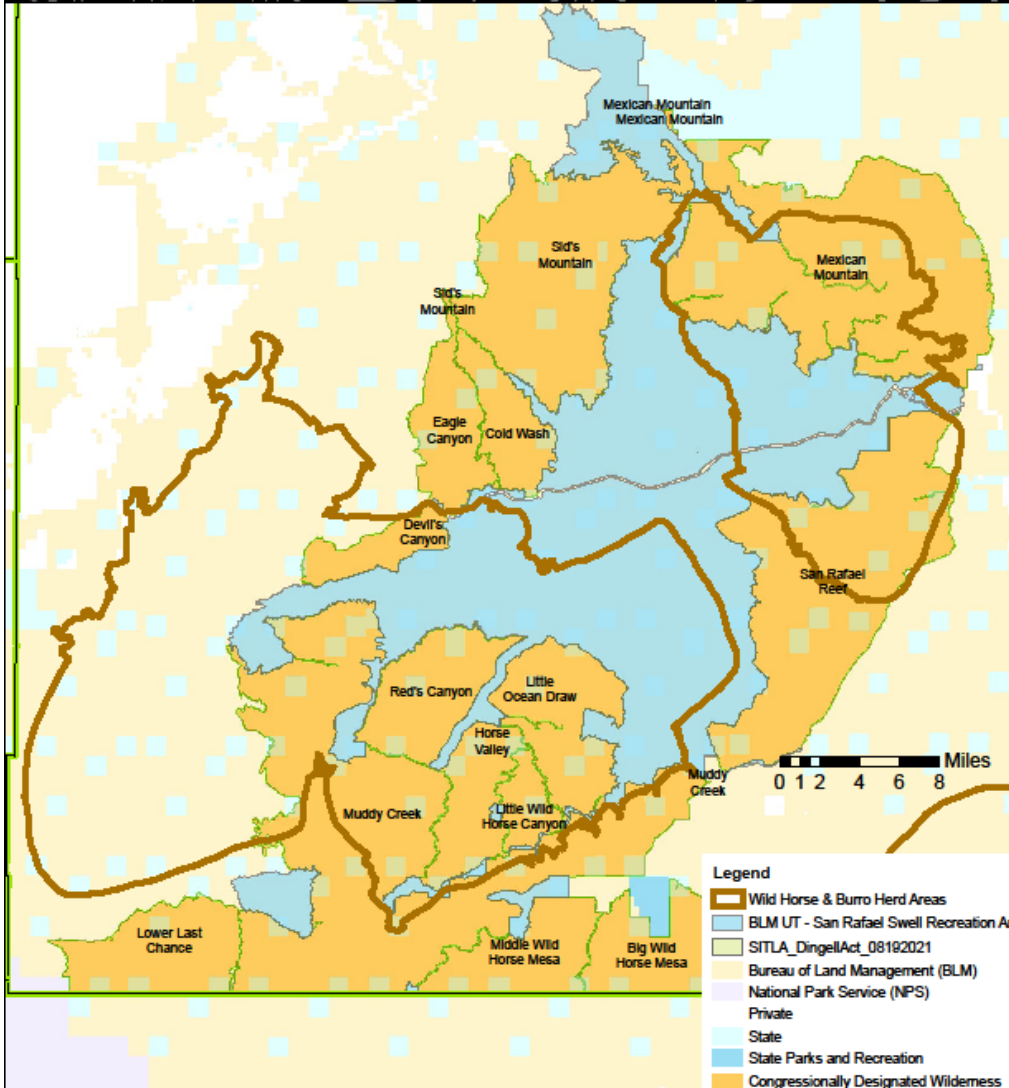
# Wild Horse and Burro within the San Rafael Swell

Price Field Office  
125 S. 600 W.  
Price, Utah 84501  
435-836-3600



5/17/2022

No warranty is made by the Bureau of Land Management as to the accuracy, reliability, or completeness of these data for technical or professional use without regard. Critical data is omitted. This information may be used for general informational purposes only. This data was last updated on 5/17/2022.





## Muddy Creek HMA

- AML of 75-125
- Current population estimate of 206
- Diverse Color range
- Vegetation type of Shadscale, bunchgrass and Pinyon Juniper
- Elevation range from 5,000 ft. to 6,000 ft.
- 203,767 acres





## Introduced Group

- Genetic purposes
- Photo taken in 2006
- Gruella mare 2<sup>nd</sup> from right was gathered in 2018, is now in a sanctuary in Oklahoma.

Photo taken just North of Tan Seeps in the Recreation Area





# Sinbad Burros

- AML of 50-75
- Current Population estimate of 200
- Colors are grey and Black







- Vegetation from salt desert shrub, to Pinyon Juniper
- Elevation from 5,000 ft to 6,500 ft
- Gathered first week of May 2022 removed 153 head.





Home > Programs > Wild Horse and Burro

- PLANNING AND NEPA
- ENERGY AND MINERALS
- NATIONAL CONSERVATION LANDS
- RECREATION AND VISITOR SERVICES
- WILD HORSE AND BURRO
- ABOUT THE PROGRAM
- WILD HORSE AND BURRO BLOG
- HERD MANAGEMENT
- ADOPTIONS AND SALES
- GET INVOLVED
- PARTNERSHIPS
- CONTACTS
- LANDS, REALTY AND CADASTRAL SURVEY
- LAW ENFORCEMENT
- FIRE
- PUBLIC SAFETY
- CULTURAL HERITAGE
- PALEONTOLOGY
- NATURAL RESOURCES
- WILDLIFE CONSERVATION
- AQUATIC RESOURCES



## WILD HORSE AND BURRO PROGRAM



The Bureau of Land Management manages and protects wild horses and burros on 26.9 million acres of public lands across 10 Western states as part of its mission to administer public lands for a variety of uses. The Wild Horse and Burro Program's goal is to manage healthy wild horses and burros on healthy public rangelands.



### ONGOING GATHERS

[BLACK MOUNTAIN WILD BURRO GATHER \(ARIZONA\) »](#)

### POPULAR LINKS

[UPDATES ON CANON CITY FACILITY »](#)





**2022 SINBAD HERD MANAGEMENT  
AREA WILD BURRO GATHER**

**2022 SULPHUR HMA WILD HORSE  
GATHER**

**2021 CONGER WILD HORSE GATHER**

**2021 ONAQUI MOUNTAIN WILD  
HORSES GATHER**



## 2022 Sinbad Herd Management Area Wild Burro Gather

The Bureau of Land Management Green River District concluded the Sinbad Herd Management Area (HMA) wild burro gather on May 5, 2022.

### Details of Gather

The Bureau of Land Management (BLM) plans to gather approximately 300 wild burros from BLM-administered and other lands within and near the Sinbad Herd Management Area (HMA) using the helicopter drive-trapping method. Population growth suppression GonaCon may be implemented to approximately 20 jennies to help stabilize the annual

### News

Apr 27, 2022

[BLM to begin Sinbad Herd Management Area wild burro gather](#)

### Gather Status

As of May 5, 2022

**Animals Gathered:** 153  
153 Wild Burros (75 jacks,





## Daily Gather Reports

### Daily Gather Reports

The Bureau of Land Management's Price Field Office concluded the wild burro gather on May 5, 2022.

#### Thursday, May 5

**Animals Gathered:** 7

7 Wild Burros (7 Jacks, 0 Jennies, and 0 Foals)

**Animals Shipped:** 7

7 Wild Burros (7 Jacks, 0 Jennies, and 0 Foals)

**Animals Released:**

0 Wild Burros (0 Jacks, 0 Jennies, and 0 Foals)

**Deaths:** 0

-Sudden / Acute: 0

-Pre-existing / Chronic: 0

#### Wednesday, May 4

**Animals Gathered:** 17

17 Wild Burros (10 Jacks, 5 Jennies, and 2 Foals)

**Animals Shipped:** 16

16 Wild Burros (9 Jacks, 5 Jennies, and 2 Foals)

**Animals Released:**

0 Wild Burros (0 Jacks, 0 Jennies, and 0 Foals)

**Deaths:** 1

-Sudden / Acute: 1

-Pre-existing / Chronic: 0

7 year-old male sustained a spinal cord injury after falling into a 5-foot drainage ditch he was trying to jump during gather operations

#### Tuesday, May 3

**Animals Gathered:** 6

6 Wild Burros (2 Jacks, 4 Jennies, and 0 Foals)

**Animals Shipped:** 66

6 Wild Burros (2 Jacks, 4 Jennies, and 0 Foals)



U.S. Department of the Interior  
Bureau of Land Management

# Special Recreation Permits (SRPs)

In the San Rafael Swell Recreation Area

1. Purpose of SRPs
2. SRP Authorities and Policy
3. SRP Administration
4. SRPs in the Recreation Area  
Numbers, activities, trends, etc...
5. SRP Management Approach

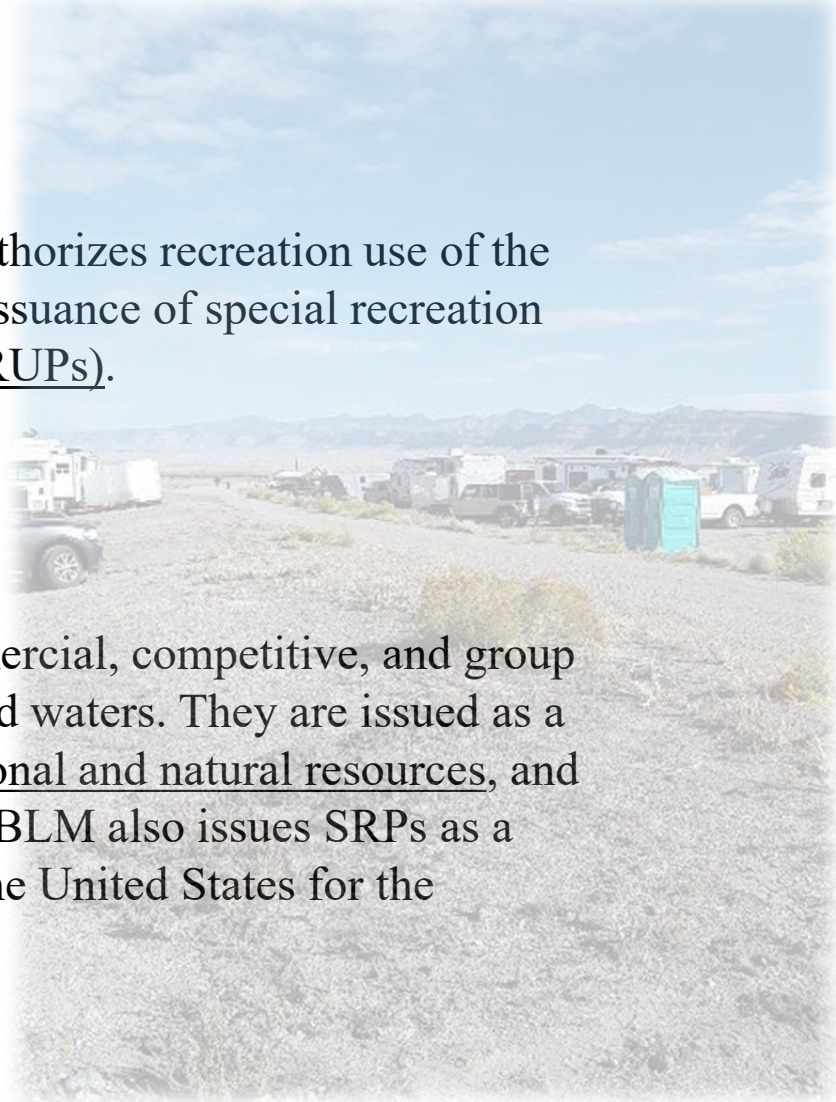




# Purpose of SRPs

The Bureau of Land Management (BLM) authorizes recreation use of the public lands and related waters through the issuance of special recreation permits (SRPs) and recreation use permits (RUPs).

SRPs are authorizations that allow for commercial, competitive, and group recreation uses of the public lands and related waters. They are issued as a means to control visitor use, protect recreational and natural resources, and provide for the health and safety of visitors. BLM also issues SRPs as a mechanism to provide fair market value to the United States for the recreational use of public lands.





# SRP Authorities and Policy

## **AUTHORITIES:**

### **Federal Land Policy and Management Act (FLPMA) 1976**

*Contains the Bureau of Land Management's (BLM's) general land use management authority over the public lands, and establishes outdoor recreation as one of the principal uses of those lands (43 U.S.C. 1701(a)(8)). Section 302(b) of FLPMA directs the Secretary of the Interior to regulate through permits or other instruments the use of the public lands, which includes commercial recreation use.*

### **43 Code of Federal Regulations (CFR) 2930**

**§ 2931.2 What kinds of permits does BLM issue for recreation-related uses of public lands?**

*The regulations in this part establish permit and fee systems for:*

**(a) Special Recreation Permits for commercial use, organized group activities or events, competitive use, and for use of special areas;**







# SRP Authorities and Policy

## **AUTHORITIES:**

### **Federal Land Policy and Management Act (FLPMA) 1976**

**PERMIT**

*Contains the Bureau of Land Management's (BLM's) general land use management authority over the public lands, and establishes outdoor recreation as one of the principal uses of those lands (43 U.S.C. 1701(a)(8)). Section 302(b) of FLPMA directs the Secretary of the Interior to regulate through permits or other instruments the use of the public lands, which includes commercial recreation use.*

### **43 Code of Federal Regulations (CFR) 2930**

**PERMIT**

*§ 2931.2 What kinds of permits does BLM issue for recreation-related uses of public lands?*

*The regulations in this part establish permit and fee systems for:*

*(a) Special Recreation Permits for commercial use, organized group activities or events, competitive use, and for use of special areas;*

### **Federal Lands Recreation Enhancement Act (FLREA) 2004**

**FEES**

*§6802. Recreation fee authority*

*(a) Authority of Secretary*

*Beginning in fiscal year 2005 and thereafter, the Secretary may establish, modify, charge, and collect recreation fees at Federal recreational lands and waters as provided for in this section.*

*(h) Special recreation permit fee*

*The Secretary may issue a special recreation permit and charge a special recreation permit fee in connection with the issuance of the permit, for specialized recreation uses of Federal recreational lands and waters, such as group activities, recreation events, motorized recreational vehicle use.*

## **POLICY:**

### **BLM Handbook 2930-1 Recreation Permit and Fee Administration**

*This handbook provides policy and guidance for administering key elements of the BLM Recreation Fee Program*



# SRP Administration

An SRP is necessary and required if the proposed activity meets the requirements for one of these **5 types of SRPs**.

- Commercial: Recreational use of public lands and related waters for financial gain.



Wilderness Therapy, Outfitters and Guides,  
ATV events, Universities and Educational  
Institutions



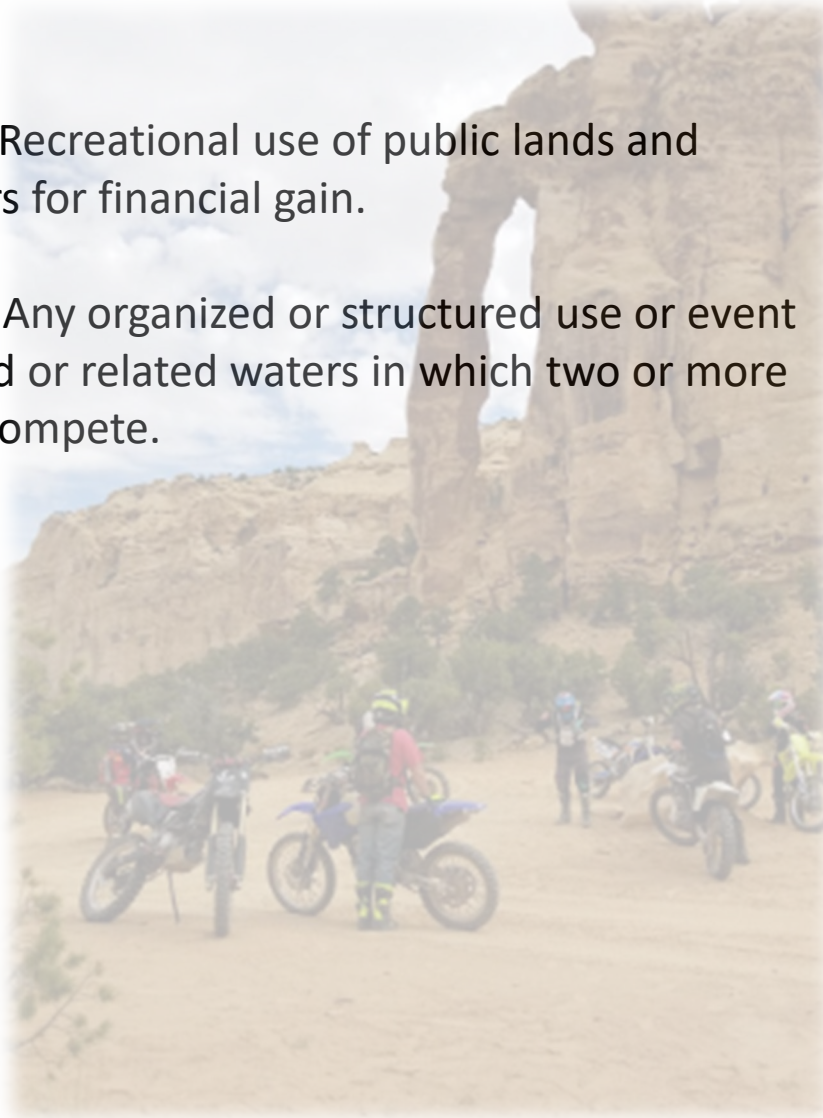
# SRP Administration

An SRP is necessary and required if the proposed activity meets the requirements for one of these **5 types of SRPs**.

- Commercial: Recreational use of public lands and related waters for financial gain.
- Competitive: Any organized or structured use or event on public land or related waters in which two or more contestants compete.

Wilderness Therapy, Outfitters and Guides, ATV events, Universities and Educational Institutions

Motorcycle Race







# SRP Administration

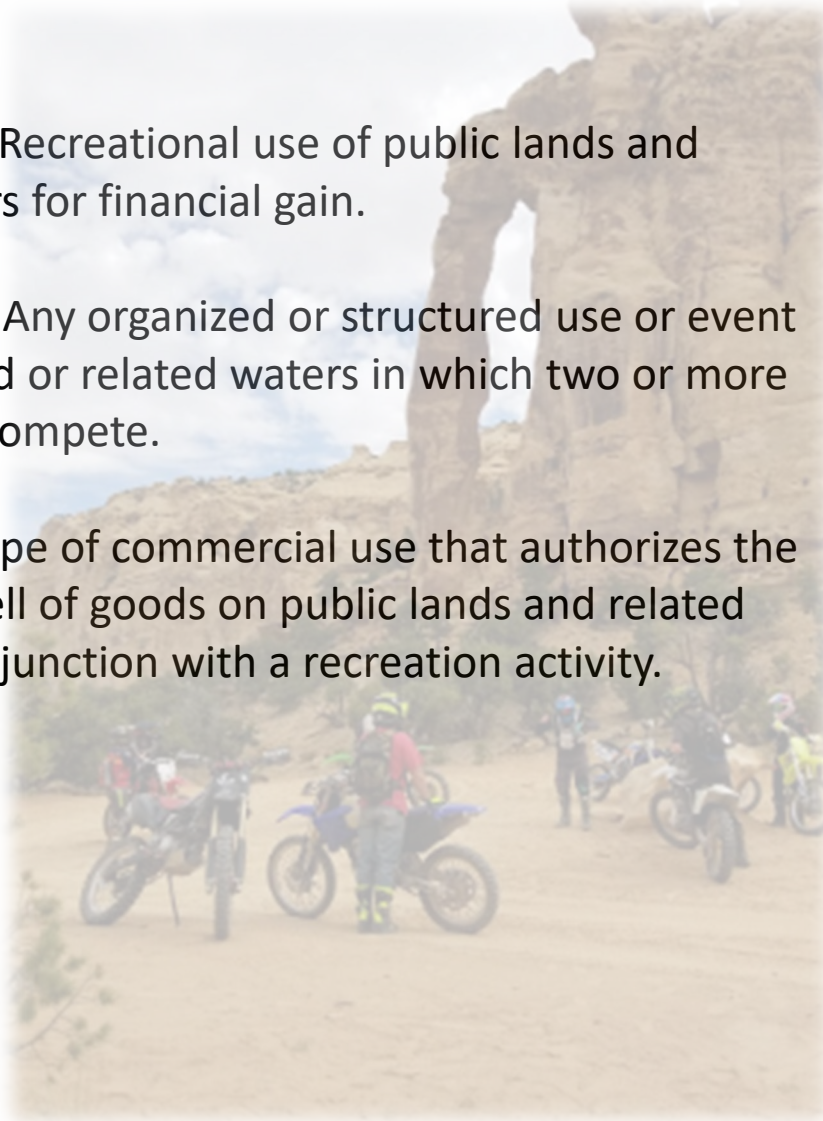
An SRP is necessary and required if the proposed activity meets the requirements for one of these **5 types of SRPs**.

- Commercial: Recreational use of public lands and related waters for financial gain.
- Competitive: Any organized or structured use or event on public land or related waters in which two or more contestants compete.
- Vending: A type of commercial use that authorizes the short-term sell of goods on public lands and related waters in conjunction with a recreation activity.

Wilderness Therapy, Outfitters and Guides, ATV events, Universities and Educational Institutions

Motorcycle Race

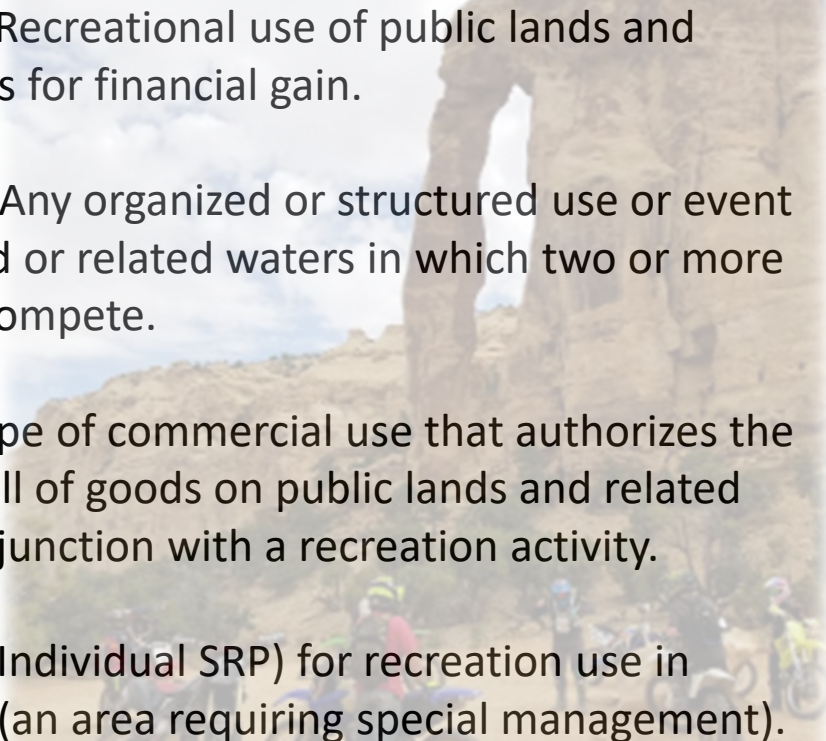
Ice cream truck at the Wedge





# SRP Administration

An SRP is necessary and required if the proposed activity meets the requirements for one of these **5 types of SRPs**.

- 
- A background image showing a desert landscape with a prominent rock archway. In the foreground, several motorcycles are parked on a dirt path, with people standing nearby. The scene is set in a dry, rocky environment under a clear sky.
- Commercial: Recreational use of public lands and related waters for financial gain.
    - Wilderness Therapy, Outfitters and Guides, ATV events, Universities and Educational Institutions
  - Competitive: Any organized or structured use or event on public land or related waters in which two or more contestants compete.
    - Motorcycle Race
  - Vending: A type of commercial use that authorizes the short-term sell of goods on public lands and related waters in conjunction with a recreation activity.
    - Ice cream truck at the Wedge
  - Special Use: (Individual SRP) for recreation use in special areas (an area requiring special management).
    - Desolation Canyon river permits



# SRP Administration

An SRP is necessary and required if the proposed activity meets the requirements for one of these **5 types of SRPs**.

- Commercial: Recreational use of public lands and related waters for financial gain.  
Wilderness Therapy, Outfitters and Guides, ATV events, Universities and Educational Institutions
- Competitive: Any organized or structured use or event on public land or related waters in which two or more contestants compete.  
Motorcycle Race
- Vending: A type of commercial use that authorizes the short-term sell of goods on public lands and related waters in conjunction with a recreation activity.  
Ice cream truck at the Wedge
- Special Use: (Individual SRP) for recreation use in special areas (an area requiring special management).  
Desolation Canyon river permits
- Organized Group: Permits intended for group activities that are neither commercial nor competitive that require management.  
Scouting camps, large family reunions, weddings





# SRP Administration

## In a nutshell:

- 1) Preapplication consultation
- 2) Applicant submits an application package
  - a) SRP application
  - b) Proposed operating plan
  - c) Map
  - d) Insurance certificate
  - e) Pre-season fee
- 3) BLM conducts NEPA Analysis
- 4) BLM approves or denies SRP application
- 5) BLM monitors activity
- 6) Applicant submits post-use report and pays post-use fees
- 7) BLM conducts performance evaluation





# SRP Administration

## In a nutshell:

- 1) Preapplication consultation
- 2) Applicant submits an application package
  - a) SRP application
  - b) Proposed operating plan
  - c) Map
  - d) Insurance certificate
  - e) Pre-season fee
- 3) BLM conducts NEPA Analysis
- 4) BLM approves or denies SRP application
- 5) BLM monitors activity
- 6) Applicant submits post-use report and pays post-use fees
- 7) BLM conducts performance evaluation



## Other Notes:

All SRP fees are established by the BLM Director and automatically updated every three years.

Cost recovery after 50 hours

BLM can issue multi-year SRPs

BLM can issue multi-office SRPs

Commercial, institutional: Greater of \$115/year or \$6/person/day
Commercial: Greater of \$115/year or 3% of gross revenue
Competitive: Greater of \$115/year or \$6/participant/day
Organized Group: Greater of \$115/year or \$6/person/day
Both commercial and competitive: Greatest of \$115/year or \$6/participant/day or 3% of gross revenue
Other





# SRPs in the Recreation Area

Price BLM issued 89 total SRPs in FY 2021  
*Mostly Commercial*

**62** were authorized to operate in the  
San Rafael Swell Recreation Area

The other 27 include commercial activity in Desolation  
Canyon, Nine Mile Canyon, and/or  
outfitters who operate specifically and only in Wilderness





# SRPs in the Recreation Area

## 2021

- 57 of those 62 are multi-year SRPs
- 9 of those 62 were new SRPs (either new first year applicants or renewal for multi-year after the initial first year)
- 13 of those 62 have a local business address (Emery or Carbon County)

Fiscal Year	Number of New SRP Applications – Price Field Office
2019	25
2020	17
2021	9
2022	20 to date

## Trend:

- Trends have been thrown off by COVID and other factors, making predictions based on numbers unreliable
- Not seeing dramatic fluctuation in SRP applications and issuance
- Total #s slightly down since FY2018 when we issued 99 (compared to 89 in FY2021)



# SRPs in the Recreation Area

<b>Primary SRP Activity</b>	<b>Other SRP Activity</b>
Big Game Hunting Guides and Outfitters	Mountain Bike Tours
OHV Tours	Wilderness Therapy
Hiking/Backpacking	Horseback Rides
Canyoneering	OHV Events
Educational Institution Courses and Field Trips	River Running

## Recreation Visitor Days in Recreation Area FY2021

<b>SRP Activity</b>	15,392
<b>General Public</b>	197,501

SRP Activity makes up 7-8% of all recreation activity in the Recreation Area





# SRPs in the Recreation Area

Although the user days are only a small percentage of overall activity:

- It's a time-consuming program to administer (coordination, NEPA, monitor, etc...)
- SRP **fees** are very important to the overall recreation program



# SRPs in the Recreation Area

Although the user days are only a small percentage of overall activity:

- It's a time-consuming program to administer (coordination, NEPA, monitor, etc...)
- SRP fees are very important to the overall recreation program

**SRP Fees in FY 2021** \*specific to Recreation Area:

**+/- \$104,928**

100% of the recreation fee revenue stays in the local office

**As directed by Handbook 2930-1  
Recreation Permit and Fee Administration**

A minimum of 85% must be used in direct benefit of the recreation program or facilities

An annual spending report is available to the public



# SRPs in the Recreation Area

## Buckhorn Draw Campground



*New Restroom and Kiosk in Buckhorn Draw*

During FY 2021 several major improvements were made in Buckhorn Draw. Campsites were better delineated, route proliferation was reclaimed, two new vault toilets were installed, new fee tubes were installed, 40 new picnic tables were placed, 33 new fire rings were installed, and parking areas and signage were improved. Recreation fee revenue made this project possible and covered approximately \$22,200 in staff labor and equipment costs, and \$16,400 in materials expenses.



## Other Accomplishments

- 9 new shade structures were installed at Fossil Point, Swinging Bridge, and South Temple Wash.
- 7 new fee tubes were installed at Buckhorn Draw, Temple Mountain Townsite, South Temple Wash, and Grimes Wash.
- 5,000 feet of new fence was installed to prevent encroaching surface disturbance and better delineate campsites at Buckhorn Draw, Temple Mountain Townsite, and South Temple Wash.
- 7 new campground site identification signs were installed, with the new look and feel illustrations.
- 10 kiosks were replaced or repaired and re-stained. These kiosks contain camping information, camping regulations, and interpretive information.





# SRP Management Approach

- SRP issuance is a discretionary action
- Recognition of the relationship between managing SRP activity in the Recreation Area and the adjacent Wilderness areas
  - Impacts?
  - Facilitating or limiting?

## Challenges:

- Providing good customer service
  - Considering the time it takes to process
- The Pros and Cons of a more formalized SRP program
  - Improve internal efficiency
  - Not entirely responsive to customers needs
  - Field Office SRP deadlines
  - Improved system of communication and expectations, perhaps a more formalized process with FO wide deadlines, etc...



# Conclusion

SRP activity only comprises 7-8% of the overall activity in the Recreation Area

SRP Administration is labor intensive and time consuming



SRPs generated over \$100k within the Recreation Area in FY 2021; Part of a larger SRP program Field Office Wide (\$488,394.83 in FY 2021)

SRPs are an important component of the Recreation Area, as the process facilitates 62 companies/businesses in conducting activities on public lands within the Recreation Area