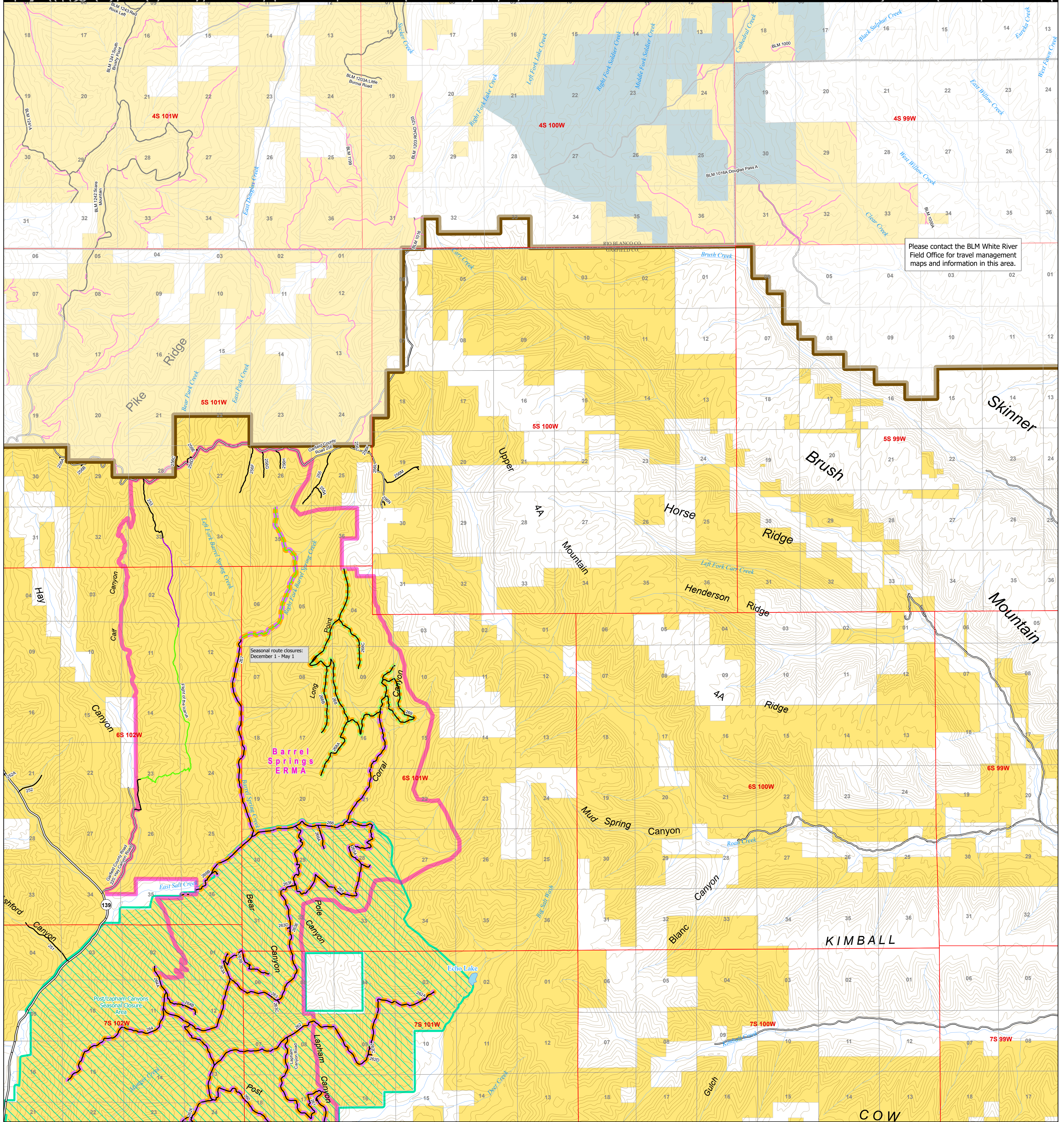




**U.S. DEPARTMENT OF THE INTERIOR
BUREAU OF LAND MANAGEMENT
Grand Junction Field Office**

COLORADO

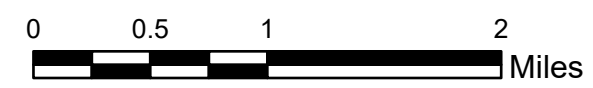
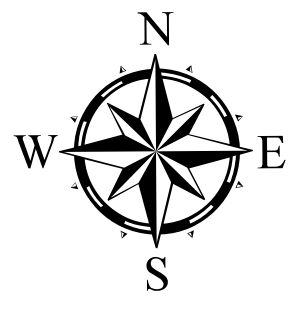
Travel Management Map 2 : Brush Mountain



Please contact the BLM White River Field Office for travel management maps and information in this area.

Seasonal route closures:
December 1 - May 1

Barrel Springs
ERMA

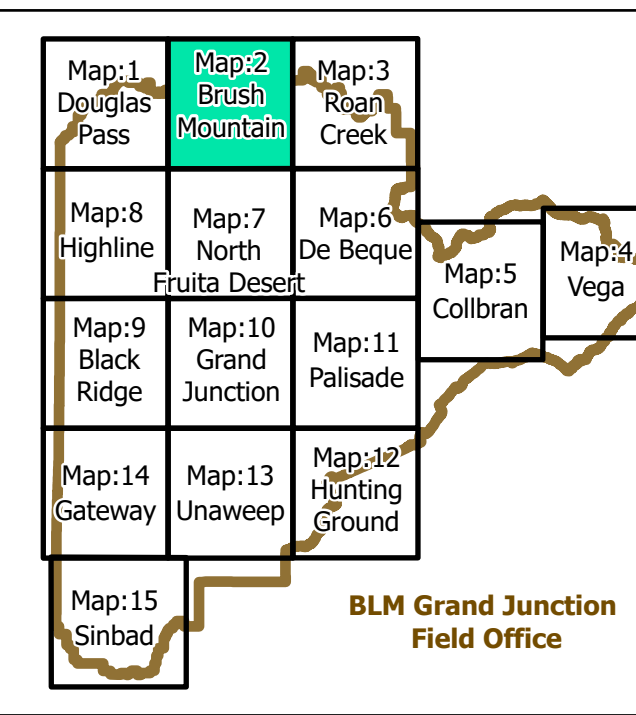


- State and US Highways
- County Maintained Roads
- Routes without BLM jurisdiction
- BLM Road and Trail Designations
 - Open to all modes of transportation
 - Open to ATV (<50 in), Motorcycles, Bikes, Hikers, and Equestrians
 - Open to Bikes, Hikers, and Equestrians
 - Undesignated
- Routes with seasonal restrictions
 - Closed December 1 - May 1
- Closed March 1 - May 15
- Seasonal Closure Areas
- County Boundaries
- Extensive Recreation Management Area (ERMA)
- BLM Grand Junction Field Office
- Bureau of Land Management
- Private
- State, County, City: Recreation Areas

Note: existing disturbance on the ground not shown on this map is not authorized for travel except foot/horse in most areas unless otherwise noted.

For more detailed recreation maps see the maps for each Special Recreation Management Area (SRMA) and Extensive Recreation Management Areas (ERMA)

Seasonal closure areas:
Post/Lapham Canyons : December 1 - May 1. See individual routes in Barrel Springs area : see note on map for closure dates



No warranty is made by the Bureau of Land Management as to the accuracy, reliability, or completeness of these data for individual use or aggregate use with other data, or for the purposes not intended by the BLM. Spatial information may not meet National Map Accuracy Standards. This information may be updated without notification.