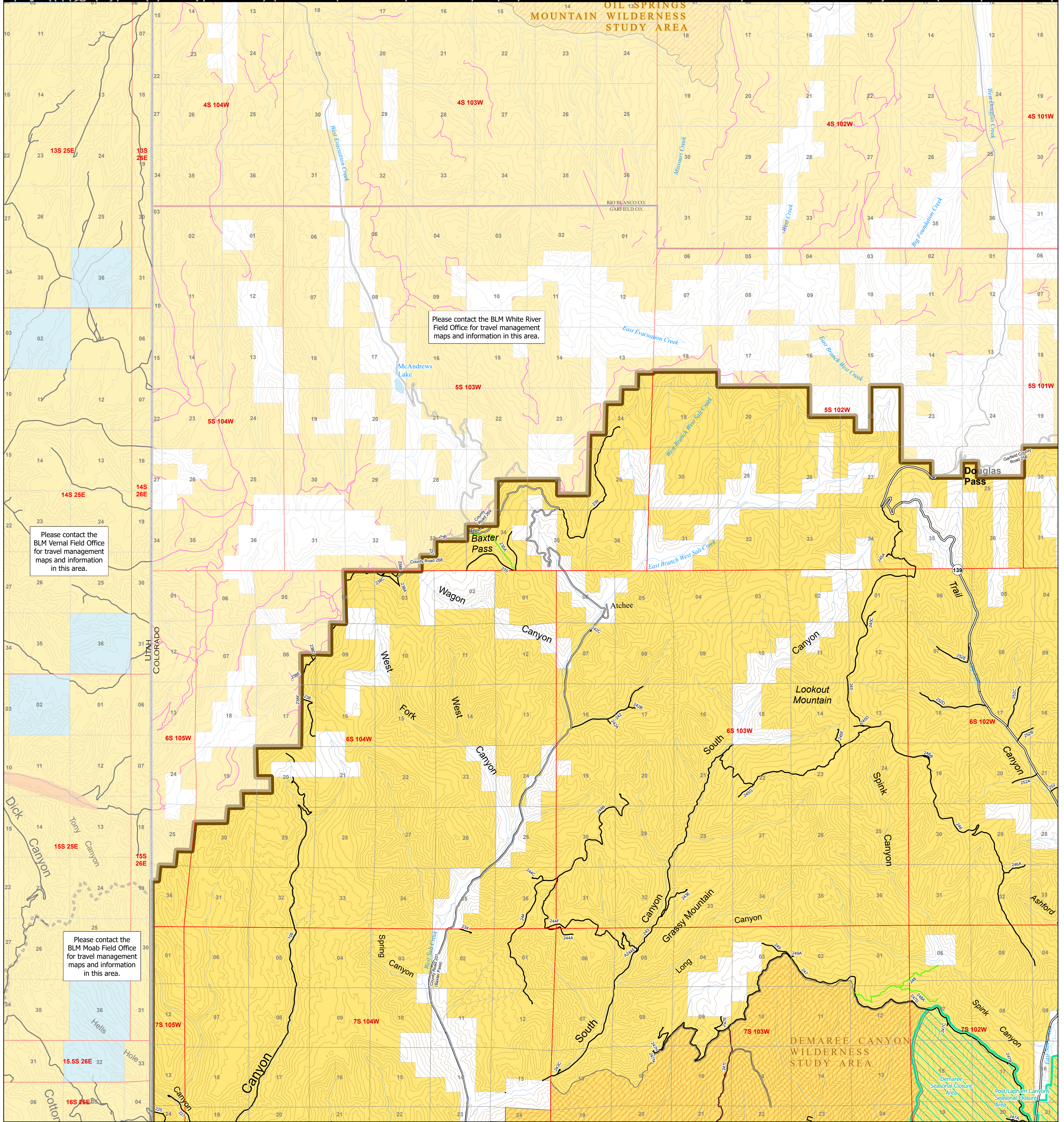




U.S. DEPARTMENT OF THE INTERIOR BUREAU OF LAND MANAGEMENT Grand Junction Field Office

COLORADO

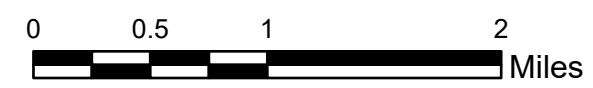
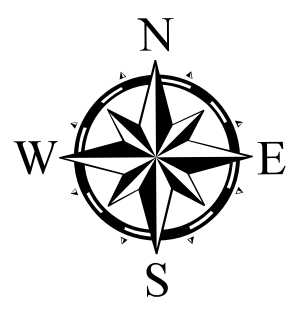
Travel Management Map 1 : Douglas Pass



Please contact the BLM White River Field Office for travel management maps and information in this area.

Please contact the BLM Vernal Field Office for travel management maps and information in this area.

Please contact the BLM Moab Field Office for travel management maps and information in this area.

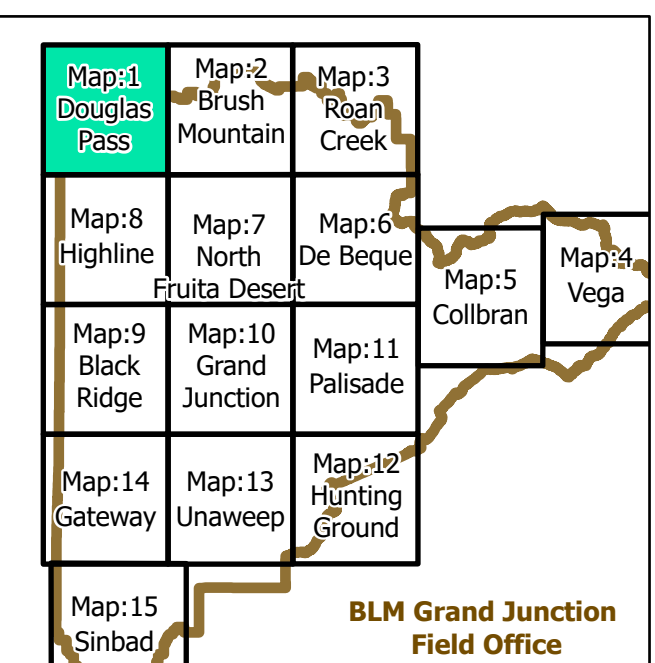


- State and US Highways
- County Maintained Roads
- Routes without BLM jurisdiction
- BLM Road and Trail Designations
 - Open to Equestrian and Hiking Only
 - Open to all modes of transportation
 - Open to ATV (<50 in), Motorcycles, Bikes, Hikers, and Equestrians
 - Undesignated
- Seasonal Closure Areas
- County Boundaries
- BLM Grand Junction Field Office
- BLM Wilderness Study Areas
- Bureau of Land Management
- Private

Note: existing disturbance on the ground not shown on this map is not authorized for travel except foot/horse in most areas unless otherwise noted.

For more detailed recreation maps see the maps for each Special Recreation Management Area (SRMA) and Extensive Recreation Management Areas (ERMA)

Seasonal closure areas:
Demaree : December 1 - May 1, Post/Lapham Canyons : December 1 - May 1



No warranty is made by the Bureau of Land Management as to the accuracy, reliability, or completeness of these data for individual use or aggregate use with other data, or for the purposes not intended by the BLM. Spatial information may not meet National Map Accuracy Standards. This information may be updated without notification.