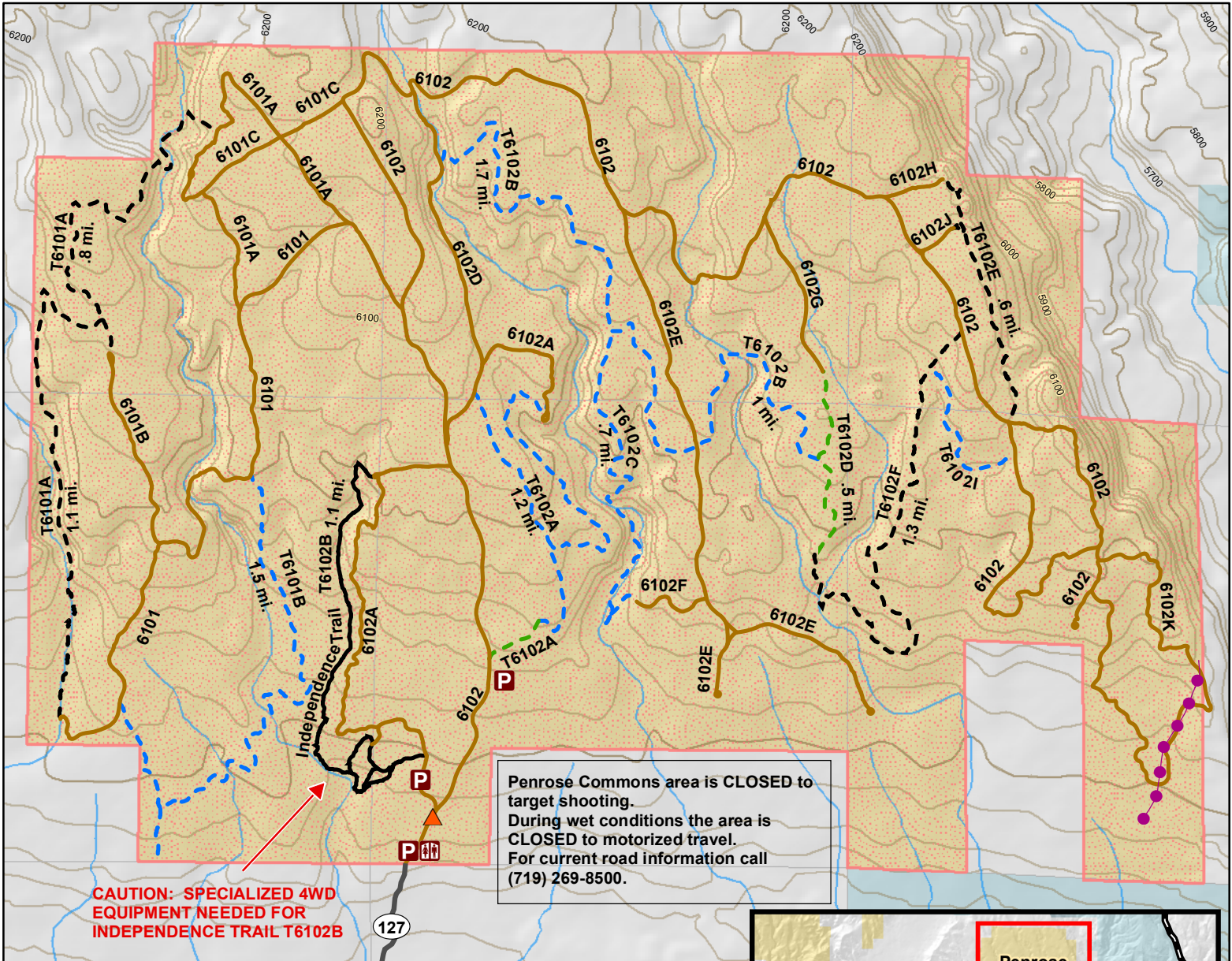
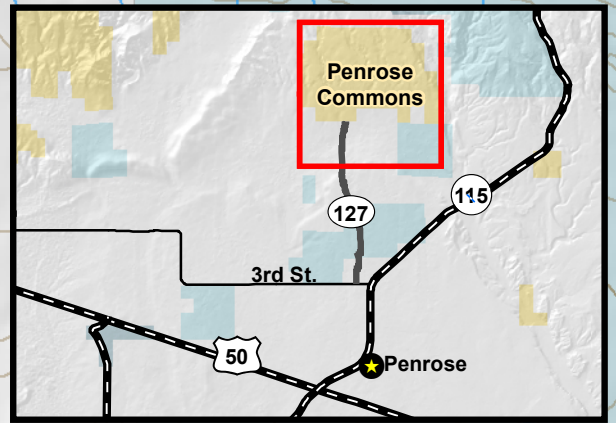




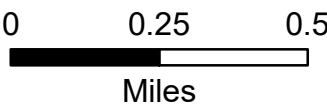
Penrose Commons



- | | | |
|----------------------------------------------------------------|--------------------------|----------------------------------------|
| Shared Motorized Trails (Foot, Horse, Bicycle, Motorized ≤50") | — Extreme 4WD | This area is closed to target shooting |
| Least Difficult | — Dirt Roads | BLM |
| More Difficult | Parking | State Lands |
| Most Difficult | Toilets | Private Lands |
| | Wet Weather Gate | |
| | Shaeffer Hydraulic Ditch | |



No warranty is made by the Bureau of Land Management as to the accuracy, reliability, or completeness of these data for individual use or aggregate use with other data, or for the purposes not intended by the BLM. Spatial information may not meet National Map Accuracy Standards. This information may be updated without notification. Current as of 8/12/2022



Travel Limited to Designated Methods

