

R8W

R7W

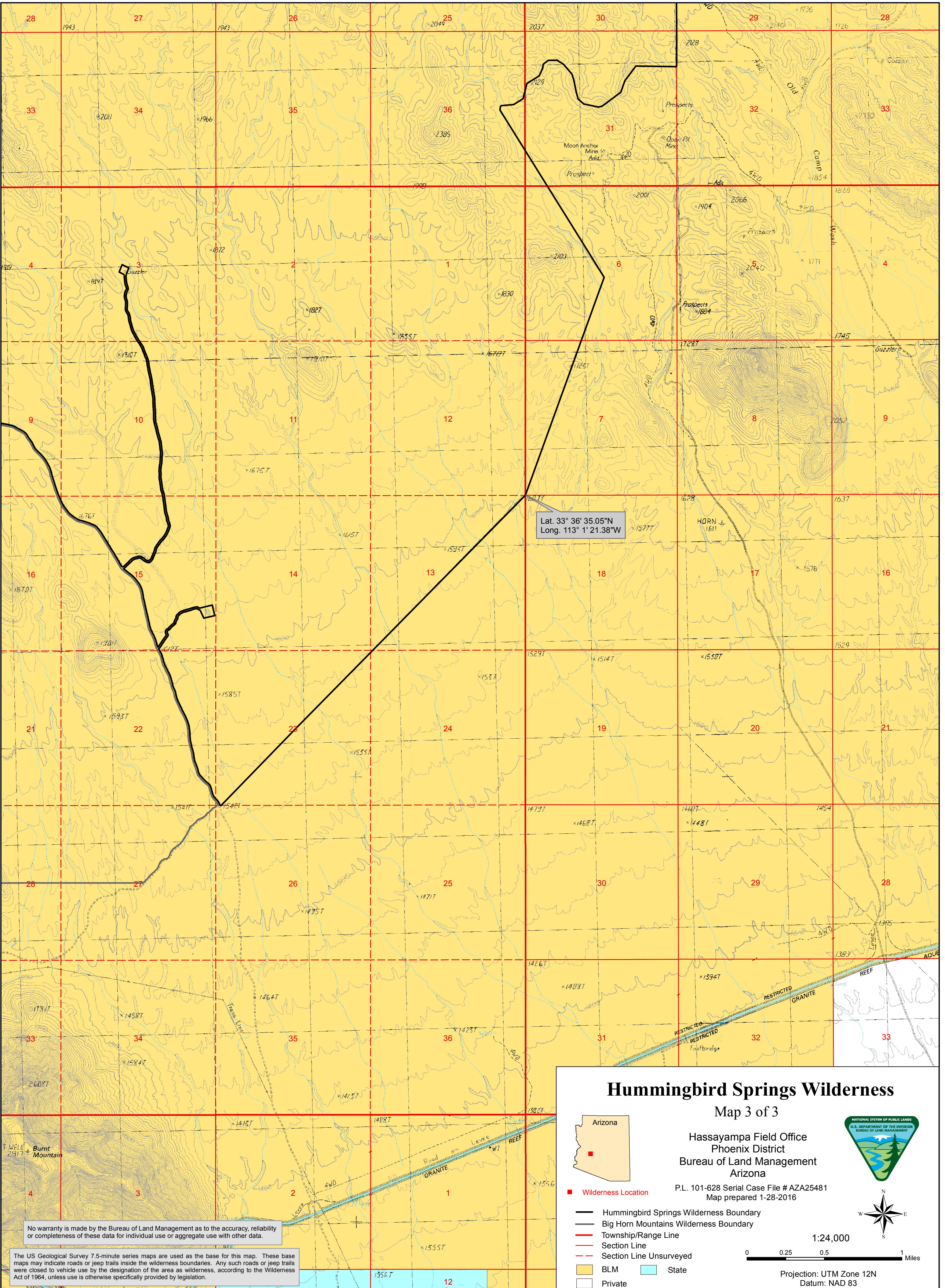
T 4 N

T 4 N

T 3 N

T 3 N

T 2 N



Lat. 33° 36' 35.05"N
 Long. 113° 1' 21.38"W

Hummingbird Springs Wilderness

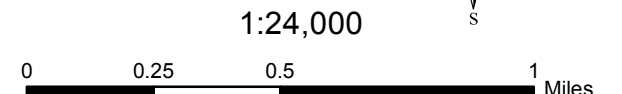
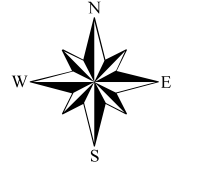
Map 3 of 3

Hassayampa Field Office
 Phoenix District
 Bureau of Land Management
 Arizona

P.L. 101-628 Serial Case File # AZA25481
 Map prepared 1-28-2016



- Wilderness Location
- Hummingbird Springs Wilderness Boundary
- Big Horn Mountains Wilderness Boundary
- Township/Range Line
- Section Line
- - - Section Line Unserved
- BLM
- State
- Private



Projection: UTM Zone 12N
 Datum: NAD 83

No warranty is made by the Bureau of Land Management as to the accuracy, reliability or completeness of these data for individual use or aggregate use with other data.

The US Geological Survey 7.5-minute series maps are used as the base for this map. These base maps may indicate roads or jeep trails inside the wilderness boundaries. Any such roads or jeep trails were closed to vehicle use by the designation of the area as wilderness, according to the Wilderness Act of 1964, unless use is otherwise specifically provided by legislation.

R8W

R7W