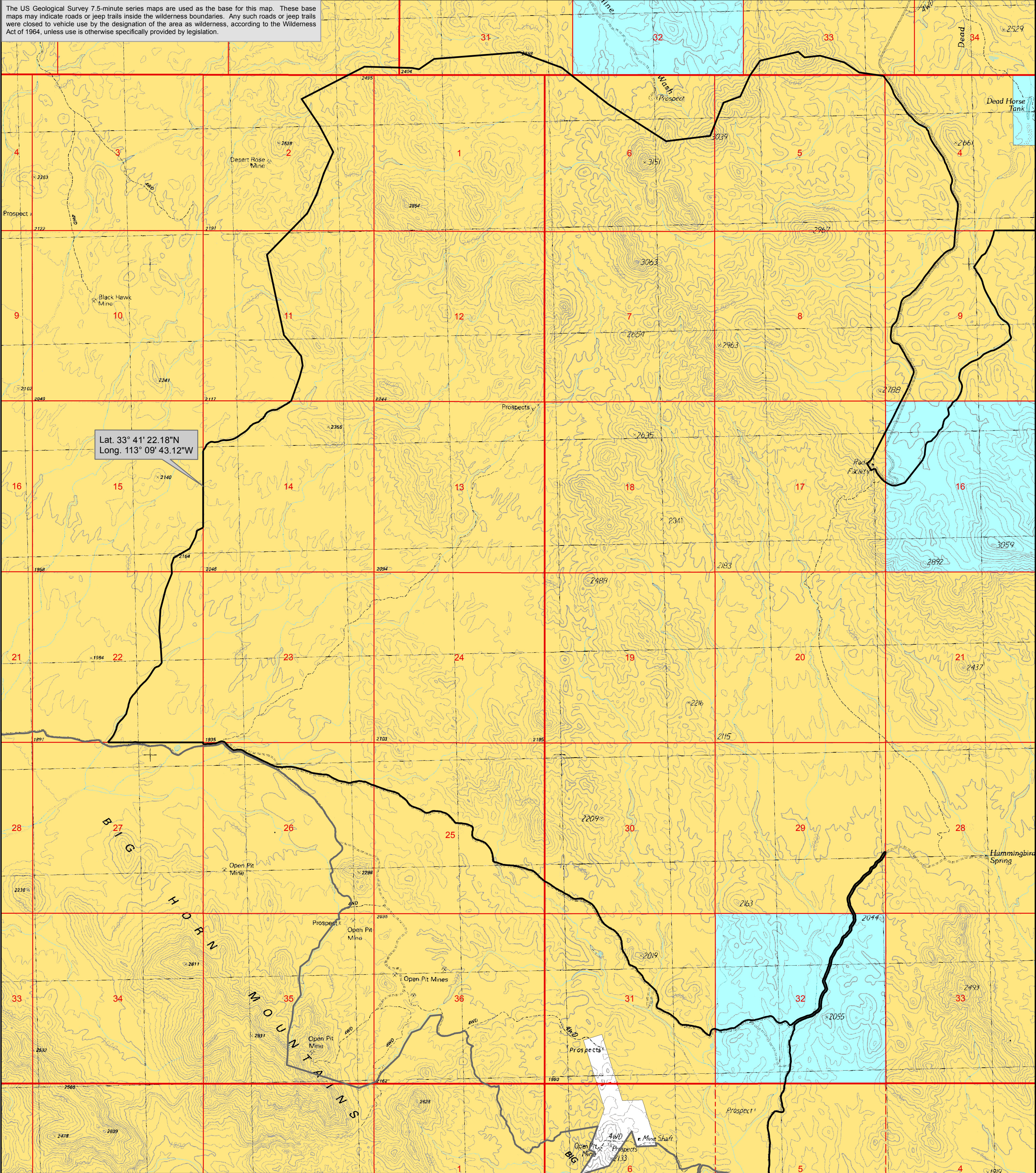


The US Geological Survey 7.5-minute series maps are used as the base for this map. These base maps may indicate roads or jeep trails inside the wilderness boundaries. Any such roads or jeep trails were closed to vehicle use by the designation of the area as wilderness, according to the Wilderness Act of 1964, unless use is otherwise specifically provided by legislation.



Lat. 33° 41' 22.18"N
Long. 113° 09' 43.12"W

Hummingbird Springs Wilderness

Map 1 of 3

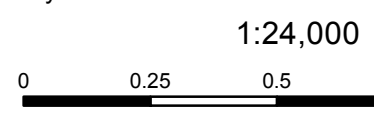
Hassayampa Field Office
Phoenix District
Bureau of Land Management
Arizona

P.L. 101-628 Serial Case File # AZA25481
Map prepared 1-28-2016

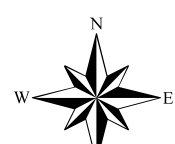


■ Wilderness Location

- Hummingbird Springs Wilderness Boundary
- Big Horn Mountains Wilderness Boundary
- Township/Range Line
- Section Line
- - - Section Line Unsurveyed
- BLM
- State
- Private



Projection: UTM Zone 12N
Datum: NAD 83



No warranty is made by the Bureau of Land Management as to the accuracy, reliability, or completeness of these data for individual use or aggregate use with other data.