



U.S. Department of the Interior
Bureau of Land Management

National Lands Conservation System

Recreation and Visitor Services





BLM National Landscape Conservation System - 15-year Strategy

1. Conserve, Protect, and Restore
2. Collaborate w/communities and interest groups.
Establish connections across jurisdictional boundaries
3. Partnerships
4. Commitment to Conservation



National Monuments

(BLM Manual 6220)

Objectives:

- Conserving, Protecting, and Restoring
- Manage valid existing rights and compatible uses (ROW's, Grazing, Mining, Oil and Gas)
- Manage discretionary uses (SRP's, Filming)
- Utilize science, local knowledge, partnerships (Paleontology, Cultural, Grazing, Recreation)
- Provide recreational opportunities, education, interpretation, and visitor services (Visitor Centers: Big Water, Kanab, Cannonville, and Escalante)



National Monuments (cont.)

(BLM Manual 6220)

Policies:

- Rights of Ways, Transmission lines, and utility corridors
- Facilities
- Land use Planning
- Lands and Realty
- Livestock Grazing
- Partnerships
- Recreation
- Travel and Transportation Management
- Withdrawals and Valid Existing Rights
- Wildland Fire Management



GSENM Recreation

Program Areas:

- Recreation
- Special Designations
- Travel Management
- Recreation Issue and Visitation Trends



GSENM Recreation

Recreation Manages:

- Visitor Centers, Trailheads and Facilities
 - Campgrounds
- Recreation Areas
 - Calf Creek & Deer Creek R.A.
- Education and interpretation
- Signage
- Monitoring (WSA, Natural Areas, Rec. sites)



GSENM Recreation

Special Designations:

- Wilderness Study Areas, aka Instant Study Areas
(16 WSA, 881,997 acres)
- Wild and Scenic Rivers (252 suitable river miles)
- National Historic Trails (Old Spanish Trail, 40 miles)
- Research Natural Areas (No Mans Mesa)
- Natural Areas (Wolverine Petrified wood, ONA)
- Historic Sites (Dance Hall Rock Historic Site)



Travel & Transportation Management

- Planning will be deferred until after the LUP.
- Route Inventory completed in 2018



GSENM Recreation Issues:

Increased Recreation visitation and demands

Need for Recreation infrastructure

Trailhead: Parking, toilets, campgrounds

Calf Creek Recreation Area

Staffing shortages in Recreation

Graffiti and vandalism – cultural sites and canyon walls

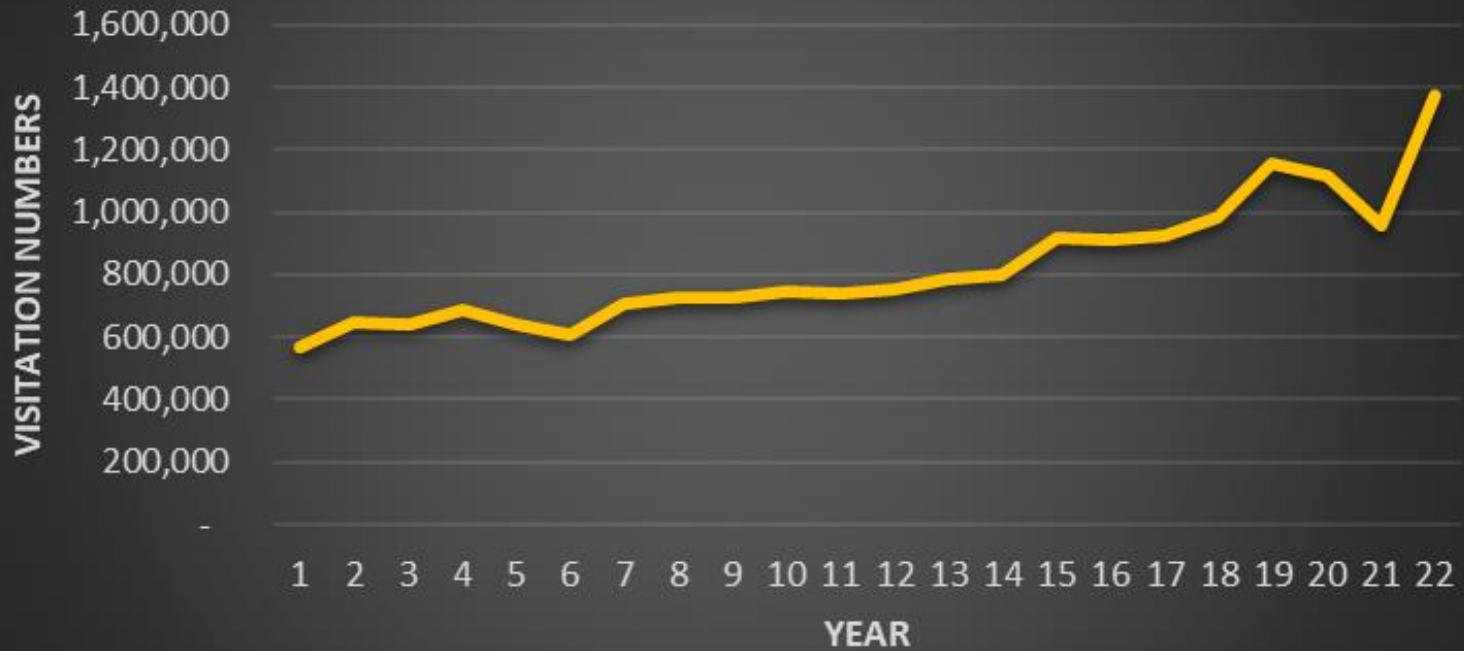
Human waste – improper disposal

OHV impacts: off route incursions



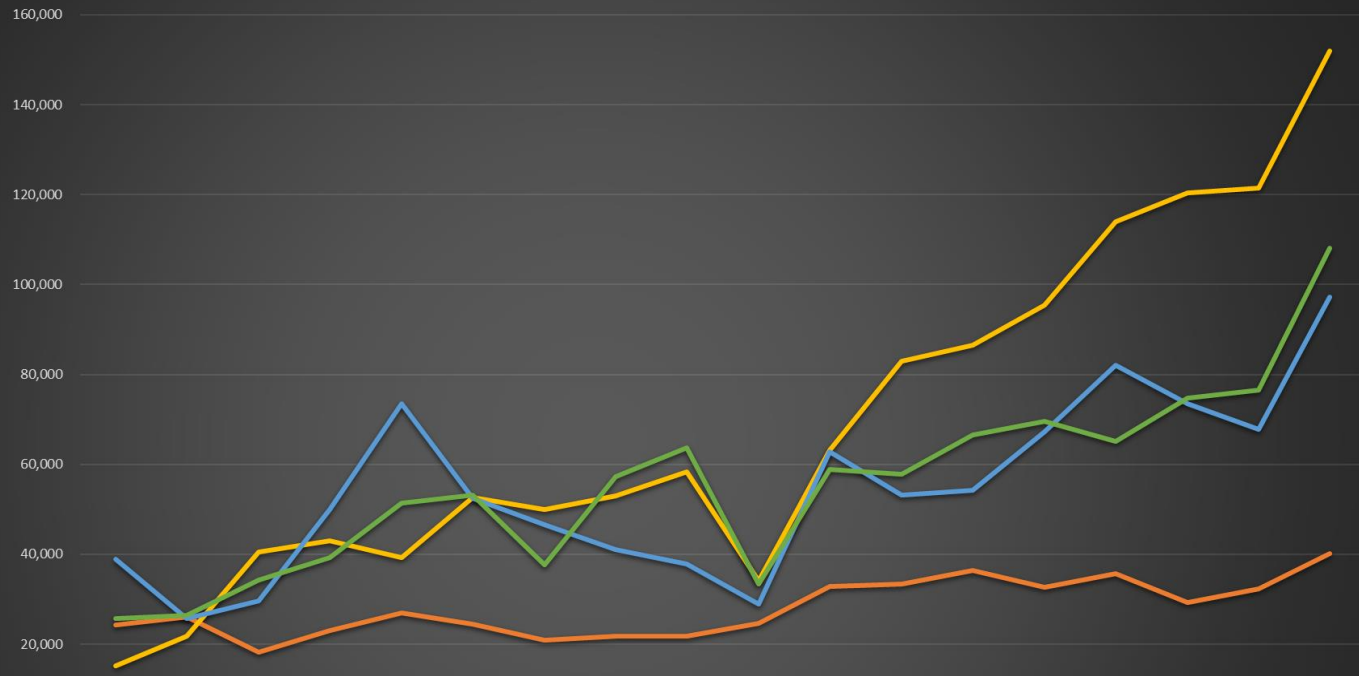
Recreation Visitation:

GSENM Visitation Trends





Recreation Visitation Trends:



	6	7	8	9	10	11	12	13	14	15	16	17	18	19	20	21	22	23
Lower Calf Creek Falls Trail	24,312	26,121	18,242	23,068	26,901	24,528	20,862	21,825	21,824	24,595	32,800	33,355	36,437	32,647	35,671	29,375	32,370	40,193
Hwy 12 Hole In The Rock	15,160	21,867	40,579	43,071	39,282	52,569	50,048	53,043	58,430	34,151	63,234	82,926	86,591	95,361	114,030	120,466	121,463	151,990
Cottonwood Road	38,833	25,710	29,727	49,983	73,445	52,510	46,618	41,035	37,840	28,862	62,844	53,203	54,187	67,287	82,100	73,478	67,792	97,165
Skutumpah Road	25,784	26,373	34,258	39,260	51,463	53,147	37,636	57,191	63,775	33,315	58,797	57,784	66,579	69,511	65,108	74,682	76,511	108,023



Questions?

