



**NATIONAL
CONSERVATION
LANDS**

Land Use Planning on the Monument

Understanding the Foundations and Basic Components of Current Resource Management Planning





U.S. Department of the Interior
Bureau of Land Management

Welcome!

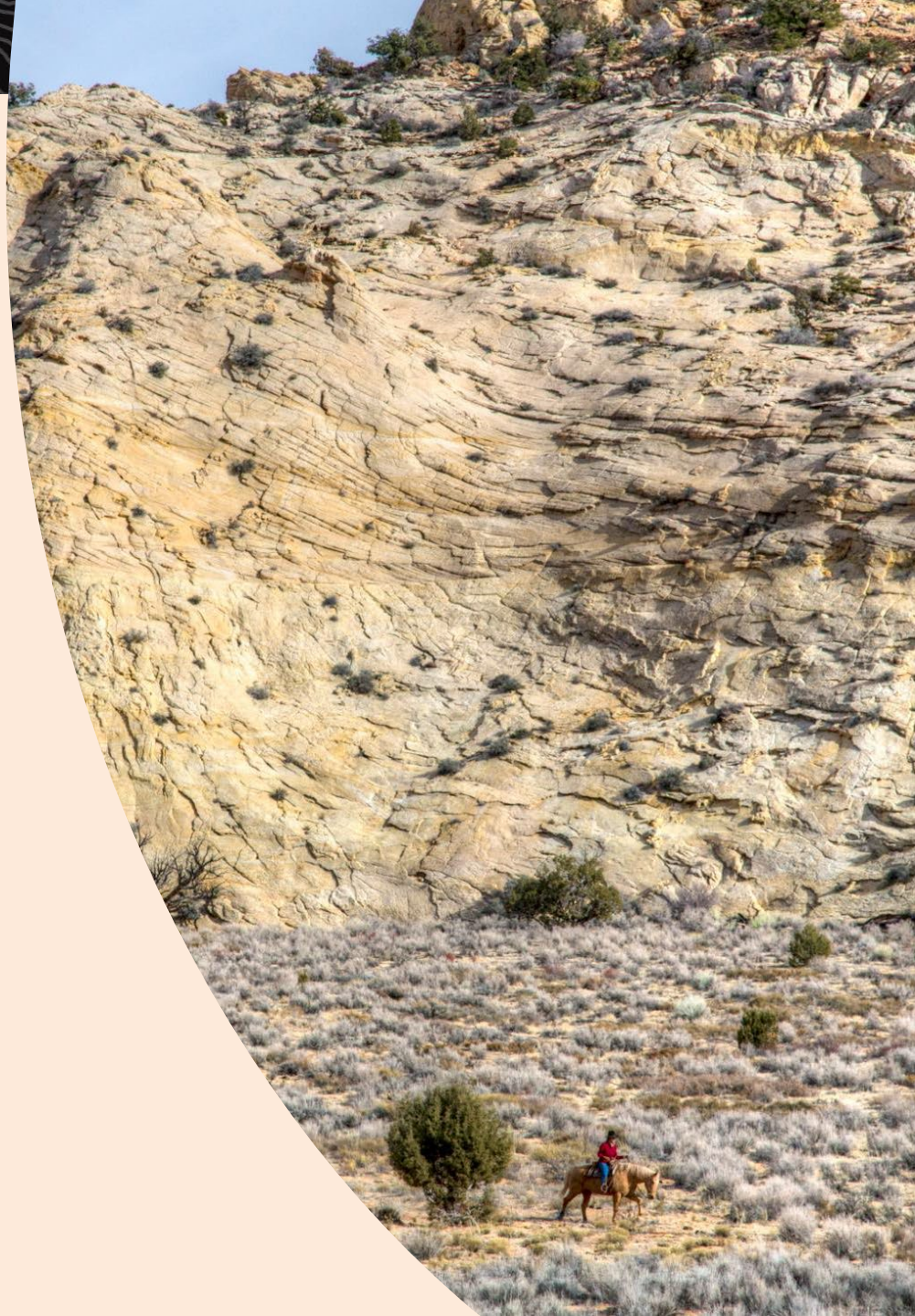
Artemisia Turiya
Planning and Environmental
Coordinator

Bureau of Land Management

Paria River District

669 S. Hwy 89A, Kanab, Utah 84741

435-899-1504, aturiya@blm.gov





Overview of this Presentation

- Foundational history for planning on the GSENM
- Proclamation 10286
- BLM Director's Interim Guidance
- The Land Use Planning Process
- Current Land Use Planning (new RMP)



Review of Monument Plans and Proclamations Timeline

Sept. 18
1996

PROCLAMATION 6920 DESIGNATED APPROXIMATELY 1.7 MILLION ACRES AS A NATIONAL MONUMENT, TO EMPHASIZE THE DIVERSE AND INTACT PHYSICAL, BIOLOGICAL, AND HISTORICAL RESOURCES THAT PROVIDE FOR A SCIENCE FOCUSED MONUMENT. THIS WAS THE FIRST TIME A NATIONAL MONUMENT WAS ESTABLISHED UNDER THE PURVIEW OF THE BLM. ADDITIONALLY, ESTABLISHING SUCH A BLM UNIT FOR SCIENTIFIC PURPOSES WAS AND IS UNIQUE.

Oct. 9
1998

FOLLOWING THE CREATION OF GSENM, CONGRESS PASSED THE UTAH SCHOOLS AND LAND EXCHANGE ACT, WHICH ADDED APPROXIMATELY 200,000 ACRES OF STATE LAND INHOLDINGS TO THE MONUMENT, FOR A TOTAL OF ABOUT 1.9 MILLION ACRES.

Nov. 15
1999

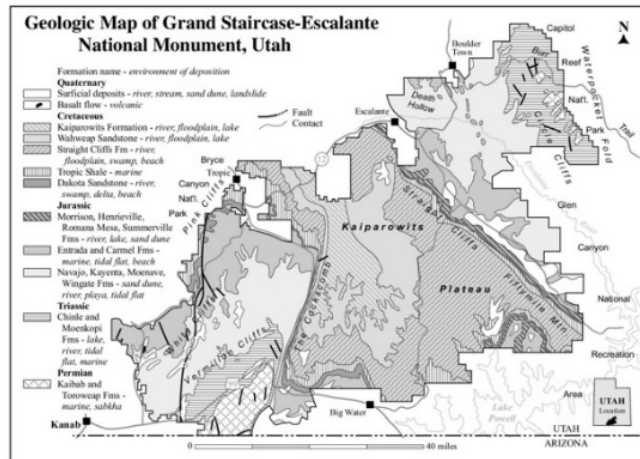
THE APPROVED MONUMENT MANAGEMENT PLAN WAS SIGNED AND BECAME EFFECTIVE IN FEB. 2000.

Dec. 4
2017

PROCLAMATION 9682 REDUCED THE MONUMENT SIZE BY 861,974 ACRES. MANAGEMENT OF THESE REMOVED LANDS WAS TRANSFERRED TO THE KANAB FIELD OFFICE AND DESIGNATED AS THE KANAB- ESCALANTE PLANNING AREA. PROCLAMATION 9682 ALSO DIVIDED GSENM INTO THREE DISTINCT UNITS, REDUCING ITS SIZE TO ABOUT 1 MILLION ACRES.

Oct. 15
2021

PROCLAMATION 10286 RESTORED MORE THAN 800,000 ACRES OF BLM-MANAGED LAND TO THE MONUMENT AND IDENTIFIED INNUMERABLE OBJECTS OF HISTORIC OR SCIENTIFIC INTEREST FOR PROTECTION, AND DESIGNATED THAT GSENM WILL BE MANAGED AS A SINGLE UNIT. PROCLAMATION 10286 WILL HELP ENSURE NEARLY 1.9 MILLION ACRES LOCATED IN SOUTH CENTRAL UTAH, WITHIN THE COLORADO PLATEAU GEOGRAPHIC REGION, REMAIN AN ECOLOGICAL, SCIENTIFIC, AND CULTURAL "LIVING LABORATORY" NATIONAL MONUMENT.





Proclamation 10286

October 8, 2021

- [Presidential Proclamation 10286](#) was issued by President Biden on October 8, 2021, restoring the Monument to approximately 1.9 million acres.
- Proclamation 10286 expands upon the range of diverse objects and values protected by Presidential Proclamation 6920 that President Clinton issued in 1996, first establishing the monument.
- Proclamation 10286 ensures protection of a variety of objects and values of historic and scientific interest including various geographic areas, geologic formations, diverse soils and associated communities, paleontological resources, human history, and outstanding biological resources, to name a few.
- Proclamation 10286 directs that “For purposes of protecting and restoring the objects identified above and in Proclamation 6920, the Secretary shall prepare and maintain a new management plan for the entire monument.”



Monument Purposes

Proclamation 10286

- The Monument serves as a unique outdoor laboratory for both basic and applied scientific research.
 - Research related directly related to Monument objects and values, studies that benefit from the Monument landscape setting, as well as studies of management of multiple-use within the Monument such as recreation and livestock grazing.
 - The Monument's size provides for science related to natural baselines, as well as changes due to external changes that are occurring on broad scales (for example, drought).
 - The Monument's design provides for scientific research in additional ways, such as inclusion of continuous timelines related to paleontology and an overall size that accommodates study replicate sites.



Monument Purposes

Proclamation 10286

Proclamation 10286 directs that the Monument will

“preserve its cultural, prehistoric, and historic legacy and maintain its diverse array of natural and scientific resources, ensuring that the prehistoric, historic, and scientific values of this area remain for the benefit of all Americans. Reservation of these lands will preserve the living laboratory within the monument boundaries that will facilitate significant scientific discoveries for years to come.”

While the proclamation acknowledges that the area provides “world-class outdoor recreation opportunities... that support a travel and tourism sector that is a source of economic opportunity for the region,” recreation opportunities are *not* considered Monument objects or values. Rather, recreation is a multiple-use within the Monument.



Monument Purposes

Proclamation 10286

The proclamation discusses certain multiple-use activities that are not considered Monument objects or values:

- The area “provides world-class outdoor recreation opportunities... that support a travel and tourism sector that is a source of economic opportunity for the region.”
- “The Secretary shall manage livestock grazing as authorized under existing permits or leases, and subject to appropriate terms and conditions in accordance with existing laws and regulations, consistent with the care and management of the objects identified... Should grazing permits or leases be voluntarily relinquished by existing holders, the Secretary shall retire from livestock grazing the lands covered by such permits or leases pursuant to the processes of applicable law. Forage shall not be reallocated for livestock grazing purposes unless the Secretary specifically finds that such reallocation will advance the purposes of this proclamation and Proclamation 6920.
- “Nothing in this proclamation shall be deemed to revoke any existing withdrawal, reservation, or appropriation; however, the monument shall be the dominant reservation.”

The relation between multiple-use management and preservation and restoration of Monument objects and values will be clarified in discussion of the BLM Director’s Interim Management Guidance within this presentation.



Interim Management Guidance

December 16, 2021

Guidance for “[Interim Management of the Grand Staircase-Escalante National Monument](#)” was issued in a memorandum from the BLM Director to the BLM-Utah State Director on December 16, 2021.

- This interim management guidance provides specific direction to ensure protection of Monument objects and values, consistent with Proclamation 10286, while a new resource management plan is developed.
- The memorandum directs BLM-Utah to begin preparing a new management plan, for the purposes of protecting and restoring the objects identified in the Proclamation, with a goal of finalizing that plan by March 2024.



Overview of Interim Management Guidance Mining and Mineral Leasing Activity

Subject to valid existing rights, Monument lands are “appropriated and withdrawn from all forms of entry, location, selection, sale, or other disposition under the public land laws, from location, entry, and patent under the mining laws, and from disposition under all laws relating to mineral and geothermal leasing, other than by exchange that furthers the protective purposes of the monument.”



Overview of Interim Management Guidance Discretionary Activities - General

The Interim Management Guidance states that

- Section 302 of the Federal Land Policy and Management Act (FLPMA) states that public lands should be managed under the principles of multiple use and sustained yield “except that where a tract of such public land has been dedicated to specific uses according to any other provisions of law it shall be managed in accordance with such law.”
- Proclamation 10286 dedicates the lands within the Grand Staircase to a specific use, therefore the lands reserved within the monument boundary must be managed in a manner that protects the objects and values for which the monument has been designated. In other words, within Grand Staircase, typical multiple use management is superseded by the direction in Proclamation 10286 to protect monument objects. Multiple uses are allowed only to the extent they are consistent with the protection of the objects and values within the monument. (Emphasis added)



Overview of Interim Management Guidance

Decisions Related to Discretionary Activities

“Two-Part Analysis”

For proposals within the boundaries of the monument or with the potential to affect objects and values for which the monument has been designated, BLM must undertake a two-part analysis:

- Conformance to the 2020 RMPs is necessary but not sufficient
- Proposals must be consistent with protection of Monument objects and values
 - Must consider types of activities that were allowable and/or authorized under the 2000 MMP



Overview of Interim Management Guidance Decisions Related to Discretionary Activities – Summary

For discretionary decisions before a new RMP is adopted, the BLM may allow activities only if BLM

- Determines the decision conforms to the applicable 2020 RMP,
- Determines the decision would be consistent with the protection of monument objects and values per proclamation 10286,
- Considers if the activity would have been consistent with the 2000 MMP,
- Ensures the NEPA analysis for the decision addresses potential impacts to monument objects and values, and
- Explains its determination for the above in the associated NEPA review.

The BLM inventoried existing discretionary uses last winter



Overview of Interim Management Guidance

Monitoring for ongoing protection

- Review existing monitoring plans and update them to provide for proactive monitoring
- The new RMP should include compliance checks for existing facilities
- Approved uses should include adequate monitoring



Overview of Interim Management Guidance

Discretionary Activities – Recreation Management

- Recreational opportunities do not relate directly to purposes for which the Monument was designated.
- Proposed recreation uses must be consistent with the proclamation in order to be authorized, including consideration for renewal, regardless of past permitting.



Overview of Interim Management Guidance

Discretionary Activities – Grazing Management

- Proclamation 10286 explains that, while BLM-UT should manage livestock grazing as currently authorized, grazing activities must be consistent with the care and management of Monument objects and values.
- *BLM Manual 6220 - National Monuments, National Conservation Areas, and Similar Designations* provides general policy guidance for managing grazing in BLM's national monuments.
- When the BLM is considering a grazing permit or lease for renewal, the decision must be consistent with the existing plan and ensure protection of the monument objects and values.



Overview of Interim Management Guidance

Discretionary Activities – Vegetation Management

BLM staff should review vegetation management proposals with particular care to ensure protection of Monument objects and values.



Overview of Interim Management Guidance

Discretionary Activities – Other Priorities

- Inventory Monument objects and values by December 16, 2022.
- Establish a Monument Advisory Committee
 - To provide “information and advice regarding the development of a management plan, and as appropriate management of the monument, including scientific research that occurs therein.”
 - To include representatives from “State and local governments, Tribal Nations, recreational users, conservation organizations, educators, local business owners, private landowners, and the scientific community, which may include members with expertise in archaeology, paleontology, entomology, geology, botany, wildlife biology, social science, or systems ecology.”



Overview of Interim Management Guidance

Completion of a Management Plan

- Prepare a new management plan
- The existing 2020 management plans remain in effect until the BLM approves a new plan
- Prioritize consultation with Tribes and maximize stakeholder involvement
- Issue a Record of Decision in 2024



Current Resource Management Plans

Grand Staircase-Escalante National Monument and Approved Management Plan and Record of Decision, February 2020

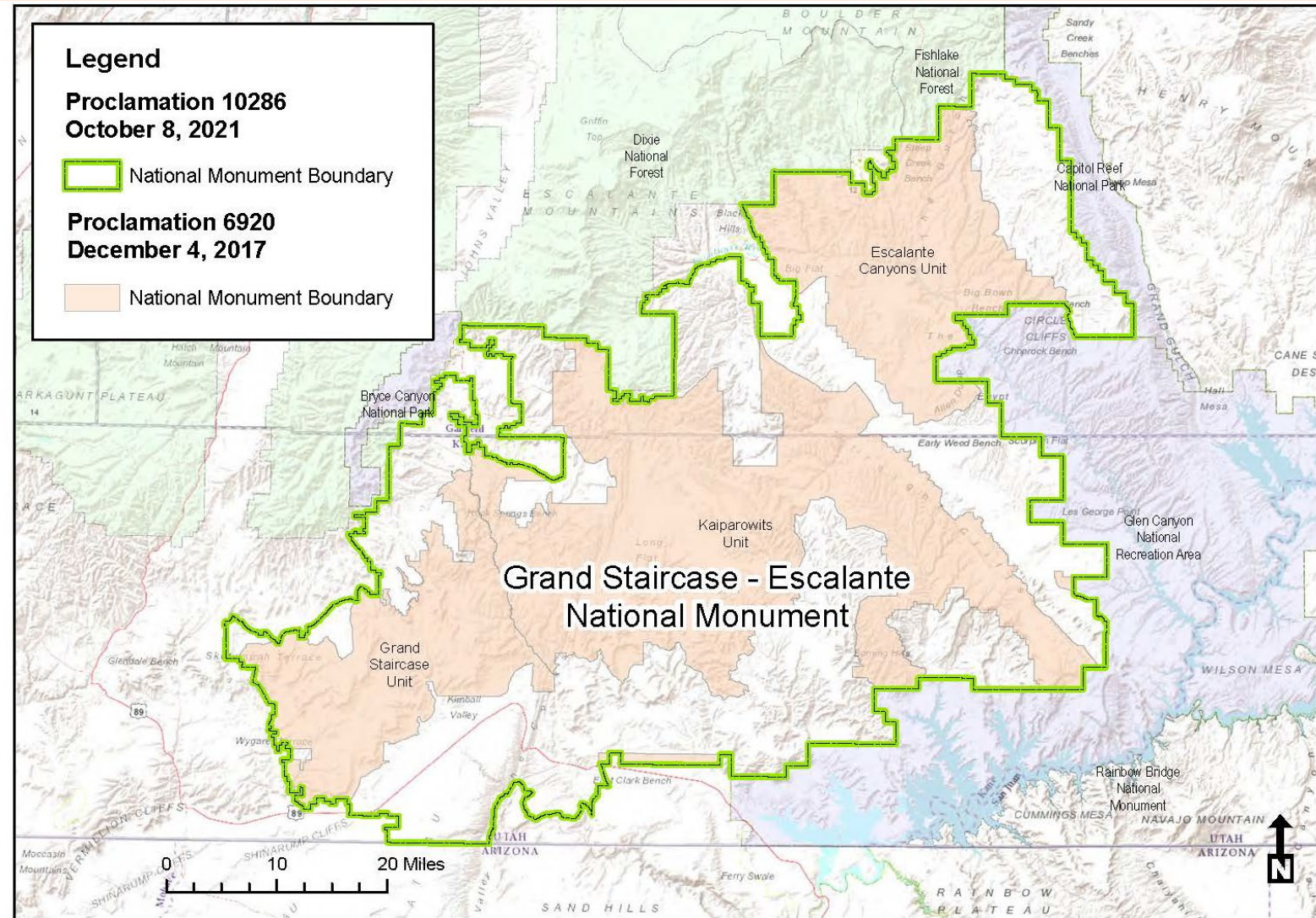
Kanab-Escalante Planning Area Approved Management Plan and Record of Decision, February 2020

- The 2020 GSENM RMP covers approximately 1,004,000 acres
- The 2020 Kanab-Escalante Planning Area (KEPA) RMP covers approximately 862,000 acres



Current Resource Management Plans

Grand Staircase-Escalante National Monument and Approved Management Plan and Record of Decision, February 2020
Kanab-Escalante Planning Area Approved Management Plan and Record of Decision, February 2020





Current Resource Management Planning Process

- Environmental Impact Statement
- Resource Management Plan

*These are Iterative Processes with
Stakeholder Involvement and Transparency*



Planning Component Timeline

Notice of Intent (NOI) – July 2022

Analysis of the Management Situation (AMS) – August 2022

Close of Public Scoping on NOI – September 2022

Draft RMP/EIS – March 2023

Close of Public Comment Period on Draft RMP/EIS – June 2023

Proposed RMP/Final EIS – December 2023

Protest Period* on Proposed RMP/Final EIS – December 2023

Approved RMP/Record of Decision – March 2024

* Requires Standing



U.S. Department of the Interior
Bureau of Land Management

Your Questions?

Artemisia Turiya Planning and Environmental Coordinator

Bureau of Land Management, Paria River
District

669 S. Hwy 89A, Kanab, Utah 84741

435-899-1504, aturiya@blm.gov

