

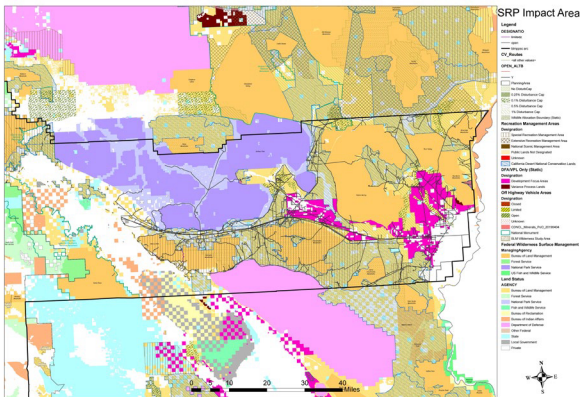


CALIFORNIA

Palm Springs-South Coast Field Office

Recreation Fee Program Spending & Accomplishment Highlights 2021

Motorized Touring EA



Designated Motorized Routes and allocations

The Palm Springs-South Coast Field Office undertook an Environmental Analysis regarding Motorized Commercial Tours across two land-use planning areas. The EA was written by BLM staff and established desired use levels for this activity based on recreation setting, critical species habitat, and other factors. The Decision Record and FONSI were signed in November 2021, so the document will be reported as an accomplishment in FY22.

Developed Camping



Corn Springs Campground

Recreation Fee dollars were utilized to maintain, manage, and patrol four developed campgrounds. Three campgrounds have onsite volunteer campground hosts, water systems, vault toilets, and dump stations.

Recreation Fee Dollars

Recreation fee dollars are an investment in outdoor recreation. Current and future generations benefit as 100% of the funds collected are reinvested in the facilities and services that visitors enjoy, use, and value.

They support and enhance:

- Maintenance, repair, and facility enhancement related directly to visitor enjoyment, visitor access, and health and safety
- Interpretation, visitor information, visitor service, visitor needs assessments, and signs
- Habitat restoration directly related to wildlife- dependent recreation that is limited to hunting, fishing, wildlife observation, or photography
- Law enforcement related to public use and recreation Direct operating or capital costs associated with the recreation fee program



Other Accomplishments

- Issued four special recreation permits

Vicinity Map



Contacts

Palm Springs-South Coast Field Office

Recreation Fee Program Contact

Phone Number: (760) 833-7100

Email: BLM_CA_Web_PS@blm.gov

Web: <https://www.blm.gov/office/palm-springs-south-coast-field-office>

District Contact

Phone Number: (760) 833-7100

Email: BLM_CA_Web_CD@blm.gov

Revenue & Expenditures

FY21 Revenue

Recreation Use Permits (RUPs)	\$2,585.94
Special Recreation Permits (SRPs)	\$2,336.51
Individual Special Recreation Permits	\$13,428.00
Interagency Passes	\$2,160.00
Total Recreation Fee Revenue for FY21	\$20,510.45

FY21 Expenditures

Repair & Maintenance	\$8,677.76
Visitor Services	\$7,627.96
Law Enforcement	\$2,196.74
Habitat Restoration	\$915.31
Collections/Overhead	\$2,133.79
Total Recreation Fee Expenditures for FY21	\$21,551.56



Planned Activities



Mule Mountain Long Term Visitor Area

- Maintain and manage the four campgrounds
- Issue at least five special recreation permits
- Update business plan for Field Office
- Americorps NCCC improvements at Mule Mountains LTVA

FY22 Planned Expenditures

Repair & Maintenance	\$9,000.00
Visitor Services	\$8,000.00
Law Enforcement	\$3,000.00
Habitat Restoration	\$2,500.00
Collections/Overhead	\$2,500.00
Total Recreation Fee Expenditures for FY22	\$25,000.00
FY21 End of Year Carryover	\$0.00
FY22 Projected Revenue	\$20,500.00

Connecting with Communities

The Palm Springs Field Office coordinates recreation planning activities through several working groups, typically based on county-level planning areas. Updating the business plan will be done in coordination with the Desert Advisory Council, composed of members of the public. It will ensure that developed recreation, special recreation permits, and future fee sites serve the recreation community targeting diverse populations of San Diego, Riverside, Los Angeles, Orange, and San Bernardino counties.

