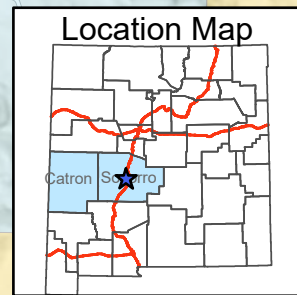
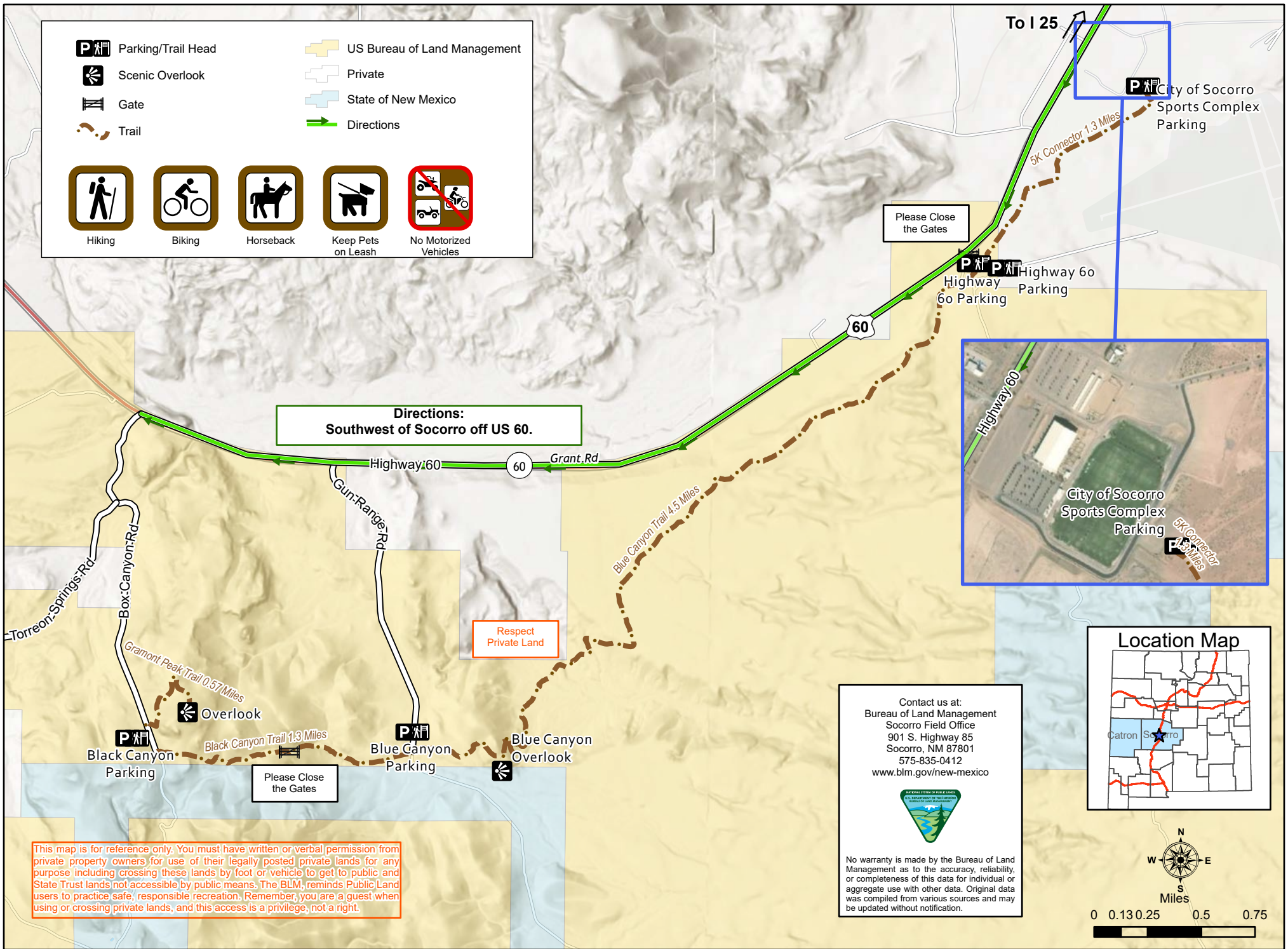


Blue Canyon Trail

	Parking/Trail Head		US Bureau of Land Management
	Scenic Overlook		Private
	Gate		State of New Mexico
	Trail		Directions

Hiking	Biking	Horseback	Keep Pets on Leash	No Motorized Vehicles

Directions:
Southwest of Socorro off US 60.



Contact us at:
Bureau of Land Management
Socorro Field Office
901 S. Highway 85
Socorro, NM 87801
575-835-0412
www.blm.gov/new-mexico



No warranty is made by the Bureau of Land Management as to the accuracy, reliability, or completeness of this data for individual or aggregate use with other data. Original data was compiled from various sources and may be updated without notification.

This map is for reference only. You must have written or verbal permission from private property owners for use of their legally posted private lands for any purpose including crossing these lands by foot or vehicle to get to public and State Trust lands not accessible by public means. The BLM reminds Public Land users to practice safe, responsible recreation. Remember, you are a guest when using or crossing private lands, and this access is a privilege, not a right.

