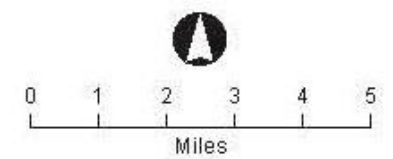


**Legend**

-  State Highway
-  Rough Hat Clark County Project Site
-  State Boundary
-  County Boundary
-  Incorporated City Boundary



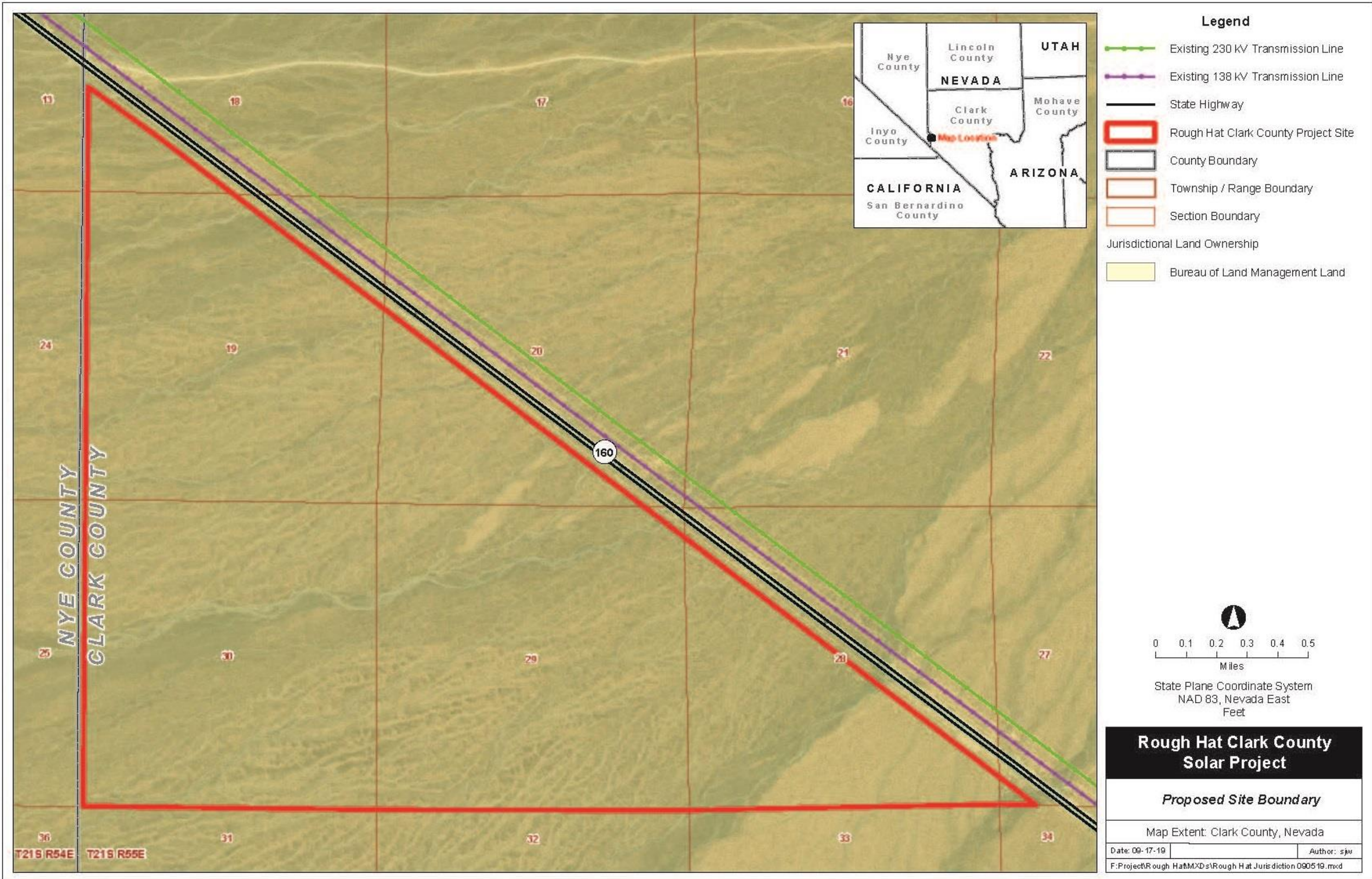
Universal Transverse Mercator  
 North American Datum 1983  
 Zone 11 North, Meters

**Rough Hat Clark County  
 Solar Project**

**REGIONAL LOCATION**


Map Extent: Nye & Clark Counties, Nevada  
 Date: 09-17-19 Author: sjw  
 F:\Project\Rough Hat\MXDs\RH Regional Location 091719.mxd





**Legend**

-  Existing 230 kV Transmission Line
-  Existing 138 kV Transmission Line
-  State Highway
-  Rough Hat Clark County Project Site
-  County Boundary
-  Township / Range Boundary
-  Section Boundary
- Jurisdictional Land Ownership**
-  Bureau of Land Management Land

  
 0 0.1 0.2 0.3 0.4 0.5  
 Miles  
 State Plane Coordinate System  
 NAD 83, Nevada East  
 Feet

**Rough Hat Clark County  
Solar Project**

*Proposed Site Boundary*

Map Extent: Clark County, Nevada

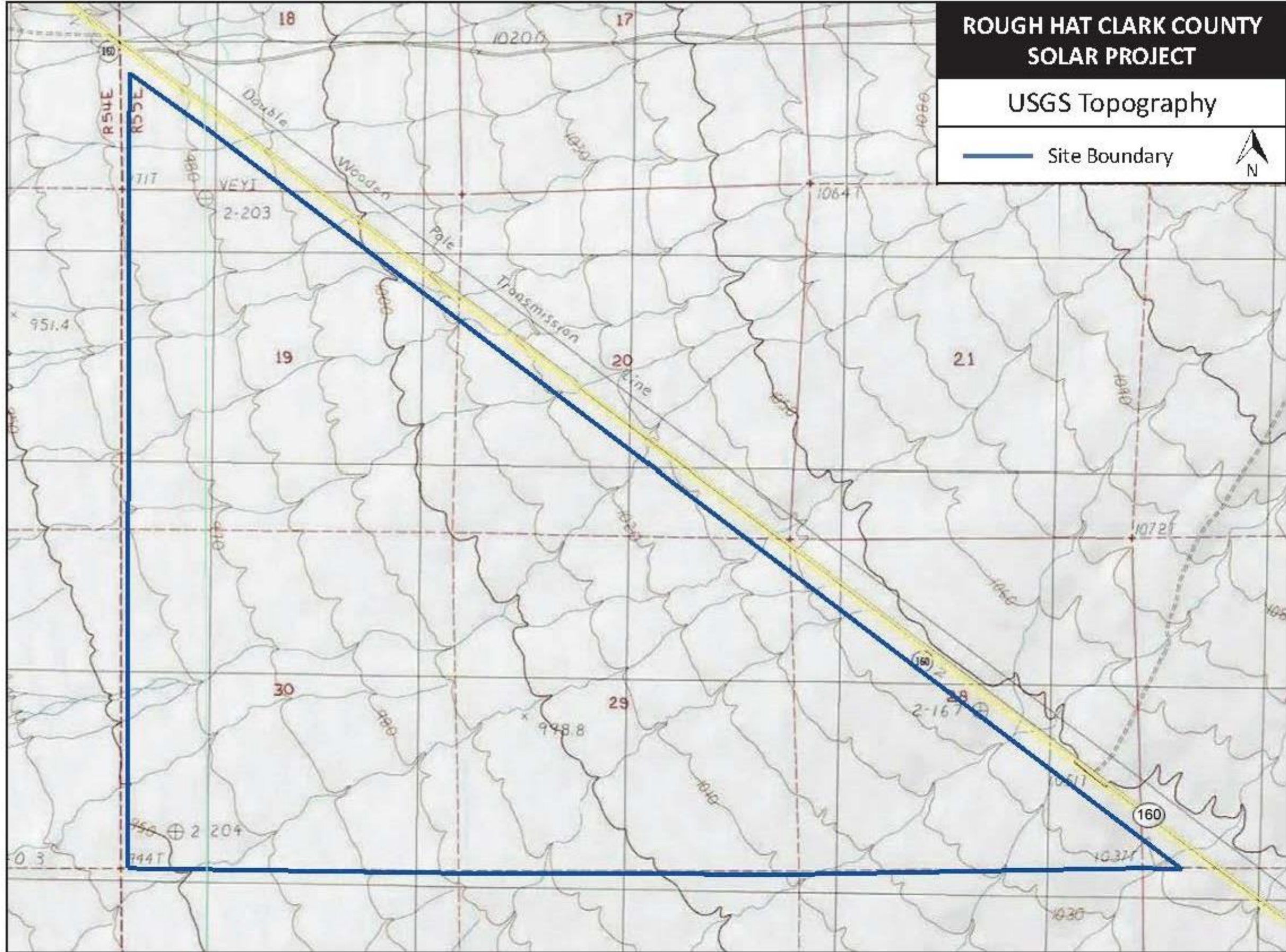
|  |             |
|--|-------------|
| Date: 09-17-19   | Author: sjw |
| F:\Project\Rough Hat\MXD\s\Rough Hat Jurisdiction 090519.mxd |             |



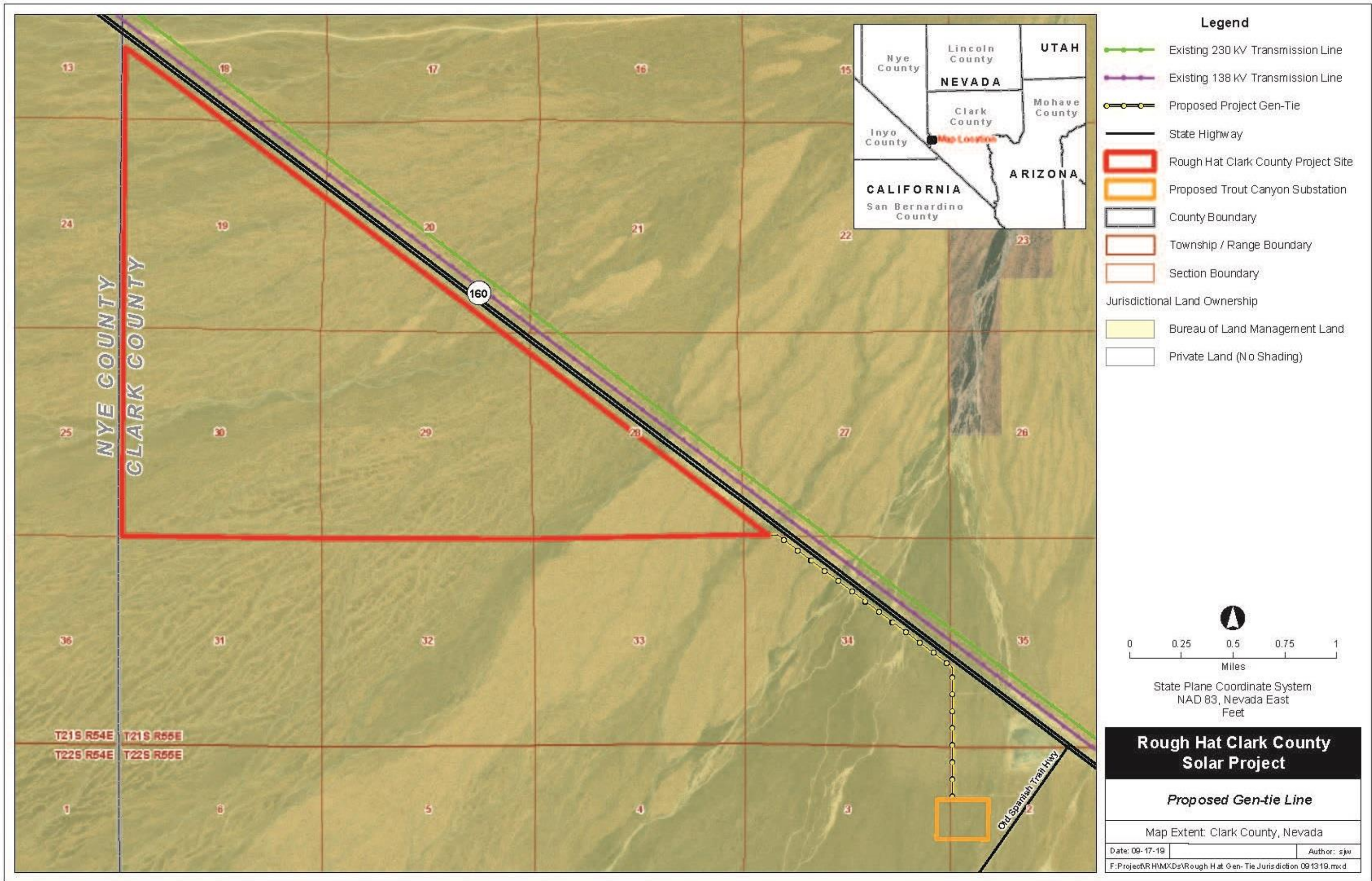
# ROUGH HAT CLARK COUNTY SOLAR PROJECT

USGS Topography

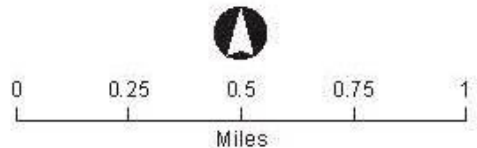
— Site Boundary







- ### Legend
- Existing 230 kV Transmission Line
  - Existing 138 kV Transmission Line
  - Proposed Project Gen-Tie
  - State Highway
  - Rough Hat Clark County Project Site
  - Proposed Trout Canyon Substation
  - County Boundary
  - Township / Range Boundary
  - Section Boundary
- Jurisdictional Land Ownership
- Bureau of Land Management Land
  - Private Land (No Shading)



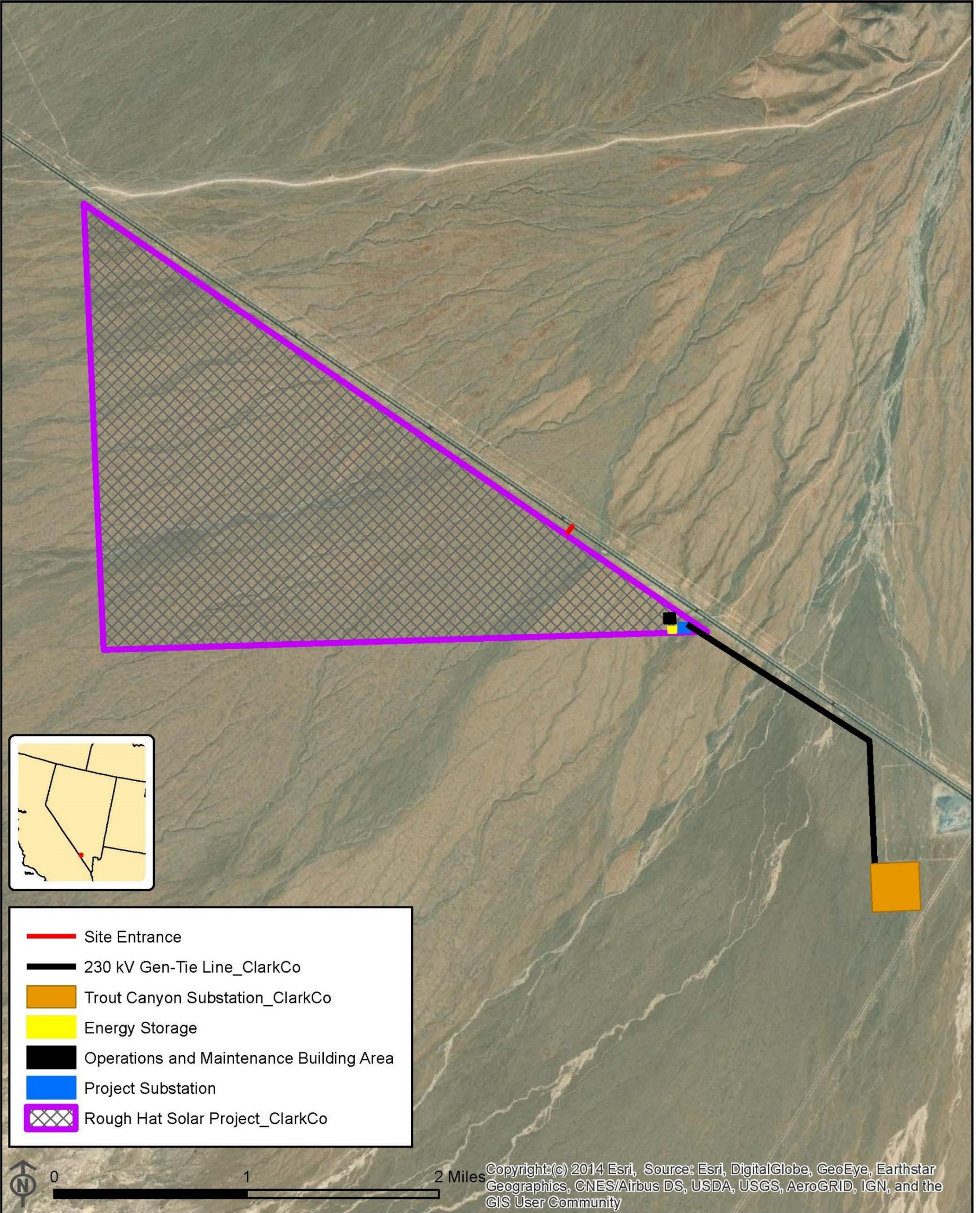
State Plane Coordinate System  
NAD 83, Nevada East  
Feet

## Rough Hat Clark County Solar Project

*Proposed Gen-tie Line*

Map Extent: Clark County, Nevada  
Date: 09-17-19 Author: sjw  
F:\Project\RH\MXDs\Rough Hat Gen-Tie Jurisdiction 091319.mxd












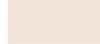
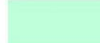
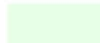






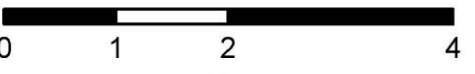




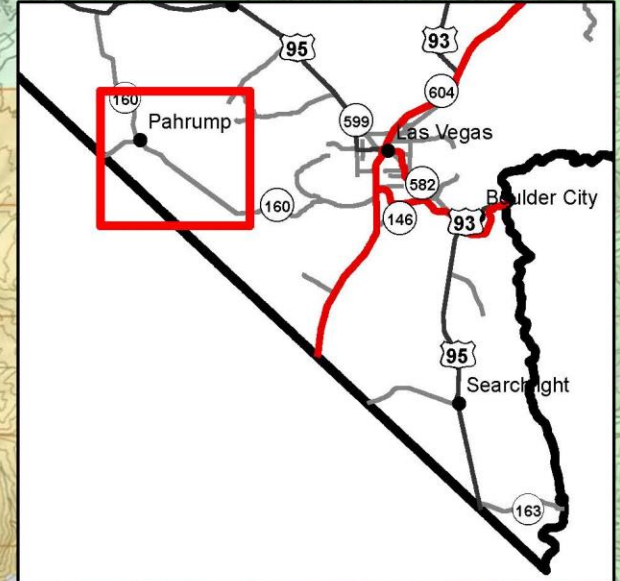
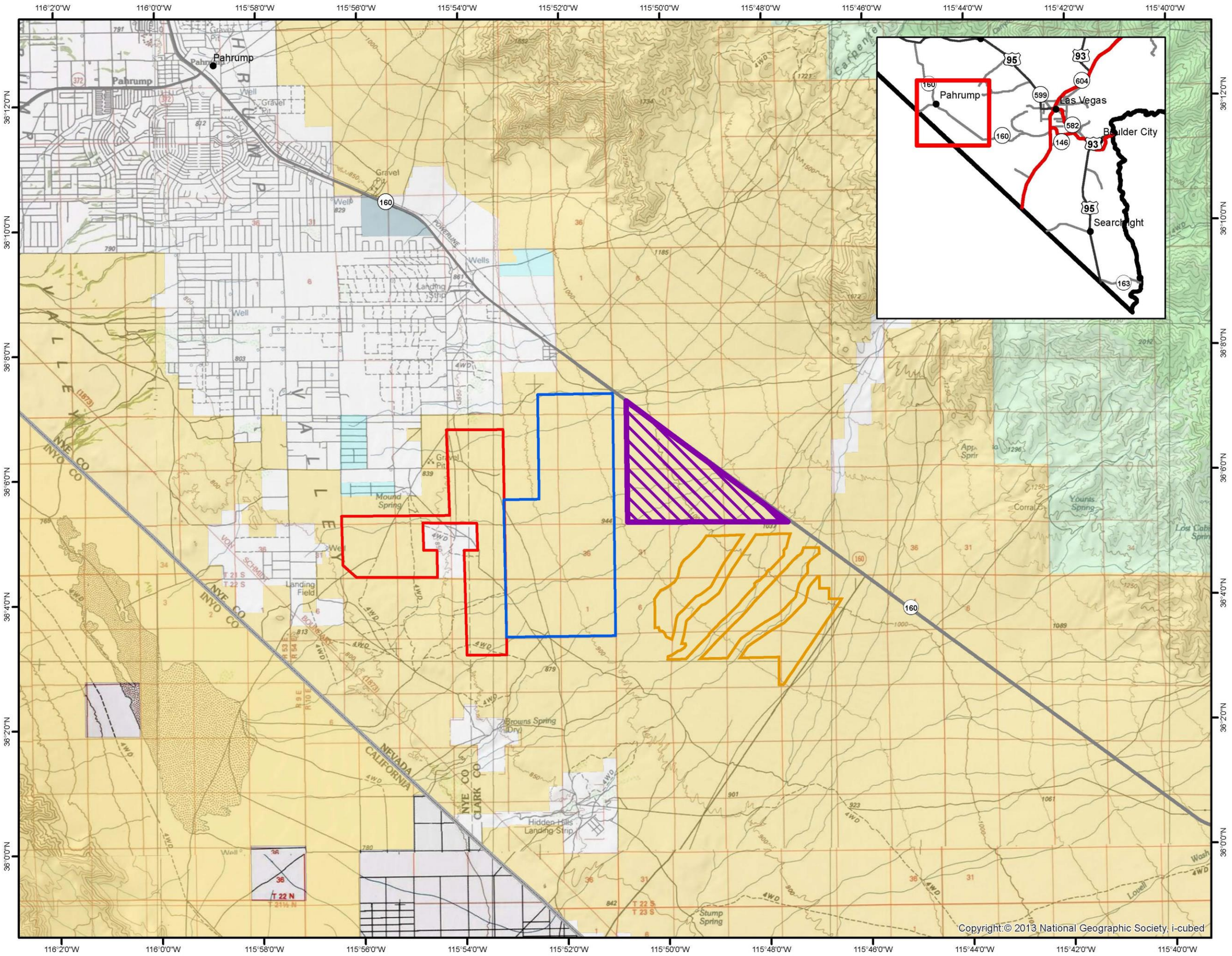
**BLM**  
**Southern Nevada**  
**District Office**  
 Rough Hat Clark County,  
 Rough Hat Nye County,  
 and Copper Rays  
 Solar Projects

**Legend**

- Cities & Towns
-  Yellow Pine Solar Project (approved)
-  Copper Rays (proposed)
-  Rough Hat - Nye (proposed)
-  Rough Hat - Clark (proposed)
-  US Highways
-  State Highways
-  State Boundary
-  Bureau of Indian Affairs
-  Bureau of Land Management
-  Bureau of Reclamation
-  Department of Defense
-  Department of Energy
-  Fish and Wildlife Service
-  Forest Service
-  National Park Service
-  Nevada State
-  Local Government
-  Private



Lat Long Grid - UTM Zone 11, NAD 1983  
 Degrees Minutes Seconds  
 Prepared By: SNDO E&I Staff on 11/24/2021  
 No warranty is made by the BLM as to the accuracy, reliability, or completeness of these data for individual use or aggregate use with other data.



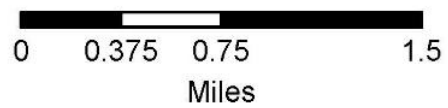


**BLM  
Southern Nevada  
District Office**

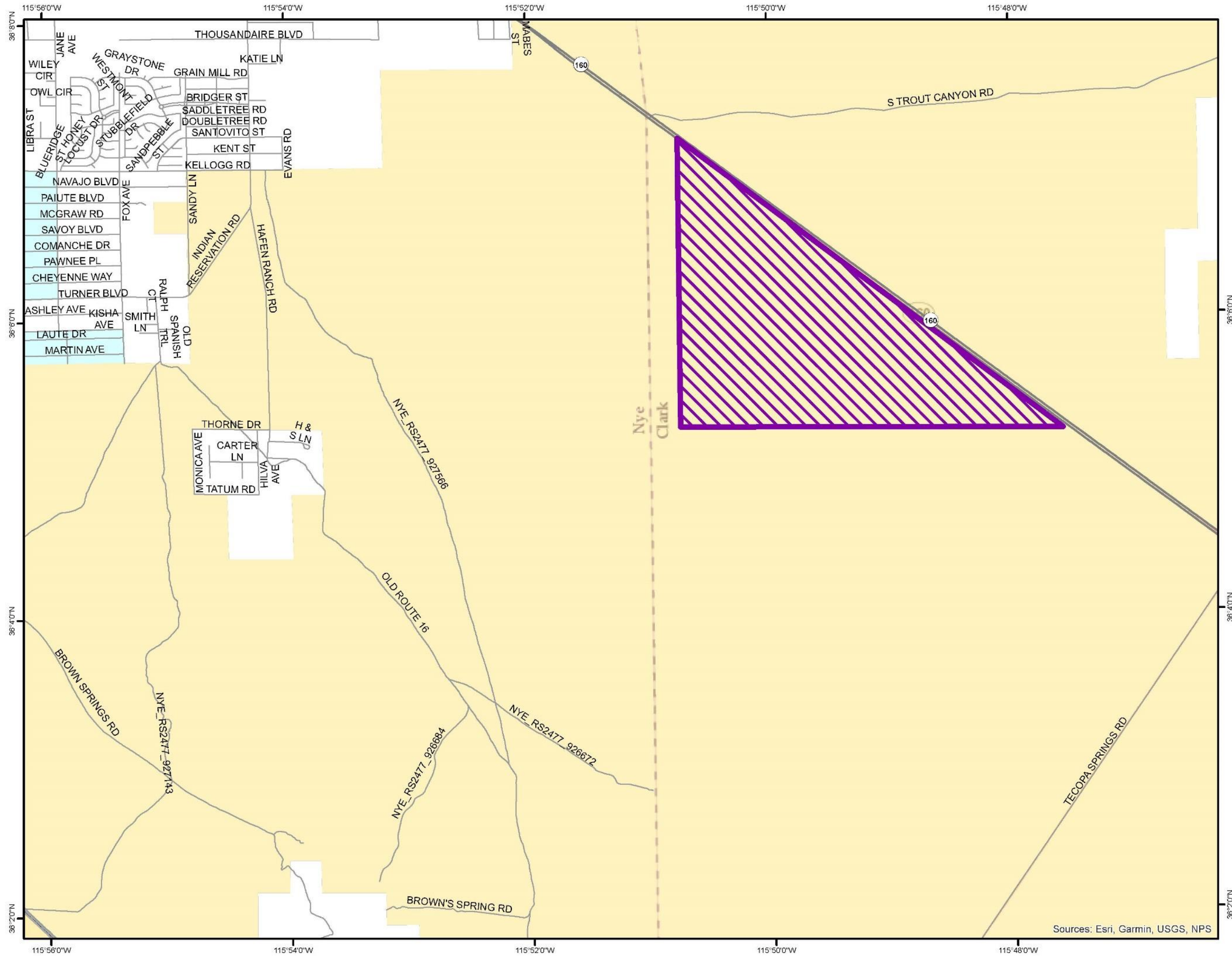
**Rough Hat Clark County  
Solar Project**

**Legend**

-  Rough Hat - Clark (proposed)
-  US Highways
-  State Highways
-  Bureau of Indian Affairs
-  Bureau of Land Management
-  Bureau of Reclamation
-  Department of Defense
-  Department of Energy
-  Fish and Wildlife Service
-  Forest Service
-  National Park Service
-  Nevada State
-  Local Government
-  Private



N  
 Lat Long Grid - UTM Zone 11, NAD 1983  
 Degrees Minutes Seconds  
 Prepared By: SNDO E&I Staff on 11/24/2021  
 No warranty is made by the BLM as to the accuracy, reliability, or completeness of these data for individual use or aggregate use with other data.



Sources: Esri, Garmin, USGS, NPS