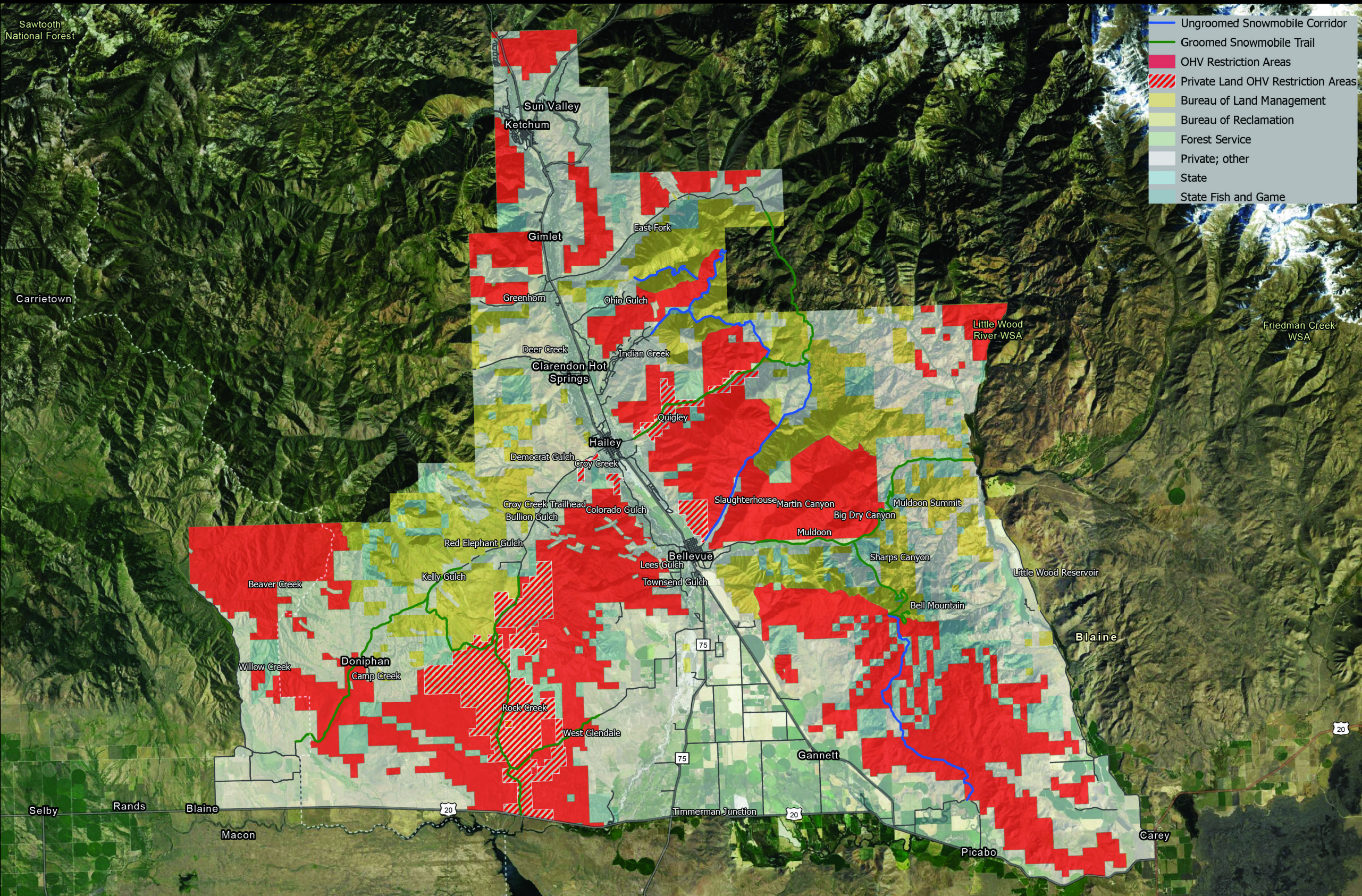




Wood River Valley OHV Restrictions, January 1 - April 30



Wildlife need your help to survive winter and early spring.

To protect elk and deer. No motorized vehicles allowed within restriction areas January 1st - April 30th, see map.



For more information contact the BLM Shoshone Field Office, 208-732-7200.

For information on snowmobile trail grooming contact Blaine County, 208-788-5516 or see the Blaine County Recreation District website.