

**Bureau of Land Management – Arizona
Resource Advisory Council Meeting Minutes
July 22, 2021**

Meeting hosted virtually over the Zoom platform

RAC Members:

Name	Residence	Interest Represented	Term Expires	Present
Bill Brake*	Sonoita	Grazing	9/2023	Y
Geoff Chain	Prescott	OHV	9/2023	Y
J.C. Sanders	Bouse	OHV/Developed Recreation	5/2023	Y
Krishna Parameswaran	Scottsdale	Energy/Minerals	9/2021	Y
Brian DeGanahl	Hillside	Grazing	5/2023	Y
Richard Lunt	Duncan	Local Area/Elected Official	5/2023	Y
R.J. Cardin	Cave Creek	Environmental	5/2023	Y
Sharma Torrens	Tempe	Archeology and Cultural Resources	9/2023	Y
Michael Dawson	Tucson	Environmental	09/2021	Y
Gary Watson	Kingman	Local Area/Elected Official	09/2021	N
Holly Jaleski	Flagstaff	Public-At-Large	09/2021	N
Michael Bogan	Tucson	Academia	9/2023	N
Clay Crowder	Phoenix	Governor’s Representative - Arizona Game and Fish Department	N/A	Y

BLM Staff:

Name	Title	Office	Present
Raymond Suazo	Arizona State Director	Arizona State Office	Y
Karen Kelleher	Arizona Associate State Director	Arizona State Office	Y
Art Goldberg	Deputy State Director, Business & Support Services	Arizona State Office	Y
Jerry Davis	Deputy State Director, Resources & Planning	Arizona State Office	Y
Elena Fink	Deputy State Director, Lands, Minerals & Energy	Arizona State Office	Y
Amber Cargile	Deputy State Director, Communications	Arizona State Office	Y
Lucas Lucero	Southwest Border Coordinator	Arizona State Office	Y
Michael Herder	District Manager	Arizona Strip District	Y
Angie Meece	Associate District Manager	Phoenix District	Y
William Mack	District Manager	Colorado River District	Y
Scott Feldhausen	District Manager	Gila District	Y
Dolores Garcia	Public Affairs Specialist	Arizona State Office	Y
Kelly Magdaleno	Recording Secretary	Arizona State Office	Y

**Bureau of Land Management – Arizona
Resource Advisory Council Meeting Minutes
July 22, 2021**

Public in Attendance: *See the attached sign-in sheet.*

- Richard Spotts: Retired, BLM, Arizona Strip District
- Terry Work: Former Board Member, California Off-Road Vehicle Association
- Taylor Rogers: Representative from Senator Kelly’s office
- Paul Roger David: County Supervisor Graham County
- JoAnna Mendoza: Representative from Representative O’Halloran’s office
- Shall Marshall: Member of the public (represents agricultural and sustainable energy consortium – didn’t name the company)
- Briannah Schwartz, Esq.: American Wild Horse Campaign

Meeting Minutes

Agenda Item: RAC Business Meeting Called to Order/Introductions

Presenter: Bill Brake, Resource Advisory Council (RAC) Chair

- Meeting called to order at 8:15 a.m. on Thursday July 22, 2021.
- Welcomed RAC members and others to the meeting and allowed time for RAC member and BLM Arizona staff introductions.

Agenda Item: State Director Welcome – DOI Priorities

Presenter: Ray Suazo, State Director, BLM Arizona

- Welcomed RAC members and members of the public.
- Presented an overview of current DOI Priorities.
- Hosted a short question and answer session.

RAC Member Comment: RAC Member Sharma Torrens inquired when the next RAC meeting was anticipated to be scheduled.

Arizona State Director Response: Discussed the number of variables involved with processing current RAC nominations and invited Amber Cargile to share her insights.

Deputy State Director, Communications Response: Relayed that a quorum would not be possible after September of 2021 due to RAC member term limits. Discussed the nomination process and the timeframes anticipated for appointment of future RAC members and shared the next RAC meeting may be scheduled in 2022.

Public Affairs Specialist, Arizona State Office Response: Relayed the importance of Member attendance at RAC meetings to ensure a quorum as not all Council positions are filled.

RAC Chair Comment: Reiterated the dedication involved in participating in the BLM Arizona RAC, and thanked members for making the time to attend.

**Bureau of Land Management – Arizona
Resource Advisory Council Meeting Minutes
July 22, 2021**

RAC Member Comment: RAC Member RJ Cardin inquired about the America the Beautiful Act and the 30 by 30 Land Conservation Plan. Requested more information on the planning process to identify lands for consideration.

Arizona State Director Response: The Bureau is still working together internally to identify the lands in which the Act and Plan applies and will take those decisions into consideration with conservation efforts as they look forward and plan for the future. Assured the members that as guidance and processes are established the RAC will be kept informed.

-- Break --

Agenda Item: Lands, Minerals and Energy Update (See Lands, Minerals and Energy Slides attached)

Presenter: Elena Fink, Deputy State Director, Lands, Minerals and Energy / Mark Morberg, Supervisory Land Surveyor

- Welcomed RAC members and hosted an update on the BLM Arizona's Renewable Energy Program.

RAC Member Comment: RAC Member Sharma Torrens referenced the Land Use Plan and how it is used to determine which areas are suitable for renewable energy while also minimizing natural and cultural resource conflicts and asked for more information on how those decisions are made.

Deputy State Director, Lands, Minerals and Energy Response: Briefly explained the broad scale process to identify areas of consideration and ensure cultural and natural resources as well as preexisting infrastructure such as transmission lines are accounted for, and decisions are made after a thorough planning process.

Arizona State Director Response: Referenced a 2013 Restoration Design Energy Project and shared some of the planning process involved and the information available for reference on these types of projects, where water, cultural, and other impacts were analyzed thoroughly which enabled projects to move forward successfully.

RAC Member Comment: RAC Member Mike Dawson referenced the majority of applications were currently located in Variance Areas and inquired if a NEPA process would be required for use, consistent with the Resource Management Plans, and who would bear the cost of the NEPA review.

Deputy State Director, Lands, Minerals and Energy Response: Confirmed the applicant is responsible for the additional review costs incurred and if the application comes in for a Variance Area, that processing time will end up taking longer because there is much more detailed analysis required to minimize impacts.

RAC Chair Comment: Inquired what would happen if one of these companies went bankrupt or defaulted and if there were protections in place to clean up abandoned lands.

Deputy State Director, Lands, Minerals and Energy Response: Confirmed BLM has issued policy guidance on bonding for rights-of-ways to address these concerns.

-- Break --

**Bureau of Land Management – Arizona
Resource Advisory Council Meeting Minutes
July 22, 2021**

Agenda Topic: Natural Resources and Conservation Update (See Natural Resources and Conservation Slides attached)

Presenter: Jerry Davis, Deputy State Director, Resources and Planning / Phil Cooley, Branch Chief, Renewable Resources and Planning

- Welcomed RAC members and presented a brief update on current projects from the Resources and Planning Division.

RAC Chair Comment: Commented on the changes in how BLM will manage lands and grazing and inquired how the policy would be rolled out to the grazing and livestock industries. Encouraged working with livestock, grazing, and farming industry leaders to discuss policy changes and processes.

Deputy State Director, Resources and Planning Response: Confirmed BLM Arizona's commitment to engagement with various stakeholders.

Arizona State Director Response: Reiterated BLM Arizona's commitment to stakeholders and informed members our outreach to industry leaders has looked different during the pandemic, but the intention behind the dialogue has not changed.

RAC Chair Comment: Commented on the responsibility of land users and land managers to collaborate and work together.

Deputy State Director, Resources and Planning Response: Discussed the ways the BLM is moving away from contracts for monitoring and moving those programs and processes in-house in an effort to increase those collaborative relationships.

RAC Member Comment: RAC Member RJ Cardin inquired how BLM Arizona works with other agencies to evaluate lands when landscapes are impacted by neighboring owners for example DOD or NPS lands.

Branch Chief, Renewable Resources and Planning Response: BLM Arizona has limited authority but does make an effort to consider the impacts affecting multiple allotments and allow for individual issues to be pinpointed.

Arizona State Director Response: There are opportunities to work with other local, state, and federal resources to identify issues and work together. BLM AZ has shared resources for projects with NRCS as well as U.S. Forest Service and the Arizona Game and Fish Department in the past.

-- Break --

Agenda Topic: Recreation, Maintenance and Infrastructure Update (See Recreation, Maintenance and Infrastructure Slides attached)

Presenter: Art Goldberg, Deputy State Director, Business and Support Services / Jerry Davis, Deputy State Director, Resources and Planning / Amanda Moore, Recreation Program Lead / Tammy Pike, Outdoor Recreation Planner

Bureau of Land Management – Arizona
Resource Advisory Council Meeting Minutes
July 22, 2021

- Presented a brief summary to members regarding current BLM Arizona Recreation and Maintenance projects and programs including an update on Infrastructure.

RAC Member Comment: RAC member Mike Dawson inquired about long range planning accounting for an increased use of electric vehicles in America and if BLM Arizona had started to consider installing charging stations as part of traffic management plans or future infrastructure planning. Noted electric infrastructure is being incorporated in areas like Zion National Park and Yellowstone to accommodate increased visitation.

Deputy State Director, Business and Support Services Response: Confirmed the Department is taking electric infrastructure for vehicles into consideration, for government facilities there are plans in the next five years to equip charging stations, but no specific information has been released as it relates to recreation.

Deputy State Director, Resources and Planning Response: Discussed the strategic planning for the Recreation program and assured members that BLM Arizona will look at the ways public land users are recreating in Arizona and the planning will involve looking at what types of amenities are needed on BLM managed public lands and soliciting public comments as well.

RAC Member Comment: RAC member Mike Dawson inquired about longer range business planning, specifically is a Cost of Service Analysis conducted when sites are being vetted?

Recreation Program Lead Response: Confirmed BLM Arizona performs two different types of analysis, the first is a Cost Recovery Level Analysis that takes totals of all operating costs, past present and future, and shows what would be needed to recover the cost of those expenses. The second is a Fair Market Value Analysis, which is where the level of amenities and services provided are input on a comparison scale with the private, federal, and non-federal recreation management agencies and prices are established in the middle of that spectrum so as not to over or under charge the public.

RAC Member Comment: RAC Member Clay Crowder asked for an update regarding the Dingell Act as it relates to recreation and the scope of how BLM intends to look at some of those things in relation the other factors that were identified including stakeholder outreach.

Outdoor Recreation Planner Response: BLM Arizona has already enacted the Dingell Act into our Recreation Program, a contractor has been hired to review our records and ensure they are up to date as far as cataloging access points and care is being taken gather data which will be funneled into Travel Management Plans and used to show where access can be improved. There are methods in place to get the property needed, or right-of-way to secure access to those properties and it is an active part of the Recreation Program right now.

Agenda Topic: District Updates/Question and Answer

Presenter: BLM Arizona District Managers

- Updated members on the BLM Arizona's recent accomplishments regarding the following:
 - Integrated Vegetation Management (IVM)
 - Increased Visitor Use at Coyote Buttes North (The Wave)
 - Black Mountain Herd Management Area (HMA) Wild Burro Gather Environmental Assessment (EA)
 - Truxton Habitat Enhancement Project

**Bureau of Land Management – Arizona
Resource Advisory Council Meeting Minutes
July 22, 2021**

- Fisheries Program (Partner’s Point Renovation Project)
- SARA Park Realty Recreation and Public Purpose (R&PP)
- San Pedro Riparian National Conservation Area (SPRNCA) Resource Management Plan/Environmental Impact Statement (RMP/EIS)
- Holbrook Oil and Gas Interest
- Cross-F Land Acquisition
- Fort Huachuca Sentinel Landscape
- Recreational Shooting Sports Project
- Miller Road Cleanup
- Table Mesa Area Recreation Planning
- Apache Junction Rodeo Grounds Land Sale

RAC Member Comment: RAC Member Sharma Torrens inquired with Mike Herder about juniper removal and how it enhances the habitat for wildlife. Sharma also inquired as to the meaning of the lop and scatter method of IVM.

Arizona Strip District Manager Response: Advised the landscape in the district includes a lot of country that is populated by pinyon and juniper habitats. When they get older and more established, the canopy cover can get so dense that it restricts the growth of other species of plants underneath, and the grass and shrub components are important to sustain many species of wildlife. In collaboration with Arizona Game and Fish Department the pinyon and juniper canopy is removed to allow space for other wildlife, particularly mule deer and grouse species. Informed that lop and scatter is a technique where get scattered to provide underbrush habitat for small mammals, which in turn provides foraging space for raptors and promotes a healthy balance of wildlife.

RAC Member Comment: RAC Member Mike Dawson inquired about the increase of permits to 64 a day for The Wave, and the impact that resource was experiencing.

Arizona Strip District Manager Response: Advised RAC Members that Human Impact Studies were ongoing and being refined since 1995 and that data is used to understand changes and impacts to the site. After the permit increase was announced, the data was measured and monitored again as a baseline and future changes will be accounted for. A Limits of Acceptable Change Strategy is being developed to help identify which changes are considered significant enough to cause adaptations to the management of that resource.

RAC Chair Comment: Complimented the work that BLM Arizona Fire and Aviation Division have accomplished during an increasingly long fire season and the resources saved due to their efforts.

RAC Member Comment: RAC Member Richard Lunt expressed his thanks to the work that goes into preparing these summaries and appreciated receiving the materials for review ahead of the meeting.

Agenda Topic: Public Comment Period (3:00 p.m. – 3:30 p.m.)

This comment period will provide the public an opportunity to provide input to the RAC (on any BLM-relevant topic) for the meeting record.

Presenter: Bill Brake, Resource Advisory Council (RAC) Chair

- Welcomed members of the public to address the RAC.

There were no members of the public who wished to speak to provide comment during this period.

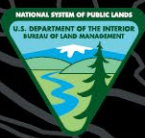
**Bureau of Land Management – Arizona
Resource Advisory Council Meeting Minutes
July 22, 2021**

Wrap-up:

RAC Chair Comment: Bill Brake thanked RAC members and BLM staff and encouraged review of the reports and slides included as well as reaching out to BLM Arizona staff with questions. Thanked members for their commitment to attendance and their patience as we work through the nomination process for new members.

Arizona State Director Comment: Thanked RAC Members for taking the time to attend, and their dialogue and preparation for today's meeting. Shared his hopes to begin in-person meetings on a more consistent frequency as the nominations are approved and Council positions are filled in the near future. Member and stakeholder engagement is a large part of our considerations in policy and process development, and BLM Arizona is grateful for the RAC Members thoughtful contributions to the management of public lands. Thanked the workforce of BLM Arizona for their adaptability and resilience in dealing with the pandemic, our extended fire seasons, and administration changes that have occurred in the last year.

Meeting Adjourned at 3:35 p.m.



U.S. Department of the Interior
Bureau of Land Management



Natural Resources & Conservation

Conservation Stewardship & Working Landscapes for Arizona & America





AZ Wild Horse and Burro Strategy





AZ Wild Horse and Burro Strategy

- The BLM Arizona manages 11 HAs and 6 HMAs, covering over four million acres total
- Of the 11 HA's managed by the BLM Arizona, 6 are closely related to the HMAs and overlap considerably.

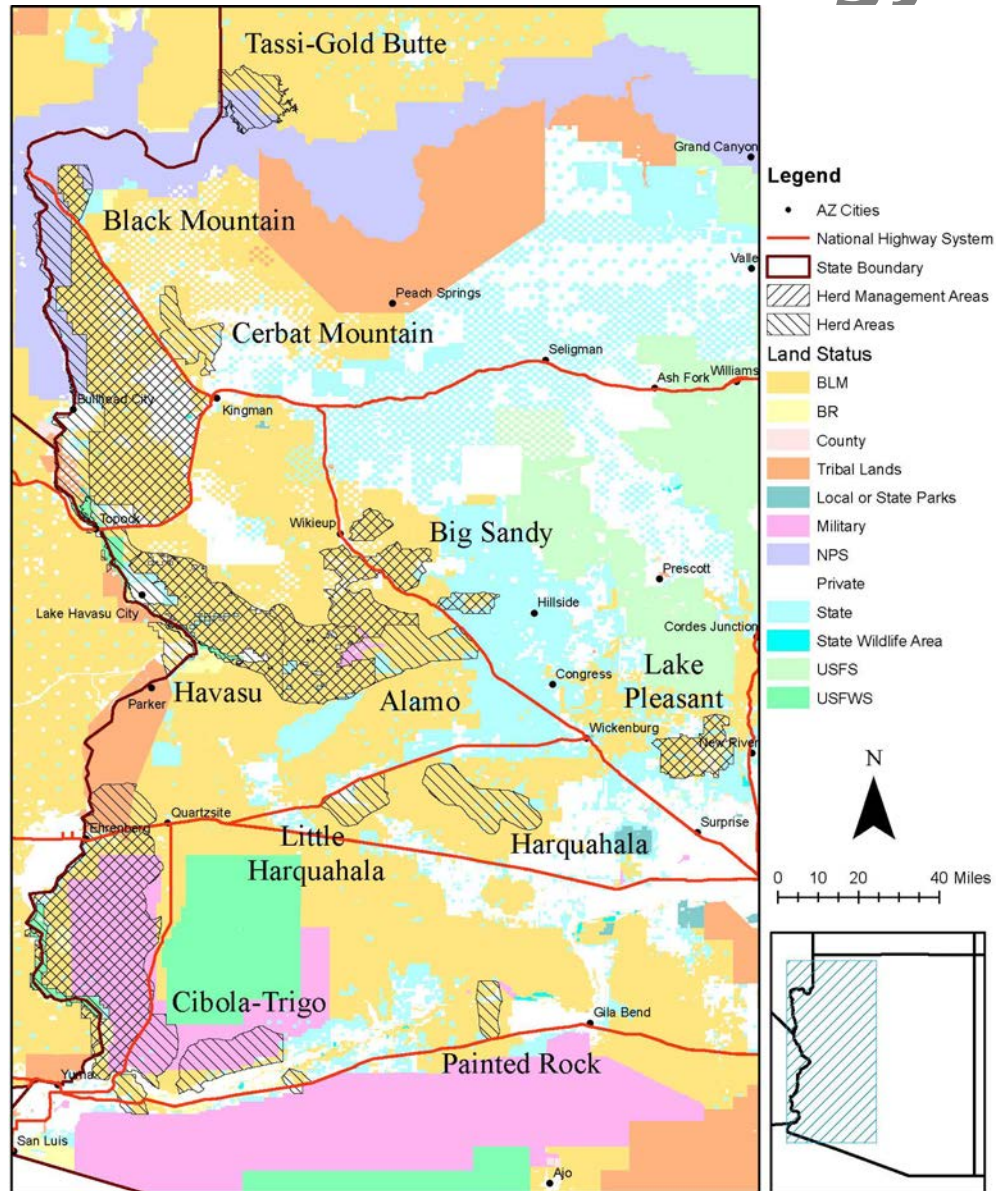


AZ Wild Horse and Burro Strategy

- BLM identified herd areas (HAs) as places used by wild horses and burros at the time the Act was passed.
- Herd Management Areas (HMAs) are HA(s) determined to provide adequate food, water, cover, and space to sustain healthy and diverse WHB populations over the long-term.
- The BLM does its work under the Act using HMAs as the main geographic unit.

AZ Wild Horse and Burro Strategy

- HA/HMA in 3 out of 4 Districts
- Most of the WHB are concentrated along the Colorado River
- The Black Mountain HMA has the largest population of wild burros of any HMA in the BLM





AZ Wild Horse and Burro Strategy

- The total Appropriate Management Level (AML) for all HMAs is approximately 1,100 wild burros and 200 wild horses.
- Population inventories estimate the current population in Arizona at 8,000 wild burros and 450 wild horses (see next slide).
- WHB populations typically grow 15-20% annually, meaning that populations double approximately every 4 years.



AZ Wild Horse and Burro Strategy

HMA(s) and HA(s)	Size (acres)	Burro Pop. (est.)	Horse Pop. (est.)	AML
Alamo HMA/HA	341,055	1,221	N/A	200
Big Sandy HMA/HA	243,889	1,992	N/A	100
Black Mountain HMA/HA	1,096,307	2,012	N/A	478
Cibola – Trigo HMA/HA	1,034,422	329	354	165 burros 112 horses
Havasu HMA/HA	409,901	133	N/A	170
Lake Pleasant HMA/HA	103,473	756	N/A	TBD
Cerbat Mountain HA	83,006	N/A	176	50 horses
Harquahala HA	126,256	165	N/A	0
Little Harquahala Mountains HA	65,893	8	N/A	0
Painted Rocks HA	38,737	N/A	20	0
Tassi – Gold Butte HA	103,437	62	N/A	0
Outside HMAs		891	N/A	0
Arizona WHB Population Estimate Total		8,046	550	1,275



AZ Wild Horse and Burro Strategy Gather Stats

Year	Horses	Burros	Total
2016	26	119	145
2017	0	401	401
2018	0	806	806
2019	47	873	920
2020	36	888	924
2021	0	458	458

*As of July 13, 2021



AZ Wild Horse and Burro Strategy Adoption Stats

Fiscal Year	Horses	Burros	Total
2016	170	50	220
2017	192	48	240
2018	255	206	461
2019	306	394	700
2020	209	427	636
2021*	128	547	675

*As of July 13, 2021



AZ Wild Horse and Burro Strategy

- Challenges
 - Program staffing has decreased in the last 15 years
 - Some of AZ's AML determinations may not reflect current resource conditions
 - AMLs were established as a fixed number, which do not provide management the flexibility needed to address population growth
 - Limited in house holding and gather capacity at Florence



AZ Wild Horse and Burro Strategy

- Recommendations
 - Additional Staffing: one position in Phoenix and one position in Colorado River District
 - Establish AML ranges for all areas to be managed
 - Complete NEPA for 10 year gather plans
 - Achieve AML through contract gathers
 - Implement fertility control program in all HMAs after AML is reached
 - Then maintain AML within the established ranges through periodic in house gathers



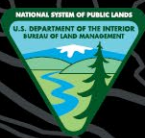
AZ Wild Horse and Burro Strategy

Fiscal Year	HMA	Population Surveys	NEPA Analysis	Gather Date
2021-2022	Black Mountain	October 2021	Completed August 2020	Phase 1 complete Phase 2 - March 2021
2021-2022	Cerbat HA	Completed -February 2021	TBD	TBD
2021-2023	Big Sandy, Alamo, Havasu	Q4 FY21 \$180,000	Q1 FY22 - \$225,000 in house; Three Rivers Complex	Q1/Q2 FY23 (est. 5,000 head)
2022-2024	Lake Pleasant	Q3 FY22 \$75,000	Q1 FY23 - \$100,000 in house	Q1/Q2 FY24 (est. 1,000 head)
2023-2025	Cibola	Q3 FY23 \$75,000	Q1 FY24 - \$100,000 in house	Q4 FY24/Q1 FY25 (est. 700 head)



AZ Wild Horse and Burro Strategy

- Summary
 - The implementation of this strategy will align the WHB program workload with the current and future program needs in Arizona.
 - The recommendations are a means of identifying the “state of health” of the WHB program and opportunities for building a strategy that achieves an appropriate thriving natural ecological balance through increased efficiencies by leveraging all available resources and technology.



U.S. Department of the Interior
Bureau of Land Management



Recreation, Maintenance, & Infrastructure

Conservation Stewardship & Working Landscapes for Arizona & America





AZ 955 Engineering Branch

- Great American Outdoors Act (GAOA) Funded Projects
 - FY21 GAOA Projects Funded
 - FY22 GAOA Projects Selected
- Recreational Sports Shooting Projects
 - Baldy Mountain
 - Church Camp Road
 - Saddleback Mountain
 - Box Canyon
- Deferred Maintenance Program Project
 - Virgin River Campground Septic System Replacement

Great American Outdoors Act – FY21

Funded Projects:

- Partners Point Boat Dock and Ramp
- Partners Point Admin Building and Pole Barns
- Burro Creek Water System and Dump Station
- Haekel Road Reconstruction



Partners Point Boat Dock and Ramp

Field Office/site name: Lake Havasu Field Office/Partners Point Work Yard Site

Activity type: Building and Structures

Size: The existing wood dock is 3 feet wide by 115 feet long with an adjacent 25 feet wide geo-webbing ramp servicing a 619,400 acre lake.



Existing ramp and dock.

Purpose: This ramp and dock provides the only lake access for maintenance staff's boats and equipment to maintain 70 boat-in campsites and for activities related to the Lake Havasu's Fisheries Improvement Program.

Partners Point Boat Dock and Ramp

Recreational opportunities: This site serves to maintain recreation sites, enhance public fishing opportunities, including national bass tournaments, and contributes to the local economy, while helping improve habitat conditions for native fish and aquatic life. The lake is a very popular fishing and boating destination for Arizona and California residents.



Annual visitation: 15,000 annual visitors

Total cost estimate: FY2021 GAOA Funding request of \$1,200,000.00 was based on a class B estimate provided by an engineering consulting firm.

Current status of the proposed project: Design for this project has been completed. Construction packet has been submitted to Headquarters in Denver for solicitation.



Partners Point Admin Building and Pole Barns

Field Office/site name: Lake Havasu Field Office/Partners Point Work Yard Site

Activity type: Building and Structures

Size: Steel pole barns (65'w x 36'l x 16' h), (85'w x 35'l x 16'h), (45'w x 40'l x 16'h); Work Yard 3 acres; Admin Building 1,800 square feet



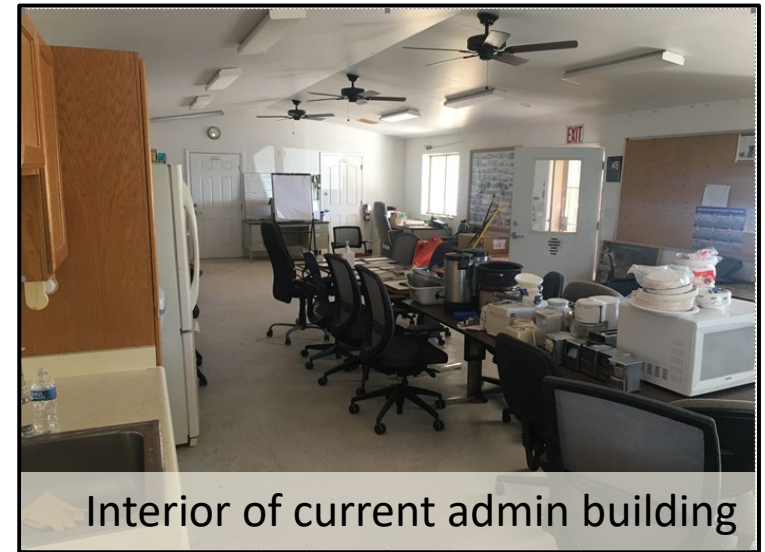
Damaged pole barn roof.

Purpose: The work yard facilities are used to service the maintenance staff's boats and equipment. Without the pole barns the staff could not maintain and store the boats for maintenance of the 70 boat-in campsites around the 619,400-acre lake.

Partners Point Admin Building and Pole Barns

Total cost estimate: FY2021 GAOA Funding request of \$2,250,000.00 is based on a class b estimate provided by the engineering consulting firm.

Current status of the proposed project: Design for this project has been completed. Construction packet has been submitted to Headquarters in Denver for solicitation.



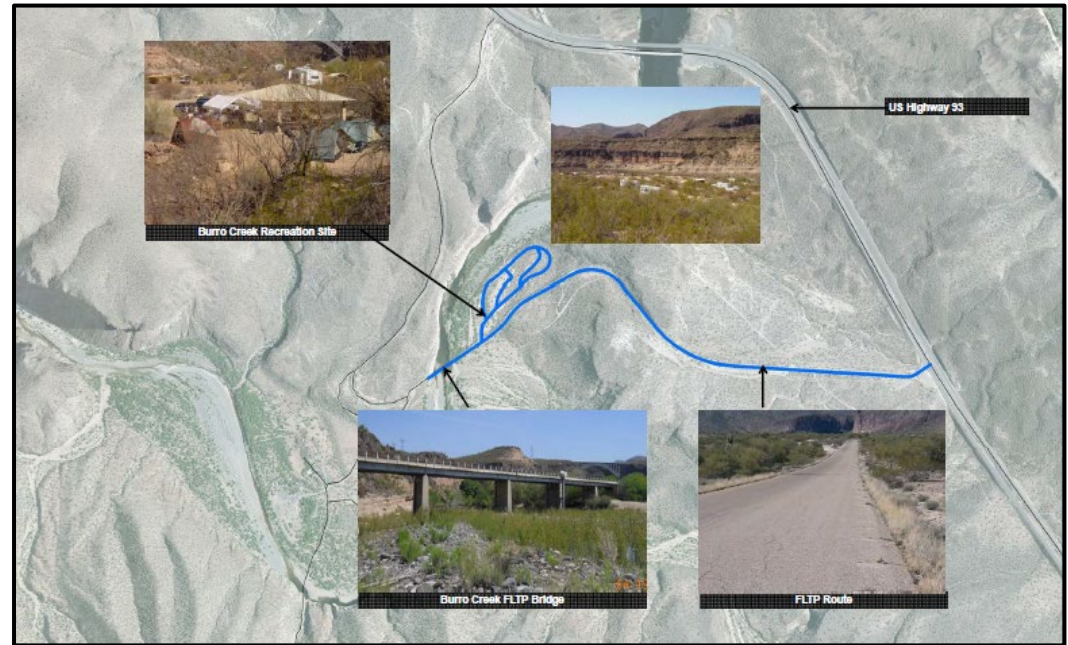
Project Vision: Reconstruction will result in a safer environment for equipment and staff. The improved work shops will increase efficiency of maintenance staff to perform boat and equipment maintenance which will allow them to promptly get back on the lake to maintain the boat-in recreation facilities.

Burro Creek Water System and Dump Station

Field Office/site name: Kingman
Field Office/Burro Creek Recreation
Site

Activity type: Water & Utilities

Size: 24 acres.



Purpose: This site provides diverse year-round recreational opportunities including camping, picnicking, hunting, fishing, and trailhead access for ATV use and back country trips.

Burro Creek Water System and Dump Station

Recreational opportunities at Field Office/site:

The site has one group and 27 individual campsites. Burro Creek can accommodate large recreational vehicles and tent campers. Most sites are equipped with a fire grill, trash can, picnic table, sun-shelter ramada, and parking space. The site also provides potable water, restrooms with flush toilets and sinks, RV dump station, and group camping area for tents and recreational vehicles.



Existing RV Dump Station

Annual visitation: 19,742 individual visitors with a total of 664,157 visitor-days in 2019.

Total cost estimate: FY2021 GAOA Funding request of \$590,000 is based on a Class C estimate provided by BLM State Office Engineering Branch.

Current status of the proposed project: Design for this project has been completed. Working with Arizona Department of Environmental Quality on final stages of permitting process.



Haekel Road Reconstruction

Field Office/site name: Safford Field Office/Road System

Activity type: Transportation

Size: Haekel Road is 32 miles long and 20 feet wide.

Purpose: Haekel Road is primarily used for access to ranches and recreational uses related to the Hot Well Dunes Recreation Area. The road is used by emergency and law enforcement vehicles for access from Safford to southern communities.



Road is in a failed condition.

Haekel Road Reconstruction

Recreational opportunities at Field Office/site: Serves as the only access to the one of Safford's busiest and most notable recreation sites, the Hot Wells Dunes Off Highway Vehicles Recreation Area which also provides hunting, camping, wildlife viewing, and other dispersed recreational opportunities on approximately 2,000 acres.



Annual visitation: the road has a traffic volume of 149 vehicles per day

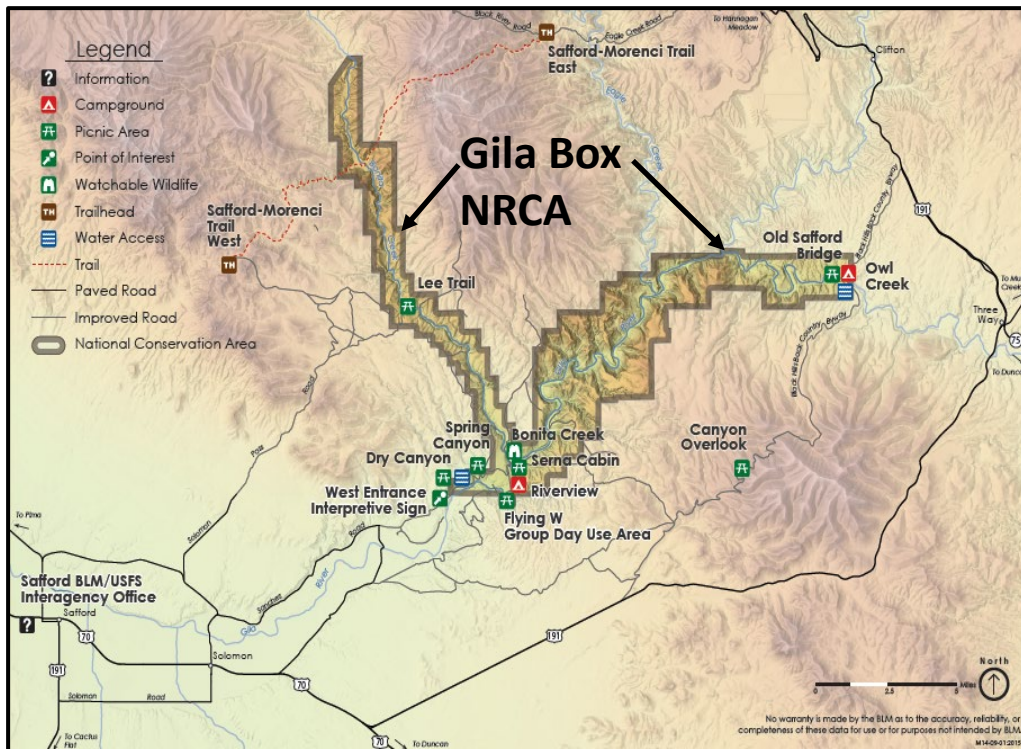
Total cost estimate: \$1,000,000

Current status of the proposed project: Design, NEPA, and permitting is complete. Project is being advertised.

Great American Outdoors Act – FY22

Selected Projects

- La Posa LTVA Wastewater Lagoons and Site Road Repairs
- Gila Box Recreation Sites and Access Roadway Reconstruction and Repairs



The Gila River meanders through the Gila Box NRCA



La Posa LTVA Wastewater Lagoons and Site Road Repairs

Field Office/site name: Yuma Field Office / La Posa Long Term Visitor Areas, North, South, West

Activity type: Water & Utilities

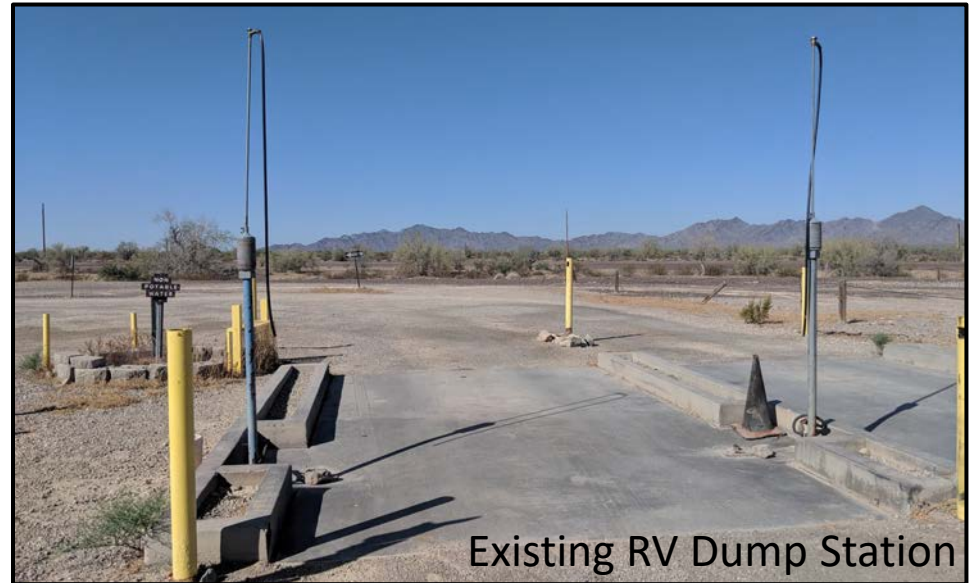
Size: The La Posa LTVA is approximately 11,400 acres.



Purpose: The La Posa Long-Term Visitor Area (LTVA) is a major recreation destination for visitors who spend their winters here each year and is one of the largest camping and recreation sites in the BLM. Local records show this site as being one of the more heavily used recreational sites in the region.

La Posa LTVA Wastewater Lagoons and Site Road Repairs

Recreational Opportunities: The Area was established to address the growing demand for, and management of, wintertime RV camping opportunities in the Southwest. The site also provides mountain biking and hiking opportunities. A large annual RV Show and Gem and Mineral show that occurs each January is claimed to be “the largest gathering of RVs and RVerS on Earth!”



Annual visitation: 22,195 visits per year and 923,301 visitor days per year.

Total cost estimate: Projected FY22 GAOA - \$5,740,000

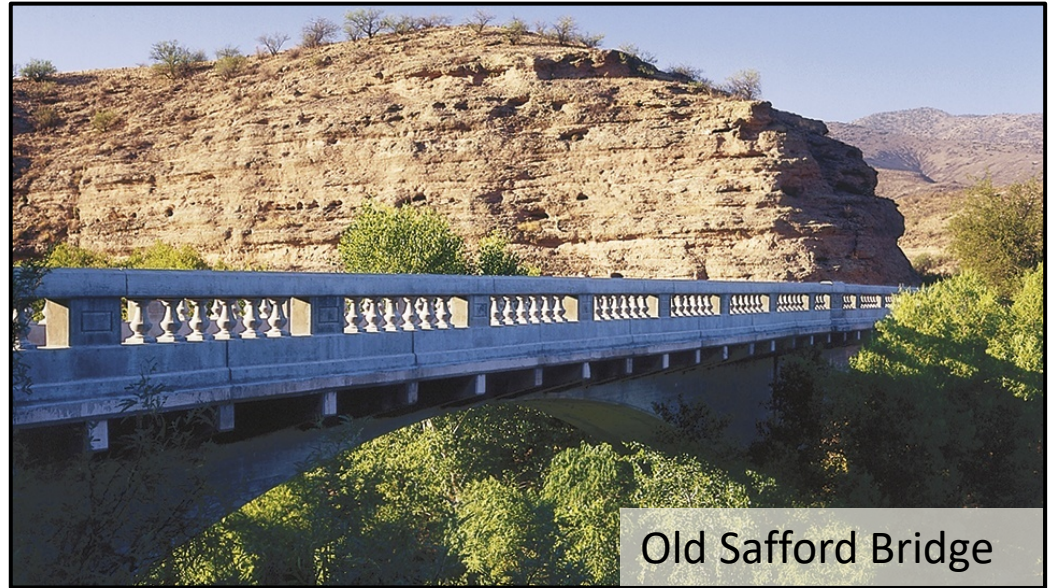
Current status of the proposed project: NEPA process has been completed. ADEQ permit is being processed at this time. Design is being finalized.

Gila Box Recreation Sites and Access Roadway Reconstruction and Repairs

Field Office/site name: : Safford
Field Office / Gila Box Riparian
National Conservation Area
(RNCA)

Activity type: Recreational Assets

Size: 23,000 acres



Purpose: The Gila Box Riparian National Conservation Area (RNCA) was established in order to conserve, protect, and enhance its riparian areas and associated resources, and the aquatic, wildlife, archaeological, paleontological, scientific, cultural, recreational, educational, scenic, and other resources and values of such areas.

Gila Box Recreation Sites and Access Roadway Reconstruction and Repairs

Recreational Opportunities: Rafting, canoeing, kayaking, picnicking, birdwatching, scenic drives, fishing, wildlife viewing, hiking, sightseeing, historic interpretation, camping, horseback riding, photography, swimming, wildflower viewing, four-wheel driving, and hunting.

Annual visitation: 22,000



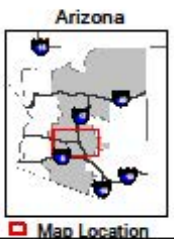
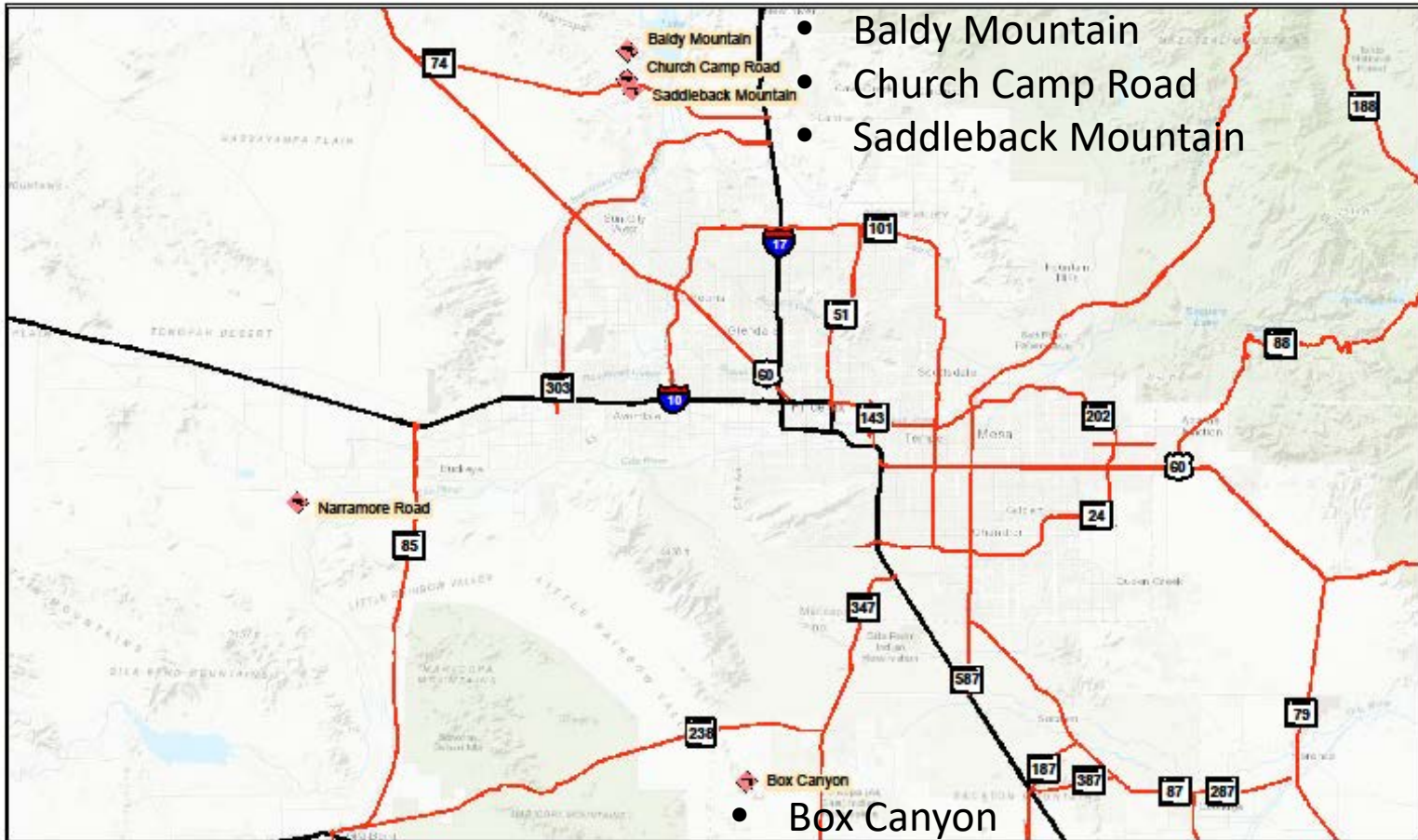
Old Lady Gay Historic Cabin

Total cost estimate: Projected FY22 GAOA - \$6,100,000

Current status of the proposed project: NEPA has been completed. Design will be initiated in FY22 / 1st Quarter and expected construction completion date is FY23 / 3rd Quarter.



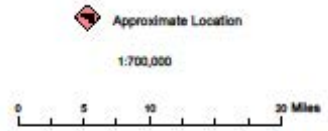
Recreational Shooting Sports Projects Locations



Regional Map Recreational Shooting Sports Project

UNITED STATES DEPARTMENT OF THE INTERIOR
BUREAU OF LAND MANAGEMENT
PHOENIX DISTRICT OFFICE

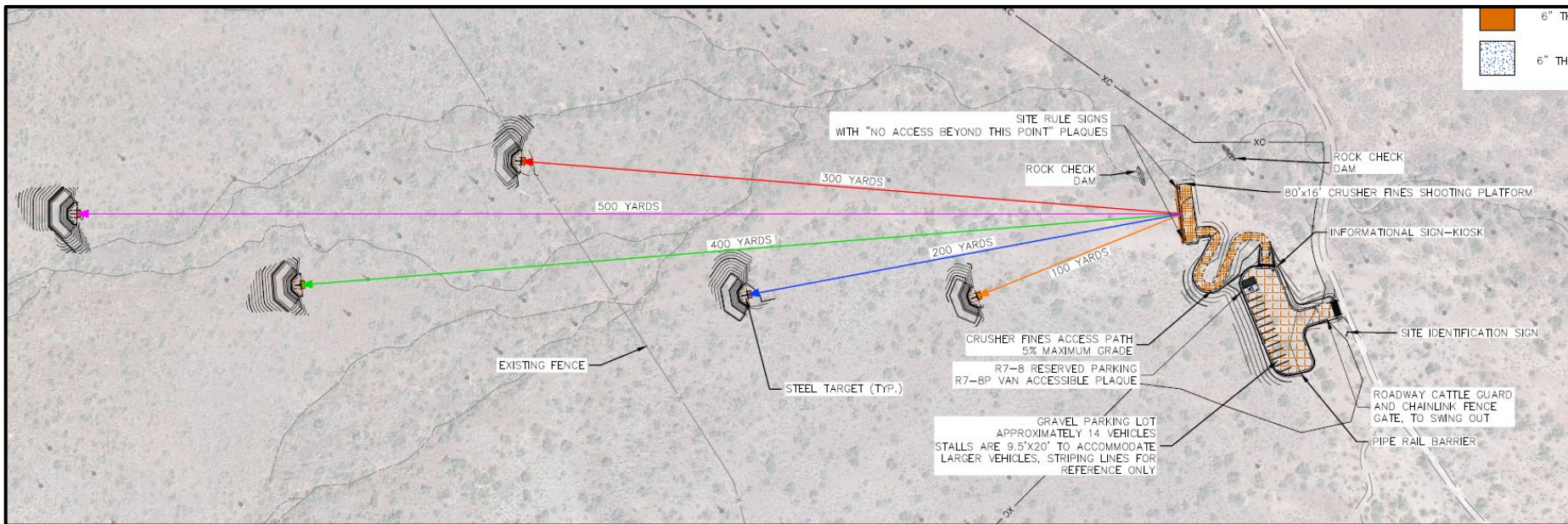
Date: 7/31/2019



No warranty is made by the Bureau of Land Management as to the accuracy, reliability, or completeness of these data for individual use or aggregate use with other data. Decisions in this document only apply to BLM lands.

Recreational Shooting Sports Projects

Baldy Mountain Recreational Shooting Site



- 5 Target Platforms
 - 100 yard
 - 200 yard
 - 300 yard
 - 400 yard
 - 500 yard

- 1 Shooting Platform
- 1 Vehicle Parking Area

Recreational Shooting Sports Projects

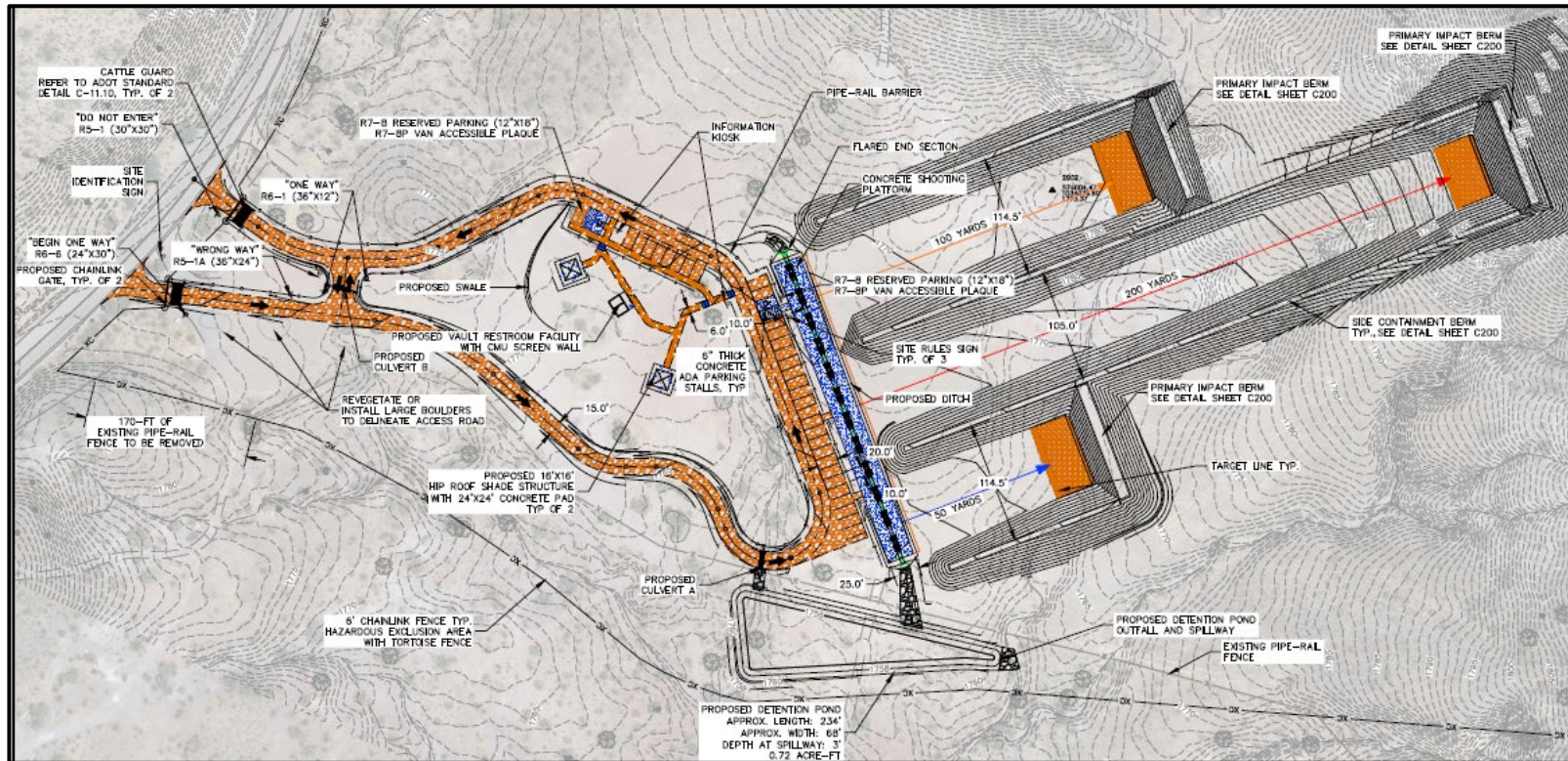
Baldy Mountain Recreational Shooting Site

- Construction completed: December 2020.



Recreational Shooting Sports Projects

Church Camp Road Recreational Shooting Site



- 3 Target Lanes
 - 50 yard
 - 100 yard
 - 200 yard
- 1 Shooting Platform
- 2 Parking Areas
- 2 Ramadas
- 1 Double Vault Toilet

Recreational Shooting Sports Projects

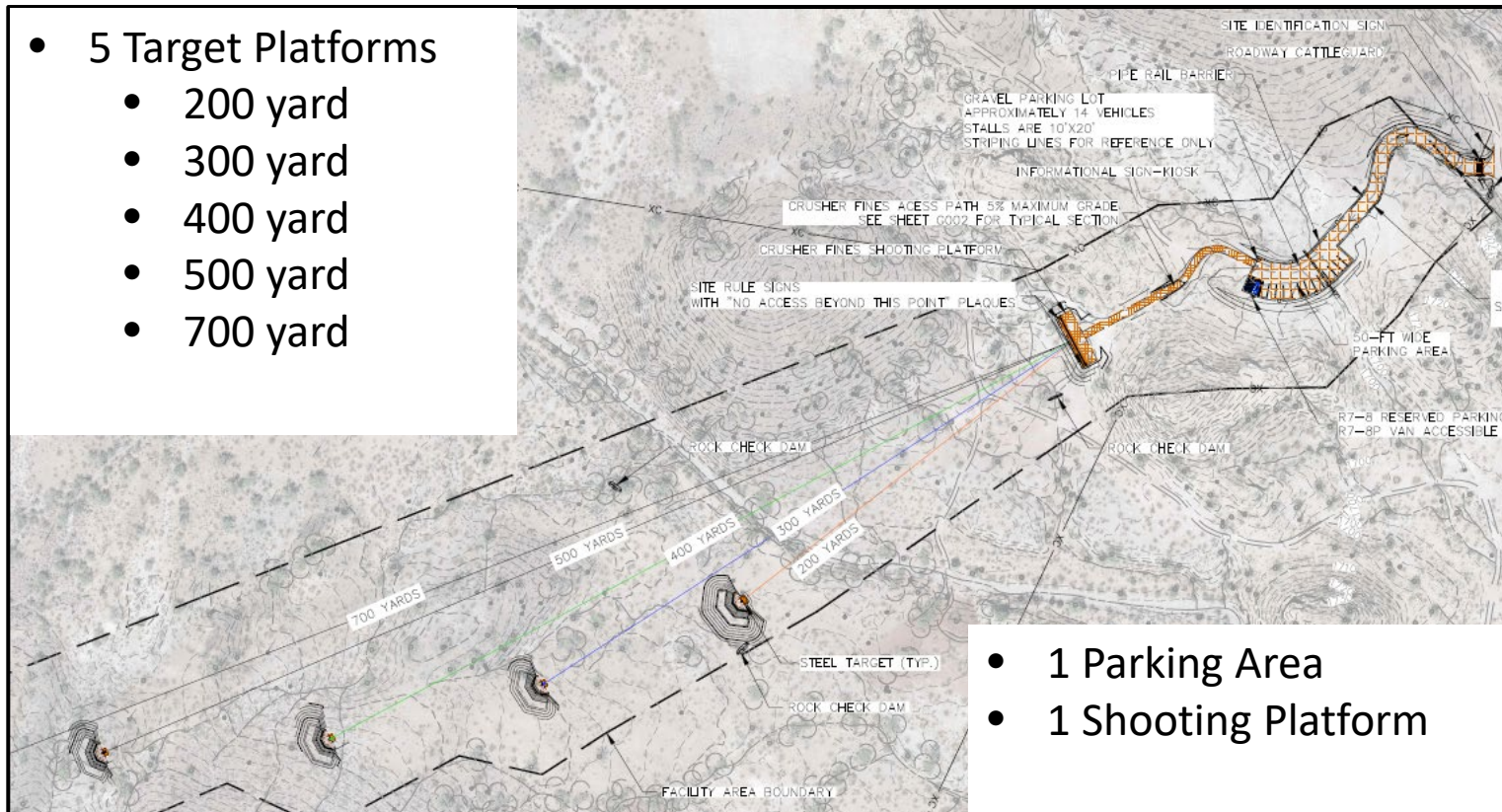
Church Camp Road Recreational Shooting Site

- Expected Construction Completion Date:
August 2021



Recreational Shooting Sports Projects

Saddleback Mountain Recreational Shooting Site



Recreational Shooting Sports Projects

Saddleback Mountain Recreational Shooting Site

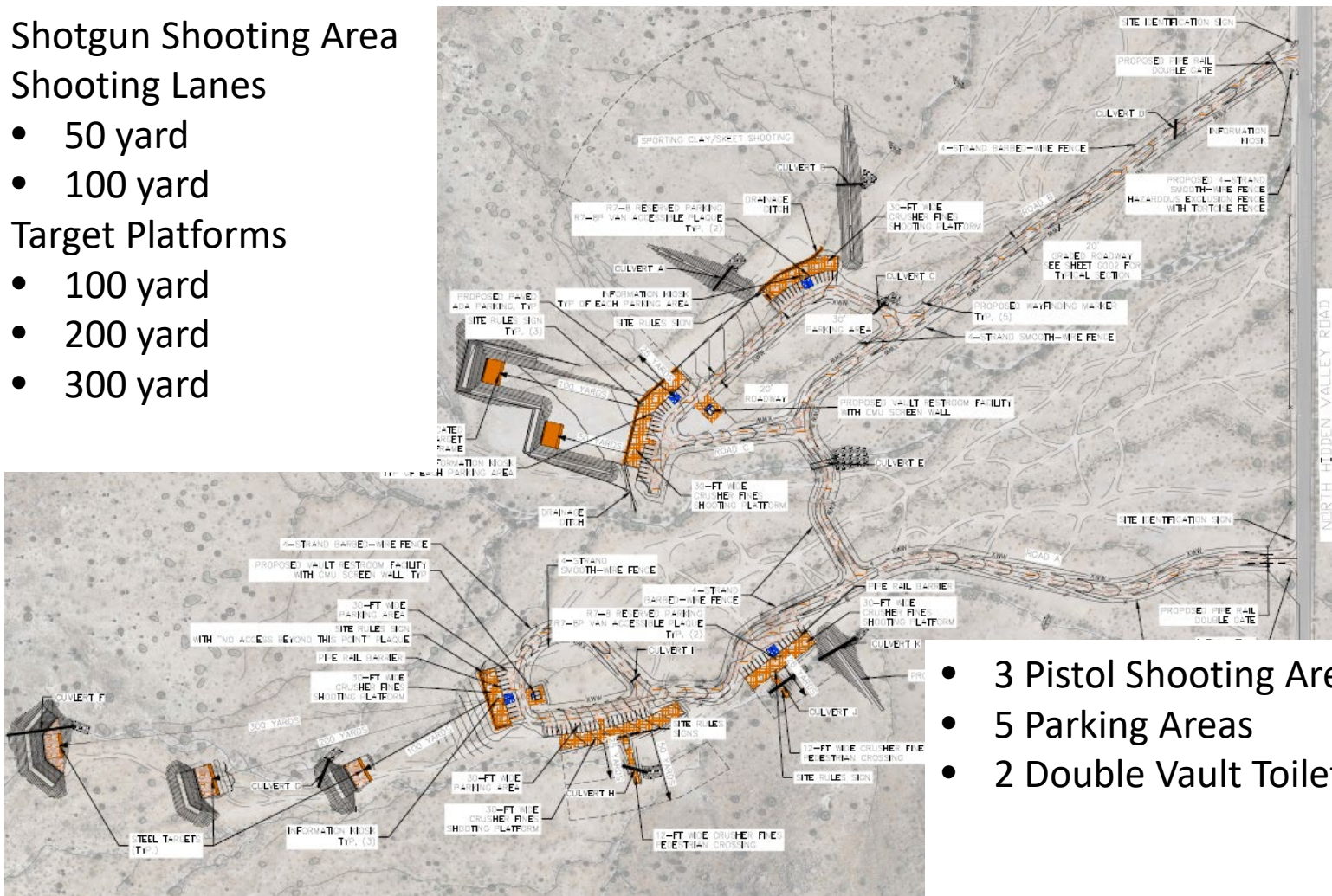
- Expected Construction Completion Date:
August 2021



Recreational Shooting Sports Projects

Box Canyon Recreational Shooting Site

- 1 Shotgun Shooting Area
- 2 Shooting Lanes
 - 50 yard
 - 100 yard
- 3 Target Platforms
 - 100 yard
 - 200 yard
 - 300 yard



- 3 Pistol Shooting Areas
- 5 Parking Areas
- 2 Double Vault Toilets

Recreational Shooting Sports Projects

Box Canyon Road Recreational Shooting Site

- Expected Construction Completion Date:
October 2021



Deferred Maintenance Program Project Virgin River Septic System Replacement

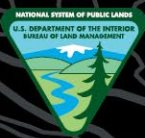


Site: Arizona Strip Field Office / Virgin River Campground

Activity type: Building and Structures

Scope: Replace three septic tanks and leach lines.

Current Status: Design in beginning stages.



U.S. Department of the Interior
Bureau of Land Management



Federal Lands Recreation Enhancement Act and Recreation Business Planning



Federal Lands Recreation Enhancement Act (FLREA)

- Provides authority to establish, modify, charge, collect, and retain recreation fees at federal recreational lands
- Establishes requirements for Standard, Expanded and Special Recreation Permit fee types
- Establishes an interagency national pass series, and authorizes site-specific and regional passes
- Outlines how revenues may and may not be used
- Sets prohibitions on fees for certain persons or places
- Mandates public participation and RAC involvement



Business Plan Objectives



- Describe the goals of the BLM fee program and methods to achieve them
- Determine appropriate recreation site fees and compliance with FLREA
- Provide for and consider public comment
- Outline the cost of administering sites/area and identify priorities for future expenditures
- Analyzes and explains how fees are consistent with criteria set forth in the Federal Lands Recreation Enhancement Act.

RAC and BLM Responsibilities



The RAC makes recommendations on:

- Establishing or eliminating recreation fees
- Modifying existing fees
- Expanding or limiting the recreation fee program

The BLM provides:

- A copy of FLREA and the recreation fee business plan to RAC members
- A copy of associated Federal Register Notices, and documentation on public participation outreach
- A FLREA and fee proposal briefing
- Additional public comment during fee proposal meeting





Upcoming Business Plans

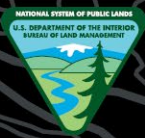


Long-Term Visitor Areas

Yuma Field Office
La Paz County, AZ
Imperial County, CA

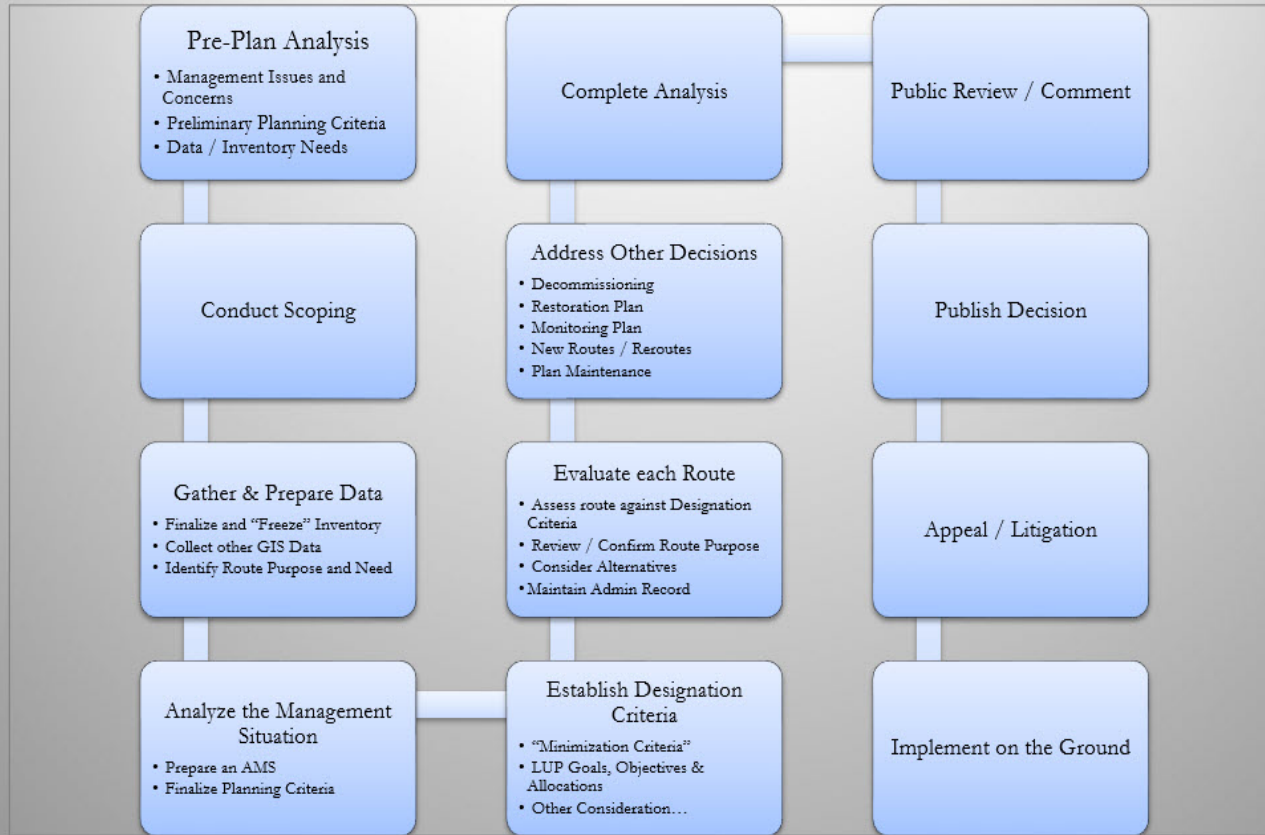
Virgin River Canyon Recreation Area Arizona Strip Field Office Mohave County, AZ





Travel and Transportation Management

Travel Management Plan Process



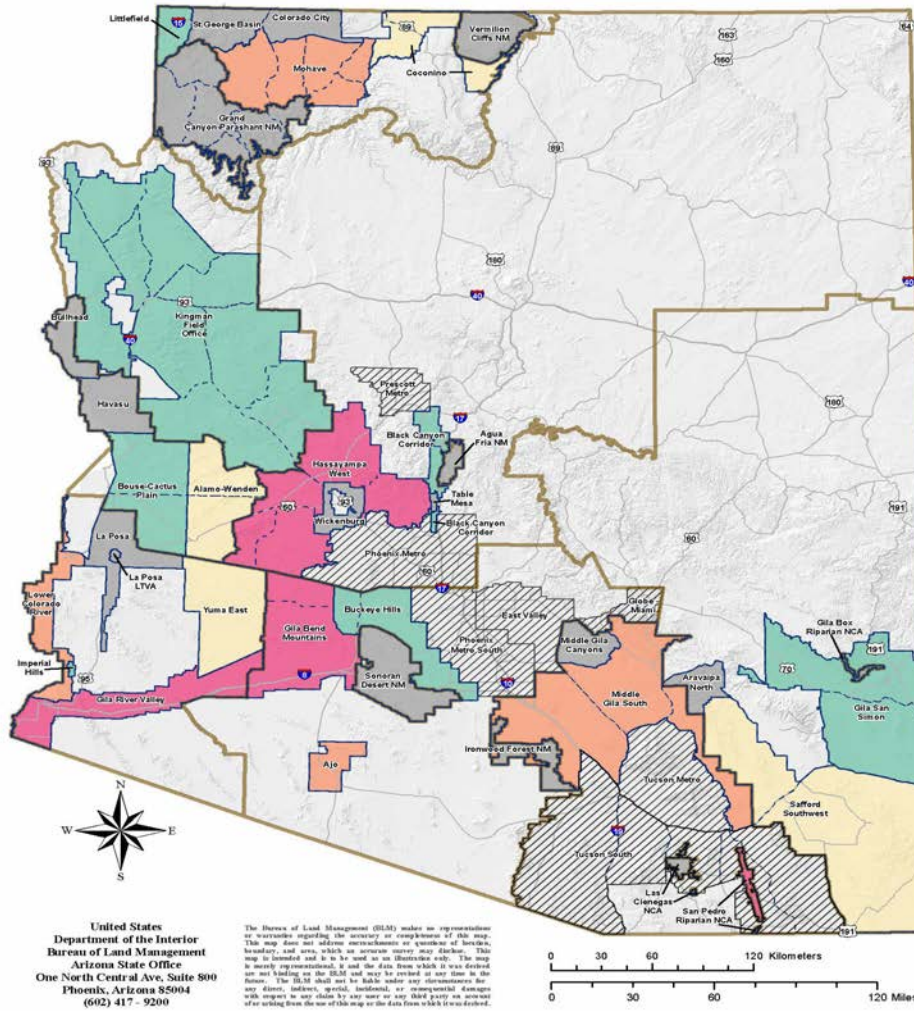


Travel Management Planning

- *BLM AZ has scheduled 19 Travel Management Plans (TMPs) for completion over the next 5 years.*
 - These 19 TMPs cover every District Office and Field Office in the State of Arizona.
 - These plans will evaluate over 23,000 miles of routes for inclusion in BLM AZ's Travel and Trail Management System.
 - Public meetings will assist us in learning how the public utilizes these routes currently, what they see their needs are for the future, where access is lacking, and how they can assist BLM AZ in sustaining these routes moving forward.
 - BLM AZ during this planning will be working not only with the public but also with other stakeholders, agencies, permittees (range, SRP, etc.), miners, landowners, and other interested parties.
 - ID Teams consisting of agency specialists will evaluate routes based on best management practices and information gathered from public meetings and other resources to develop a sustainable route network for current and future generations.



Arizona BLM Travel Management Plan Status by Completion Year (Federal FY)



United States
Department of the Interior
Bureau of Land Management
Arizona State Office
One North Central Ave, Suite 800
Phoenix, Arizona 85004
(602) 417 - 9200

Date: 7/7/2021

1:2,120,000



The Bureau of Land Management (BLM) makes no representation or warranty regarding the accuracy or completeness of this map. This map does not address encroachments or questions of border, boundary and area, which are necessary near dates. This map is intended and is to be used as an illustrative only. The map is mostly unreviewed, it and the data from which it was derived are not binding on the BLM and may be revised at any time in the future. The BLM does not be liable under any circumstances for any damages, including, but not limited to, consequential damages with respect to any claim by any user or any third party on account of or arising from the use of this map or the data from which it was derived.

Travel Management Plan Status

Federal FY Completion Year

- 2022
- 2023
- 2024
- 2025
- TMP Completed
- No TMP Planned (Metro Area)

- Travel Management Plan (TMP)
- Travel Management Area
- BLM Field Office Boundary
- Highways
- ADOT AZ State Highways
- ADOT AZ Federal Highways

TMP Schedule

- **FY 2022 TMPs to be completed:**
 - Arizona Strip District Office:
 - Littlefield TMP
 - Colorado River District Office:
 - Bouse/Cactus Plain TMP
 - Kingman TMP
 - Imperial Hills TMP
 - Gila District Office:
 - Gila/San Simon TMP
 - Phoenix District Office:
 - Buckeye Hills TMP
 - Black Canyon Corridor TMP



TMP Schedule

- **FY 2023 TMPs to be completed:**
 - Arizona Strip District Office:
 - Mohave TMP
 - Colorado River District Office:
 - Lower Colorado River TMP
 - Gila District Office:
 - Middle Gila South TMP
 - Phoenix District Office:
 - Ajo TMP
- **FY 2024 TMPs to be completed:**
 - Arizona Strip District Office:
 - Coconino TMP
 - Colorado River District Office:
 - Alamo/Wenden TMP
 - Yuma East
 - Gila District Office:
 - Safford Southwest TMP





TMP Schedule

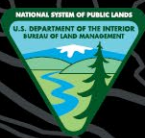
- **FY 2025 TMPs to be completed:**
 - Colorado River District Office:
 - Gila River Valley TMP
 - Gila District Office:
 - San Pedro Riparian NCA TMP
 - Phoenix District Office:
 - Gila Bend Mountains TMP
 - Hassaympa West TMP





Questions?





U.S. Department of the Interior
Bureau of Land Management



Lands, Minerals, and Energy

Investing in a Clean Energy Future





Division of Lands, Minerals, and Energy

Major Initiatives for 2021-2022:

- Renewable Energy
- Mining Law Administration
- Cadastral Survey
- Withdrawals
- Land Tenure



Renewable Energy

- Administration's Goals
- Land Use Plan Foundation
- Policy Guidance
- Prior Renewable Energy Efforts
- Renewable Ready Arizona



Renewable Energy – Administration’s Goals

➤ Executive Order 14008 of January 27, 2021 *Renewable Energy on Public Lands and in Offshore Waters*

- Review siting and permitting processes
- Increase Renewable Energy Production
- Engage Tribal authorities regarding the development and management of renewable and conventional energy resources on Tribal lands

➤ Secretarial Order 3399 of April 16, 2021

- Prioritize and accelerate permitting and environmental review of renewable energy projects and associated transmission line ROWs
- Engage Tribes early in the project planning process
- Engage low income and minority communities



Renewable Energy – Administration's Goals

➤ Energy Act of 2020

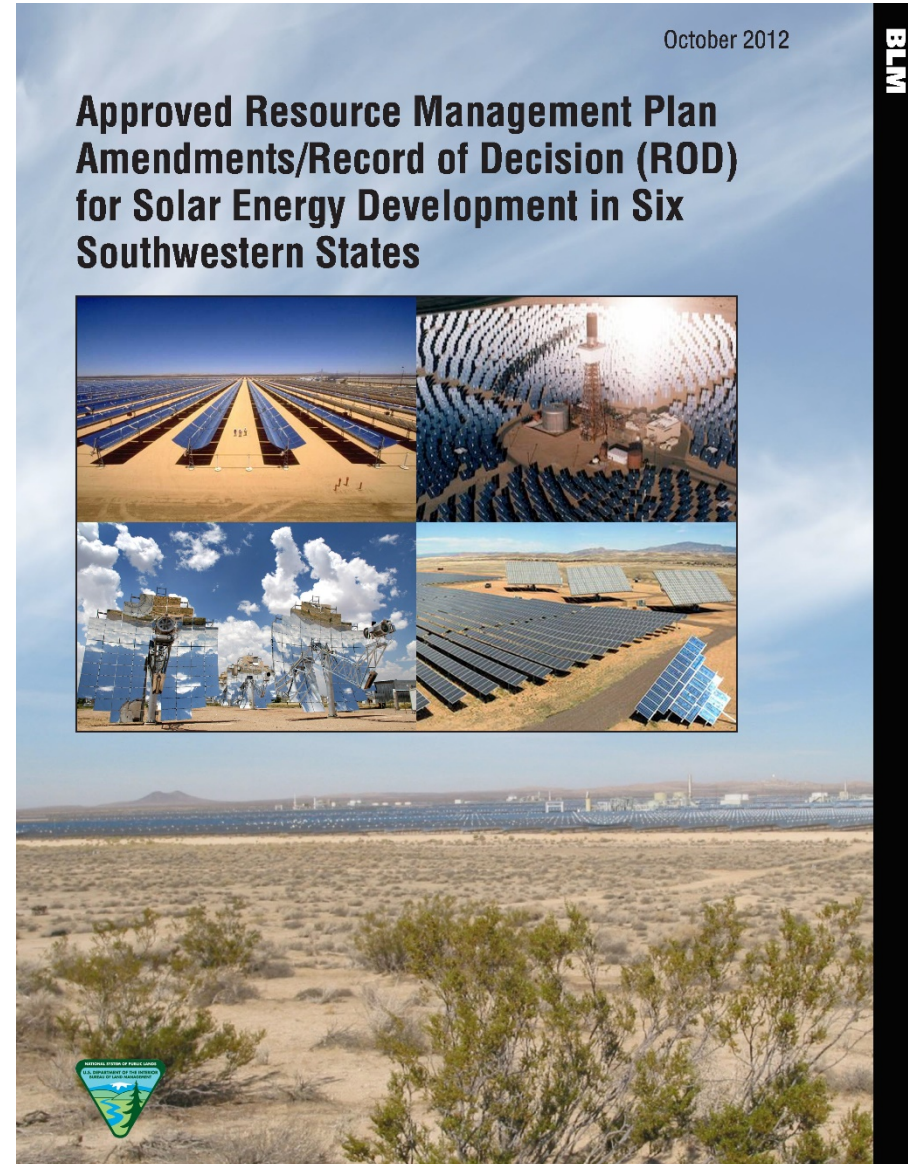
- RECO Teams
- Interagency MOU to facilitate coordination and processing of projects
- Report to Congress due Feb 1st of each year
- Increase economic certainty
- National Renewable Energy Goal:
25 GW by 2025



Renewable Energy – Land Use Plan Foundation

Land Use Plan - National

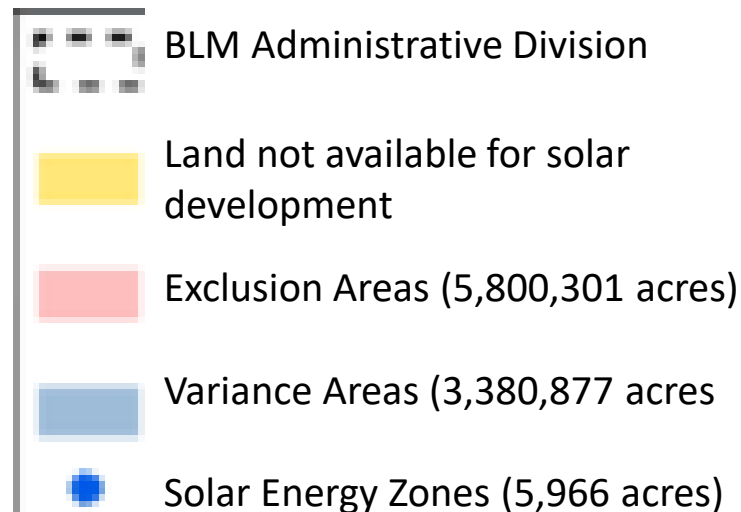
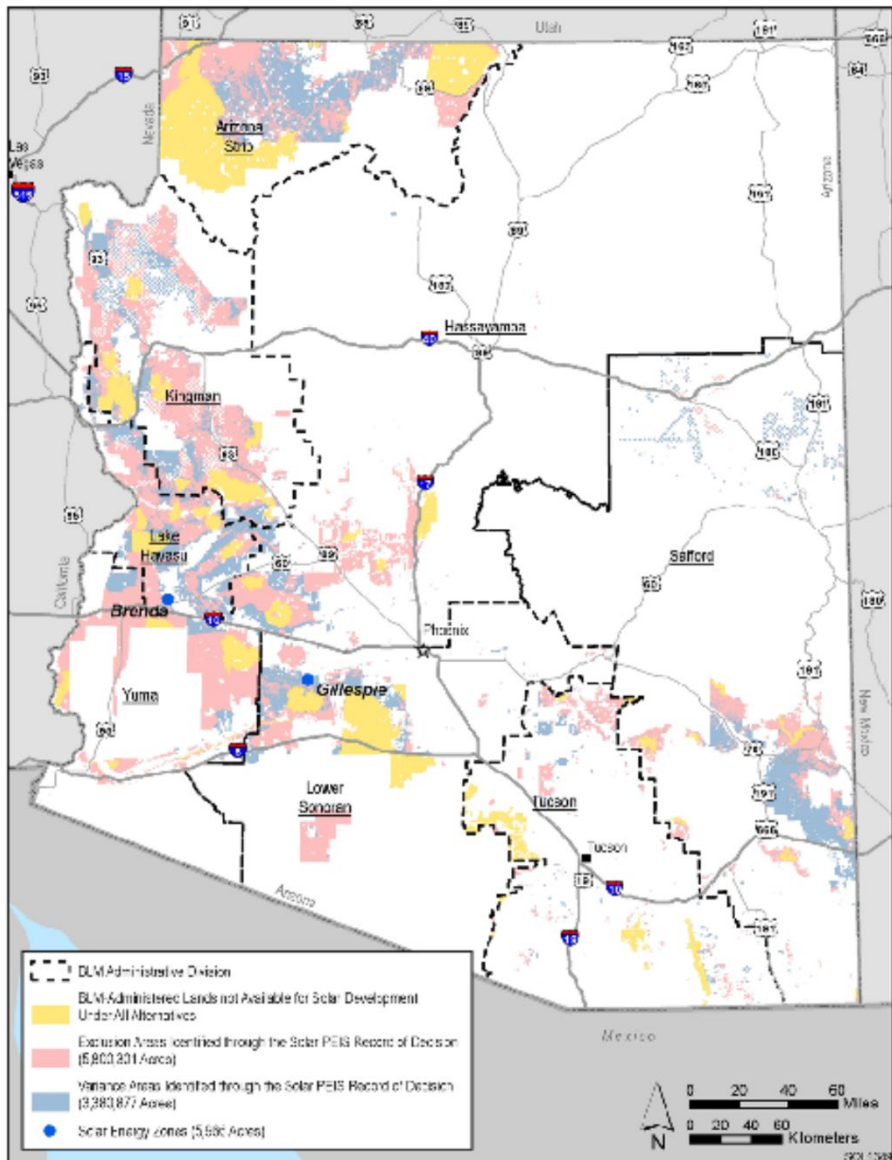
- [Approved Resource Management Plan Amendments and Record of Decision for Solar Energy Development in Six Southwestern States \(2012\)](#)
- National-level programmatic environmental impact statement (PEIS)
- AZ, CA, CO, NV, NM, and UT



Renewable Energy – Land Use Plan Foundation

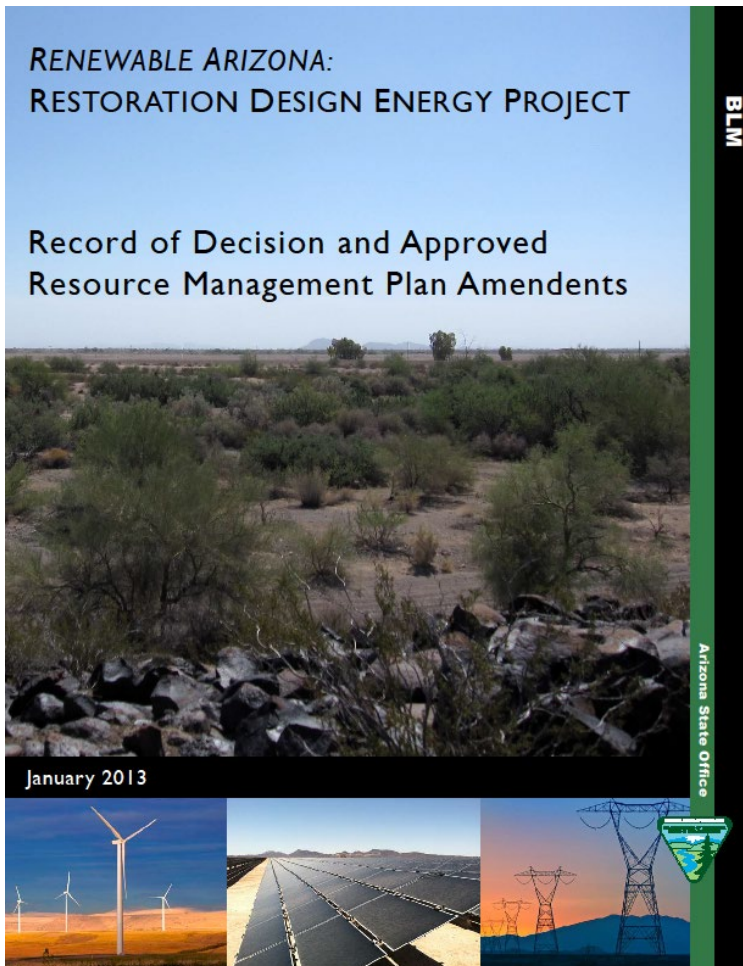
Arizona Land Use Allocations:

- Gillespie Solar Energy Zone (2,618 acres)
- Brenda Solar Energy Zone (3,348 acres)
- Variance Areas (3.4 million acres)
- Acres not available (~8.7 million acres)



Renewable Energy – Land Use Plan Foundation

- Land Use Plan - Arizona



- [Renewable Arizona: Restoration Design Energy Project](#) (RDEP; 2013)
- Environmental impact statement (EIS) tiered to the national Solar PEIS (2012)



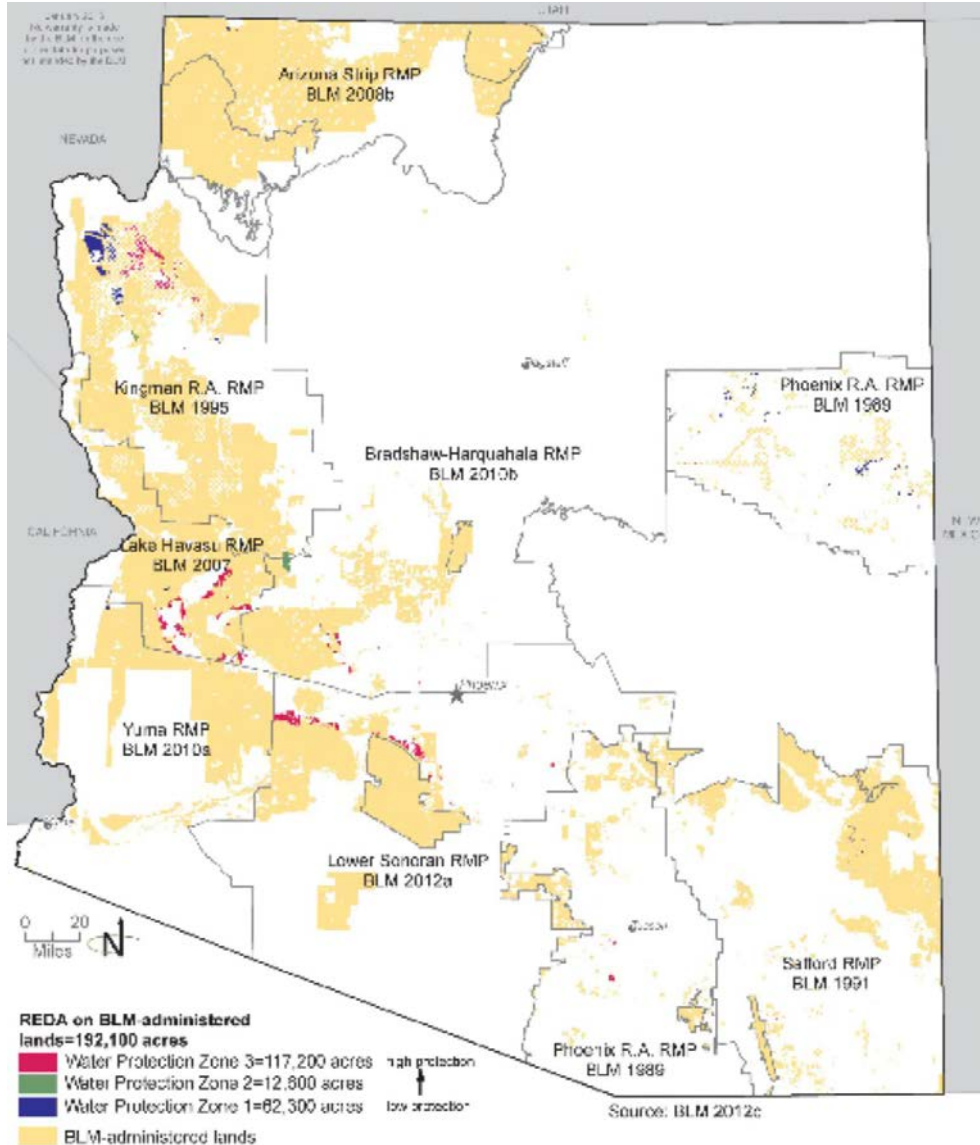
Renewable Energy – Land Use Plan Foundation

➤ Land Use Planning - Arizona (cont.)

- Arizona Land Use Allocations:
 - Agua Caliente Solar Energy Zone (2,550 acres)
 - Renewable Energy Development Areas (REDAs) (192,100 acres)
 - Design features associated with siting and design, construction, operation and maintenance, and decommissioning of renewable energy projects.



Renewable Energy – Land Use Plan Foundation



Renewable Energy Development Areas
192,100 acres, divided into three
Water Protection Zones.

**REDA on BLM-administered
lands=192,100 acres**

- Water Protection Zone 3=117,200 acres
- Water Protection Zone 2=12,600 acres
- Water Protection Zone 1=62,300 acres

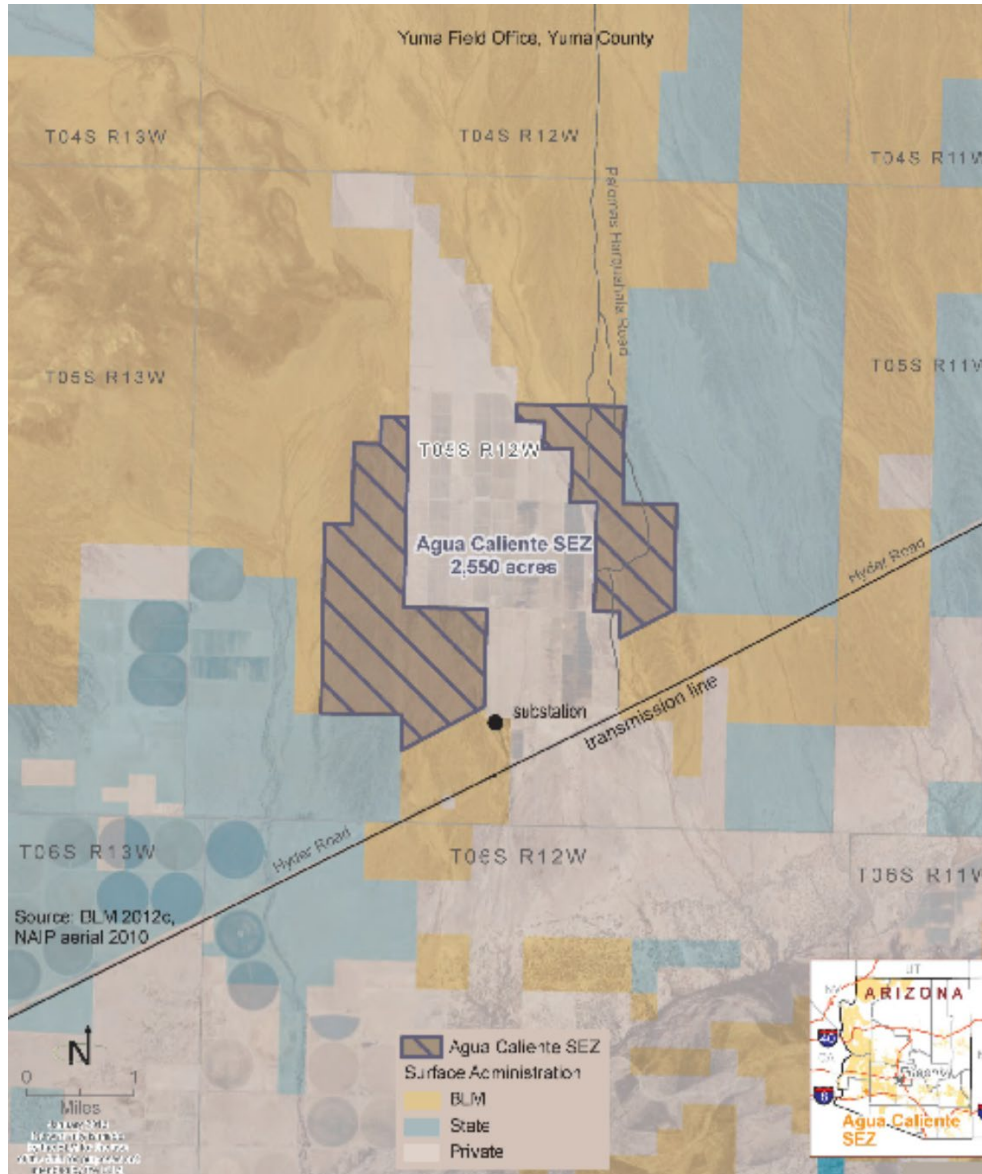
BLM-administered lands

high protection ↑ low protection



Renewable Energy – Land Use Plan Foundation

Agua Caliente Solar Energy Zone
Yuma Field Office, Yuma County
2,550 acres





Renewable Energy – Policy Guidance

- Title 43 Code of Federal Regulations Part 2800
Rights-of-Way under the Federal Land Policy Management Act
(81 FR 92207, Dec. 19, 2016) (§§2801-2809)

Two major pathways for proposed solar and wind energy project applications:

- 1) Competitive Lease (§2809), or
- 2) Non-competitive ROW Grant (§§2801.9, 2803-2805)



Renewable Energy – Policy Guidance

Two major pathways for proposed solar and wind project applications: *(cont.)*

1) Competitive Lease (§2809),

- Within *designated leasing area* (§2801.5(b)(9))
 - e.g. Solar Energy Zones
- There is competing interest for same lands
 - Call for Nominations (*Federal Register* notice; §2809.11)
 - Notice of Competitive Offer (*Federal Register* notice at least 30-days prior to auction; §2809.13)
- Upon lease issuance, Plan of Development within 2 years (and other due diligence requirements)



Renewable Energy – Policy Guidance

Two major pathways for proposed solar and wind project applications: *(cont.)*

2) **Non-Competitive ROW Grant** (§§2801.9, 2803-2805)

- [Standard Form 299](#) ROW Application (§2804.12 (a))
- Same standard requirements:
 - Qualified applicant (§2803.10 & §2804.25)
 - Cost recovery fee for processing & monitoring costs (§2804.14, §§2804.19-20 Category 6, & §2805.16)
 - NEPA review and consultation
 - ROW Grant Terms and Conditions (§§2805.10-15)
 - ROW Annual Rent (§2806.10)
 - Performance and Reclamation Bond (§2805.20)



Renewable Energy – Policy Guidance

2) Non-Competitive ROW Grant (*cont.*)

- Additional requirements (§2804.12 (b) & (c)):
 - Plan of Development
 - Address all known potential resource conflicts and conduct any needed resource surveys or inventories,
 - Early discussions with grazing permittees,
 - Hold two preliminary (pre-NEPA) meetings: 1) with BLM, and 2) with other Federal and State agencies and Tribal and local governments to facilitate coordination of potential issues and concerns.
- FERC permit per *Federal Power Act of 1935*



Renewable Energy – Policy Guidance

- **Non-Competitive Solar & Wind ROW Grants -**
BLM will evaluate the application:
- Prioritize applications with lesser resource conflicts over applications with greater resource conflicts (§2804.25) according to criteria listed in §2804.35.
 - Determine if applicant demonstrated the technical or financial capability to construct the project or operate facilities within the ROW (§2804.26).
 - Determine if application is complete to begin processing.



Prior Renewable Energy Efforts

➤ Outcomes: 2009 - 2020

- Many applications; most were not successful:
 - Lacking available transmission capacity.
 - Market uncertainty.
 - Unable to secure power purchase agreements.
- BLM AZ issued rights-of-way (ROWs) for 5 solar projects and 2 wind projects:
 - Three of the five solar ROWs are small scale (<20 MW)
 - Fourth project: Recently secured power purchase agree't
 - Fifth project: ROD issued/ROW not signed/not developed
 - Navajo County Wind Energy project operational since 2009
 - Mohave County Wind Energy project near-operational 2021



Prior Renewable Energy Efforts

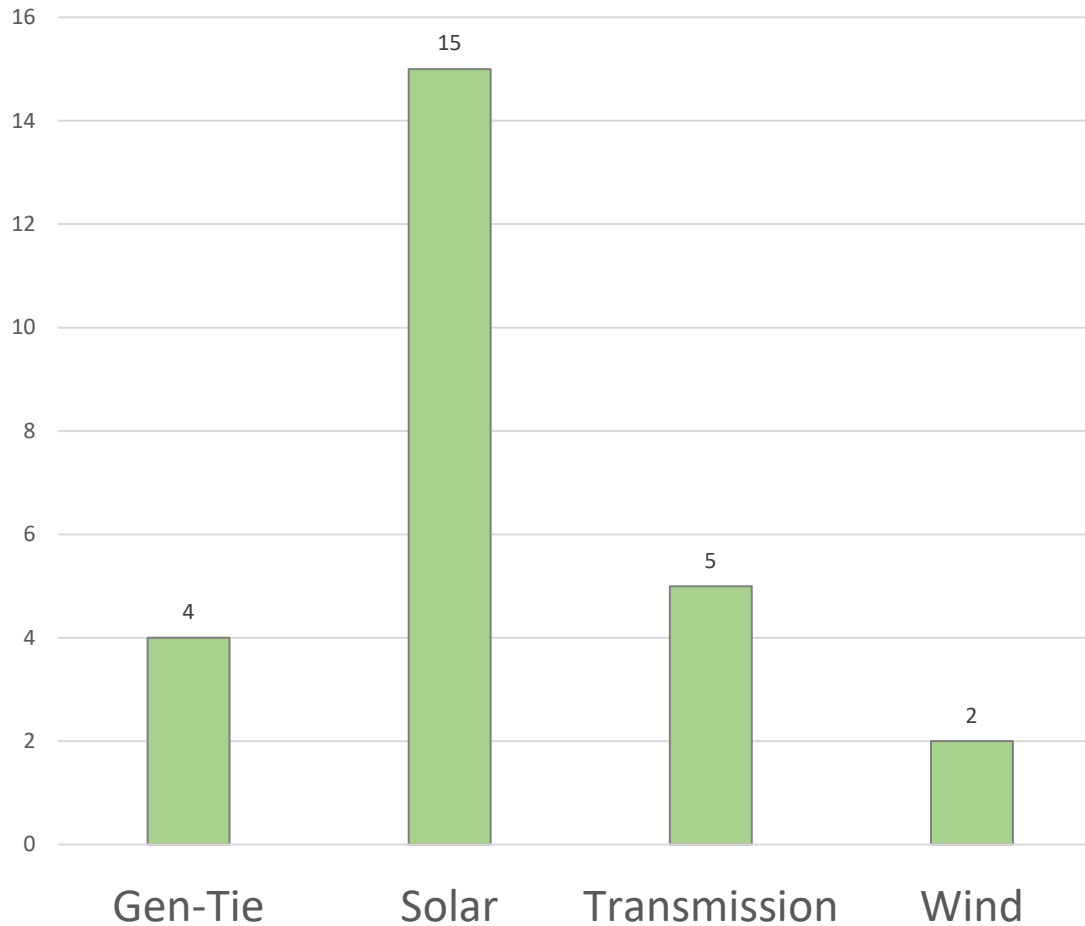
➤ Lessons Learned:

- Land Use Plan foundation is good – *proactively identified areas suitable for renewable energy while minimizing natural and cultural resource conflicts.*
- Factors for successful projects:
 - Access to powerline infrastructure
 - Access to water
 - Viable renewable energy market
 - Power purchase agreements
- Increase renewable energy skills, knowledge, and capability at the field level



Renewable Ready Arizona

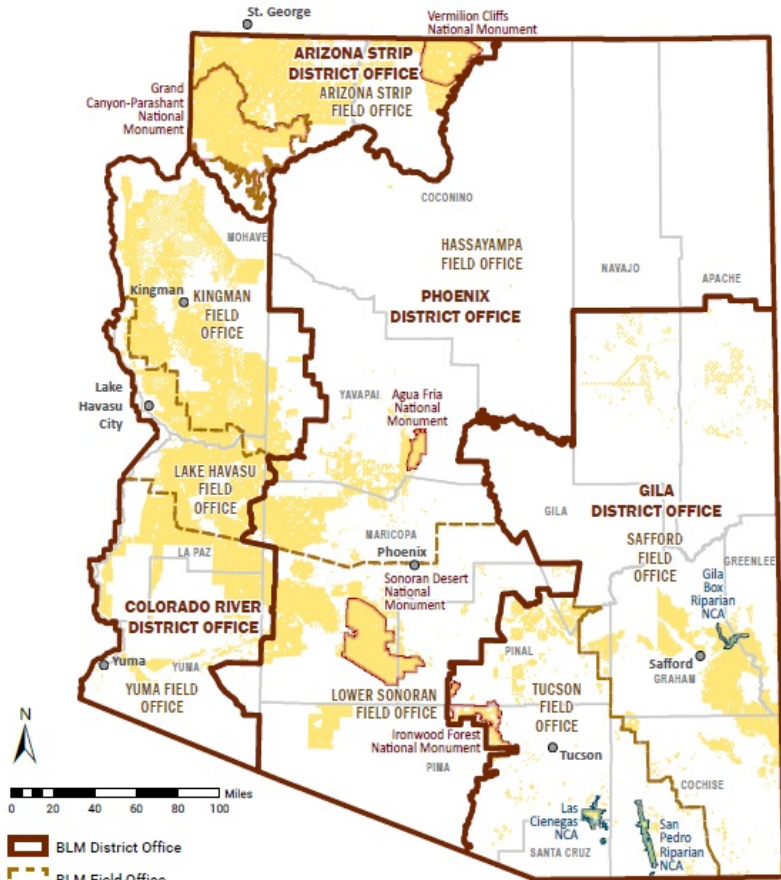
➤ Current Status – *No. Projects by Type*



Total = 26
as of 7/16/2021

Renewable Ready Arizona

➤ Current Status



Bureau of Land Management Arizona State Office
Map produced: June 23, 2021

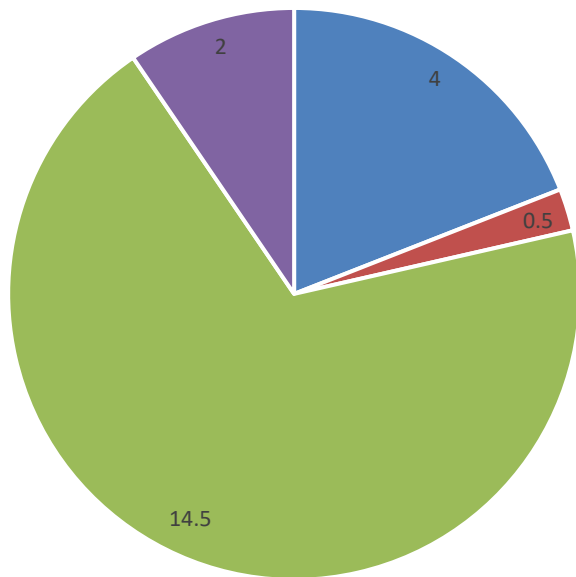
Coordinate System: NAD 1983 UTM Zone 12N | Scale: 1:3,600,000 at 8.5x11 page output
No warranty is made by the Bureau of Land Management as to the accuracy, reliability, or completeness of these data for individual use or aggregate use with other data.

OFFICE	PROJECT TYPE	COUNT
Colorado River District		12
	Solar	7
	Wind	1
	Gen-Tie	2
	Transmission	2
Phoenix District		8
	Solar	6
	Wind	0
	Gen-Tie	1
	Transmission	1
Gila District		6
	Solar	2
	Wind	1
	Gen-Tie	1
	Transmission	2
Total Count of Projects		26

Renewable Ready Arizona

➤ Current Status – *by Area Designation*

No. of Projects within Area Designation



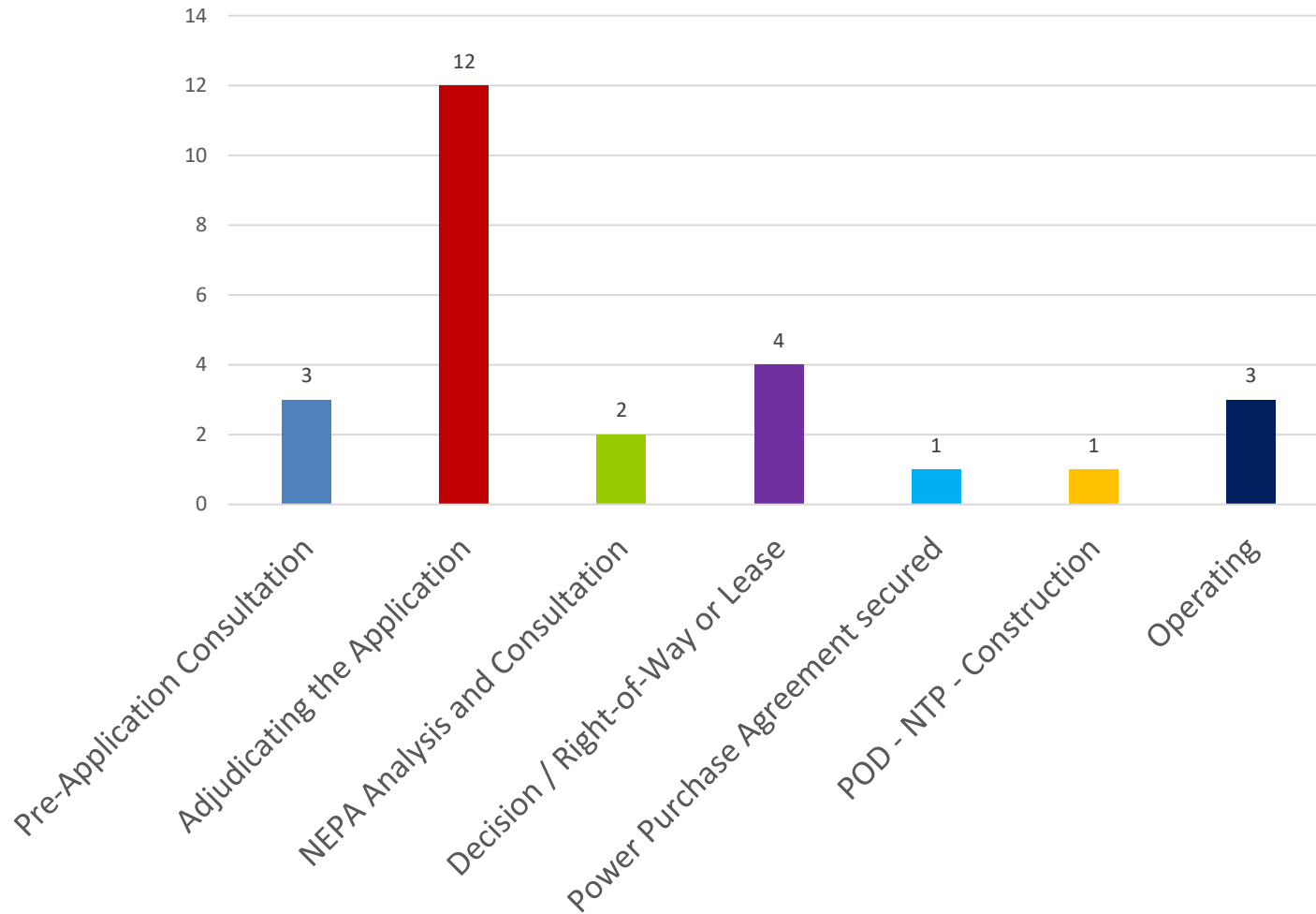
■ SEZ ■ REDA ■ Variance ■ Other

SEZ	4
REDA	0.5
Variance	14.5
Other	2



Renewable Ready Arizona

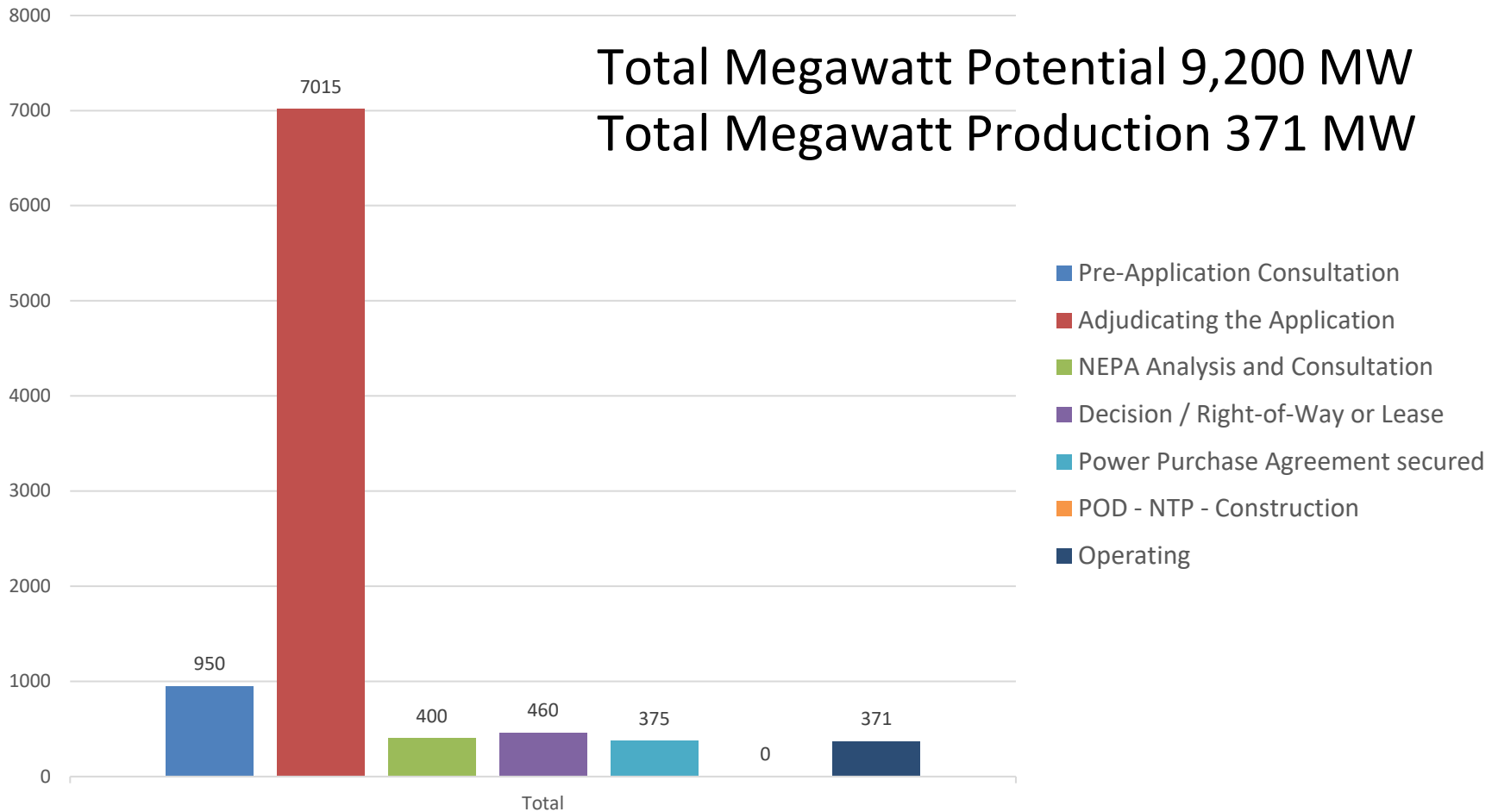
➤ Current Status – *No. Projects by Project Status*





Renewable Ready Arizona

➤ Current Status – *Megawatt Potential*





Renewable Ready Arizona

➤ Strategizing for Success

- Working in collaboration with BLM Headquarters and other BLM states to evaluate policy foundation, consider economic & conservation incentives, and to facilitate Renewable Energy development
- Proactively conducting Class III Cultural Resource Surveys within SEZs and REDAs (via contract).
- Update geospatial analysis of existing and proposed infrastructure and additional areas for development.
- Increase renewable energy skills, knowledge, and capability at the field level.

Renewable Ready Arizona

➤ Strategizing for Success



- **Engage government entities at multiple levels**
 - Develop strategies to facilitate long-term success and to facilitate a viable Renewable Energy market
 - Infrastructure & Grid reliability – interstate and within state
 - Tribal and rural area economic development opportunities



Renewable Ready Arizona

➤ Strategizing for Success

- **Engage NGOs, stakeholders, and partners:**
 - Encourage pre-application meetings with proponents
 - Encourage development in SEZs and REDAs
 - to minimize natural & cultural resource conflicts and
 - to facilitate Administration's conservation goal.
 - Facilitate development on adjacent private lands (e.g. Gen-Tie)
 - Proposed infrastructure and emerging technologies
 - Customer needs and market trends



U.S. Department of the Interior
Bureau of Land Management



Renewable Ready Arizona





Division of Lands, Minerals, and Energy

Major Initiatives for 2021-2022:

- Renewable Energy
- Mining Law Administration
- Cadastral Survey
- Withdrawals
- Land Tenure



Mining Law Administration

- 50,000 active mining claims
- State Office:
 - Receive/process mining claim fees
 - Adjudicate claims, bonds & maintain case file
- Field Offices:
 - Review notices, estimate bond amounts, and
 - approve mine plan of operations.
- Mining Claim Case Files

<https://www.blm.gov/az/MiningClaimCaseFiles/index.php>.

- MLRS – [Mineral & Land Records System](#)

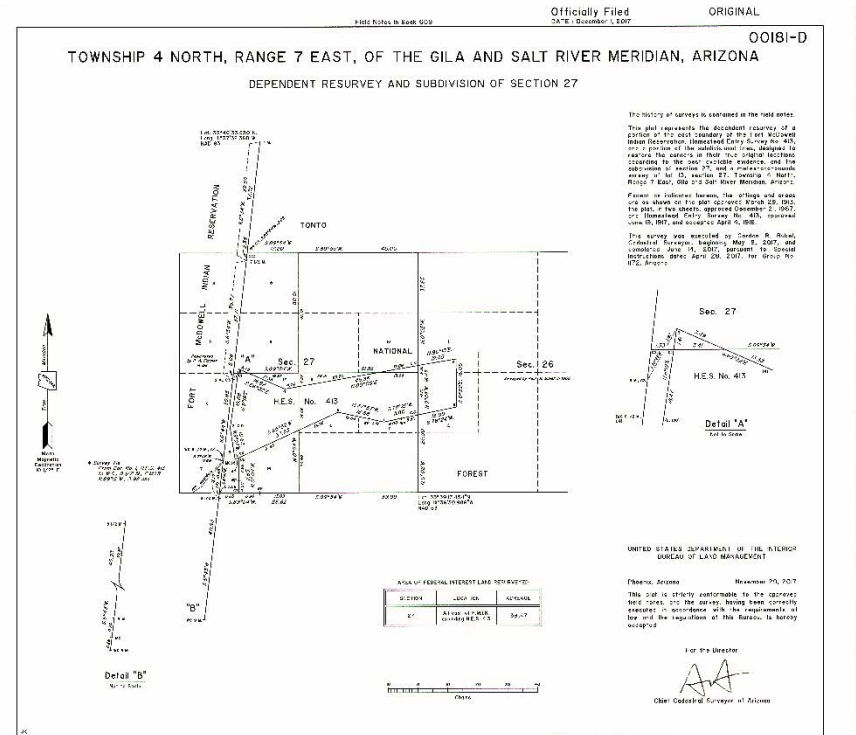
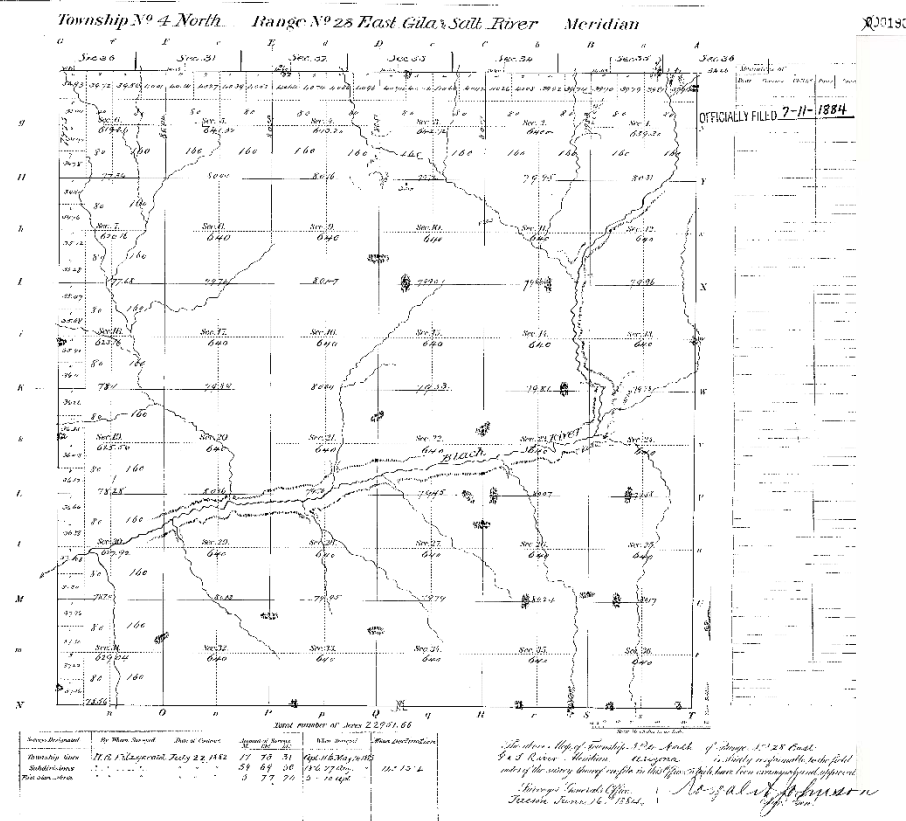


Branch of Cadastral Survey

- Preserves original survey plats and field notes which serve as base documents for most legal descriptions.
- Provide technical direction on land boundary issues.
- Provide cadastral services to other Federal agencies (*pending - 2 Tribal, 2 FS, 4 military*)
- Land Survey Report (legal description review) for BLM land tenure actions and land use authorizations valued >\$10,000 (*4 projects pending*)



Branch of Cadastral Survey Survey Plats



Branch of Cadastral Survey





Lands and Realty

- Withdrawals - total 12 proposed new, extensions, or expansion withdrawals
- Two Recreation and Public Purposes Act leases/patents
- Land Tenure
 - Dingell Act – 2 completed and 3 in progress
 - One funded LWCF project in progress (Cross F)
 - One newly funded LWCF project (GDO/TFO)
 - One land sale



Division of Lands, Minerals, and Energy

Elena Fink,
Deputy State Director
efink@blm.gov



April Rabuck,
Branch Chief,
Lands & Minerals,
arabuck@blm.gov

Mark Morberg,
Cadastral Survey Chief
mmorberg@blm.gov



Amy DePestel,
Supervisory
Land Law Examiner
adepestel@blm.gov