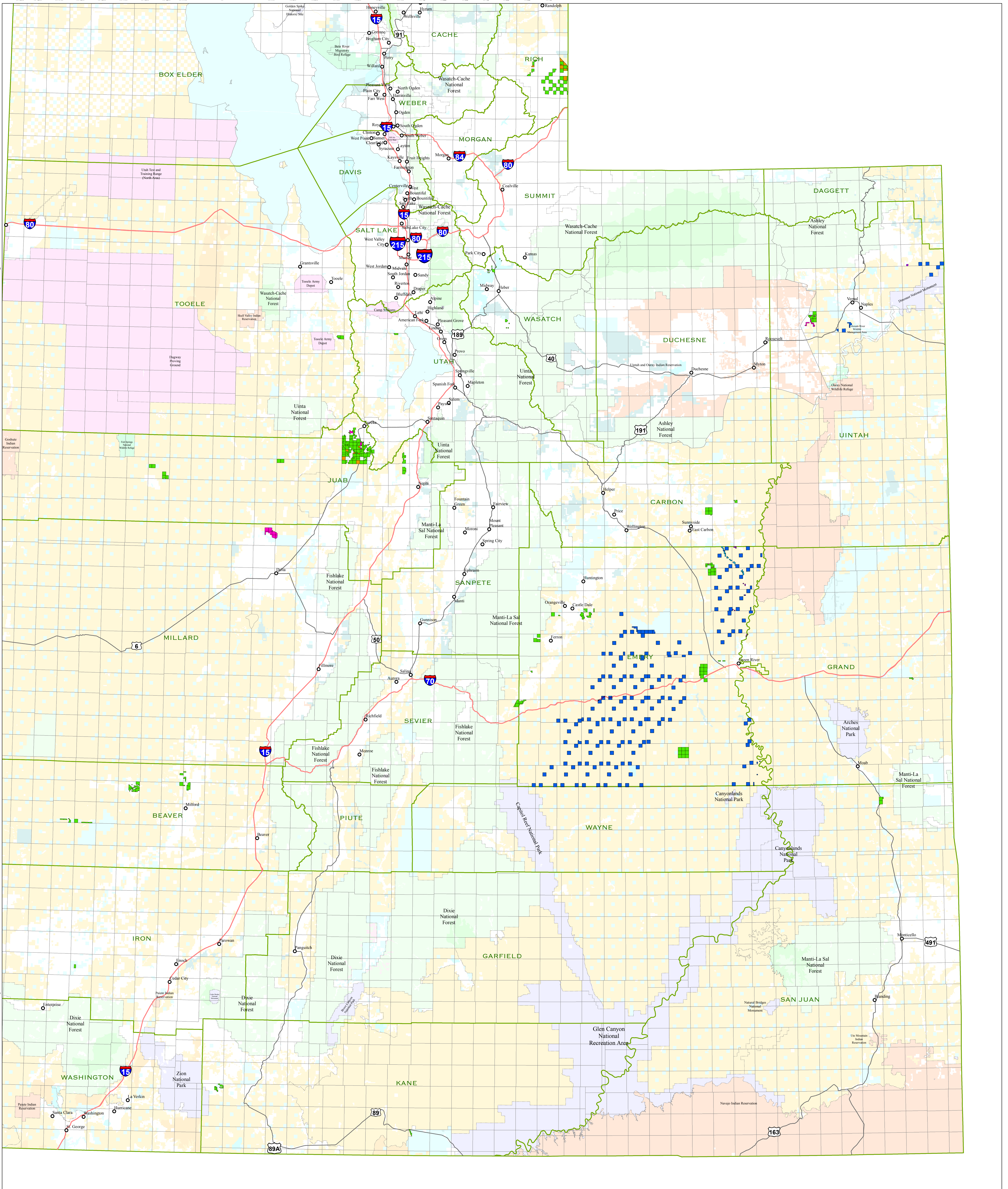


# Emery County Public Land Management Act – Proposed Land Exchange

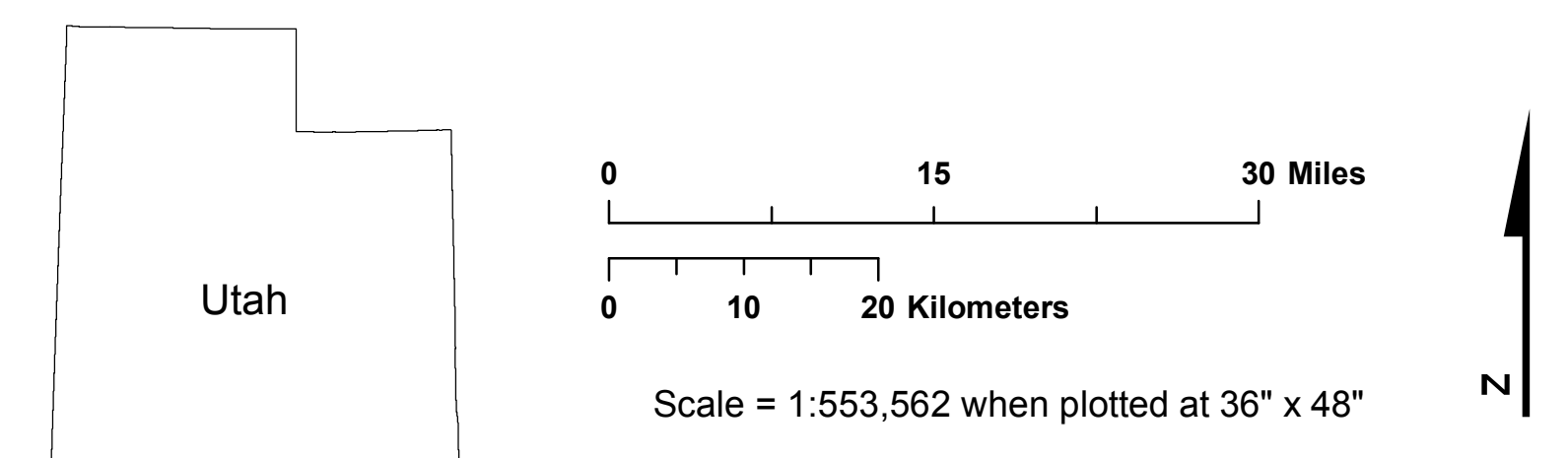
This map prepared at the request of Senator Orrin Hatch and Representative John Curtis

December 10, 2018

Exhibit A



- |  |   |  |  |
|--|---|--|--|
| <span style="color: green;">■</span> BLM Surface & Mineral Lands Proposed to Transfer to SITLA | <span style="color: blue;">■</span> SITLA Surface & Mineral Lands Proposed to Transfer to BLM | <span style="color: yellow;">■</span> Bureau of Land Management (BLM)            | <span style="color: lightblue;">■</span> State                             |
| <span style="color: magenta;">■</span> BLM Mineral Lands Proposed to Transfer to SITLA         | <span style="color: purple;">■</span> SITLA Mineral Lands Proposed to Transfer to BLM         | <span style="color: orange;">■</span> Indian Reservation (IR)                    | <span style="color: cyan;">■</span> State Parks and Recreation             |
| <span style="color: brown;">■</span> BLM Surface Lands Proposed to Transfer to SITLA           | <span style="color: cyan;">■</span> SITLA Surface Lands Proposed to Transfer to BLM           | <span style="color: pink;">■</span> Military Reservations and Corps of Engineers | <span style="color: teal;">■</span> State Wildlife Reserve/Management Area |
|  |   | <span style="color: lightblue;">■</span> National Park Service (NPS)             | <span style="color: lightgreen;">■</span> US Forest Service (USFS)         |
|  |   | <span style="color: white;">■</span> Private                                     |  |



No warranty is made by the Bureau of Land Management as to the accuracy, reliability, or completeness of these data for individual use or aggregate use with other data. Original data were compiled from various sources. This information may not meet National Map Accuracy Standards. This product was developed through digital means and may be updated without notification.

