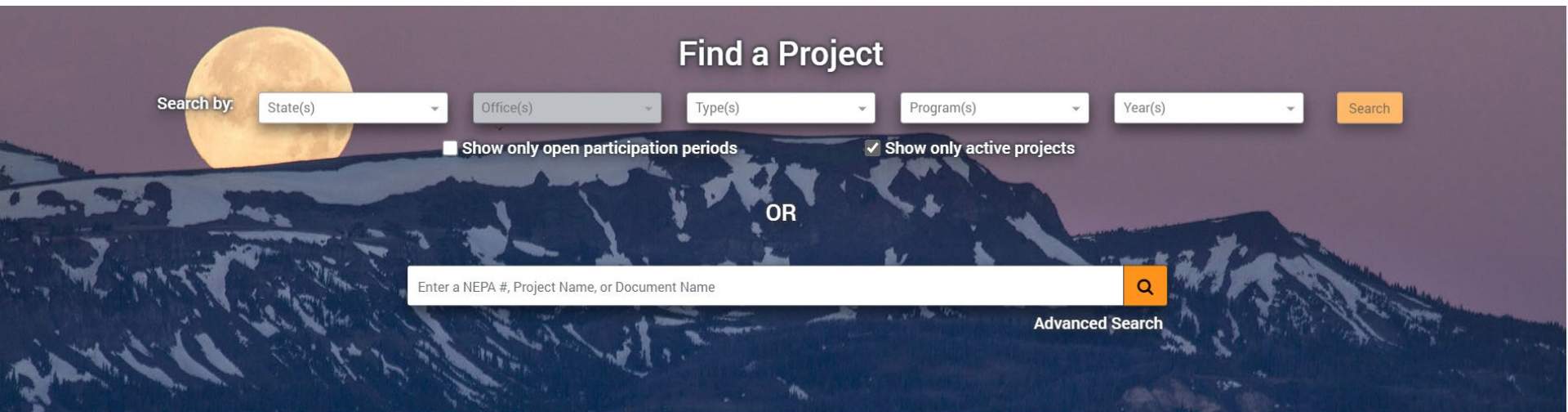




U.S. Department of the Interior
Bureau of Land Management

BLM Alaska Project Updates

BLM National NEPA Register: <https://eplanning.blm.gov/eplanning-ui/home>



Welcome!

Welcome to the Bureau of Land Management National NEPA Register. The National NEPA Register allows online review and comment of BLM planning and implementation projects. This site also simplifies document searches by enabling searches by geographic location, project resource type, project year, and other specific fields.

Projects from Calendar Year 2015 forward will be available on the map search feature. Older documents may be found with a text search. Please contact your local BLM office if you cannot find a document.

Links	Planning	Find a BLM Office
BLM NEPA	Cooperating Agency Info	BLM Web Page
DOI Web Page	Council on Environmental Quality	Federal Register Notices

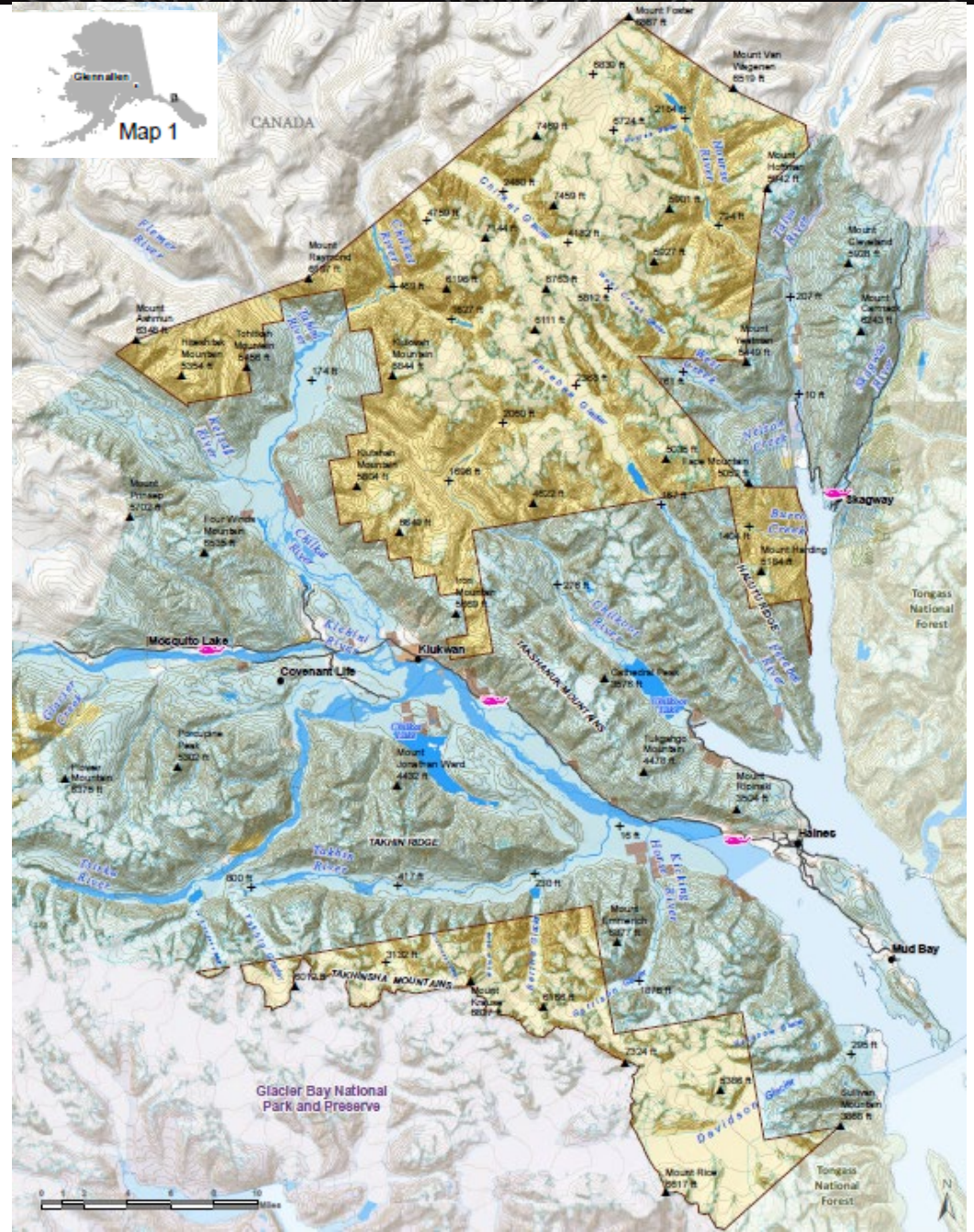
Kevin Pendergast
November 17, 2020



Haines RMP Amendment

Planning Area:
Approx. 920,000
acres

BLM-managed
Lands: Approx.
317,000 acres

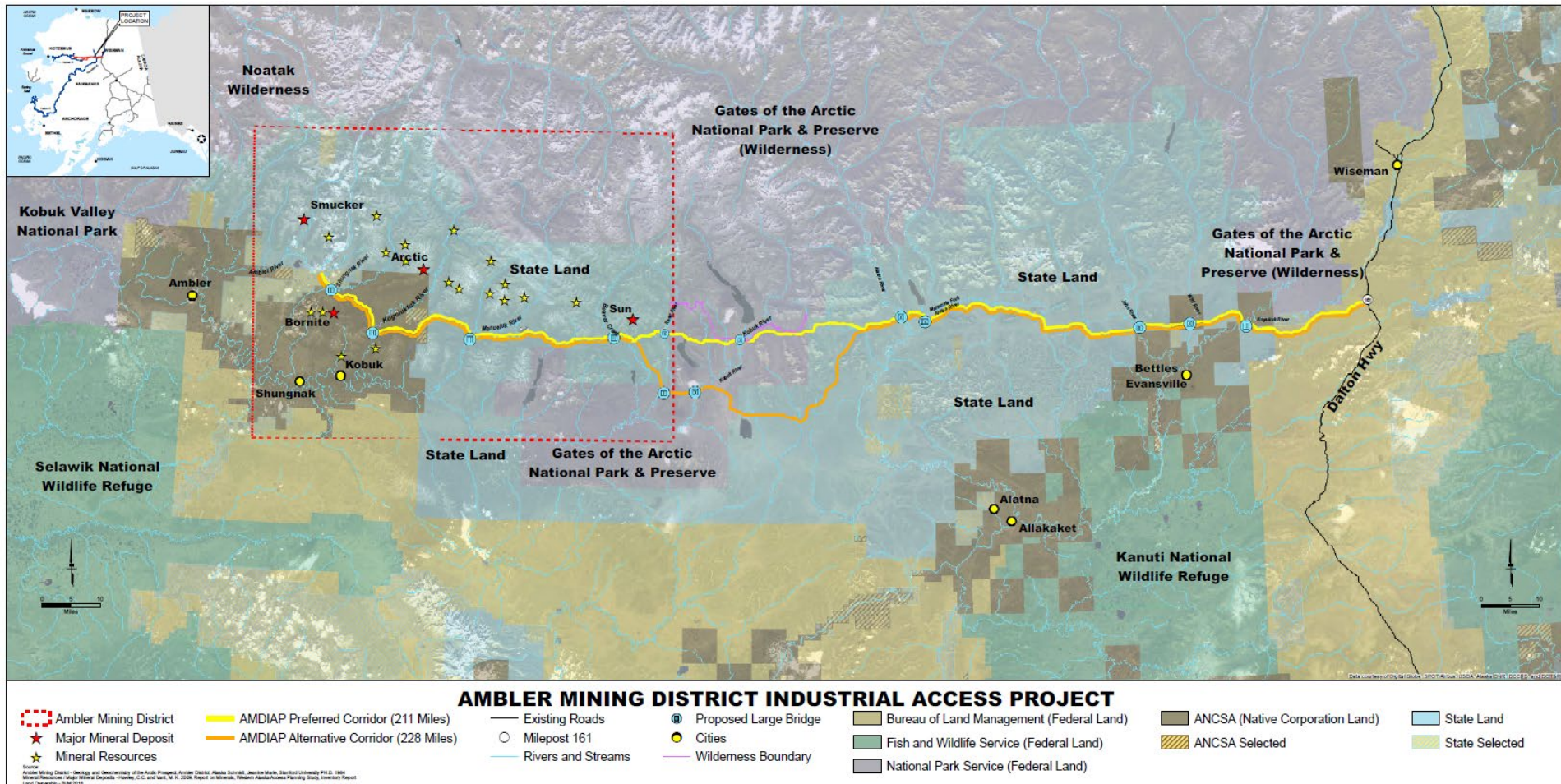




Ambler Road EIS

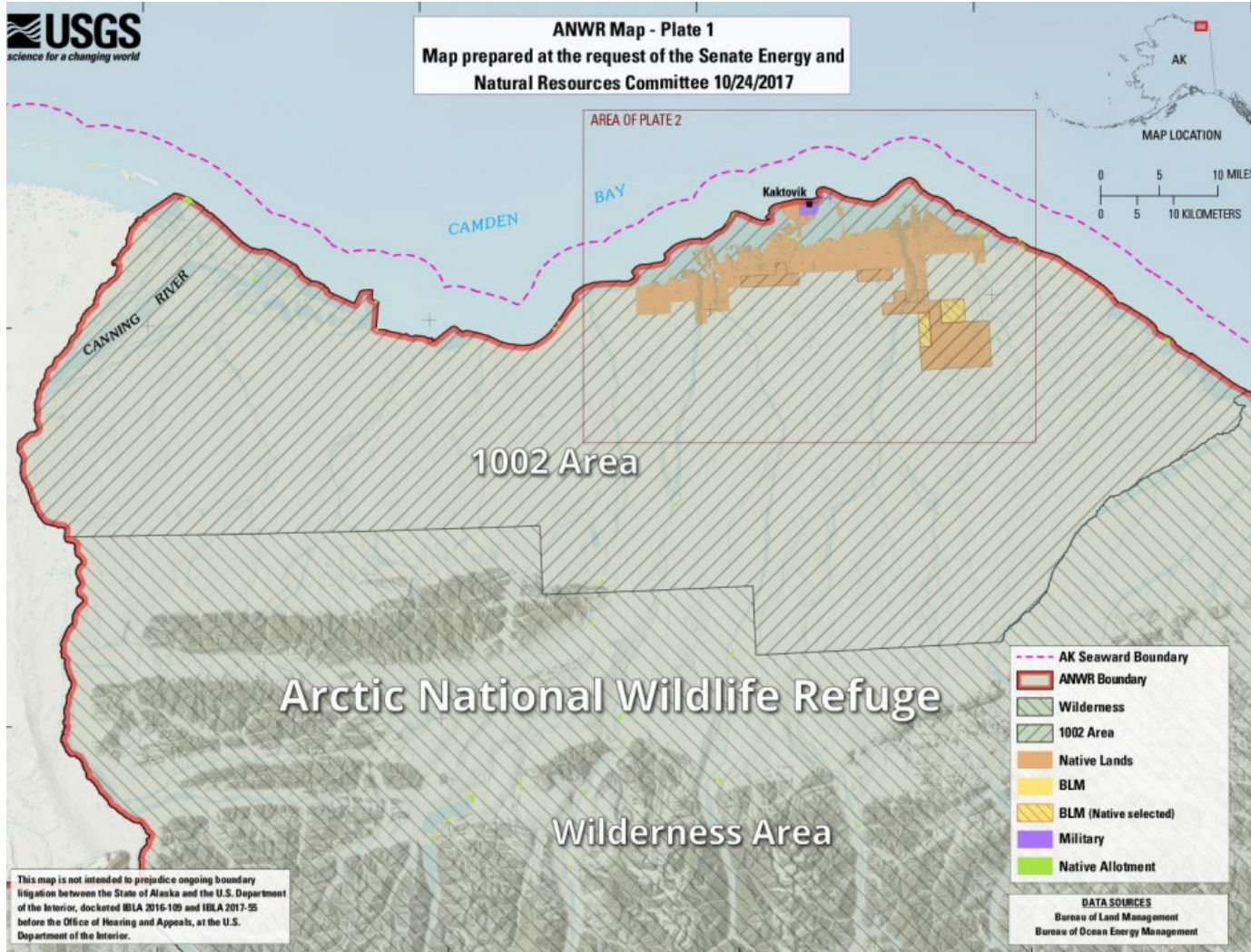
Project Area: 211-mile roadway

BLM-managed Lands: Approx. 26 miles (first section of Road off the Dalton Highway)





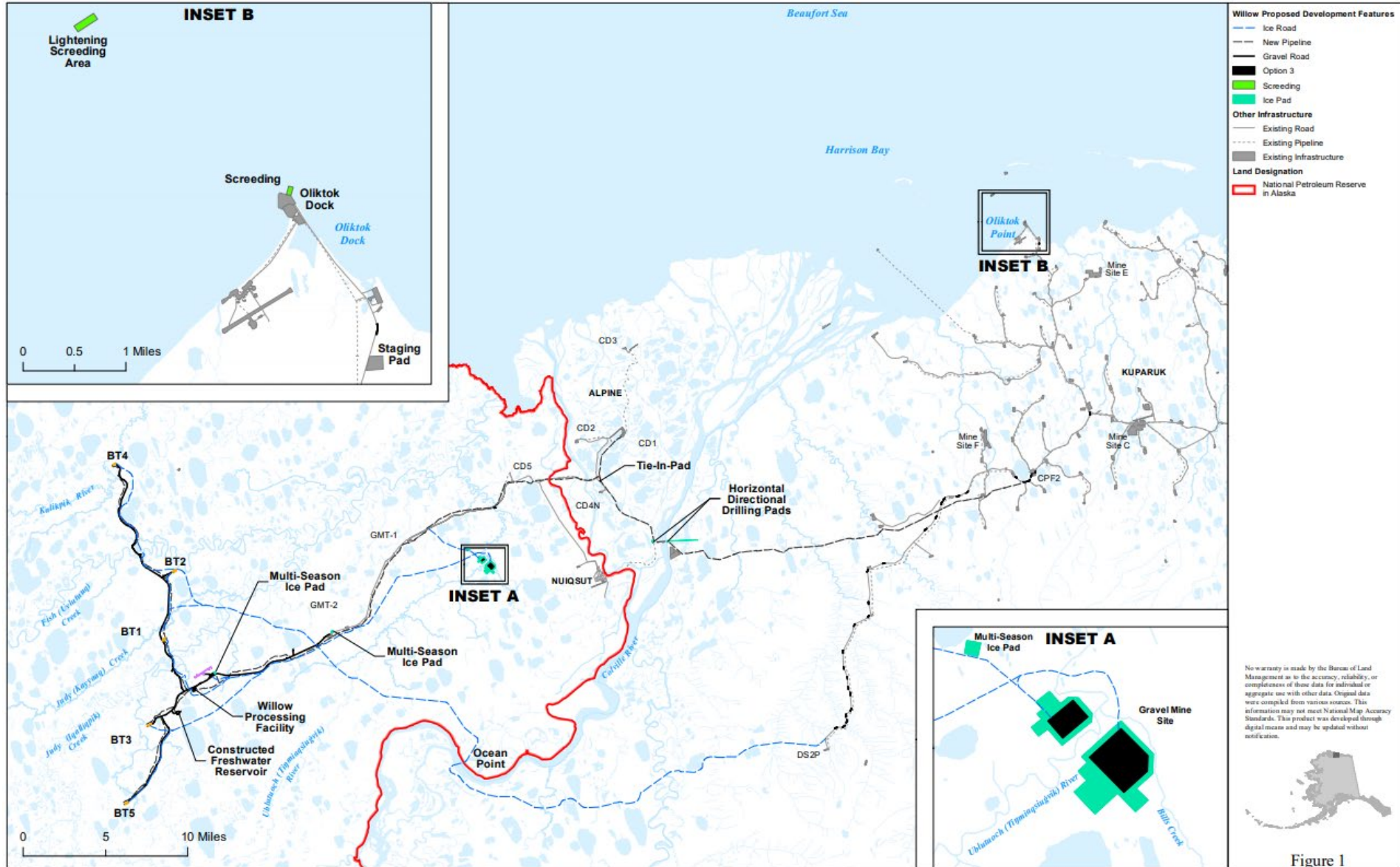
Coastal Plain Leasing EIS



Leasing Area:
Approx. 1.56 Million acres

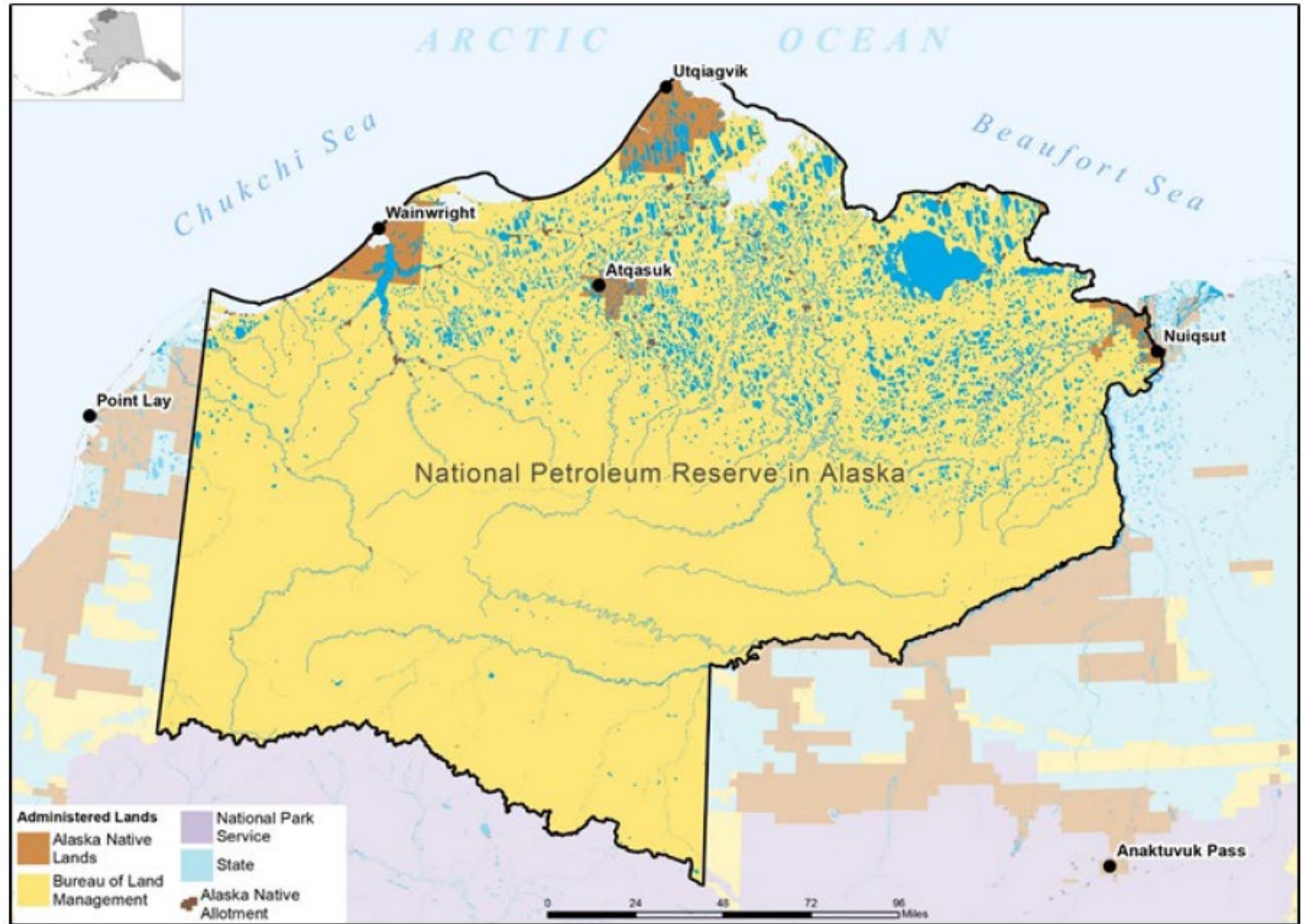


Willow Master Development Plan





National Petroleum Reserve in Alaska



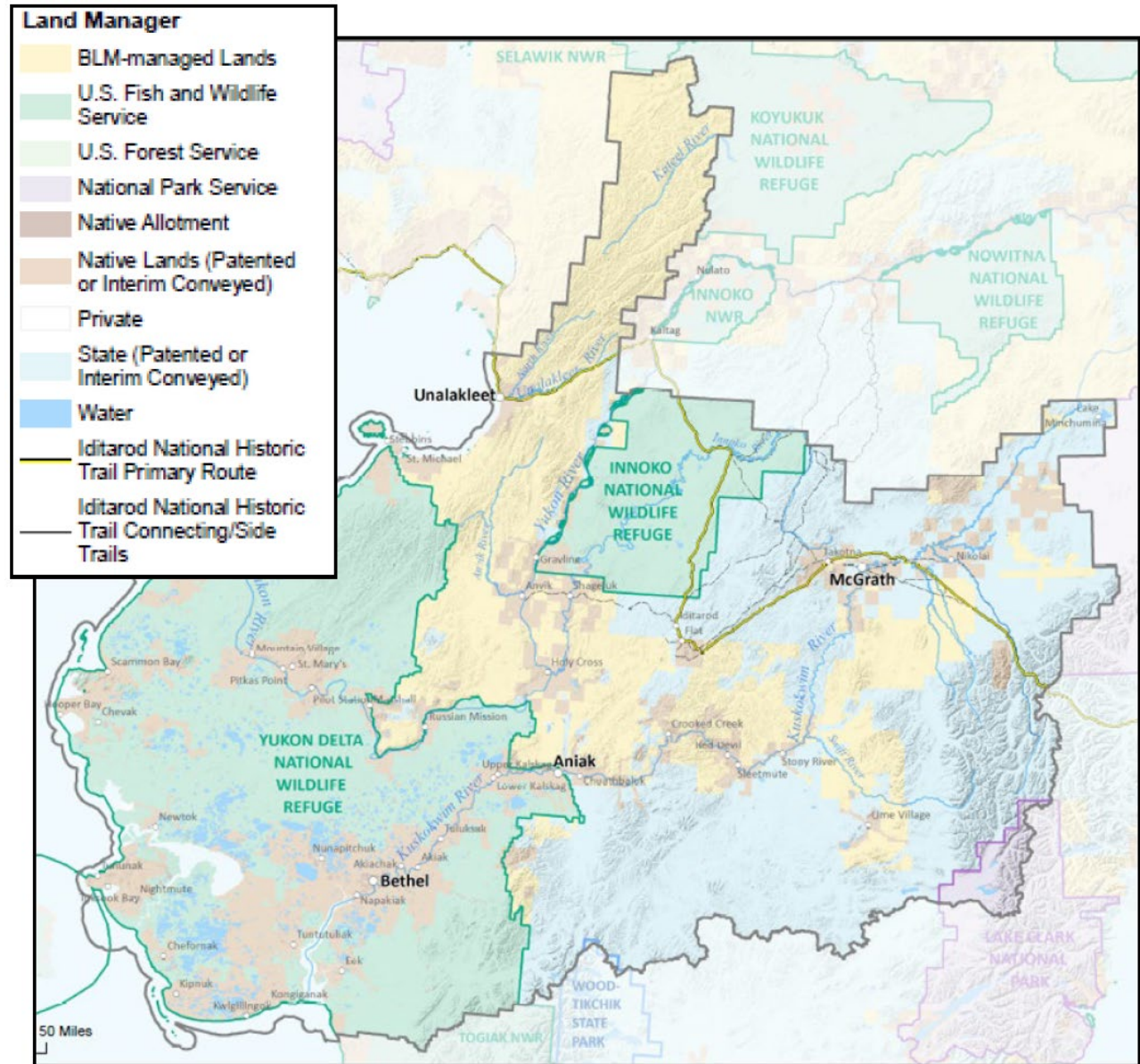
Leasing Area:
Approx. 22.5 million acres BLM-managed lands



Bering Sea – Western Interior RMP

Planning Area:
Approx. 62.3
Million acres

**BLM-managed
Lands:** Approx.
13.5 Million
acres

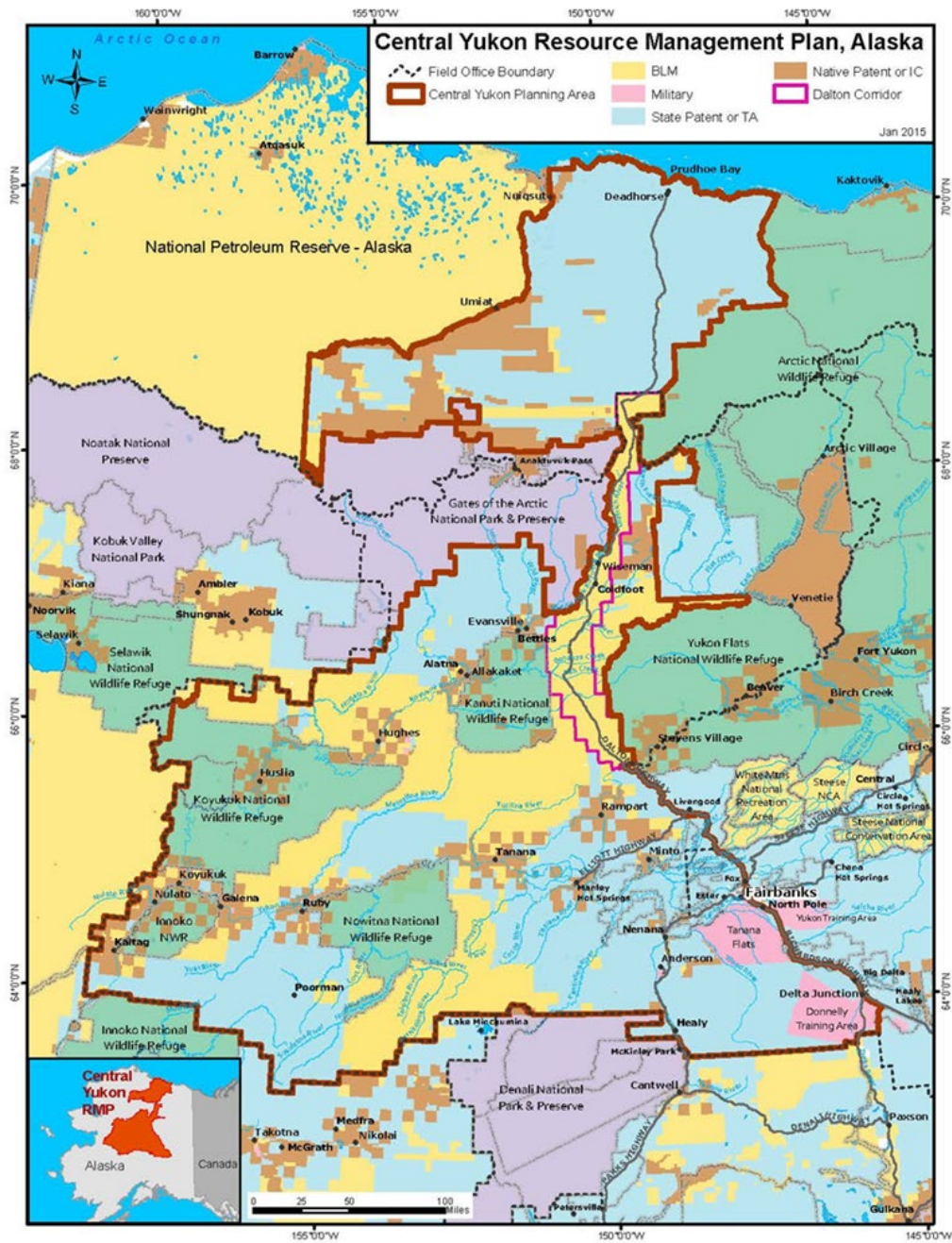




Central Yukon RMP

Planning Area:
Approx. 57 Million
acres

BLM-managed
Lands: Approx.
13.1 Million acres





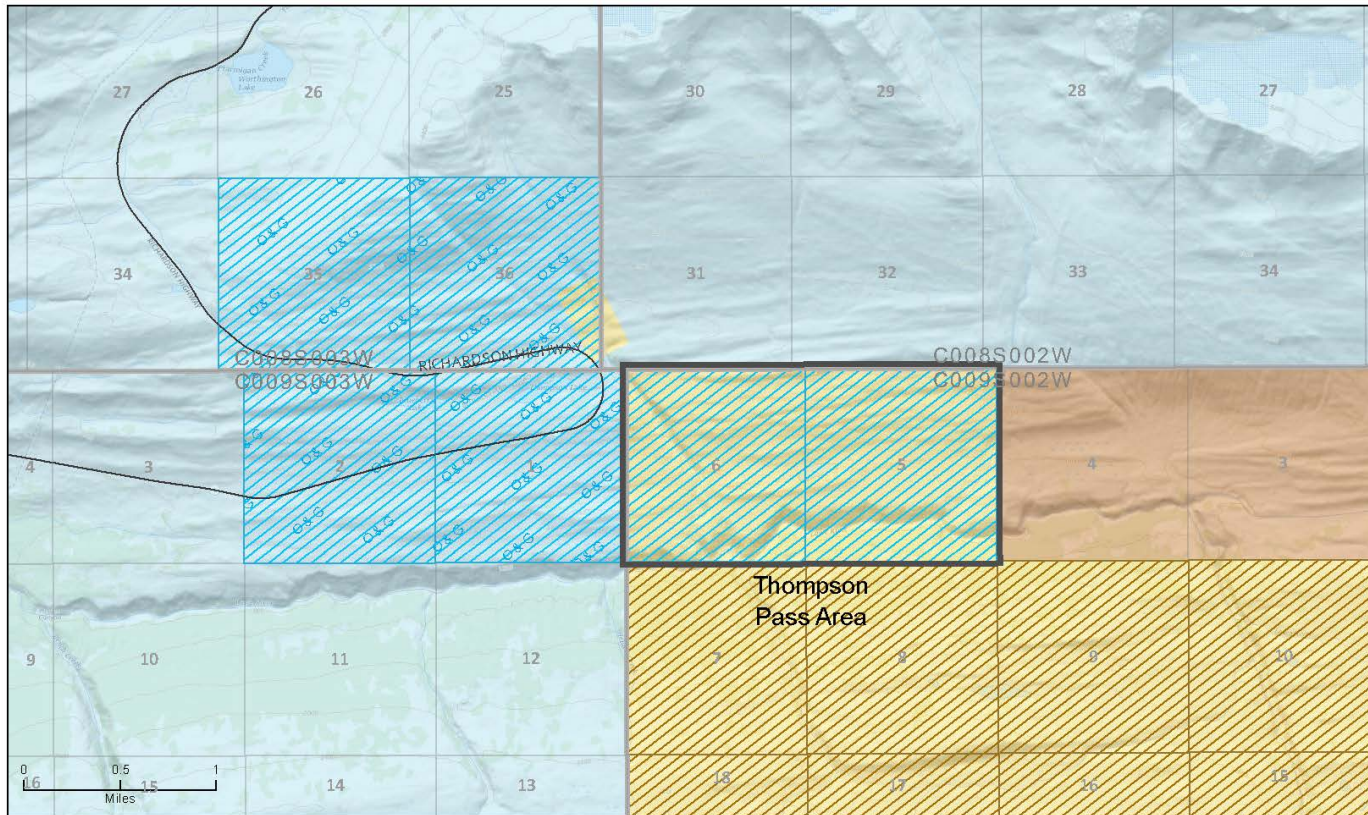
East Alaska RMP Amendment

East Alaska RMP Amendment

Thompson Pass Area - Land Administration



U.S. DEPARTMENT OF THE INTERIOR | BUREAU OF LAND MANAGEMENT | ALASKA | GLENNALLEN FIELD OFFICE



Administered Lands

- Bureau of Land Management
- State
- Native Lands

- State Selection - Surface
- State Selection - Oil & Gas reserves
- Native Selected

- Land Exchange Area
- Section
- Township

Service Layer Credits: USGS The National Map; National Boundaries Dataset, 3D Elevation Program, Geographic Names Information System, National Hydrography Dataset, National Land Cover Database, National Structures Dataset, and National Transportation Dataset; USGS Global Ecosystems; U.S. Census Bureau; TIGER/Line data; USF's Road Data; Natural Earth Data; U.S. Department of State Humanitarian Information Unit; and NOAA National Center for Environmental Information, U.S. Coastal Relief Model. Data refreshed May, 2020.

Disclaimer: No warranty is made by the Bureau of Land Management as to the accuracy, reliability, or completeness of these data for individual or aggregate use with other data. Original data were compiled from various sources. This information may not meet National Map Accuracy Standards. This product was developed through digital means and may be updated without notification. The information displayed on this map should be used for graphic display only. For official land status information, refer to Cadastral Survey Plans, Master Title Plans, and land status case files.





U.S. Department of the Interior
Bureau of Land Management

Questions ?