

Trees



Red alder
Alnus rubra
Up to 75 feet, deciduous, open and damp habitats.
Look for: Scalloped leaves, catkins, white gray bark.

2007, Neil Kramer

Big leaf maple
Acer macrophyllum
Up to 75 feet, deciduous, open and damp habitats.
Look for: Glossy dissected leaves, scaly dark brown bark.



2015, Christopher Christie



Sitka willow
Salix sitchensis
Up to 75 feet, deciduous, open and damp habitats.
Look for: Soft white velvet on the underside of the leaves.

2007, Toni Corelli

Tanoak
Notholithocarpus densiflorus
Up to 100 feet, evergreen, all forest habitats.
Look for: Acorns with cup-like cap, lower surface of leaves wooly.



2005, Bon Terra Consulting



Redwood
Sequoia sempervirens
Over 300 feet, evergreen, dominant of mature forests.
Look for: Soft brown-red bark, flat needles.

2001, Charles Webber



Douglas-fir
Pseudotsuga menziesii
Over 250 feet, evergreen, coniferous forests.
Look for: Cones (pictured), bottle brush sprays of soft needles.

2007, Neil Kramer

Grand fir
Abies grandis
Up to 200 feet, evergreen, coniferous forests.
Look for: Spray of flat needles with notched tips, upper needle surface green.



Conifersoftheworld.com



Sitka spruce
Picea sitchensis
Up to 200 feet, evergreen, coniferous forests.
Look for: Cones (pictured), short stiff and sharp needles.

2002, Gerald and Buff Corsi

Western hemlock
Tsuga heterophylla
Up to 200 feet, evergreen, coniferous forests.
Look for: Cones (pictured), soft needles, droopy branches.



BLM Photo



Western red cedar
Thuja plicata
Up to 200 feet, evergreen, coniferous forests.
Look for: Small, dime sized cones, flat sprays of leaves.

2008, Timothy Ives

Headwaters Flora History

Take a stroll along the Elk River Trail through a deciduous riparian forest community featuring red alder, big leaf maple, and Sitka willow. As the trail departs from the rivers' edge, view tall second and third growth redwood forest reaching for the sky, while dense understory shrubs, ferns and herbs grow in the dappled light below.

Headwaters Forest Reserve is home to approximately 3,000 acres of old-growth redwood forest, a remaining refuge for some of the most rare, majestic forest plants in the world. This ancient forest has grown here for millions of years. Today, it includes towering redwoods over 2,000 years old, and reaching heights over 300 feet.

For Further Information:
Bureau of Land Management
Arcata Field Office
1695 Heindon Road
Arcata, CA 95521
707-825-2300

www.blm.gov/crlm

BLM/CA/GI-2016/011+8600

Please recycle after use

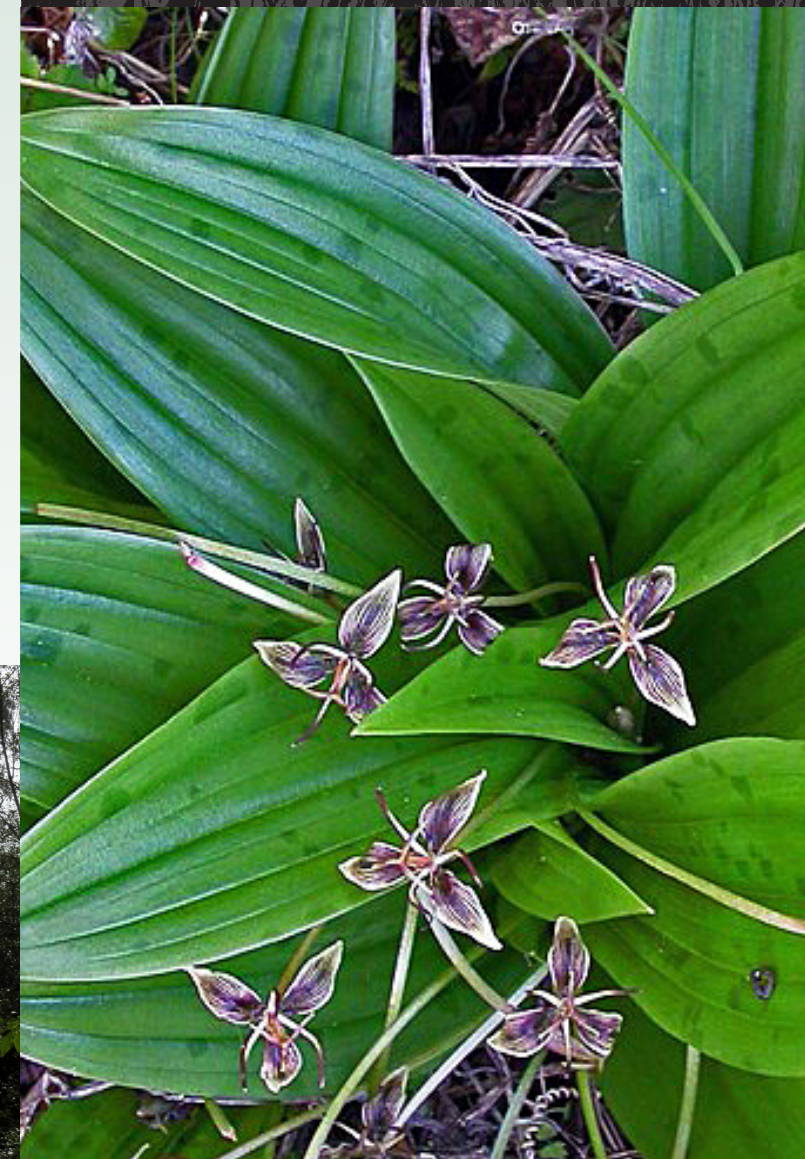


NATIONAL CONSERVATION LANDS

Headwaters

Forest Reserve

Common Plants



Ferns

Deer fern

Blechnum spicant

Up to 1 foot, evergreen, damp habitats.

Look for: Smaller, stiffer fronds, lower to the ground.



2006, Charles E. Jones



BLM Photo

Sword fern

Polystichum munitum

Up to 4 feet, evergreen, common in all habitats.

Look for: Larger fronds, most commonly seen fern.

Five fingered fern

Adiantum aleuticum

Up to 1 foot, evergreen, found on damp banks.

Look for: Smaller, drooping fronds, thin leaves.



2002, Gerald and Buff Corsi



2007, Louis M. Landry

Lady fern

Athyrium filix-femina

Up to 8 feet, dies back in the fall, common in all habitats.

Look for: Single frond on tall stalks.



2002, Tony Morosco

Giant horsetail

Equisetum telmateia

Up to 3 to 5 feet, evergreen, open and damp habitats.

Look for: Unique stem and leaf appearance.

Evergreen huckleberry

Vaccinium ovatum

Up to 10 feet, evergreen.

Look for: Fingertip sized leaves, dark blue-black berries.



2007, Lynn Watson



BLM Photo

Red huckleberry

Vaccinium parvifolium

Up to 10 feet, evergreen, open and forest habitats.

Look for: Alternative leaves, red-orange berries.

Oso berry

Oemleria cerasiformis

Up to 20 feet, deciduous, open and forest habitats.

Look for: Hanging white flowers in the spring, elliptical leaves.



BLM Photo



2008, Keir Morse

Cascara

Frangula purshiana

Up to 36 feet, deciduous, open and damp habitats.

Look for: Long straight stems, black berries, purplish stems.



BLM Photo

Blood currant

Ribes sanguineum

Up to 12 feet, deciduous, open and damp habitats.

Look for: Five lobed leaves, hanging pink flowers, bluish black berries in late summer.

Shrubs and Herbs

California blackberry

Rubus ursinus

Up to 10 feet, evergreen, open and disturbed habitats.

Look for: Brambles with many slender and straight prickles on stems, fingertip sized, black berries.



2005, Bon Terra Consulting



2005, Bon Terra Consulting

Himalayan blackberry

Rubus armeniacus

Up to 10 feet, evergreen. Open and disturbed habitats, invasive and not native.

Look for: Robust stems and wide based, curved prickles.



1995, Saint Mary's College of CA

Queen Anne's lace

Daucus carota

Up to 4 feet, dies back in the fall, open and disturbed habitats.

Look for: Large white flower head with wispy leaves, not native.



2009, John Wall

Stinging nettle

Urtica dioica

Up to 8 feet, dies back in fall. Open and damp habitats.

Look for: Fuzzy, heart-shaped, opposite leaves. Do not touch! Leaves have stinging hairs.



BLM Photo

Salal

Gaultheria shallon

Up to 3 feet, evergreen, open to forest habitats.

Look for: White, urn shaped flowers, leathery green leaves, purple berries.

Wild ginger

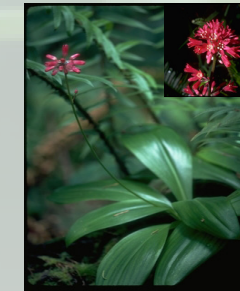
Asarum caudatum

Up to 1/2 foot, evergreen, shady forest habitats.

Look for: Heart-shaped leaves, three parted, wine colored flower.



BLM Photo



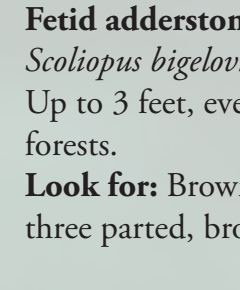
BLM Photo

Red clintonia

Clintonia andrewsiana

Up to 2 feet, evergreen, mature forests.

Look for: Waxy, rounded leaves, pink to rose purple flowers.



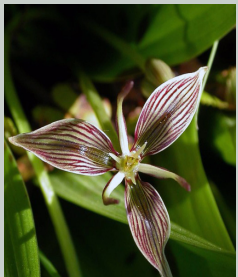
BLM Photo

Fetid adderstongue

Scoliopus bigelovii

Up to 3 feet, evergreen, mature forests.

Look for: Brown spotted leaves, three parted, brown striped flower.



BLM Photo

Sweet coltsfoot

Petasites frigidus var: palmatus

Up to 4 feet, damp habitats.

Look for: Flowering stalks emerging in the spring and large palmate leaves.



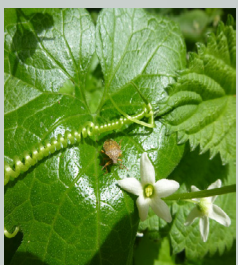
BLM Photo

Wild cucumber

Marah oreganus

Climbing vine, open to forest habitats.

Look for: Vines climbing in trees, round, green fruit with prickles.



BLM Photo