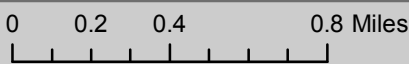
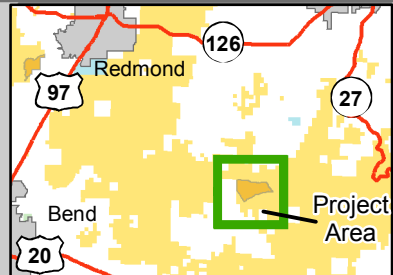
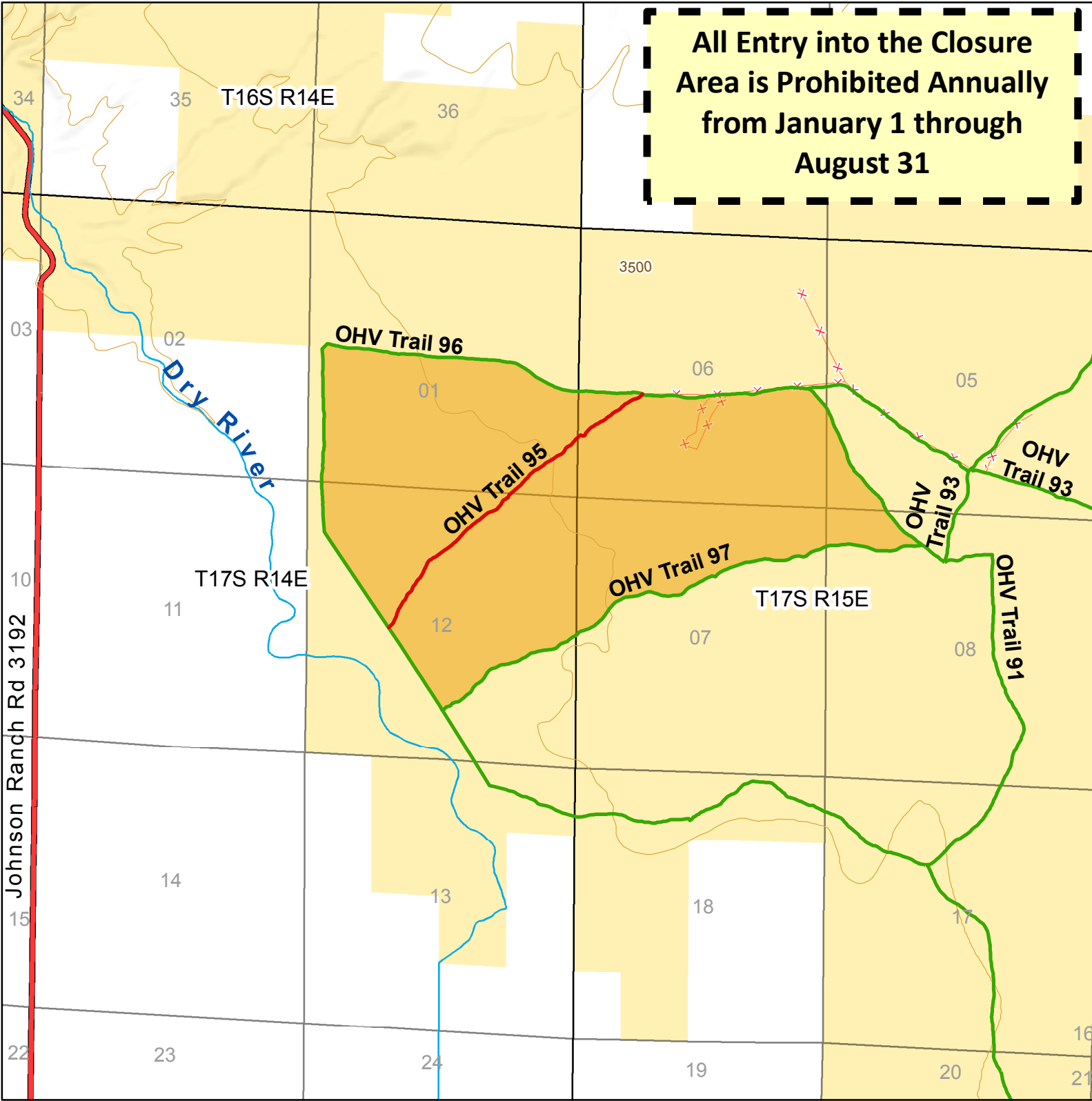


Millican Plateau

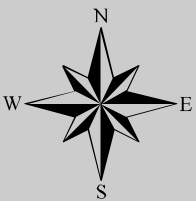
Seasonal Wildlife Closure Area (January 1 - August 31)



All Entry into the Closure Area is Prohibited Annually from January 1 through August 31



U.S. Department of the Interior
Bureau of Land Management
Prineville District Office



- Open Seasonally
- Open Year-round
- Seasonal Wildlife Closure Areas
- x Fences
- Bureau of Land Management
- Private/Unknown

No warranty is made by the Bureau of Land Management as to the accuracy, reliability, or completeness of these data for individual or aggregate use with other data. Original data were compiled from various sources and may be updated without notification.