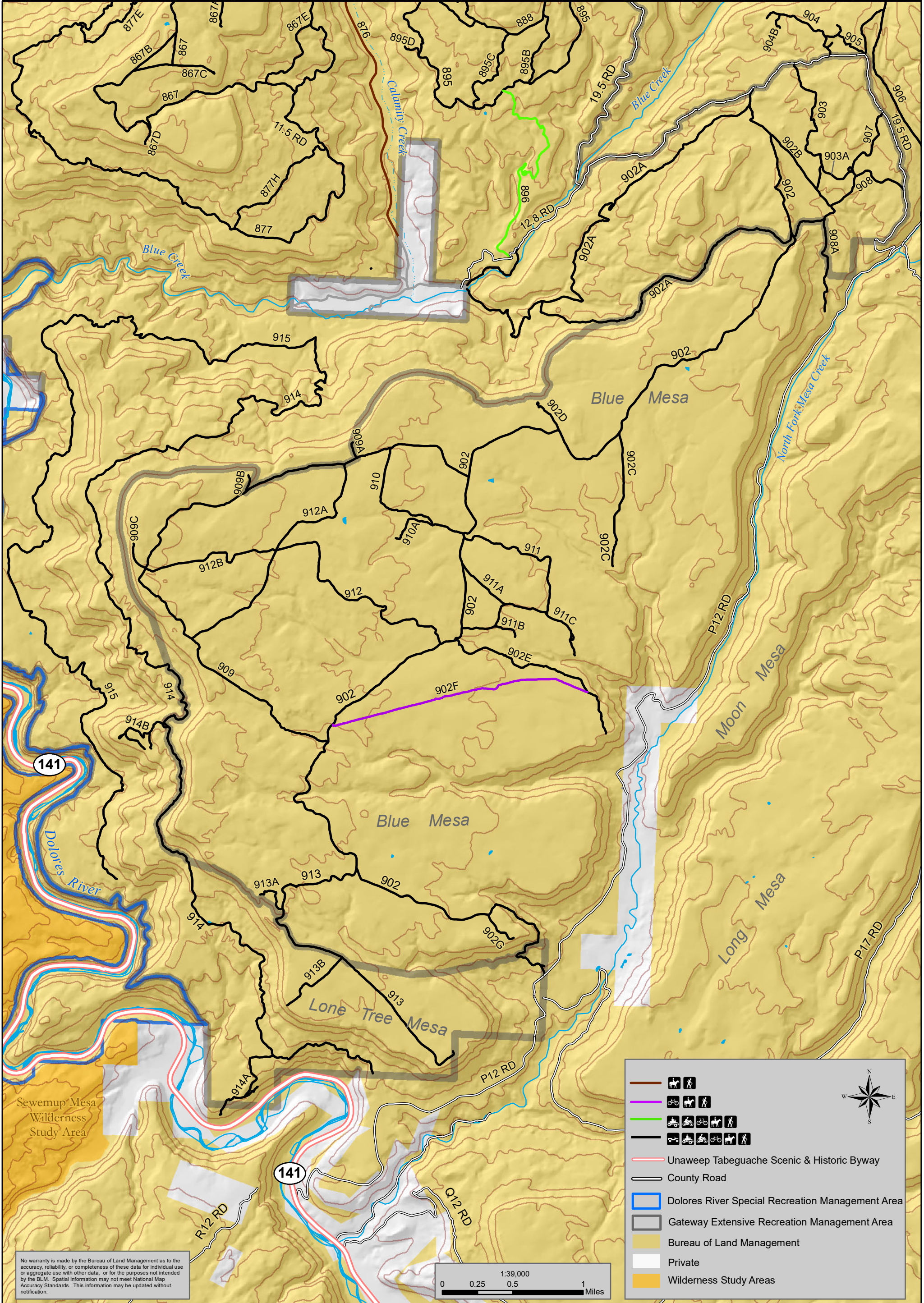




**Gateway Extensive Recreation Management Area - Blue Mesa Map**



No warranty is made by the Bureau of Land Management as to the accuracy, reliability, or completeness of these data for individual use or aggregate use with other data, or for the purposes not intended by the BLM. Spatial information may not meet National Map Accuracy Standards. This information may be updated without notification.

1:39,000  
 0 0.25 0.5 1 Miles

	Horseback riding
	Mountain biking
	Hiking
	Horseback riding and mountain biking
	Horseback riding, mountain biking, and hiking
	Horseback riding, mountain biking, and hiking
	Unaweep Tabeguache Scenic & Historic Byway
	County Road
	Dolores River Special Recreation Management Area
	Gateway Extensive Recreation Management Area
	Bureau of Land Management
	Private
	Wilderness Study Areas