

# Determination of NEPA Adequacy (DNA) Worksheet

## U.S. Department of the Interior Bureau of Land Management (BLM)

---

OFFICE: Ely District

TRACKING NUMBER: DOI-BLM-NV-L000-2018-0001-DNA

PROPOSED ACTION TITLE/TYPE: September 2018 Competitive Oil and Gas Lease Sale

LOCATION/LEGAL DESCRIPTION: See Attachment A

LEASE SALE STIPULATIONS: See Attachment B

### A. Description of the Proposed Action and any applicable mitigation measures

A competitive oil and gas lease sale of certain public land within the Ely District by the U.S. Department of the Interior, Bureau of Land Management, Nevada State Office, pursuant to 43 CFR 3100; scheduled for September 11, 2018.

### B. Land Use Plan (LUP) Conformance

LUP Name: *Ely District Record of Decision and Approved Resource Management Plan, as amended*  
Date Approved: August 2008

The Proposed Action is in conformance with the Goals and Objectives of the Ely District Record of Decision and Approved Resource Management Plan (BLM 2007, the Ely RMP), as amended, which are to: “provide for the responsible development of mineral resources to meet local, regional, and national needs, while providing for the protection of other resources and uses (page 92).” The RMP also states in part, “It is BLM policy to apply the least restrictive constraint to meet the resource protection objective (page 97).” In addition, “Timing limitations indicate that a leased area generally is open to development activities except during a specified period of time to protect identified resource values such as wildlife (page 92).” The stipulations for Fluid Minerals Lease Notices in Appendix A, Section 2 of the Ely RMP were updated February 11, 2015 under a maintenance action.

The 2015 Nevada and Northeastern California Greater Sage-Grouse Approved Resource Management Plan Amendment (GRSG Plan Amendment) amended the Ely RMP to address Greater Sage-Grouse. Under the GRSG Plan Amendment, mapped habitat for Greater Sage-Grouse (GRSG) is designated as Priority Habitat Management Area (PHMA), General Habitat Management Area (GHMA), or Other Habitat Management Area (OHMA). The Proposed Action conforms with applicable sections of the GRSG Plan Amendment.

GRSG Plan Amendment Section 2.2, Management Decisions (MD) for Mineral Resources (MR), Unleased Fluid Minerals include the following MD applicable to oil and gas lease sales in PHMA and GHMA (others apply to SFA, geothermal, etc.):

- MD MR 1: Review Objective SSS 4 and apply MDs Special Status Species (SSS)1 through SSS 4 when reviewing and analyzing projects and activities proposed in GRSG habitat (these would be applied at the time of project-specific analysis).
- MD MR 3: In PHMAs outside of SFAs, no waivers or modifications to an oil and gas lease no-surface occupancy stipulation will be granted. In PHMAs, the Authorized Officer may grant an

- exception to an oil and gas lease no-surface-occupancy stipulation only where the proposed action:
  - i. Will not have direct, indirect, or cumulative effects on GRSG or its habitat; or,
  - ii. Is proposed to be undertaken as an alternative to a similar action occurring on a nearby parcel, and will provide a clear conservation gain to GRSG.
- MD MR5: In GHMAs, manage oil and gas and geothermal fluid minerals with moderate constraints, timing limitations and controlled surface use stipulations.

GRSG Plan Amendment Appendix G, Fluid Mineral Stipulations, Waivers, Modifications, and Exceptions, specifies the stipulations to apply to each habitat type and describes conditions under which exceptions, modifications, or waivers may or may not be applied. The stipulations have been applied to each part of a parcel with GRSG habitat, down to the 40-acre quarter-quarter of a section, using the applicable level of protection.

**C. Identify applicable National Environmental Policy Act (NEPA) documents and other related documents that cover the proposed action.**

Ely Proposed Resource Management Plan/Final Environmental Impact Statement; Record of Decision signed on August 20, 2008.

December 2013 Competitive Oil and Gas Lease Sale DOI-BLM-NV-L000-2013-0004-EA; Decision Record Signed on August 22, 2013.

December 2014 Competitive Oil and Gas Lease Sale DOI-BLM-NV-L000-2014-002-EA; Decision Record Signed on September 5, 2014.

Nevada and Northeastern California Greater Sag-Grouse Proposed Land Use Plan Amendment and Final Environmental Impact Statement; Record of Decision Signed June 2015.

December 2017 Competitive Oil and Gas Lease Sale DOI-BLM-NV-L030-2017-0021-EA; Decision Record signed on December 11, 2017.

**D. NEPA Adequacy Criteria**

- 1. Is the new proposed action a feature of, or essentially similar to, an alternative analyzed in the existing NEPA document(s)? Is the project within the same analysis area, or if the project location is different, are the geographic and resource conditions sufficiently similar to those analyzed in the existing NEPA document(s)? If there are differences, can you explain why they are not substantial?**

The September 2018 proposed oil and gas lease parcels are adjacent to parcels previously analyzed in the 2013, 2014 and 2017 Oil and Gas Lease Sale Environmental Assessments (EA) prepared by the Ely District. The geographic and resource conditions are similar to those analyzed in the existing NEPA documents. The table below lists the valleys and ranges where the 2018 proposed parcels are located and when parcels in those locations were last analyzed in past documents. Maps showing the 2018 September proposed parcels and parcels analyzed in the reference EA are attached to this document.

Locations of 2018 Parcels	Analyzed in Past EAs			Locations of 2018 Parcels	Analyzed in Past EAs		
	2017	2014	2013		2017	2014	2013
<b>Valleys</b>				<b>Ranges</b>			
Newark	x		x	Delamar		x	
Little Smokey	x			Diamond	x		
Long			x	Maverick Springs			x
Railroad	x	x	x				
Delamar		x					

**2. Is the range of alternatives analyzed in the existing NEPA document(s) appropriate with respect to the new proposed action, given current environmental concerns, interests, and resource values?**

The alternatives analyzed in the existing 2013, 2014, and 2015 Lease Sale EAs were the Proposed Action and the No Action Alternative. Under the No Action Alternative, the BLM would not offer any parcels for lease. Surface management would remain the same and ongoing oil and gas development would continue on surrounding leased federal, private, and state lands. The No Action Alternative is appropriate in respect to the new Proposed Action given the current environmental concerns, interest and resource values.

**3. Is the existing analysis valid in light of any new information or circumstances (such as rangeland health standard assessment, recent endangered species listings, and updated lists of BLM-sensitive species)? Can you reasonably conclude that new information and new circumstances would not substantially change the analysis of the new proposed action?**

On August 21, 2017 the Ely District BLM requested reinitiation of formal consultation with the Fish and Wildlife Service (FWS) of the District’s Programmatic Biological Opinion (PBO) completed in 2008 as part of the Ely RMP. Formal consultation was requested to add species that had been listed and documented within the District since the RMP was completed and to include updated information and effects analysis for oil and gas development and other programs. The BLM also requested concurrence for 7 listed species in various programs that were not included in the 2008 PBO. As a result of formal consultation the FWS determined that the actions analyzed “may affect, but are not likely to adversely affect, the Mojave desert tortoise, southwestern willow flycatcher, yellow billed cuckoo, Railroad Valley springfish, White River spinedace, White River springfish, Hiko White River springfish and Pahranaagat roundtail chub.” As a result no changes were made to the Ely RMP or the stipulations found in Appendix A, Section 2.

No new information or circumstance would substantially change the analysis completed in the 2013, 2014 or 2017 Lease Sale EAs. Species that may potentially be impacted by the Proposed Action present on the updated 2017 BLM Special Status Species list were analyzed in the past Lease Sale EAs. The analysis for Special Status Species can be found on pages 40-42 and 63-77 of the 2013 EA, pages 36 and 61-63 of the 2014 EA and pages 44-50 of the 2017 EA.

Oil and Gas stipulations from the Ely RMP (Appendix A, Section 2) and the 2015 GRSG Plan Amendment Appendix G would be applied to mitigate disturbance to Special Status Species including Greater Sage-Grouse. The stipulations would be applied according to the current status and condition of any given parcel at the time of lease sale, as identified and recommended by resource specialists familiar with the current information and circumstances.

**4. Are the direct, indirect, and cumulative effects that would result from implementation of the new proposed action similar (both quantitatively and qualitatively) to those analyzed in the existing NEPA document?**

At this stage in the Oil and Gas leasing process no direct impacts to the environment will occur. The lease confers upon the holder the right to use as much of the land as is necessary to explore for, drill for, mine, extract, remove and dispose of all the oil and gas resources in a leasehold, subject to stipulations, restrictions, and reasonable measures to minimize adverse impacts to other resources. The right to use the land under a lease does not authorize the leaseholder to create any surface disturbance or cause any impact to the environment. Exploration and/or development proposals would be further analyzed in an EA for direct, indirect and cumulative effects at the time the proposals are submitted with an Application for Permit to Drill (APD). Any issued oil and gas leases located on BLM-administered public land will be subject to the applicable stipulations and best management practices (BMPs) established by the BLM.

The 2013, 2014 and 2017 EAs analyze the indirect, future potential effects of lease sale, and potential cumulative effects, in terms of a reasonable future development (RFD) scenario.

**5. Are the direct and indirect impacts of the current proposed action substantially unchanged from those identified in the existing NEPA document(s)? Does the existing NEPA document sufficiently analyze site-specific impacts related to the current proposed action?**

The Proposed Action does not authorize surface use, subsurface use or disturbance; therefore, there will be no direct impact with this action. Indirect impacts to adjacent parcels under an RFD scenario were previously analyzed in the 2013, 2014 and 2017 Lease Sale EAs. Site specific analysis of indirect impacts can be found on pages 48-82 of the 2013 EA, pages 55-70 of the 2014 EA and pages 21-69 of the 2017 EA. In order for a lessee to exercise their rights to explore or develop a lease, an APD must be submitted and approved. Additional NEPA analysis is prepared for these site specific plans. Site-specific mitigation measures and BMPs (Appendix A and the Gold Book) would be attached as Conditions of Approval (COAs) for each proposed activity. Any proposed APD would be analyzed under additional project and site-specific analysis per the NEPA. The level of further NEPA analysis for an APD would depend upon the results of scoping and the particulars of the proposed action.

**6. Can you conclude without additional analysis or information that the cumulative impacts that would result from implementation of the current proposed action are substantially unchanged from those analyzed in the existing NEPA document(s)?**

The combined Cumulative Effects Study Areas analyzed in the 2013, 2014 and 2017 Lease Sale EAs encompass the currently proposed parcels. The Proposed Action for this DNA and the past Lease Sale EAs are the same, to offer parcels for lease. The 2013, 2014 and 2017 EAs analyze the indirect, future potential effects of lease sale, and potential cumulative effects, in terms of an RFD scenario. There are no cumulative impacts from leasing. Incremental cumulative impacts from potential development would be analyzed during the application review process which requires further environmental analysis.

**7. Are the public involvement and interagency review associated with existing NEPA document(s) adequately for the current proposed action?**

Public involvement for the RMP and the three Lease Sale EAs was adequate for the current Proposed Action. The RMP analyzed areas available within the Ely District open to oil and gas leasing. The Proposed Actions for this DNA and the 2013, 2014, 2017 Lease EAs are the same.

Public participation for the RMP began with the publication of the Federal Register Notice of Intent. With this Notice of Intent, individuals and organizations were invited to submit comments in writing to the BLM and cooperating agencies were invited to participate in the planning process. Several government agencies and tribes agreed to serve as cooperating agencies and had varying levels of involvement in the development of the Draft RMP/EIS. These agencies and tribes continued to be involved through preparation of the Proposed RMP/Final EIS. A full list of cooperating agencies can be found on page 7 of

the RMP. Six public scoping meetings were held in March and April 2003. A Notice of Availability was published in the Federal Register (Vol. 72 No. 230, pages 67748-67750, Friday, November 30, 2007), announcing the availability of the Ely Proposed RMP/Final EIS. This began a 30-day protest period that ended December 30, 2007, and a 60-day governor's consistency review in accordance with planning regulations at 43 Code of Federal Regulations Part 1610.3-2(e), which ended on January 29, 2008. Copies of the Proposed Plan were mailed to over 1,200 agencies, organizations, and individuals.

During the preparation of the 2013 Lease Sale EA a project notice was sent to other federal agencies, Native American Tribes, the Nevada State Clearinghouse, interested publics, and grazing permittees on June 28, 2013. The preliminary EA was placed on the BLM NEPA Register website for 30 days to receive public comments until July 29, 2013. The BLM received approximately 30 external comments from individuals and government agencies on the proposed action during the 30-day comment period (2013 EA, Page 10).

During the preparation of the 2014 Lease Sale EA external scoping included a general press release notifying the public of the proposed action, a web based announcement and the means of providing input from May 6–27, 2014. Managers made presentations describing the proposed action to the White Pine Board of County Commissioners and the White Pine County Public Land Use Advisory Committee (PLUAC) on May 13th. The Confederate Tribes of the Goshute Indian Reservation and the Duckwater Shoshone Tribe of the Duckwater Reservation were consulted. The Ely District Manager presented this proposed action to the Lincoln County Board of Commissioners on June 2nd. On June 11th the preliminary EA was placed on the BLM NEPA Register website for 30 days to receive public comments (2014 EA, Page 10).

During preparation of the 2017 Lease Sale EA, the public was notified of the proposed action by posting the project on the Ely District Office and BLM NEPA Register websites on May 4, 2015 and publishing a press release on the same date. The press release announced a public scoping period that concluded on May 22, 2015. A public comment period for the preliminary EA was offered between June 22 and July 24, 2015. (2017 EA, Page 3). The Ely District initiated Native American consultation for the December 2017 Oil and Gas Lease Sale on July 17, 2017.

### **BLM Staff Consulted**

Alicia Hankins-Land Law Examiner

Andy Gault-Hydrologist

Ben Noyes- Wild Horse and Burro Specialist

Chris McVicars-Noxious Weed

Concetta Brown-Planning and Environmental Coordinator and Project Lead

Elizabeth Seymour-Native American Coordinator

Nancy Herms-Wildlife Biologist

Ian Collier-Rangeland Management Specialist

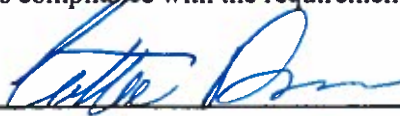
Jessica Phelps-Cultural Resources Specialist

John Miller-Recreation Specialist

Stacy Holt-Environmental Protection Specialist (Minerals)

**Conclusion**

Based on the review documented above, I conclude that this proposal conforms to the applicable land use plan as amended, and that the NEPA documentation fully covers the proposed action and constitutes BLM's compliance with the requirements of the NEPA.

  
\_\_\_\_\_  
Signature of Project Lead

  
\_\_\_\_\_  
Signature of NEPA Coordinator

  
\_\_\_\_\_  
Signature of Authorized Officer

6-22-18  
\_\_\_\_\_  
Date

**Note:** The signed Conclusion on this Worksheet is part of an interim step in the BLM's internal decision process and does not constitute an appealable decision. However, the lease, permit, or other authorization based on this DNA is subject to protest or appeal under 43 CFR Part 4 and the program-specific regulations.

**References**

BLM and USDA, Forest Service, 2006. Surface Operating Standards and Guidelines for Oil and Gas Exploration and Development, The Gold Book: Fourth Edition.

BLM and USDA Forest Service. 2015. Nevada and Northeastern California Greater Sage-Grouse Proposed Land Use Plan Amendment and Final Environmental Impact Statement. June 2015.

BLM 2007. Ely Proposed Resource Management Plan/Final Environmental Impact Statement. November, 2007. USDI-BLM. Ely District Office.

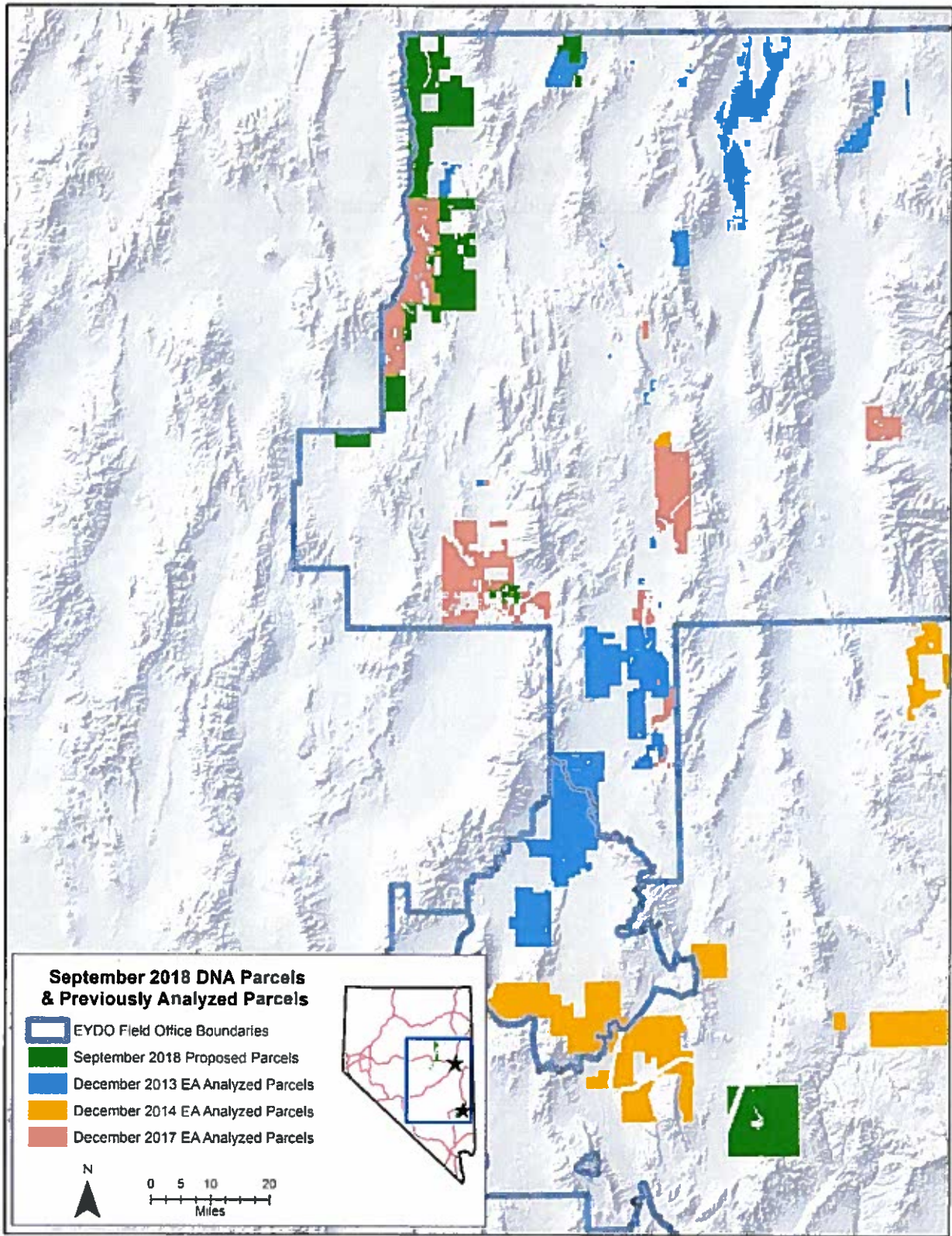
BLM 2008. Ely District Record of Decision and Approved Resource Management Plan. United States Department of the Interior, Bureau of Land Management, Ely District: Ely, Nevada. August 2008.

DOI-BLM-NV-L000-2013-0004-EA December 2013 Competitive Oil and Gas Lease Sale. United States Department of the Interior, Bureau of Land Management, Ely District: Ely, Nevada. August 2013.

DOI-BLM-NV-L000-2014-002-EA December 2014 Competitive Oil and Gas Lease Sale. United States Department of the Interior, Bureau of Land Management, Ely District: Ely, Nevada. September 2014.

DOI-BLM-NV-L030-2017-0021-EA December 2017 Competitive Oil and Gas Lease Sale. United States Department of the Interior, Bureau of Land Management, Ely District: Ely, Nevada. December 2017.

USDI BLM Nevada and Northeastern California Greater Sage-Grouse Resource Management Plan Amendment and Great Basin Region Record of Decision. September 2015.



**Attachment A**  
Location and Legal Land Descriptions



**NV-18-09-001 2202.850 Acres**  
T.0150N, R.0530E, 21 MDM, NV  
Sec. 019 LOTS 2-4;  
019 S2NE, SENW, E2SW, SE;  
020 S2NE, S2NW, S2;  
029 ALL;  
030 LOTS 1-4;  
030 E2, E2NW, E2SW;  
Nye County  
Ely DO  
OHMA

**NV-18-09-002 2200.000 Acres**  
T.0150N, R.0530E, 21 MDM, NV  
Sec. 021 S2NE, S2NW, S2;  
022 S2NE, S2NW, S2;  
027 ALL;  
028 E2, W2NW, SENW, SW;  
Nye County  
Ely DO

**NV-18-09-003 2200.000 Acres**  
T.0150N, R.0530E, 21 MDM, NV  
Sec. 023 SENE, S2NW, S2;  
024 S2NE, S2NW, S2;  
025 ALL;  
026 ALL;  
Nye County  
Ely DO  
OHMA

**NV-18-09-004 1899.380 Acres**  
T.0150N, R.0530E, 21 MDM, NV  
Sec. 031 LOTS 1-4;  
031 E2, E2NW, E2SW;  
032 ALL;  
033 ALL;  
Nye County  
Ely DO  
PHMA, OHMA

**NV-18-09-005 1920.000 Acres**  
T.0150N, R.0530E, 21 MDM, NV  
Sec. 034 ALL;  
035 ALL;  
036 ALL;  
Nye County  
Ely DO  
OHMA

**NV-18-09-006 1904.480 Acres**  
T.0160N, R.0540E, 21 MDM, NV  
Sec. 002 LOTS 1-4;  
002 S2NE, S2NW, S2;  
012 PROT ALL;  
001 PROT ALL;  
White Pine County  
Ely DO  
PHMA, GHMA, OHMA

**NV-18-09-007 1923.580 Acres**  
T.0160N, R.0540E, 21 MDM, NV  
Sec. 003 LOTS 1-4;  
003 S2NE, S2NW, S2;  
010 ALL;  
011 ALL;  
White Pine County  
Ely DO  
OHMA

**NV-18-09-008 1282.880 Acres**  
T.0160N, R.0540E, 21 MDM, NV  
Sec. 004 LOTS 1-4;  
004 S2NE, S2NW, S2;  
009 ALL;  
White Pine County  
Ely DO

**NV-18-09-009 2560.000 Acres**  
T.0160N, R.0540E, 21 MDM, NV  
Sec. 013 PROT ALL;  
014 W2;  
014 PROT E2;  
023 W2;  
023 PROT E2;  
024 PROT ALL;  
White Pine County  
Ely DO  
OHMA

**NV-18-09-010 2560.000 Acres**  
T.0160N, R.0540E, 21 MDM, NV  
Sec. 015 ALL;  
016 ALL;  
021 ALL;  
022 ALL;  
White Pine County  
Ely DO  
OHMA

**NV-18-09-011 2558.000 Acres**  
T.0160N, R.0540E, 21 MDM, NV  
Sec. 025 PROT ALL;  
026 W2;  
026 PROT E2;  
035 W2;  
035 PROT E2;  
036 PROT ALL;  
White Pine County  
Ely DO  
GHMA, OHMA

**NV-18-09-012 2560.000 Acres**  
T.0160N, R.0540E, 21 MDM, NV  
Sec. 027 ALL;  
028 ALL;  
033 ALL;  
034 ALL;  
White Pine County  
Ely DO  
OHMA

**NV-18-09-013 1925.010 Acres**

T.0250N, R.0540E, 21 MDM, NV  
Sec. 001 LOTS 1-2;  
001 S2NE,SE;  
012 E2;  
013 E2;  
024 E2;  
025 E2;  
036 E2;

Eureka County  
Ely DO  
GHMA, OHMA

**NV-18-09-014 2237.600 Acres**

T.0180N, R.0550E, 21 MDM, NV  
Sec. 001 LOTS 3-4;  
001 S2NW,SW;  
001 PROT E2;  
012 W2;  
012 PROT E2;  
013 W2;  
013 PROT E2;  
014 E2;

White Pine County  
Ely DO  
PHMA, GHMA, OHMA

**NV-18-09-015 1592.800 Acres**

T.0180N, R.0550E, 21 MDM, NV  
Sec. 002 LOTS 1-4;  
002 S2NE,S2NW,S2;  
003 LOTS 1-4;  
003 S2NE,S2NW,S2;  
011 E2;

White Pine County  
Ely DO  
GHMA, OHMA

**NV-18-09-016 2015.040 Acres**

T.0180N, R.0550E, 21 MDM, NV  
Sec. 005 LOTS 1-4;  
005 S2NE,S2NW,S2;  
006 LOTS 1-3,6,7;  
006 S2NE,SESW,E2SE;  
007 LOTS 1-4;  
007 S2NE,E2NW,NESW,SE;  
008 E2,SW;

White Pine County  
Ely DO  
PHMA, GHMA

**NV-18-09-017 1890.120 Acres**

T.0180N, R.0550E, 21 MDM, NV  
Sec. 017 ALL;  
018 LOTS 1-4;  
018 E2 EXCL MS37;E2NW,E2SW;  
019 LOTS 1-4;  
019 E2,E2NW,E2SW;

White Pine County  
Ely DO  
PHMA, GHMA, OHMA

**NV-18-09-018 1253.300 Acres**

T.0180N, R.0550E, 21 MDM, NV  
Sec. 030 LOTS 1-4 EXCEPT ME5951;  
030 E2,E2NW,E2SW;  
031 LOTS 1-4;  
031 E2,E2NW,E2SW;

White Pine County  
Ely DO  
PHMA, GHMA, OHMA

**NV-18-09-019 1920.000 Acres**

T.0190N, R.0550E, 21 MDM, NV  
Sec. 012 ALL;  
013 ALL;  
024 ALL;

White Pine County  
Ely DO

**NV-18-09-020 1273.480 Acres**

T.0200N, R.0550E, 21 MDM, NV  
Sec. 013 LOTS 1-4;  
013 W2NE,W2,W2SE;  
026 ALL;

White Pine County  
Ely DO  
OHMA

**NV-18-09-021 1638.440 Acres**

T.0220N, R.0550E, 21 MDM, NV  
Sec. 002 LOTS 1-4;  
002 SWNE,S2NW,W2SW;  
003 LOTS 1-7;  
003 SWNE,S2NW,SW,W2SE;  
004 LOTS 1-4;  
004 S2NE,S2NW,S2;

White Pine County  
Ely DO  
GHMA, OHMA

**NV-18-09-022 2002.220 Acres**

T.0220N, R.0550E, 21 MDM, NV  
Sec. 008 ALL;  
009 ALL;  
010 LOTS 1-6;  
010 W2NE,E2NW,E2SW,SE;  
011 W2NW;

White Pine County  
Ely DO  
GHMA, OHMA

**NV-18-09-023 1923.360 Acres**

T.0220N, R.0550E, 21 MDM, NV  
Sec. 015 LOTS 1-4;  
015 E2,W2NW,W2SW;  
016 ALL;  
017 ALL;

White Pine County  
Ely DO  
GHMA, OHMA

**NV-18-09-024 1924.480 Acres**

T.0220N, R.0550E, 21 MDM, NV  
Sec. 020 ALL;  
021 ALL;  
022 LOTS 1-4;  
022 E2,W2NW,W2SW;

White Pine County  
Ely DO  
GHMA, OHMA

**NV-18-09-025 1920.000 Acres**

T.0220N, R.0550E, 21 MDM, NV  
Sec. 027 ALL;  
028 ALL;  
029 ALL;

White Pine County  
Ely DO  
GHMA,OHMA

**NV-18-09-026 2160.000 Acres**

T.0220N, R.0550E, 21 MDM, NV  
Sec. 030 SESE;  
031 E2;  
032 ALL;  
033 ALL;  
034 NE,N2NW,SWNW,SW,S2SE;

White Pine County  
Ely DO  
GHMA,OHMA

**NV-18-09-027 2549.870 Acres**

T.0230N, R.0550E, 21 MDM, NV  
Sec. 002 LOTS 1-10;  
002 S2NE,SE;  
003 PROT ALL;  
004 PROT ALL;  
005 PROT ALL;

White Pine and Eureka Counties  
Ely DO  
GHMA, OHMA

**NV-18-09-028 1920.000 Acres**

T.0230N, R.0550E, 21 MDM, NV  
Sec. 008 PROT ALL;  
009 PROT ALL;  
010 PROT ALL;

White Pine and Eureka Counties  
Ely DO  
GHMA, OHMA

**NV-18-09-029 2555.960 Acres**

T.0230N, R.0550E, 21 MDM, NV  
Sec. 011 LOTS 1-8;  
011 E2;  
014 LOTS 1-8;  
014 E2;  
015 PROT ALL;  
016 PROT ALL;

White Pine County  
Ely DO  
GHMA, OHMA

**NV-18-09-030 2560.000 Acres**

T.0230N, R.0550E, 21 MDM, NV  
Sec. 017 PROT ALL;  
020 PROT ALL;  
021 PROT ALL;  
022 PROT ALL;

White Pine County  
Ely DO  
GHMA,OHMA

**NV-18-09-031 1116.020 Acres**

T.0230N, R.0550E, 21 MDM, NV  
Sec. 023 LOTS 1-4;  
023 NE,W2NW,W2SW;  
026 LOTS 1-4;  
026 W2NW,W2SW;  
035 LOTS 1-8;

White Pine County  
Ely DO  
GHMA,OHMA

**NV-18-09-032 1920.000 Acres**

T.0230N, R.0550E, 21 MDM, NV  
Sec. 027 PROT ALL;  
028 PROT ALL;  
029 PROT ALL;

White Pine and Eureka Counties  
Ely DO  
GHMA, OHMA

**NV-18-09-033 1920.000 Acres**

T.0230N, R.0550E, 21 MDM, NV  
Sec. 032 PROT ALL;  
033 PROT ALL;  
034 PROT ALL;

White Pine and Eureka Counties  
Ely DO  
GHMA, OHMA

**NV-18-09-034 1918.870 Acres**

T.0240N, R.0550E, 21 MDM, NV  
Sec. 001 LOTS 1-4;  
001 S2NE,S2NW,S2;  
002 LOTS 1-4;  
002 S2NE,S2NW,S2;  
003 LOTS 1-10;  
003 S2NE,SE;

White Pine County  
Ely DO  
PHMA,GHMA,OHMA

**NV-18-09-035 2025.93 Acres**

T.0240N, R.0550E, 21 MDM, NV  
Sec. 004 LOTS 1-22;  
004 SW,W2SE;  
005 PROT ALL EXCLUDE MS

MS 2180  
White Pine County  
Ely DO  
PHMA,GHMA

**NV-18-09-036 1971.910 Acres**

T.0240N, R.0550E, 21 MDM, NV  
Sec. 008 PROT ALL;  
009 LOTS 1-4;  
009 W2NE,W2,W2SE;  
016 LOTS 1-4;  
016 W2NE,W2,W2SE;

White Pine County  
Ely DO  
PHMA, GHMA, OHMA

**NV-18-09-037 1943.060 Acres**

T.0240N, R.0550E, 21 MDM, NV  
Sec. 017 PROT ALL;  
020 PROT ALL;  
021 LOTS 1-4;  
021 W2NE,W2,W2SE;

White Pine County  
Ely DO  
PHMA, GHMA, OHMA

**NV-18-09-038 1920.000 Acres**

T.0240N, R.0550E, 21 MDM, NV  
Sec. 025 ALL;  
026 ALL;  
027 ALL;

White Pine County  
Ely DO  
PHMA, GHMA, OHMA

**NV-18-09-039 1950.030 Acres**

T.0240N, R.0550E, 21 MDM, NV  
Sec. 028 LOTS 1-4;  
028 W2NE,W2,W2SE;  
029 PROT ALL;  
032 PROT ALL;

White Pine County  
Ely DO

**NV-18-09-040 1640.640 Acres**

T.0240N, R.0550E, 21 MDM, NV  
Sec. 033 LOTS 1-4;  
033 W2NE,W2,W2SE;  
034 LOTS 1-8;  
034 N2;

White Pine County  
Ely DO  
GHMA, OHMA

**NV-18-09-041 1985.420 Acres**

T.0240N, R.0550E, 21 MDM, NV  
Sec. 035 LOTS 1-8;  
035 N2;  
036 LOTS 1-8;  
036 N2;

White Pine County  
Ely DO  
PHMA, GHMA, OHMA

**NV-18-09-042 2208.560 Acres**

T.0250N, R.0550E, 21 MDM, NV  
Sec. 001 LOTS 1-4;  
001 S2NE,S2NW,S2;  
002 LOTS 1-4;  
002 S2NE,SENW,NESW,SE;  
011 E2,W2NW,SWSW;  
012 ALL;

White Pine County  
Ely DO  
GHMA

**NV-18-09-043 2510.970 Acres**

T.0250N, R.0550E, 21 MDM, NV  
Sec. 003 LOTS 3,4;  
003 SWNE,S2NW,SW;  
003 W2SE,SESE;  
004 LOTS 1-4;  
004 S2NE,S2NW,S2;  
009 LOTS 1-14;  
009 SW,W2SE;  
010 ALL;

White Pine County  
Ely DO  
GHMA

**NV-18-09-044 2064.040 Acres**

T.0250N, R.0550E, 21 MDM, NV  
Sec. 005 LOTS 1-2;  
005 S2NE;  
005 PROT W2,SE;  
006 PROT ALL;  
007 PROT ALL;  
008 PROT ALL;

White Pine County  
Ely DO  
GHMA, OHMA

**NV-18-09-045 2161.220 Acres**

T.0250N, R.0550E, 21 MDM, NV  
Sec. 013 ALL;  
014 NE,W2NW,W2SW;  
014 N2SE,SESE;  
023 LOTS 1-8;  
023 E2NE;  
024 LOTS 1-8;  
024 N2;

White Pine County  
Ely DO  
GHMA

**NV-18-09-046 2283.920 Acres**

T.0250N, R.0550E, 21 MDM, NV  
Sec. 015 ALL;  
016 LOTS 1-4;  
016 W2NE,W2,W2SE;  
017 PROT ALL;  
018 PROT ALL;

White Pine County  
Ely DO  
GHMA, OHMA

**NV-18-09-047 2274.490 Acres**

T.0250N, R.0550E, 21 MDM, NV  
Sec. 019 PROT ALL;  
020 PROT ALL;  
021 LOTS 1-8;  
021 W2NE,W2,W2SE;  
022 LOTS 1-8;  
022 W2;

White Pine County  
Ely DO

**NV-18-09-048 2254.660 Acres**

T.0250N, R.0550E, 21 MDM, NV  
Sec. 025 LOTS 1-16;  
026 E2NE,W2NW,SE;  
035 E2,NENW,S2NW,SW;  
036 1-8;  
036 W2;

White Pine County  
Ely DO  
PHMA, GHMA

**NV-18-09-049 2344.380 Acres**

T.0250N, R.0550E, 21 MDM, NV  
Sec. 027 LOTS 1-4;  
027 W2,SE;  
028 LOTS 1-4;  
028 W2NE,W2,W2SE;  
033 LOTS 1-4;  
033 W2NE,W2,W2SE;  
034 LOTS 1-8;  
034 NWNE,SESE;

White Pine County  
Ely DO  
PHMA,GHMA,OHMA

**NV-18-09-050 1862.000 Acres**

T.0250N, R.0550E, 21 MDM, NV  
Sec. 029 PROT ALL;  
030 PROT ALL;  
031 PROT ALL;  
032 PROT ALL EXCLUDE MS 2180;

White Pine County  
Ely DO  
GHMA, OHMA

**NV-18-09-051 1926.680 Acres**

T.0260N, R.0550E, 21 MDM, NV  
Sec. 019 LOTS 1-4;  
019 E2,E2NW,E2SW;  
020 ALL;  
021 LOTS 1-4;  
021 W2NE,W2,W2SE;

White Pine County  
Ely DO  
PHMA,GHMA,OHMA

**NV-18-09-052 1920.000 Acres**

T.0260N, R.0550E, 21 MDM, NV  
Sec. 028 LOTS 1-4;  
028 W2NE,W2,W2SE;  
029 ALL;  
030 LOTS 1-4;  
030 E2,E2NW,E2SW;

White Pine County  
Ely DO  
PHMA,GHMA, OHMA

**NV-18-09-053 1968.500 Acres**

T.0260N, R.0550E, 21 MDM, NV  
Sec. 031 LOTS 1-7;  
031 NE,E2NW,NESW,N2SE;  
032 LOTS 1-4;  
032 N2,N2SW,N2SE;  
033 LOTS 1-7;  
033 W2NE,NW,N2SW,NWSE;

White Pine County  
Ely DO  
GHMA, OHMA

**NV-18-09-055 2557.400 Acres**

T.0180N, R.0560E, 21 MDM, NV  
Sec 001 LOTS 1-4;  
001 S2NE,S2NW,S2;  
002 LOTS 1-4;  
002 S2NE,S2NW,S2;  
003 LOTS 1-4;  
003 S2NE,S2NW,S2;  
004 LOTS 1-4;  
004 S2NE,S2NW,S2;

White Pine County  
Ely DO

**NV-18-09-056 1271.180 Acres**

T.0180N, R.0560E, 21 MDM, NV  
Sec. 005 LOTS 1-4;  
005 S2NE,S2NW,S2;  
006 LOTS 1-7;  
006 S2NE,SENW,E2SW,SE;

White Pine County  
Ely DO  
OHMA

**NV-18-09-057 2558.480 Acres**

T.0190N, R.0560E, 21 MDM, NV  
Sec. 001 LOTS 1-4;  
001 S2NE,S2NW,S2;  
002 LOTS 1-4;  
002 S2NE,S2NW,S2;  
011 ALL;  
012 ALL;

White Pine County  
Ely DO

**NV-18-09-058 2557.200 Acres**

T.0190N, R.0560E, 21 MDM, NV  
Sec. 003 LOTS 1-4;  
003 S2NE, S2NW, S2;  
004 LOTS 1-4;  
004 S2NE, S2NW, S2;  
009 ALL;  
010 ALL;

White Pine County  
Ely DO

**NV-18-09-059 2519.970 Acres**

T.0190N, R.0560E, 21 MDM, NV  
Sec. 005 LOTS 1-4;  
005 S2NE, S2NW, S2;  
006 LOTS 1-7;  
006 S2NE, SENW, E2SW, SE;  
007 LOTS 1-4;  
007 E2, E2NW, E2SW;  
008 ALL;

White Pine County  
Ely DO

**NV-18-09-060 2560.000 Acres**

T.0190N, R.0560E, 21 MDM, NV  
Sec. 013 ALL;  
014 ALL;  
023 ALL;  
024 ALL;

White Pine County  
Ely DO

**NV-18-09-061 2560.000 Acres**

T.0190N, R.0560E, 21 MDM, NV  
Sec. 015 ALL;  
016 ALL;  
021 ALL;  
022 ALL;

White Pine County  
Ely DO

**NV-18-09-062 2529.920 Acres**

T.0190N, R.0560E, 21 MDM, NV  
Sec. 017 ALL;  
018 LOTS 1-4;  
018 E2, E2NW, E2SW;  
019 LOTS 1-4;  
019 E2, E2NW, E2SW;  
020 ALL;

White Pine County  
Ely DO

**NV-18-09-063 2560.000 Acres**

T.0190N, R.0560E, 21 MDM, NV  
Sec. 025 ALL;  
026 ALL;  
035 ALL;  
036 ALL;

White Pine County  
Ely DO

**NV-18-09-064 2560.000 Acres**

T.0190N, R.0560E, 21 MDM, NV  
Sec. 027 ALL;  
028 ALL;  
033 ALL;  
034 ALL;

White Pine County  
Ely DO

**NV-18-09-065 2534.800 Acres**

T.0190N, R.0560E, 21 MDM, NV  
Sec. 029 ALL;  
030 LOTS 1-4;  
030 E2, E2NW, E2SW;  
031 LOTS 1-4;  
031 E2, E2NW, E2SW;  
032 ALL;

White Pine County  
Ely DO  
OHMA

**NV-18-09-066 2402.230 Acres**

T.0200N, R.0560E, 21 MDM, NV  
Sec. 001 LOTS 1-4;  
001 S2NE, S2NW, S2;  
002 LOTS 1-4;  
002 S2NE, S2NW, S2;  
003 LOTS 3, 4;  
003 S2NW, S2;  
010 ALL;

White Pine County  
Ely DO  
GHMA, OHMA

**NV-18-09-067 2192.840 Acres**

T.0200N, R.0560E, 21 MDM, NV  
Sec. 004 LOTS 3, 4;  
004 S2NW, SW;  
005 LOTS 1-4;  
005 S2NE, S2NW, S2;  
006 LOTS 1-7;  
006 S2NE, SENW, E2SW, SE;  
007 LOTS 1-4;  
007 E2, E2NW, E2SW;

White Pine County  
Ely DO  
OHMA

**NV-18-09-068 2560.000 Acres**

T.0200N, R.0560E, 21 MDM, NV  
Sec. 008 ALL;  
009 ALL;  
016 ALL;  
017 ALL;

White Pine County  
Ely DO  
OHMA

**NV-18-09-069**            **1920.000 Acres**  
T.0200N, R.0560E, 21 MDM, NV  
Sec. 011    ALL;  
      013    ALL;  
      014    ALL;  
White Pine County  
Ely DO  
PHMA, GHMA, OHMA

**NV-18-09-070**            **1874.160 Acres**  
T.0200N, R.0560E, 21 MDM, NV  
Sec. 018    LOTS 1-4;  
      018    E2, E2NW, E2SW;  
      019    LOTS 1-4;  
      019    E2, E2NW, E2SW;  
      020    ALL;  
White Pine County  
Ely DO

**NV-18-09-071**            **2200.000 Acres**  
T.0200N, R.0560E, 21 MDM, NV  
Sec. 021    ALL;  
      022    S2;  
      023    N2, N2SW, SESW, SE;  
      024    ALL;  
White Pine County  
Ely DO  
OHMA

**NV-18-09-072**            **2560.000 Acres**  
T.0200N, R.0560E, 21 MDM, NV  
Sec. 027    ALL;  
      028    ALL;  
      033    ALL;  
      034    ALL;  
White Pine County  
Ely DO  
OHMA

**NV-18-09-073**            **2518.600 Acres**  
T.0200N, R.0560E, 21 MDM, NV  
Sec. 029    ALL;  
      030    LOTS 1-4;  
      030    E2, E2NW, E2SW;  
      031    LOTS 1-4;  
      031    E2, E2NW, E2SW;  
      032    ALL;  
White Pine County  
Ely DO

**NV-18-09-074**            **1244.680 Acres**  
T.0210N, R.0560E, 21 MDM, NV  
Sec. 001    LOTS 1-4;  
      001    SWNE, S2NW, S2;  
      002    LOTS 1-4;  
      002    S2NE, S2NW, S2;  
White Pine County  
Ely DO  
GHMA, OHMA

**NV-18-09-075**            **1280.440 Acres**  
T.0210N, R.0560E, 21 MDM, NV  
Sec. 003    LOTS 1-4;  
      003    S2NE, S2NW, S2;  
      004    LOTS 1-4;  
      004    S2NE, S2NW, S2;  
White Pine County  
Ely DO  
GHMA, OHMA

**NV-18-09-076**            **1232.420 Acres**  
T.0210N, R.0560E, 21 MDM, NV  
Sec. 005    LOTS 1, 2, 4;  
      005    S2NE, S2NW, S2;  
      006    LOTS 1-7;  
      006    S2NE, SENW, E2SW, SE;  
White Pine County  
Ely DO  
OHMA

**NV-18-09-077**            **1595.240 Acres**  
T.0210N, R.0560E, 21 MDM, NV  
Sec. 007    LOTS 1-4;  
      007    E2, E2NW, E2SW;  
      008    N2NE, W2, SWSE;  
      009    E2, N2NW, NESW, S2SW;  
White Pine County  
Ely DO

**NV-18-09-078**            **1920.000 Acres**  
T.0210N, R.0560E, 21 MDM, NV  
Sec. 010    ALL;  
      011    ALL;  
      012    ALL;  
White Pine County  
Ely DO  
GHMA, OHMA

**NV-18-09-079**            **2553.520 Acres**  
T.0210N, R.0560E, 21 MDM, NV  
Sec. 017    ALL;  
      018    LOTS 1-4;  
      018    E2, E2NW, E2SW;  
      019    LOTS 1-4;  
      019    E2, E2NW, E2SW;  
      020    ALL;  
White Pine County  
Ely DO  
GHMA, OHMA

**NV-18-09-080**            **1925.680 Acres**  
T.0240N, R.0560E, 21 MDM, NV  
Sec. 001    LOTS 1-4;  
      001    S2NE, S2NW, S2;  
      002    LOTS 1-4;  
      002    S2NE, S2NW, S2;  
      003    LOTS 1-4;  
      003    S2NE, S2NW, S2;  
White Pine County  
Ely DO  
GHMA, OHMA

**NV-18-09-081 1910.780 Acres**

T.0240N, R.0560E, 21 MDM, NV  
Sec. 004 LOTS 1-4;  
004 S2NE, S2NW, S2;  
005 LOTS 1-4;  
005 S2NE, S2NW, S2;  
006 LOTS 1-7;  
006 S2NE, SENW, E2SW, SE;

White Pine County  
Ely DO  
PHMA, GHMA, OHMA

**NV-18-09-082 1905.890 Acres**

T.0240N, R.0560E, 21 MDM, NV  
Sec. 007 LOTS 1-4;  
007 E2, E2NW, E2SW;  
008 ALL;  
009 ALL;

White Pine County  
Ely DO  
PHMA, OHMA, GHMA

**NV-18-09-083 1920.000 Acres**

T.0240N, R.0560E, 21 MDM, NV  
Sec. 010 ALL;  
011 ALL;  
012 ALL;

White Pine County  
Ely DO  
OHMA, GHMA

**NV-18-09-084 1920.000 Acres**

T.0240N, R.0560E, 21 MDM, NV  
Sec. 013 ALL;  
014 ALL;  
015 ALL;

White Pine County  
Ely DO  
PHMA, OHMA

**NV-18-09-085 1906.610 Acres**

T.0240N, R.0560E, 21 MDM, NV  
Sec. 016 ALL;  
017 ALL;  
018 LOTS 1-4;  
018 E2, E2NW, E2SW;

White Pine County  
Ely DO  
PHMA, GHMA

**NV-18-09-086 1906.880 Acres**

T.0240N, R.0560E, 21 MDM, NV  
Sec. 019 LOTS 1-4;  
019 E2, E2NW, E2SW;  
020 ALL;  
021 ALL;

White Pine County  
Ely DO  
PHMA, OHMA, GHMA

**NV-18-09-087 1920.000 Acres**

T.0240N, R.0560E, 21 MDM, NV  
Sec. 022 ALL;  
023 ALL;  
024 ALL;

White Pine County  
Ely DO  
OHMA, GHMA

**NV-18-09-088 1920.000 Acres**

T.0240N, R.0560E, 21 MDM, NV  
Sec. 025 ALL;  
026 ALL;  
027 ALL;

White Pine County  
Ely DO  
PHMA, OHMA, GHMA

**NV-18-09-089 1907.680 Acres**

T.0240N, R.0560E, 21 MDM, NV  
Sec. 028 ALL;  
029 ALL;  
030 LOTS 1-4;  
030 E2, E2NW, E2SW;

White Pine County  
Ely DO  
PHMA, OHMA, GHMA

**NV-18-09-090 1905.200 Acres**

T.0240N, R.0560E, 21 MDM, NV  
Sec. 031 LOTS 1-4  
031 E2, E2NW, E2SW;  
032 ALL;  
033 ALL;

White Pine County  
Ely DO  
PHMA, GHMA, OHMA

**NV-18-09-091 1920.000 Acres**

T.0240N, R.0560E, 21 MDM, NV  
Sec. 034 ALL;  
035 ALL;  
036 ALL;

White Pine County  
Ely DO  
PHMA, GHMA

**NV-18-09-092 1863.400 Acres**

T.0250N, R.0560E, 21 MDM, NV  
Sec. 006 LOTS 1-7;  
006 S2NE, SENW, E2SW;  
006 N2SE, SWSE;  
007 LOTS 1-4;  
007 E2, E2NW, E2SW;  
008 ALL;

White Pine County  
Ely DO  
OHMA, GHMA



**NV-18-09-093**            **1262.230 Acres**  
T.0250N, R.0560E, 21 MDM, NV  
Sec. 017    ALL;  
      018    LOTS 1-4;  
      018    E2,E2NW,E2SW;  
White Pine County  
Ely DO  
GHMA,OHMA

**NV-18-09-094**            **1280.000 Acres**  
T.0250N, R.0560E, 21 MDM, NV  
Sec. 027    ALL;  
      028    ALL;  
White Pine County  
Ely DO  
OHMA,GHMA

**NV-18-09-095**            **2545.810 Acres**  
T.0250N, R.0560E, 21 MDM, NV  
Sec. 031    LOTS 1-4;  
      031    E2,E2NW,E2SW;  
      032    ALL;  
      033    ALL;  
      034    ALL;  
White Pine County  
Ely DO  
PHMA,OHMA,GHMA

**NV-18-09-096**            **1916.270 Acres**  
T.0260N, R.0560E, 21 MDM, NV  
Sec. 019    LOTS 1-4;  
      019    E2,E2NW,E2SW;  
      030    LOTS 1-4;  
      030    E2,E2NW,E2SW;  
      031    LOTS 1-4;  
      031    E2,E2NW,E2SW;  
White Pine County  
Ely DO  
PHMA,GHMA

**NV-18-09-097**            **1037.900 Acres**  
T.0100N, R.0570E, 21 MDM, NV  
Sec. 001    LOTS 4;  
      001    S2NE,S2NW,SWSE;  
      002    LOTS 1-4;  
      002    S2NE,S2NW,SW;  
      002    NESE,SWSE;  
      011    S2NW;  
T.0110N, R.0570E, 21 MDM, NV  
Sec. 035    NW;  
Nye County  
Ely DO  
PRESALE OFFER NVN094694

**NV-18-09-098**            **644.920 Acres**  
T.0100N, R.0570E, 21 MDM, NV  
Sec. 004    LOTS 1-8;  
      004    S2NE,S2;  
Nye County  
Ely DO  
PENDING PRESALE OFFER NO. NVN-094609

**NV-18-09-099**            **640.000 Acres**  
T.0110N, R.0570E, 21 MDM, NV  
Sec. 036    ALL;  
Nye County  
Ely DO  
PENDING PRESALE OFFER NO. NVN-94778

**NV-18-09-100**            **1126.680 Acres**  
T.0100N, R.0580E, 21 MDM, NV  
Sec. 006    LOTS 1-7;  
      006    S2NE,SENW,E2SW,SE;  
      007    LOTS 1-4;  
      007    NENE,W2NE,W2NW;  
      007    W2SW,W2SE;  
Nye County  
Ely DO  
PENDING PRESALE OFFER NO. NVN-095043

**NV-18-09-101**            **439.840 Acres**  
T.0110N, R.0580E, 21 MDM, NV  
Sec. 031    LOTS 1-4;  
      031    N2NE,SWNE,E2NW,E2SW;  
Nye County  
Ely DO  
PENDING PRESALE OFFER NO. NVN-094803

**NV-18-09-102**            **2555.720 Acres**  
T.0250N, R.0590E, 21 MDM, NV  
Sec. 001    LOTS 1-4;  
      001    S2NE,S2NW,S2;  
      002    LOTS 1-4;  
      002    S2NE,S2NW,S2;  
      011    ALL;  
      012    ALL;  
White Pine County  
Ely DO

**NV-18-09-103**            **1280.000 Acres**  
T.0250N, R.0590E, 21 MDM, NV  
Sec. 025    ALL;  
      036    ALL;  
White Pine County  
Ely DO

**NV-18-09-104**            **1920.000 Acres**  
T.0260N, R.0590E, 21 MDM, NV  
Sec. 022    ALL;  
      023    ALL;  
      024    ALL;  
White Pine County  
Ely DO

**NV-18-09-105**            **1920.000 Acres**  
T.0260N, R.0590E, 21 MDM, NV  
Sec. 025    ALL;  
      026    ALL;  
      027    ALL;  
White Pine County  
Ely DO

**NV-18-09-106**            **2560.000 Acres**  
T.0260N, R.0590E, 21 MDM, NV  
Sec. 033    ALL;  
     034    ALL;  
     035    ALL;  
     036    ALL;  
White Pine County  
Ely DO

**NV-18-09-107**            **2560.000 Acres**  
T.0050S, R.0650E, 21 MDM, NV  
Sec. 020    PROT ALL;  
     021    PROT ALL;  
     022    PROT ALL;  
     023    PROT ALL;  
Lincoln County  
Ely DO

**NV-18-09-108**            **2560.000 Acres**  
T.0050S, R.0650E, 21 MDM, NV  
Sec. 032    PROT ALL;  
     033    PROT ALL;  
     034    PROT ALL;  
     035    PROT ALL;  
Lincoln County  
Ely DO

**NV-18-09-109**            **640.000 Acres**  
T.0050S, R.0650E, 21 MDM, NV  
Sec. 036    PROT ALL;  
Lincoln County  
Ely DO

**NV-18-09-110**            **1676.230 Acres**  
T.0050S, R.0640E, 21 MDM, NV  
Sec. 001    LOTS 1-4;  
     001    S2NE, S2NW, S2;  
     002    LOTS 1-4;  
     002    S2NE, S2NW, N2SW;  
     002    SWSW, SE;  
     003    LOTS 1-4;  
     003    S2NE, S2NW, S2;  
     004    SESE;  
Lincoln County  
Ely DO

**NV-18-09-111**            **1907.650 Acres**  
T.0050S, R.0640E, 21 MDM, NV  
Sec. 005    LOTS 1-4;  
     005    S2NE, S2NW, SW, W2SE;  
     006    LOTS 1-7;  
     006    S2NE, SENW, E2SW, SE;  
     007    LOTS 1-4;  
     007    E2, E2NW, E2SW;  
     008    NW, N2SW, SWSW;  
Lincoln County  
Ely DO

**NV-18-09-112**            **2200.000 Acres**  
T.0050S, R.0640E, 21 MDM, NV  
Sec. 009    NENE, S2NE, SE;  
     010    ALL;  
     011    ALL;  
     012    ALL;  
Lincoln County  
Ely DO

**NV-18-09-113**            **2480.000 Acres**  
T.0050S, R.0640E, 21 MDM, NV  
Sec. 013    ALL;  
     014    ALL;  
     015    ALL;  
     016    NE, E2NW, S2;  
Lincoln County  
Ely DO

**NV-18-09-114**            **1075.920 Acres**  
T.0050S, R.0640E, 21 MDM, NV  
Sec. 017    NWNW;  
     018    LOTS 1-4;  
     018    E2, E2NW, E2SW;  
     019    LOTS 1-4;  
     019    W2NE, E2NW, E2SW;  
     020    E2SE;  
Lincoln County  
Ely DO

**NV-18-09-115**            **2512.640 Acres**  
T.0050S, R.0640E, 21 MDM, NV  
Sec. 021    ALL;  
     022    ALL;  
     023    LOTS 1-5;  
     023    N2, W2SW, NESE;  
     024    ALL;  
Lincoln County  
Ely DO

**NV-18-09-116**            **2318.580 Acres**  
T.0050S, R.0640E, 21 MDM, NV  
Sec. 025    LOTS 1-3, 5;  
     025    E2, E2NW, NESW;  
     026    LOTS 1-9;  
     026    SW, W2NW, SWSE;  
     027    ALL;  
     028    ALL;  
Lincoln County  
Ely DO

**NV-18-09-117**            **1104.790 Acres**  
T.0050S, R.0640E, 21 MDM, NV  
Sec. 029    E2, SESW;  
     030    LOTS 1-3;  
     030    NWNW;  
     032    NE, E2NW, SWNW, S2;  
Lincoln County  
Ely DO

**NV-18-09-118 2101.350 Acres**  
T.0050S, R.0640E, 21 MDM, NV  
Sec. 033 ALL;  
034 ALL;  
035 LOTS 1-2;  
035 W2NE, SENE, W2;  
035 N2SE, SWSE;  
036 LOTS 1, 2, 4, 5, 7;  
036 LOTS 8, 15, 16;  
036 NENE;  
Lincoln County  
Ely DO

**NV-18-09-119 1286.360 Acres**  
T.0060S, R.0640E, 21 MDM, NV  
Sec. 003 LOTS 1-4;  
003 S2NE, S2NW, S2;  
004 LOTS 1-4;  
004 S2NE, S2NW, S2;  
Lincoln County  
Ely DO

**NV-18-09-120 2000.120 Acres**  
T.0060S, R.0640E, 21 MDM, NV  
Sec. 005 LOTS 1-4;  
005 S2NE, S2NW, S2;  
006 LOTS 1;  
006 SENE, SE;  
007 LOTS 4;  
007 E2, SENW, E2SW;  
008 ALL;  
Lincoln County  
Ely DO

**NV-18-09-121 2334.020 Acres**  
T.0060S, R.0640E, 21 MDM, NV  
Sec. 009 ALL;  
010 ALL;  
011 LOTS 1-5;  
011 W2, S2SE;  
012 LOTS 1-6;  
012 E2NE, NWSW, S2SW, SE;  
Lincoln County  
Ely DO

**NV-18-09-122 2560.000 Acres**  
T.0060S, R.0640E, 21 MDM, NV  
Sec. 013 ALL;  
014 ALL;  
015 ALL;  
016 ALL;  
Lincoln County  
Ely DO

**NV-18-09-123 2532.960 Acres**  
T.0060S, R.0640E, 21 MDM, NV  
Sec. 017 ALL;  
018 LOTS 1-4;  
018 E2, E2NW, E2SW;  
019 LOTS 1-4;  
019 E2, E2NW, E2SW;  
020 ALL;  
Lincoln County  
Ely DO

**NV-18-09-124 2560.000 Acres**  
T.0060S, R.0640E, 21 MDM, NV  
Sec. 021 ALL;  
022 ALL;  
023 ALL;  
024 ALL;  
Lincoln County  
Ely DO

**NV-18-09-125 2560.000 Acres**  
T.0060S, R.0640E, 21 MDM, NV  
Sec. 025 ALL;  
026 ALL;  
027 ALL;  
028 ALL;  
Lincoln County  
Ely DO

**NV-18-09-126 2537.960 Acres**  
T.0060S, R.0640E, 21 MDM, NV  
Sec. 029 ALL;  
030 LOTS 1-4;  
030 E2, E2NW, E2SW;  
031 LOTS 1-4;  
031 E2, E2NW, E2SW;  
032 ALL;  
Lincoln County  
Ely DO

**NV-18-09-127 2560.000 Acres**  
T.0060S, R.0640E, 21 MDM, NV  
Sec. 033 ALL;  
034 ALL;  
035 ALL;  
036 ALL;  
Lincoln County  
Ely DO

**NV-18-09-128 1925.000 Acres**  
T.0050S, R.0650E, 21 MDM, NV  
Sec. 001 PROT ALL;  
002 PROT ALL;  
003 PROT ALL;  
Lincoln County  
Ely DO

**NV-18-09-129 2528.000 Acres**  
T.0050S, R.0650E, 21 MDM, NV  
Sec. 004 PROT ALL;  
005 PROT ALL;  
006 PROT ALL;  
007 PROT ALL;  
Lincoln County  
Ely DO

**NV-18-09-130 2560.000 Acres**  
T.0050S, R.0650E, 21 MDM, NV  
Sec. 008 PROT ALL;  
009 PROT ALL;  
010 PROT ALL;  
011 PROT ALL;  
Lincoln County  
Ely DO

**NV-18-09-131 2555.000 Acres**

T.0050S, R.0650E, 21 MDM, NV  
Sec. 012 PROT ALL;  
013 PROT ALL;  
014 PROT ALL;EXCEPT MS2052D  
015 PROT ALL;EXCEPT MS2052D  
Lincoln County  
Ely DO  
EXCEPT MS2052D

**NV-18-09-132 2529.000 Acres**  
T.0050S, R.0650E, 21 MDM, NV  
Sec. 016 PROT ALL;  
017 PROT ALL;  
018 PROT ALL;  
019 PROT ALL;  
Lincoln County  
Ely DO

**NV-18-09-133 2554.000 Acres**  
T.0050S, R.0650E, 21 MDM, NV  
Sec. 024 PROT ALL;  
025 PROT ALL;  
026 PROT ALL;EXCEPT MS 2108B  
027 PROT ALL;  
Lincoln County  
Ely DO  
EXCEPT MS 2108B PATENT 40046

**NV-18-09-134 2527.000 Acres**  
T.0050S, R.0650E, 21 MDM, NV  
Sec. 028 PROT ALL;  
029 PROT ALL;  
030 PROT ALL;  
031 PROT ALL;EXCEPT MS 2029  
Lincoln County  
Ely DO  
EXCEPT MS 2029 PATENT 37586

**NV-18-09-135 1926.000 Acres**  
T.0060S, R.0650E, 21 MDM, NV  
Sec. 001 PROT ALL;  
002 PROT ALL;  
003 PROT ALL;  
Lincoln County  
Ely DO

**NV-18-09-136 2536.000 Acres**  
T.0060S, R.0650E, 21 MDM, NV  
Sec. 004 PROT ALL;  
005 PROT ALL;  
006 PROT ALL;  
007 PROT ALL;  
Lincoln County  
Ely DO  
EXCEPT MS 2113B

**NV-18-09-137 2560.000 Acres**

T.0060S, R.0650E, 21 MDM, NV  
Sec. 008 PROT ALL;  
009 PROT ALL;  
010 PROT ALL;  
011 PROT ALL;  
Lincoln County  
Ely DO

**NV-18-09-138 2560.000 Acres**  
T.0060S, R.0650E, 21 MDM, NV  
Sec. 012 PROT ALL;  
013 PROT ALL;  
014 PROT ALL;  
015 PROT ALL;  
Lincoln County  
Ely DO  
EXCEPT MS 2015

**NV-18-09-139 2537.000 Acres**  
T.0060S, R.0650E, 21 MDM, NV  
Sec. 016 PROT ALL;  
017 PROT ALL;  
018 PROT ALL;  
019 PROT ALL;  
Lincoln County  
Ely DO

**NV-18-09-140 2560.000 Acres**  
T.0060S, R.0650E, 21 MDM, NV  
Sec. 020 PROT ALL;  
024 PROT ALL;  
025 PROT ALL;  
026 PROT ALL;  
027 PROT ALL;  
Lincoln County  
Ely DO

**NV-18-09-141 2560.000 Acres**  
T.0060S, R.0650E, 21 MDM, NV  
Sec. 021 PROT ALL;  
022 PROT ALL;  
023 PROT ALL;  
Lincoln County  
Ely DO

**NV-18-09-142 2540.000 Acres**  
T.0060S, R.0650E, 21 MDM, NV  
Sec. 028 PROT ALL;  
029 PROT ALL;  
030 PROT ALL;  
031 PROT ALL;  
Lincoln County  
Ely DO

**NV-18-09-143 1920.000 Acres**  
T.0060S, R.0650E, 21 MDM, NV  
Sec. 032 PROT ALL;  
033 PROT ALL;  
034 PROT ALL;  
Lincoln County  
Ely DO

**NV-18-09-144 1280.000 Acres**

T.0060S, R.0650E, 21 MDM, NV  
Sec. 035 PROT ALL;  
036 PROT ALL;  
Lincoln County  
Ely DO

Number of Parcels - 144

Total Acreage - 294,694.30

Total number of Parcels with Presale Offers - 5

Parcel Number of Parcels with Presale Offers - 097,098,099,100,101

Total Acreage With Presale Offers - 3,889.34

Any portion of the listed lands may be deleted upon determination that such lands are not available for leasing.

**Attachment B**  
Lease Sale Stipulations

## **A. Stipulations and Lease Notices**

*Stipulations* are restrictions that are included in the current applicable land use plan – the Ely RMP.

*Lease Notices* serve to inform prospective lessees of other regulatory authorities that may apply to a parcel.

### **BLM Nevada Standard Stipulations (#NV-L-00-A-LN)**

#### **BLM Nevada Standard Stipulations**

These stipulations and notices apply to all parcels all lands and represent standard Best Management Practices for ensuring compliance with extant Federal Laws and resource protection.

##### **T&E, Sensitive and Special Status Species**

The lease area may now or hereafter contain plants, animals, or their habitats determined to be threatened, endangered, or other special status species. BLM may recommend modifications to exploration and development proposals to further its conservation and management objective to avoid BLM-approved activity that will contribute to a need to list such a species or their habitat. BLM may require modifications to or disapprove proposed activity that is likely to result in jeopardy to the continued existence of a proposed or listed threatened or endangered species or result in the destruction or adverse modification of a designated or proposed critical habitat. BLM will not approve any ground-disturbing activity that may affect any such species or critical habitat until it completes its obligations under applicable requirements of the Endangered Species Act as amended, 16 U.S.C. §1531 et seq., including completion of any required procedure for conference or consultation.

##### **Migratory Birds**

The Operator is responsible for compliance with provisions of the Migratory Bird Treaty Act by implementing measures to prevent take of migratory birds. Operators should be aware that any ground clearing or other disturbance (such as creating cross-country access to sites, drilling, and/or construction) during the migratory bird (including raptors) nesting season (March 1 - July 31) risks a violation of the Migratory Bird Treaty Act. Disturbance to nesting migratory birds should be avoided by conducting surface disturbing activities outside the migratory bird nesting season.

If surface disturbing activities must be implemented during the nesting season, a preconstruction survey for nesting migratory birds should be performed by a qualified wildlife biologist, during the breeding season (if work is not completed within a specified time frame, then additional surveys may be needed). If active nests are found, an appropriately-sized no surface disturbance buffer determined in coordination with the BLM biologist should be placed on the active nest until the nesting attempt has been completed. If no active nests are found, construction activities must occur within the survey validity time frame specified in the conditions of approval.

##### **Cultural Resources and Tribal Consultation**

This lease may be found to contain historic properties and/or resources protected under the National Historic Preservation Act (NHPA), American Indian Religious Freedom Act, Native American Graves Protection and Repatriation Act, Executive Order 13007, or other statutes and executive orders. The BLM will not approve any ground-disturbing activities that may affect any such properties or resources until it completes its obligations (e.g., State Historic Preservation Officer (SHPO) and tribal consultation) under applicable requirements of the NHPA and other authorities. The BLM may require modification to exploration or development proposals to protect such properties, or disapprove any activity that is likely to result in adverse effects that cannot be successfully avoided, minimized, or mitigated.

##### **Fossils**

This area has low to moderate potential for vertebrate paleontological resources, unless noted to have higher potential in a separate stipulation. This area may contain vertebrate paleontological resources. Inventory and/or on-site monitoring during disturbance or spot checking may be required of the operator. In the event that previously undiscovered paleontological resources are discovered in the performance of any surface disturbing activities, the item(s) or condition(s) will be left intact and immediately brought to the attention of the authorized officer of the BLM. Operations within 250 feet of any such discovery will not be resumed until written authorization to proceed is issued by the Authorized Officer. The lessee will bear the cost of any required paleontological appraisals, surface collection of

fossils, or salvage of any large conspicuous fossils of significant scientific interest discovered during the operations.

#### **Water**

The Operator is responsible for compliance with provisions of the Clean Water Act, Safe Drinking Water Act, and applicable State laws and regulations regarding protection of state water resources. Operators should contact Nevada Division of Water Resources and Nevada Division of Environmental Protection regarding necessary permits and compliance measures for any construction or other activities.

#### **Mining Claims**

This parcel may contain existing mining claims and/or mill sites located under the 1872 Mining Law. To the extent it does, the oil and gas lessee must conduct its operations, so far as reasonably practicable, to avoid damage to any known deposit of any mineral for which any mining claim on this parcel is located, and should not endanger or unreasonably or materially interfere with the mining claimant's operations, including any existing surface or underground improvements, workings, or facilities which may have been made for the purpose of mining operations. The provisions of the Multiple Mineral Development Act (30 U.S.C. 521 et seq.) shall apply on the leased lands.

#### **Fire**

The following precautionary measures should be taken to prevent wildland fires. In the event your operations should start a fire, you could be held liable for all suppression costs.

- All vehicles should carry fire extinguishers and a minimum of 10 gallons of water.
- Adequate fire-fighting equipment i.e. shovel, Pulaski, extinguisher(s) and a minimum 10 gallons of water should be kept at the drill site(s).
- Vehicle catalytic converters should be inspected often and cleaned of all brush and grass debris.
- When conducting welding operations, they should be conducted in an area free from or mostly free from vegetation. A minimum of 10 gallons water and a shovel should be on hand to extinguish any fires created from the sparks. Extra personnel should be at the welding site to watch for fires created by welding sparks.
- Report wildland fires immediately to the BLM Central Nevada Interagency Dispatch Center (CNIDC) at (775) 623-3444. Helpful information to reported is location (latitude and longitude if possible), what's burning, time started, who/what is near the fire and direction of fire spread.
- When conducting operations during the months of May through September, the operator must contact the BLM Ely District Office, Division of Fire and Aviation at (775 289-1800) to find out about any fire restrictions in place for the area of operation and to advise this office of approximate beginning and ending dates for your activities.

<b>Parcel #</b>	<b>Legal Land Description</b>
	Mount Diablo Meridian, Nevada
NV-18-09-001 through NV-18-09-053 and NV-18-09-055 through NV-18-09-144	ALL LANDS



**Stipulation – Raptor Nest Sites  
(#NV-L-06-B-TL)**

**Stipulation: Timing Limitation.** No surface activity from May 1 through July 15 within 0.5 mile of a raptor nest site which has been active within the past five years.

**Objective [Purpose]:** To protect raptor nesting activities necessary to maintaining the critical life stages of existing raptor populations.

**Exception:** The Authorized Officer may grant an exception if an environmental review determines that the action, as proposed or otherwise restricted, does not adversely affect raptor nest sites being protected by the restriction. An exception may also be granted if the proponent, BLM, and other affected interests, in consultation with Nevada Department of Wildlife, negotiate mitigation that would satisfactorily offset the anticipated impacts. An exception may be granted for actions designed to enhance the long-term utility or availability of the habitat.

**Modification:** The boundaries of the stipulated area may be modified if the authorized officer, in consultation with Nevada Department of Wildlife, determines that portions of the area can be occupied without adversely affecting raptor nesting activity. The dates for the timing restriction may be modified if new information indicates the dates are not valid for the leasehold. Any modification authorized by this stipulation is subject to 43 C.F.R. 3101.1-4, including provisions requiring public review for issues of major public concern, or substantial modifications.

**Waiver:** The stipulation may be waived if the authorized officer, in consultation with Nevada Department of Wildlife determines that the entire leasehold no longer contains raptor nest sites. Any waiver authorized by this stipulation is subject to 43 C.F.R. 3101.1-4, including provisions requiring public review for issues of major public concern, or substantial waivers.

<b>Parcel #</b>	<b>Legal Land Description</b>
	Mount Diablo Meridian, Nevada
NV-18-09-001 through NV-18-09-053 and NV-18-09-055 through NV-18-09-144	ALL LANDS

**Stipulation – Pronghorn Antelope Seasonal Habitat  
(#NV-L-01-A-TL)**

**Stipulation: Timing Limitation (TL)** -No surface activity within Pronghorn Antelope crucial winter habitat from November 1 through March 31.

**Objective [Purpose]:** To protect Pronghorn Antelope crucial winter habitat necessary to maintaining the critical life stages of Pronghorn wildlife populations.

**Exception:** The Authorized Officer may grant an exception if an environmental review determines that the action, as proposed or otherwise restricted, does not adversely affect the Pronghorn Antelope and Its habitat. An exception may also be granted if the proponent, BLM, and other affected interests negotiate mitigation that would satisfactorily offset the anticipated impacts to Pronghorn Antelope and its habitat. An exception may be granted for actions designed to enhance the long-term utility or availability of the habitat.

**Modification:** The boundaries of the stipulated area may be modified If the authorized officer, in consultation with Nevada Department of Wildlife, determines that portions of the area no longer contain the crucial winter pronghorn habitat or that the proposed action would not affect the species and habitat. The dates for the timing restriction may also be modified by the Authorized Officer if new information indicates the dates are not valid for the leasehold. Any modification authorized by this stipulation is subject to 43 C.F.R. 3101.1-4, Including provisions requiring public review for issues of major public concern, or substantial modifications.

**Waiver:** The restriction may be waived by the Authorized Officer if it is determined that the described lands do not contain suitable pronghorn habitat, or are otherwise incapable of serving the requirements of for the species and therefore no longer warrant consideration as a component necessary for their protection. Any waiver authorized by this stipulation is subject to 43 C.F.R. 3101.1--4, including provisions requiring public review for issues of major public concern, or substantial waivers.

<b>Parcel #</b>	<b>Legal Land Description</b>
NV-18-09-014	T. 18 N., R. 55 E., Sec. 1, Lots 3 and 4, E1/2, S1/2NW1/4, and SW1/4; Secs. 12 and 13; Sec. 13, S1/2NW1/4, N1/2SW1/4, and SW1/4SW1/4; Sec. 14, E1/2.
NV-18-09-015	T. 18 N., R. 55 E., Sec. 2, Lots 1 thru 4, S1/2NE1/4, S1/2NW1/4, and S1/2; Sec. 3, Lots 1 thru 4, S1/2NE1/4, S1/2NW1/4, and S1/2; Sec. 11, E1/2.
NV-18-09-016	T. 18 N., R. 55 E., Sec. 5, Lots 1 thru 4, S1/2NE1/4, S1/2NW1/4, and S1/2; Sec. 6, Lots 1 thru 3 and lots 6 and 7, S1/2NE1/4, SE1/4SW1/4, and E1/2SE1/4; Sec. 7, Lots 1 thru 4, S1/2NE1/4, E1/2NW1/4, NE1/4SW1/4, and SE1/4; Sec. 8, NE1/4 and S1/2.
NV-18-09-017	T. 18 N., R. 55 E., Sec. 17; Sec. 18, Lots 1 thru 4, E1/2, E1/2NW1/4, and E1/2SW1/4; Sec. 19, Lots 1 thru 4, E1/2, E1/2NW1/4, and E1/2SW1/4.
NV-18-09-018	T. 18 N., R. 55 E., Sec. 30, Lots 1 and 4, E1/2, E1/2NW1/4, and E1/2SW1/4; Sec. 31, Lots 1 thru 4, S1/2NE1/4, E1/2NW1/4, NE1/4SW1/4, and SE1/4.
NV-18-09-051	T. 26 N., R. 55 E., Sec. 19, Lots 1 and 2, N1/2NE1/4, and E1/2NW1/4; Sec. 20, N1/2NE1/4 and N1/2NW1/4; Sec. 21, Lot 1, NW1/4NE1/4, and N1/2NW1/4.

NV-18-09-056

T. 18 N., R. 56 E.,

Sec. 5, W1/2SW1/4;

Sec. 6, Lots 2 thru 7, S1/2NE1/4, SE1/4NW1/4, E1/2SW1/4, and SE1/4.

NV-18-09-065

T. 19 N., R. 56 E.,

Sec. 31, Lots 3 and 4, E1/2SW1/4, and SW1/4SE1/4.

**Stipulation – Pronghorn Antelope Kidding Habitat  
(#NV-L-01-B-TL)**

Stipulation: Timing Limitation (TL) -No surface activity within pronghorn antelope kidding areas from April 15 through June 30

Objective [Purpose]: To protect Pronghorn Antelope Kidding habitat necessary to maintaining the critical life stages of Pronghorn wildlife populations.

Exception: The Authorized Officer may grant an exception if an environmental review determines that the action, as proposed or otherwise restricted, does not adversely affect the Pronghorn Antelope Kidding Areas. An exception may also be granted if the proponent, BLM, and other affected interests negotiate mitigation that would satisfactorily offset the anticipated impacts to Pronghorn Antelope Kidding Areas. An exception may be granted for actions designed to enhance the long-term utility or availability of the habitat.

Modification: The boundaries of the stipulated area may be modified if the authorized officer, in consultation with Nevada Department of Wildlife, determines that portions of the area no longer contain Pronghorn Antelope Kidding habitat or that the proposed action would not affect the species and habitat. The dates for the timing restriction may also be modified by the Authorized Officer if new information indicates the dates are not valid for the leasehold. Any modification authorized by this stipulation is subject to 43 C.F.R. 3101.1- 4, including provisions requiring public review for issues of major public concern, or substantial modifications.

Waiver The restriction may be waived by the Authorized Officer if it is determined that the described lands do not contain suitable Pronghorn Kidding habitat, or are otherwise incapable of serving the requirements of for the species and therefore no longer warrant consideration as a component necessary for their protection. Any waiver authorized by this stipulation is subject to 43 C.F.R. 3101.1-4, including provisions requiring public review for issues of major public concern, or substantial waivers.

<b>Parcel #</b>	<b>Legal Land Description</b>
	Mount Diablo Meridian, Nevada
NV-18-09-001	T. 15 N., R. 53 E., Sec. 19, Lots 3 thru 4, S1/2NE1/4, SE1/4NW1/4, E1/2SW1/4, and SE1/4; Sec. 20, S1/2NE1/4, S1/2NW1/4, and S1/2; Sec. 29; Sec. 30, Lots 1 thru 4, E1/2, E1/2NW1/4, E1/2SW1/4.
NV-18-09-002	T. 15 N., R. 53 E., Sec. 21, S1/2NE1/4, S1/2NW1/4, and S1/2; Sec. 22, S1/2NE1/4, S1/2NW1/4, and S1/2; Sec. 27; Sec. 28, E1/2, NW1/4NW1/4, S1/2NW1/4, and S1/2.
NV-18-09-003	T. 15 N., R. 53 E., Sec. 23, SE1/4NE1/4, S1/2NW1/4, and S1/2; Sec. 24, S1/2NE1/4, S1/2NW1/4, and S1/2; Secs. 25 and 26.
NV-18-09-004	T. 15 N., R. 53 E., Sec. 31, Lots 1 thru 4, E1/2, E1/2NW1/4, E1/2SW1/4; Secs. 32 and 33.
NV-18-09-005	T. 15 N., R. 53 E., Secs. 34 thru 36.
NV-18-09-006	T. 16 N., R. 54 E., Sec. 1; Sec. 2, Lots 1 thru 4, S1/2NE1/4, S1/2NW1/4, and S1/2; Sec. 12.

NV-18-09-007 T. 16 N., R. 54 E.,  
Sec. 3, Lots 1 thru 4, S1/2NE1/4, S1/2NW1/4, and S1/2;  
Secs. 10 and 11.

NV-18-09-008 T. 16 N., R. 54 E.,  
Sec. 4, Lots 1 thru 4, S1/2NE1/4, S1/2NW1/4, and S1/2;  
Sec. 9.

NV-18-09-009 T. 16 N., R. 54 E.,  
Secs. 13, 14, 23 and 24.

NV-18-09-010 T. 16 N., R. 54 E.,  
Secs. 15, 16, 21 and 22.

NV-18-09-011 T. 16 N., R. 54 E.,  
Secs. 25, 26, 35 and 36.

NV-18-09-012 T. 16 N., R. 54 E.,  
Secs. 27, 28, 33 and 34.

NV-18-09-020 T. 20 N., R. 55 E.,  
Sec. 13, Lots 1 and 2, W1/2NE1/4, N1/2NW1/4, and SE1/4NW1/4.

NV-18-09-021 T. 22 N., R. 55 E.,  
Sec. 2, Lots 1 thru 4, SW1/4NE1/4, S1/2NW1/4, and W1/2SW1/4;  
Sec. 3, Lot 1 and lots 5 thru 7.

NV-18-09-022 T. 22 N., R. 55 E.,  
Sec. 10, Lots 1 and 4, and E1/2SE1/4;  
Sec. 11, W1/2NW1/4.

NV-18-09-023 T. 22 N., R. 55 E.,  
Sec. 15, E1/2.

NV-18-09-024 T. 22 N., R. 55 E.,  
Sec. 22, Lots 3 and 4, and E1/2.

NV-18-09-025 T. 22 N., R. 55 E.,  
Sec. 27, E1/2, E1/2NW1/4, NE1/4SW1/4, and S1/2SW1/4.

NV-18-09-026 T. 22 N., R. 55 E.,  
Sec. 34, NE1/4, N1/2NW1/4, SW1/4NW1/4, E1/2SW1/4, and S1/2SE1/4.

NV-18-09-027 T. 23 N., R. 55 E.,  
Sec. 2, Lots 1 thru 10, S1/2NE1/4, and SE1/4;  
Sec. 3, N1/2, E1/2SW1/4, and SE1/4.

NV-18-09-028 T. 23 N., R. 55 E.,  
Sec. 10, E1/2 and NE1/4NW1/4.

NV-18-09-029 T. 23 N., R. 55 E.,  
Sec. 11, Lots 1 thru 8, and E1/2;  
Sec. 14, Lots 1 thru 8, and E1/2;  
Sec. 15, E1/2NE1/4 and E1/2SE1/4.

NV-18-09-030 T. 23 N., R. 55 E.,  
Sec. 22, NE1/4NE1/4.

NV-18-09-031 T. 23 N., R. 55 E.,  
Sec. 23, Lots 1 thru 4, NE1/4, W1/2NW1/4, and W1/2SW1/4;  
Sec. 26, Lots 1 thru 4, W1/2NW1/4, and W1/2SW1/4;  
Sec. 35, Lots 1 thru 8.

NV-18-09-033 T. 23 N., R. 55 E.,  
Sec. 34, SE1/4SE1/4.

NV-18-09-034 T. 24 N., R. 55 E.,  
Sec. 1, Lots 1 thru 4, S1/2NE1/4, S1/2NW1/4, and S1/2;  
Sec. 2, Lots 1 thru 4, S1/2NE1/4, S1/2NW1/4, and S1/2;  
Sec. 3, Lots 1 thru 10, S1/2NE1/4, and SE1/4.

NV-18-09-035 T. 24 N., R. 55 E.,  
Sec. 4, Lots 1 thru 22, SW1/4, and W1/2SE1/4.

NV-18-09-036 T. 24 N., R. 55 E.,  
Sec. 9, Lots 1 thru 4, W1/2NE1/4, W1/2, and W1/2SE1/4;  
Sec. 16, Lots 1 thru 4, W1/2NE1/4, W1/2, and W1/2SE1/4.

NV-18-09-037 T. 24 N., R. 55 E.,  
Sec. 21, Lots 1 thru 4, W1/2NE1/4, E1/2NW1/4, E1/2SW1/4, and W1/2SE1/4.

NV-18-09-038 T. 24 N., R. 55 E.,  
Secs. 25 thru 27.

NV-18-09-039 T. 24 N., R. 55 E.,  
Sec. 28, Lots 1 thru 4, W1/2NE1/4, E1/2NW1/4, NE1/4SW1/4, and W1/2SE1/4.

NV-18-09-040 T. 24 N., R. 55 E.,  
Sec. 33, Lots 1 thru 4, and NE1/4NE1/4.  
Sec. 34, Lots 1 thru 8, and N1/2.

NV-18-09-041 T. 24 N., R. 55 E.,  
Sec. 35, Lots 1 thru 8, and N1/2;  
Sec. 36, Lots 1 thru 8, and N1/2.

NV-18-09-042 T. 25 N., R. 55 E.,  
Sec. 1, Lots 1 thru 4, S1/2NE1/4, S1/2NW1/4, and S1/2;  
Sec. 2, Lots 1 thru 4, S1/2NE1/4, SE1/4NW1/4, NE1/4SW1/4, and SE1/4;  
Sec. 11, E1/2, W1/2NW1/4, SW1/4SW1/4;  
Sec. 12.

NV-18-09-043 T. 25 N., R. 55 E.,  
Sec. 3, Lots 3 and 4, SW1/4NE1/4, S1/2NW1/4, SW1/4, W1/2SE1/4, and SE1/4SE1/4;  
Sec. 4, Lots 1 thru 4, S1/2NE1/4, S1/2NW1/4, and S1/2;  
Sec. 9, Lots 1 thru 14, SW1/4, and W1/2SE1/4;  
Sec. 10.

NV-18-09-044 T. 25 N., R. 55 E.,  
Sec. 5, Lots 1 and 2, S1/2NE1/4, SE1/4NW1/4, E1/2SW1/4, and SE1/4;  
Sec. 8, E1/2, E1/2NW1/4, and E1/2SW1/4.

NV-18-09-045 T. 25 N., R. 55 E.,  
Sec. 13;  
Sec. 14, NE1/4, W1/2NW1/4, W1/2SW1/4, N1/2SE1/4, and SE1/4SE1/4;  
Sec. 23, Lots 1 thru 8, and E1/2NE1/4;  
Sec. 24, Lots 1 thru 8, and N1/2.

NV-18-09-046 T. 25 N., R. 55 E.,  
Sec. 15;  
Sec. 16, Lots 1 thru 4, W1/2NE1/4, W1/2, W1/2SE1/4.

NV-18-09-047 T. 25 N., R. 55 E.,  
Sec. 21, Lots 1 thru 4, W1/2NE1/4, W1/2, W1/2SE1/4;  
Sec. 22, Lots 1 thru 8, and W1/2.

NV-18-09-048 T. 25 N., R. 55 E.,  
Sec. 25, Lots 1 thru 16;  
Sec. 26, E1/2NE1/4, W1/2NW1/4, and SE1/4;  
Sec. 35, E1/2, NE1/4NW1/4, S1/2NW1/4, and SW1/4;  
Sec. 36, W1/2.

NV-18-09-049 T. 25 N., R. 55 E.,  
Sec. 27, Lots 1 thru 4, W1/2, and SE1/4;  
Sec. 28, Lots 1 thru 4, W1/2NE1/4, W1/2, W1/2SE1/4;  
Sec. 33, Lots 1 thru 4, W1/2NE1/4, W1/2, W1/2SE1/4;  
Sec. 34, Lots 1 thru 8, NW1/4NE1/4, and SE1/4SE1/4.

NV-18-09-050 T. 25 N., R. 55 E.,  
Sec. 29, E1/2NE1/4 and E1/2SE1/4;  
Sec. 32, E1/2NE1/4.

NV-18-09-051 T. 25 N., R. 55 E.,  
Sec. 21, Lots 2 thru 4, and W1/2SE1/4.

NV-18-09-052 T. 26 N., R. 55 E.,  
Sec. 28, Lots 1 thru 4, W1/2NE1/4, E1/2NW1/4, SW1/4, and W1/2SE1/4.

NV-18-09-053 T. 26 N., R. 55 E.,  
Sec. 32, Lots 3 and 4, E1/2NE1/4, N1/2SE1/4;  
Sec. 33, Lots 1 thru 7, W1/2NE1/4, NW1/4, N1/2SW1/4, and NW1/4SE1/4.

NV-18-09-066 T. 20 N., R. 56 E.,  
Sec. 1, SE1/4SE1/4;  
Sec. 10, SW1/4, S1/2SE1/4.

NV-18-09-067 T. 20 N., R. 56 E.,  
 Sec. 4, Lots 3 and 4, S1/2NW1/4, and SW1/4;  
 Sec. 5, Lots 1 thru 4, S1/2NE1/4, S1/2NW1/4, and S1/2;  
 Sec. 6, Lots 1 thru 7, S1/2NE1/4, SE1/4NW1/4, E1/2SW1/4, and SE1/4;  
 Sec. 7, Lots 1 thru 4, E1/2, E1/2NW1/4, and E1/2SW1/4.

NV-18-09-068 T. 20 N., R. 56 E.,  
 Secs. 8 and 9;  
 Sec. 16, N1/2, N1/2SW1/4, and N1/2SE1/4;  
 Sec. 17, N1/2, N1/2SW1/4, and N1/2SE1/4.

NV-18-09-069 T. 20 N., R. 56 E.,  
 Sec. 11, SE1/4SE1/4;  
 Sec. 13;  
 Sec. 14, N1/2, N1/2SW1/4, and SE1/4.

NV-18-09-070 T. 20 N., R. 56 E.,  
 Sec. 18, Lots 1 and 2, NE1/4, E1/2NW1/4, and N1/2SE1/4.

NV-18-09-071 T. 20 N., R. 56 E.,  
 Sec. 24, N1/2NE1/4, SE1/4NE1/4, and N1/2NW1/4.

NV-18-09-075 T. 21 N., R. 56 E.,  
 Sec. 3, Lot 4, SW1/4NW1/4, and W1/2SW1/4;  
 Sec. 4, Lots 1 thru 4, S1/2NE1/4, S1/2NW1/4, and S1/2.

NV-18-09-076 T. 21 N., R. 56 E.,  
 Sec. 5, Lots 1, 2 and 4, S1/2NE1/4, S1/2NW1/4, and S1/2;  
 Sec. 6, Lots 1 thru 7, S1/2NE1/4, SE1/4NW1/4, E1/2SW1/4, and SE1/4.

NV-18-09-077 T. 21 N., R. 56 E.,  
 Sec. 7, Lots 1 thru 4, E1/2, E1/2NW1/4, and E1/2SW1/4;  
 Sec. 8, N1/2NE1/4, W1/2, and SW1/4SE1/4;  
 Sec. 9, E1/2, N1/2NW1/4, NE1/4SW1/4, and S1/2SW1/4.

NV-18-09-078 T. 21 N., R. 56 E.,  
 Sec. 10, W1/2NW1/4 and W1/2SW1/4.

NV-18-09-079 T. 21 N., R. 56 E.,  
 Sec. 17;  
 Sec. 18, Lots 1 thru 4, E1/2, E1/2NW1/4, and E1/2SW1/4;  
 Sec. 19, Lots 1 thru 4, E1/2, E1/2NW1/4, and E1/2SW1/4;  
 Sec. 20.

NV-18-09-080 T. 24 N., R. 56 E.,  
 Sec. 1, Lots 1 thru 4, S1/2NE1/4, S1/2NW1/4, and S1/2;  
 Sec. 2, Lots 1 thru 4, S1/2NE1/4, S1/2NW1/4, and S1/2;  
 Sec. 3, Lots 1 thru 4, S1/2NE1/4, S1/2NW1/4, and S1/2.

NV-18-09-081 T. 24 N., R. 56 E.,  
 Sec. 4, Lots 1 thru 4, S1/2NE1/4, S1/2NW1/4, and S1/2;  
 Sec. 5, Lots 1 thru 4, S1/2NE1/4, S1/2NW1/4, and S1/2;  
 Sec. 6, Lots 1 thru 7, S1/2NE1/4, SE1/4NW1/4, E1/2SW1/4, and SE1/4.

NV-18-09-082 T. 24 N., R. 56 E.,  
 Sec. 7, Lots 1 thru 4, E1/2, E1/2NW1/4, and E1/2SW1/4;  
 Secs. 8 and 9.

NV-18-09-083 T. 24 N., R. 56 E.,  
 Secs. 10 thru 12.

NV-18-09-084 T. 24 N., R. 56 E.,  
 Secs. 13 thru 15.

NV-18-09-085 T. 24 N., R. 56 E.,  
 Sec. 16, Lots 1 thru 4, E1/2, E1/2NW1/4, and E1/2SW1/4;  
 Secs. 17 and 18.

NV-18-09-086 T. 24 N., R. 56 E.,  
 Sec. 19, Lots 1 thru 4, E1/2, E1/2NW1/4, and E1/2SW1/4;  
 Secs. 20 and 21.

NV-18-09-087 T. 24 N., R. 56 E.,  
 Secs. 22 thru 24.

NV-18-09-088 T. 24 N., R. 56 E.,  
Sec. 25 thru 28.

NV-18-09-089 T. 24 N., R. 56 E.,  
Secs. 28 and 29;  
Sec. 30, Lots 1 thru 4, E1/2, E1/2NW1/4, and E1/2SW1/4.

NV-18-09-090 T. 24 N., R. 56 E.,  
Sec. 31, Lots 1 thru 4, E1/2, E1/2NW1/4, and E1/2SW1/4;  
Secs. 32 and 33.

NV-18-09-091 T. 24 N., R. 56 E.,  
Secs. 34 thru 36.

NV-18-09-092 T. 25 N., R. 56 E.,  
Sec. 6, Lots 1 thru 7, S1/2NE1/4, SE1/4NW1/4, E1/2SW1/4, N1/2SE1/4, and  
SW1/4SE1/4;  
Sec. 7, Lots 1 thru 4, E1/2, E1/2NW1/4, and E1/2SW1/4;  
Sec. 8.

NV-18-09-093 T. 25 N., R. 56 E.,  
Sec. 17;  
Sec. 18, Lots 1 thru 4, E1/2, E1/2NW1/4, and E1/2SW1/4.

NV-18-09-094 T. 25 N., R. 56 E.,  
Secs. 27 and 28.

NV-18-09-095 T. 25 N., R. 56 E.,  
Sec. 31, Lots 1 thru 4, E1/2, E1/2NW1/4, and E1/2SW1/4;  
Secs. 32 thru 34.

NV-18-09-096 T. 26 N., R. 56 E.,  
Sec. 19, Lots 1 thru 4, E1/2, E1/2NW1/4, and E1/2SW1/4;  
Sec. 30, Lots 1 thru 4, E1/2, E1/2NW1/4, and E1/2SW1/4;  
Sec. 31, Lots 1 thru 4, E1/2, E1/2NW1/4, and E1/2SW1/4.

NV-18-09-097 T. 10 N., R. 57 E.,  
Sec. 1, Lot 4, S1/2NE1/4, S1/2NW1/4, and SW1/4SE1/4;  
Sec. 2, Lots 1 thru 4, S1/2NE1/4, S1/2NW1/4, SW1/4, NE1/4SE1/4, and SW1/4SE1/4;  
Sec. 11, S1/2NW1/4.  
T. 11 N., R. 57 E.,  
Sec. 35. NW1/4.

NV-18-09-098 T. 10 N., R. 57 E.,  
Sec. 4, Lots 1 and 2, and lots 5 thru 8, S1/2NE1/4, and S1/2.

NV-18-09-099 T. 11 N., R. 57 E.,  
Sec. 36.

NV-18-09-100 T. 10 N., R. 58 E.,  
Sec. 6, Lots 1 thru 7, S1/2NE1/4, SE1/4NW1/4, E1/2SW1/4, and SE1/4;  
Sec. 7, Lots 1 thru 4, N1/2NE1/4, SW1/4NE1/4, E1/2NW1/4, E1/2SW1/4, and  
W1/2SE1/4.

NV-18-09-101 T. 11 N., R. 58 E.,  
Sec. 31, Lots 1 thru 4, N1/2NE1/4, SW1/4NE1/4, E1/2NW1/4, E1/2SW1/4.

NV-18-09-102 T. 25 N., R. 59 E.,  
Sec. 1, Lots 1 thru 4, S1/2NE1/4, S1/2NW1/4, and S1/2;  
Sec. 2, Lots 1 thru 4, S1/2NE1/4, S1/2NW1/4, and S1/2;  
Secs. 11 and 12.

NV-18-09-103 T. 25 N., R. 59 E.,  
Secs. 25 and 36.

NV-18-09-104 T. 26 N., R. 59 E.,  
Secs. 22 thru 24.

NV-18-09-105 T. 26 N., R. 59 E.,  
Secs. 25 thru 27.

NV-18-09-106 T. 26 N., R. 59 E.,  
Secs. 33 thru 36.



NV-18-09-110 T. 5 S., R. 64 E.,  
 Sec. 1, Lots 1 thru 4, S1/2NE1/4, S1/2NW1/4, and S1/2;  
 Sec. 2, Lots 1 thru 4, S1/2NE1/4, S1/2NW1/4, N1/2SW1/4, SW1/4SW1/4, and SE1/4;  
 Sec. 3, Lots 1 thru 4, S1/2NE1/4, S1/2NW1/4, and S1/2;  
 Sec. 4, SE1/4SE1/4.

NV-18-09-111 T. 5 S., R. 64 E.,  
 Sec. 5, Lots 1 thru 4, S1/2NE1/4, S1/2NW1/4, SW1/4, and W1/2SE1/4;  
 Sec. 6, Lots 1 thru 7, S1/2NE1/4, SE1/4NW1/4, E1/2SW1/4, and SE1/4;  
 Sec. 7, Lots 1 thru 4, E1/2, E1/2NW1/4, and E1/2SW1/4;  
 Sec. 8, NW1/4, N1/2SW1/4, and SW1/4SW1/4.

NV-18-09-112 T. 5 S., R. 64 E.,  
 Sec. 9, NE1/4NE1/4, S1/2NE1/4, SE1/4;  
 Secs. 10 and 11;  
 Sec. 12, W1/2NE1/4, W1/2, and W1/2SE1/4.

NV-18-09-113 T. 5 S., R. 64 E.,  
 Sec. 13, W1/2NE1/4 and W1/2;  
 Secs. 14 and 15;  
 Sec. 16, E1/2, E1/2NW1/4, and SW1/4.

NV-18-09-114 T. 5 S., R. 64 E.,  
 Sec. 17, NW1/4NW1/4;  
 Sec. 18, Lots 1 thru 4, E1/2, E1/2NW1/4, E1/2SW1/4;  
 Sec. 19, Lots 1 thru 4, W1/2NE1/4, E1/2NW1/4, and E1/2SW1/4;  
 Sec. 20, E1/2SE1/4.

NV-18-09-115 T. 5 S., R. 64 E.,  
 Secs. 21 and 22;  
 Sec. 23, Lots 1 thru 5, N1/2, W1/2SW1/4, and NE1/4SE1/4;  
 Sec. 24, W1/2.

NV-18-09-116 T. 5 S., R. 64 E.,  
 Sec. 25, Lots 1 thru 5, E1/2NW1/4, and NE1/4SW1/4;  
 Sec. 26, Lots 1 thru 9, W1/2NW1/4, SW1/4, SW1/4SE1/4;  
 Secs. 27 and 28.

NV-18-09-117 T. 5 S., R. 64 E.,  
 Sec. 29, E1/2 and SE1/4SW1/4;  
 Sec. 30, Lots 1 thru 3, and NE1/4NW1/4;  
 Sec. 32, E1/2, NE1/4NW1/4, S1/2NW1/4, and S1/2.

NV-18-09-118 T. 5 S., R. 64 E.,  
 Secs. 33 and 34;  
 Sec. 35, Lots 1 and 2, W1/2NE1/4, SE1/4NE1/4, W1/2, N1/2SE1/4, and SW1/4SE1/4;  
 Sec. 36, Lots 2, 4, 5, 15 and 16.

NV-18-09-119 T. 6 S., R. 64 E.,  
 Sec. 3, Lots 1 thru 4, S1/2NE1/4, S1/2NW1/4, and S1/2;  
 Sec. 4, Lots 1 thru 4, S1/2NE1/4, S1/2NW1/4, and S1/2.

NV-18-09-120 T. 6 S., R. 64 E.,  
 Sec. 5, Lots 1 thru 4, S1/2NE1/4, S1/2NW1/4, and S1/2;  
 Sec. 6, Lot 1, SE1/4NE1/4, and SE1/4;  
 Sec. 7, Lot 4, E1/2, SE1/4NW1/4, E1/2SW1/4;  
 Sec. 8.

NV-18-09-121 T. 6 S., R. 64 E.,  
 Secs. 9 and 10;  
 Sec. 11, Lots 1 thru 5, W1/2, S1/2SE1/4;  
 Sec. 12, Lots 2 thru 4, and lot 6, W1/2SW1/4, SE1/4SW1/4.

NV-18-09-122 T. 6 S., R. 64 E.,  
 Sec. 13, W1/2;  
 Secs. 14 thru 16.

NV-18-09-123 T. 6 S., R. 64 E.,  
Sec. 17;  
Sec. 18, Lots 1 thru 4, E1/2, E1/2NW1/4, and E1/2SW1/4;  
Sec. 19, Lots 1 thru 4, E1/2, E1/2NW1/4, and E1/2SW1/4;  
Sec. 20.

NV-18-09-124 T. 6 S., R. 64 E.,  
Secs. 21 thru 23;  
Sec. 24, W1/2.

NV-18-09-125 T. 6 S., R. 64 E.,  
Sec. 25, W1/2;  
Secs. 26 thru 28.

NV-18-09-126 T. 6 S., R. 64 E.,  
Sec. 29;  
Sec. 30, Lots 1 thru 4, E1/2, E1/2NW1/4, and E1/2SW1/4;  
Sec. 31, Lots 1 thru 4, E1/2, E1/2NW1/4, and E1/2SW1/4;  
Sec. 32.

NV-18-09-127 T. 6 S., R. 64 E.,  
Secs. 33 thru 35;  
Sec. 36, N1/2NW1/4, SW1/4NW1/4, and W1/2SW1/4.

**Stipulation – Mule Deer Seasonal Habitat  
(#NV-L-02-A-TL)**

**Stipulation: Timing Limitation (TL) -**No surface activity within crucial winter habitat from November 1 through March 31.

**Objective [Purpose]:** To protect mule crucial winter habitat necessary to maintaining the critical life stages of Mule Deer wildlife populations.

**Exception:** The Authorized Officer may grant an exception if an environmental review determines that the action, as proposed or otherwise restricted, does not adversely affect the Mule Deer and its habitat. An exception may also be granted if the proponent, BLM, and other affected interests negotiate mitigation that would satisfactorily offset the anticipated impacts the Mule Deer and its habitat. An exception may be granted for actions designed to enhance the long-term utility or availability of the habitat.

**Modification:** The boundaries of the stipulated area may be modified if the authorized officer, in consultation with Nevada Department of Wildlife, determines that portions of the area no longer contain the crucial winter habitat or that the proposed action would not affect the species and habitat. The dates for the timing restriction may also be modified by the Authorized Officer if new information indicates the dates are not valid for the leasehold. Any modification authorized by this stipulation is subject to 43 C.F.R. 3101.1–4, including provisions requiring public review for issues of major public concern, or substantial modifications.

**Waiver:** The restriction may be waived by the Authorized Officer if it is determined that the described lands do not contain suitable Mule Deer habitat, or are otherwise incapable of serving the requirements of for the species and therefore no longer warrant consideration as a component necessary for their protection. Any waiver authorized by this stipulation is subject to 43 C.F.R. 3101.1–4, including provisions requiring public review for Issues of major public concern, or substantial waivers.

<b>Parcel #</b>	<b>Legal Land Description</b>
	Mount Diablo Meridian, Nevada
NV-18-09-013	T. 25 N., R. 54 E., Sec. 1, Lots 1 and 2, S1/2NE1/4, N1/2SE1/4, and SE1/4SE1/4; Sec. 36, SE1/4SE1/4.
NV-18-09-017	T. 18 N., R. 55 E., Sec. 19, Lots 1 thru 4, SE1/4NW1/4, E1/2SW1/4, and SE1/4.
NV-18-09-018	T. 18 N., R. 55 E., Sec. 30, Lots 1 and 4, NE1/4, E1/2NW1/4, E1/2SW1/4, and W1/2SE1/4; Sec. 31, Lots 1 and 2, and NE1/4NW1/4.
NV-18-09-021	T. 22 N., R. 55 E., Sec. 2, Lots 3 and 4, S1/2NW1/4, W1/2SW1/4; Sec. 3, Lots 1 and 2, lots 5 thru 7, SW1/4NE1/4, and W1/2SE1/4.
NV-18-09-022	T. 22 N., R. 55 E., Sec. 9, E1/2SE1/4; Sec. 10, Lot 1 and lots 3 thru 6, W1/2NE1/4, SE1/4NW1/4, E1/2SW1/4, and SE1/4; Sec. 11, W1/2NW1/4.
NV-18-09-023	T. 22 N., R. 55 E., Sec. 15, Lots 1 thru 4, NE1/4, W1/2NW1/4, W1/2SW1/4, and W1/2SE1/4; Sec. 16, E1/2NE1/4 and E1/2SE1/4.
NV-18-09-024	T. 22 N., R. 55 E., Sec. 21, E1/2NE1/4, SW1/4NE1/4, E1/2SW1/4, and SE1/4; Sec. 22, Lots 1 thru 4, NW1/4NE1/4, W1/2NW1/4, and W1/2SW1/4.
NV-18-09-025	T. 22 N., R. 55 E., Sec. 27, NW1/4, N1/2SW1/4, and SW1/4SW1/4; Sec. 28, E1/2, E1/2NW1/4, SW1/4NW1/4, and SW1/4; Sec. 29, S1/2NE1/4, SE1/4NW1/4, and S1/2.

NV-18-09-026 T. 22 N., R. 55 E.,  
Secs. 32 and 33;  
Sec. 34, W1/2NW1/4 and SW1/4.

NV-18-09-027 T. 23 N., R. 55 E.,  
Sec. 2, Lots 3 thru 10, SW1/4NE1/4, and SE1/4;  
Secs. 3 and 4.

NV-18-09-028 T. 23 N., R. 55 E.,  
Sec. 9, N1/2NE1/4, SE1/4NE1/4, and NE1/4NW1/4;  
Sec. 10, N1/2, NE1/4SW1/4, and SE1/4.

NV-18-09-029 T. 23 N., R. 55 E.,  
Sec. 11, Lots 1 thru 8, and E1/2;  
Sec. 14, Lots 1 thru 8, and E1/2;  
Sec. 15, E1/2.

NV-18-09-030 T. 23 N., R. 55 E.,  
Sec. 22, E1/2.

NV-18-09-031 T. 23 N., R. 55 E.,  
Sec. 23, Lots 1 thru 4, NE1/4, W1/2NW1/4, and W1/2SW1/4;  
Sec. 26, Lots 1 thru 4, W1/2NW1/4, and W1/2SW1/4;  
Sec. 35, Lots 1 thru 8.

NV-18-09-032 T. 23 N., R. 55 E.,  
Sec. 27, E1/2 and E1/2SW1/4.

NV-18-09-033 T. 23 N., R. 55 E.,  
Sec. 34, E1/2 and E1/2NW1/4.

NV-18-09-034 T. 24 N., R. 55 E.,  
Sec. 2, W1/2SW1/4;  
Sec. 3, Lots 2 thru 10, S1/2NE1/4, and SE1/4.

NV-18-09-035 T. 24 N., R. 55 E.,  
Sec. 4, Lots 1 thru 22, SW1/4, and W1/2SE1/4;  
Sec. 5.

NV-18-09-036 T. 24 N., R. 55 E.,  
Sec. 8, E1/2NE1/4, NE1/4SE1/4, and S1/2SE1/4;  
Sec. 9, Lots 1 thru 4, W1/2NE1/4, W1/2, and W1/2SE1/4;  
Sec. 16, Lots 1 thru 4, NW1/4NE1/4, N1/2NW1/4, and SW1/4SE1/4.

NV-18-09-037 T. 24 N., R. 55 E.,  
Sec. 17, N1/2NE1/4;  
Sec. 21, Lots 1 thru 4, W1/2NE1/4, S1/2SW1/4, and W1/2SE1/4.

NV-18-09-038 T. 24 N., R. 55 E.,  
Sec. 27, W1/2NE1/4, W1/2, W1/2SE1/4, and SE1/4SE1/4.

NV-18-09-039 T. 24 N., R. 55 E.,  
Sec. 28, Lots 1 thru 4, W1/2NE1/4, W1/2, and W1/2SE1/4;  
Sec. 29, S1/2SW1/4 and S1/2SE1/4;  
Sec. 32, N1/2, N1/2SW1/4, and SE1/4.

NV-18-09-040 T. 24 N., R. 55 E.,  
Sec. 33, Lots 1 thru 4, W1/2NE1/4, W1/2, and W1/2SE1/4;  
Sec. 34, Lots 1 thru 8, and N1/2.

NV-18-09-041 T. 24 N., R. 55 E.,  
Sec. 35, Lots 4 thru 6.

NV-18-09-043 T. 25 N., R. 55 E.,  
Sec. 4, Lot 4, SW1/4NW1/4, and NW1/4SW1/4;  
Sec. 9, Lots 4, 5 and 12, W1/2SW1/4, and SE1/4SW1/4.

NV-18-09-044 T. 25 N., R. 55 E.,  
Sec. 5, Lots 1 and 2, S1/2NE1/4, W1/2, and SE1/4;  
Sec. 6;  
Sec. 7, E1/2 and N1/2NW1/4;  
Sec. 8.

NV-18-09-046 T. 25 N., R. 55 E.,  
Sec. 16, Lots 3 and 4, SW1/4NE1/4, W1/2, W1/2SE1/4;  
Sec. 17;

Sec. 18, E1/2NE1/4 and E1/2SE1/4.

- NV-18-09-047 T. 25 N., R. 55 E.,  
Sec. 20;  
Sec. 21, Lots 2 thru 4, W1/2NE1/4, W1/2, W1/2SE1/4;  
Sec. 22, W1/2SW1/4.
- NV-18-09-049 T. 25 N., R. 55 E.,  
Sec. 27, W1/2;  
Sec. 28, Lots 1 thru 4, W1/2NE1/4, W1/2, W1/2SE1/4;  
Sec. 33, Lots 1 thru 4, W1/2NE1/4, W1/2, W1/2SE1/4;  
Sec. 34, Lots 1 thru 8.
- NV-18-09-050 T. 25 N., R. 55 E.,  
Sec. 29, E1/2 and NE1/4NW1/4;  
Sec. 31, S1/2SE1/4 and S1/2;  
Sec. 32.
- NV-18-09-051 T. 26 N., R. 55 E.,  
Sec. 19, Lot 4 and SE1/4SW1/4.
- NV-18-09-052 T. 26 N., R. 55 E.,  
Sec. 29, SW1/4NW1/4 and S1/2;  
Sec. 30, Lots 1 thru 4, E1/2, E1/2NW1/4, and E1/2SW1/4.
- NV-18-09-053 T. 26 N., R. 55 E.,  
Sec. 31, Lots 1 thru 7, NE1/4, E1/2NW1/4, NE1/4SW1/4, and N1/2SE1/4;  
Sec. 32, Los 1 thru 4, N1/2, N1/2SW1/4, and N1/2SE1/4;  
Sec. 33, Lot 4, W1/2NW1/4, and NW1/4SW1/4.
- NV-18-09-074 T. 21 N., R. 56 E.,  
Sec. 1, Lots 1 thru 4, SW1/4NE1/4, S1/2NW1/4, and S1/2.
- NV-18-09-078 T. 21 N., R. 56 E.,  
Sec. 12, NE1/4 and NE1/4NW1/4.
- NV-18-09-080 T. 24 N., R. 56 E.,  
Sec. 1, Lots 1 thru 3, S1/2NE1/4, SE1/4NW14/, NE1/4SW1/4, and SE1/4.
- NV-18-09-083 T. 24 N., R. 56 E.,  
Sec. 12, E1/2 and E1/2SW1/4.
- NV-18-09-084 T. 24 N., R. 56 E.,  
Sec. 13, N1/2, N1/2SW1/4, SE1/4SW1/4, and SE1/4.
- NV-18-09-087 T. 24 N., R. 56 E.,  
Sec. 24, E1/2.
- NV-18-09-088 T. 24 N., R. 56 E.,  
Sec. 25, N1/2NE1/4 and SE1/4NE1/4.

**Stipulation – Elk Calving Habitat  
(#NV-L-03-B-TL)**

Stipulation: Timing Limitation (TL) -No surface activity within Elk calving areas from April 15 through June 30.

Objective [Purpose]: To protect Elk calving habitat necessary to maintaining the critical life stages of Elk wildlife populations.

Exception: The Authorized Officer may grant an exception if an environmental review determines that the action, as proposed or otherwise restricted, does not adversely affect the Elk and its habitat. An exception may also be granted if the proponent, BLM, and other affected interests negotiate mitigation that would satisfactorily offset the anticipated impacts to Elk and its habitat. An exception may be granted for actions designed to enhance the long-term utility or availability of the habitat.

Modification: The boundaries of the stipulated area may be modified if the authorized officer, in consultation with Nevada Department of Wildlife, determines that portions of the area no longer contain the elk calving habitat or that the proposed action would not affect the species and habitat. The dates for the timing restriction may also be modified by the Authorized Officer if new information indicates the dates are not valid for the leasehold. Any modification authorized by this stipulation is subject to 43 C.F.R. 3101.1-4, including provisions requiring public review for issues of major public concern, or substantial modifications.

Waiver: The restriction may be waived by the Authorized Officer if it is determined that the described lands do not contain suitable elk habitat, or are otherwise incapable of serving the requirements of for the species and therefore no longer warrant consideration as a component necessary for their protection. Any waiver authorized by this stipulation is subject to 43 C.F.R. 3101.1-4, including provisions requiring public review for issues of major public concern, or substantial waivers.

<b>Parcel #</b>	<b>Legal Land Description</b>
	Mount Diablo Meridian, Nevada
NV-18-09-066	T. 20 N., R. 56 E., Sec. 1, Lots 1 thru 4, S1/2NE1/4, S1/2NW1/4, and S1/2; Sec. 2, Lots 1 thru 4, S1/2NE1/4, S1/2NW1/4, and S1/2; Sec. 3, Lots 3 and 4, S1/2NW1/4, and S1/2; Sec. 10.
NV-18-09-067	T. 20 N., R. 56 E., Sec. 4, Lot 3, SE1/4NW1/4, and NE1/4SW1/4.
NV-18-09-068	T. 20 N., R. 56 E., Sec. 9, E1/2; Sec. 16, N1/2NE1/4 and SE1/4SE1/4.
NV-18-09-069	T. 20 N., R. 56 E., Secs. 11, 13 and 14.
NV-18-09-071	T. 20 N., R. 56 E., Sec. 23, N1/2; Sec. 24, N1/2 and N1/2SE1/4.
NV-18-09-074	T. 21 N., R. 56 E., Sec. 1, Lots 1 thru 4, SW1/4NE1/4, S1/2NW1/4, and S1/2; Sec. 2, Lots 1 thru 4, S1/2NE1/4, S1/2NW1/4, and S1/2.
NV-18-09-075	T. 21 N., R. 56 E., Sec. 3, Lots 1 thru 4, S1/2NE1/4, S1/2NW1/4, and S1/2; Sec. 4, Lots 1 and 2, S1/2NE1/4, E1/2SW1/4, and SE1/4.
NV-18-09-077	T. 21 N., R. 56 E., Sec. 9, E1/2, NE1/4NW1/4, NE1/4SW1/4, S1/2SW1/4, and SE1/4.
NV-18-09-078	T. 21 N., R. 56 E., Secs. 10 thru 12.

NV-18-09-080 T. 24 N., R. 56 E.,  
 Sec. 1, Lots 1 thru 4, S1/2NE1/4, S1/2NW1/4, and S1/2;  
 Sec. 2, Lots 1 thru 3, S1/2NE1/4, SE1/4NW1/4, E1/2SW1/4, and SE1/4.

NV-18-09-083 T. 24 N., R. 56 E.,  
 Sec. 11, E1/2, E1/2NW1/4, and E1/2SW1/4;  
 Sec. 12.

NV-18-09-084 T. 24 N., R. 56 E.,  
 Sec. 13;  
 Sec. 14, E1/2 and E1/2SW1/4.

NV-18-09-087 T. 24 N., R. 56 E.,  
 Sec. 23, E1/2 and NE1/4NW1/4;  
 Sec. 24.

NV-18-09-088 T. 24 N., R. 56 E.,  
 Sec. 25, N1/2, N1/2SW1/4, SE1/4SW1/4, and SE1/4;  
 Sec. 26, NE1/4NE1/4.

NV-18-09-091 T. 24 N., R. 56 E.,  
 Sec. 36, E1/2.

NV-18-09-092 T. 25 N., R. 56 E.,  
 Sec. 8, E1/2NE1/4 and NE1/4SE1/4.

NV-18-09-094 T. 25 N., R. 56 E.,  
 Sec. 27, NE1/4, NE1/4NW1/4, and NE1/4SE1/4.

NV-18-09-100 T. 10 N., R. 58 E.,  
 Sec. 6, Lots 1 and 2, S1/2NE1/4, and E1/2SE1/4.

NV-18-09-101 T. 11 N., R. 58 E.,  
 Sec. 31, Lots 1 and 2, N1/2NE1/4, SW1/4NE1/4, E1/2NW1/4, and E1/2SW1/4.

NV-18-09-102 T. 25 N., R. 59 E.,  
 Sec. 1, Lots 1 thru 4, S1/2NE1/4, S1/2NW1/4, and S1/2;  
 Sec. 2, Lots 1 thru 4, S1/2NE1/4, S1/2NW1/4, and S1/2;  
 Secs. 11 and 12.

NV-18-09-103 T. 25 N., R. 59 E.,  
 Secs. 25 and 36.

NV-18-09-104 T. 26 N., R. 59 E.,  
 Secs. 22 thru 24.

NV-18-09-105 T. 26 N., R. 59 E.,  
 Secs. 25 thru 27.

NV-18-09-106 T. 26 N., R. 59 E.,  
 Secs. 33 thru 36.

NV-18-09-108 T. 5 S., R. 65 E.,  
 Sec. 32, S1/2SE1/4;  
 Sec. 33, S1/2;  
 Sec. 34, S1/2NE1/4, S1/2NW1/4, and S1/2;  
 Sec. 35, SW1/4NE1/4, S1/2NW1/4, and S1/2.

NV-18-09-109 T. 5 S., R. 65 E.,  
 Sec. 36, W1/2SW1/4 and SE1/4SW1/4.

NV-18-09-135 T. 6 S., R. 65 E.,  
 Sec. 1, SW1/4NE1/4, W1/2, W1/2SE1/4, and SE1/4SE1/4;  
 Secs. 2 and 3.

NV-18-09-136 T. 6 S., R. 65 E.,  
 Secs. 4 and 5;  
 Sec. 6, SE1/4NE1/4 and E1/2SE1/4;  
 Sec. 7, E1/2NE1/4 and E1/2SE1/4.

NV-18-09-137 T. 6 S., R. 65 E.,  
 Secs. 8 thru 11.

NV-18-09-138	T. 6 S., R. 65 E., Secs. 12 thru 15.
NV-18-09-139	T. 6 S., R. 65 E., Secs. 16 and 17; Sec. 18, E1/2NE1/4 and E1/2SE1/4.
NV-18-09-140	T. 6 S., R. 65 E., Sec. 20, N1/2, N1/2SW1/4, SE1/4SW1/4, and SE1/4; Secs. 24 thru 27.
NV-18-09-141	T. 6 S., R. 65 E., Secs. 21 thru 23.
NV-18-09-142	T. 6 S., R. 65 E., Sec. 28; Sec. 29, E1/2 and E1/2NW1/4.
NV-18-09-143	T. 6 S., R. 65 E., Sec. 32, E1/2, SE1/4NW1/4, and SW1/4; Secs. 33 and 34.
NV-18-09-144	T. 6 S., R. 65 E., Secs. 35 and 36.



**Stipulation – Greater Sage Grouse (GRSG) Lekking Habitat –  
General Habitat Management Area (GHMA)  
(#NV-B-16-B-TL)**

Stipulation: Timing Limitation (TL) - Seasonal protection within 4.0 miles of active or pending GRSG leks in General Management Areas (GHMA) – Manage fluid mineral resources with timing limitations. NSO would be allowed within 4.0 miles of active or pending GRSG leks from March 1 through May 15.

Objective [Purpose]: To protect GRSG lekking habitat.

Exception: The Authorized Officer may grant an exception where an environmental review and consultation with the appropriate state agency (Nevada Department of Wildlife, Sagebrush Ecosystem Technical Team, California Department of Fish and Wildlife) determines that the action, as proposed or otherwise restricted, does not adversely affect GRSG or its habitat. An exception may also be granted if the proponent, the BLM, and the appropriate state agency negotiate mitigation that would provide a clear net conservation gain to GRSG and its habitat.

Modification: The Authorized Officer may modify the size and shape of the restricted area or the period of limitation where an environmental review and consultation with the appropriate state agency (Nevada Department of Wildlife, Sagebrush Ecosystem Technical Team, California Department of Fish and Wildlife) determines that the action, as proposed or otherwise restricted, does not adversely affect GRSG or its habitat.

Waiver: The Authorized Officer may waive the stipulation where an environmental review and consultation with the appropriate state agency (Nevada Department of Wildlife, Sagebrush Ecosystem Technical Team, California Department of Fish and Wildlife) determines that the described lands do not contain GRSG or suitable habitat or are otherwise incapable of serving the requirements of GRSG and therefore no longer warrant consideration as a component necessary for their protection.

<b>Parcel #</b>	<b>Legal Land Description</b>
	Mount Diablo Meridian, Nevada
NV-18-09-006	T. 16 N., R. 54 E., Sec. 1, W1/2NE1/4, SE1/4NE1/4, N1/2NW1/4, SE1/4NW1/4, and N1/2SE1/4;
NV-18-09-014	T. 18 N., R. 55 E., Sec. 13, S1/2NW1/4, N1/2SW1/4, and SW1/4SW1/4; Sec. 14, SE1/4.
NV-18-09-016	T. 18 N., R. 55 E., Sec. 5, Lots 3 and 4, S1/2NW1/4, and W1/2SW1/4; Sec. 6, E1/2SE1/4;
NV-18-09-018	T. 18 N., R. 55 E., Sec. 31, Lots 3 and 4, NE1/4NE1/4, S1/2NE1/4, E1/2SW1/4, and SE1/4.
NV-18-09-022	T. 22 N., R. 55 E., Sec. 8, NE1/4, E1/2NW1/4, E1/2SW1/4, and SE1/4; Sec. 9, NW1/4, N1/2SW1/4, SW1/4SW1/4, SE1/4NE1/4, and NE1/4SE1/4; Sec. 10, Lots 3, 5 and 6, SE1/4NW1/4, E1/2SW1/4, and SE1/4.
NV-18-09-023	T. 22 N., R. 55 E., Sec. 15, Lots 1 thru 4, E1/2, W1/2NW1/4, and W1/2SW1/4; Sec. 16, E1/2NE1/4, NE1/4SE1/4, and S1/2SE1/4; Sec. 17, N1/2NE1/4 and NE1/4NW1/4.

NV-18-09-024 T. 22 N., R. 55 E.,  
 Sec. 20, NE1/4SW1/4, S1/2SW1/4, and SE1/4;  
 Sec. 21, E1/2, S1/2NW1/4, and SW1/4;  
 Sec. 22, Lots 1 thru 4, E1/2, W1/2NW1/4, and W1/2SW1/4.

NV-18-09-025 T. 22 N., R. 55 E.,  
 Secs. 27 thru 29.

NV-18-09-026 T. 22 N., R. 55 E.,  
 Sec. 30, SE1/4SE1/4;  
 Sec. 31, E1/2;  
 Secs. 32 and 33;  
 Sec. 34, NE1/4, N1/2NW1/4, SW1/4NW1/4, SW1/4, and S1/2SE1/4.

NV-18-09-027 T. 23 N., R. 55 E.,  
 Sec. 2, Lots 1 thru 4 and lot 10, S1/2NE1/4, and SE1/4;  
 Sec. 3, W1/2SW1/4;  
 Sec. 4, NW1/4NE1/4, S1/2NE1/4, NE1/4NW1/4, S1/2NW1/4, N1/2SW1/4,  
 SE1/4SW1/4, and SE1/4.

NV-18-09-028 T. 23 N., R. 55 E.,  
 Sec. 9, N1/2NE1/4;  
 Sec. 10, NW1/4NW1/4.

NV-18-09-029 T. 23 N., R. 55 E.,  
 Sec. 11, Lots 1 thru 6, NE1/4, and N1/2SE1/4.

NV-18-09-034 T. 24 N., R. 55 E.,  
 Sec. 3, Lots 5 thru 10, SW1/4NE1/4, and NW1/4SE1/4.

NV-18-09-035 T. 24 N., R. 55 E.,  
 Sec. 4, Lots 10 thru 12 and lots 19 and 20.

NV-18-09-036 T. 24 N., R. 55 E.,  
 Sec. 8, NE1/4, SE1/4NW1/4, and S1/2;  
 Sec. 9, SW1/4SW1/4;  
 Sec. 16, Lot 4, W1/2NW1/4, W1/2SW1/4, SE1/4SW1/4, and SW1/4SE1/4.

NV-18-09-037 T. 24 N., R. 55 E.,  
 Sec. 17, NE1/4, E1/2NW1/4, NE1/4SW1/4, and SE1/4;  
 Sec. 20, NE1/4 and E1/2SE1/4;  
 Sec. 21, Lots 1 thru 4, W1/2NE1/4, W1/2, and W1/2SE1/4.

NV-18-09-038 T. 24 N., R. 55 E.,  
 Sec. 26, S1/2SW1/4;  
 Sec. 27, SW1/4NE1/4, W1/2NW1/4, SE1/4NW1/4, and S1/2;

NV-18-09-039 T. 24 N., R. 55 E.,  
 Sec. 28, Lots 1 thru 4, W1/2NE1/4, W1/2, and W1/2SE1/4;  
 Sec. 29, E1/2;  
 Sec. 32, NE1/4, and N1/2SE1/4.

NV-18-09-040 T. 24 N., R. 55 E.,  
 Sec. 33, Lots 1 thru 3, W1/2NE1/4, NW1/4, N1/2SW1/4, and SW1/4SW1/4;  
 Sec. 34, Lots 1 thru 8, and N1/2.

NV-18-09-041 T. 24 N., R. 55 E.,  
 Sec. 35, Lots 1 thru 8, and N1/2;  
 Sec. 36, Lots 2 thru 7, W1/2NE1/4, and NW1/4.

NV-18-09-042 T. 25 N., R. 55 E.,  
 Sec. 1, Lots 1 thru 4, S1/2NE1/4, and S1/2NW1/4;  
 Sec. 2, Lots 1 thru 4.

NV-18-09-051 T. 26 N., R. 55 E.,  
 Sec. 20, E1/2 and E1/2NW1/4;  
 Sec. 21, SW1/4SW1/4.

NV-18-09-052 T. 26 N., R. 55 E.,  
 Sec. 28, Lot 4, W1/2, and W1/2SE1/4;  
 Sec. 29, N1/2NE1/4, SE1/4NE1/4, and NE1/4SE1/4.

NV-18-09-053 T. 26 N., R. 55 E.,  
 Sec. 33, Lots 1 thru 3, W1/2NE1/4, and NE1/4NW1/4.

NV-18-09-066 T. 20 N., R. 57 E.,  
 Sec. 1, Lot 1, SE1/4NE1/4, NE1/4SE1/4, and S1/2SE1/4.

NV-18-09-069 T. 20 N., R. 56 E.,  
 Sec. 13, SE1/4NE1/4 and NE1/4SE1/4.

NV-18-09-082 T. 24 N., R. 56 E.,  
 Sec. 9, SW1/4SW1/4.

NV-18-09-085 T. 24 N., R. 56 E.,  
 Sec. 16, W1/2 and SW1/4SE1/4.

NV-18-09-086 T. 24 N., R. 56 E.,  
 Sec. 21, NW1/4NW1/4.

NV-18-09-087 T. 24 N., R. 56 E.,  
 Sec. 22, E1/2SW1/4 and SE1/4;  
 Sec. 23, S1/2;  
 Sec. 24, SW1/4, W1/2SE1/4, and SE1/4SE1/4.

NV-18-09-088 T. 24 N., R. 56 E.,  
 Sec. 25, NE1/4, N1/2NW1/4, SE1/4NW1/4, S1/2SW1/4, and S1/2SE1/4;  
 Sec. 26, N1/2NE1/4 and N1/2NW1/4;  
 Sec. 27, N1/2NE1/4, SW1/4NE1/4, and NW1/4.

NV-18-09-089 T. 24 N., R. 56 E.,  
 Sec. 28, S1/2NE1/4.

NV-18-09-090 T. 24 N., R. 56 E.,  
 Sec. 31, E1/2SE1/4;  
 Sec. 32, S1/2NE1/4, S1/2NW1/4, and S1/2;  
 Sec. 33, SW1/4NW1/4, W1/2SW1/4, SE1/4SW1/4, and SE1/4.

NV-18-09-091 T. 24 N., R. 56 E.,  
 Sec. 34, SW1/4SW1/4;  
 Sec. 35, E1/2NE1/4 and SE1/4;  
 Sec. 36.

NV-18-09-092

T. 25 N., R. 56 E.,  
Sec. 6, Lots 1 thru 5.

NV-18-09-096

T. 26 N., R. 56 E.,  
Sec. 31, Lot 4, SE1/4SW1/4, NE1/4SE1/4, and S1/2SE1/4.

**Stipulation – Greater Sage Grouse (GRSG) Winter Habitat –  
General Habitat Management Area (GHMA)  
(#NV-L-16-C-TL)**

Stipulation: Timing Limitation (TL) – No surface occupancy would be allowed in GRSG winter habitat from November 1 through February 28 in GHMA.

Objective [Purpose]: To protect GRSG winter habitat.

Exception: The Authorized Officer may grant an exception where an environmental review and consultation with the appropriate state agency (Nevada Department of Wildlife, Sagebrush Ecosystem Technical Team, California Department of Fish and Wildlife) determines that the action, as proposed or otherwise restricted, does not adversely affect GRSG or its habitat. An exception may also be granted if the proponent, the BLM, and the appropriate state agency negotiate mitigation that would provide a clear net conservation gain to GRSG and its habitat.

Modification: The Authorized Officer may modify the size and shape of the restricted area or the period of limitation where an environmental review and consultation with the appropriate state agency (Nevada Department of Wildlife, Sagebrush Ecosystem Technical Team, California Department of Fish and Wildlife) determines that the action, as proposed or otherwise restricted, does not adversely affect GRSG or its habitat.

Waiver: The Authorized Officer may waive the stipulation where an environmental review and consultation with the appropriate state agency (Nevada Department of Wildlife, Sagebrush Ecosystem Technical Team, California Department of Fish and Wildlife) determines that the described lands do not contain GRSG or suitable habitat or are otherwise incapable of serving the requirements of GRSG and therefore no longer warrant consideration as a component necessary for their protection.

<b>Parcel #</b>	<b>Legal Land Description</b>
	Mount Diablo Meridian, Nevada
NV-18-09-006	T. 16 N., R. 54 E., Sec. 1, W1/2NE1/4, SE1/4NE1/4, W1/2, and SE1/4; Sec. 2, Lots 1 and 2, S1/2NE1/4, SE1/4SW1/4, and SE1/4; Sec. 12, E1/2NE1/4 and N1/2NW1/4.
NV-18-09-007	T. 16 N., R. 54 E., Sec. 11, NE1/4.
NV-18-09-013	T. 25 N., R. 54 E., Sec. 13, SW1/4SE1/4; Sec. 24, E1/2; Sec. 25, E1/2; Sec. 36, N1/2NE1/4, SE1/4NE1/4, and E1/2SE1/4.
NV-18-09-014	T. 18 N., R. 55 E., Sec. 13, S1/2NW1/4, N1/2SW1/4, and SW1/4SW1/4; Sec. 14, N1/2SE1/4 and SE1/4SE1/4.
NV-18-09-015	T. 18 N., R. 55 E., Sec. 3, Lots 3 and 4, S1/2NW1/4 and SW1/4.
NV-18-09-016	T. 18 N., R. 55 E., Sec. 5, Lots 1 thru 4, S1/2NE1/4, S1/2NW1/4, and S1/2; Sec. 6, E1/2SE1/4; Sec. 7, Lot 4, S1/2NE1/4, NE1/4SW1/4 and SE1/4; Sec. 8, NE1/4 and S1/2.

NV-18-09-017 T. 18 N., R. 55 E.,  
 Sec. 17, N1/2, SW1/4, N1/2SE1/4 and SW1/4SE1/4;  
 Sec. 18, Lots 1 thru 4, E1/2, E1/2NW1/4, and E1/2SW1/4;  
 Sec. 19, Lots 1 thru 4, NE1/4, E1/2NW1/4, E1/2SW1/4, and W1/2SE1/4.

NV-18-09-018 T. 18 N., R. 55 E.,  
 Sec. 30, Lot 1, E1/2NW1/4 and SE1/4SE1/4;  
 Sec. 31, NE1/4NE1/4.

NV-18-09-020 T. 20 N., R. 55 E.,  
 Sec. 26, NW1/4NW1/4.

NV-18-09-021 T. 22 N., R. 55 E.,  
 Sec. 2, Lot 4, SW1/4NE1/4, S1/2NW1/4, and W1/2SW1/4;  
 Sec. 3, Lots 1, 5, 6 and 7, and SW1/4SE1/4;  
 Sec. 4, Lots 1 thru 4, and S1/2NW1/4;  
 Sec. 4, W1/2SW1/4.

NV-18-09-022 T. 22 N., R. 55 E.,  
 Sec. 8, NE1/4, E1/2NW1/4, E1/2SW1/4, and SE1/4;  
 Sec. 9, NW1/4, N1/2SW1/4, SW1/4SW1/4; SE1/4NE1/4, and E1/2SE1/4;  
 Sec. 10, Lots 1 thru 6, W1/2NE1/4, E1/2NW1/4, E1/2SW1/4, and SE1/4;  
 Sec. 11, W1/2NW1/4.

NV-18-09-023 T. 22 N., R. 55 E.,  
 Sec. 15, Lots 1 thru 4, E1/2, W1/2NW1/4, and W1/2SW1/4;  
 Sec. 16, E1/2NE1/4, NE1/4SE1/4, and S1/2SE1/4;  
 Sec. 17, NW1/4NE1/4 and NE1/4NW1/4.

NV-18-09-024 T. 22 N., R. 55 E.,  
 Sec. 20, NE1/4SW1/4, S1/2SW1/4, and SE1/4;  
 Sec. 21, E1/2, S1/2NW1/4, and SW1/4;  
 Sec. 22, Lots 1 thru 4, E1/2, W1/2NW1/4, and W1/2SW1/4.

NV-18-09-025 T. 22 N., R. 55 E.,  
 Secs. 27 thru 29.

NV-18-09-026 T. 22 N., R. 55 E.,  
 Sec. 30, SE1/4SE1/4;  
 Sec. 31, E1/2;  
 Secs. 32 and 33;  
 Sec. 34, NE1/4, N1/2NW1/4, SW1/4NW1/4, SW1/4, and S1/2SE1/4.

NV-18-09-027 T. 23 N., R. 55 E.,  
 Sec. 2, Lots 1 thru 4 and lot 10, S1/2NE1/4, and SE1/4;  
 Sec. 4, NW1/4NE1/4, S1/2NE1/4, NE1/4NW1/4, S1/2NW1/4, N1/2SW1/4, and  
 NW1/4SE1/4.

NV-18-09-029 T. 23 N., R. 55 E.,  
 Sec. 11, Lots 1 thru 8, and E1/2;  
 Sec. 14, Lots 1 thru 6 and lot 8, and E1/2;  
 Sec. 15, SE1/4NE1/4 and NE1/4SE1/4.

NV-18-09-030 T. 23 N., R. 55 E.,  
 Sec. 21, N1/2NE1/4, SW1/4NE1/4, E1/2NW1/4, NE1/4SW1/4, and NW1/4SE1/4.

NV-18-09-031 T. 23 N., R. 55 E.,  
 Sec. 23, Lots 1 and 2, and NE1/4.

NV-18-09-032 T. 23 N., R. 55 E.,  
 Sec. 28, SW1/4NE1/4, S1/2NW1/4, and S1/2.

NV-18-09-033 T. 23 N., R. 55 E.,  
 Sec. 32, NE1/4SE1/4 and S1/2SE1/2;  
 Sec. 33;  
 Sec. 34, W1/2NW1/4, SE1/4NW1/4, and SW1/4.

NV-18-09-034 T. 24 N., R. 55 E.,  
 Sec. 3, Lots 2 thru 10, SW1/4NE1/4, and NW1/4SE1/4.

NV-18-09-035 T. 24 N., R. 55 E.,  
 Sec. 4, Lot 5 and lots 9 thru 12 and lots 19 and 20;  
 Sec. 5, N1/2.

NV-18-09-036 T. 24 N., R. 55 E.,  
 Sec. 8;  
 Sec. 9, SW1/4SW1/4;  
 Sec. 16, Lot 4, W1/2 NW1/4, W1/2SW1/4, SE1/4SW1/4, and SW1/4SE1/4.

NV-18-09-037 T. 24 N., R. 55 E.,  
 Sec. 17, NE1/4, E1/2NW1/4, NE1/4SW1/4, and SE1/4;  
 Sec. 20, NE1/4 and E1/2SE1/4;  
 Sec. 21, Lots 1 thru 4, W1/2NE1/4, W1/2, and W1/2SE1/4.

NV-18-09-038 T. 24 N., R. 55 E.,  
 Sec. 26, S1/2SW1/4;  
 Sec. 27, SW1/4NE1/4, W1/2NW1/4, SE1/4NW1/4, and S1/2;

NV-18-09-039 T. 24 N., R. 55 E.,  
 Sec. 28, Lots 1 thru 4, W1/2NE1/4, W1/2, and W1/2SE1/4;  
 Sec. 29, E1/2;  
 Sec. 32, NE1/4, and N1/2SE1/4.

NV-18-09-040 T. 24 N., R. 55 E.,  
 Sec. 33, Lots 1 thru 3, NW1/4NE1/4, NW1/4, N1/2SW1/4, and SW1/4SW1/4;  
 Sec. 34, Lots 1 thru 8, and N1/2.

NV-18-09-041 T. 24 N., R. 55 E.,  
 Sec. 35, Lots 1 thru 8, and N1/2;  
 Sec. 36, Lots 2 thru 7, W1/2NE1/4, and NW1/4.

NV-18-09-042 T. 25 N., R. 55 E.,  
 Sec. 1, Lots 1 thru 4, S1/2NE1/4, S1/2NW1/4, and S1/2;  
 Sec. 2, Lots 1 thru 4, S1/2NE1/4, SE1/4NW1/4, NE1/4SW1/4, and SE1/4;  
 Sec. 11, E1/2, W1/2NW1/4, and SW1/4SW1/4;  
 Sec. 12.

NV-18-09-043 T. 25 N., R. 55 E.,  
 Sec. 3, Lots 3 and 4, SW1/4NE1/4, S1/2NW1/2, SW1/4, W1/2SE1/4, and SE1/4SE1/4;  
 Sec. 4, Lots 1 thru 4, S1/2NE1/4, S1/2NW1/4, and S1/2;  
 Sec. 9. Lots 1 thru 14, SW1/4, and W1/2SE1/4;  
 Sec. 10.

NV-18-09-044 T. 25 N., R. 55 E.,  
 Sec. 5, Lots 1 and 2, and S1/2NE1/4;  
 Sec. 5, E1/2NW1/4, E1/2SW1/4, and SE1/4;  
 Sec. 8, E1/2.

NV-18-09-045 T. 25 N., R. 55 E.,  
 Sec. 13;  
 Sec. 14, NE1/4, W1/2NW1/4, W1/2SW1/4, N1/2SE1/4, and SE1/4SE1/4;  
 Sec. 23, Lots 1 thru 8, and E1/2NE1/4;  
 Sec. 24, Lots 1 thru 8, and N1/2.

NV-18-09-046 T. 25 N., R. 55 E.,  
 Sec. 15;  
 Sec. 16, Lots 1 thru 4, W1/2NE1/4, W1/2, and W1/2SE1/4;  
 Sec. 17, E1/2.

NV-18-09-047 T. 25 N., R. 55 E.,  
 Sec. 20, E1/2;  
 Sec. 21, Lots 1 thru 4, W1/2NE1/4, W1/2, W1/2SE1/4;  
 Sec. 22, Lots 1 thru 8, W1/2.

NV-18-09-048 T. 25 N., R. 55 E.,  
 Sec. 25;  
 Sec. 26, E1/2NE1/4, W1/2NW1/4, and SE1/4;  
 Sec. 35, NE1/4, NE1/4NW1/4, S1/2NW1/4, and NW1/4SW1/4;  
 Sec. 36, NW1/4.

NV-18-09-049 T. 25 N., R. 55 E.,  
 Sec. 27, Lots 1 thru 4, W1/2, and SE1/4;  
 Sec. 28, Lots 1 thru 4, W1/2NE1/4, W1/2, and W1/2SE1/4;  
 Sec. 33, Lots 1 and 2, NW1/4NE1/4, and N1/2NW1/4;  
 Sec. 34, Lots 1 thru 5 and lot 8; and NW1/4NE1/4.

NV-18-09-050 T. 25 N., R. 55 E.,  
 Sec. 30, S1/2SW1/4;  
 Sec. 31;  
 Sec. 32, SW1/4NE1/4, W1/2, and SE1/4.

NV-18-09-051 T. 26 N., R. 55 E.,  
 Sec. 19, N1/2NE1/4 and SE1/4NE1/4;  
 Sec. 20, N1/2, N1/2SW1/4, SE1/4SW1/4, and SE1/4;  
 Sec. 21, SW1/4SW1/4.



NV-18-09-052 T. 26 N., R. 55 E.,  
 Sec. 28, Lot 4, W1/2, and W1/2SE1/4;  
 Sec. 29, E1/2 and SW1/4;  
 Sec. 30, Lots 1 thru 4, S1/2NE1/4, E1/2NW1/4, E1/2SW1/4, and SE1/4.

NV-18-09-053 T. 26 N., R. 55 E.,  
 Sec. 31, N1/2NE1/4 and SE1/4NE1/4;  
 Sec. 32, Lots 1 thru 4, N1/2, N1/2SW1/4, and N1/2SE1/4;  
 Sec. 33, Lots 1 thru 7, W1/2NE1/4, NW1/4, N1/2SW1/4, and NW1/4SE1/4.

NV-18-09-066 T. 20 N., R. 57 E.,  
 Sec. 1, SE1/4SE1/4.

NV-18-09-069 T. 20 N., R. 56 E.,  
 Sec. 11, SE1/4;  
 Sec. 13, SE1/4NE1/4, W1/2, and NE1/4SE1/4;  
 Sec. 14, E1/2.

NV-18-09-071 T. 20 N., R. 56 E.,  
 Sec. 23, NE1/4NE1/4;  
 Sec. 24, NW1/4NW1/4.

NV-18-09-074 T. 21 N., R. 56 E.,  
 Sec. 1, Lots 3 and 4, S1/2NW1/4, and SW1/4;  
 Sec. 2, SE1/4NE1/4 and E1/2SE1/4.

NV-18-09-075 T. 21 N., R. 56 E.,  
 Sec. 4, Lots 1 thru 4, S1/2NE1/4, S1/2NW1/4, NW1/4SW1/4, E1/2SW1/4, and SE1/4.

NV-18-09-077 T. 21 N., R. 56 E.,  
 Sec. 9, NE1/4, NE1/4NW1/4, E1/2SW1/4, and SE1/4.

NV-18-09-078 T. 21 N., R. 56 E.,  
 Sec. 11, E1/2NE1/4;  
 Sec. 12, NW1/4.

NV-18-09-080 T. 24 N., R. 56 E.,  
 Sec. 2, SW1/4NW1/4 and W1/2SW1/4;  
 Sec. 3, Lots 2 thru 4, S1/2NE1/4, S1/2NW1/4, and S1/2.

NV-18-09-081 T. 24 N., R. 56 E.,  
 Sec. 4, Lots 1 thru 4, S1/2NE1/4, S1/2NW1/4, and S1/2;  
 Sec. 5, Lots 1 thru 4, S1/2NE1/4, S1/2NW1/4, NE1/4SW1/4, and SE1/4;  
 Sec. 6, Lot 1.

NV-18-09-082 T. 24 N., R. 56 E.,  
 Sec. 8, NE1/4NE1/4;  
 Sec. 9, E1/2, N1/2NW1/4, and S1/2SW1/4.

NV-18-09-083 T. 24 N., R. 56 E.,  
 Sec. 10;  
 Sec. 11, W1/2NW1/4, W1/2SW1/4, and SE1/4SW1/4.

NV-18-09-084 T. 24 N., R. 56 E.,  
 Sec. 13, S1/2NE1/4 and S1/2;  
 Sec. 14, W1/2NE1/4, SE1/4NE1/4, and W1/2,SE1/4;  
 Sec. 15.

NV-18-09-085 T. 24 N., R. 56 E.,  
 Sec. 16.

NV-18-09-086 T. 24 N., R. 56 E.,  
 Sec. 21, N1/2NE1/4 and NW1/4NW1/4.

NV-18-09-087 T. 24 N., R. 56 E.,  
 Sec. 22, N1/2, E1/2SW1/4, and SE1/4;  
 Sec. 23;  
 Sec. 24.

NV-18-09-088 T. 24 N., R. 56 E.,  
 Sec. 25, NE1/4, N1/2NW1/4, S1/2SW1/4, and S1/2SE1/4;  
 Sec. 26, N1/2NW1/4;  
 Sec. 27, N1/2NE1/4, SW1/4NE1/4, and NW1/4.

NV-18-09-089 T. 24 N., R. 56 E.,  
 Sec. 28, S1/2NE1/4.

NV-18-09-090 T. 24 N., R. 56 E.,  
 Sec. 31, E1/2SE1/4;  
 Sec. 32, S1/2NE1/4, S1/2NW1/4, and S1/2;  
 Sec. 33, SW1/4NW1/4, W1/2SW1/4, SE1/4SW1/4, and SE1/4.

NV-18-09-091 T. 24 N., R. 56 E.,  
 Sec. 34, SW1/4SW1/4;  
 Sec. 35, E1/2NE1/4, N1/2SE1/4, and SW1/4SE1/4;  
 Sec. 36, N1/2.

NV-18-09-092 T. 25 N., R. 56 E.,  
 Sec. 6, Lots 1 thru 7, S1/2NE1/4, SE1/4NW1/4, E1/2SW1/4, N1/2SE1/4, and  
 SW1/4SE1/4;  
 Sec. 7, Lots 1 thru 4, E1/2, E1/2NW1/4, and E1/2SW1/4;  
 Sec. 8, W1/2 and SW1/4SE1/4.

NV-18-09-093 T. 25 N., R. 56 E.,  
 Sec. 17, W1/2NE1/4, W1/2, and W1/2SE1/4;  
 Sec. 18, Lots 1 thru 4, E1/2, E1/2NW1/4, E1/2SW1/4.

NV-18-09-094 T. 25 N., R. 56 E.,  
 Sec. 28, NW1/4, N1/2SW1/4, and SW1/4SW1/4.

NV-18-09-095 T. 25 N., R. 56 E.,  
 Sec. 31, Lots 1 thru 3, E1/2, E1/2NW1/4, and NE1/4SW1/4;  
 Sec. 32;  
 Sec. 33, W1/2NW1/4, W1/2SW1/4, SE1/4SW1/4, and S1/2SE1/4;  
 Sec. 34, SW1/4SW1/4.

NV-18-09-096 T. 26 N., R. 56 E.,  
 Sec. 31, Lot 4, NE1/4SE1/4, SE1/4SW1/4, and S1/2SE1/4.

**Stipulation – Greater Sage Grouse (GRSG) Early Brood-rearing Habitat –  
General Habitat Management Area (GHMA)  
(#NV-L-16-D-TL)**

Stipulation: Timing Limitation (TL) - No surface occupancy would be allowed in GRSG early brood-rearing habitat from May 15 through June 15 in GHMA.

Objective [Purpose]: To protect GRSG early brood rearing habitat.

Exception: The Authorized Officer may grant an exception where an environmental review and consultation with the appropriate state agency (Nevada Department of Wildlife, Sagebrush Ecosystem Technical Team, California Department of Fish and Wildlife) determines that the action, as proposed or otherwise restricted, does not adversely affect GRSG or its habitat. An exception may also be granted if the proponent, the BLM, and the appropriate state agency negotiate mitigation that would provide a clear net conservation gain to GRSG and its habitat.

Modification: The Authorized Officer may modify the size and shape of the restricted area or the period of limitation where an environmental review and consultation with the appropriate state agency (Nevada Department of Wildlife, Sagebrush Ecosystem Technical Team, California Department of Fish and Wildlife) determines that the action, as proposed or otherwise restricted, does not adversely affect GRSG or its habitat.

Waiver: The Authorized Officer may waive the stipulation where an environmental review and consultation with the appropriate state agency (Nevada Department of Wildlife, Sagebrush Ecosystem Technical Team, California Department of Fish and Wildlife) determines that the described lands do not contain GRSG or suitable habitat or are otherwise incapable of serving the requirements of GRSG and therefore no longer warrant consideration as a component necessary for their protection.

<b>Parcel #</b>	<b>Legal Land Description</b>
	Mount Diablo Meridian, Nevada
NV-18-09-006	T. 16 N., R. 54 E., Sec. 1, W1/2NE1/4, SE1/4NE1/4, and W1/2,SE1/4; Sec. 2, Lots 1 thru 4, S1/2NE1/4, S1/2NW1/4, E1/2SW1/4, and SE1/4; Sec. 12.
NV-18-09-007	T. 16 N., R. 54 E., Sec. 11, NE1/4 and NE1/4SE1/4.
NV-18-09-009	T. 16 N., R. 54 E., Sec. 13, NE1/4, N1/2NW1/4, E1/2SW1/4, and SE1/4; Sec. 24, NE1/4, E1/2NW1/4, and N1/2SE1/4.
NV-18-09-013	T. 25 N., R. 54 E., Sec. 13, S1/2SE1/4; Sec. 24, E1/2; Sec. 25, E1/2; Sec. 36, N1/2NE1/4, SE1/4NE1/4, and E1/2SE1/4.
NV-18-09-014	T. 18 N., R. 55 E., Sec. 13, S1/2NW1/4, N1/2SW1/4, and SW1/4SW1/4; Sec. 14, E1/2SE1/4.
NV-18-09-015	T. 18 N., R. 55 E., Sec. 3, Lots 3 and 4, S1/2NW1/4, and SW1/4.
NV-18-09-016	T. 18 N., R. 55 E., Sec. 5, Lots 1 thru 4, S1/2NE1/4, S1/2NW1/4, and S1/2; Sec. 6, E1/2SE1/4; Sec. 7, Lot 4, S1/2NE1/4, NE1/4SW1/4, and SE1/4; Sec. 8, NE1/4 and S1/2.

NV-18-09-017 T. 18 N., R. 55 E.,  
 Sec. 17, N1/2, SW1/4, N1/2SE1/4, and SW1/4SE1/4;  
 Sec. 18, Lots 1 thru 4, E1/2, E1/2NW1/4, and E1/2SW1/4;  
 Sec. 19, Lots 1 thru 4, NE1/4, E1/2NW1/4, E1/2SW1/4, and W1/2SE1/4.

NV-18-09-018 T. 18 N., R. 55 E.,  
 Sec. 30, Lots 1 and 4, E1/2NE1/4, E1/2NW1/4, W1/2SW1/4, and SE1/4;  
 Sec. 31, Lots 2 thru 4, E1/2, E1/2NW1/4, and E1/2SW1/4.

NV-18-09-020 T. 20 N., R. 55 E.,  
 Sec. 26, NW1/4NW1/4.

NV-18-09-021 T. 22 N., R. 55 E.,  
 Sec. 2, Lot 4, SW1/4NE1/4, S1/2NW1/4, and W1/2SW1/4;  
 Sec. 3, Lot 1 and lots 5 thru 7, and SW1/4SE1/4;  
 Sec. 4, Lots 1 thru 4, S1/2NW1/4, and W1/2SW1/4.

NV-18-09-022 T. 22 N., R. 55 E.,  
 Sec. 8, E1/2, E1/2NW1/4, and E1/2SW1/4;  
 Sec. 9, NW1/4, N1/2SW1/4, SW1/4SW1/4, SE1/4NE1/4, and E1/2SE1/4;  
 Sec. 10, Lots 1 thru 6, W1/2NE1/4, E1/2NW1/4, E1/2SW1/4, and SE1/4;  
 Sec. 11, W1/2NW1/4.

NV-18-09-023 T. 22 N., R. 55 E.,  
 Sec. 15, Lots 1 thru 4, E1/2, W1/2NW1/4, and W1/2SW1/4;  
 Sec. 16, E1/2NE1/4, NE1/4SE1/4, and S1/2SE1/4;  
 Sec. 17, NW1/4NE1/4 and NE1/4NW1/4.

NV-18-09-024 T. 22 N., R. 55 E.,  
 Sec. 20, NE1/4SW1/4, S1/2SW1/4, and SE1/4;  
 Sec. 21, E1/2, S1/2NW1/4, and SW1/4;  
 Sec. 22, Lots 1 thru 4, E1/2, W1/2NW1/4, and W1/2SW1/4.

NV-18-09-025 T. 22 N., R. 55 E.,  
 Secs. 27 thru 29.

NV-18-09-026 T. 22 N., R. 55 E.,  
 Sec. 30, SE1/4SE1/4;  
 Sec. 31, E1/2;  
 Secs. 32 and 33;  
 Sec. 34, NE1/4, N1/2NW1/4, SW1/4NW1/4, SW1/4, and S1/2SE1/4.

NV-18-09-027 T. 23 N., R. 55 E.,  
 Sec. 2, Lots 1 thru 4 and lot 10, S1/2NE1/4, and SE1/4;  
 Sec. 3, W1/2SW1/4;  
 Sec. 4, NW1/4NE1/4, S1/2NE1/4, NE1/4NW1/4, S1/2NW1/4, and S1/2.

NV-18-09-028 T. 23 N., R. 55 E.,  
 Sec. 9, NE1/4, E1/2NW1/4, and NE1/4SE1/4;  
 Sec. 10, W1/2NW1/4.

NV-18-09-029 T. 23 N., R. 55 E.,  
 Sec. 11, Lots 1 thru 8, and E1/2;  
 Sec. 14, Lots 1 thru 6 and lot 8, and E1/2;  
 Sec. 15, E1/2NE1/4, S1/2SW1/4, and NE1/4SE1/4;  
 Sec. 16, S1/2SE1/4.

NV-18-09-030 T. 23 N., R. 55 E.,  
 Sec. 21, NE1/4, E1/2NW1/4, NE1/4SW1/4, and N1/2SE1/4;  
 Sec. 22, N1/2NW1/4 and SW1/4NW1/4.

NV-18-09-031 T. 23 N., R. 55 E.,  
 Sec. 23, Lots 1 and 2, and NE1/4.

NV-18-09-032 T. 23 N., R. 55 E.,  
 Sec. 27, W1/2SW1/4;  
 Sec. 28, S1/2NE1/4, S1/2NW1/4, and S1/2.

NV-18-09-033 T. 23 N., R. 55 E.,  
 Sec. 32, NE1/4SE1/4 and S1/2SE1/4;  
 Sec. 33;  
 Sec. 34, W1/2.

NV-18-09-034 T. 24 N., R. 55 E.,  
Sec. 3, Lot 2 and lots 6 thru 10, SW1/4NE1/4, and NW1/4SE1/4.

NV-18-09-035 T. 24 N., R. 55 E.,  
Sec. 4, Lot 5;  
Sec. 5, N1/2.

NV-18-09-036 T. 24 N., R. 55 E.,  
Sec. 8;  
Sec. 9, SW1/4SW1/4;  
Sec. 16, Lot 4, W1/2 NW1/4, W1/2SW1/4, SE1/4SW1/4, and SW1/4SE1/4.

NV-18-09-037 T. 24 N., R. 55 E.,  
Sec. 17, NE1/4, E1/2NW1/4, NE1/4SW1/4, and SE1/4;  
Sec. 20, NE1/4 and E1/2SE1/4;  
Sec. 21, Lots 1 thru 4, W1/2NE1/4, W1/2, and W1/2SE1/4.

NV-18-09-038 T. 24 N., R. 55 E.,  
Sec. 26, S1/2SW1/4;  
Sec. 27, SW1/4NE1/4, W1/2NW1/4, SE1/4NW1/4, and S1/2.

NV-18-09-039 T. 24 N., R. 55 E.,  
Sec. 28, Lots 1 thru 4, W1/2NE1/4, W1/2, and W1/2SE1/4;  
Sec. 29, E1/2;  
Sec. 32, NE1/4 and N1/2SE1/4.

NV-18-09-040 T. 24 N., R. 55 E.,  
Sec. 33, Lots 1 thru 3, W1/2NE1/4, NW1/4, N1/2SW1/4, and SW1/4SW1/4;  
Sec. 34, Lots 1 thru 8; and N1/2.

NV-18-09-041 T. 24 N., R. 55 E.,  
Sec. 35, Lots 1 thru 8; and N1/2;  
Sec. 36, Lots 2 thru 7, W1/2NE1/4, and NW1/4.

NV-18-09-042 T. 25 N., R. 55 E.,  
Sec. 1, Lots 1 thru 4, S1/2NE1/4, S1/2NW1/4, and S1/2;  
Sec. 2, Lots 1 thru 4, S1/2NE1/4, SE1/4NW1/4, NE1/4SW1/4, and SE1/4;  
Sec. 11, E1/2, W1/2NW1/4, and SW1/4SW1/4;  
Sec. 12.

NV-18-09-043 T. 25 N., R. 55 E.,  
Sec. 3, Lots 3 and 4, SW1/4NE1/4, S1/2NW1/2, SW1/4, W1/2SE1/4, and SE1/4SE1/4;  
Sec. 4, Lots 1 thru 4, S1/2NE1/4, S1/2NW1/4, and S1/2;  
Sec. 9, Lots 1 thru 14, SW1/4, and W1/2SE1/4;  
Sec. 10.

NV-18-09-044 T. 25 N., R. 55 E.,  
Sec. 5, Lot 1 and 2, S1/2NE1/4;  
Sec. 5, E1/2NW1/4, E1/2SW1/4, and SE1/4;  
Sec. 8, E1/2.

NV-18-09-045 T. 25 N., R. 55 E.,  
Sec. 13;  
Sec. 14, NE1/4, W1/2NW1/4, W1/2SW1/4, N1/2SE1/4, and SE1/4SE1/4;  
Sec. 23, Lots 1 thru 8, and E1/2NE1/4;  
Sec. 24, Lots 1 thru 8, and N1/2.

NV-18-09-046 T. 25 N., R. 55 E.,  
Sec. 15;  
Sec. 16, Lots 1 thru 4, W1/2NE1/4, W1/2, and W1/2SE1/4;  
Sec. 17, E1/2.

NV-18-09-047 T. 25 N., R. 55 E.,  
Sec. 20, E1/2;  
Sec. 21, Lots 1 thru 4, W1/2NE1/4, W1/2, and W1/2SE1/4;  
Sec. 22, Lots 1 thru 8, and W1/2.

NV-18-09-048 T. 25 N., R. 55 E.,  
Sec. 25;  
Sec. 26, E1/2NE1/4, W1/2NW1/4, and SE1/4;  
Sec. 35, NE1/4, NE1/4NW1/4, S1/2NW1/4, and NW1/4SW1/4;  
Sec. 36, NW1/4.

NV-18-09-049 T. 25 N., R. 55 E.,  
 Sec. 27, Lots 1 thru 4, W1/2, and SE1/4;  
 Sec. 28, Lots 1 thru 4, W1/2NE1/4, W1/2, and W1/2SE1/4;  
 Sec. 33, Lots 1 and 2, NW1/4NE1/4, N1/2NW1/4, and SW1/4SW1/4;  
 Sec. 34, Lots 1 thru 5 and lot 8, and NW1/4NE1/4.

NV-18-09-050 T. 25 N., R. 55 E.,  
 Sec. 30, SW1/4NE1/4, W1/2, and SE1/4;  
 Sec. 31;  
 Sec. 32, SW1/4NE1/4, W1/2, and SE1/4.

NV-18-09-051 T. 26 N., R. 55 E.,  
 Sec. 19, N1/2NE1/4 and SE1/4NE1/4;  
 Sec. 20, N1/2, N1/2SW1/4, SE1/4SW1/4, and SE1/4;  
 Sec. 21, SW1/4SW1/4.

NV-18-09-052 T. 26 N., R. 55 E.,  
 Sec. 28, Lot 4, W1/2, and W1/2SE1/4;  
 Sec. 29, E1/2 and SW1/4;  
 Sec. 30, Lots 1 thru 4, S1/2NE1/4, E1/2NW1/4, E1/2SW1/4, and SE1/4.

NV-18-09-053 T. 26 N., R. 55 E.,  
 Sec. 31, N1/2NE1/4 and SE1/4NE1/4;  
 Sec. 32, Lots 1 thru 4, N1/2, N1/2SW1/4, and N1/2SE1/4;  
 Sec. 33, Lots 1-7, W1/2NE1/4, NW1/4, N1/2SW1/4, and NW1/4SE1/4.

NV-18-09-066 T. 20 N., R. 57 E.,  
 Sec. 1, SE1/4SE1/4;  
 Sec. 10, E1/2SW1/4 and SE1/4.

NV-18-09-069 T. 20 N., R. 56 E.,  
 Sec. 11, S1/2;  
 Sec. 13, SE1/4NE1/4, W1/2, and NE1/4SE1/4;  
 Sec. 14, N1/2, N1/2SW1/4, SE1/4SW1/4, and SE1/4.

NV-18-09-071 T. 20 N., R. 56 E.,  
 Sec. 23, NE1/4NE1/4;  
 Sec. 24, NW1/4NW1/4.

NV-18-09-074 T. 21 N., R. 56 E.,  
 Sec. 1, Lots 3 and 4, S1/2NW1/4, and SW1/4;  
 Sec. 2, Lot 1, S1/2NE1/4, and SE1/4.

NV-18-09-075 T. 21 N., R. 56 E.,  
 Sec. 3, Lot 4, SW1/4NW1/4, and W1/2SW1/4;  
 Sec. 4, Lots 1 thru 4, S1/2NE1/4, S1/2NW1/4, and S1/2.

NV-18-09-077 T. 21 N., R. 56 E.,  
 Sec. 9, E1/2, N1/2NW1/4, NE1/4SW1/4, and S1/2SW1/4.

NV-18-09-078 T. 21 N., R. 56 E.,  
 Sec. 10, W1/2NW1/4 and W1/2SW1/4;  
 Sec. 11, N1/2NE1/4 and SE1/4NE1/4;  
 Sec. 12, NW1/4.

NV-18-09-079 T. 21 N., R. 56 E.,  
 Sec. 17, E1/2NE1/4 and E1/2SE1/4;  
 Sec. 20, E1/2NE1/4 and NE1/4SE1/4.

NV-18-09-080 T. 24 N., R. 56 E.,  
 Sec. 2, SW1/4NW1/4 and SW1/4;  
 Sec. 3, Lots 3 and 4, S1/2NE1/4, S1/2NW1/4, and S1/2.

NV-18-09-081 T. 24 N., R. 56 E.,  
 Sec. 4, Lots 1 thru 4, S1/2NE1/4, S1/2NW1/4, and S1/2;  
 Sec. 5, Lots 1 thru 4, S1/2NE1/4, S1/2NW1/4, NE1/4SW1/4, and SE1/4;  
 Sec. 6, Lot 1.

NV-18-09-082 T. 24 N., R. 56 E.,  
 Sec. 8, NE1/4NE1/4;  
 Sec. 9, E1/2, N1/2NW1/4, and S1/2SW1/4.

NV-18-09-083 T. 24 N., R. 56 E.,  
Sec. 10;  
Sec. 11, NW1/4NW1/4, W1/2SW1/4, and SE1/4SW1/4.

NV-18-09-084 T. 24 N., R. 56 E.,  
Sec. 13, NE1/4 and S1/2;  
Sec. 14, W1/2NE1/4, SE1/4NE1/4, W1/2, and SE1/4;  
Sec. 15.

NV-18-09-085 T. 24 N., R. 56 E.,  
Sec. 16.

NV-18-09-087 T. 24 N., R. 56 E.,  
Sec. 22, N1/2, E1/2SW1/4, and SE1/4;  
Secs. 23 and 24.

NV-18-09-088 T. 24 N., R. 56 E.,  
Sec. 25, NE1/4, N1/2NW1/4, SE1/4NW1/4, S1/2SW1/4, and S1/2SE1/4;  
Sec. 26, N1/2NW1/4;  
Sec. 27, N1/2NE1/4, SW1/4NE1/4, and NW1/4.

NV-18-09-089 T. 24 N., R. 56 E.,  
Sec. 28, SE1/4NE1/4.

NV-18-09-090 T. 24 N., R. 56 E.,  
Sec. 31, E1/2SE1/4;  
Sec. 32, S1/2NE1/4, S1/2NW1/4, and S1/2;  
Sec. 33, SW1/4NW1/4, W1/2SW1/4, SE1/4SW1/4, and SE1/4.

NV-18-09-091 T. 24 N., R. 56 E.,  
Sec. 34, SW1/4SW1/4;  
Sec. 35, E1/2NE1/4 and SE1/4;  
Sec. 36, N1/2.

NV-18-09-092 T. 25 N., R. 56 E.,  
Sec. 6, Lots 1 thru 7, S1/2NE1/4, SE1/4NW1/4, E1/2SW1/4, N1/2SE1/4, and  
SW1/4SE1/4;  
Sec. 7, Lots 1 thru 4, E1/2, E1/2NW1/4, and E1/2SW1/4;  
Sec. 8, W1/2 and SW1/4SE1/4.

NV-18-09-093 T. 25 N., R. 56 E.,  
Sec. 17, W1/2NE1/4, W1/2, and W1/2SE1/4;  
Sec. 18, Lots 1 thru 4, E1/2, E1/2NW1/4, and E1/2SW1/4.

NV-18-09-094 T. 25 N., R. 56 E.,  
Sec. 28, NW1/4, N1/2SW1/4, and SW1/4SW1/4.

NV-18-09-095 T. 25 N., R. 56 E.,  
Sec. 31, Lots 1 thru 3, E1/2, E1/2NW1/4, NE1/4SW1/4;  
Sec. 32;  
Sec. 33, W1/2NW1/4.

NV-18-09-096 T. 26 N., R. 56 E.,  
Sec. 31, Lot 4, SE1/4SW1/4, NE1/4SE1/4, and S1/2SE1/4.

**Stipulation – Greater Sage Grouse (GRSG) Late Brood-rearing Habitat –  
General Habitat Management Area (GHMA)  
(#NV-L-16-E-TL)**

Stipulation: Timing Limitation (TL) -No surface occupancy would be allowed in GRSG late brood-rearing habitat from June 15 through September 15 in GHMA.

Objective [Purpose]: To protect GRSG late brood rearing habitat.

Exception: The Authorized Officer may grant an exception where an environmental review and consultation with the appropriate state agency (Nevada Department of Wildlife, Sagebrush Ecosystem Technical Team, California Department of Fish and Wildlife) determines that the action, as proposed or otherwise restricted, does not adversely affect GRSG or its habitat. An exception may also be granted if the proponent, the BLM, and the appropriate state agency negotiate mitigation that would provide a clear net conservation gain to GRSG and its habitat.

Modification: The Authorized Officer may modify the size and shape of the restricted area or the period of limitation where an environmental review and consultation with the appropriate state agency (Nevada Department of Wildlife, Sagebrush Ecosystem Technical Team, California Department of Fish and Wildlife) determines that the action, as proposed or otherwise restricted, does not adversely affect GRSG or its habitat.

Waiver: The Authorized Officer may waive the stipulation where an environmental review and consultation with the appropriate state agency (Nevada Department of Wildlife, Sagebrush Ecosystem Technical Team, California Department of Fish and Wildlife) determines that the described lands do not contain GRSG or suitable habitat or are otherwise incapable of serving the requirements of GRSG and therefore no longer warrant consideration as a component necessary for their protection.

Parcel #	Legal Land Description
NV-18-09-006	Mount Diablo Meridian, Nevada T. 16 N., R. 54 E., Sec. 1, W1/2NE1/4, SE1/4NE1/4, and W1/2,SE1/4; Sec. 2, Lots 1 thru 4, S1/2NE1/4, S1/2NW1/4, E1/2SW1/4, and SE1/4; Sec. 12.
NV-18-09-007	T. 16 N., R. 54 E., Sec. 11, NE1/4 and NE1/4SE1/4.
NV-18-09-009	T. 16 N., R. 54 E., Sec. 13; Sec. 23, NE1/4SE1/4; Sec. 24.
NV-18-09-011	T. 16 N., R. 54 E., Sec. 25, NW1/4NE1/4 and N1/2NW1/4; Sec. 36, S1/2SE1/4.
NV-18-09-013	T. 25 N., R. 54 E., Sec. 13, S1/2SE1/4; Sec. 24, E1/2; Sec. 25, E1/2; Sec. 36, N1/2NE1/4, SE1/4NE1/4, and E1/2SE1/4.
NV-18-09-014	T. 18 N., R. 55 E., Sec. 13, S1/2NW1/4, N1/2SW1/4, and SW1/4SW1/4; Sec. 14, S1/2NE1/4 and SE1/4.
NV-18-09-015	T. 18 N., R. 55 E., Sec. 3, Lots 3 and 4, S1/2NW1/4, and SW1/4.



NV-18-09-016 T. 18 N., R. 55 E.,  
 Sec. 5, Lots 1 thru 4, S1/2NE1/4, S1/2NW1/4, and S1/2;  
 Sec. 6, E1/2SE1/4;  
 Sec. 7, Lot 4, S1/2NE1/4, NE1/4SW1/4, and SE1/4;  
 Sec. 8, NE1/4 and S1/2.

NV-18-09-017 T. 18 N., R. 55 E.,  
 Sec. 17, N1/2, SW1/4, N1/2SE1/4, and SW1/4SE1/4;  
 Sec. 18, Lots 1 thru 4, E1/2, E1/2NW1/4, and E1/2SW1/4;  
 Sec. 19, Lots 1 thru 4, NE1/4, E1/2NW1/4, E1/2SW1/4, and W1/2SE1/4.

NV-18-09-018 T. 18 N., R. 55 E.,  
 Sec. 30, Lots 1 and 4, E1/2NE1/4, E1/2NW1/4, W1/2SW1/4, and SE1/4;  
 Sec. 31, Lots 2 thru 4, E1/2, E1/2NW1/4, and E1/2SW1/4.

NV-18-09-020 T. 20 N., R. 55 E.,  
 Sec. 26, NW1/4NW1/4.

NV-18-09-021 T. 22 N., R. 55 E.,  
 Sec. 2, Lot 4, SW1/4NE1/4, S1/2NW1/4, and W1/2SW1/4;  
 Sec. 3, Lot 1 and lots 5 thru 7, and SW1/4SE1/4;  
 Sec. 4, Lots 1 thru 4, S1/2NW1/4, and W1/2SW1/4.

NV-18-09-022 T. 22 N., R. 55 E.,  
 Sec. 8, E1/2, E1/2NW1/4, and E1/2SW1/4;  
 Sec. 9, NW1/4, N1/2SW1/4, SW1/4SW1/4, SE1/4NE1/4, and E1/2SE1/4;  
 Sec. 10, Lots 1 thru 6, W1/2NE1/4, E1/2NW1/4, E1/2SW1/4, S and E1/4;  
 Sec. 11, W1/2NW1/4.

NV-18-09-023 T. 22 N., R. 55 E.,  
 Sec. 15, Lots 1 thru 4, E1/2, W1/2NW1/4, and W1/2SW1/4;  
 Sec. 16, E1/2NE1/4, NE1/4SE1/4, and S1/2SE1/4;  
 Sec. 17, NW1/4NE1/4 and NE1/4NW1/4.

NV-18-09-024 T. 22 N., R. 55 E.,  
 Sec. 20, NE1/4SW1/4, S1/2SW1/4, and SE1/4;  
 Sec. 21, E1/2, S1/2NW1/4, and SW1/4;  
 Sec. 22, Lots 1 thru 4, E1/2, W1/2NW1/4, and W1/2SW1/4.

NV-18-09-025 T. 22 N., R. 55 E.,  
 Secs. 27 thru 29.

NV-18-09-026 T. 22 N., R. 55 E.,  
 Sec. 30, SE1/4SE1/4;  
 Sec. 31, E1/2;  
 Secs. 32 and 33;  
 Sec. 34, NE1/4, N1/2NW1/4, SW1/4NW1/4, SW1/4, and S1/2SE1/4.

NV-18-09-027 T. 23 N., R. 55 E.,  
 Sec. 2, Lots 1 thru 4 and lot 10, S1/2NE1/4, and SE1/4;  
 Sec. 3, W1/2SW1/4;  
 Sec. 4, NW1/4NE1/4, S1/2NE1/4, NE1/4NW1/4, S1/2NW1/4, and S1/2.

NV-18-09-028 T. 23 N., R. 55 E.,  
 Sec. 9, NE1/4, E1/2NW1/4, and NE1/4SE1/4;  
 Sec. 10, W1/2NW1/4.

NV-18-09-029 T. 23 N., R. 55 E.,  
 Sec. 11, Lots 1 thru 8, and E1/2;  
 Sec. 14, Lots 1 thru 6 and lot 8, and E1/2;  
 Sec. 15, E1/2NE1/4, S1/2SW1/4, and NE1/4SE1/4;  
 Sec. 16, S1/2SE1/4.

NV-18-09-030 T. 23 N., R. 55 E.,  
 Sec. 21, NE1/4, E1/2NW1/4, NE1/4SW1/4, and N1/2SE1/4;  
 Sec. 22, N1/2NW1/4 and SW1/4NW1/4.

NV-18-09-031 T. 23 N., R. 55 E.,  
 Sec. 23, Lots 1 and 2, and NE1/4.

NV-18-09-032 T. 23 N., R. 55 E.,  
 Sec. 27, W1/2SW1/4;  
 Sec. 28, S1/2NE1/4, S1/2NW1/4, and S1/2.

NV-18-09-033 T. 23 N., R. 55 E.,  
 Sec. 32, NE1/4SE1/4 and S1/2SE1/4;  
 Sec. 33;  
 Sec. 34, W1/2.

NV-18-09-034 T. 24 N., R. 55 E.,  
 Sec. 3, Lot 2 and lots 7 thru 10, SW1/4NE1/4, and NW1/4SE1/4.

NV-18-09-035 T. 24 N., R. 55 E.,  
 Sec. 4, Lots 5, 12, 19 and 20;  
 Sec. 5, N1/2.

NV-18-09-036 T. 24 N., R. 55 E.,  
 Sec. 8;  
 Sec. 9, SW1/4SW1/4;  
 Sec. 16, Lot 4, W1/2NW1/4, W1/2SW1/4, SE1/4SW1/4, and SW1/4SE1/4.

NV-18-09-037 T. 24 N., R. 55 E.,  
 Sec. 17, NE1/4, E1/2NW1/4, NE1/4SW1/4, and SE1/4;  
 Sec. 20, NE1/4 and E1/2SE1/4;  
 Sec. 21, Lots 1 thru 4, W1/2NE1/4, W1/2, and W1/2SE1/4.

NV-18-09-038 T. 24 N., R. 55 E.,  
 Sec. 27, SW1/4NE1/4, W1/2NW1/4, SE1/4NW1/4, and S1/2.

NV-18-09-039 T. 24 N., R. 55 E.,  
 Sec. 28, Lots 1 thru 4, W1/2NE1/4, W1/2, and W1/2SE1/4;  
 Sec. 29, E1/2;  
 Sec. 32, NE1/4 and N1/2SE1/4.

NV-18-09-040 T. 24 N., R. 55 E.,  
 Sec. 33, Lots 1 thru 3, W1/2NE1/4, NW1/4, N1/2SW1/4, and SW1/4SW1/4;  
 Sec. 34, Lots 1 thru 8, and N1/2.

NV-18-09-041 T. 24 N., R. 55 E.,  
 Sec. 35, Lots 4 thru 8, and W1/2NW1/4;  
 Sec. 36, Lots 2 thru 7.

NV-18-09-042 T. 25 N., R. 55 E.,  
 Sec. 1, Lots 1 thru 4, S1/2NE1/4, S1/2NW1/4, and S1/2;  
 Sec. 2, Lots 1 and 2, S1/2NE1/4, SE1/4NW1/4, NE1/4SW1/4, and SE1/4;  
 Sec. 11, E1/2, W1/2NW1/4, and SW1/4SW1/4;  
 Sec. 12.

NV-18-09-043 T. 25 N., R. 55 E.,  
 Sec. 3, SE1/4SE1/4;  
 Sec. 4, Lot 4, SW1/4NW1/4, W1/2SW1/4, and SE1/4SW1/4;  
 Sec. 9, Lots 3 thru 6 and lots 9 thru 14, SW1/4, and W1/2SE1/4;  
 Sec. 10, NE1/4NE1/4, W1/2SW1/4, SE1/4SW1/4, NE1/4SE1/4, and S1/2SE1/4.

NV-18-09-044 T. 25 N., R. 55 E.,  
 Sec. 5, Lot 1 and 2, and S1/2NE1/4;  
 Sec. 5, E1/2NW1/4, NW1/4NW1/4, E1/2SW1/4, and SE1/4;  
 Sec. 8, E1/2.

NV-18-09-045 T. 25 N., R. 55 E.,  
 Sec. 13;  
 Sec. 14, NE1/4, W1/2NW1/4, W1/2SW1/4, N1/2SE1/4, S and E1/4SE1/4;  
 Sec. 23, Lots 1 thru 8, and E1/2NE1/4;  
 Sec. 24, Lots 1 thru 8, and N1/2.

NV-18-09-046 T. 25 N., R. 55 E.,  
 Sec. 15;  
 Sec. 16, Lots 1 thru 4, W1/2NE1/4, W1/2, and W1/2SE1/4;  
 Sec. 17, E1/2.

NV-18-09-047 T. 25 N., R. 55 E.,  
 Sec. 20, E1/2;  
 Sec. 21, Lots 1 thru 4, W1/2NE1/4, W1/2, and W1/2SE1/4;  
 Sec. 22, Lots 1 thru 8, and W1/2.

NV-18-09-048 T. 25 N., R. 55 E.,  
 Sec. 25;  
 Sec. 26, E1/2NE1/4, W1/2NW1/4, and SE1/4;  
 Sec. 35, NE1/4, N E1/4NW1/4, S1/2NW1/4, and NW1/4SW1/4;  
 Sec. 36, NW1/4.

NV-18-09-049 T. 25 N., R. 55 E.,  
 Sec. 27, Lots 1 thru 4, W1/2, and SE1/4;  
 Sec. 28, Lots 1 thru 4, W1/2NE1/4, W1/2, and W1/2SE1/4;  
 Sec. 33, Lots 1 and 2, NW1/4NE1/4, N1/2NW1/4, and SW1/4SW1/4;  
 Sec. 34, Lots 1 thru 5, NW1/4NE1/4.

NV-18-09-050 T. 25 N., R. 55 E.,  
 Sec. 30, SW1/4NE1/4, W1/2, and SE1/4;  
 Sec. 31;  
 Sec. 32, SW1/4NE1/4, W1/2, and SE1/4.

NV-18-09-051 T. 26 N., R. 55 E.,  
 Sec. 19, N1/2NE1/4 and SE1/4NE1/4;  
 Sec. 20, NW1/4 and N1/2SW1/4.

NV-18-09-052 T. 26 N., R. 55 E.,  
 Sec. 29, SW1/4 and NW1/4SE1/4;  
 Sec. 30, Lots 1 thru 4, S1/2NE1/4, E1/2NW1/4, E1/2SW1/4, and SE1/4.

NV-18-09-053 T. 26 N., R. 55 E.,  
 Sec. 31, Lots 1 and 7, NE1/4, NE1/4NW1/4, and NE1/4SE1/4;  
 Sec. 32, Lots 1 thru 4, NW1/4, N1/2SW1/4, and N1/2SE1/4.

NV-18-09-066 T. 20 N., R. 57 E.,  
 Sec. 1, SE1/4SE1/4;  
 Sec. 10, E1/2SW1/4 and SE1/4.

NV-18-09-069 T. 20 N., R. 56 E.,  
 Sec. 11, S1/2;  
 Sec. 13, SE1/4NE1/4, W1/2, and NE1/4SE1/4;  
 Sec. 14, N1/2, N1/2SW1/4, SE1/4SW1/4, and SE1/4.

NV-18-09-071 T. 20 N., R. 56 E.,  
 Sec. 23, NE1/4NE1/4;  
 Sec. 24, NW1/4NW1/4.

NV-18-09-074 T. 21 N., R. 56 E.,  
 Sec. 1, Lots 3 and 4, S1/2NW1/4, and SW1/4;  
 Sec. 2, Lot 1, S1/2NE1/4, and SE1/4.

NV-18-09-075 T. 21 N., R. 56 E.,  
 Sec. 3, Lot 4, SW1/4NW1/4, and W1/2SW1/4;  
 Sec. 4, Lots 1 thru 4, S1/2NE1/4, S1/2NW1/4, and S1/2.

NV-18-09-077 T. 21 N., R. 56 E.,  
 Sec. 9, E1/2, N1/2NW1/4, NE1/4SW1/4, and S1/2SW1/4.

NV-18-09-078 T. 21 N., R. 56 E.,  
 Sec. 10, W1/2NW1/4 and W1/2SW1/4;  
 Sec. 11, N1/2NE1/4 and SE1/4NE1/4;  
 Sec. 12, NW1/4.

NV-18-09-079 T. 21 N., R. 56 E.,  
 Sec. 17, E1/2NE1/4 and E1/2SE1/4;  
 Sec. 20, E1/2NE1/4 and NE1/4SE1/4.

NV-18-09-083 T. 24 N., R. 56 E.,  
 Sec. 10, S1/2SE1/4;  
 Sec. 11, S1/2SW1/4.

NV-18-09-084 T. 24 N., R. 56 E.,  
 Sec. 14, W1/2NE1/4, W1/2, N1/2SE1/4, and SW1/4SE1/4.  
 Sec. 15, NE1/4 and NE1/4SE1/4.

NV-18-09-087 T. 24 N., R. 56 E.,  
 Sec. 22, SE1/4NE1/4;  
 Sec. 23, SE1/4NE1/4, S1/2NW1/4, and S1/2;  
 Sec. 24, E1/2, S1/2NW1/4, and SW1/4.

NV-18-09-088 T. 24 N., R. 56 E.,  
 Sec. 25, NE1/4, N1/2NW1/4, SE1/4NW1/4, S1/2SW1/4, and S1/2SE1/4;  
 Sec. 26, N1/2NW1/4;  
 Sec. 27, N1/2NE1/4, SW1/4NE1/4, NE1/4NW1/4, and S1/2NW1/4.

NV-18-09-090 T. 24 N., R. 56 E.,  
 Sec. 31, SE1/4SE1/4;  
 Sec. 32, S1/2SW1/4, NE1/4SE1/4, and S1/2SE1/4;  
 Sec. 33, W1/2SW1/4, SE1/4SW1/4, and SE1/4.

NV-18-09-091 T. 24 N., R. 56 E.,  
 Sec. 34, SW1/4SW1/4;  
 Sec. 35, E1/2NE1/4;  
 Sec. 36, NE1/4, N1/2NW1/4.

NV-18-09-092 T. 25 N., R. 56 E.,  
 Sec. 6, Lots 1 thru 7, S1/2NE1/4, SE1/4NW1/4, E1/2SW1/4, N1/2SE1/4, and  
 SW1/4SE1/4;  
 Sec. 7, Lots 1 thru 4, E1/2, E1/2NW1/4, and E1/2SW1/4;  
 Sec. 8, W1/2 and SW1/4SE1/4.

NV-18-09-093 T. 25 N., R. 56 E.,  
 Sec. 17, W1/2NE1/4 and NW1/4;  
 Sec. 18, Lots 1 thru 4, NE1/4, E1/2NW1/4, E1/2SW1/4, and NW1/4SE1/4.

NV-18-09-095 T. 25 N., R. 56 E.,  
 Sec. 31, Lot 1.

NV-18-09-096 T. 26 N., R. 56 E.,  
 Sec. 31, Lot 4, SE1/4SW1/4, NE1/4SE1/4, and S1/2SE1/4.

**Stipulation – Greater Sage Grouse (GRSG) in  
Priority Habitat Management Area (PHMA)  
(#NV-L-16-A-NSO)**

Stipulation: No Surface Occupancy (NSO) – Priority Habitat Management Areas (PHMA) outside of Sagebrush Focal Areas (SFA) – Manage oil and gas resources in Nevada as NSO, with two exceptions.

Objective [Purpose]: To protect GRSG in PHMA.

Exception: The Authorized Officer may grant an exception to an oil and gas lease NSO stipulation only where the proposed action is as one of the following:

- (i) Would not have direct, indirect, or cumulative effects on GRSG or its habitat
- (ii) Is proposed to be undertaken as an alternative to a similar action occurring on a nearby parcel and would provide a clear net conservation gain to GRSG and its habitat.

Exceptions based on conservation gain (ii) may only be considered in (a) PHMA of mixed ownership where federal minerals underlie less than fifty percent of the total surface or (b) areas of the public lands where the proposed exception is an alternative to an action occurring on a nearby parcel subject to a valid federal oil and gas lease existing as of the date of this ARMPA. Exceptions based on conservation gain must also include such measures as enforceable institutional controls and buffers, sufficient to allow the BLM to conclude that such benefits would endure for the duration of the proposed action’s impacts.

Any exceptions to this lease stipulation may be approved by the Authorized Officer only with the concurrence of the State Director. The Authorized Officer may not grant an exception unless the applicable state wildlife agency, the USFWS, and the BLM unanimously find that the proposed action satisfies (i) or (ii). Such finding initially would be made by a team of one field biologist or other GRSG expert from each respective agency. In the event the initial finding were not unanimous, the finding may be elevated to the appropriate BLM State Director, USFWS State Ecological Services Director, and state wildlife agency head for final resolution. In the event their finding were not unanimous, the exception would not be granted. Approved exceptions would be made publicly available at least quarterly.

Modification: None

Waiver: None

<b>Parcel #</b>	<b>Legal Land Description</b>
NV-18-09-004	Mount Diablo Meridian, Nevada T. 15 N., R. 53 E., Sec. 31, Lots 2 thru 4, and SE1/4SW1/4.
NV-18-09-006	T. 16 N., R. 54 E., Sec. 1, NE1/4.
NV-18-09-014	T. 18 N., R. 535 E., Sec. 13, SW1/4; Sec. 13, SE1/4.
NV-18-09-016	T. 18 N., R. 55 E., Sec. 5, Lot 4, SW1/4NW1/4; Sec. 6, Lots 1 thru 3 and lots 6 and 7, S 1/2NE1/4, S E1/4SW1/4, and E1/2SE1/4; Sec. 7, Lots 1 thru 4, SW1/4NE1/4, E1/2NW1/4, NE1/4SW1/4, and NW1/4SE1/4.
NV-18-09-017	T. 18 N., R. 55 E., Sec. 18, Lot 1; Sec. 19, SE1/4SE1/4.
NV-18-09-018	T. 18 N., R. 55 E., Sec. 30, Lot 4, NE1/4NE1/4, S1/2NE1/4, E1/2SW1/4, N1/2SE1/4, and SW1/4SE1/4; Sec. 31, Lots 1 thru 3, and W1/2NW1/4.

NV-18-09-034 T. 24 N., R. 55 E.,  
 Sec. 1, Lots 1 thru 4, S1/2NE1/4, S1/2NW1/4, and S1/2;  
 Sec. 2, Lots 1 thru 4, S1/2NE1/4, S1/2NW1/4, and S1/2;  
 Sec. 3, Lots 1 and 2, 7, 9 and 10, S1/2NE1/4, and SE1/4.

NV-18-09-035 T. 24 N., R. 55 E.,  
 Sec. 4, Lot 12 and lots 18 thru 22, and W1/2SE1/4.

NV-18-09-036 T. 24 N., R. 55 E.,  
 Sec. 9, Lots 1 thru 4, W1/2NE1/4, E1/2NW1/4, E1/2SW1/4, and W1/2SE1/4;  
 Sec. 16, Lots 1 thru 4, W1/2NE1/4, NE1/4NW1/4, and W1/2SE1/4.

NV-18-09-037 T. 24 N., R. 55 E.,  
 Sec. 21, Lots 1 and 2.

NV-18-09-038 T. 24 N., R. 55 E.,  
 Secs. 25 and 26  
 Sec. 27, NE1/4, N1/2NW1/4, SE1/4NW1/4, N1/2SE1/4, and SE1/4SE1/4.

NV-18-09-041 T. 24 N., R. 55 E.,  
 Sec. 35, N1/2NE1/4 and NE1/4NW1/4;  
 Sec. 36, N1/2NE1/4 and N1/2NW1/4.

NV-18-09-048 T. 25 N., R. 55 E.,  
 Sec. 35, S1/2NE1/4, S1/2NW1/4, and S1/2;  
 Sec. 36, S1/2NW1/4 and SW1/4.

NV-18-09-049 T. 25 N., R. 55 E.,  
 Sec. 34, SE1/4SE1/4.

NV-18-09-051 T. 26 N., R. 55 E.,  
 Sec. 20, N1/2NE1/4, SE1/4NE1/4, and E1/2SE1/4;  
 Sec. 21, Lots 1 thru 4, W1/2NE1/4, W1/2, and W1/2SE1/4.

NV-18-09-052 T. 26 N., R. 55 E.,  
 Sec. 28, Lots 1 thru 4, W1/2NE1/4, N1/2NW1/4, SE1/4NW1/4, NE1/4SW1/4, and  
 W1/2SE1/4.

NV-18-09-053 T. 26 N., R. 55 E.,  
 Sec. 33, Lot 1.

NV-18-09-069 T. 20 N., R. 66 E.,  
 Sec. 13, E1/2NE1/4 and NE1/4SE1/4.

NV-18-09-081 T. 24 N., R. 56 E.,  
 Sec. 5, Lot 4; S1/2NW1/4, SW1/4, W1/2SE1/4, and SE1/4SE1/4;  
 Sec. 6, Lots 1 thru 7, S1/2NE1/4, SE1/4NW1/4, E1/2SW1/4, and SE1/4.

NV-18-09-082 T. 24 N., R. 56 E.,  
 Sec. 7, Lots 1 thru 4, E1/2, E1/2NW1/4, and E1/2SW1/4.  
 Sec. 8;  
 Sec. 9, W1/2SW1/4.

NV-18-09-085 T. 24 N., R. 56 E.,  
 Sec. 17;  
 Sec. 18, Lots 1 thru 4, E1/2, E1/2NW1/4, and E1/2SW1/4.

NV-18-09-086 T. 24 N., R. 56 E.,  
 Sec. 19, Lots 1 thru 4, E1/2, E1/2NW1/4, and E1/2SW1/4;  
 Sec. 20;  
 Sec. 21, NW1/4NW1/4.

NV-18-09-088 T. 24 N., R. 56 E.,  
 Sec. 25, S1/2NW1/4 and S1/2;  
 Sec. 26, S1/2NE1/4 and W1/2,SE1/4;  
 Sec. 27, E1/2, S1/2NW1/4, and SW1/4.

NV-18-09-089 T. 24 N., R. 56 E.,  
 Sec. 28, S1/2NE1/4 and S1/2;  
 Sec. 29, NW1/4NE1/4, NW1/4, NW1/4SW1/4, and S1/2SE1/4;  
 Sec. 30, Lots 1 thru 4, E1/2, E1/2NW1/4, and E1/2SW1/4.

NV-18-09-090 T. 24 N., R. 56 E.,  
 Sec. 31, Lot 1, and NE1/4NW1/4;  
 Sec. 32, NE1/4 and E1/2NW1/4;  
 Sec. 33.

NV-18-09-091 T. 24 N., R. 56 E.,  
Sec. 34;  
Sec. 35, N1/2, SW1/4, N1/2SE1/4, and SW1/4SE1/4;  
Sec. 36, NW1/4NW1/4.

NV-18-09-095 T. 25 N., R. 56 E.,  
Sec. 31, Lots 2 thru 4, E1/2SW1/4, W1/2SE1/4, and SE1/4SE1/4.

NV-18-09-096 T. 26 N., R. 56 E.,  
Sec. 19, Lots 1 thru 4, E1/2, E1/2NW1/4, and E1/2SW1/4;  
Sec. 30, Lots 1 thru 4, E1/2, E1/2NW1/4, and E1/2SW1/4;  
Sec. 31, Lots 1 thru 4, E1/2, E1/2NW1/4, and E1/2SW1/4.

**Stipulation – Greater Sage Grouse (GRSG)  
Lek Sites, Noise  
(#NV-L-16-F-CSU)**

Stipulation - Controlled Surface Use (CSU): Authorizations/permits would limit noise from discretionary activities (during construction, operation, or maintenance) to not exceed 10 decibels above ambient sound levels at 0.25 miles from active and pending leks from 2 hours before to 2 hours after sunrise and sunset during the breeding season from March 1 through May 15.

Objective [Purpose]: To protect GRSG lek sites.

Exception: None

Modification: None

Waiver: None

<b>Parcel #</b>	<b>Legal Land Description</b>
NV-18-09-026	Mount Diablo Meridian, Nevada T. 22 N., R. 55 E., Sec. 33, SW1/4NE1/4.



**Stipulation – Greater Sage Grouse (GRSG)  
Lek Sites, Buffer Distances  
(#NV-L-16-G-CSU)**

Stipulation – Controlled Surface Use (CSU): The BLM will apply lek buffer distances specified as the lower end of the interpreted range in the report unless justifiable departures are determined to be appropriate (see below). The lower end of the interpreted range of the lek buffer distances is as follows:

- Linear features (roads) within 3.1 miles of leks
- Infrastructure related to energy development within 3.1 miles of leks
- Tall structures (e.g., communication or transmission towers and transmission lines) within 3 miles of leks
- Low structures (e.g., fences and rangeland structures) within 1.2 miles of leks.
- Surface disturbance (continuing human activities that alter or remove the natural vegetation) within 3.1 miles of leks.
- Noise and related disruptive activities, including those that do not result in habitat loss (e.g., motorized recreational events) at least 0.25 mile from leks.

Objective [Purpose]: To protect GRSG leks.

Exception: Justifiable departures to decrease or increase from these distances, based on local data, best available science, landscape features, and other existing protections (e.g., land use allocations and state regulations) may be appropriate for determining activity impacts. The USGS report recognized “that because of variation in populations, habitats, development patterns, social context, and other factors, for a particular disturbance type, there is no single distance that is an appropriate buffer for all populations and habitats across the sage-grouse range.” The USGS report also states that “various protection measures have been developed and implemented... [which have] the ability (alone or in concert with others) to protect important habitats, sustain populations, and support multiple-use demands for public lands.” All variation in lek buffer distances will require appropriate analysis and disclosure as part of activity authorization.

Modification: None

Waiver: None

Parcel #	Legal Land Description
	Mount Diablo Meridian, Nevada
NV-18-09-023	T. 22 N., R. 55 E., Sec. 15, Lots 3 and 4, W1/2SW1/4, and S1/2SE1/4; Sec. 16, S1/2NW1/4, and S1/2; Sec. 17, S1/2.
NV-18-09-024	T. 22 N., R. 55 E., Secs. 20 and 21; Sec. 22, Lots 1 thru 4, E1/2, W1/2NW1/4, and W1/2SW1/4.
NV-18-09-025	T. 22 N., R. 55 E., Secs. 27 thru 29.
NV-18-09-026	T. 22 N., R. 55 E., Sec. 30, SE1/4SE1/4; Sec. 31, E1/2; Secs. 32 and 33; Sec. 34, NE1/4, N1/2NW1/4, SW1/4NW1/4, SW1/4, and S1/2SE1/4.
NV-18-09-034	T. 24 N., R. 55 E., Sec. 1, Lots 1 thru 4, S1/2NE1/4, S1/2NW1/4, and S1/2; Sec. 2, Lots 1 thru 4, S1/2NE1/4, S1/2NW1/4, and S1/2; Sec. 3, Lots 1 thru 10, S1/2NE1/4, and SE1/4.
NV-18-09-035	T. 24 N., R. 55 E., Sec. 4, Lots 1 thru 3 and lots 8 thru 14 and lots 17 thru 22, SW1/4, and W1/2SE1/4.
NV-18-09-036	T. 24 N., R. 55 E., Sec. 9, Lots 1 thru 4, W1/2NE1/4, W1/2, and W1/2SE1/4;

Sec. 16, Lots 1 thru 4, W1/2NE1/4, NW1/4, N1/2SW1/4, SE1/4SW1/4, and W1/2SE1/4.

NV-18-09-037 T. 24 N., R. 55 E.,  
Sec. 21, Lots 1 thru 4, W1/2NE1/4, NE1/4NW1/4, and NW1/4SE1/4.

NV-18-09-038 T. 24 N., R. 55 E.,  
Secs. 25 and 26;  
Sec. 27, N1/2, N1/2SW1/4, SE1/4SW1/4, and SE1/4.

NV-18-09-040 T. 24 N., R. 55 E.,  
Sec. 34, NE1/4NE1/4.

NV-18-09-041 T. 24 N., R. 55 E.,  
Sec. 35, N1/2NE1/4, SE1/4NE1/4, and N1/2NW1/4;  
Sec. 36, N1/2NE1/4 and NW1/4.

NV-18-09-048 T. 25 N., R. 55 E.,  
Sec. 35, E1/2, NE1/4NW1/4, S1/2NW1/4, and S1/2;  
Sec. 36, W1/2.

NV-18-09-049 T. 25 N., R. 55 E.,  
Sec. 33, Lot 4;  
Sec. 34, Lots 5 thru 8, and SE1/4SE1/4.

NV-18-09-051 T. 26 N., R. 55 E.,  
Sec. 21, Lots 1 thru 4, W1/2NE1/4, E1/2NW1/4, NE1/4SW1/4, and W1/2SE1/4.

NV-18-09-052 T. 26 N., R. 55 E.,  
Sec. 28, Lot 1 and 2, and NW1/4NE1/4.

NV-18-09-081 T. 24 N., R. 56 E.,  
Sec. 4, SW1/4SW1/4;  
Sec. 5, Lots 2 thru 4, SW1/4NE1/4, S1/2NW1/4, and S1/2;  
Sec. 6, Lots 1 thru 7, S1/2NE1/4, SE1/4NW1/4, E1/2SW1/4, and SE1/4.

NV-18-09-082 T. 24 N., R. 56 E.,  
Sec. 7, Lots 1 thru 4, E1/2, W1/2NW1/4, and W1/2SW1/4;  
Sec. 8;  
Sec. 9, W1/2NW1/4, W1/2SW1/4, and SE1/4SW1/4.

NV-18-09-085 T. 24 N., R. 56 E.,  
Sec. 16, NW1/4 and W1/2SW1/4;  
Sec. 17;  
Sec. 18, Lots 1 thru 4, E1/2, E1/2NW1/4, and E1/2SW1/4.

NV-18-09-086 T. 24 N., R. 56 E.,  
Sec. 19, Lots 1 thru 4, E1/2, E1/2NW1/4, and E1/2SW1/4;  
Sec. 20, N1/2, SW1/4, N1/2SE1/4, and SW1/4SE1/4;  
Sec. 21, NW1/4NW1/4.

NV-18-09-088 T. 24 N., R. 56 E.,  
Sec. 25, SW1/4NW1/4, SW1/4, W1/2SE1/4, and SE1/4SE1/4;  
Sec. 26, S1/2NE1/4, S1/2NW1/4, and S1/2;  
Sec. 27, S1/2NE1/4, S1/2NW1/4, and S1/2.

NV-18-09-089 T. 24 N., R. 56 E.,  
Sec. 28, SE1/4NE1/4, NE1/4SW1/4, S1/2SW1/4, and SE1/4;  
Sec. 29, NW1/4NE1/4, NW1/4, and SE1/4SE1/4;  
Sec. 30, Lots 1 thru 4, NE1/4, E1/2NW1/4, E1/2SW1/4, N1/2SE1/4, and SW1/4SE1/4.

NV-18-09-090 T. 24 N., R. 56 E.,  
Sec. 31, Lot 1, and NE1/4NW1/4;  
Sec. 32, E1/2, SE1/4NW1/4, and SW1/4;  
Sec. 33.

NV-18-09-091 T. 24 N., R. 56 E.,  
Secs. 34 thru 36.

NV-18-09-095 T. 25 N., R. 56 E.,  
Sec. 31, Lots 1 thru 4, SW1/4NE1/4, SE1/4NW1/4, E1/2SW1/4, and SE1/4;  
Sec. 32, W1/2SW1/4 and SE1/4SW1/4.

NV-18-09-096

T. 26 N., R. 56 E.,

Sec. 19, Lots 1 thru 4, E1/2, E1/2NW1/4, and E1/2SW1/4;

Sec. 30, Lots 1 thru 4, E1/2, E1/2NW1/4, and E1/2SW1/4;

Sec. 31, Lots 1 and 2, N1/2NE1/4, SW1/4NE1/4, and E1/2NW1/4.

**Stipulation – Greater Sage Grouse (GRSG)  
Priority Habitat Management Area (PHMA) Disturbance Cap  
(#NV-L-16-H-CSU)**

Stipulation – Controlled Surface Use (CSU): New development/activity would not exceed the 3% disturbance cap protocol at either the biologically significant unit (BSU) or project scale in PHMA, unless a technical team (described under the exception) determines that new or site-specific information indicates the project could be modified to result in a net conservation gain at the BSU level.

Objective [Purpose]: To create a net conservation gain at the project and BSU level.

Exception: Nevada lands only – Any exceptions to the disturbance cap may be approved by the Authorized Officer only with the concurrence of the State Director. The Authorized Officer may not grant an exception unless the NDOW, the USFWS, and the BLM unanimously find that the proposed action satisfies the conditions stated in the stipulation. Initially, the technical team would make such finding; the team consists of a field biologist or other GRSG expert from each respective agency. In the event the initial finding were not unanimous, the finding may be elevated to the BLM State Director, USFWS State Ecological Services Director, and NDOW Director for final resolution. In the event their recommendation were not unanimous to grant the exception, the exception would not be granted.

Modification: None

Waiver: None

<b>Parcel #</b>	<b>Legal Land Description</b>
	Mount Diablo Meridian, Nevada
NV-18-09-004	T. 15 N., R. 53 E., Sec. 31, Lots 2 thru 4, and SE1/4SW1/4.
NV-18-09-006	T. 16 N., R. 54 E., Sec. 1, NE1/4.
NV-18-09-014	T. 18 N., R. 535 E., Sec. 13, SW1/4; Sec. 13, SE1/4.
NV-18-09-016	T. 18 N., R. 55 E., Sec. 5, Lot 4, SW1/4NW1/4; Sec. 6, Lots 1 thru 3 and lots 6 and 7, S 1/2NE1/4, S E1/4SW1/4, and E1/2SE1/4; Sec. 7, Lots 1 thru 4, SW1/4NE1/4, E1/2NW1/4, NE1/4SW1/4, and NW1/4SE1/4.
NV-18-09-017	T. 18 N., R. 55 E., Sec. 18, Lot 1; Sec. 19, SE1/4SE1/4.
NV-18-09-018	T. 18 N., R. 55 E., Sec. 30, Lot 4, NE1/4NE1/4, S1/2NE1/4, E1/2SW1/4, N1/2SE1/4, and SW1/4SE1/4; Sec. 31, Lots 1 thru 3, and W1/2NW1/4.
NV-18-09-034	T. 24 N., R. 55 E., Sec. 1, Lots 1 thru 4, S1/2NE1/4, S1/2NW1/4, and S1/2; Sec. 2, Lots 1 thru 4, S1/2NE1/4, S1/2NW1/4, and S1/2; Sec. 3, Lots 1 and 2, 7, 9 and 10, S1/2NE1/4, and SE1/4.
NV-18-09-035	T. 24 N., R. 55 E., Sec. 4, Lot 12 and lots 18 thru 22, and W1/2SE1/4.
NV-18-09-036	T. 24 N., R. 55 E., Sec. 9, Lots 1 thru 4, W1/2NE1/4, E1/2NW1/4, E1/2SW1/4, and W1/2SE1/4; Sec. 16, Lots 1 thru 4, W1/2NE1/4, NE1/4NW1/4, and W1/2SE1/4.
NV-18-09-037	T. 24 N., R. 55 E., Sec. 21, Lots 1 and 2.

NV-18-09-038 T. 24 N., R. 55 E.,  
Secs. 25 and 26  
Sec. 27, NE1/4, N1/2NW1/4, SE1/4NW1/4, N1/2SE1/4, and SE1/4SE1/4.

NV-18-09-041 T. 24 N., R. 55 E.,  
Sec. 35, N1/2NE1/4 and NE1/4NW1/4;  
Sec. 36, N1/2NE1/4 and N1/2NW1/4.

NV-18-09-048 T. 25 N., R. 55 E.,  
Sec. 35, S1/2NE1/4, S1/2NW1/4, and S1/2;  
Sec. 36, S1/2NW1/4 and SW1/4.

NV-18-09-049 T. 25 N., R. 55 E.,  
Sec. 34, SE1/4SE1/4.

NV-18-09-051 T. 26 N., R. 55 E.,  
Sec. 20, N1/2NE1/4, SE1/4NE1/4, and E1/2SE1/4;  
Sec. 21, Lots 1 thru 4, W1/2NE1/4, W1/2, and W1/2SE1/4.

NV-18-09-052 T. 26 N., R. 55 E.,  
Sec. 28, Lots 1 thru 4, W1/2NE1/4, N1/2NW1/4, SE1/4NW1/4, NE1/4SW1/4, and  
W1/2SE1/4.

NV-18-09-053 T. 26 N., R. 55 E.,  
Sec. 33, Lot 1.

NV-18-09-069 T. 20 N., R. 66 E.,  
Sec. 13, E1/2NE1/4 and NE1/4SE1/4.

NV-18-09-081 T. 24 N., R. 56 E.,  
Sec. 5, Lot 4; S1/2NW1/4, SW1/4, W1/2SE1/4, and SE1/4SE1/4;  
Sec. 6, Lots 1 thru 7, S1/2NE1/4, SE1/4NW1/4, E1/2SW1/4, and SE1/4.

NV-18-09-082 T. 24 N., R. 56 E.,  
Sec. 7, Lots 1 thru 4, E1/2, E1/2NW1/4, and E1/2SW1/4.  
Sec. 8;  
Sec. 9, W1/2SW1/4.

NV-18-09-085 T. 24 N., R. 56 E.,  
Sec. 17;  
Sec. 18, Lots 1 thru 4, E1/2, E1/2NW1/4, and E1/2SW1/4.

NV-18-09-086 T. 24 N., R. 56 E.,  
Sec. 19, Lots 1 thru 4, E1/2, E1/2NW1/4, and E1/2SW1/4;  
Sec. 20;  
Sec. 21, NW1/4NW1/4.

NV-18-09-088 T. 24 N., R. 56 E.,  
Sec. 25, S1/2NW1/4 and S1/2;  
Sec. 26, S1/2NE1/4 and W1/2,SE1/4;  
Sec. 27, E1/2, S1/2NW1/4, and SW1/4.

NV-18-09-089 T. 24 N., R. 56 E.,  
Sec. 28, S1/2NE1/4 and S1/2;  
Sec. 29, NW1/4NE1/4, NW1/4, NW1/4SW1/4, and S1/2SE1/4;  
Sec. 30, Lots 1 thru 4, E1/2, E1/2NW1/4, and E1/2SW1/4.

NV-18-09-090 T. 24 N., R. 56 E.,  
Sec. 31, Lot 1, and NE1/4NW1/4;  
Sec. 32, NE1/4 and E1/2NW1/4;  
Sec. 33.

NV-18-09-091 T. 24 N., R. 56 E.,  
Sec. 34;  
Sec. 35, N1/2, SW1/4, N1/2SE1/4, and SW1/4SE1/4;  
Sec. 36, NW1/4NW1/4.

NV-18-09-095 T. 25 N., R. 56 E.,  
Sec. 31, Lots 2 thru 4, E1/2SW1/4, W1/2SE1/4, and SE1/4SE1/4.

NV-18-09-096 T. 26 N., R. 56 E.,  
Sec. 19, Lots 1 thru 4, E1/2, E1/2NW1/4, and E1/2SW1/4;  
Sec. 30, Lots 1 thru 4, E1/2, E1/2NW1/4, and E1/2SW1/4;  
Sec. 31, Lots 1 thru 4, E1/2, E1/2NW1/4, and E1/2SW1/4.